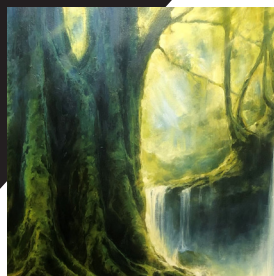


20
25

Exhibition Program



ZIGZAG
GALLERY



Image credit: Paper Treasures exhibition. Photograph by Danica Zuks

Acknowledgement of Country

The City of Kalamunda respectfully acknowledges the Traditional Owners, the Whadjuk Noongar People as the Custodians of this land. We also pay respect to all Aboriginal community Elders, past, present and future who have and continue to reside in the area and have been an integral part of the history of this region.

Our Sponsors



Framing Studios



EXPERIENCE
**PERTH
HILLS**
KALAMUNDA

Sponsor Callout

Would you like to support creativity and contemporary art in the Perth Hills?

The Zig Zag Gallery is seeking business sponsors to help us extend our programming and to present high-quality contemporary art. Get in touch with us at zzgallery@kalamunda.wa.gov.au



Image Credit: The Kalamunda Zine Fair.
Photograph by Emma Daisy.

January

Group Exhibition:
Darlings of the Scarp

February

Beth Harcourt:
A Better World

March

Community Exhibition:
Kalamunda Art Awards

April

Bill Jenkins & Hugu
Jenkins: At Life's Edge

May

Vic Bullo & Sarah Eve:
Real / Imagined

June

Lisa Nicole Fuller:
Penumbra

2025 Exhibition Palette

July

Lesley Murray:
Immersion

August

Tammi de Rooy:
New Light

August

Group Exhibition:
Dreamscapes

September

Community Exhibition:
Myths: Youth Art Awards

October

Nazerul Ben-Dzulkefli:
When Will You Listen
to Me?

November

Community Exhibition:
Odysseys 2025



Image Credit: 2024 Kalamunda Art Awards. Photograph by Ria (Curated St).

2026 Artist Callout

Would you like to exhibit at the Zig Zag Gallery in our 2026 program? Expressions of interest will open from Monday 24 March.

We invite applications from artists, art groups, and curators of any age who are at any stage of their career, whether established, mid-career and/or emerging.

Follow our socials and sign up to our mailing list to hear more.



Image Credit: 2024 Kalamunda Art Awards. Photograph by Ria (Curated St).

We are excited to present a new vision of contemporary arts in the Perth Hills. In 2025, the Zig Zag Gallery will continue supporting and uplifting our local talent.

We have the **Kalamunda Art Awards 2025**, an open submission art prize with artworks by established and emerging West Australian artists.

Myths: the Kalamunda Young Artist Awards, supporting young and emerging local artists in Kalamunda and beyond. And **Odysseys**, an exhibition featuring local artists over the age of 55.

In January, we are also launching a new exhibition featuring a selection of open studio artists from across the Perth Hills entitled **Darlings of the Scarp**.

In 2025, we are also presenting new and innovative art exhibitions from a diverse range of artists. Lesley Murray's new solo exhibition **Immersion**, which includes artworks about her incredible journey through culture as an Anawin woman.

Beth Harcourt's **A Better World**, a strange and delightful immersive sculptural exhibition.

Real / Imagined, an exhibition that celebrates Australian landscapes, both real and imagined, from local artists Vic Bullo and Sarah Eve. Lisa Nicole Fuller's **Penumbra**, a photography series that explores the hidden beauty of the botanical world, and the delicate border between light and shadow.

Tammi de Rooy's **New Light**, brilliantly detailed mixed-media oil paintings that celebrate the transformative power of sunrise in natural environments.

Nazerul Ben-Dzulkefli's **When Will You Listen To Me?** a new body of ceramic works resemble handbuilt medicinal jars, referencing a healing from psycho-social trauma.

At Life's Edge by Hugo Jenkins and Bill Jenkins, featuring pairings of poetry and photography. And a large group exhibition entitled **Dreamscapes: Exploring the Subconscious Through Art**, with work by Bec Abdy, Kathleen Bloomfield-Gibbs, Alida Cappelletta, Brad Coleman, Annabelle Gallon, Sophie Goodlich, John Herne, Annie Huang, Reagan Jackson, Savannah Matthews, Kristy Scaddan, Sarah Soulay, and Tara Wilson.

We are thrilled to host each of these in our 2025 program. Each exhibition opens with a launch party, and all are welcome to attend.

Please follow our socials and sign up to our newsletter to stay up to date with everything that is happening at the Zig Zag Gallery.



Group Exhibition

Darlings of the Scarp

Exhibition Dates

18 January – 9 February

Opening Night

6pm Friday 17 January

Vicky Alchin, Liz Berry, Ric Burkitt, Mikaela Castledine, Moira Court, Jackie Davies, John Eden, Sally Edmonds, Georgia Efford, Neil Elliott, Anne Farrell, Kate Faulds, Silvana Ferrario, Carolyn Francis, Helen Hayward, George Hayward, Karin Hotchkyn, Emma Lashmar, Penny Maddison, Ren Masetti, Jane Meleisea, Paul Moro, Lesley Murray, Corey Offszanka, Jessamy Offszanka, Chris Oxberry, Allison Snell, Brenda Stovell, Linda Stokes, Mel Taylor, Diana van der Harst, Mo Woltersdorf, and Danica Wichtermann.

Featuring artists from the Mundaring Open Studios, Armadale Open Studios, and Kalamunda Open Studios art trails, **Darlings of the Scarp** is a celebration of the many talented artists throughout the Perth Hills region.

Kalamunda Open Studios is an event which is held in Spring and Autumn in the City of Kalamunda. The Armadale Hills Open Studio Art Trail began in 2015 instigated by local Bedfordale artist Sue Doorey.

The Hills of the Mundaring area have long been a hub for creative people who find inspiration from the natural environment, with its spectacular forests, winding waterways and prolific wildlife. This exhibition unites a selection of artists from each of the open studio trails, demonstrating how the Perth Hills is brimming with creativity.

Danica Witchtermann, Red-tailed Black Cockatoo Platter, 2024.



Beth Harcourt

A Better World

Exhibition Dates

15 February – 9 March

Opening Night

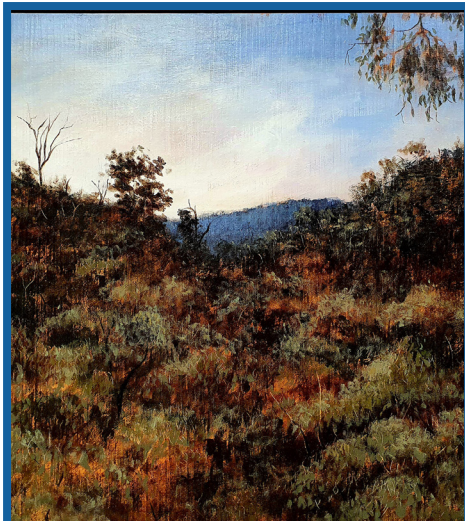
6pm Friday 14 February

Beth Harcourt, Augustus, 2024.

In **A Better Place** you are invited to step into an immersive exhibition that challenges your perception of nature and our role within it. The artworks transform recycled and found objects into creatures that could inhabit our everyday spaces - our homes and gardens.

As you walk through the curated environment, you'll discover inhabitants that require patience and close observation to reveal themselves. Each creature tells a story of re-birth and resilience, reflecting the potential for beauty in what is often discarded. By re-imagining waste as art, the artist inspires a dialogue about creative sustainability and the possibilities that arise when we see value in the overlooked.

The experience is enhanced with interactive QR codes that lead you to personality profiles for each artwork, allowing you to find your 'perfect match'. This prompts reflections on companionship, sustainability and the stories that bind us to our environment. Explore, engage and perhaps find a new perspective on what it means to create a better place - for ourselves and our world.



Community exhibition

Kalamunda Art Awards

Exhibition Dates

15 March – 7 April

Opening Night

6pm Friday 14 March

Johanna Zeelenberg, *The Last Glimpse*
(Kalamunda National Park - Hummerston Road), 2023.

The City of Kalamunda is proud to present the 2025 Art Awards. Originally run by the Lions Club of Kalamunda, the **Kalamunda Art Awards** is a supportive exhibition with art prizes that will showcase a diverse range of multi-disciplinary artworks from talented artists around Western Australia.

Held annually at the Zig Zag Gallery, this is an open exhibition inviting all artists to apply and will showcase artworks by established and emerging artists from Kalamunda and beyond.

The **Kalamunda Art Awards** aspires to connect, support, and uplift local artists and arts communities, and build bridges between our local community and the broader Perth arts community. Throughout its history, The Kalamunda Art Awards has showcased a high calibre of artworks from artists across a wide range of disciplines.

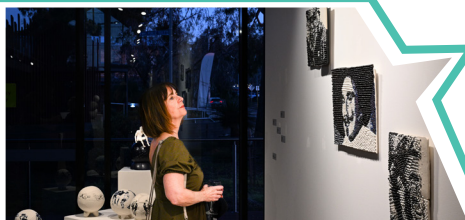


Image Credit: Iota: Codes in Parallel.
Photograph by Zyg Woltersdorf.

Kalamunda Art Awards

Callout 2025

Submit your artwork and form before
2pm Monday 17 February.

A total of \$4,300 in prize money to be won!
Find out more online at:
kalamunda.wa.gov.au/gallery

At Life's Edge

Exhibition Dates

12 April – 4 May

Opening Night

6pm Friday 11 April

Bill Jenkins and Hugo Jenkins, *You the Breeze*, 2024.



Bill Jenkins and Hugo Jenkins

At Life's Edge is a work of poetry and documentary photography from the personal perspectives of father and son, in their first artistic collaboration.

Revd Dr Bill Jenkins, poet and Hills resident of almost 40 years, pairs with his photographer son Hugo Jenkins to produce poetry paired with black and white documentary images of life in Western Australia.

They speak of being at the edge of life: togetherness, loss, inhumanity, joy, and love. Life, through the pen and camera of two Hills residents. The poetry compositions span Bill's life; however, the photography is freshly produced for this exhibition, all captured within nine months to the end of November 2024.



Sarah Eve & Vic Bullo

Real / Imagined

Exhibition Dates

6 May – 2 June

Opening Night

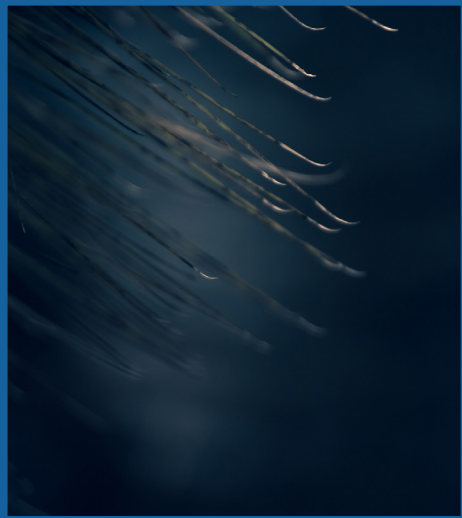
6pm Friday 9 May

Sarah Eve, Injidup Natural Spa (image credit Churchill Imaging) and Vic Bullo, Renewal (image credit Michael Bullo).

Real / Imagined is a celebration of Australian landscapes, both real and imagined. Local artists Vic Bullo and Sarah Eve, who are uncle and niece, have created unique interpretations of the land using acrylic and oil paints.

Bullo's imagined works take on a life of their own through his intuitive painting technique. His work evokes a sense of serenity and the beauty of nature's vastness, often reflecting a Romanticist viewpoint. Eve draws on inspiration from her travels in the natural landscape. She captures the feeling of being immersed in the land, honouring the place with vibrant colours and bringing a sense of whimsy and magic to her Abstract Realism style.

Landscapes hold deep significance for people, evoking personal memories, experiences, and feelings of home. Sometimes, these places embody wisdom and the stories of the land. This collection of works invites viewers to admire the beauty of nature and aims to evoke a sense of connection, awe, and peace within the landscape.



Lisa Nicole Fuller

Penumbra

Exhibition Dates

7 June – 29 June

Opening Night

6pm Friday 6 June

Lisa Nicole Fuller, *Spires*, 2024.

This series explores the hidden beauty of the botanical world, inspired by the penumbra—the delicate border between light and shadow. Through the interplay of light, form, and texture, the work aims to evoke wonder, inviting viewers to reflect on the connection between what is seen and unseen.

Each photograph balances contrasts - softness and sharpness, clarity and ambiguity, encouraging a deeper appreciation of nature's details. By embracing abstraction, the series highlights the complexities of botanical life and encourages reflection on our place within the natural world.

By delving into the penumbra, we can embark on a visual journey that celebrates the hidden beauty of botanical life, revealing its complexities and provoking contemplation of our place within it.



Lesley Murray

Immersion

Exhibition Dates

5 July – 27 July

Opening Night

6pm Friday 4 July

Lesley Murray, Family on Country. 2024.

Immersion is a new solo exhibition from Aboriginal artist Lesley Murray. Lesley is affected by the impact of a stroke and sees the world in an immersive way. She creates art based on her connection with her Anawin culture, Traditional Custodians of the New England area of NSW.

Although she lives on Whadjuk Noongar land, and has experienced the wonders of the Pilbara, Lesley Murray is strong in her identity and proud to be part of the oldest living culture in the world.

Lesley is affected by the impact of a stroke on Christmas Day 2020. She sees the world in an immersive way and takes her fellow artists on this journey. Her art is also an experimental journey in media/mediums to tell the stories from her childhood along with her inspirations from everyday life - being a mother and a creative woman in her own right.



Tammi de Rooy

New Light

Exhibition Dates

2 August – 24 August

Opening Night

6pm Friday 1 August

Tammi de Rooy, *Rise Above*, 2024.

New Light invites viewers into a serene world where the first rays of dawn filter through the natural landscape, illuminating its hidden beauty.

Capturing moments of quiet reflection and subtle revelation, the exhibition explores the delicate interplay of light and shadow in the early morning hours. From the towering grandeur of gum trees to the tiny wonders of native wildflowers, each piece reveals how the sunrise gently highlights nature's intricate details.

Tammi's detailed mixed-media oil paintings celebrate the transformative power of sunrise, offering fresh perspectives drawn from her experiences of sunrises in Perth and regional Western Australia.

The exhibition reflects the artist's deep connection to the natural landscape and invites viewers to pause, reflect, and embrace the peaceful beauty of the world as it awakens. *New Light* is a moment of tranquillity—a visual journey through nature's most sacred time: dawn.



Group Exhibition

Dreamscapes: Exploring the Subconscious Through Art

Exhibition Dates

30 August – 21 September

Opening Night

6pm Friday 29 August

Bec Abdy, Kathleen Bloomfield-Gibbs, Alida Cappelletta, Brad Coleman, Annabelle Gallon, Sophie Goodlich, John Herne, Annie Huang, Reagan Jackson, Savannah Matthews, Kristy Scaddan, Sarah Soulay, Tara Wilson

Dreamscapes: Exploring the Subconscious Through Art delves into how dreams and nightmares transcend individual experiences, shaping civilizations, inspiring creativity, and offering insights into the subconscious. Sleep becomes a canvas for these enigmatic narratives, connecting us through universal yet personal encounters.

This exhibition invites audiences to explore the profound landscapes of dreams and their emotional, cultural, and metaphysical dimensions. Artists are encouraged to use any medium to express their interpretations, highlighting how these phenomena influence personal histories and cultural identities.

By navigating the labyrinth of the subconscious, Dreamscapes fosters a dialogue that transcends language, culture, and experience, offering visitors a glimpse into the shared threads that bind us to the collective human story.

Brad Coleman, Molten Ice, 2024.



Myths: Young Artist Awards Kalamunda

Exhibition Dates

27 September – 12 October

Opening Night

6pm Friday 26 September

The City of Kalamunda is committed to fostering the talents and artistic pursuits of young people in the region. **Myths: The Young Artist Awards 2025** is an exhibition to showcase and celebrate emerging young artists through a professional exhibition, giving them a platform and voice.

In 2025, our theme is Myths, works inspired by folklore stories and legends. Art is transformative, able to inspire wonder and self-discovery, and can help us confront deep and wondrous stories in our communities. **Myths: The Young Artist Awards 2025** is a wonderful collection of work from young artists in Kalamunda that demonstrates this.



Young Artist Awards Callout 2025

Submissions open 9am Friday 2 June and close 5pm Friday 4 August.

A total of \$2,200 in prize money to be won!
Find out more online at:
kalamunda.wa.gov.au/gallery



Nazerul Ben-Dzulkefli

When will you listen to me?

Exhibition Dates

18 October – 9 November

Opening Night

6pm Friday 17 October

Nazerul Ben-Dzulkefli, Untapped Potential #1, 2024.

When Will You Listen to Me explores the artist's experience growing up as an ethnic minority, indigenous to the Malay Archipelago where Singapore, his home country is situated.

Nazerul's new body of ceramic works takes the pressures he experienced from his cultural, religious, and state-driven pressures as a starting point and translated them into handbuilt medicinal jars decorated with classical Malay Language and Mandarin literary aphorisms that encapsulates the artist's endeavour to heal psycho-social trauma.

Using Bahasa Melayu (Malay Language) rendered in the Jawi Script (modified Perso-Arabic script adopted to write Classical between the 12th to the late 20th century) and Mandarin aphorisms and proverbs surrounding the themes of secrets, healing, success and leaving home, Nazerul plans to convey his message using ceramic objects implying alchemical processes and vessels informed by medieval apothecary jars that contain ingredients for healing but are also storage containers wherein emotions are bottled and secrets are kept in fear of disapproval and rejection, only to ferment and bubble over in due time.



Community Art Exhibition

Odysseys 2025

Exhibition Dates

15 November – 7 December

Opening Night

6pm Friday 14 November

Ian Moss, Windmills of your Mind, 2024.

A group exhibition for artists over 55 living in the City of Kalamunda, **Odysseys** is a celebration of the creativity and talent that pays tribute to the long and storied history of the artistic community in the Perth Hills.

Kalamunda has been a gathering place for artisans and craft makers for many decades, and **Odysseys** displays the best talent that the local community has to offer. This group exhibition takes place during WA Senior's Week (9 – 16 November).

Artist Callout

Odysseys 2025

If you're a local artist aged 55+, we want you to apply for Odysseys.

Mark 13 August 2025 in your calendar when more information will be on our socials, mailing list, and website.



Image Credit: Home in a Leftover Universe
Photograph by Paul Hansen

**Step into
our gallery**

ZIG ZAG
GALLERY

Opening Hours

Monday – Friday: 9:00am – 4:00pm

Saturday & Sunday: 10:00am – 4:00pm

Public Holidays: 10:00am – 4:00pm

50 Railway Rd, Kalamunda

9257 9998 | zzgallery@kalamunda.wa.gov.au

kalamunda.wa.gov.au/gallery

**Follow
our gallery**



Subscribe to our newsletter
for the latest exhibitions
and arts events.



Zig Zag Gallery
Kalamunda