

# City of Kalamunda

## Waste & Recycling Guide 2025-2026



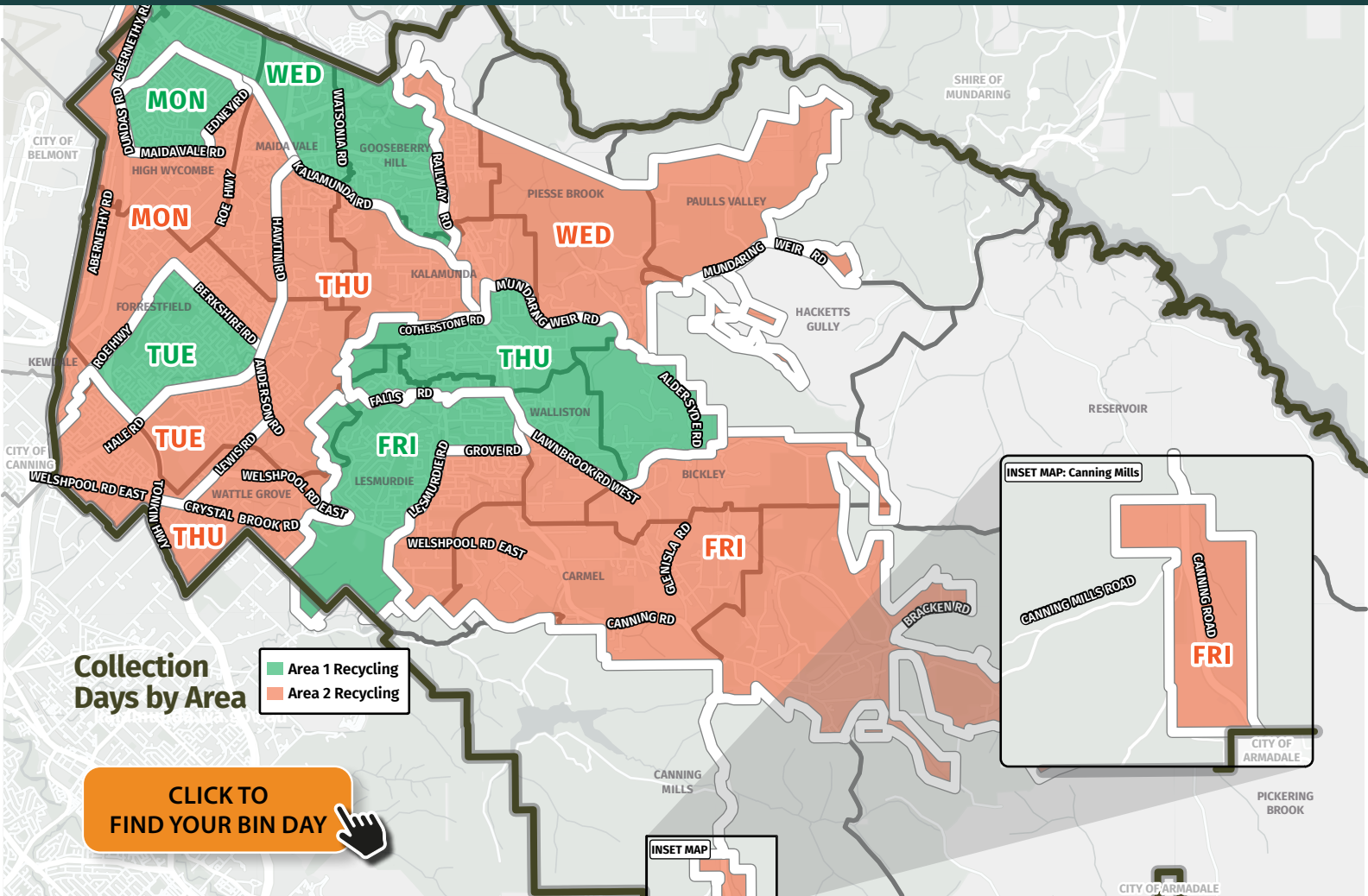
Collection enquiries:

**9449 3332**  
**Cleanaway**

Check map inside and  
tick your recycling area:

- ☐ **AREA 1**
- ☐ **AREA 2**

# 1 | Bin collection location



## 2 | Area 1 bin collection calendar (please turn over for Area 2 calendar)

JULY 2025						
Mon	Tue	Wed	Thu	Fri	Sat	Sun
	1	2	3	4	5	6
7	8	9	10	11	12	13
14	15	16	17	18	19	20
21	22	23	24	25	26	27
28	29	30	31			

AUGUST 2025						
Mon	Tue	Wed	Thu	Fri	Sat	Sun
				1	2	3
4	5	6	7	8	9	10
11	12	13	14	15	16	17
18	19	20	21	22	23	24
25	26	27	28	29	30	31

SEPTEMBER 2025						
Mon	Tue	Wed	Thu	Fri	Sat	Sun
1	2	3	4	5	6	7
8	9	10	11	12	13	14
15	16	17	18	19	20	21
22	23	24	25	26	27	28
29	30					

OCTOBER 2025						
Mon	Tue	Wed	Thu	Fri	Sat	Sun
		1	2	3	4	5
6	7	8	9	10	11	12
13	14	15	16	17	18	19
20	21	22	23	24	25	26
27	28	29	30	31		

NOVEMBER 2025						
Mon	Tue	Wed	Thu	Fri	Sat	Sun
					1	2
3	4	5	6	7	8	9
10	11	12	13	14	15	16
17	18	19	20	21	22	23
24	25	26	27	28	29	30

DECEMBER 2025						
Mon	Tue	Wed	Thu	Fri	Sat	Sun
1	2	3	4	5	6	7
8	9	10	11	12	13	14
15	16	17	18	19	20	21
22	23	24	25	26	27	28
29	30	31				

JANUARY 2026						
Mon	Tue	Wed	Thu	Fri	Sat	Sun
			1	2	3	4
5	6	7	8	9	10	11
12	13	14	15	16	17	18
19	20	21	22	23	24	25
26	27	28	29	30	31	

FEBRUARY 2026						
Mon	Tue	Wed	Thu	Fri	Sat	Sun
						1
2	3	4	5	6	7	8
9	10	11	12	13	14	15
16	17	18	19	20	21	22
23	24	25	26	27	28	

MARCH 2026						
Mon	Tue	Wed	Thu	Fri	Sat	Sun
					1	
2	3	4	5	6	7	8
9	10	11	12	13	14	15
16	17	18	19	20	21	22
23	24	25	26	27	28	29
30	31					

APRIL 2026						
Mon	Tue	Wed	Thu	Fri	Sat	Sun
		1	2	3	4	5
6	7	8	9	10	11	12
13	14	15	16	17	18	19
20	21	22	23	24	25	26
27	28	29	30			

MAY 2026						
Mon	Tue	Wed	Thu	Fri	Sat	Sun
				1	2	3
4	5	6	7	8	9	10
11	12	13	14	15	16	17
18	19	20	21	22	23	24
25	26	27	28	29	30	31

JUNE 2026						
Mon	Tue	Wed	Thu	Fri	Sat	Sun
1	2	3	4	5	6	7
8	9	10	11	12	13	14
15	16	17	18	19	20	21
22	23	24	25	26	27	28
29	30					

Place two bins out for collection each week



■ FOGO & GENERAL WASTE week

■ FOGO & RECYCLING week

■ Additional recycling & general waste service – Put all 3 bins out for collection

■ Public Holiday (no bin collection) – Bins will be serviced the next day

**NOTE: This calendar is only for Area 1**

### 3 | Area 2 bin collection calendar

#### JULY 2025

Mon	Tue	Wed	Thu	Fri	Sat	Sun
	1	2	3	4	5	6
7	8	9	10	11	12	13
14	15	16	17	18	19	20
21	22	23	24	25	26	27
28	29	30	31			

#### AUGUST 2025

Mon	Tue	Wed	Thu	Fri	Sat	Sun
				1	2	3
4	5	6	7	8	9	10
11	12	13	14	15	16	17
18	19	20	21	22	23	24
25	26	27	28	29	30	31

#### SEPTEMBER 2025

Mon	Tue	Wed	Thu	Fri	Sat	Sun
1	2	3	4	5	6	7
8	9	10	11	12	13	14
15	16	17	18	19	20	21
22	23	24	25	26	27	28
29	30					

#### OCTOBER 2025

Mon	Tue	Wed	Thu	Fri	Sat	Sun
		1	2	3	4	5
6	7	8	9	10	11	12
13	14	15	16	17	18	19
20	21	22	23	24	25	26
27	28	29	30	31		

#### NOVEMBER 2025

Mon	Tue	Wed	Thu	Fri	Sat	Sun
					1	2
3	4	5	6	7	8	9
10	11	12	13	14	15	16
17	18	19	20	21	22	23
24	25	26	27	28	29	30

#### DECEMBER 2025

Mon	Tue	Wed	Thu	Fri	Sat	Sun
1	2	3	4	5	6	7
8	9	10	11	12	13	14
15	16	17	18	19	20	21
22	23	24	25	26	27	28
29	30	31				

#### JANUARY 2026

Mon	Tue	Wed	Thu	Fri	Sat	Sun
			1	2	3	4
5	6	7	8	9	10	11
12	13	14	15	16	17	18
19	20	21	22	23	24	25
26	27	28	29	30	31	

#### FEBRUARY 2026

Mon	Tue	Wed	Thu	Fri	Sat	Sun
						1
2	3	4	5	6	7	8
9	10	11	12	13	14	15
16	17	18	19	20	21	22
23	24	25	26	27	28	

#### MARCH 2026

Mon	Tue	Wed	Thu	Fri	Sat	Sun
						1
2	3	4	5	6	7	8
9	10	11	12	13	14	15
16	17	18	19	20	21	22
23	24	25	26	27	28	29
30	31					

#### APRIL 2026

Mon	Tue	Wed	Thu	Fri	Sat	Sun
		1	2	3	4	5
6	7	8	9	10	11	12
13	14	15	16	17	18	19
20	21	22	23	24	25	26
27	28	29	30			

#### MAY 2026

Mon	Tue	Wed	Thu	Fri	Sat	Sun
				1	2	3
4	5	6	7	8	9	10
11	12	13	14	15	16	17
18	19	20	21	22	23	24
25	26	27	28	29	30	31

#### JUNE 2026

Mon	Tue	Wed	Thu	Fri	Sat	Sun
1	2	3	4	5	6	7
8	9	10	11	12	13	14
15	16	17	18	19	20	21
22	23	24	25	26	27	28
29	30					

Place two bins out for collection each week



**FOGO & GENERAL WASTE week**

**FOGO & RECYCLING week**

**Additional recycling & general waste service –**  
Put all 3 bins out for collection

**Public Holiday (no bin collection) –**  
Bins will be serviced the next day

**NOTE: This calendar is only for Area 2**



## Recycling

The **YELLOW LID RECYCLING BIN** is for recycling cardboard, paper, glass, plastic bottles and containers, aluminium and steel cans. Your recycling bin will be collected **fortnightly**.

### DO NOT BAG YOUR RECYCLABLES!

Rinse your empty containers and place them loosely in the bin!

#### Allowed

- ✓ paper (**not shredded**)
- ✓ cardboard (flattened)
- ✓ plastic containers and bottles (lids removed and put in recycling bin or drop off)
- ✓ glass bottles and jars (including broken glass)
- ✓ aluminium and steel cans (including lids, food cans and pet food tins)
- ✓ aluminium foil (clean and scrunched into tennis ball size)
- ✓ magazines, newspaper, paper envelopes, paper bags
- ✓ egg cartons

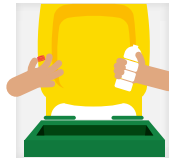
#### Not allowed

- ✗ aerosol cans or gas bottles
- ✗ meat trays
- ✗ soft plastics
- ✗ nappies
- ✗ polystyrene or foam
- ✗ long life cartons e.g. long life milk, soy/plant milks and stock cartons
- ✗ food and garden waste
- ✗ clothing or textiles
- ✗ bound or spiral books
- ✗ electronic waste or batteries
- ✗ spray or pump lids
- ✗ ropes, cables or hoses

### Three easy recycling rules

#### 1. LIDS OFF\*

Small plastics lids contaminate recycling.



#### 2. RINSE

Remove contamination.



#### 3. KEEP IT LOOSE

Loose items get recycled, items in bags do not.



\* Lids that are smaller than an adults palm go in general waste or to the Walliston Transfer Station or Containers for Change.

### Which bin do I put it in?

For a comprehensive **A-Z Sorting Guide** for your three bin FOGO system, including tricky items that cannot be placed in your kerbside bins, visit the **Recycle Right** website or download the Recycle Right app.



If you're unsure what should go in your yellow lid recycling bin, find the answer at the **Recycle Right** website

CLICK TO VISIT RECYCLE RIGHT





## General Waste

The **RED LID GENERAL WASTE BIN** is for your remaining household rubbish that cannot be composted or recycled. Your general waste bin will be collected **fortnightly**.

### Allowed

- ✓ nappies and hygiene products
- ✓ meat trays
- ✓ polystyrene and foam packaging
- ✓ long life cartons (foil lined) e.g. long life milk, soy/plant milks and soup stock cartons
- ✓ unusable clothing and rags that cannot be donated
- ✓ plastic bags, bubble wrap and other soft plastics
- ✓ broken toys and small items (**batteries removed**)
- ✓ rapid antigen tests (RAT)
- ✓ face masks
- ✓ gloves

### Not allowed

- ✗ food and garden organics
- ✗ batteries, electronics, cigarette lighters and e-cigarettes, paints or other hazardous waste
- ✗ clean recyclables

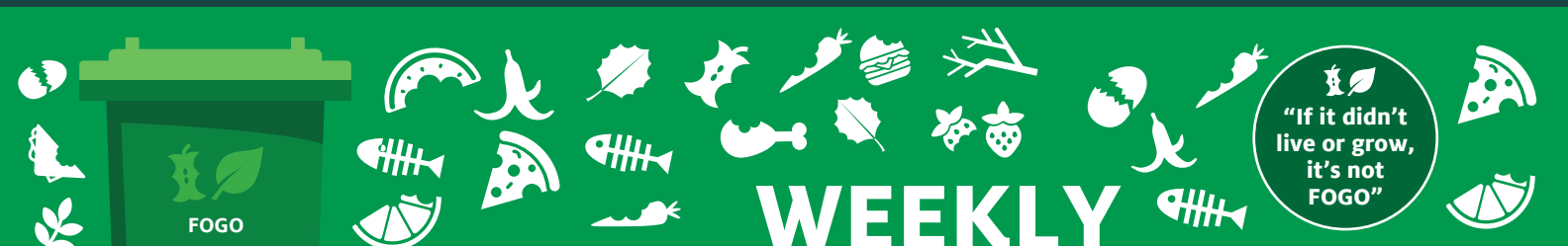
**NOTE:** Polystyrene and aerosol cans can be dropped off at the Walliston Transfer Station where they will be recycled.

**See details on the Hazardous Waste and drop off centres on page 9**

**Do better than the bin. Drop off old batteries in-store.**

**FIND YOUR NEAREST DROP OFF LOCATION**





## Food Organics & Garden Organics (FOGO)

The **LIME-GREEN LID FOGO BIN** waste will be made into high quality compost, soil conditioner, and mulch, so there must be NO contamination. Please use only compostable liners in your kitchen caddy, never plastic bags. Your FOGO bin will be collected **weekly**.

### Allowed

#### Food waste including:

- ✓ fruit and vegetables
- ✓ meat and bones (raw or cooked)
- ✓ seafood (including shells)
- ✓ tea leaves and coffee grounds
- ✓ bread and dairy products
- ✓ food leftovers and scraps
- ✓ egg shells
- ✓ out of date food (unpackaged)

#### Garden organics including:

- ✓ lawn clippings
- ✓ leaves
- ✓ flowers and weeds
- ✓ small branches
- ✓ certified compostable caddy liners
- ✓ honkey nuts

### Not allowed

- ✗ anything in non-compostable bags
- ✗ biodegradable packaging/plant based plastic packaging
- ✗ disposable coffee cups
- ✗ ceramics and glass
- ✗ coffee pods
- ✗ garden prunings greater than 30cm in width and length
- ✗ general waste
- ✗ hoses and garden tools
- ✗ nappies and hygiene products (including compostable)
- ✗ plastic bags and packaging
- ✗ plant pots (plastic and ceramic)
- ✗ rocks and pebbles
- ✗ turf, soil and sand
- ✗ clothes and textiles
- ✗ timber (treated and untreated)
- ✗ aerosol cans and gas bottles
- ✗ batteries and electronic waste
- ✗ shiny paper, waxed paper and cardboard labels, tape etc.



**Only use certified compostable liners:** Certified compostable bags always have the Compostable AS4736 logo.

If you wish to obtain more caddy liners, please contact the City of Kalamunda on 9257 9999.

### Kitchen caddy instructions



#### Caddy

Line your caddy with a compostable liner. Or go nude with no liner at all.

(your caddy is dishwasher safe)



#### Food scraps

Place all your food scraps in the caddy and other compostable material like coffee grounds.



#### FOGO bin

Once your caddy is full, tie up the liner and place it in your green lid FOGO bin.

**WHERE TO FIND EXTRA CADDY LINERS**



## 7 | Bin placement – *Placing your bin correctly*

### Please place two bins out for collection each week:

See your collection dates on pages 2 and 3.

To ensure our waste trucks are able to collect your bins, follow these guidelines.



Keep the weight of the bin under 70kg.



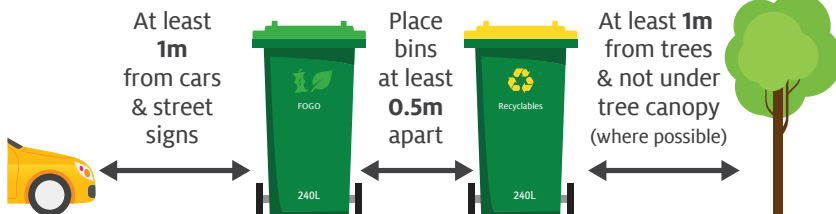
Place bin out by 6am of your collection day.



Ensure your bin lid can close and do not overfill.



Ensure no vehicles are parked in front of the bins.



## Mattress and whitegoods collection service

### The City of Kalamunda offers a mattress and whitegoods collection service for a fee.

For more information or to organise a collection and make payment, please contact the City on **9257 9999**.

Residents will need to place items neatly on their verge. **Please note: we are unable to collect from inside private property.**



**Washing machines**



**Microwaves or ovens**



**Fridges**



**Mattresses**

Payment can be made over the phone or in person at the  
**City of Kalamunda Administration Building, 2 Railway Road, Kalamunda.**

**VIEW CURRENT FEES**



## The skip bin service is an on-demand service.

Residents can select from either a general waste skip bin (blue) or green waste skip bin (green). Households are entitled to any combination of three skip bins per financial year (excludes commercial and industrial premises). Both the general and green waste skip bins are 3 cubic metres (bin dimensions 1.95m long, 1.65m deep and 1.25m high).

Households that meet the following criteria are entitled to additional green waste bin(s) only, to assist with bush fire management.

One additional green waste bin is available for properties 2000m<sup>2</sup> – 5000m<sup>2</sup>.

Two additional green waste bins are available for properties over 5000m<sup>2</sup>.

Phone Cleanaway on 9449 3332 or book online.

### Ordering a Skip Bin

The City has an online booking system allowing residents to register details, book days in advance and view allocations.

Please note: Book early - there is a high demand for skip bins! Allocations do not carry over to the next financial year.

**BOOK A SKIP BIN ONLINE**



Green Waste collected from the **Green Skip Bins** is mulched & re-used, reducing the amount of waste sent to landfill.  
**Please keep green waste free of contamination.**

### Please remember:

- Skip bins cannot be placed within private property.
- Skip bins must remain where they are placed.
- Keep the area clear so the Cleanaway driver can safely remove the skip bin.
- Skip bins will be emptied by 6pm at the latest.
- If a skip bin needs to be emptied by the City of Kalamunda due to misuse, the resident will be responsible for all costs incurred.
- Day of use is the day following delivery, book gardeners or help accordingly.  
For more information on delivery, see [kalamunda.wa.gov.au/residents/waste-recycling/skip-bins](http://kalamunda.wa.gov.au/residents/waste-recycling/skip-bins).
- Allocations have to be ordered before 15 June and used by 30 June i.e. delivered on site by 30 June.  
See our website for the full explanation.

### Green skip bins (Green waste only)



- ✓ green waste
- ✓ tree prunings
- ✓ grass clippings
- ✗ plastic
- ✗ sand
- ✗ sleepers
- ✗ rubbish
- ✗ lawn sod
- ✗ recyclables
- ✗ furniture
- ✗ treated pine /posts
- ✗ demolition (building and timber)
- ✗ no food waste

### Blue skip bins (General waste)



- ✓ bulky household items
- ✓ furniture (dismantled)
- ✓ timber (incl. treated pine)
- ✓ toys (remove batteries)
- ✓ assorted junk
- ✗ batteries
- ✗ gas bottles
- ✗ glass topped tables
- ✗ green waste
- ✗ no food waste

### Not accepted in either skip bin

- ✗ no hazardous waste (paints or chemicals)
- ✗ no car parts (including tyres)
- ✗ no builders waste (sand and bricks etc.)
- ✗ no whitegoods
- ✗ no liquid waste at all
- ✗ no mattresses
- ✗ no e-waste
- ✗ no asbestos

*\*An additional fee will be charged for contamination. See 'Removal of excess or non conforming waste from skip bin' within our fees and charges.*

## 9 | Household hazardous waste (HHW) disposal

There are a number of HHW items which **must not** be placed in your bins. These HHW items can be taken to any permanent HHW facility such as those listed in the WALGA HHW program brochure. Please refer to the table below for the HHW item(s) that can be disposed of.

### Accepted Household Hazardous Waste (HHW) Items

(20kg / 20L per material)

#### Household Hazardous Waste Program Facilities



Smoke detectors



Household batteries



Fluorescent lights



Pool & garden chemicals



Fire extinguishers



Flammable



Gas cylinder



Poisons



Paint or empty paint tins



Flares

CLICK FOR A FULL LIST OF LOCATIONS



VIEW THE A-Z RECYCLING GUIDE



**Paintback is a waste paint and packaging collection scheme for architectural and decorative paint.**

Paintback allows free disposal of paint products of up to 100L or 100kgs for both households and trades.

Red Hill Waste Management Facility operate a conveniently located collection point, 1094 Toodyay Road, Red Hill.

**Note:** The Walliston Transfer Station does not accept paint.

#### Walliston Transfer Station



Motor oil  
(max. 20 litres)



Household batteries



E-waste (data will be deleted)



Flourescent



Car batteries



For all asbestos disposal,  
please contact Red Hill  
Waste Management  
Facility on  
9574 6285

#### Recycling Hub

VIEW ALL DROP OFF AND COLLECTION POINTS



## Walliston Transfer Station (Thursday to Sunday)

155 Lawnbrook Road, Walliston  
Telephone: **9257 9803**  
[kalamunda.wa.gov.au/waste](http://kalamunda.wa.gov.au/waste)

### Operating Hours

Thursday: 8:00am – 3:30pm  
Friday: 8:00am – 2:30pm  
Saturday & Sunday: 8:00am – 3:30pm

Follow  
the flags  
to the  
public  
entrance

Closed ALL Public Holidays. The Transfer Station is open on the days when a Total Fire Ban is declared, but it must close when a Harvest and Vehicle Movement Ban is declared.

The City of Kalamunda has established an SMS System to help notify residents of the latest bushfire danger ratings and total fire ban information.

**REGISTER NOW**



## No Entry Pass, NO ENTRY

The Entry Pass (EP) allows four free entries per year for the following wastes/combination of wastes:

- ✓ Building rubble
- ✓ General waste
- ✓ Glass (excluding bottles)
- ✓ Mattresses
- ✓ Timber
- ✓ White goods

The EP allows unlimited access for the following waste types:

- ✓ Bottle top lids (plastic)
- ✓ Cardboard
- ✓ Coffee pods
- ✓ Dry cell and lead acid batteries
- ✓ Electronic waste
- ✓ Fluorescent tubes
- ✓ All metal types (30cm x 150cm max)
- ✓ Glass bottles
- ✓ Globes
- ✓ Green waste
- ✓ Motor oil (max 20L per entry)
- ✓ Polystyrene


Ratepayers/Residents do not pay fees for non-commercial use of the Walliston Transfer Station. To gain free access, you will need to bring your **Entry Pass (EP)** along with Proof of Residency (i.e. Driver's Licence). Tenants are advised to contact their real estate agents or property owners to obtain their EP. **Please note your driver's licence must match your address.**

### The following items are NOT accepted:

- |                        |                                    |
|------------------------|------------------------------------|
| ✗ Asbestos or hardflex | ✗ X-Rays                           |
| ✗ Car bodies           | ✗ Liquids                          |
| ✗ Chemicals            | ✗ Medical waste                    |
| ✗ Fire extinguishers   | ✗ Paints                           |
| ✗ Flares / explosives  | ✗ Rocks eg coffee/granite/ asphalt |
| ✗ Food waste           | ✗ Sand or soil                     |
| ✗ Gas cylinders        | ✗ Smoke detectors                  |
| ✗ Hazardous waste      | ✗ Tree stumps (greater than 30cm)  |
| ✗ Putrescible waste    |                                    |

\*Fees & charges available at [kalamunda.wa.gov.au/residents/waste-recycling/tips-transferstations](http://kalamunda.wa.gov.au/residents/waste-recycling/tips-transferstations). A fee is charged for replacement Entry Passes.

**Note: EFTPOS only. No cash facilities available at Walliston Transfer Station.**

  
**"If you can't lift it, you can't unload it"**



**For residents wanting to dispose of general waste, green waste or recycling at the Walliston Transfer Station with branded/commercial vehicles and/or trucks up to 3.5t GVM, a permit is required.** Please visit the City's website for a permit application form. It will take 7-10 business days for the permit to be processed. A vehicle permit is required for oversized trailers (maximum 12ft by 6ft ) to dispose of green waste only. No horse floats or car towing trailers permitted. No trucks over 3.5t. No trailers over 12ft.



You can now grab a bargain and donate your secondhand household items at Kalamunda's new reuse shop.

155 Lawnbrook Road, Walliston (at the front of the Walliston Transfer Station)

#### Operating Hours

Thursday: 8:30am – 3:00pm

Friday: 8:30am – 2:00pm

Saturday & Sunday: 8:30am – 3:00pm

Closed: ALL Public Holidays

Managed by Workpower, a WA disability service provider, your donations and purchases will support people with disability in employment and in the community.

**Parking bays for shopping and donations to Second Chance are located between the black Exit and Entry Gates at the front of Walliston Transfer Station.**



#### **YOU CAN DONATE YOUR ITEMS AND RECYCLE FOR FREE!**

We can accept a wide range of materials for recycling at absolutely no cost to you. We accept:

- Good quality furniture and household goods
- Household electrical appliances
- Landscape and renovator items
- Glass and plastics
- Glass and plastics

We also accept eligible Containers for Change containers, with all donations going to support people with a disability through Workpower.



The City of Kalamunda is a proud partner of **Switch Your Thinking**, a regional sustainability program. Through this initiative the City of Kalamunda seeks to help residents, community members and local businesses make sustainability changes.

The City in partnership with **Switch Your Thinking** offers the Rewards for Residents and Rewards for Business Programs which support you to live and work more sustainably.

**MORE INFORMATION**



*The City of Kalamunda acknowledges the Whadjuk Noongar people as the traditional owners of the Kalamunda and foothills area and pays its respects to their Elders past, present and future.*

*Workpower*

