

# CONNECT

Summer 2016/2017 Edition 1

## In this edition

- Forrestfield North
- Bushfire Safety
- Bibbulmun Terminus
- Wattle Grove Upgrades
- Holiday Boredom Busters
- What's On





# Message from the Shire President

Welcome to the first edition of Kalamunda Connect. There was a time when people only expected their local government to maintain roads, parks and pick up the rubbish. Those days are long gone. Whilst those services are very much still core activities, a modern local government provides a much wider range of services. Our community has also come to expect high customer service, extensive consultation and transparency from its local government.

We strive to do these things whilst keeping our rates as low as possible, planning for future growth, and adapting to ever-changing social and technological environments, and we aim to do so, as openly as possible.

There is no doubt Kalamunda Shire is changing. We have experienced incredible growth over the past few years and stand on the cusp of even greater growth, thanks to the opening up of Forrestfield North through the new train line. Outside of our suburban growth we have seen incredible development to the east and a blossoming of the major ecotourism area. At the same time we are dealing with many legacy issues such as ageing infrastructure, contaminated sites and the impact of living in such close proximity to national forest with the bushfire risks that brings.

To respond to these challenges, the Shire has been looking inward and finding new ways to deliver services, to communicate with residents, to grow our economy, and to ensure our unique lifestyle is maintained. This thinking has seen some considerable internal restructuring of the Shire, the recruitment of many new enthusiastic staff members and a shift to a more professional approach to doing business. We're learning to be proactive, responsive and flexible.

I am certainly proud of the many changes that have occurred over the past 12 months, but I always reflect on the need for balance and the need to remember the most fundamental truth, that this is our home, this is where we live. It is a privilege to have an opportunity to be part of an organisation whose primary goal is to make our home a great place to live. We should not seek change merely for the sake of it, but for the greater good.

This newsletter is one of several initiatives I hope will enable better connections and improved communication across the Shire. We have recently concluded a major public consultation to review our strategic direction over the coming years. From that, we've heard loud and clear a desire from the community for more openness,



more economic development, and more growth opportunities. But just as loudly, that we need to do so whilst preserving what makes us unique. Our environment, our heritage, our lifestyle and our people are all highly regarded and must always be at the forefront of our minds as we continue to build our home for the future.

Enjoy reading the newsletter, and if you can, take the time to enjoy some of the many and varied activities we offer and get involved. After all, it is your community and we all have a part to play in making this a fantastic place to be.

Andrew Waddell  
**Shire President**

## Shire fast facts...

Population estimates and age structures of the Shire of Kalamunda provide key insights into the level of demand for services and facilities. It is also an indicator of the Shire's residential role and function and how it is likely to change into the future.

The official population of the Shire of Kalamunda as of 30 June 2015 was 60,830. This is an increase of 9,778 people living here since in

2005, when the population was 51,052. Between 2011 and 2021, the age structure forecasts for the Shire of Kalamunda indicate a 16.9% increase in population under working age, a 52.7% increase in population of retirement age, and a 7.0% increase in population of working age. In May 2016 population forecasts were predicting by 2036 the total population would reach 77,130 people. #gettingreadyforgrowth

## Connect with us



@Shire\_Kalamunda

# Stay safe. Be bushfire ready

The bushfire season is on our doorstep and it's vital for residents living in the Shire to be bushfire ready.

Even if you don't have a large property, it is still vital to understand the bushfire risk in your area to ensure your home is protected. This is not just about ensuring your property is prepared but also about developing a Survival Plan for your family and being clear about what to do if a bushfire starts – it could save your life.

Earlier this year the Shire sent a new Fire & Burning Information 2016/2017 guide to all residents to help with preparations. Please contact the Shire if you didn't get one or you require further information.

Owners and occupiers of properties within the Shire are also required to comply with the Shire's Firebreaks and Fuel Load Notice to reduce the risk to their home and family. All bushfire safety requirements must be maintained until 31 March 2017.

**ARE YOU  
BUSHFIRE  
READY?**

[areyouready.wa.gov.au](http://areyouready.wa.gov.au)

For further information visit [www.kalamunda.wa.gov.au/fire](http://www.kalamunda.wa.gov.au/fire) and download a copy of the *Prepare. Act. Survive.* guide. You can also contact our Bushfire Community Safety Officer to arrange a free onsite meeting. Phone 9257 9999.

## Creating an asbestos aware community

Many houses and structures built before the mid-1980s were made from asbestos products. It was commonly used because it was considered a versatile product, able to withstand heat, erosion and decay, and has fire and water resistant properties.

Asbestos containing material is commonly found across Australia. The most common form being asbestos cement panels, used in old fibro houses and fencing.

The Shire of Kalamunda has been working for some time towards addressing a range of issues related to a legacy of asbestos dumping at landfill sites, through to illegal dumping.

This includes focusing on the removal of asbestos containing material if found on the surface, covering known landfill sites with clean soil, mulching these areas and replanting native vegetation in bushlands.

In recent months the Shire has also identified several new sites where asbestos related contaminants have or may likely be found. This includes the actioning of preliminary site investigations under the advice of the Department of Environment and Regulation (DER) and the

Department of Health (DoH).

The Ledger Road Reserve site investigation report has now been sent to the DER and DoH for review. The Alan Anderson Park site investigation report is currently with the DER for comment, and while the Kalamunda History Village has re-opened to the public following a short closure after asbestos was discovered, our beloved locomotive remains encapsulated until next steps for its remediation can be decided.

CEO Rhonda Hardy said the Shire is committed to creating an asbestos aware community to help residents better understand and deal with it.

"It's important to acknowledge asbestos related findings are going to continue and dealing with it is a real and whole community issue, which requires unified responsiveness.

"With it still so commonly found in our homes, landfills sites and public spaces, we need to accept that this will happen and work together to better identify and manage areas where it is found. We are committed to managing asbestos and the associated hazards as best we can with the community, for the safety of the community."



Visit [asbestosawareness.com.au](http://asbestosawareness.com.au) to search the 'Asbestos Product Database. If you do come across asbestos in your home, school or community space please contact Shire Environmental Health Services on 9257 9813.







## Jacaranda Springs upgrade

An exciting new upgrade is poised for Jacaranda Springs Park in High Wycombe in the New Year. Residents have provided valuable input to help make the park community friendly. At a free sausage sizzle in mid-November, residents were able to view the proposed Concept Plan and helped to prioritise the wish-list for the upgrade. Some of the ideas put forward include:

- half-court basketball court to be re-located away from the open space
- playground combo unit with shade cover
- picnic shelter and bench seating
- outdoor fitness equipment
- combination swing unit
- nature play area
- climbing net
- drinking fountain
- solar/security lighting along sections of the pathway
- bins

The Shire has started preparing documents for quotes to design and install the play and picnic equipment and preparation for other items is also underway.

Works are expected to begin in March 2017.



## Have you got building approval?



Are you thinking of building a shed, adding an outdoor spa, taking down a patio, or converting any part of your home? Make sure you get approval first.

Most structures residents wish to build will require a building permit application or planning approval from the Shire. Having approval means there is regulation in the building standards throughout the Shire.

Not having approval or not building in accordance with approved plans, can result in hold ups with settling a property sale, prosecution or in extreme cases the removal of an

already built structure. Similarly, planning approvals are also required for all demolition jobs and for any commercial building fit-outs, re-roofing and occupancy. Business owners must apply for Occupancy Permits before a building can be occupied and used for the desired purpose.

Illegal fit-outs, improvements and occupancy can incur significant penalties.

If in any doubt, before you start building, demolishing or occupying anything please phone the Shire's Approval Services Team on 9257 9999 for advice.

## Preserving Fleming Reserve

Fleming Reserve in High Wycombe is a big hit with the local community and home to some beautiful Jarrah and Banksia woodland vegetation, but it also contains some unwanted environmental infestation known as Phytophthora Dieback. Dieback can cause the death of some 40% of native plants in WA and is spread by the transport of infected soil on shoes, wheels or machinery.

The Shire's Environment Team has been managing the impact of Phytophthora Dieback at Fleming Reserve for more than five years,

including maintaining paths through the reserve to guide foot traffic, injecting Phosphite into susceptible trees and undertaking foliar application of Phosphite on understorey species.



See more information and watch our video at [www.kalamunda.wa.gov.au](http://www.kalamunda.wa.gov.au) For more information on the lifecycle and impacts of this disease visit the Dieback Working Group's website [www.dwg.org.au](http://www.dwg.org.au)

# Forrestfield station and activity centre steaming ahead



Over the past two years forward works for the Forrestfield Station have been undertaken by the Perth Transport Authority. These works have included clearing the area and relocating major services to make way for the future station and dive structure.

In early November the Forrestfield Airport Link project reached a major milestone when the Western Australian Planning Commission (WAPC) approved the Development Application for early works at the Forrestfield site.

In early December Council was briefed and a community information session was held to discuss activities and impacts of ongoing works on the surrounding community and to present initial design concepts for the station.

Through December demolition of buildings are being staged using a controlled collapse method. Demolition works will be completed by the end of January. Dust management will be in place throughout the demolition process.

Meanwhile, following the WAPC's approval of the Shire's Forrestfield North District Structure Plan, we are continuing to assess priority species vegetation and threatened communities in the area, and are reviewing tender proposals for Local Structure Plans which will be the guiding documents in creating a vibrant, high-density activity centre in support of the State Government's extension to the rail network into the region.

Structure Plans will provide the potential for new retail, commercial

and residential mixed-use developments in the region, as well as medium and high density developments to give significant housing options.

The Shire expects to advertise the Draft Local Structure Plans in late 2017 for public comment.

To subscribe to updates on the Forrestfield Airport Link project visit [forrestfieldairportlink.wa.gov.au](http://forrestfieldairportlink.wa.gov.au) or you can call the InfoLine on 1800 814 512.



*Member for Forrestfield Nathan Morton, Shire of Kalamunda CEO Rhonda Hardy, Premier Colin Barnett, Member for Belmont Glenys Godfrey and Member for East Metro Alyssa Hayden recently attended the turning of the sod ceremony for the Forrestfield Airport link.*





## Summer boredom buster



The Kalamunda Water Park is open and ready for summer! The Water Park is managed by YMCA in partnership with the Shire. The Park is better than ever after significant maintenance and enhancement were done during the off-season, including sealing and painting the main pool and the children's pool shells, new line marking, fencing upgrades and improvements to the slide entry and launch box.

CEO Rhonda Hardy said, "The Shire and YMCA are always proud to present this popular facility as a must-visit school holiday boredom buster this summer and encourage the community to make the most of the Water Park throughout the season."

The pool will be open every day of Summer except Christmas

Day. Opening hours will be from 9am to 6pm, plus early mornings on Wednesday and Friday from 6am for early-bird swimmers. The Summer season will run until April 2017. The park includes an 8-lane, 50-metre pool catering for lap swimmers and fun seekers alike, a Zig Zag Slide, a Corkscrew Slide, two children's pools, a Splash Pad situated in the Kiddies Play Area designed for toddlers and young children, a kiosk and BBQ area.

For more information and to stay informed 'like' the Kalamunda Water Park Facebook page to receive regular updates on what's happening, phone 9293 4432 or visit the website [kalamundawaterpark.ymcawa.org.au](http://kalamundawaterpark.ymcawa.org.au).



## Kalamunda town centre improvements



We are pleased to announce the installation of its first parklet on Haynes Street in the Kalamunda town centre. The parklet is now open for all to enjoy.

A parklet, or pop-up park, is designed to be installed on a temporary basis and offers a place to stop, to sit and to rest while taking in the activities of the street. Parklets are inexpensive to construct and maintain, can be relocated and provide a refreshed social space.

The Shire is also currently undertaking geotechnical studies for drainage works in the town centre, which are due to begin in early 2017 along Kalamunda Road, Canning Road, Haynes Street and Barber Street. This will pave the way for further enhancements.

For more information contact 9257 9999 or visit the website: [www.kalamunda.wa.gov.au](http://www.kalamunda.wa.gov.au)

## 5 year aspirational youth plan

The Shire has launched its new Youth Plan 2017-2022 following a report being presented to Council for endorsement in December.

After broad consultation to develop the plan and a six-week public

comment period in November, feedback received was very positive.

The plan focuses on youth interests and aspirations of the community and establishes focus areas and

strategies to guide the provision of youth services.

The four key focus areas of the Youth Plan are: Participation, Wellbeing, Communication and Organisation.

# Interpretive trail for Bibbulmun Terminus

An exciting new interpretive trail in Kalamunda will link the Northern Terminus of the iconic Bibbulmun Track to the Perth Hills Visitor Centre.

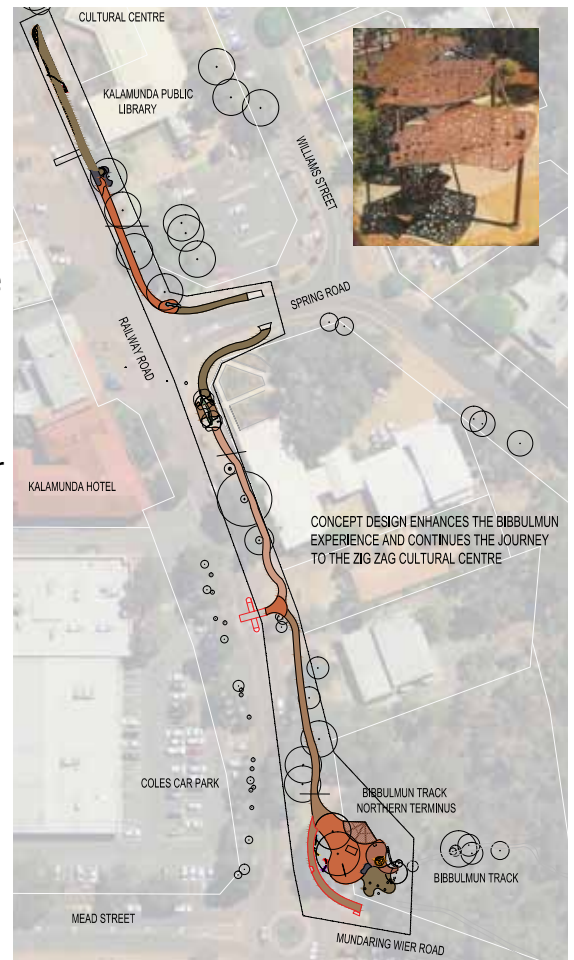
Concept designs for the Bibbulmun Track Northern Terminus and Interpretive Trail have been completed and construction is expected to start in early 2017.

The new walkway link will feature artistic seating and signage highlighting heritage connections, natural influences and flora and fauna of the region. The paving materials will also be inspired by the natural elements.

The Bibbulmun Track is an iconic environmental Western Australian landmark and attracts tourists and bushwalkers from around the world.

The project was supported by Tourism WA through the Tourism Demand Driver Infrastructure program.

The new Bibbulmun Track Northern Terminus and Interpretive Trail means there will be more visitors and tourists for Kalamunda, an even better experience for walkers of the Track and will connect more people with our local environment. For more information and to view the concept plan go to [kalamunda.wa.gov.au/bibbtrackterminus](http://kalamunda.wa.gov.au/bibbtrackterminus).



## Stirk Park masterplan



Following a comprehensive consultation period for the Stirk Park Masterplan project, consultants are now assessing feedback from the community in relation to two concept designs for Stirk Park.

Analysis will result in one consolidated concept design, which will be presented to Council in the New Year.

A key aspect of the planning process was to identify how the park is used by the community

and how residents feel it could be improved.

The Shire embarked on the development of a masterplan in March 2016 for the much-loved and historic Stirk Park to guide its sustainable development into the future.

The final masterplan will provide a staged concept plan for the next 10 years. Following endorsement from Council, the final plan will be made available for public comment in early 2017.

## Thank you

Thank you to everyone who attended the recent Strategic Community Plan workshops, completed an online survey and helped plan the future.

Led by an independent consultant, participants were given a snapshot outlining a number of issues and trends specific to the Shire. Each focus area was presented and participants were asked – what else should the Shire be focusing on and what are the top priority areas. The plan becomes the footprint in which each local government operates and sets its priorities.

Information from the workshops and the survey is now being compiled and an updated draft plan will be released for public comment in February 2017.





## Water harvesting innovation recognised

The Shire of Kalamunda has been recognised by the State Government for its innovation in the development of a trial water harvesting project at Hartfield Park. The reserve accommodates a variety of regionally significant sporting and recreation facilities, as well as an area of protected native bushland. The project allows the Shire to harvest storm water from the onsite Water Corporation Woodlupine main drain – where water would normally be channelled away into the urban water run-off system.

Water was extracted from the drain in Winter months and then re-injected into the onsite Leederville aquifer under the Department of Water Managed Aquifer Recharge (MAR) Policy.



The project has attracted a large amount of interest and is now being used as a demonstration site for managed aquifer recharge with harvested storm water showing potential to significantly reduce the supply and demand gap.

With rainfall decline, hotter Summers and increasing population growth, the pressure on groundwater resources at local and regional levels is increasing. By injecting harvested storm water into a groundwater system, the Shire is hoping to contribute to the

long term sustainability of the site, both environmentally and socially while catering for future growth development and to sustain our current groundwater extraction rates.

During our initial trial of the system, groundwater levels in the Leederville aquifer have been measured weekly in monitoring bores. The trial will continue next Winter. Results will be used to validate the technical viability of implementing a fully operational MAR scheme at this site.

## Green light for soccer upgrade

Exciting new upgrades are underway as part of the \$6 million Hartfield Park Redevelopment Project including a brand new 400-seat soccer grand stand and changeroom upgrade valued at close to \$700,000.

The Shire is delighted to see the development coming to fruition, with a number of upgrades already complete, including the expansion of Morrison Oval, implementation of field lighting, upgrading of playground equipment, development of new path network and starting of the Managed Aquifer Recharge Project.

Shire President Andrew Waddell said, "Sporting clubs based at Hartfield Park have seen amazing growth over the past five years and it is expected to continue into the future. Soccer in



particular is growing rapidly and will significantly benefit from the upgrade."

Hartfield Park is the largest sporting and recreation reserve within the Shire, containing a wide range of regional community sport and recreation infrastructure that services an extensive area. The Hartfield Park Redevelopment is managed by the Shire and

funded by the State Government of Western Australia and is set to be completed by December 2017.





# Wattle Grove bridging the brook

Construction of a new pedestrian bridge across Woodlupine Brook near the intersection of Thorogood Avenue and The Promenade will start in early 2017. This will allow for pedestrian access to the newly constructed Wattle Grove Shopping Centre across the Woodlupine Brook.

Subject to Council approval of the tender in late December an upgrade of the road network will see Wimbridge Road extended, creating a connection from the Hale Road/Arthur Road intersection to The Promenade.

The extension will include a culvert crossing of Woodlupine Brook and a roundabout at the new Hale Road/Arthur Road/Wimbridge Road intersection.

Currently temporary pedestrian access has been provided and further temporary pathways will be created to connect the pedestrian bridge to the shopping centre and The Promenade. All temporary pathways will be upgraded as part of the Woodlupine Living Stream



works with permanent materials.

The pathway between Lenihan Corner and Aldi Supermarket along Hale Road will be constructed ahead of the Hale Road widening project to facilitate pedestrian access. This involves extension of a culvert and the addition of a retaining wall to accommodate these works.

This project will significantly improve the road network and facilitate road access across Woodlupine Brook. These exciting new developments are a part of the Cell Nine Project, funded as a part of the developer contributions for the estate. The Shire looks forward to undertaking design and further enhancement works, including streetscaping in 2017.

## Community thrilled with centre upgrade

The Hartfield Park Recreation Centre celebrated its exciting new facelift with an Open Day on Saturday 5 November and the community has been thrilled with the result.

The \$330,000 upgrade includes a brand new high-quality sprung parquetry floor and new netball, soccer, badminton and basketball equipment. Many visitors on open day expressed how impressed

they were with the outcome. The new flooring caters for dance, martial arts, private functions, presentations and offers the community a state-of-the art playing environment for a wide range of indoor sports and competitions.

This new natural flooring not only gives durability, low impact on the body but also means much more versatility for the centre's use.





## Hills rural study

The Shire is identifying an area to be classified as a 'Priority Agricultural Zone'. This will secure key land for future agriculture in the important orchard region of Bickley, Carmel and Pickering Brook.

As part of this study, the Shire will be looking for ways to expand land uses and provide more options for landowners who live on agricultural properties. For more information call 9257 9999 or go to [www.kalamunda.wa.gov.au](http://www.kalamunda.wa.gov.au).

## Ray Owen masterplan works

Environmental, electrical, car parking and stormwater management studies are currently being undertaken to look at the implementation of the Ray Owen Masterplan, adopted by Council last year.

Ray Owen Reserve, located in Lesmurdie, is one of the Shire's premier sporting reserves. It is the home to the Ray Owen Sports Centre and a number of permanent user groups such as the Kalamunda & District

Basketball Association, Kalamunda & District Netball Association, Kalamunda & Districts Football Club, Lesmurdie-Mazenod Cricket Club, Hills BMX Club and Friends of the Ray Owen Reserve Group (FROG).

Works are currently underway on an upgrade of the BMX site with a new starting gate, kitchen, office and first aid post upgrade.

For more information please call 9257 9999.



## Pickering Brook Townsite Expansion

The State Government is currently considering a proposal to allow rural subdivision around the old townsite of Pickering Brook.

If approved, this will provide more opportunities for housing, improve the viability of the townsite, and give the surrounding business and farms more options for the future.

# Look out for snakes

Encounters with snakes are on the rise as they begin to emerge from their winter hideouts and become more active over the warmer months.

Snakes will normally try to avoid humans, but if you do come across one take the following precautions. At all times keep away and never antagonise it. Most snake bites occur when people try to catch or kill the snake.

If it's in the bush – keep a safe distance and walk away from or right around the snake. It will usually slither away if left alone.

If in your home or at a public space you can call the Department of Parks and Wildlife Wildcare

Helpline on 9474 9055. The Helpline staff have details of licensed operators who can safely remove and relocate snakes.

While calling the Helpline keep a safe distance and one eye on the snake. If possible, try not to let it out of your sight while waiting for the snake handler to arrive, as this will greatly assist in the response time in locating the snake.

When venturing outdoors, extra care should be taken near swamps and in bushland.

Stay alert, and take precautions such as wearing long pants and enclosed shoes.

Dog owners should take extra



care when walking their dogs near wetlands and bushland areas as they rarely survive a venomous snake bite.

At home you can reduce the risk of having a snake in your backyard by keeping it clear of long grass, old household rubbish and building materials, which provide snakes with shelter. If you are concerned about a snake on your property, bring your children and pets inside.



# Perth hills attracts a little bit of Italy

Tourism in the Perth hills continues to go from strength to strength, with new restaurant and vineyard La Fattoria now open. La Fattoria provides locals and visitors with an authentic Italian experience, including a traditional trattoria experience. A trattoria is a series of dishes shared at the table typical of an Italian family meal, without a menu.

Owners Eric and Lucy Radice said, "Currently three generations live and work on our 25 acre orchard. La Fattoria was created from a desire to share both our Italian heritage and the beauty of our property that nestles in the Piesse Brook Valley of the Perth hills.

"Dishes are rustic and have been inspired by past and present family recipes and driven by home grown and locally sourced seasonal produce where possible. We want people to come and have a conversation with Italy.

"La Fattoria is all about the experience. We want to share family traditions by offering hands on experiences for others to participate in. Throughout the year, opportunities exist to experience grape picking and stomping, tomato sauce making, Italian sausage making, olive preserving, new wine releases and more."

The opening of La Fattoria adds another gem to the Perth hills crown, which now boasts more than 12 boutique wineries and cideries with charming cellar doors and a range of restaurants and cafes, serving appetising menu options from simple platters to a la carte menus.

Rivalling the best tourism destinations in WA and offering an authentic and intimate experience, the Perth hills is best explored through a stunning self-drive tour.

Maps are available to download



from the Experience Perth Hills website or in person at the Perth Hills Visitor Centre.



## WA Cider Festival announced



The first WA Cider Festival will be held at the Core Cider House on 21 and 22 January 2017, showcasing some of the best craft ciders and their creators from across WA.

Revellers can enjoy free tastings, outstanding food and great entertainment – all within the beauty of the Core Cider lawn and orchard.

John Della-Franca, Owner of Core Cider House said "The WA Cider scene is exploding and there are some amazing craftspeople making cider in WA now.

"We wanted to bring together some of the iconic WA ciders



alongside some you may never have heard of to really showcase the great range we have on offer in Perth and WA.

"We're lucky to have a beautiful venue in the Perth hills and what better surrounds to have a cider festival than on an apple orchard."

For more festival information visit [www.waciderfestival.com.au](http://www.waciderfestival.com.au)

# Rising to the challenge

With the best interests of our people with disability at heart Council decided in November to transfer the Shire's services for National Disability Insurance Scheme (NDIS) supported Community Care recipients to the Rise Network.

The decision supports a belief that an organisation like Rise, with core business operations focused around disability services, would provide better outcomes for people receiving NDIS funding.

Shire President Andrew Waddell said, "We want the best for our people with a disability and we're conscious of the impact transitioning clients to the NDIS environment has had. As a local government body, it is increasingly difficult to continue supporting

people with a disability under the NDIS program, to the individual levels they need. It makes sense to have a dedicated, fully resourced and leading service provider, like Rise, with significant exposure and experience in delivery NDIS programs, do this."

The Shire and Rise are currently working together on mapping out the process and timeframes for the transition of services.

Justin O'Meara Smith, Divisional Manager – People with Disability at Rise said, "Rise has provided support for people with disability and their family and carers for more than 30 years. Whilst there are many details to work through, our commitment is to ensure we retain what people involved want and value from the services. We



value the relationship Rise has with the Shire and look forward to a smooth transition that helps people to get the support they want to live a great life."

The Shire will provide transition assistance to participants who choose to use Rise or any other alternative service provider.

## Looking after your best friend

Dogs are wonderful companions to have around but they can also cause distress to others if not looked after properly. The Shire reminds all dog owners – take precautions to look after your dog, and ensure it doesn't cause harm to others.

Here are some important things to remember:

- Dogs over three months must be registered and have regular vaccinations.
- Ensure your dog is wearing their collar and registration tag, so if it is found by a Ranger they can notify you.
- Make sure gates and fences are secure and you are able to confine the dog to your property, with lock gates to prevent people opening them without your knowledge.

- When out and about keep your dog on a leash and ensure it is held by someone capable of controlling the dog.
- Spend time training and exercising your dog. Specific areas are provided by the Shire to exercise your dog off a leash. Whilst in these areas your dog must be supervised at all times by someone capable of controlling it, and a lead must be carried.

Please remember to take note of signage. Dogs are not allowed on some turfed areas, including sporting ovals, as these require a lot of maintenance. Specific dog exercise areas have been provided, so make the most of these. Be a best friend to your dog and help make our community a safe and happy place.





# Swimming pool safety

As the weather begins to warm up we remind all swimming pool and spa owners to ensure pools are safe and ready for summer. Playing in and around water is fun but it's important to observe swimming pool legislation so everyone stays safe.

You can keep cool and safe this summer by following these simple swimming pool rules.

- Display a resuscitation chart on your pool fence.
- Ensure someone in your home is a qualified first aider.

- Familiarise children with water by taking them to swimming lessons run by accredited teachers.
- Empty paddling pools when they're not in use.
- Make sure all users are aware of the pool rules.
- Actively supervise children in and around your pool.

The Shire carries out swimming pool inspections to ensure enclosures are compliant and standards are maintained. We have a full-time Swimming Pool



Compliance Officer to assist residents. To arrange an inspection or for assistance call 9257 9999.

# Bobtails are back!

If you've noticed a few more bobtail lizards around on the roads and in the bush recently – it's because of the fantastic work Kanyana Wildlife Rehabilitation Centre and other wild care facilities across Perth, to bring them back to recovery from a severe flu.

Kanyana has been working closely with Murdoch University researchers to identify and treat the cause of a species threatening flu that bobtails have been battling with for more than 20 years. Kanyana Founder, June Butcher said while treatments have been successful, no one could come up with a clear diagnosis, until recently.

"We were finding bobtails with this illness for ages, and we've been successfully treating them, but we didn't know what kind of bug was causing it," she said.

"The treatment takes four to six weeks with antibiotics and nebulising (like for an asthmatic) to clear their airways of mucus. When they are like that, they can't

smell to find food, and so cannot eat. We knew the treatment would help them, but were also having trouble keeping up with demand."

In November, Murdoch University researchers announced the discovery of a new virus in the bobtail lizards, the first reported in a lizard species in the world.

Wildlife veterinarian Dr Bethany Jackson said, "Based on numbers presenting to rescue centres, this is one of WA's most common wildlife infectious disease issues and arguably one of the most urgent disease threats of wildlife in WA.

Dr O'Dea said ongoing research will examine how the virus is transmitted, the effects it has on the survival of bobtails in the wild, and those released after treatment.

June said, "We're really excited, that at long last we've got a diagnosis. This year, to my joy as soon as we had our first warm day, we have seen a few around,



proving the population has had time to recover."

"I urge the community to be careful on the roads. If you see one, stop and get it off the road as best you can. They are the only reptile that mates for life and always come back to the same mate every year."

"If you do pick up a bobtail in the bush please put it back where you find it. If they are displaced, it could take them years to eventually find each other again."

Call Kanayna on 9291 3900.



# What's On

## JANUARY

### **Remote Refraction** Exhibition by Janine Koefoed



7 to 22 January  
Zig Zag Gallery  
50 Railway Road, Kalamunda  
Ph: 9257 9998  
[www.zzcc.com.au/art-gallery](http://www.zzcc.com.au/art-gallery)

### **Kalamunda Night Market**



Friday 20 January 5:30pm–9pm  
Haynes St & Central Mall,  
Kalamunda  
[www.kalamundachamber.com.au](http://www.kalamundachamber.com.au)

### **Australia Day Celebrations**



Thursday 26 January 9am–6pm  
Kalamunda Water Park  
Cnr Collins & Canning Roads  
Kalamunda P 9293 4432  
[www.kalamundawaterpark.ymcawa.org.au](http://www.kalamundawaterpark.ymcawa.org.au)

### **Lions Club Art Awards**

28 January to 12 February  
Zig Zag Gallery, 50 Railway Road  
Kalamunda P: 9257 9998  
[www.zzcc.com.au/art-gallery](http://www.zzcc.com.au/art-gallery)

## FEBRUARY

### **Morning Music: Charlie Moon-Meader – Isn't She Lovely**



Wednesday 1 February  
10:15am morning tea, 11am show  
Kalamunda Performing Arts Centre  
48 Canning Road, Kalamunda  
[www.kalamunda.wa.gov.au/kpac](http://www.kalamunda.wa.gov.au/kpac)

### **Jazz In The Park**



Thursdays 2 February to 13 April  
6:30pm–8:30pm  
Stirk Park, Kalamunda  
[www.kysb.org](http://www.kysb.org)

### **The Home Organ Party** **Experience Concert**



Starring Barry Morgan  
Sunday 12 February 7:30pm  
Kalamunda Performing Arts Centre  
48 Canning Road, Kalamunda  
[www.kalamunda.wa.gov.au/kpac](http://www.kalamunda.wa.gov.au/kpac)

### **Author Talk with Tamara Burrell**

Author of The Big, Fat, Ugly Truth  
Thursday 16 February 6pm  
Forrestfield Library, 3 Salix Way

### **Kalamunda Night Market**

Friday 17 February 5:30pm–9pm  
Haynes St & Central Mall,  
Kalamunda  
[www.kalamundachamber.com.au](http://www.kalamundachamber.com.au)

### **Space is the Place**

Exhibition by Gary Burton  
18–26 February  
Zig Zag Gallery, 50 Railway Road  
Kalamunda P: 9257 9998  
[www.zzcc.com.au/art-gallery](http://www.zzcc.com.au/art-gallery)

### **Protective Behaviours:** **Promoting resilience in** **children and young people**

Tuesday 21 February  
5:45pm – 7:45pm  
Kalamunda Library  
7 Williams Street, Kalamunda  
[www.kalamunda.wa.gov.au/libraries](http://www.kalamunda.wa.gov.au/libraries)

## MARCH

### **Morning Music:** **Joyce Mathers & Avenue**



Wednesday 1 March  
10:15am morning tea, 11am show  
Kalamunda Performing Arts Centre  
48 Canning Road, Kalamunda  
[www.kalamunda.wa.gov.au/kpac](http://www.kalamunda.wa.gov.au/kpac)

### **The Wind Beneath My Wings**

Exhibition by Paul Margocsy  
4 to 26 March  
Zig Zag Gallery, 50 Railway Road  
Kalamunda P: 9257 9998  
[www.zzcc.com.au/art-gallery](http://www.zzcc.com.au/art-gallery)



**All About Bees and Beekeeping: Great tips and advice for beginners and avid apiarists!!**



Tuesday 7 March 6:15pm–7:30pm  
Lesmurdie Community Library  
21 Reid Road, Lesmurdie  
[www.kalamunda.wa.gov.au/libraries](http://www.kalamunda.wa.gov.au/libraries)

**Corymbia Multicultural Festival & "In The Mix" youth concert**



Saturday 11 March 2pm–8pm  
Hartfield Park  
Morrison Road, Forrestfield  
[www.kalamunda.wa.gov.au/events](http://www.kalamunda.wa.gov.au/events)

**The Songs That Made Memphis**



Starring the Sun Rising Band  
Sunday 12 March 7:30pm  
Kalamunda Performing Arts Centre  
48 Canning Road, Kalamunda  
[www.kalamunda.wa.gov.au/kpac](http://www.kalamunda.wa.gov.au/kpac)

**It's Opera not Oprah! A fun introduction to the art form**

Tuesday 14 March  
10:30am–11.30am  
High Wycombe Library  
14 Markham Road, High Wycombe  
[www.kalamunda.wa.gov.au/libraries](http://www.kalamunda.wa.gov.au/libraries)

**Kalamunda Night Market**

Friday 17 March 5:30pm–9pm  
Haynes St & Central Mall,  
Kalamunda  
[www.kalamundachamber.com.au](http://www.kalamundachamber.com.au)

**Bike Week**

Sunday 19 March 8:30am–11am  
Fleming Reserve, High Wycombe  
[www.kalamunda.wa.gov.au/bikeweek](http://www.kalamunda.wa.gov.au/bikeweek)

**Everybody Loves Lucy**

Starring Elise McCann  
Sunday 23 March 7:30pm  
Kalamunda Performing Arts Centre  
48 Canning Road, Kalamunda  
[www.kalamunda.wa.gov.au/kpac](http://www.kalamunda.wa.gov.au/kpac)

**Here, There, but Mainly There**

Exhibition by Anna Poplowska  
& Patricia Hartley  
31 March to 9 April  
Zig Zag Gallery, 50 Railway Road  
Kalamunda P: 9257 9998  
[www.zzcc.com.au/art-gallery](http://www.zzcc.com.au/art-gallery)

**APRIL  
National Youth Week event**



Sk8 Super Clinic & youth activities  
Saturday 1 April  
Fleming Reserve, High Wycombe  
[www.kalamunda.wa.gov.au/youth](http://www.kalamunda.wa.gov.au/youth)

**Morning Music: Jake Dennis – Chocolate Bluesman**



Wednesday 5 April  
10:15am morning tea, 11am show  
Kalamunda Performing Arts Centre  
48 Canning Road, Kalamunda  
[www.kalamunda.wa.gov.au/kpac](http://www.kalamunda.wa.gov.au/kpac)

**119<sup>th</sup> Annual Kalamunda Show**

Friday 7 April 5pm–10pm  
Saturday 8 April 10am – 10pm  
Kostera Oval & Agricultural Hall  
48 Canning Road, Kalamunda  
[www.kalamundashow.com.au](http://www.kalamundashow.com.au)

**Gooseberry Hill Arts & Crafts**

Saturday & Sunday 8 to 9 April  
Gooseberry Hill Hall  
Ledger Road, Gooseberry Hill  
[www.gooseberryhillartscraftsgroup.wordpress.com](http://www.gooseberryhillartscraftsgroup.wordpress.com)

**A Retrospective**

Exhibition by Valerie McDonald  
15 to 23 April  
Zig Zag Gallery, 50 Railway Road  
Kalamunda P: 9257 9998  
[www.zzcc.com.au/art-gallery](http://www.zzcc.com.au/art-gallery)

**Anzac Day March**

Saturday 15 April 10:30am start  
Top of Haynes St to War Memorial,  
Kostera Oval, Kalamunda

**Kalamunda Night Market**

Friday 21 April 5:30pm–9pm  
Haynes St & Central Mall,  
Kalamunda  
[www.kalamundachamber.com.au](http://www.kalamundachamber.com.au)

**FREE monthly e-news!!**

Keep informed on the latest free events, activities, notices and news via our free monthly e-newsletter direct to you each month! To subscribe simply email [kala.shire@kalamunda.wa.gov.au](mailto:kala.shire@kalamunda.wa.gov.au)

# Australia Day

kalamunda  
water park

Pool  
Party!

**2 FOR 1 ENTRY  
ENTERTAINMENT  
FUN FOR THE KIDS  
FREE BBQ HIRE**

**Please note: This is an  
ALCOHOL FREE EVENT**

**9am-6pm  
Thursday  
26 Jan 17**

**Proudly brought  
to you by the  
Shire of Kalamunda  
and YMCA WA**

## **Kalamunda Water Park**

Cnr of Collins and Canning Roads T (08) 9293 4432

E [info.kalamundawaterpark@ymcawa.org.au](mailto:info.kalamundawaterpark@ymcawa.org.au)

W [www.kalamundawaterpark.ymcawa.org.au](http://www.kalamundawaterpark.ymcawa.org.au)

