

POSITION DESCRIPTION

POSITION TITLE	Irrigation Maintainer
DIRECTORATE - SECTION	Asset Services / Parks & Environmental Services
LEVEL - EBA	5 - Operational
RESPONSIBLE TO	Supervisor Irrigation & Park Projects

OUR VISION

Connected Communities, Valuing Nature and Creating our Future Together.

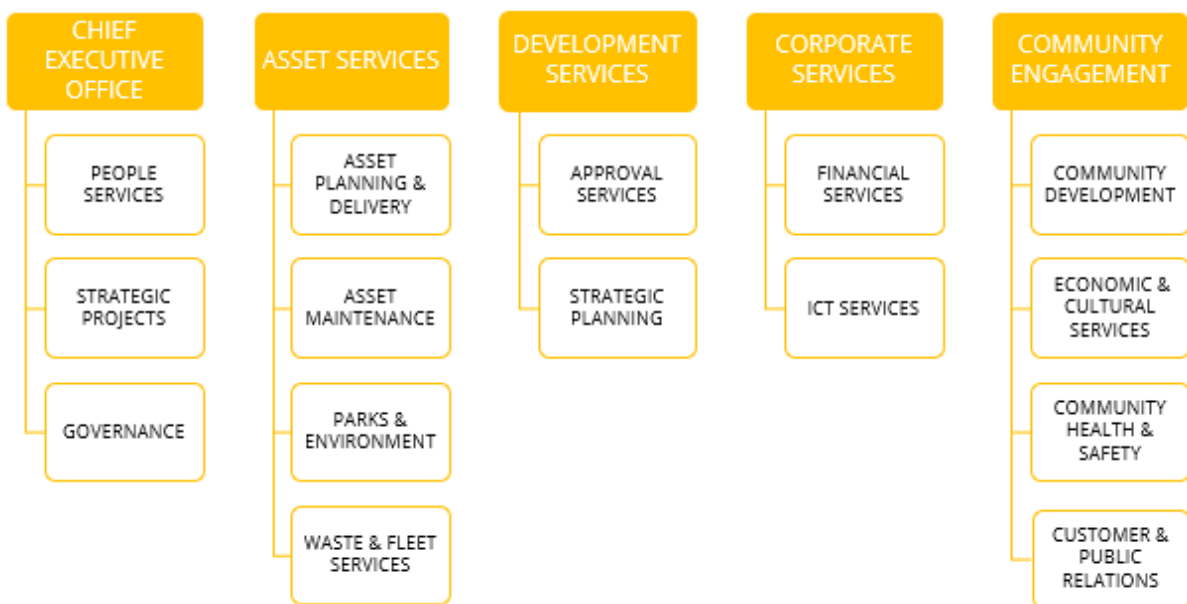
OUR SIMPLE GUIDING PRINCIPLES

Ensure everything we do will make Kalamunda socially, environmentally and economically sustainable.

OUR VALUES

- SERVICE** Provide excellent customer service at all times, through effective listening and understanding, in order to go beyond the commonplace when we serve others.
- PROFESSIONALISM** Maintain professionalism by upholding the corporate image, speaking carefully and acting quickly to ensure others know we are reliable, respectful and competent.
- QUALITY** Uphold quality and show initiative through clear thinking, planning mindfully, acting decisively, measuring carefully and regularly reviewing the goals to be achieved.

ORGANISATIONAL STRUCTURE & FUNCTIONS



THE OVERALL OBJECTIVE OF THIS POSITION

To assist the City of Kalamunda, meet its strategic goals, and meet the needs of the community. Efficiently and effectively operate, install, and maintain city of Kalamunda infield irrigation systems to accepted standards.

KEY RESULT AREAS

RETICULATION

- Understand the role of parks and environmental assets in providing amenity to the community.
- Implement programs and schedules to protect, rehabilitate, maintain, and enhance park and environmental assets.
- Understand the role of proactive maintenance as a tool for the reduction of risk to the community.
- Planned / programmed maintenance of reticulation systems, diagnosis, modifications, and repairs to existing systems including low voltage electrical work, installation of bores, interpretation of irrigation diagrams and plans, programming of water use, monthly reporting data collation.

ASSET MANAGEMENT

- Understand the role of asset management in the delivery of services to the community.
- Participate and engage with staff to deliver activities and programs to meet organisational goals and objectives.

BUDGET MANAGEMENT

1. Understand and work within the budget and financial constraints of the organisation, as directed.
2. Assist the Supervisor to seek quotes for and oversee contracted works.

CUSTOMER SERVICE

- Provide high quality advice to all stakeholders in a timely and professional manner.
- Ensure that the service delivery area maintains a high level of customer service across all activities and projects.

ORGANISATION SUPPORT

- Provide quality advice and technical support to the Supervisor Irrigation and Parks Projects in a timely and professional manner.
- Prepare accurate timecards, forms, logbooks, reports, letters, and other documents as required.
- Provide reports and cost estimate for small works for budget purposes.
- Prepare and deliver programs and timely responses to customer requests as directed.
- Be available to work on the rotational call out roster.
- Keep up to date records.

WORKPLACE HEALTH AND SAFETY

- Employees must take reasonable care for their own health and safety and that of others who may be affected by their actions or omissions.
- Comply, so far as they are reasonably able, with any reasonable instruction given by the City to allow the City to comply with WHS laws.
- Cooperate with any reasonable policy or procedure of the City relating to health or safety at the workplace.

WORKPLACE COMPETENCY

Uphold the City's values of Service, Professionalism and Quality and demonstrate behaviours that reflect the organisations values, supports cross functional teams and meets customer and organisational needs.

TRAINING/QUALIFICATION(S)

- Current Senior First Aid Certificate
- Construction White Card
- Minimum Certificate II Horticulture.
- Irrigation Australia Operator and Installer certification
- Current certification in Traffic Control / Basic Worksite Traffic.

ESSENTIAL KNOWLEDGE/SKILLS CRITERIA

- Extensive experience operating and maintaining large scale infield irrigation systems in a public situation
- Operation and maintenance of Signal and Rainbird site control systems
- Methodically diagnose system faults, including multicore and two wire systems
- Ability to read and interpret detailed irrigation plans and carry out basic system installations
- Competent use and maintenance of a range of applicable tools, plant, and equipment.
- Sound knowledge and experience diagnosing pump faults
- Ability to work under routine supervision as an individual or in a team environment
- Knowledge and experience in contemporary local government green space irrigation practices including installation, maintenance, and programming.
- Ability to solve problems of a routine nature, drawing on guidelines, experience, and a degree of personal judgement.
- Ability to make decision based on technical knowledge and procedures.
- Developed oral and written literacy and numeracy skills for effective team and stakeholder communication and for preparing logs, maintenance, and diagnosis reports.
- Ability to use personal computer applications.
- Competent use of mobile phones and technical devices pertaining to irrigation delivery systems.

DESIRABLE KNOWLEDGE/SKILLS CRITERIA

- Formal qualifications in a horticulture
- LR Truck licence

- Experience and understanding of community engagement.
- Knowledge and experience of contemporary amenity horticulture and turf management practices.

PHYSICAL REQUIREMENTS

The City welcomes people with a disability to apply for this position. Reasonable workplace accommodations and aids are available as required.

- Ability to use computers to read, analyse and produce written materials.
- Hearing, vision, and cognitive abilities required to engage with members of the public/stakeholders and other staff by phone, in person and in writing.
- Able to sit for extended periods of time.
- Cognitive and psychological abilities required to problem solve in a demanding administrative context (guidance for complex problem solving is available).
- Intermittent sitting (during driving) & standing/bending/trunk rotation.
- Climbing in & out of vehicles, accessing toolboxes and back of vehicle for equipment.
- Loading, reaching, and preparing vehicle for daily activities, carrying equipment.
- Driving, repetitive walking, squatting, kneeling, bending, standing, and negotiating uneven ground (creek lines, reserves) and level surfaces (sporting ovals).
- Manual dexterity needed for use of applicable tools and equipment.
- Digging and preparation of sites for reticulation laying.

DIVERSITY

The City of Kalamunda is committed to and values the advantages and benefits that equity, diversity, and inclusion (EDI) brings to all its staff. The City seeks to integrate the principles of EDI throughout the organisation, to enrich our perspective, improve performance, increase community value, and enhance the probability of achievement of our goals and objectives.

DRIVERS LICENCE

1. Possession of a current 'C-A' (Automatic) or 'C-B' (Manual) class driver's licence allowing the holder to drive legally in Western Australia.

AGILITY

This position description reflects the City's requirements at a point in time and is subject to change. The City may modify this position description at any time, provided the skills, qualifications, competence and training remains within a reasonable range of the original position.

REVIEWED BY: Supervisor Irrigation, Parks & Projects
DATE PD REVIEWED/APPROVED: 24 January 2023
