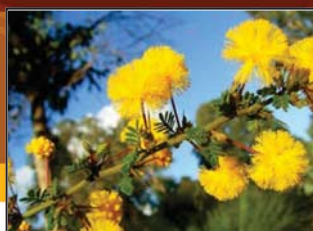


Corporate & Community Services Committee Meeting

Minutes for 10 September 2012



**shire of
kalamunda**

INDEX

1.0	OFFICIAL OPENING	3
2.0	ATTENDANCE, APOLOGIES AND LEAVE OF ABSENCE PREVIOUSLY APPROVED.....	3
3.0	PUBLIC QUESTION TIME.....	4
4.0	PETITIONS/DEPUTATIONS	4
5.0	CONFIRMATION OF MINUTES OF PREVIOUS MEETING.....	4
6.0	ANNOUNCEMENTS BY THE PERSON PRESIDING WITHOUT DISCUSSION.....	4
7.0	MATTERS FOR WHICH MEETING MAY BE CLOSED	4
8.0	DISCLOSURE OF INTERESTS.....	4
9.0	REPORTS TO COUNCIL	5
68.	CREDITORS' ACCOUNTS PAID DURING THE PERIOD 1 AUGUST TO 27 AUGUST 2012	6
69	DEBTORS AND CREDITORS REPORTS FOR THE PERIOD ENDED 31 JULY 2012	27
70.	CONFIDENTIAL ITEM - FUTURE OF LESMURDIE SCHOOL COMMUNITY LIBRARY – OUTCOME FOLLOWING PUBLIC COMMENT PERIOD	34
71.	COMMUNITY SPORT AND RECREATION FACILITIES FUND – ANNUAL AND FORWARD PLANNING GRANTS ROUND 2012/2013.....	36
72.	COMMUNITY GARDEN PROPOSAL AT THE OVERFLOW COTTAGE, LINDSAY STREET, KALAMUNDA – PUBLIC COMMENT PERIOD.	42
10.0	MOTIONS OF WHICH PREVIOUS NOTICE HAS BEEN GIVEN.....	50
11.0	QUESTIONS BY MEMBERS WITHOUT NOTICE.....	50
12.0	QUESTIONS BY MEMBERS OF WHICH DUE NOTICE HAS BEEN GIVEN.....	50
13.0	URGENT BUSINESS APPROVED BY THE PERSON PRESIDING OR BY DECISION.....	50
14.0	MEETING CLOSED TO THE PUBLIC.....	50
15.0	CLOSURE	52

MINUTES

1.0 OFFICIAL OPENING

The Deputy Chairman opened the meeting at 6.30pm, and welcomed Councillors, Staff and Members of the Public Gallery.

2.0 ATTENDANCE, APOLOGIES AND LEAVE OF ABSENCE PREVIOUSLY APPROVED

2.1 Attendance

Councillors

Donald McKechnie	(Shire President)	North Ward
Sue Bilich		North Ward
Margaret Thomas		North Ward
Allan Morton		South West Ward
Noreen Townsend	(Deputy Chairman)	South West Ward
Justin Whitten		South West Ward
Geoff Stallard		South East Ward
John Giardina		South East Ward
Frank Lindsey		South East Ward
Dylan O'Connor		North West Ward
Bob Emery		North West Ward

Members of Staff

James Trail	Chief Executive Officer
Rhonda Hardy	Director Corporate & Community Services
Darrell Forrest	Manager Governance
Darren Jones	Manager Community Services
Travis Moore	Coordinator Recreation Services
Sheena Bell	Library Services Team Leader
Michelle Clark	Executive Assistant to the CEO
Meri Comber	Governance Officer

Members of the Public 2

Members of the Press Nil

2.2 Apologies

Councillors

Martyn Cresswell	(Chairman)	North West Ward
------------------	------------	-----------------

Members of Staff

Clayton Higham	Director Development & Infrastructure Services
----------------	--

2.3 Leave of Absence Previously Approved Nil

3.0 PUBLIC QUESTION TIME

A period of not less than 15 minutes is provided to allow questions from the gallery on matters relating to the functions of this Committee. For the purposes of Minuting, these questions and answers are summarised.

3.1 Nil.

4.0 PETITIONS/DEPUTATIONS

4.1 Nil.

5.0 CONFIRMATION OF MINUTES OF PREVIOUS MEETING

5.1 That the Minutes of the Corporate & Community Services Committee Meeting held on 13 August 2012 are confirmed as a true and accurate record of the proceedings.

Moved: **Cr John Giardina**

Seconded: **Cr Margaret Thomas**

Vote: **CARRIED UNANIMOUSLY (11/0)**

6.0 ANNOUNCEMENTS BY THE PERSON PRESIDING WITHOUT DISCUSSION

6.1 Nil.

7.0 MATTERS FOR WHICH MEETING MAY BE CLOSED

7.1 **70. Future of Lesmurdie School Community Library – Outcome Following Public Comment Period** - Provided under separate cover.

Reason for Confidentiality - *Local Government Act 1995: Section 5.23(2) (c), "A contract entered into, or which may be entered into by the local government and which relates to a matter to be discussed at the meeting."*

8.0 DISCLOSURE OF INTERESTS

8.1 Disclosure of Financial and Proximity Interests

- a. Members must disclose the nature of their interest in matters to be discussed at the meeting. (Sections 5.60B and 5.65 of the *Local Government Act 1995*.)
- b. Employees must disclose the nature of their interest in reports or advice when giving the report or advice to the meeting. (Sections 5.70 and 5.71 of the *Local Government Act 1995*.)

8.1.1 Nil.

8.2 Disclosure of Interest Affecting Impartiality

- a. Members and staff must disclose their interest in matters to be discussed at the meeting in respect of which the member or employee had given or will give advice.

8.2.1 Nil.

9.0 REPORTS TO COUNCIL

Please Note: declaration of financial/conflict of interests to be recorded prior to dealing with each item.

Declaration of financial / conflict of interests to be recorded prior to dealing with each item.

68. Creditors' Accounts Paid During the period 1 August to 27 August 2012

Previous Items	N/A
Responsible Officer	Director Corporate & Community Services
Service Area	Finance
File Reference	FI-CRS-002
Applicant	N/A
Owner	N/A
Attachment 1	Creditor Payments during the period 1 August to 27 August 2012

PURPOSE

1. To receive creditors' accounts paid during the period 1 August to 27 August 2012 (Attachment 1).

BACKGROUND

2. It is a requirement of the *Local Government (Financial Management) Regulations 1996 (Regulation 12)* that a list of Creditors' Accounts paid is compiled each month.
3. The report is required to show payee's name, the amount of the payment, the date of the payment, and sufficient information to identify the transaction.

DETAILS

4. Accordingly, the list of creditors paid during the period 1 August to 27 August 2012 (Attachment 1).

STATUTORY AND LEGAL IMPLICATIONS

5. Nil.

POLICY IMPLICATIONS

6. Nil.

PUBLIC CONSULTATION/COMMUNICATION

7. Nil.

FINANCIAL IMPLICATIONS

8. Nil.

STRATEGIC AND SUSTAINABILITY IMPLICATIONS

Strategic Planning Implications

9. *Shire of Kalamunda Strategic Plan 2009 - 2014*
- | | | |
|----------|-------|--|
| Strategy | 5.5.2 | Provide financial services to support Council's operations and to meet sustainability planning, reporting and accountability requirements. |
|----------|-------|--|

Sustainability Implications

Social Implications

10. Nil.

Economic Implications

11. Nil.

Environmental Implications

12. Nil.

OFFICER COMMENT

13. Nil.

A Councillor queried EFT24708 (payment to Liberty Oil Western Australia Ltd)for fuel and asked if this company now had the contract/tender for all Shire of Kalamunda fuel requirements. This question was taken on notice by Director Corporate & Community Services.

Voting Requirements: Simple Majority

COMMITTEE RECOMMENDATION TO COUNCIL (C&C 68/2012)

That Council:

1. Receives the list of creditors paid during the period 1 August to 27 August 2012 (Attachment 1) in accordance with the requirements of the *Local Government (Financial Management) Regulations 1996 (Regulation 12)*.

Moved: **Cr Margaret Thomas**

Seconded: **Cr Justin Whitten**

Vote: **CARRIED UNANIMOUSLY (11/0)**

Attachment 1

Shire of Kalamunda				
Creditors Payments for the period 1 August to 27 August 2012				
Chq/EFT	Date	Name	Description	Amount
543	01/08/2012	AUSTRALIAN TAXATION OFFICE	TAXATION	130,655.07
544	02/08/2012	WESTERN AUSTRALIAN TREASURY CORPORATION	LOAN # 218 INTEREST PAYMENT	1,996.23
545	08/08/2012	LES MILLS AUSTRALIA	MONTHLY LICENCE FEE	965.48
546	09/08/2012	IINET TECHNOLOGIES PTY LTD	INTERNET ACCESS	958.90
547	10/08/2012	COMMONWEALTH BANK - BUSINESS CARD	BUSINESS CORPORATE CARD - VARIOUS PURCHASES	15,079.30
548	14/08/2012	WESTERN AUSTRALIAN TREASURY CORPORATION	LOAN # 219 FIXED COMPONENT	17,109.86
549	15/08/2012	AUSTRALIAN TAXATION OFFICE	TAXATION	127,848.39
EFT24652	02/08/2012	NEVERFAIL SPRINGWATER LTD (KALA LIB)	BOTTLED WATER SUPPLIES / MAINTENANCE	16.25
EFT24653	02/08/2012	FITNESS AUSTRALIA LTD	TWO YEAR REGISTRATION FOR APPLICATION FOR EXERCISE PROFESSIONAL	220.00
EFT24654	02/08/2012	CABCHARGE AUSTRALIA LIMITED	CABCHARGE FEES	164.67
EFT24655	02/08/2012	CARLA BOND	GROUP FITNESS CLASSES INSTRUCTOR	406.23
EFT24656	02/08/2012	PATNASHEA HERSHOW BELL	RATES REFUND	1,292.08
EFT24657	02/08/2012	DONALD ROSS & MARGERY ROSE GRIEVES	RATES REFUND	98.47
EFT24658	02/08/2012	WA LOCAL GOVERNMENT SUPERANNUATION PLAN	SUPERANNUATION CONTRIBUTIONS	77,173.04
EFT24659	02/08/2012	SHIRE OF KALAMUNDA STAFF SOCIAL CLUB	PAYROLL DEDUCTIONS	248.00
EFT24660	02/08/2012	CHILD SUPPORT AGENCY	PAYROLL DEDUCTIONS	379.24
EFT24661	02/08/2012	GULLY VIEWS NEWSAGENCY	SUBSCRIPTIONS & NEWSPAPERS FOR VARIOUS LOCATIONS	920.71
EFT24662	02/08/2012	KALAMUNDA AUTO ELECTRICS	PLANT / VEHICLE PARTS	605.00
EFT24663	02/08/2012	LANDGATE - VALUATIONS	VALUATIONS FOR VARIOUS LOCATIONS	1,602.73
EFT24664	02/08/2012	WALKERS HARDWARE (MITRE 10)	HARDWARE SUPPLIES	158.63
EFT24665	02/08/2012	KALAMUNDA FENCING & GATE MAKERS	SUPPLY / REPAIR FENCE	1,112.50
EFT24666	02/08/2012	EASTERN METROPOLITAN REGIONAL COUNCIL	KEY BOND REFUND	50.00
EFT24667	02/08/2012	DOMUS NURSERY	GARDEN SUPPLIES FOR VARIOUS LOCATIONS	379.23
EFT24668	02/08/2012	SANDGROPER SEPTICS	PUMPOUT SEPTIC TANKS AT VARIOUS LOCATIONS	643.59
EFT24669	02/08/2012	MAJOR MOTORS PTY LTD	PLANT / VEHICLE PARTS	109.30
EFT24670	02/08/2012	BRADOCK PODIATRY SERVICES PTY LTD	PODIATRY SERVICES AT JACK HEALEY CENTRE	1,348.65
EFT24671	02/08/2012	KALA BOB KATS PTY LTD	PLANT EQUIPMENT AND OPERATOR HIRE FOR VARIOUS LOCATIONS	3,173.50

Shire of Kalamunda				
Creditors Payments for the period 1 August to 27 August 2012				
Chq/EFT	Date	Name	Description	Amount
EFT24672	02/08/2012	GRIMES CONTRACTING PTY LTD	CONTRACTOR BUILDING MAINTENANCE FOR VARIOUS BUILDINGS	66.00
EFT24673	02/08/2012	HILL TOP TROPHIES (MILPROP WA)	SUPPLY OF NAME BADGES	99.00
EFT24674	02/08/2012	FOODWORKS FRESH FORRESTFIELD	GROCERY SUPPLIES	260.27
EFT24675	02/08/2012	KALAMUNDA & DISTRICTS JUNIOR FOOTBALL CLUB	KIDSPORT FUNDING FOR VARIOUS PLAYERS	85.00
EFT24676	02/08/2012	STAFFLINK INDUSTRIAL	HIRE OF TEMPORARY STAFF FOR DEPOT / ADMIN	1,535.78
EFT24677	02/08/2012	CRABBS KALAMUNDA (IGA)	GROCERY SUPPLIES	718.06
EFT24678	02/08/2012	FORRESTFIELD FOOTBALL CLUB	KIDSPORT FUNDING FOR VARIOUS PLAYERS	200.00
EFT24679	02/08/2012	KALAMUNDA PLUMBING & ELECTRICAL	PLUMBING REPAIRS / MAINTENANCE FOR VARIOUS LOCATIONS	1,541.10
EFT24680	02/08/2012	HAWLEY'S BOBCAT SERVICE	PLANT EQUIPMENT AND OPERATOR HIRE FOR VARIOUS LOCATIONS	3,173.50
EFT24681	02/08/2012	LANDSCAPE ARCHITECTURAL SERVICES PTY LTD	FOOTPATH DEPOSIT REFUND	950.00
EFT24682	02/08/2012	J CORP PTY LTD	FOOTPATH DEPOSIT REFUND	700.00
EFT24683	02/08/2012	HILL TOP GROUP PTY	CONTRACTOR BUILDING MAINTENANCE FOR VARIOUS BUILDINGS	1,945.08
EFT24684	02/08/2012	INSTITUTE OF PUBLIC WORKS ENGINEERING AUSTRALIA WA	MEMBERSHIP SUBSCRIPTION FEES	159.49
EFT24685	02/08/2012	RUSSELL THURSTON ROWLEY	RATES REFUND	637.97
EFT24686	02/08/2012	HASTIE SERVICES PTY LTD	AIRCONDITIONING MAINTENANCE / REPAIRS FOR VARIOUS LOCATIONS	264.56
EFT24687	02/08/2012	CELEBRATION HOMES	FOOTPATH DEPOSIT REFUND	2,100.00
EFT24688	02/08/2012	JODI VAN NUS	HALL AND KEY BOND REFUND	350.00
EFT24689	02/08/2012	THE CRUCIBLE PROJECT	KEY BOND REFUND	50.00
EFT24690	02/08/2012	TREVOR MALCOLM DALTON	RATES REFUND	364.31
EFT24691	02/08/2012	HILLS GOURMET	CATERING SUPPLIES	156.00
EFT24692	02/08/2012	HARVEY FRESH	MILK SUPPLY FOR ADMIN / DEPOT	146.43
EFT24693	02/08/2012	SIGN-A -RAMA	SUPPLY AND INSTALLATION OF SIGNAGE	264.00
EFT24694	02/08/2012	AFFORDABLE LIVING HOMES	FOOTPATH DEPOSIT REFUND	950.00
EFT24695	02/08/2012	WATTLE GROVE PLANT FARM	GARDEN / VERGE SUPPLIES	121.00
EFT24696	02/08/2012	CELEBRATION NOMINEES PTY LTD	PLANNING APPLICATION FEE REFUND	775.86

Shire of Kalamunda				
Creditors Payments for the period 1 August to 27 August 2012				
Chq/EFT	Date	Name	Description	Amount
EFT24697	02/08/2012	MAIDA VALE DELIVERY ROUND	PAPER AND MAGAZINES DELIVERIES FOR HIGH WYCOMBE LIBRARY	59.45
EFT24698	02/08/2012	G.D.CHARLTON	PODIATRY SERVICES AT JACK HEALEY CENTRE	379.75
EFT24699	02/08/2012	AUSTRALIAN SUPERANNUATION	SUPERANNUATION CONTRIBUTIONS	739.74
EFT24700	02/08/2012	JAMES TRAIL	REIMBURSEMENT OF VARIOUS COSTS	1,484.10
EFT24701	02/08/2012	RESIDENTIAL BUILDING WA PTY LTD	FOOTPATH DEPOSIT REFUNDS	1,400.00
EFT24702	02/08/2012	KALAMUNDA MEN'S SHED INC	DONATION FOR HELP WITH 'PLANTS TO RESIDENTS' DAY	500.00
EFT24703	02/08/2012	PETER TUCATS SUPERANNUATION FUND	SUPERANNUATION CONTRIBUTIONS	229.73
EFT24704	02/08/2012	BINDALE SUPERANNUATION FUND	SUPERANNUATION CONTRIBUTIONS	64.92
EFT24705	02/08/2012	DARREN JONES	REIMBURSEMENT OF VARIOUS COSTS	594.92
EFT24706	02/08/2012	NEVERFAIL SPRINGWATER LTD (PETER ANDERTON CEN)	BOTTLED WATER SUPPLIES / MAINTENANCE	45.00
EFT24707	02/08/2012	NEVERFAIL SPRINGWATER LTD (ZZCC)	BOTTLED WATER SUPPLIES / MAINTENANCE	25.05
EFT24708	02/08/2012	LIBERTY OIL WESTERN AUSTRALIA PTY LTD	FUEL	36,766.75
EFT24709	02/08/2012	PH CONCRETE	FOOTPATH MAINTENANCE / REPAIRS FOR VARIOUS LOCATIONS	9,694.63
EFT24710	02/08/2012	JORGE'S CONTRACTING SERVICES	CLEANING SERVICES AT PETER ANDERTON CENTRE	2,412.85
EFT24711	02/08/2012	FONZ'S BOBCAT & TRUCK HIRE	PLANT EQUIPMENT AND OPERATOR HIRE FOR VARIOUS LOCATIONS	5,324.00
EFT24712	02/08/2012	BEAVER TREE SERVICES	TREE REMOVAL / PRUNING FOR VARIOUS LOCATIONS	825.00
EFT24713	02/08/2012	R S L CARE EASTERN HILLS	KEY BOND REFUND	50.00
EFT24714	02/08/2012	VISION SUPER PTY LTD	SUPERANNUATION CONTRIBUTIONS	626.67
EFT24715	02/08/2012	RYLAN PTY LTD	SUPPLY AND LAY KERBING AT VARIOUS LOCATIONS	1,353.00
EFT24716	02/08/2012	FIRE 4 HIRE	VERGE / RESERVE MAINTENANCE AT VARIOUS LOCATIONS	906.50
EFT24717	02/08/2012	ANGELA CANCI	PODIATRY SERVICES AT JACK HEALEY SERVICES	417.72
EFT24718	02/08/2012	UNIQUE WASTE MANAGEMENT SERVICES	HIRE OF TRUCK AND OPERATOR TO TRANSPORT WASTE BINS FROM WALLISTON TRANSFER STATION TO VARIOUS SITE	1,386.00
EFT24719	02/08/2012	CATHOLIC SUPER	SUPERANNUATION CONTRIBUTIONS	187.60
EFT24720	02/08/2012	KALAJOS SCHOOL OF GYMNASTICS	KIDSPORT FUNDING FOR VARIOUS PLAYERS	400.00

Shire of Kalamunda				
Creditors Payments for the period 1 August to 27 August 2012				
Chq/EFT	Date	Name	Description	Amount
EFT24721	02/08/2012	RICHARD L MILLOY	REIMBURSEMENT OF VARIOUS COSTS	49.90
EFT24722	02/08/2012	CHELSEA MCGILL	PARTIAL REFUND OF GYM MEMBERSHIP AT HARTFIELD PARK RECREATION CENTRE	195.00
EFT24723	02/08/2012	QTC CONSULTING PTY LTD	COURSE FEES FOR DIPLOMA OF PROJECT MANAGEMENT	3,700.00
EFT24724	02/08/2012	LISA-MARIE OLIVER	BIRTHDAY PARTY BOND REFUND - HARTFIELD PARK RECREATION CENTRE	50.00
EFT24725	02/08/2012	MPJ (WA) PTY LTD	SUPERANNUATION CONTRIBUTIONS	414.00
EFT24726	02/08/2012	PHILIP SWAIN CONSULTING	CONTRACT SERVICES - ENVIRONMENTAL HEALTH	3,880.00
EFT24727	02/08/2012	TAMARA HOCKING	REIMBURSEMENT OF VARIOUS COSTS	199.00
EFT24728	02/08/2012	BREAST CANCER CARE WA	CONTRIBUTION TO PURPLE BRA DAY FUNDRAISING - FRIDAY 22 JUNE 2012	223.00
EFT24729	02/08/2012	CHICAS CATTERY	HALL BOND REFUND	300.00
EFT24730	02/08/2012	TANIKA SHAMBROOK	HALL AND KEY BOND REFUND	350.00
EFT24731	02/08/2012	KAYE HOUGHTON	HALL AND KEY BOND REFUND	1,050.00
EFT24732	16/08/2012	CAPITAL RECYCLING / DEMOLITION	PLANT EQUIPMENT HIRE AT VARIOUS LOCATIONS	12,342.00
EFT24733	16/08/2012	MOTORCHARGE - WRIGHT EXPRESS FUEL CARDS AUSTRALIA LTD	FUEL - JULY 12	4,405.32
EFT24734	16/08/2012	NEVERFAIL SPRINGWATER LTD (KALA LIB)	BOTTLED WATER SUPPLIES / MAINTENANCE	16.25
EFT24735	16/08/2012	1ST FORRESTFIELD SCOUT GROUP	KIDSPORT FUNDING FOR VARIOUS PLAYERS	400.00
EFT24736	16/08/2012	PLANTRITE	GARDEN / RESERVE SUPPLIES FOR WOODLUPINE LIVING STREAM PROGRAMME	3,667.40
EFT24737	16/08/2012	LANDMARK ENGINEERING AND DESIGN	INSTALLATION AND DELIVERY OF SHELTER AT WATTLE GROVE	17,322.80
EFT24738	16/08/2012	IAN KINNER AND ASSOCIATES	PROFESSIONAL CONSULTING AND ADVISORY SERVICES	750.00
EFT24739	16/08/2012	PAUL'S BUS COMPANY PTY LTD	HIRE OF BUS FOR PROJECTS TOURS FOR COMMUNITY FACILITIES & INFRASTRUCTURE	330.00
EFT24740	16/08/2012	CARLA BOND	GROUP FITNESS CLASSES INSTRUCTOR	358.18
EFT24741	16/08/2012	NEVERFAIL SPRINGWATERLTD (FORRESTFIELD LIB)	BOTTLED WATER SUPPLIES / MAINTENANCE	16.25
EFT24742	16/08/2012	DOMINIC CARBONE & ASSOCIATES	CONSULTANCY FEES FOR CLEANING OF BUILDERS AND FACILITIES TENDER T1202	3,388.00

Shire of Kalamunda				
Creditors Payments for the period 1 August to 27 August 2012				
Chq/EFT	Date	Name	Description	Amount
EFT24743	16/08/2012	ART ON THE MOVE	REGISTRATION FOR 1 STAFF TO ATTEND - ART ON THE MOVE" TRAINING	330.00
EFT24744	16/08/2012	PICTON PRESS	PRINTING OF BROCHURES FOR VARIOUS EVENTS	4,876.50
EFT24745	16/08/2012	THE PLANNING GROUP WA PTY LTD	FORRESTFIELD INDUSTRIAL AREA - METROPOLITAN REGION SCHEME AMENDMENT SUBMISSION - STAGE 3	19,283.00
EFT24746	16/08/2012	VIP CARPET AND UPHOLSTERY CLEANING SERVICE	CARPET CLEANING AT VARIOUS LOCATIONS	840.00
EFT24747	16/08/2012	ROBYN BEARDSSELL	PAYMENT TO CONSIGNMENT SUPPLIER FOR GOODS SOLD AT THE ZIG ZAG CULTURAL - 01/07/12 - 31/07/12	28.00
EFT24748	16/08/2012	EDWARD OVERTON	HALL AND KEY BOND REFUND	550.00
EFT24749	16/08/2012	GARY MARTIN LAWNMOWING	VERGE / RESERVE MOWING FOR VARIOUS LOCATIONS	240.00
EFT24750	16/08/2012	WA LOCAL GOVERNMENT SUPERANNUATION PLAN	SUPERANNUATION CONTRIBUTIONS	76,254.12
EFT24751	16/08/2012	SHIRE OF KALAMUNDA STAFF SOCIAL CLUB	PAYROLL DEDUCTIONS	240.00
EFT24752	16/08/2012	CHILD SUPPORT AGENCY	PAYROLL DEDUCTIONS	392.19
EFT24753	16/08/2012	AUSTRALIA POST	POSTAL EXPENSES / COUNTER BILLPAY TRANSACTION FEES	5,026.84
EFT24754	16/08/2012	CLEANAWAY (7004295)	DISPOSAL FEES	10,426.11
EFT24755	16/08/2012	GULLY VIEWS NEWSAGENCY	SUBSCRIPTIONS & NEWSPAPERS FOR VARIOUS LOCATIONS	17.02
EFT24756	16/08/2012	KALAMUNDA AUTO ELECTRICS	PLANT / VEHICLE PARTS	1,116.50
EFT24757	16/08/2012	WA LOCAL GOVERNMENT ASSOCIATION	REGISTRATION FOR 1 STAFF TO ATTEND - LOCAL GOVERNMENT EMERGENCY MANAGEMENT FORUM	95.00
EFT24758	16/08/2012	MCLEODS BARRISTERS & SOLICITORS	LEGAL EXPENSES	1,527.79
EFT24759	16/08/2012	NAB GOVERNMENT BUSINESS	AUDIT CERTIFICATE CONFIRMATION	70.00
EFT24760	16/08/2012	LANDGATE - VALUATIONS	VALUATIONS FOR VARIOUS LOCATIONS	916.24
EFT24761	16/08/2012	WALKERS HARDWARE (MITRE 10)	HARDWARE SUPPLIES	3.95
EFT24762	16/08/2012	A & S HILL	ELECTRICAL REPAIRS / MAINTENANCE FOR VARIOUS LOCATIONS	35,258.30
EFT24763	16/08/2012	3 VODAFONE HUTCHISON AUSTRALIA PTY LTD	COMMUNICATION EXPENSES	2,080.56
EFT24764	16/08/2012	FASTA COURIERS	COURIER FEES	514.95
EFT24765	16/08/2012	BRADOCK PODIATRY SERVICES PTY LTD	PODIATRY SERVICES AT JACK HEALEY CENTRE	513.21

Shire of Kalamunda				
Creditors Payments for the period 1 August to 27 August 2012				
Chq/EFT	Date	Name	Description	Amount
EFT24766	16/08/2012	LINDLEY CONTRACTING	PLUMBING REPAIRS / MAINTENANCE FOR VARIOUS LOCATIONS	1,572.00
EFT24767	16/08/2012	KALA BOB KATS PTY LTD	PLANT EQUIPMENT AND OPERATOR HIRE FOR VARIOUS LOCATIONS	2,673.00
EFT24768	16/08/2012	GRIMES CONTRACTING PTY LTD	CONTRACTOR BUILDING MAINTENANCE FOR VARIOUS BUILDINGS	6,420.76
EFT24769	16/08/2012	KENNEDY'S TREE SERVICES	TREE REMOVAL / PRUNING FOR VARIOUS LOCATIONS	1,540.00
EFT24770	16/08/2012	FOODWORKS FRESH FORRESTFIELD	GROCERY SUPPLIES	1,239.21
EFT24771	16/08/2012	WA LOCAL GOVERNMENT ASSOCIATION (ADVERTISING)	ADVERTISING FOR VARIOUS JOBS / EVENTS	8,692.43
EFT24772	16/08/2012	STAFFLINK INDUSTRIAL	HIRE OF TEMPORARY STAFF FOR DEPOT / ADMIN	6,349.35
EFT24773	16/08/2012	CHICKEN TREAT	CATERING SUPPLIES	188.75
EFT24774	16/08/2012	CRABBS KALAMUNDA (IGA)	GROCERY SUPPLIES	737.87
EFT24775	16/08/2012	VENTURA HOMES PTY LTD	FOOTPATH DEPOSIT REFUNDS	2,800.00
EFT24776	16/08/2012	CONTENT LIVING PTY LTD	FOOTPATH DEPOSITS REFUNDS	2,100.00
EFT24777	16/08/2012	DALE ALCOCK HOMES PTY LTD	FOOTPATH DEPOSIT REFUNDS	1,500.00
EFT24778	16/08/2012	HOMEBUYERS CENTRE	FOOTPATH DEPOSIT REFUNDS	1,400.00
EFT24779	16/08/2012	PLUNKETT HOMES	FOOTPATH DEPOSIT REFUND	700.00
EFT24780	16/08/2012	ST JOHN AMBULANCE AUSTRALIA (WA) INC	REGISTRATION FOR 3 STAFF TO ATTEND FIRST AID COURSE	597.00
EFT24781	16/08/2012	HAWLEY'S BOBCAT SERVICE	PLANT EQUIPMENT AND OPERATOR HIRE FOR VARIOUS LOCATIONS	9,322.50
EFT24782	16/08/2012	FORRESTFIELD NEWSPAPERS & MAGAZINES DELIVERY	NEWSPAPERS / MAGAZINES DELIVERIES FOR VARIOUS LOCATIONS	28.50
EFT24783	16/08/2012	DANMAR HOMES PTY LTD	FOOTPATH DEPOSIT REFUND	700.00
EFT24784	16/08/2012	FIRE AND EMERGENCY SERVICES AUTHORITY WA	50% COST SHARING FOR THE COMMUNITY FIRE MANAGER FOR THE PERIOD 30/03/12 - 28/06/12	17,159.81
EFT24785	16/08/2012	HILL TOP GROUP PTY	CONTRACTOR BUILDING MAINTENANCE FOR VARIOUS BUILDINGS	4,415.13
EFT24786	16/08/2012	A1 WALLISTON TREE SERVICES	TREE REMOVAL / PRUNING FOR VARIOUS LOCATIONS	220.00

Shire of Kalamunda				
Creditors Payments for the period 1 August to 27 August 2012				
Chq/EFT	Date	Name	Description	Amount
EFT24787	16/08/2012	NEW GENERATION HOMES - TANGENT NOMINEES PTY LTD	FOOTPATH DEPOSIT REFUND	700.00
EFT24788	16/08/2012	CELEBRATION HOMES	FOOTPATH DEPOSIT REFUND	700.00
EFT24789	16/08/2012	OASIS PATIOS	PLANNING APPLICATION FEE REFUND	139.00
EFT24790	16/08/2012	ABBOTT STORAGE SYSTEMS	RACKING FRAMES AND SHELF SYSTEM FOR THE WORKSHOP	1,419.44
EFT24791	16/08/2012	DEBRA JOSE JEWELLERY	PAYMENT TO CONSIGNMENT SUPPLIER FOR GOODS SOLD AT THE ZIG ZAG CULTURAL CENTRE - 01/07/12 - 31/07/12	71.40
EFT24792	16/08/2012	SOUTHERN WIRE	SUPPLY AND INSTALLATION OF FENCING / GATES AT MAIDA VALE RESERVE	9,124.50
EFT24793	16/08/2012	DEPARTMENT OF PREMIER AND CABINET	GOVERNMENT GAZETTE ADVERTISING	130.00
EFT24794	16/08/2012	PERRY ENVIRONMENTAL CONTRACTING	WEED CONTROL AT VARIOUS LOCATIONS	11,294.25
EFT24795	16/08/2012	MIDLAND OUTDOOR CENTRE	PLANNING APPLICATION FEE REFUND	139.00
EFT24796	16/08/2012	HIGHBURY HOMES (WA) PTY LTD	FOOTPATH DEPOSIT REFUND	700.00
EFT24797	16/08/2012	BIG W	SUPPLIES FOR HARTFIELD PARK RECREATION CENTRE	197.88
EFT24798	16/08/2012	PERTH HILLS VIGNERONS ASSOCIATION	BOND REFUND FOR USE OF SEMINAR ROOM AT ZIG ZAG CULTURAL CENTRE	500.00
EFT24799	16/08/2012	DUN & BRADSTREET (AUSTRALIA) PTY LTD	DEBT COLLECTION FEES FOR RATES	2,343.39
EFT24800	16/08/2012	MILUC PROPERTY DEVELOPMENT	WORKS BOND REFUNDS FOR VARIOUS LOCATIONS	64,895.58
EFT24801	16/08/2012	BGC RESIDENTIAL PTY LTD	PLANNING APPLICATION FEE REFUND	1,729.61
EFT24802	16/08/2012	OPUS INTERNATIONAL CONSULTANTS (PCA) LIMITED	CONSULTING FEES - KALAMUNDA TOWNSCAPE IMPROVEMENT PLAN	16,500.00
EFT24803	16/08/2012	MASTERS ATHLETICS WA	KEY BOND REFUND	50.00
EFT24804	16/08/2012	HITACHI CONSTRUCTION MACHINERY	PLANT / VEHICLE PARTS	1,906.44
EFT24805	16/08/2012	HILLS GOURMET	CATERING SUPPLIES	416.98
EFT24806	16/08/2012	GEMMILL HOMES	FOOTPATH DEPOSIT REFUNDS	4,900.00
EFT24807	16/08/2012	HARVEY FRESH	MILK SUPPLY FOR ADMIN / DEPOT	175.50
EFT24808	16/08/2012	TIMOTHY KENNETH JOHNSON	CROSSOVER CONTRIBUTION	350.00
EFT24809	16/08/2012	PECI PROPERTIES PTY LTD	WORKS BOND REFUND	58,845.71

Shire of Kalamunda				
Creditors Payments for the period 1 August to 27 August 2012				
Chq/EFT	Date	Name	Description	Amount
EFT24810	16/08/2012	KALAMUNDA SWEEPING	ROAD / PATH SWEEPING AT VARIOUS LOCATIONS	5,907.99
EFT24811	16/08/2012	ELECTRICITY NETWORKS CORP T/A WESTERN POWER	SUPPLY UPGRADE - 40 COLLINS RD KALAMUNDA	50,502.00
EFT24812	16/08/2012	FORRESTFIELD TENNIS CLUB (INC)	FORRESTFIELD TENNIS CLUB HIRE FEES FROM HPRC - 1/7/12 - 31/7/12	168.00
EFT24813	16/08/2012	HUGHES BUILDERS PTY LTD	FOOTPATH DEPOSIT REFUND	700.00
EFT24814	16/08/2012	KERB - FIX	KERB REPAIRS / MAINTENANCE FOR VARIOUS LOCATIONS	1,047.20
EFT24815	16/08/2012	EASTERN REGION SECURITY	SECURITY SERVICES TO VARIOUS SHIRE BUILDINGS	6,510.21
EFT24816	16/08/2012	SECURE TRAFFIC	TRAFFIC MANAGEMENT FOR VARIOUS LOCATIONS	14,250.50
EFT24817	16/08/2012	EASIFLEET MANAGEMENT	NOVATED LEASING	4,458.49
EFT24818	16/08/2012	AVALON SHEDS & STABLES	PLANNING APPLICATION FEE REFUND	139.00
EFT24819	16/08/2012	AGED & COMMUNITY SERVICES WA INC	MEMBERSHIP SUBSCRIPTION 2012/2013	4,136.50
EFT24820	16/08/2012	AUSTRALIAN SUPERANNUATION	SUPERANNUATION CONTRIBUTIONS	731.45
EFT24821	16/08/2012	MADE 4 YOU (LYGIA)	PAYMENT TO CONSIGNMENT SUPPLIER FOR GOODS SOLD AT THE ZIG ZAG CULTURAL CENTRE - 01/07/12 - 31/07/12	16.80
EFT24822	16/08/2012	ANDREW FOWLER-TUTT	REIMBURSEMENT OF VARIOUS COSTS	86.00
EFT24823	16/08/2012	JAMES TRAIL	REIMBURSEMENT OF VARIOUS COSTS	35.00
EFT24824	16/08/2012	GRETA PAYNE	RATES REFUND	583.70
EFT24825	16/08/2012	ANNE TESCONI -THERMOMIX	KEY BOND REFUND	50.00
EFT24826	16/08/2012	PETER TUCATS SUPERANNUATION FUND	SUPERANNUATION CONTRIBUTIONS	229.73
EFT24827	16/08/2012	BINDALE SUPERANNUATION FUND	SUPERANNUATION CONTRIBUTIONS	62.49
EFT24828	16/08/2012	THE TYRE DOCTOR	PLANT / VEHICLE PARTS	2,211.00
EFT24829	16/08/2012	CHRIS ANTILL PLANNING & URBAN DESIGN CONSULTANT	PREPARATION OF SUBMISSION ON BEHALF OF THE SHIRE FOR PIA AWARDS 2012	4,650.00
EFT24830	16/08/2012	NEVERFAIL SPRINGWATER LTD (PETER ANDERTON CEN)	BOTTLED WATER SUPPLIES / MAINTENANCE	15.00
EFT24831	16/08/2012	SANDRA JANE FIELDS	HALL AND KEY BOND REFUND	350.00
EFT24832	16/08/2012	CONTRAFLOW	TRAFFIC MANAGEMENT FOR VARIOUS LOCATIONS	5,118.30
EFT24833	16/08/2012	PH CONCRETE	FOOTPATH MAINTENANCE / REPAIRS FOR VARIOUS LOCATIONS	6,699.33

Shire of Kalamunda				
Creditors Payments for the period 1 August to 27 August 2012				
Chq/EFT	Date	Name	Description	Amount
EFT24834	16/08/2012	UNIQCO (WA) PTY LTD	PLANT AND MANAGEMENT BUREAU SERVICE - JULY 2012	3,198.80
EFT24835	16/08/2012	KINDERMUSIK	KEY BOND PERMANENT USER - BOOKING CANCELLED	50.00
EFT24836	16/08/2012	JORGE'S CONTRACTING SERVICES	CLEANING SERVICES AT PETER ANDERTON CENTRE	2,412.85
EFT24837	16/08/2012	MI CONSTRUCTIONS WA PTY LTD	FOOTPATH DEPOSIT REFUNDS	4,200.00
EFT24838	16/08/2012	FONZ'S BOBCAT & TRUCK HIRE	PLANT EQUIPMENT AND OPERATOR HIRE FOR VARIOUS LOCATIONS	6,549.40
EFT24839	16/08/2012	ARMADILLO GROUP PTY LTD	PLANT / VEHICLE PARTS	8,027.80
EFT24840	16/08/2012	TEO PINTAUDI LAURAMY PTY LTD	CROSSOVER CONTRIBUTION	350.00
EFT24841	16/08/2012	VISION SUPER PTY LTD	SUPERANNUATION CONTRIBUTIONS	652.21
EFT24842	16/08/2012	WEST-SURE GROUP	CASH IN TRANSIT SERVICES	2,266.00
EFT24843	16/08/2012	VP'S FENCING & MAINTENANCE	HALL AND KEY BOND REFUND	550.00
EFT24844	16/08/2012	ARIA FLÖTTMANN	CROSSOVER BATTLEAXE BOND REFUND AND CROSSOVER CONTRIBUTION	5,037.50
EFT24845	16/08/2012	LANDMARK PRODUCTS LIMITED	DESIGN, ENGINEER, SUPPLY AND INSTALL 1 STANDARD K202 GOULBURN SHELTER AT WATTLE GROVE	14,091.00
EFT24846	16/08/2012	DAVID EVANS	KEY BOND REFUND	50.00
EFT24847	16/08/2012	JENNIFER DE YOUNG	VOLUNTEER TRANSPORT REIMBURSEMENT REFUND	1,571.20
EFT24848	16/08/2012	ANGELA CANCI	PODIATRY SERVICES AT JACK HEALEY SERVICES	608.68
EFT24849	16/08/2012	UNIQUE WASTE MANAGEMENT SERVICES	HIRE OF TRUCK AND OPERATOR TO TRANSPORT WASTE BINS	1,498.75
EFT24850	16/08/2012	PLACER MANAGEMENT GROUP	HIRE OF TEMPORARY STAFF FOR ADMIN	2,978.67
EFT24851	16/08/2012	VIEWDALE IT	ANNUAL SUBSCRIPTION FOR HOSTING OF ZZCC WEBSITE	220.00
EFT24852	16/08/2012	BIG SKY ENTERTAINMENT WA	ENTERTAINMENT - QUIT TARGA WEST RALLY - 17 AUGUST 2012	2,365.00
EFT24853	16/08/2012	WILD BY NATURE	ASSORTED MERCHANDISE FOR ZIG ZAG CULTURAL CENTRE	370.02

Shire of Kalamunda				
Creditors Payments for the period 1 August to 27 August 2012				
Chq/EFT	Date	Name	Description	Amount
EFT24854	16/08/2012	STRATEGEN ENVIRONMENTAL CONSULTANTS	FORRESTFIELD INDUSTRIAL AREA STAGE 3 - FAUNA SURVEY & PLANT ANALYSIS. PROFESSIONAL SERVICES - MOIRA AVE WATER MONITORING. HYDROLOGY ASSESSMENT STAGE 3, FORRESTFIELD INDUSTRIAL AREA. FORRESTFIELD INDUSTRIAL AREA STAGE 3 ENVIRONMENTAL REVIEW.	35,931.36
EFT24855	16/08/2012	CLAIRE O'NEILL - CLAIRE'S EMBROIDERY	PAYMENT TO CONSIGNMENT SUPPLIER FOR GOODS SOLD AT THE ZIG ZAG CULTURAL CENTRE - 01/07/12 - 31/07/12	106.40
EFT24856	16/08/2012	LINDA STONES	PAYMENT TO CONSIGNMENT SUPPLIER FOR GOODS SOLD AT THE ZIG ZAG CULTURAL CENTRE - 01/06/12 - 30/06/12 (TWO ITEMS MISSED) & 01/07/12 - 31/07/12	86.10
EFT24857	16/08/2012	LEWIS FAMILY TRUST	TELEPHONE / SECURITY LINE REPAIR WORK JACK HEALY CENTRE	99.00
EFT24858	16/08/2012	EYEZON PTY LTD	ADVERTISING - WHAT'S ON GUIDE - PERTH HILLS	898.00
EFT24859	16/08/2012	DIDEN HOUSE JEWELLERY	PAYMENT TO CONSIGNMENT SUPPLIER FOR GOODS SOLD AT THE ZIG ZAG CULTURAL CENTRE - 01/07/12 - 31/07/12	252.00
EFT24860	16/08/2012	MARY FORWARD	PAYMENT TO CONSIGNMENT SUPPLIER FOR GOODS SOLD AT THE ZIG ZAG CULTURAL CENTRE - 01/07/12 - 31/07/12	5.95
EFT24861	16/08/2012	ECO-ENVIRONMENTAL	HIRE AND DELIVERY OF YSI PROPLUS MULTI-PARAMETER METER FOR WATER QUALITY MONITORING	137.50
EFT24862	16/08/2012	FOXTEL	MONTHLY FEES - BUSINESS PACKAGE - HARTFIELD PARK	400.00
EFT24863	16/08/2012	JOSEPH HAPP	MORNING MUSIC PERFORMANCE	440.00
EFT24864	16/08/2012	HANS SCHWALB	PAYMENT TO CONSIGNMENT SUPPLIER FOR GOODS SOLD AT THE ZIG ZAG CULTURAL CENTRE - 01/07/12 - 31/07/12	14.00
EFT24865	16/08/2012	CATHOLIC SUPER	SUPERANNUATION CONTRIBUTIONS	187.60

Shire of Kalamunda				
Creditors Payments for the period 1 August to 27 August 2012				
Chq/EFT	Date	Name	Description	Amount
EFT24866	16/08/2012	JIM BAKER	PAYMENT TO CONSIGNMENT SUPPLIER FOR GOODS SOLD AT THE ZIG ZAG CULTURAL CENTRE - 01/07/12 - 31/07/12	17.50
EFT24867	16/08/2012	KIERAN INGRAM	PAYMENT TO CONSIGNMENT SUPPLIER FOR GOODS SOLD AT THE ZIG ZAG CULTURAL CENTRE - 01/07/12 - 31/07/12	9.07
EFT24868	16/08/2012	THE ARTFUL FLOW - FELICIA LOWE	PAYMENT TO CONSIGNMENT SUPPLIER FOR GOODS SOLD AT THE ZIG ZAG CULTURAL CENTRE - 01/07/12 - 31/07/12	31.50
EFT24869	16/08/2012	NATURE PLAY SOLUTIONS	COMMUNITY CONSULTATION FOR NATURE PLAYGROUND AND DESIGN AT WOODLUPINE LIVING STREAM PROJECT	16,060.00
EFT24870	16/08/2012	MPJ (WA) PTY LTD	SUPERANNUATION CONTRIBUTIONS	414.00
EFT24871	16/08/2012	PHILIP SWAIN CONSULTING	CONTRACT SERVICES ENVIRONMENTAL HEALTH	3,640.00
EFT24872	16/08/2012	STRONG FAMILIES	KEY BOND REFUND	100.00
EFT24873	16/08/2012	FULL OF BEANZ	JULY 2012 SCHOOL HOLIDAY PROGRAM - LESMURDIE LIBRARY	740.00
EFT24874	16/08/2012	WHELANS	LASER SCANNING OVER SCOTT RESERVE HIGH WYCOMBE	4,950.00
EFT24875	16/08/2012	KLEYWEG CONSULTING T/A KC TRAFFIC & TRANSPORT	SIDRA ANALYSIS AND ROAD SAFETY AUDIT FOR HALE ROAD & WOOLWORTHS ROAD, FORRESTFIELD	3,828.00
EFT24876	16/08/2012	MADDINGTON JUNIOR FOOTBALL CLUB INC	KIDSPORT FUNDING FOR VARIOUS PLAYERS	99.00
EFT24877	16/08/2012	LOUISA ILES	BODY BALANCE GROUP FITNESS CLASS - FOR HEALTHY LIFE CHALLENGE	43.68
EFT24878	16/08/2012	KERRY FRYERS	REIMBURSEMENT OF VARIOUS COSTS	95.96
EFT24879	16/08/2012	COMMITTEE FOR PERTH	ANNUAL LOCAL GOVERNMENT MEMBERSHIP JULY 12 - JUNE 13	6,050.00
EFT24880	16/08/2012	SAMANTHA BRAND	BOND REFUND FOR USE AT HIGH WYCOMBE RECREATION CENTRE	1,000.00
EFT24881	16/08/2012	STEPHEN RAWLINSON	REIMBURSEMENT OF VARIOUS COSTS	104.95

Shire of Kalamunda				
Creditors Payments for the period 1 August to 27 August 2012				
Chq/EFT	Date	Name	Description	Amount
EFT24882	16/08/2012	NICHOLAS TAYLOR	PAYMENT TO CONSIGNMENT SUPPLIER FOR GOODS SOLD AT THE ZIG ZAG CULTURAL CENTRE - 01/07/12 - 31/07/12	31.50
EFT24883	16/08/2012	SILK ON SILK	PAYMENT TO CONSIGNMENT SUPPLIER FOR GOODS SOLD AT THE ZIG ZAG CULTURAL CENTRE - 01/07/12 - 31/07/12	147.00
EFT24884	16/08/2012	TRACEY BRITTON	HALL AND KEY BOND REFUND	1,050.00
EFT24885	27/08/2012	CAPITAL RECYCLING / DEMOLITION	SUPPLY OF RECYCLED SAND	88.46
EFT24886	27/08/2012	PRITCHARD FRANCIS PTY LTD	CIVIL SERVICES CONSULTANCY FEES - 20 LOT SUBDIVISION AT CYGNET COURT.	27,500.00
EFT24887	27/08/2012	STYLECORP CORPORATE WEAR	SUPPLY OF UNIFORM FOR VARIOUS STAFF MEMBERS	2,304.94
EFT24888	27/08/2012	SALMAT MEDIAFORCE PTY LTD	DISTRIBUTION OF FLYERS FOR EVENTS WITHIN THE SHIRE	1,186.26
EFT24889	27/08/2012	YMCA OF PERTH INC	MANAGEMENT CONTRACT - KALAMUNDA WATER PARK DEFICIT FUNDING 11/12	186,963.65
EFT24890	27/08/2012	DOMINANT PROPERTY SERVICES	CLEANING SERVICES FOR VARIOUS SHIRE LOCATIONS	37,320.33
EFT24891	27/08/2012	IMAGE EMBROIDERY	SUPPLY OF UNIFORM FOR VARIOUS STAFF MEMBERS	552.64
EFT24892	27/08/2012	PFD FOOD SERVICES	KIOSK SUPPLIES FOR HARTFIELD PARK	114.25
EFT24893	27/08/2012	KONICA MINOLTA BUSINESS SOLUTIONS P/L	PHOTOCOPYING CHARGES / MAINTENANCE FEES	864.87
EFT24894	27/08/2012	WILEY AIR TRANSPORT SERVICES & HIGHLAND EXPRESS	COURIER SERVICES TO COUNCILLORS	792.00
EFT24895	27/08/2012	COUNTRYWIDE PUBLICATIONS	ZIG ZAG CULTURAL CENTRE ADVERT IN WA ACCOMMODATION AND TOURISM LISTING	600.00
EFT24896	27/08/2012	CAFE CORPORATE	COFFEE MACHINE SUPPLIES / MAINTENANCE	145.00
EFT24897	27/08/2012	REVIVE EMERGENCY MEDICAL TRAINING	FIRST AID SUPPLIES FOR HARTFIELD PARK RECREATION CENTRE	202.43
EFT24898	27/08/2012	VE GRAPHICS PTY LTD	BANNER UPDATE FOR VARIOUS EVENTS	88.00
EFT24899	27/08/2012	BIDVEST FOODSERVICE	GROCERIES FOR PETER ANDERTON CENTRE	1,268.28
EFT24900	27/08/2012	SEAMLESS (AUST) PTY LTD	1ST INSTALLMENT FOR SEAMLESS WEBSITE DEVELOPMENT	25,885.20
EFT24901	27/08/2012	ALLION LEGAL	GENERAL EMPLOYMENT SERVICES	132.96

Shire of Kalamunda

Creditors Payments for the period 1 August to 27 August 2012

Chq/EFT	Date	Name	Description	Amount
EFT24902	27/08/2012	BEAUREPAIRES FOR TYRES	PLANT / VEHICLE PARTS	206.60
EFT24903	27/08/2012	BUNNINGS BUILDING SUPPLIES	HARDWARE SUPPLIES FOR VARIOUS LOCATIONS	523.52
EFT24904	27/08/2012	CJD EQUIPMENT PTY LTD	PLANT / VEHICLE PARTS	224.73
EFT24905	27/08/2012	COVS PARTS PTY LTD	PLANT / VEHICLE PARTS	635.40
EFT24906	27/08/2012	CROMMELINS MACHINERY	PLANT / VEHICLE PARTS	484.00
EFT24907	27/08/2012	KALAMUNDA TOYOTA	PLANT / VEHICLE PARTS	2,715.68
EFT24908	27/08/2012	WA LOCAL GOVERNMENT ASSOCIATION	VARIOUS WALGA SUBSCRIPTION - ASSOCIATION MEMBERSHIP - 01/07/12 - 30/06/13. REGISTRATION FOR STAFF TO ATTEND WORKSHOP	53,045.34
EFT24909	27/08/2012	SESCO SECURITY CO	SECURITY MONITORING SERVICES FOR VARIOUS LOCATIONS	6,044.10
EFT24910	27/08/2012	SKIPPER TRUCKS PARTS	PLANT / VEHICLE PARTS	1,307.95
EFT24911	27/08/2012	STATE LIBRARY OF W.A.	LOST AND DAMAGED BOOKS	14.30
EFT24912	27/08/2012	ECHO NEWSPAPER	ADVERTISING FOR VARIOUS JOBS / EVENTS	1,400.00
EFT24913	27/08/2012	BUNZL LTD	CLEANING SUPPLIES	312.33
EFT24914	27/08/2012	EASTERN METROPOLITAN REGIONAL COUNCIL	DOMESTIC / WASTE CHARGES - RED HILL TIP	200,374.84
EFT24915	27/08/2012	BORAL CONSTRUCTION MATERIALS GROUP	ROAD MATERIALS FOR VARIOUS LOCATIONS	7,337.93
EFT24916	27/08/2012	OCE AUSTRALIA LIMITED	PHOTOCOPYING CHARGES	828.32
EFT24917	27/08/2012	EVERSAFE FIRE PROTECTION	FIRE PROTECTION WEAR / SUPPLIES	1,100.00
EFT24918	27/08/2012	STATEWIDE BEARINGS	PLANT / VEHICLE PARTS	40.66
EFT24919	27/08/2012	RAECO	STATIONERY / OFFICE SUPPLIES	285.28
EFT24920	27/08/2012	MCINTOSH & SON	PLANT / VEHICLE PARTS	635.15
EFT24921	27/08/2012	KINETIC HEALTH GROUP LTD	PREPLACEMENT MEDICALS / BASELINE HEARING TESTS	1,393.81
EFT24922	27/08/2012	CANON AUSTRALIA PTY LTD	PHOTOCOPYING CHARGES	9.99
EFT24923	27/08/2012	ALSCO LINEN SERVICE	LINEN HIRE / LAUNDRY SERVICES	1,569.10
EFT24924	27/08/2012	CLEAN CLOTH COTTON TRADERS	PROTECTIVE SUPPLIES	232.89
EFT24925	27/08/2012	LGIS INSURANCE BROKING SERVICES	MOTOR VEHICLE INSURANCE	2,480.24
EFT24926	27/08/2012	LGIS WORKCARE SCHEME	WORKERS COMPENSATION INSURANCE	198,330.84
EFT24927	27/08/2012	ACTIMED AUSTRALIA PTY LTD	MEDICAL SUPPLIES FOR PODIATRIST	3,274.80
EFT24928	27/08/2012	STONETRADERS PTY LTD	GARDEN / RESERVE SUPPLIES	588.00
EFT24929	27/08/2012	GRONBEK SECURITY	SECURITY KEY SERVICES TO VARIOUS SHIRE BUILDINGS	1,085.44

Shire of Kalamunda

Creditors Payments for the period 1 August to 27 August 2012

Chq/EFT	Date	Name	Description	Amount
EFT24930	27/08/2012	WESTBOOKS	LIBRARY SUPPLIES	210.33
EFT24931	27/08/2012	DORMA AUTOMATICS PTY LTD	DOOR MAINTENANCE TO VARIOUS SHIRE BUILDINGS	616.00
EFT24932	27/08/2012	WA LIMESTONE COMPANY	ROAD MATERIALS FOR VARIOUS LOCATIONS	3,192.35
EFT24933	27/08/2012	CORPORATE EXPRESS AUSTRALIA LTD	STATIONERY / OFFICE SUPPLIES	1,260.87
EFT24934	27/08/2012	FULTON HOGAN INDUSTRIES PTY LTD	ROAD MATERIALS FOR VARIOUS LOCATIONS	105,652.84
EFT24935	27/08/2012	IT VISION	RENEWAL OF SYNERGY SOFT & UNIVERSE ANNUAL LICENSE FEE	75,465.50
EFT24936	27/08/2012	GREEN SKILLS (ECOJOBS)	LABOUR ASSISTANCE FOR TREE PLANTING	954.80
EFT24937	27/08/2012	WESTCARE INDUSTRIES	LIBRARY SUPPLIES	44.29
EFT24938	27/08/2012	ONESTEEL DISTRIBUTION (MIDALIA STEEL)	PLANT / VEHICLE PARTS	298.98
EFT24939	27/08/2012	J BLACKWOOD & SON LIMITED	PROTECTIVE WEAR / SUPPLIES	2,642.28
EFT24940	27/08/2012	AIR LIQUIDE WA PTY LTD	GAS BOTTLE FACILITY FEE	107.05
EFT24941	27/08/2012	JR & A HERSEY PTY LTD	HARDWARE SUPPLIES	1,771.00
EFT24942	27/08/2012	ELLENBY TREE FARM	GARDEN / RESERVE SUPPLIES	1,661.00
EFT24943	27/08/2012	NORTON DISTRIBUTION PTY LTD	DRAINAGE SUPPLIES FOR VARIOUS LOCATIONS	1,123.56
EFT24944	27/08/2012	TOTAL PACKAGING (WA) PTY LTD	SUPPLY OF DOG LITTER BAGS	858.00
EFT24945	27/08/2012	AABEL LINE MARKING	LINE MARKING FOR VARIOUS LOCATIONS	1,770.48
EFT24946	27/08/2012	LOCAL GOVERNMENT MANAGERS AUSTRALIA (WA DIVISION)	2012/2013 MEMBERSHIP FOR VARIOUS STAFF MEMBERS	2,926.00
EFT24947	27/08/2012	ICON-SEPTECH	DRAINAGE SUPPLIES FOR VARIOUS LOCATIONS	447.24
EFT24948	27/08/2012	METROCOUNT	SURVEYING SUPPLIES	766.70
EFT24949	27/08/2012	AMEREX FIRE (WA) (E FIRE AND SAFETY)	FIRE EQUIPMENT MAINTENANCE FOR VARIOUS LOCATIONS	1,331.00
EFT24950	27/08/2012	B & J CATALANO PTY LTD	ROAD MATERIALS FOR VARIOUS LOCATIONS	10,429.22
EFT24951	27/08/2012	UHY HAINES NORTON	INTERIM AUDIT FEES	14,923.88
EFT24952	27/08/2012	LGIS PROPERTY	INSURANCE	89,706.41
EFT24953	27/08/2012	QUICK CORPORATE AUST PTY LTD	STATIONERY & OFFICE SUPPLIES	6,902.19
EFT24954	27/08/2012	COMMUNITY NEWSPAPER GROUP LTD	ADVERTISING FOR VARIOUS JOBS AND EVENTS	1,757.84
EFT24955	27/08/2012	WREN OIL	WASTE OIL FILTER RECYCLING CHARGES	121.00
EFT24956	27/08/2012	MUNDARING GARDEN CENTRE	GARDEN / RESERVE MAINTENANCE	95.04
EFT24957	27/08/2012	JAMES WALKER AUSTRALIA PTY LTD	PLANT / VEHICLE PARTS	95.70

Shire of Kalamunda				
Creditors Payments for the period 1 August to 27 August 2012				
Chq/EFT	Date	Name	Description	Amount
EFT24958	27/08/2012	LOCK, STOCK & FARRELL LOCKSMITH PTY LTD	PADLOCKS / KEYS SUPPLIES	1,299.00
EFT24959	27/08/2012	TOTAL COOLANT MANAGEMENT SOLUTIONS (AUSTRALIA)	PLANT/VEHICLE PARTS	643.50
EFT24960	27/08/2012	ALL EARTH GROUP PTY LTD	GREEN WASTE REMOVAL / WASTE RECYCLING CHARGES	4,067.77
EFT24961	27/08/2012	COCA-COLA AMATIL (AUST) PTY LTD	KIOSK SUPPLIES FOR HARTFIELD RECREATION CENTRE	647.01
EFT24962	27/08/2012	CONFECT - EXPRESS	KIOSK SUPPLIES FOR HARTFIELD RECREATION CENTRE	268.01
EFT24963	27/08/2012	G FORCE PRINTING	SUPPLY OF PRINTED STATIONERY STOCK	733.92
EFT24964	27/08/2012	DIRECT TRADES SUPPLY PTY LTD	HARDWARE SUPPLIES	2,182.85
EFT24965	27/08/2012	SPECIALISED SECURITY SHREDDING	SECURE DOCUMENT DISPOSAL BIN REMOVAL AND REPLACEMENT	55.00
EFT24966	27/08/2012	CUMMINS SOUTH PACIFIC PTY LTD	PLANT/VEHICLE PARTS	524.45
EFT24967	27/08/2012	AUSTREND INTERNATIONAL PTY LTD	ROAD SAFETY AND TRAFFIC CONTROL PRODUCTS	2,822.60
EFT24968	27/08/2012	M2 TECHNOLOGY	MESSAGING SERVICES FOR HARTFIELD PARK RECREATION CENTRE	389.99
EFT24969	27/08/2012	INSTITUTE OF PUBLIC WORKS ENGINEERING AUSTRALIA LTD (IPWEA LTD)	INTERNATIONAL INFRASTRUCTURE MANAGEMENT MANUAL	418.00
EFT24970	27/08/2012	INSIGHT CCS PTY LTD	AFTER HOURS ANSWERING SERVICES	2,403.56
EFT24971	27/08/2012	SNAP PRINTING - MIDLAND	PRINTING OF BUSINESS CARDS FOR VARIOUS STAFF	468.00
EFT24972	27/08/2012	WEBSITE WEED & PEST PTY LTD	WEED CONTROL AT VARIOUS LOCATIONS	4,620.00
EFT24973	27/08/2012	GOOD READING MAGAZINE	PROMOTIONAL COPIES OF GOOD READING MAGAZINE FOR NATIONAL YEAR OF READING	368.50
EFT24974	27/08/2012	RENT-A-DINGO	PLANT EQUIPMENT HIRE	1,375.00
EFT24975	27/08/2012	HUMES	DRAINAGE SUPPLIES FOR VARIOUS LOCATIONS	12,491.13
EFT24976	27/08/2012	BOYA EQUIPMENT PTY LTD	SUPPLY OF ONE NEW LOADER AND PLANT / VEHICLE PARTS	98,034.95
EFT24977	27/08/2012	RED 11 PTY LTD	COMPUTER SUPPLIES / ACCESSORIES	248.79
EFT24978	27/08/2012	ROAD SIGNS AUSTRALIA (ALLPACK SIGNS)	TRAFFIC PROTECTION PRODUCTS / SIGNAGE	1,002.10
EFT24979	27/08/2012	PIRTEK WELSHPOOL	PLANT / VEHICLE PARTS	534.54
EFT24980	27/08/2012	MULTILEC ENGINEERING	QUARTERLY SERVICING & TESTING OF ELEVATORS	313.50

Shire of Kalamunda				
Creditors Payments for the period 1 August to 27 August 2012				
Chq/EFT	Date	Name	Description	Amount
EFT24981	27/08/2012	HOLCIM AUSTRALIA PTY LTD	ROAD MATERIALS FOR VARIOUS LOCATIONS	2,296.27
EFT24982	27/08/2012	BURKEAIR	AIR-CONDITIONING REPAIRS / MAINTENANCE	479.05
EFT24983	27/08/2012	DRAINFLOW SERVICES PTY LTD	CLEANING / MAINTAINING STORM WATER DRAINS	25,656.40
EFT24984	27/08/2012	WEST COAST PROFILERS PTY LTD	PLANT EQUIPMENT HIRE	3,553.00
EFT24985	27/08/2012	LOCHNESS LANDSCAPE SERVICES	MOWING OF VARIOUS RESERVES	8,800.00
EFT24986	27/08/2012	DANTERR AGENCIES	PLANT / VEHICLE PARTS	1,375.00
EFT24987	27/08/2012	BOSTON MAINTENANCE SERVICES	PLANT / VEHICLE PARTS	371.91
EFT24988	27/08/2012	FUJI XEROX AUSTRALIA PTY LTD	PHOTOCOPYING CHARGES	6,336.10
EFT24989	27/08/2012	STARDATE PTY LTD	MAINTENANCE SERVICE ON THE PABX TELEPHONE SYSTEM	2,137.78
EFT24990	27/08/2012	ATTORNEY GENERAL'S DEPARTMENT	SAFER SUBURBS PLAN 2008 - REPAY UNSPENT FUNDS	19,361.58
EFT24991	27/08/2012	HARE & FORBES PTY LTD	PLANT / VEHICLE PARTS	57.80
EFT24992	27/08/2012	CAPTIVATE GLOBAL (DIGITAL MARKETING ATC MPH UNIT TRUST)	HALF YEARLY CHARGE - MESSAGES ON HOLD	1,313.40
EFT24993	27/08/2012	STRATEGEN ENVIRONMENTAL CONSULTANTS	CONSULTING SERVICES - WATER MONITORING AT MOIRA AVENUE. ENVIRONMENTAL ADVICE - LAND DEVELOPMENT . YORK ROAD RESERVE OPPORTUNITIES & CONSTRAINTS	4,431.19
EFT24994	27/08/2012	BAD BACKS STORE	SUPPLY OF OFFICE FURNITURE	389.00
EFT24995	27/08/2012	WESTBURY INVESTMENTS PTY LTD	PROPERTY DEVELOPMENT CONSULTANCY FEES	3,031.88
EFT24996	27/08/2012	AMCOR RECYCLING	WASTE CARDBOARD RECYCLING CHARGES	233.20
EFT24997	27/08/2012	SAFE T CARD MARKETING PTY LTD	MONTHLY INVOICE FOR SAFETY CARD UNIT FOR RANGERS	33.00
EFT24998	27/08/2012	ELECTRICAL TEST TAG & INSPECTION SERVICES (ETTIS)	ELECTRICAL TESTING & TAGGING AT PETER ANDERTON CENTRE	66.99
EFT24999	27/08/2012	MANDURAH PACKAGING	KITCHEN PRODUCTS INCLUDING CLEANING GOODS	534.55
EFT25000	27/08/2012	STONEHAM AND ASSOCIATES	HEALTH PLAN COMMUNITY CONSULTATION	5,087.50
EFT25001	27/08/2012	PUBLIC TRANSPORT AUTHORITY OF WA	BUS SHELTER GRANTS SCHEME CONTRIBUTION FOR SHELTERS AT VARIOUS LOCATIONS	21,024.96

Shire of Kalamunda				
Creditors Payments for the period 1 August to 27 August 2012				
Chq/EFT	Date	Name	Description	Amount
EFT25002	27/08/2012	FURNITURE OPTIONS	SUPPLY OF DUROFOLD RECTANGULAR FOLDING TABLES	2,196.48
EFT25003	27/08/2012	HOIST HYDRAULICS WA	PLANT / VEHICLE PARTS	895.40
EFT25004	27/08/2012	TRAFFIC SYSTEMS WEST	TO SUPPLY AND LAY TEXTURED RUBBER INFILL TO ISLAND EDNEY ROAD HIGH WYCOMBE	2,172.50
EFT25005	27/08/2012	EXECUTIVE MEDIA PTY LTD	FULL SIZE ADVERT IN CARAVANNING AUSTRALIA"	1,995.00
EFT25006	27/08/2012	MININGFM PTY LTD	SUPPLY 'MINING FAMILYS ROCK ' - BOOK	26.95
EFT25007	27/08/2012	ART GUIDE AUSTRALIA	ADVERTISING - ARTGUIDE PACKAGE - ZIG ZAG GALLERY	990.00
EFT25008	27/08/2012	PARCHEM CONSTRUCTION SUPPLIES	PLANT / VEHICLE PARTS	83.42
65985	02/08/2012	VERONICA MCCORMICK	PART DOG REGISTRATION FEE REFUND	57.00
65986	02/08/2012	IAN NORTH	KEY BOND REFUND	50.00
65987	02/08/2012	HOSPITAL BENEFIT FUND OF WA	PAYROLL DEDUCTIONS	388.55
65988	02/08/2012	AUSTRALIAN SERVICES UNION	PAYROLL DEDUCTIONS	206.10
65989	02/08/2012	MUNICIPAL EMPLOYEES UNION	PAYROLL DEDUCTIONS	368.60
65990	02/08/2012	TELSTRA CORPORATION	TELEPHONE EXPENSES	5,519.16
65991	02/08/2012	WATER CORPORATION	WATER EXPENSES	427.55
65992	02/08/2012	SYNERGY	POWER CHARGES	73,101.78
65993	02/08/2012	ALINTA ENERGY	GAS CHARGES	1,465.75
65994	02/08/2012	ZURICH INSURANCE	INSURANCE	1,000.00
65995	02/08/2012	MATTHEW & LEANNE SKEGGS	RATES REFUND	190.00
65996	02/08/2012	ARNOLD JURIS LEISKALNS	RATES REFUND	540.59
65997	02/08/2012	CASH - KALAMUNDA LIBRARY	PETTY CASH REIMBURSEMENT	129.70
65998	02/08/2012	CASH - FORRESTFIELD LIBRARY	PETTY CASH REIMBURSEMENT	144.76
65999	02/08/2012	CASH - HARTFIELD PARK	PETTY CASH REIMBURSEMENT	111.60
66000	02/08/2012	WESTSCHEME SUPERANNUATION	SUPERANNUATION CONTRIBUTIONS	667.19
66001	02/08/2012	REST SUPERANNUATION	SUPERANNUATION CONTRIBUTIONS	519.19
66002	02/08/2012	CITY OF NEDLANDS	REIMBURSEMENT OF LONG SERVICE LEAVE LIABILITY - ANDREW MELVILLE	4,101.52
66003	02/08/2012	AMP RETIREMENT SAVINGS ACCOUNT	SUPERANNUATION CONTRIBUTIONS	317.57
66004	02/08/2012	COGNET NOMINEES PTY LTD ACF MAP SUPER FUND	SUPERANNUATION CONTRIBUTIONS	78.27

Shire of Kalamunda				
Creditors Payments for the period 1 August to 27 August 2012				
Chq/EFT	Date	Name	Description	Amount
66005	02/08/2012	COLONIAL 1ST STATE SUPERANNUATION	SUPERANNUATION CONTRIBUTIONS	751.05
66006	02/08/2012	HESTA SUPER FUND	SUPERANNUATION CONTRIBUTIONS	873.22
66007	02/08/2012	AMPLIFE LIMITED	SUPERANNUATION CONTRIBUTIONS	82.91
66008	02/08/2012	MEDICAL & ASSOCIATED PROFESSIONALS SUPER FUND	SUPERANNUATION CONTRIBUTIONS	99.50
66009	02/08/2012	CASH - MEALS ON WHEELS	PETTY CASH REIMBURSEMENT	285.00
66010	02/08/2012	CASH - KALAMUNDA HACC	PETTY CASH REIMBURSEMENT	308.20
66011	02/08/2012	ANZ SUPER ADVANTAGE	SUPERANNUATION CONTRIBUTIONS	183.14
66012	02/08/2012	AMP SUPER LEADER	SUPERANNUATION CONTRIBUTIONS	108.10
66013	02/08/2012	ING INTEGRA PERSONAL SUPER	SUPERANNUATION CONTRIBUTIONS	98.85
66014	02/08/2012	UNISUPER	SUPERANNUATION CONTRIBUTIONS	237.43
66015	02/08/2012	HOSTPLUS PTY LTD	SUPERANNUATION CONTRIBUTIONS	186.80
66016	02/08/2012	AUSTRALIAN RETIREMENT FUND - ARF ADMINISTRATION	SUPERANNUATION CONTRIBUTIONS	92.09
66017	02/08/2012	COMMONWEALTH SUPERSELECT	SUPERANNUATION CONTRIBUTIONS	155.75
66018	02/08/2012	EATON ASSET MANAGEMENT	KEY BOND REFUND	50.00
66019	02/08/2012	CASH - ZIG ZAG CULTURAL CENTRE	PETTY CASH REIMBURSEMENT	82.30
66020	02/08/2012	MACQUARIE WRAP	SUPERANNUATION CONTRIBUTIONS	490.08
66021	02/08/2012	AXA	SUPERANNUATION CONTRIBUTIONS	12.54
66022	02/08/2012	QSUPER	SUPERANNUATION CONTRIBUTIONS	178.94
66023	06/08/2012	FINES ENFORCEMENT REGISTRY	FINES ENFORCEMENT REGISTRY	1,462.00
66024	16/08/2012	HOSPITAL BENEFIT FUND OF WA	PAYROLL DEDUCTIONS	388.55
66025	16/08/2012	AUSTRALIAN SERVICES UNION	PAYROLL DEDUCTIONS	206.10
66026	16/08/2012	MUNICIPAL EMPLOYEES UNION	PAYROLL DEDUCTIONS	368.60
66027	16/08/2012	TELSTRA CORPORATION	TELEPHONE EXPENSES	33,457.96
66028	16/08/2012	WATER CORPORATION	WATER EXPENSES	5,490.75
66029	16/08/2012	BCITF	LEVY FEE - JULY 2012	15,470.61
66030	16/08/2012	SYNERGY	POWER CHARGES	24.70
66031	16/08/2012	ALINTA ENERGY	GAS CHARGES	1,877.05
66032	16/08/2012	ZURICH INSURANCE	INSURANCE	500.00
66033	16/08/2012	DIRECTOR OF LICENSING SERVICES	NUMBER PLATES	330.00
66034	16/08/2012	BUILDING COMMISSION	BUILDING LEVY - JULY 2012	14,350.12

Shire of Kalamunda				
Creditors Payments for the period 1 August to 27 August 2012				
Chq/EFT	Date	Name	Description	Amount
66035	16/08/2012	CASH - ADMIN	PETTY CASH REIMBURSEMENT	544.99
66036	16/08/2012	KALMAR PTY LTD	PLANNING APPLICATION FEE REFUND	139.00
66037	16/08/2012	CASH - KALAMUNDA LIBRARY	PETTY CASH REIMBURSEMENT	107.45
66038	16/08/2012	CASH - FORRESTFIELD LIBRARY	PETTY CASH REIMBURSEMENT	123.05
66039	16/08/2012	CASH - HARTFIELD PARK	PETTY CASH REIMBURSEMENT	129.90
66040	16/08/2012	WESTSCHEME SUPERANNUATION	SUPERANNUATION CONTRIBUTIONS	813.68
66041	16/08/2012	REST SUPERANNUATION	SUPERANNUATION CONTRIBUTIONS	675.02
66042	16/08/2012	AMP RETIREMENT SAVINGS ACCOUNT	SUPERANNUATION CONTRIBUTIONS	168.72
66043	16/08/2012	COGNET NOMINEES PTY LTD ACF MAP SUPER FUND	SUPERANNUATION CONTRIBUTIONS	92.83
66044	16/08/2012	COLONIAL 1ST STATE SUPERANNUATION	SUPERANNUATION CONTRIBUTIONS	744.68
66045	16/08/2012	HESTA SUPER FUND	SUPERANNUATION CONTRIBUTIONS	786.45
66046	16/08/2012	AMPLIFE LIMITED	SUPERANNUATION CONTRIBUTIONS	71.06
66047	16/08/2012	CASH - MEALS ON WHEELS	PETTY CASH REIMBURSEMENT	315.00
66048	16/08/2012	CASH - KALAMUNDA HACC	PETTY CASH REIMBURSEMENT	576.90
66049	16/08/2012	ANZ SUPER ADVANTAGE	SUPERANNUATION CONTRIBUTIONS	188.14
66050	16/08/2012	AMP SUPER LEADER	SUPERANNUATION CONTRIBUTIONS	105.97
66051	16/08/2012	STEPHEN ECCLES	PLANNING APPLICATION FEE REFUND	104.00
66052	16/08/2012	ING INTEGRA PERSONAL SUPER	SUPERANNUATION CONTRIBUTIONS	47.65
66053	16/08/2012	UNISUPER	SUPERANNUATION CONTRIBUTIONS	237.43
66054	16/08/2012	HOSTPLUS PTY LTD	SUPERANNUATION CONTRIBUTIONS	342.41
66055	16/08/2012	AUSTRALIAN RETIREMENT FUND - ARF ADMINISTRATION	SUPERANNUATION CONTRIBUTIONS	120.43
66056	16/08/2012	COMMONWEALTH SUPERSELECT	SUPERANNUATION CONTRIBUTIONS	96.72
66057	16/08/2012	OFFICE OF ANDREW WADDELL MLA	KEY BOND REFUND	50.00
66058	16/08/2012	MACQUARIE WRAP	SUPERANNUATION CONTRIBUTIONS	490.08
66059	23/08/2012	TELSTRA CORPORATION	TELEPHONE EXPENSES	202.49
66060	27/08/2012	WATER CORPORATION	WATER EXPENSES	16,190.60
66061	27/08/2012	SYNERGY	POWER CHARGES	212,980.17
66062	27/08/2012	BGC CEMENT BAGGED PRODUCTS	SUPPLY PF ROAD MATERIALS	1,669.66
				2,928,637.09

Declaration of financial / conflict of interests to be recorded prior to dealing with each item.

69 Debtors and Creditors Reports for the Period Ended 31 July 2012

Previous Items	N/A
Responsible Officer	Director Corporate and Community Services
Service Area	Finance
File Reference	FI-CRS-002
Applicant	N/A
Owner	N/A
Attachment 1	Summary of Debtors for the period ended 31 July 2012
Attachment 2	Summary of Creditors for the period ended 31 July 2012

PURPOSE

1. To receive a monthly report on debtors and creditors.

BACKGROUND

2. Attached are the reports detailing aged Debtors (Attachment 1) and Creditors (Attachment 2) as at 31 July 2012.
3. Council has requested reports detailing outstanding debtors and creditors on a monthly basis.

DETAILS

Debtors

4.
 - Invoices over 30 days - the total of outstanding invoices in this category is greater than in previous months. The end of the financial year saw the generation of a number of invoices at the end of June which were still outstanding as of the 31st of July. A large proportion of these invoices, however, were paid in August as indicated on the summary of debtors report.
 - Invoices over 60 days – the majority of these invoices were paid in August.
 - Invoices over 90 days – three of the debtors in this category are making instalment payments.

Creditors

5.
 - Creditors Payments totalling \$3,085,557 were made during the month of July 2012. Standard payment terms are 30 days from the end of month, with local business and contractors on 14 day terms.
 - Invoices showing as outstanding greater than 60 and 90 days are the result of the original invoice documentation not being received by Finance.

- All contractors, trades and suppliers are advised of the Shire's preference to pay by Electronic Funds Transfer (EFT) for efficiency and cost savings.

STATUTORY AND LEGAL IMPLICATIONS

6. Nil.

POLICY IMPLICATIONS

7. Nil.

PUBLIC CONSULTATION/COMMUNICATION

8. Nil.

FINANCIAL IMPLICATIONS

9. Nil.

STRATEGIC AND SUSTAINABILITY IMPLICATIONS

Strategic Planning Implications

10. *Shire of Kalamunda Strategic Plan 2009 - 2014*
- | | | |
|----------|-------|--|
| Strategy | 5.5.2 | Provide financial services to support Council's operations and to meet sustainability planning, reporting and accountability requirements. |
|----------|-------|--|

Sustainability Implications

Social Implications

11. Nil.

Economic Implications

12. Nil.

Environmental Implications

13. Nil.

OFFICER COMMENT

14. Nil.

Voting Requirements: Simple Majority

COMMITTEE RECOMMENDATION TO COUNCIL (C&C 69/2012)

That Council:

1. Receives the outstanding debtors (Attachment 1) and creditors (Attachment 2) reports for the period ended 31 July 2012

Moved: **Cr Margaret Thomas**

Seconded: **Cr Justin Whitten**

Vote: **CARRIED UNANIMOUSLY (11/0)**

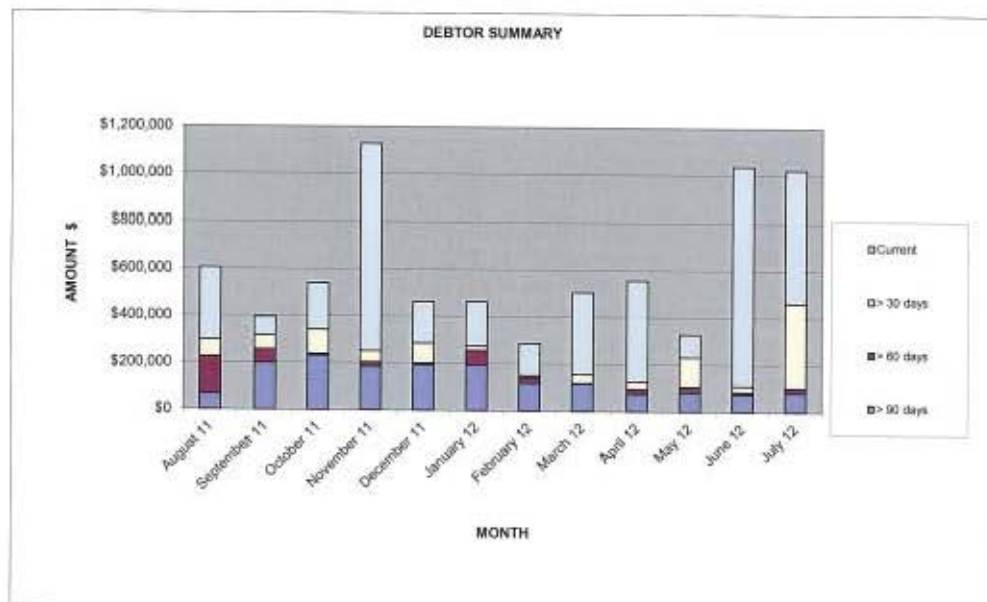
Attachment 1

SHIRE OF KALAMUNDA

SUMMARY OF DEBTORS FOR THE PERIOD ENDED 31st July 2012

Sundry Debtors Trial Balance - Summary Aged Listing

	> 90 days	> 60 days	> 30 days	Current	Total
August 11	\$66,879	\$158,452	\$71,317	\$308,646	\$605,294
September 11	\$199,732	\$55,952	\$60,892	\$78,677	\$395,253
October 11	\$231,146	\$7,092	\$103,306	\$198,708	\$540,252
November 11	\$185,429	\$18,416	\$47,902	\$876,748	\$1,128,494
December 11	\$193,276	\$7,267	\$85,461	\$177,004	\$463,009
January 12	\$194,871	\$60,408	\$20,509	\$187,062	\$462,850
February 12	\$117,987	\$23,893	\$7,811	\$137,709	\$287,400
March 12	\$116,824	\$1,930	\$37,629	\$349,595	\$505,977
April 12	\$73,797	\$19,947	\$32,462	\$430,258	\$556,464
May 12	\$81,227	\$23,488	\$127,331	\$96,775	\$328,820
June 12	\$74,201	\$9,487	\$25,123	\$927,493	\$1,036,304
July 12	\$81,218	\$19,540	\$361,204	\$560,352	\$1,022,313



SHIRE OF KALAMUNDA
SUMMARY OF DEBTORS
FOR THE PERIOD ENDED 31st July 2012

AMOUNT	DEBTOR	DETAILS	STATUS
New debt since aged >90 days			
>90 days			
\$13,342.86	Agostino Fazari	Private Works Costs - WP66	Clean Up & Repairs at Crystal Brook Road, Wattle Grove WA after Traffic Accident. Have been advised by family member that Mr Fazari is not currently contactable. A Confidential Report on the Debtor will be submitted to the Audit Committee.
\$3,916.01	Dome Coffees Australia	Legal Expenses for preparation of Lease	Director of Corporate and Community Development has received correspondence from Dome regarding this outstanding account.
\$16,296.57	Forrestfield United Soccer Club WA Inc. ^	Loan 214 Payment / Reserve Hire	Direct Debits in place. \$800 being paid every fortnight as per agreement
\$2,658.00	Hills District Calisthenic	Hall Hire - High Wycombe Recreation Centre	Paid 9 August.
\$1,500.00	Janus Entertainment		D&B have now served the Director on 29/4/2012. Order issued to proceed to judgement. Debtor has agreed to make monthly payments. First payment \$458.15 received 02 August
\$1,500.00	Jasmine Lee Frost ^	Supreme Court Costs	Direct Debit payment plan of \$50 per fortnight.
\$14,993.30	Kalamunda & Districts Netball Club	Outdoor Netball Court resurfacing project	Paid \$30,000 in March against an invoice of \$44,993. President has committed to pay the balance by the end of the season - September 20th 2012.
\$20,996.80	Main Roads WA	Road Speed Cushions	Paid 21 August
\$1,108.80	Steven John Mack	Private Works Costs - WP66	Private Works Costs - Road Guttering Railing Repairs. (WP66). Lodged debt with Dun & Bradstreet - 13/07/2011. Advised by D&B that Debtor is currently not contactable and may not be worth pursuing further. A Confidential Report on the Debtor will be submitted to Audit Committee.
\$1,981.75	WA Institute of Tae Kwan Do	Hall Hire - Agricultural Hall	Statement sent and messages left - awaiting response
\$2,923.64	90+ Days Debts consisting of amounts under \$1,000.00.		Balance represents total of accounts in debit and credit.

SHIRE OF KALAMUNDA
SUMMARY OF DEBTORS
FOR THE PERIOD ENDED 31st July 2012

AMOUNT	DEBTOR	DETAILS	STATUS
>60 days			
\$4,508.52	Foothills Netball Association	Loan 216	Paid 02 August
\$5,923.97	Forrestfield United Soccer Club WA Inc. ^		See Above
\$6,570.00	High Wycombe Amateur Football	Hire - Sports Reserve winter season	Paid 02 August
\$1,835.63	Zig Zag Café Kalamunda	Hire - Zig Zag June period	Paid 10 August
\$701.60	60+ Days Debts consisting of amounts under \$1,000.00.		Balance represents total of accounts in debit.
>30 days			
\$1,968.00	Delaney School of Irish Dancing	Hall Hire	Reminder invoice sent.
\$41,693.84	Dept of Culture and the Arts	Grant - renovation to Town Square Community Centre	Department contacted - invoice overlooked - to process
\$2,467.80	Dept of Education	Building Maintenance	Payment expected in due course
\$9,533.00	Forrestfield United Soccer Club WA Inc. ^		See Above
\$3,039.75	Hills District Calisthenic	Hall Hire - High Wycombe Recreation Centre	Reminder invoice sent.
\$2,045.00	Kalamunda Chamber of Commerce	Advertising - Harvest Festival	Reminder invoice sent.
\$1,333.33	Kalamunda Rangers Inc	Lease Fees - Norm Sadler Pavilion	Reminder invoices sent.
\$41,610.00	Leamurdie Tennis Club	Club contribution to extension	Reminder invoice sent.
\$2,185.75	WA Institute of Tae Kwan Do	Hall Hire - Agricultural Hall	See above
\$1,835.63	Zig Zag Café Kalamunda	Hire - Zig Zag Café	Reminder invoice sent.
\$245,075.20	Misc Debtors	Total of debtors over 30 days as of 31/07	Paid in August
\$8,416.30	30+ Days Debts consisting of amounts under \$1,000.00.		Balance represents total of accounts in debit and credit. Reminder invoices to be sent
Formal legal proceedings have been initiated against:			

FOOTNOTES

* Denotes currently in negotiation of invoice amount and details

^ Denotes payment arrangement in place

Attachment 2

SHIRE OF KALAMUNDA

SUMMARY OF CREDITORS FOR THE PERIOD ENDED 31 JULY 2012

Sundry Creditors Trial Balance - Summary Aged Listing

Month End	> 90 days	> 60 days	> 30 days	Current	Total
31/07/2012	\$1,129	\$2,418	\$829,279	\$1,240,322	\$2,073,148

Comment

- > 90 days Original Invoices for Eyezon Pty Ltd and Celebration Homes not received in Accounts to process
- > 60 days Original Invoices for Ventura Homes, Dale Alcock Homes, Forrestfield Newspapers & Magazines Delivery and Aff
- > 30 days These invoices are paid on the third fortnightly payment run.

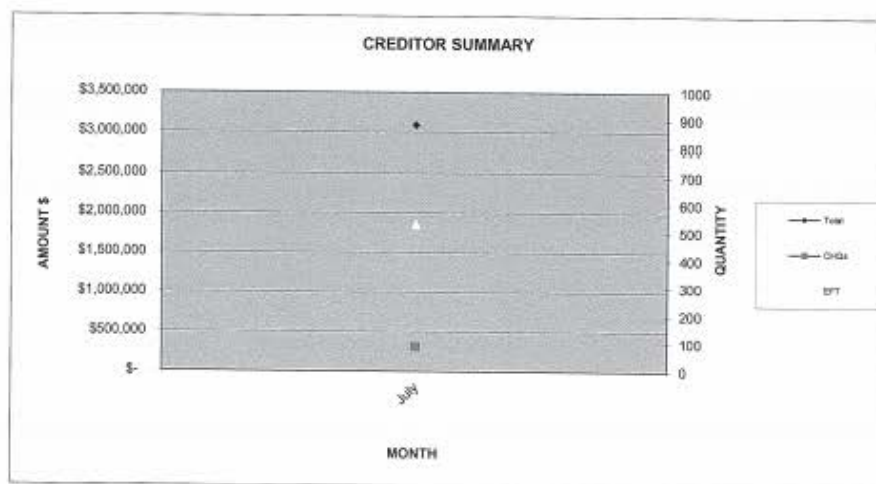
Creditor Payments made

Month	Amount \$	Quantity		
		Cheques	EFTs	Total
July	\$ 3,085,557	88	531	619

*Excludes net staff payroll

*Creditors on 30 day terms are paid on the 28th of the month following.

*Local suppliers are paid on 14 day terms.



Declaration of financial / conflict of interests to be recorded prior to dealing with each item.

70. CONFIDENTIAL ITEM - Future of Lesmurdie School Community Library – Outcome Following Public Comment Period

Reason for confidentiality

Local Government Act 1995: Section 5.23(2) (c), "A contract entered into, or which may be entered into by the local government and which relates to a matter to be discussed at the meeting."

Previous Items	OCM 47/2012
Responsible Officer	Director Corporate & Community Services
Service Area	Community Development
File Reference	RD-02/021
Applicant	N/A
Owner	Shire of Kalamunda Education Department
Attachment 1	Public Comment Table Summary
Attachment 2	Lesmurdie & Districts Community Association Inc Submission

This Report was considered at Item 14 of this Agenda.

Voting Requirements: Simple Majority

COMMITTEE RECOMMENDATION TO COUNCIL (C&C 70/2012)

That Council:

1. Notes the public comment feedback provided by residents of the Shire of Kalamunda.
2. Supports Option 2 and provide notice in writing to the Minister for Education of the intention to discontinue the License Agreement arrangement with the Lesmurdie School Community Library and affect the required twelve month period of notice.
3. Support the reallocation of any cost savings towards the services and resources within the Kalamunda Library.
4. Progress the valuation of the Lesmurdie School Community Library building (excluding land) by the Valuer-General and report results of the valuation back to Council.
5. Agrees the capital return from the Education Department (either partially or in full) may need to be directed toward required improvements at the Kalamunda Library to accommodate anticipated increased visitation.

Moved: **Cr Margaret Thomas**

Seconded: **Cr Bob Emery**

Vote: **For**

Cr Allan Morton
Cr Justin Whitten
Cr Bob Emery
Cr Donald McKechnie
Cr Margaret Thomas
Cr Noreen Townsend

Against

Cr John Giardina
Cr Frank Lindsey
Cr Geoff Stallard
Cr Dylan O'Connor
Cr Sue Bilich

CARRIED (6/5)

Declaration of financial / conflict of interests to be recorded prior to dealing with each item.

71. Community Sport and Recreation Facilities Fund – Annual and Forward Planning Grants Round 2012/2013

Previous Items	OCM 58/2012 and OCM 71/2012
Responsible Officer	Director Corporate and Community Development
Service Area	Corporate and Community Development
File Reference	FI-FAG-006
Applicant	N/A
Owner	N/A

Attachment 1 Assessment Matrix

PURPOSE

1. To consider supporting the two proposed applications received for funding through the Department of Sport and Recreation's ("DSR") Community Sport and Recreation Facilities Fund ("CSRFF") Annual and Forward Planning Grants Round Fund.

BACKGROUND

2. Through the CSRFF program, the State Government provides financial assistance to community groups and local government authorities to develop basic infrastructure for sport and recreation. The program aims to increase participation in sport and recreation with an emphasis on increasing physical activity through the provision of well-planned facilities.
3. In June 2012, Council received an update on the implementation of the Hartfield Park Masterplan and subsequently resolved the following:

To provide in-principle support for two projects to be submitted as part of the 2012/2013 Annual and Forward Planning Community Sport and Recreation Facilities Funding Round. These projects being:
 - Hartfield Park Alternative Water Source
 - Forrestfield Skate Park
4. In July 2012, Council received a further report on the Forrestfield skate park (OCM 71/2012) and resolved the following:

Pending approval from the Department of Environment and Conservation to remove bushland on the corner of Hale Road and Hartfield Road:
 - a. Supports an application to the Minister for Planning to utilise Cash-In-Lieu funding of \$220,000 for the development of a skate park in Forrestfield.
 - b. Submits for consideration within the 2013/2014 budget, \$46,667 towards the development of a skate park in Forrestfield.
 - c. Supports a Community Sport & Recreation Facilities Fund (CSRFF) application to the Department of Sport & Recreation seeking one third (\$133,333) of the total estimated cost (\$400,000) for the development of a skate park in Forrestfield.

5. The maximum grant available from DSR annual and forward planning grants program can be no greater than 1/3 of the total estimated project cost, with a total maximum project cost for the funding programs as follows:
 - Annual Grants - \$150,000 to \$500,000
 - Forward Planning Grants – Projects over \$500,001.
6. The Shire's role is to call for community applications and prioritise all applications received, both those derived internally and from the community.
7. The Shire did not receive any community funding application within this funding round.
8. All applications for this Annual and Forward Planning Grants round are to be received by the DSR by 30 September 2012 for assessment and applicants will be notified of the outcome in January 2013, with funds available in the 2013/2014 financial year.
9. As such, Council is now presented with two internal applications as part of the DSR's CSRFF 2012/2013 funding round.

DETAILS

Forrestfield Skate Park Project

10. The existing skate park in Forrestfield was built in 1997 and is located on Hale Road at Hartfield Park Reserve.
11. The skate park is not well located with limited opportunities for passive surveillance due to trees and fencing obstructing the line of sight between the Park and Hale Road. The overall condition of the skate park is poor with numerous occurrences of graffiti and vandalism at the site.
12. The proposed project is for the development of a new skate park at Hartfield Park Reserve on the corner of Hartfield Road and Hale Road.
13. The breakdown of the Forrestfield Skate park project is as follows:

	Contributions
CSRFF	\$133,000
Shire of Kalamunda	\$277,000
Total Project Cost	\$400,000

Foothills Future Waterproofing Strategy

14. The Hartfield Park Masterplan outlined the need to identify a sustainable long term alternative water source prior to any further development of additional playing field space being undertaken.
15. Within the 2012/2013 budget, Council allocated \$100,000 to undertake a feasibility study on the proposed Foothills Future Waterproofing Strategy.
16. The first stage of the study has since been completed, with a desktop feasibility study undertaken to determine the overall viability of the project and outline the proposed way forward.
17. The study indicated that the proposed project to obtain water from the Woodlupine main drain is viable, with further study into types of sand and infiltration methods to be required.
18. These additional studies are proposed to occur in the 2012/2013 financial year, with implementation of the project to occur in 2013/2014.
19. The breakdown of the Foothills Future Waterproofing Strategy project is as follows:

	Contributions
CSRFF	\$106,000
Shire of Kalamunda	\$214,000
Total Project Cost	\$320,000

STATUTORY AND LEGAL IMPLICATIONS

20. Nil.

POLICY IMPLICATIONS

21. Nil.

PUBLIC CONSULTATION/COMMUNICATION

22. A presentation on the Hartfield Park Masterplan was made by the Chief Executive Officer, Director Corporate & Community Services and the Manager Community Development at Hartfield Park Recreation Centre on 8 May 2012 to local politicians Alyssa Hayden MLC, Nathan Morton Liberal Candidate for Forrestfield, Department of Sport and Recreation's Director Facilities and Camps and the Ministerial Advisor from the Office of Minister for Sport and Recreation, Racing and Gaming.
23. Those in attendance indicated a significant level of interest and support for the redevelopment of the Hartfield Park Reserve. Of particular interest was the water harvesting project which was seen as very innovative by the Sport and Recreation, Racing and Gaming Director. The skate park proposal was also seen as a very important initiative for the Forrestfield community.

24. Notably the DSR encouraged the Shire of Kalamunda to seek funding opportunities through the CSRFF program.

FINANCIAL IMPLICATIONS

25. The Shire's contribution towards the proposed projects will be dependant on the outcome of the CSRFF applications and would need to be considered as part of the 2013/14 budget process.

STRATEGIC AND SUSTAINABILITY IMPLICATIONS

Strategic Planning Implications

26. *Shire of Kalamunda Strategic Plan 2009-2014:*
- | | |
|----------------|--|
| Outcome 1.3 | The community has access to a diverse range of recreational opportunities. |
| Outcome 2.3 | Long term viability of infrastructure and facilities. |
| Strategy 1.3.3 | Effective management of recreational open space requirements to maintain the feeling of a community and family friendly atmosphere. |
| Strategy 1.3.5 | Development of active & passive recreational facilities based on evidence supported evaluation and environmentally sustainable principles. |

Sustainability Implications

Social Implications

27. Nil.

Economic Implications

28. Nil.

Environmental Implications

29. The issue of water conservation has become increasingly prevalent in recent times. With increased pressure being placed on local governments to reduce their overall water usage and implement a number of water conservation strategies to effectively manage this issue.
30. The successful implementation of the Foothills Future Waterproofing Strategy, will provide the Shire with a long term sustainable water source, to ensure the long term sustainability in the Shire's capacity to water and maintain its active open spaces.

OFFICER COMMENT

31. The Department of Sport and Recreation requires all CSRFF applications to be assessed by each local government authority and provided with a ranking according to the local government's assessment.
32. A summary of each application in relation to the criteria and ranking is included at (Attachment 1). The following priority order has been identified:
1. Foothills Future Waterproofing Strategy
 2. Forrestfield Skate Park

Foothills Future Waterproofing Strategy

33. The implementation of the Foothills Future Waterproofing Strategy has been ranked as the first priority.
34. This is due to the increasing need outlined in Hartfield Park Masterplan to identify a sustainable long term alternative water source prior to any further development of additional playing field space being undertaken.
35. The Foothills Future Waterproofing Strategy scored higher due to its overall sustainability, financial justification and potential to increase physical activity through the provision of a sufficient amount of water to allow for the future development of additional playing fields.

Forrestfield Skate Park

36. The Forrestfield skate park has been ranked as the second priority due to the project's potential to increase physical activity through the provision of a new skate park/wheeled sports facility. The new facility will provide increased opportunities for BMX riders, skateboarders and scooter riders to participate in physical activity.

Voting Requirements: Simple Majority

COMMITTEE RECOMMENDATION TO COUNCIL (C&C 71/2012)

That Council:

1. Endorses the applications for the Department of Sport and Recreation's 2012/2013 Community Sport and Recreation Facilities Fund Forward Planning Grants Round in order of priority:
 1. Foothills Future Waterproofing Strategy
 2. Forrestfield Skate Park

Moved: **Cr Donald McKechnie**

Seconded: **Cr Margaret Thomas**

Vote: **CARRIED UNANIMOUSLY (11/0)**

Attachment 1

Club / Association Current Membership #	Project Outline	Project Costs (excl. GST)	Have applied previously	Is in line with Strategic Plan	Responsibility of future financial costs	Impact on project, if application is not supported	DSR Criteria (satisfactory (s), unsatisfactory (u), not relevant (n))										
							Project is justified	Potential to increase physical activity	Project is well planned	Community input	Management planning	Access and opportunity	Design	Financial viability	Coordination	Sustainability	Recommended Ranking
Foothills Future Waterproofing Project – Hartfield Park Alternative Water Source	Provide a sustainable long term alternative water source	Total Cost \$	No	Yes	Shire	Project will not proceed	s	n	s	s	s	n	s	s	s	s	1
		CSRFF Request \$															
		Shire contribution \$															
Forrestfield Skate Park	Development of a new skate park facility at Hartfield Park Reserve	Total Cost \$400,000	No	Yes	Shire	Project will not proceed	s	s	s	s	s	s	s	n	s	n	2
		CSRFF Request \$133,000															
		Shire contribution (POS funds \$220,000) \$47,000															

Declaration of financial / conflict of interests to be recorded prior to dealing with each item.

72. Community Garden Proposal at the Overflow Cottage, Lindsay Street, Kalamunda – Public Comment Period.

Previous Items	OCM 59/2012
Responsible Officer	Director Corporate & Community Services
Service Area	Community Development
File Reference	LN-08/008
Applicant	N/A
Owner	N/A
Attachment 1	Community Garden Site Map

PURPOSE

1. To consider the development of a community garden at the Overflow Cottage, Lindsay Street, Kalamunda with respect to outcomes of the recent public comment period.

BACKGROUND

2. Following a submission from Grow It Yourself ("GIY") Kalamunda (community group) proposing the development of a Kalamunda community garden and a consequent agenda item presented to the Ordinary Council Meeting of June 2012, the following was resolved:

"That Council:

1. *Provides in principle support to the establishment of a community garden at the Overflow Cottage, 8 Lindsay Street in Kalamunda, to the value of \$10,000, per year over two financial years subject to approval through the 2012/13 budget deliberation process.*
2. *Consult with residents of Lindsay Street and a suitable surrounding catchment so as to provide a public comment period for the proposed development.*
3. *Requests more extensive investigations and discussions to ensure Grow It Yourself Kalamunda has capacity to be self-sufficient beyond an initial two year period, with a relevant agreement put in place to reflect such a requirement.*
4. *Develop an agreement between the Shire of Kalamunda and Grow It Yourself Kalamunda that covers issues such as, but not limited to:*
 1. *The development of a business plan.*
 2. *A constitution for incorporation.*
 3. *Funding strategies.*
 4. *Agreement of costs to be borne by the group.*
 5. *A future lease or licence agreement.*
 6. *Insurance cover.*

3. In light of the Council resolution, a public comment period concluding 20 July 2012 has been undertaken with the residents of Lindsay Street and a surrounding catchment area.

DETAILS

4. The Shire received a submission from GIY Kalamunda proposing the development of a Kalamunda community garden in August 2011.
5. The purpose of the self-managed community garden is for the community to work together to learn how to sow, grow, harvest, store and cook food, protect the natural environment, conserve resources, lead a healthy and active lifestyle and network with other members of the community.
6. Following a review of a range of sites, the Overflow Cottage of 8 Lindsay Street, Kalamunda was supported in principle by Council as the proposed community garden site, inclusive of a need to consult with nearby residents to enable opportunity for public comment.
7. Three adjacent residents to the proposed community garden site of 8 Lindsay Street, provided a formal public comment response (Attachment 1).
- 6 Lindsay Street, Kalamunda
 - 10 Lindsay Street, Kalamunda
 - 11 Elizabeth Street, Kalamunda
8. More specific details of the formal public comment response from the three residents are highlighted in the "Public Consultation/Communication" component of the agenda item, however in summary the following key concerns were expressed:
- Residents level of privacy affected.
 - Driveway Access and Parking.
 - Operational Hours of the Community Garden.
9. The Shire has been implementing the Healthy Communities Program through a federal government grant and it is considered that the Community Garden initiative will provide an opportunity for the Shire to incorporate elements of the Healthy Communities program within the Community Garden initiative. It should be noted that the proposed Community Garden can provide the ongoing educational programs as well as a produce source to participants who want to continue their learning and development once the Healthy Communities project has ended in 2013. The Healthy Communities project can therefore contribute to the operational set up requirements of the proposed community garden, inclusive of boundary fencing.

STATUTORY AND LEGAL IMPLICATIONS

10. At this time, GIY Kalamunda is not incorporated therefore a formal lease agreement cannot be entered into. A Memorandum of Understanding will be established clearly stipulating the group's ongoing responsibility to meet all operational costs beyond the initial two years, inclusive of utilities, maintenance and relevant insurance.
11. Enquiries have been made on behalf of GIY Kalamunda with Local Government Insurance Brokers and consequent advice has been provided to the group. JLT Australia Insurance Brokers have been recommended as a suitable insurance broker with which to obtain their own public liability and relevant insurance arrangements. GIY Kalamunda will be required to have insurance in place prior to formal use of the site.

POLICY IMPLICATIONS

12. Nil.

PUBLIC CONSULTATION/COMMUNICATION

13. Consultation was undertaken with nearby residents of the Overflow Cottage on 8 Lindsay Street via the provision of a letter, inviting public comment.
14. Three adjacent residents as per below to the proposed community garden site of 8 Lindsay Street, provided a formal public comment response (Attachment 1).
 - 6 Lindsay Street, Kalamunda
 - 10 Lindsay Street, Kalamunda
 - 11 Elizabeth Street, Kalamunda
15. The residents of 6 Lindsay Street, expressed the following:

"We are delighted with this idea and hope it will be successful. We do have some reservations about the following and would like these matters to be addressed before we give our entire approval.

Assuming access will be down the driveway on the right of the house we feel that our main bedroom and entertaining area will be overlooked.

Plantings we have there are deciduous and provide no screening in winter.

We would need more information on the hours that the garden will be used.

We also need information on how the parking of vehicles will be managed. There could be a great amount of dust and noise unless access is limited down the drive and cars parked at the front.

Other than these concerns, we feel it would be a good utilisation of land and feel that the community could greatly benefit."
16. The resident of 10 Lindsay Street has a significant link (ancestry) to the 8 Lindsay Street site as a direct descendent – Great Grandson of Frederick Stirk and was the last owner of 8 Lindsay Street prior to the sale to the Shire. The resident confirmed the following by email:

"Providing the activity is undertaken during the day I have no objection to the prospect of a community garden. I have no concerns as such in relation to privacy, but suggested that some natural tree barriers could be planted, mainly in respect to the line of sight of my outdoor patio/entertainment area.

Perhaps it would be ideal to organise the planting of some screening trees such as wattles that are native bird friendly sooner than later, as it will take time for these plantings to become large enough to effectively attract bird like or screen our patio to some degree."

17. The residents of 11 Elizabeth Street, expressed the following:

"For the record, we would like to object to the placement of a community garden here. We think the project has merit, but as it would make public space available at the front (Stirk Park) and at the back of our property we would feel highly exposed. The placement of the garden here would cause us major privacy and security issues. We feel that even if the Council were to construct a more secure and private fence, human nature dictates that people would still feel the need to "have a peak" into our garden and pool area.

We are suggesting that the community garden be trialled at Headingly House, which is also a community owned space, has better available parking, room for expansion if the project is successful and little privacy issues."

Note: Headingly House was previously ruled out amongst a range of alternative sites detailed in the initial Council Report relative to the Community Garden proposal.

18. Following receipt of the three formal public comment submissions from adjacent residents, Officers endeavoured to follow up, clarify and reaffirm the comments which included an individual site meeting with the residents of 11 Elizabeth Street, Kalamunda on Friday 3 August 2012. The residents reiterated their stance opposed to the community garden development and also against the prospect of a Colorbond style fence.
19. The Shire continues to consult directly with the GIY Kalamunda representatives and will continue to do so, based on the outcomes of the proposed Community Garden at 8 Lindsay Street, Kalamunda.

FINANCIAL IMPLICATIONS

20. It is proposed that the Shire initially provides financial assistance of \$10,000 per year for the first two years as a means of providing initial seed funding to assist with the establishment of the garden and contribute towards operational costs, including items such as soil, garden bed structures, reticulation, pruning, seeding, water consumption, insurance and general maintenance.
21. Given the concerns expressed by neighbouring residents during the public comment period, if deemed as acceptable solutions, fencing and appropriate vegetation screening will be incorporated into the \$10,000 per year for the first two years budget processes.

22. GIY Kalamunda are currently progressing the budgetary process for the first two years, inclusive of identifying savings through community and business partnerships to maximise available budget and meet all set up costs.
23. In applying an allotment model, similar to that of the City of Stirling Community Gardens, it is envisaged the Community Garden will be self-sufficient in meeting ongoing operational and maintenance costs once properly established. A Memorandum of Understanding or formal licence agreement will be developed as a means to clearly stipulate the operational expense obligations based on a self-sufficient management model.

STRATEGIC AND SUSTAINABILITY IMPLICATIONS

Strategic Planning Implications

24. *Shire of Kalamunda Strategic Plan 2009-2014*
Strategy 1.3.4 Develop active and passive recreational facilities based on environmentally sustainable principles.

Sustainability Implications

Social Implications

25. The Community Garden would provide a social interaction opportunity for interested members of the community.
26. The Kalamunda Men's Shed and Kalamunda & District Historical Society are examples of groups that are interested in the proposal and can be engaged.

Economic Implications

27. Nil.

Environmental Implications

28. The concept of the Community Garden is to grow organic produce through nurturing the environment.

OFFICER COMMENT

29. The Community Garden proposal remains sound, providing benefits to the community and a unique use for the 8 Lindsay Street property which currently lays idle. A Community Garden will provide a level of security to the historic property.
30. Following notional support for the proposed Community Garden to be located at the Overflow Cottage site of 8 Lindsay Street, Kalamunda, residents have been given the opportunity to provide public comment before any final decision is made by Council.
31. Three adjacent residents have provided feedback with only residents located at 11 Elizabeth Street and 6 Lindsay Street raising concern relative to their privacy and security.

32. These concerns could be addressed through the provision of an appropriate 2m fence and/or vegetation screening at designated areas.
33. The Residential Design Codes stipulate that overlooking from unenclosed outdoor areas is only possible when they are more than 0.5m above natural ground level.
34. As the communal garden will not be raised more than 0.5m above the natural ground level, overlooking will not be an issue.
35. Despite visual privacy not being an issue, if Council approves the proposal, either solid fencing can be installed or additional landscaping could be planted along the boundary. The Residential Design Codes stipulate that the use of solid fencing and/or landscaping will address visual privacy.
36. The Shire's Fencing Local Law stipulates that a 1.8m high Colorbond fence is deemed to be a sufficient fence for a residential property.
37. The resident of 11 Elizabeth Street, Kalamunda has indicated that the objection to a community garden is maintained, even with the inclusion of a fence.
38. It should also be noted that the resident of 11 Elizabeth Street, has indicated that they had approached the Shire in the past and again in their recent submission to purchase the land at the back of 8 Lindsay Street. As the property is about to be rezoned as a community reserve, with the intention of retaining it as a community site.
39. In relation to the additional issues put forward by the 6 Lindsay Street, Kalamunda resident, relative to driveway access and hours of operation. These matters will be addressed as part of the agreement, with members being encouraged to park within the property, in front of the house and through daylight operational hours.
40. Consequently, given the proposed access arrangements, minimal issues are anticipated relative to operational hours and driveway access, however any issues arising can be addressed on a needs basis.

Mr Rob and Mrs Cath Cox of 11 Elizabeth Street spoke on this Report and indicated their dissatisfaction with some aspects of this report.

Voting Requirements: Simple Majority

COMMITTEE RECOMMENDATION TO COUNCIL (C&C 72/2012)

That Council:

1. Receives the public comment feedback provided by adjacent neighbourhood residents of the 8 Lindsay Street, Kalamunda property.

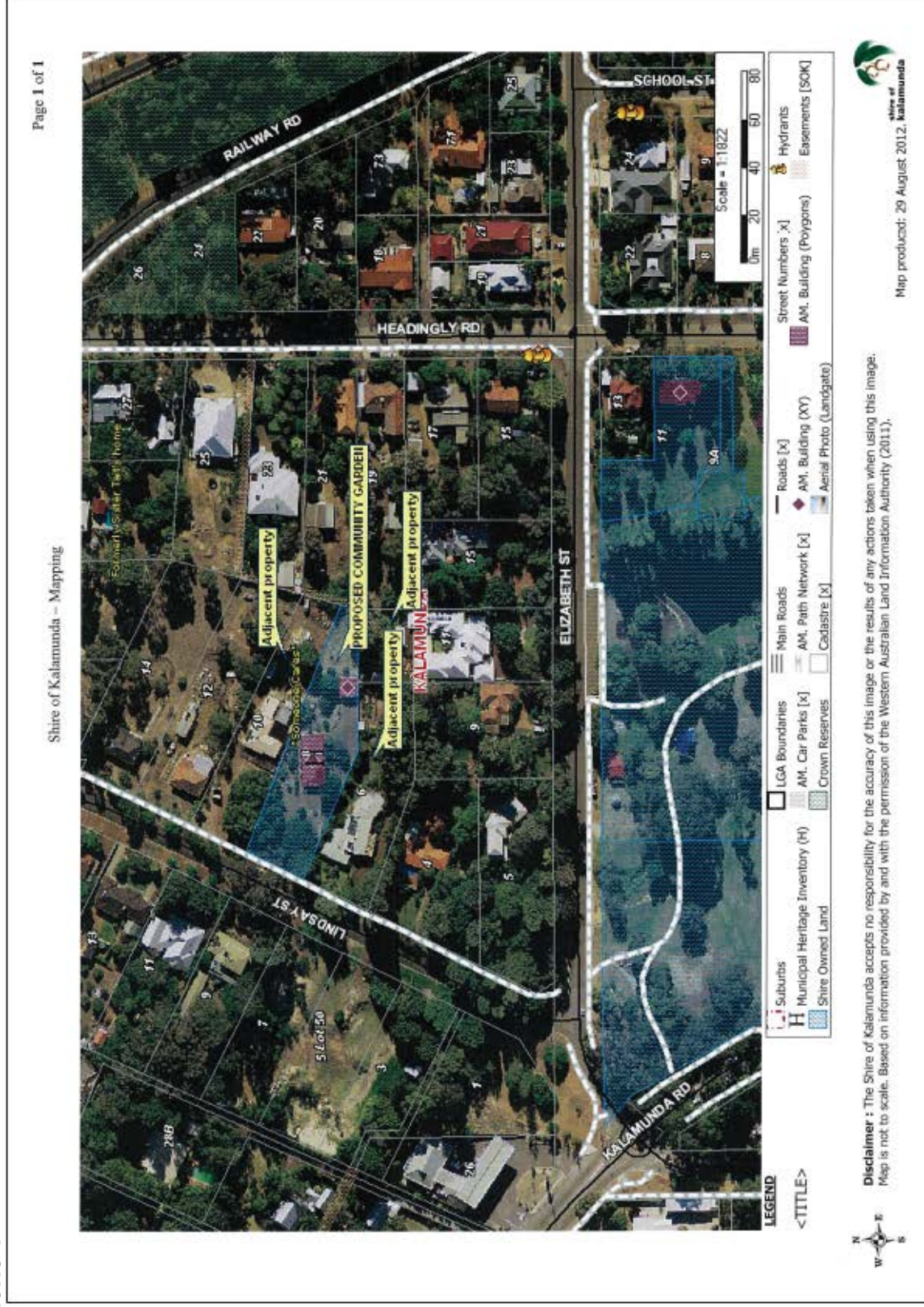
2. Maintains support and funding of \$10,000 per year over a two year period for the establishment of a community garden at the Overflow Cottage, 8 Lindsay Street, Kalamunda.
3. Advises the three neighbouring residents of Council's decision to establish the community garden at the Overflow Cottage, 8 Lindsay Street, Kalamunda, inclusive of the intent to provide appropriate fencing and vegetation screening on designated boundary lines.
4. Develops an agreement between the Shire of Kalamunda and GIY Kalamunda that encompasses such issues as a business plan with set up costs, inclusive of fencing, ongoing funding strategies, insurance and intent towards becoming an incorporated body.

Moved: **Cr John Giardina**

Seconded: **Cr Donald McKechnie**

Vote: **CARRIED UNANIMOUSLY (11/0)**

Attachment 1



10.0 MOTIONS OF WHICH PREVIOUS NOTICE HAS BEEN GIVEN

10.1 Nil.

11.0 QUESTIONS BY MEMBERS WITHOUT NOTICE

11.1 Nil.

12.0 QUESTIONS BY MEMBERS OF WHICH DUE NOTICE HAS BEEN GIVEN

12.1 Nil.

13.0 URGENT BUSINESS APPROVED BY THE PERSON PRESIDING OR BY DECISION

13.1 Nil.

14.0 MEETING CLOSED TO THE PUBLIC

14.1 MOTION

1. That the meeting be closed to the public to consider Report 70, Future of Lesmurdie School Community Library – Outcome Following Public Comment Period.

Moved: **Cr Justin Whitten**

Seconded: **Cr Allan Morton**

Vote: **CARRIED UNANIMOUSLY (11/0)**

14.2 *The meeting closed to the public at 6.47pm.*

14.3 **Future of Lesmurdie School Community Library – Outcome Following Public Comment Period**

Voting Requirements: Simple Majority

COMMITTEE RECOMMENDATION TO COUNCIL (C&C 70/2012)

That Council:

1. Notes the public comment feedback provided by residents of the Shire of Kalamunda.
2. Supports Option 2 and provide notice in writing to the Minister for Education of the intention to discontinue the License Agreement arrangement with the Lesmurdie School Community Library and affect the required twelve month period of notice.

3. Support the reallocation of any cost savings towards the services and resources within the Kalamunda Library.
4. Progress the valuation of the Lesmurdie School Community Library building (excluding land) by the Valuer-General and report results of the valuation back to Council.
5. Agrees the capital return from the Education Department (either partially or in full) may need to be directed toward required improvements at the Kalamunda Library to accommodate anticipated increased visitation.

Moved: **Cr Margaret Thomas**

Seconded: **Cr Bob Emery**

Vote: **For**

Cr Allan Morton
Cr Justin Whitten
Cr Bob Emery
Cr Donald McKechnie
Cr Margaret Thomas
Cr Noreen Townsend

Against

Cr John Giardina
Cr Frank Lindsey
Cr Geoff Stallard
Cr Dylan O'Connor
Cr Sue Bilich

CARRIED (6/5)

14.4 **MOTION**

1. That the meeting reopen to the public after considering Report 70, Future of Lesmurdie School Community Library – Outcome Following Public Comment Period.

Moved: **Cr Justin Whitten**

Seconded: **Cr Allan Morton**

Vote: **CARRIED UNANIMOUSLY (11/0)**

14.5 *The meeting reopened at 7.04pm, the Deputy Chairman read the Resolution passed behind closed doors to the meeting.*

15.0 CLOSURE

15.1 There being no further business the Chairman declared the meeting closed at 7.05pm.

I confirm these Minutes to be a true and accurate record of the proceedings of this Council.

Signed: _____
Chairman

Dated this _____ day of _____ 2012