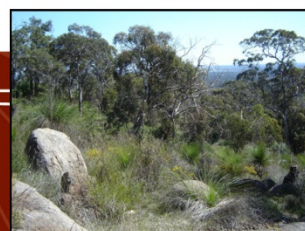


Corporate & Community Services Committee Meeting

Minutes for Monday 16 June 2014

UNCONFIRMED



**shire of
kalamunda**

INDEX

1.0	OFFICIAL OPENING.....	3
2.0	ATTENDANCE, APOLOGIES AND LEAVE OF ABSENCE PREVIOUSLY APPROVED	3
3.0	PUBLIC QUESTION TIME	4
4.0	PETITIONS/DEPUTATIONS	4
5.0	CONFIRMATION OF MINUTES OF PREVIOUS MEETING	4
6.0	ANNOUNCEMENTS BY THE PRESIDING MEMBER WITHOUT DISCUSSION	4
7.0	MATTERS FOR WHICH MEETING MAY BE CLOSED	4
8.0	DISCLOSURE OF INTERESTS.....	4
9.0	REPORTS TO COUNCIL	5
	19. DEBTORS AND CREDITORS REPORT FOR THE PERIOD ENDED 31 MAY 2014	6
	20. RATES DEBTORS REPORT FOR THE PERIOD ENDED 31 MAY 2014	50
	21. DISABILITY ACCESS AND INCLUSION POLICY STATEMENT AND DISABILITY ACCESS AND INCLUSION PLAN	55
10.0	MOTIONS OF WHICH PREVIOUS NOTICE HAS BEEN GIVEN	82
11.0	QUESTIONS BY MEMBERS WITHOUT NOTICE	82
12.0	QUESTIONS BY MEMBERS OF WHICH DUE NOTICE HAS BEEN GIVEN	82
13.0	URGENT BUSINESS APPROVED BY THE PRESIDING MEMBER OR BY DECISION.....	82
14.0	MEETING CLOSED TO THE PUBLIC	82
15.0	CLOSURE	82

MINUTES

1.0 OFFICIAL OPENING

The Presiding Member opened the meeting at 6.30pm, and welcomed Councillors and Staff.

2.0 ATTENDANCE, APOLOGIES AND LEAVE OF ABSENCE PREVIOUSLY APPROVED

2.1 Attendance

Councillors

Margaret Thomas JP	North Ward
Simon Di Rosso	(from 6.32pm) North Ward
Allan Morton	South West Ward
Noreen Townsend	(Presiding Member) South West Ward
Justin Whitten	South West Ward
Geoff Stallard	South East Ward
John Giardina	South East Ward
Frank Lindsey	South East Ward
Andrew Waddell JP	North West Ward
Dylan O'Connor	North West Ward
Bob Emery	North West Ward

Members of Staff

Warwick Carter	Director Development Services
Charles Sullivan	Director Infrastructure Services
Gary Ticehurst	Director Corporate Services
Darrell Forrest	Manager Governance
Darren Jones	Manager Community Development
Nicole O'Neill	Public Relations Coordinator
Meri Comber	Governance Officer

Members of the Public Nil

Members of the Press Nil

2.2 Apologies

Councillors

Sue Bilich	(Shire President) North Ward
------------	------------------------------

Members of Staff

Rhonda Hardy	Chief Executive Officer
--------------	-------------------------

2.3 Leave of Absence Previously Approved Nil

3.0 PUBLIC QUESTION TIME

A period of not less than 15 minutes is provided to allow questions from the gallery on matters relating to the functions of this Committee. For the purposes of Minuting, these questions and answers are summarised.

3.1 Nil.

4.0 PETITIONS/DEPUTATIONS

4.1 Nil.

5.0 CONFIRMATION OF MINUTES OF PREVIOUS MEETING

5.1 That the Minutes of the Corporate & Community Services Committee Meeting held on 19 May 2014, as published and circulated, are confirmed as a true and accurate record of the proceedings.

Moved: **Cr Dylan O'Connor**

Seconded: **Cr Justin Whitten**

Vote: **CARRIED UNANIMOUSLY (10/0)**

Cr Simon Di Rosso arrived immediately after the vote was taken.

6.0 ANNOUNCEMENTS BY THE PRESIDING MEMBER WITHOUT DISCUSSION

6.1 Nil.

7.0 MATTERS FOR WHICH MEETING MAY BE CLOSED

7.1 Nil.

8.0 DISCLOSURE OF INTERESTS

8.1 Disclosure of Financial and Proximity Interests

- a. Members must disclose the nature of their interest in matters to be discussed at the meeting. (Section 5.65 of the *Local Government Act 1995*.)
- b. Employees must disclose the nature of their interest in reports or advice when giving the report or advice to the meeting. (Section 5.70 of the *Local Government Act 1995*.)

8.1.1 Nil.

8.2 Disclosure of Interest Affecting Impartiality

- a. Members and staff must disclose their interest in matters to be discussed at the meeting in respect of which the member or employee had given or will give advice.

8.2.1 Nil.

9.0 REPORTS TO COUNCIL

Please Note: declaration of financial/conflict of interests to be recorded prior to dealing with each item.

Declaration of financial / conflict of interests to be recorded prior to dealing with each item.

19. Debtors and Creditors Report for the Period Ended 31 May 2014

Previous Items	N/A
Responsible Officer	Director Corporate Services
Service Area	Finance
File Reference	FI-CRS-002
Applicant	N/A
Owner	N/A

Attachment 1	Creditors Payment Listing for the month of May 2014
Attachment 2	Summary of Debtors for the month of May 2014
Attachment 3	Summary of Creditors for the month of May 2014

PURPOSE

1. To receive the monthly report on creditors payment listings for the month of May 2014 (Attachment 1).
2. To receive the monthly report on debtors and creditors (Attachments 2 and 3).

BACKGROUND

3. Council has requested reports detailing outstanding debtors and creditors on a monthly basis.

DETAILS

4. Invoices over 30 days total \$46,507.04, debts of significance are:
 - Chamber of Commerce \$6,510.00 – annual rent/membership – to follow up and determine if they would prefer to have a direct debit arrangement;
 - Kalamunda Cricket Club \$1,751.09 – operational expenses, have asked for extension due to financial constraints;
 - Kalamunda & Districts Rugby League \$2,310.00 – utilities/annual hire – have asked for an extension but since paid partially; and
 - Zig Zag Café \$5,179.46 – lease/operational expenses, has paid \$4,600 in May.
5. Invoices over 60 days total \$698,845.02, debts of significance are:
 - Design Management Group \$693,689.21 – developer contribution, committed to pay at end of May but this hasn't come through, being followed up;
 - Kalamunda Cricket Club \$1,151.76 – operational expenses; and
 - Zig Zag Café \$1,835.63 – lease/operational expenses.

6. Invoices over 90 days total \$34,153.62, debts of significance are:
- Forrestfield United Soccer Club \$4,123.97 – loan, \$600 Direct Debit arrangement in place;
 - Kalamunda Cricket Club \$1,751.09 – operational expenses;
 - Lesmurdie Tennis Club \$24,000 – contribution to extension, legal opinion sought; and
 - Western Power \$2,791.07 – private works, debt being pursued.

Creditors

7. Payments totalling \$3,402,145.33 were made during the month of May 2014. Standard payment terms are 30 days from the end of the month, with local businesses and contractors on 14 day terms.
8. Significant Municipal payments made in the month were:

Supplier	Purpose	\$
Australian Tax Office	PAYG payments	343,005.65
Enviro Sweep	Footpath/Carpark sweeping various locations	59,581.51
Eastern Metropolitan Regional Council	Domestic/Waste Charges and disposal fees	297,430.28
Fulton Hogan	Road infrastructure – various locations	363,721.88
Perth Waste Pty Ltd	Weekly collection and disposal of waste services	269,730.31
Laneway Construction	Bill Shaw reserve – public toilets – 2 nd progress payment	42,129.12
McKay Earthmoving	Provision of plant hire and operators – various locations	50,355.89
Redline (WA) Pty Ltd	Construction of sewer main – Abernethy Rd	216,614.52
Synergy	Power charges	164,756.60
Total Eden Pty Ltd	Progress payment – Installation of new reticulation at Davies Park, Maida Vale	49,127.10
WA Hino Sales and Service	Supply of two new vehicles for depot	115,868.30
WA Local Government Superannuation Plan	Superannuation contributions	183,090.88
YMCA of Perth Inc.	YMCA management fees – Oct to Dec 2013 – Kalamunda Waterpark	65,697.50

9. These payments total \$2,221,109.54 and represent 65.2% of all payments for the month.

Trust Account Payments

10. The Trust Accounts maintained by the Shire relate to the following types:

- CELL 9 Trust
- POS Trust
- BCITF Levy
- Building Licence Levy
- Unclaimed Monies

11. The following payments were made from the Trust Accounts in the month of May 2014.

Cell 9 Trust		Amount (\$)
Date	Description	
1/5/2014	McLeods – Acquisition of a portion of 29 Hale Rd, Wattle Grove	347.83
18/5/2014	Shire of Kalamunda – Project Management Fees – April 2014	2,998.93
2/5/2014	Building & Construction Industry Fund Levy	27,441.79
Forrestfield Industrial Area		Amount (\$)
Date	Description	
22/5/2014	Cable Locates & Consulting – location services	8,507.65
27/5/2014	Shire of Kalamunda – Project Management Fees – April 2014	666.93

STATUTORY AND LEGAL CONSIDERATIONS

12. In accordance with the requirements of the *Local Government (Financial Management) Regulations 1996 (Regulation 13)* a list of accounts paid by the Chief Executive Officer is to be prepared each month and presented in the manner required as per the Regulation.

POLICY CONSIDERATIONS

13. Nil.

COMMUNITY ENGAGEMENT REQUIREMENTS

14. Nil.

FINANCIAL CONSIDERATIONS

15. Nil.

STRATEGIC COMMUNITY PLAN

Strategic Planning Alignment

16. *Kalamunda Advancing: Strategic Community Plan to 2023*

OBJECTIVE 6.8 - To ensure financial sustainability through the implementation of effective financial management, systems and plans.

Strategy 6.8.4 Provide effective financial services to support the Shire's operations and to meet sustainability planning, reporting and accountability requirements.

SUSTAINABILITY

Social Implications

17. Nil.

Economic Implications

18. Nil.

Environmental Implications

19. Nil.

RISK MANAGEMENT CONSIDERATIONS

Debtors

20.

Risk	Likelihood	Consequence	Rating	Action/Strategy
The Shire is exposed to the potential risk of the debtor failing to make payments which it is obligated to do. This will result in the disruption of cash flows and increased collection costs. The loss may be complete or partial and can arise in a number of circumstances.	Possible	Minor	Low	Ensure debt collections is rigorously managed.

Creditors

21.	Risk	Likelihood	Consequence	Rating	Action/Strategy
	If the Shire defaults on payment to a creditor, the Shire runs the risk of an adverse credit record resulting in potential future disruptions on cash flows and ability to obtain credit.	Unlikely	Major	Low	Ensure all disputes are resolved in a timely manner.

OFFICER COMMENT

22. Nil.

A Councillor had asked a number of questions and these, with their answers, had been circulated prior to the meeting. The Presiding Member asked if these were satisfactory; the Councillor requested further clarification on EFT 36614. Director Infrastructure Services noted that this vehicle was to be used for the Facilities Maintenance Officer, a qualified plumber, who services buildings throughout the Shire.

There was also a further question on the answer referencing EFTs 3665, 36660 and 36681 this indicated that B&J Catalano withdrew their submission yet the Councillor noted they appear on the list of payments also some of the names on the payments list do not tie-up with the tender details. This question was taken on notice.

A Councillor asked what action is being taken to recover the outstanding debt from the Lesmurdie Tennis Club. The Director Corporate Services noted that he will brief Councillors prior to the Ordinary Council Meeting on 23 June 2014 with regard to this issue. In brief, the legal advice obtained does not indicate the Shire is in a strong position to pursue this, however there are some options that could be considered.

A Councillor queried the merits of purchasing vehicles over leasing them, the Director Infrastructure Services responded that this would be part of the fleet review to be carried out in the new financial year.

Voting Requirements: Simple Majority

COMMITTEE RECOMMENDATION TO COUNCIL (C&C 19/2014)

That Council:

1. Receives the list of payments made from the Municipal Accounts in May 2014 (Attachment 1) in accordance with the requirements of the *Local Government (Financial Management) Regulations 1996 (Regulation 12)*.

-
2. Receives the list of payments made from the Trust Accounts in May 2014 as noted in point 11 above in accordance with the requirements of the *Local Government (Financial management) Regulations 1996 (Regulation 12)*.
 3. Receives the outstanding debtors (Attachment 2) and creditors (Attachment 3) reports for the month of May 2014.

Moved: **Cr Margaret Thomas**

Seconded: **Cr Dylan O'Connor**

Vote: **CARRIED UNANIMOUSLY (11/0)**

Attachment 1

Chq/EFT	Date	Name	Description	Amount
717	05/05/2014	LES MILLS AUSTRALIA	MONTHLY LICENCE FEE	1000.54
718	07/05/2014	AUSTRALIAN TAXATION OFFICE	TAXATION	185164.31
719	09/05/2014	IINET TECHNOLOGIES PTY LTD	INTERNET ACCESS	829.00
720	12/05/2014	WESTERN AUSTRALIAN TREASURY CORPORATION	LOAN # 216 INTEREST PAYMENT	4508.52
721	14/05/2014	COMMONWEALTH BANK - BUSINESS CARD	BUSINESS CORPORATE CARD - VARIOUS PURCHASES HACC ACTIVITY OFFICER - \$839.50 LIBRARY SERVICES TEAM LEADER - \$2789.90 HACC ACTIVITY OFFICER - \$52.50 HACC ACTIVITY OFFICER - \$2961.77 HEALTHLY COMMUNITIES TEAM LEADER - \$24.64 FUNCTIONS CO-ORDINATOR - \$2120.94 CO-ORDINATOR PROCUREMENT - \$1004.80 HACC ACTIVITY OFFICER - \$131.00 HACC ACTIVITY OFFICER - \$1081.54 HACC ACTIVITY OFFICER - \$74.00 MANAGER HR - \$2406.14 DAY CENTRE CO-ORDINATOR - \$577.35	14064.08
722	16/05/2014	WESTERN AUSTRALIAN TREASURY CORPORATION	LOAN # 217 INTEREST PAYMENT	2577.48
723	21/05/2014	AUSTRALIAN TAXATION OFFICE	TAXATION	157841.34
EFT36258	05/05/2014	DARLING RANGE CONNECT - SAVE KALAMUNDA SHIRE ACTION GROUP	DONATION TO SAVE KALAMUNDA SHIRE ACTION GROUP	10583.35
EFT36259	08/05/2014	KALAMUNDA ACCIDENT REPAIR CENTRE	INSURANCE EXCESS FOR REPAIRS TO VEHICLE	1054.90
EFT36260	08/05/2014	MOTORCHARGE - WRIGHT EXPRESS FUEL CARDS AUSTRALIA LTD	FUEL - PERIOD ENDING 30 APRIL 2014	4618.05

Chq/EFT	Date	Name	Description	Amount
EFT36261	08/05/2014	HAEFELI-LYSNAR SURVEY EQUIPMENT	SUPPLY OF SURVEY EQUIPMENT	776.60
EFT36262	08/05/2014	YMCA OF PERTH INC	YMCA MANAGEMENT FEES - OCT 2013 - DEC - 2013 AT KALAMUNDA WATER PARK	65697.50
EFT36263	08/05/2014	NEVERFAIL SPRINGWATER LTD (KALA LIB)	BOTTLED WATER SUPPLIES / MAINTENANCE	59.10
EFT36264	08/05/2014	KALAMUNDA GLASS & WINDSCREENS ON WHEELS	GLASS REPAIRS / MAINTENANCE FOR VARIOUS LOCATIONS	350.00
EFT36265	08/05/2014	FIRE AND SAFETY WA	FIRE PROTECTION WEAR / SUPPLIES	2372.49
EFT36266	08/05/2014	FREESTYLE NOW	MANAGEMENT AND ORGANISATION OF SKATEPARK COMPETITION AT RAMP IT UP 2014	2090.00
EFT36267	08/05/2014	CABCHARGE AUSTRALIA LIMITED	CABCHARGE FEES	6.00
EFT36268	08/05/2014	NEVERFAIL SPRINGWATERLTD (FORRESTFIELD LIB)	BOTTLED WATER SUPPLIES / MAINTENANCE	51.50
EFT36269	08/05/2014	PICTON PRESS	PRINTING OF BROCHURES FOR VARIOUS EVENTS	6080.38
EFT36270	08/05/2014	THE PLANNING GROUP WA PTY LTD	PROFESSIONAL SERVICES - PIONEER PARK MASTER PLAN	7700.00
EFT36271	08/05/2014	VE GRAPHICS PTY LTD	UPDATE CORYMBIA BANNERS - NUMBER STICKERS	151.80
EFT36272	08/05/2014	DOT ULIJN (DOT BLASZCZAK)	CONSIGNMENT SUPPLIER - ZIG ZAG CULTURAL CENTRE - 01/04/14 - 30/04/14	84.00
EFT36273	08/05/2014	PARAMOUNT SECURITY SERVICES	SECURITY SERVICES - RAMP IT UP 2014	1441.00
EFT36274	08/05/2014	VIP CARPET AND UPHOLSTERY CLEANING SERVICE	CARPET CLEANING AT VARIOUS LOCATIONS	150.00
EFT36275	08/05/2014	ALLION LEGAL	GENERAL EMPLOYMENT SERVICES	9979.63
EFT36276	08/05/2014	EVANGELINE CHRISTINA MEATH	TRAVEL COMMUNITY VISITORS SCHEME REFUND	24.00
EFT36277	08/05/2014	PATRICK JOHN HOGARTH	PLANNING APPLICATION FEE REFUND	147.00
EFT36278	08/05/2014	ANITA MARIE SCHUBERT	RATES REFUND	109.80

Chq/EFT	Date	Name	Description	Amount
EFT36279	08/05/2014	ROBYN BEARDSSELL	CONSIGNMENT SUPPLIER - ZIG ZAG CULTURAL CENTRE - 01/04/14 - 30/04/14	15.40
EFT36280	08/05/2014	CAROL ANNE CRUTE	CONSIGNMENT SUPPLIER - ZIG ZAG CULTURAL CENTRE - 01/04/14 - 30/04/14	28.00
EFT36281	08/05/2014	ISAAC JOSEPH STRAUSS	HALL AND KEY BOND REFUND	550.00
EFT36282	08/05/2014	ANNE MARY LIGHT	RATES REFUND	770.60
EFT36283	08/05/2014	CARMEL VALLEY CHOCOLATES	CONSIGNMENT SUPPLIER - ZIG ZAG CULTURAL CENTRE - 01/04/14 - 30/04/14	54.60
EFT36284	08/05/2014	ZANTHORREA NURSERY	GARDEN / VERGE SUPPLIES FOR VARIOUS LOCATIONS	226.05
EFT36285	08/05/2014	GILL BAXTER	CONSIGNMENT SUPPLIER - ZIG ZAG CULTURAL CENTRE - 01/04/14 - 30/04/14	10.50
EFT36286	08/05/2014	ROBIN EVELYN BOYD	RATES REFUND	546.61
EFT36287	08/05/2014	HENRY J & TAMARA K VELLINGA	FOOTPATH DEPOSIT REFUND	1000.00
EFT36288	08/05/2014	WA LOCAL GOVERNMENT SUPERANNUATION PLAN	SUPERANNUATION CONTRIBUTIONS	95323.39
EFT36289	08/05/2014	SHIRE OF KALAMUNDA STAFF SOCIAL CLUB	PAYROLL DEDUCTIONS	308.00
EFT36290	08/05/2014	CHILD SUPPORT AGENCY	PAYROLL DEDUCTIONS	847.88
EFT36291	08/05/2014	AUSTRALIA POST	COUNTER BILLPAY TRANSACTION FEES	264.19
EFT36292	08/05/2014	COVS PARTS PTY LTD	PLANT / VEHICLE PARTS	580.97
EFT36293	08/05/2014	GULLY VIEWS NEWSAGENCY	SUBSCRIPTIONS & NEWSPAPERS FOR VARIOUS LOCATIONS	114.60
EFT36294	08/05/2014	KALAMUNDA AUTO ELECTRICS	PLANT / VEHICLE PARTS	561.00
EFT36295	08/05/2014	MCLEODS BARRISTERS & SOLICITORS	LEGAL EXPENSES	5073.22
EFT36296	08/05/2014	MIDWASTE - TRANSPACIFIC CLEANAWAY PTY LTD	WASTE / RECYCLING SERVICES	869.55
EFT36297	08/05/2014	SESCO SECURITY CO	SECURITY MONITORING SERVICES FOR VARIOUS LOCATIONS	8882.10
EFT36298	08/05/2014	LANDGATE - VALUATIONS	VALUATIONS FOR VARIOUS LOCATIONS	295.06

Chq/EFT	Date	Name	Description	Amount
EFT36299	08/05/2014	WALKERS HARDWARE (MITRE 10)	HARDWARE SUPPLIES	612.35
EFT36300	08/05/2014	MCKAY EARTHMOVING PTY LTD	PLANT EQUIPMENT AND OPERATOR HIRE FOR VARIOUS LOCATIONS	17118.59
EFT36301	08/05/2014	KALAMUNDA FENCING & GATE MAKERS	FENCING SUPPLIES / REPAIRS AT MENS SHED	2112.00
EFT36302	08/05/2014	DOMUS NURSERY	GARDEN SUPPLIES FOR VARIOUS LOCATIONS	1457.94
EFT36303	08/05/2014	FASTA COURIERS	COURIER FEES	156.24
EFT36304	08/05/2014	THE WATERSHED WATER SYSTEMS	RETICULATION PARTS FOR VARIOUS RESERVES	2560.62
EFT36305	08/05/2014	SANDGROPER SEPTICS	SEPTIC / GREASE TANK CLEAN OUT SERVICES AT VARIOUS LOCATIONS	1098.90
EFT36306	08/05/2014	MAJOR MOTORS PTY LTD	PLANT / VEHICLE PARTS	573.92
EFT36307	08/05/2014	BRADOCK PODIATRY SERVICES PTY LTD	PODIATRY SERVICES AT JACK HEALEY CENTRE	1038.80
EFT36308	08/05/2014	KALA BOB KATS PTY LTD	PLANT EQUIPMENT AND OPERATOR HIRE FOR VARIOUS LOCATIONS	2214.30
EFT36309	08/05/2014	STEWART & HEATON CLOTHING CO PTY LTD	FIRE PROTECTION WEAR / SUPPLIES	2542.30
EFT36310	08/05/2014	GRONBEK SECURITY	SECURITY KEY SERVICES TO VARIOUS SHIRE BUILDINGS	490.06
EFT36311	08/05/2014	GRIMES CONTRACTING PTY LTD	CONTRACTOR BUILDING MAINTENANCE FOR VARIOUS BUILDINGS	2082.32
EFT36312	08/05/2014	CADSULT IRRIGATION CONSULTANTS	IRRIGATION TECHNOLOGY CONSULTANTS	2574.00
EFT36313	08/05/2014	WESTSIDE FIRE SERVICES	TESTING AND INSPECTION OF FIRE EQUIPMENT / SUPPLIES	1298.00
EFT36314	08/05/2014	FOODWORKS FRESH FORRESTFIELD	GROCERY SUPPLIES	1128.39
EFT36315	08/05/2014	IT VISION	MAINTENANCE OF CURRENT SYSTEM AND REMOTE CUSTOMER ASSISTANCE	1650.00
EFT36316	08/05/2014	LESMURDIE SENIOR HIGH SCHOOL	CONTRIBUTION TOWARDS LESMURDIE COMMUNITY LIBRARY COSTS AS PER CONTRACT	330.00
EFT36317	08/05/2014	STAFF LINK PERSONNEL	HIRE OF TEMPORARY STAFF FOR DEPOT / ADMIN	3551.63

Chq/EFT	Date	Name	Description	Amount
EFT36318	08/05/2014	BASKETBALL RINGLEADER	SUPPLY AND INSTALL BASKET BALL EQUIPMENT FOR VARIOUS LOCATIONS	5665.00
EFT36319	08/05/2014	GREEN SKILLS (ECOJOBS)	LABOUR ASSISTANCE FOR TREE PLANTING	346.50
EFT36320	08/05/2014	EASTERN HILLS SAWS AND MOWERS	PLANT / VEHICLE PARTS	249.95
EFT36321	08/05/2014	GILFORD BUILDING SERVICES	FOOTPATH DEPOSIT REFUND	1000.00
EFT36322	08/05/2014	LOVEGROVE TURF SERVICES	TURF MAINTENANCE / SERVICES AT VARIOUS LOCATIONS	5500.00
EFT36323	08/05/2014	KALAMUNDA & DISTRICTS HISTORICAL SOCIETY	CONSIGNMENT SUPPLIER - ZIG ZAG CULTURAL CENTRE - 01/04/14 - 30/04/14	203.00
EFT36324	08/05/2014	CRABBS KALAMUNDA (IGA)	GROCERY SUPPLIES	287.71
EFT36325	08/05/2014	DALE ALCOCK HOMES PTY LTD	FOOTPATH DEPOSIT REFUND	2000.00
EFT36326	08/05/2014	KALAMUNDA VOLUNTEER BUSHFIRE BRIGADE	REIMBURSEMENT COSTS FOR VOLUNTEER BUSHFIRE BRIGADE	4919.24
EFT36327	08/05/2014	WATTLE GROVE VETERINARY HOSPITAL	VETERINARY FEES	200.00
EFT36328	08/05/2014	JOHN & NICOLA WALTERS	HALL AND KEY BOND REFUND	350.00
EFT36329	08/05/2014	ST JOHN AMBULANCE AUSTRALIA (WA) INC	FIRST AID COVER - RAMP IT UP 2014	411.60
EFT36330	08/05/2014	HELEN ARMSTRONG & ASSOCIATES (T/AS WAXING LYRICAL CANDLES)	CONSIGNMENT SUPPLIER - ZIG ZAG CULTURAL CENTRE - 01/04/14 - 30/04/14	42.00
EFT36331	08/05/2014	KALAMUNDA PLUMBING & ELECTRICAL	PLUMBING REPAIRS / MAINTENANC FOR VARIOUS LOCATIONS	3905.00
EFT36332	08/05/2014	HAWLEY'S BOBCAT SERVICE	PLANT EQUIPMENT AND OPERATOR HIRE FOR VARIOUS LOCATIONS	7437.40
EFT36333	08/05/2014	WILD SEASONS FLOWERS PTY LTD	WREATHS FOR ANZAC DAY	270.00
EFT36334	08/05/2014	HIGH WYCOMBE JUNIOR FOOTBALL CLUB	KIDSPORT FUNDING FOR VARIOUS PLAYERS	690.00
EFT36335	08/05/2014	J CORP PTY LTD	FOOTPATH DEPOSIT REFUND	1000.00
EFT36336	08/05/2014	HILL TOP GROUP PTY	CONTRACTOR BUILDING MAINTENANCE FOR VARIOUS BUILDINGS	3671.33
EFT36337	08/05/2014	POOL AND SPA MART / STIHL KALAMUNDA	PLANT / VEHICLE PARTS	1836.40

Chq/EFT	Date	Name	Description	Amount
EFT36338	08/05/2014	TRILOGY SERVICING PTY LTD	AIRCONDITIONING MAINTENANCE / REPAIRS FOR VARIOUS LOCATIONS	11601.85
EFT36339	08/05/2014	CHRIS WILLIAMSON	BOND REFUND FOR THE USE OF THE GALLERY AT THE ZIG ZAG CULTURAL CENTRE	500.00
EFT36340	08/05/2014	AUTO ONE KALAMUNDA	PLANT / VEHICLE PARTS	266.30
EFT36341	08/05/2014	DEBBIE JOSE JEWELLERY	CONSIGNMENT SUPPLIER - ZIG ZAG CULTURAL CENTRE - 01/04/14 - 30/04/14	63.00
EFT36342	08/05/2014	ANALYTICO PTY LTD	AUTODESK VEHICLE TRACKING 2014 SOFTWARE AND 1 YEAR SUBSCRIPTION (LICENCE RENEWAL OF AUTOTRACK SOFTWARE)	1834.25
EFT36343	08/05/2014	WEST AUSTRALIAN NEWSPAPERS HOLDINGS LTD	ADVERTISING WEST AUSTRALIAN NEWSPAPER ARTS DIRECTORY ZIG ZAG GALLERY EXHIBITIONS	133.20
EFT36344	08/05/2014	KANYANA WILDLIFE REHABILITATION CENTRE INC	CONSIGNMENT SUPPLIER - ZIG ZAG CULTURAL CENTRE - 01/04/14 - 30/04/14	199.20
EFT36345	08/05/2014	RED DIRT ARTS	CONSIGNMENT SUPPLIER - ZIG ZAG CULTURAL CENTRE - 01/04/14 - 30/04/14	265.37
EFT36346	08/05/2014	ASHLEY GRANT & NADIA WISEWOULD	RATES REFUND	436.80
EFT36347	08/05/2014	DUN & BRADSTREET (AUSTRALIA) PTY LTD	DEBT COLLECTION FEES FOR RATES	1250.94
EFT36348	08/05/2014	DIEBACK TREATMENT SERVICES	DIEBACK STEM INJECTION WORKSHOP AT NORWOOD RESERVE	1089.00
EFT36349	08/05/2014	FOOD TECHNOLOGY SERVICES PTY LTD	HIRE OF TEMPORARY STAFF FOR HEALTH DEPARTMENT	2346.85
EFT36350	08/05/2014	BGC RESIDENTIAL PTY LTD	FOOTPATH DEPOSIT REFUND	1000.00
EFT36351	08/05/2014	REPEAT PLASTICS (WA)	PLANT / VEHICLE PARTS	1745.72
EFT36352	08/05/2014	CONFECT - EXPRESS	KIOSK SUPPLIES FOR HARTFIELD RECREATION CENTRE	298.71
EFT36353	08/05/2014	SPECIALISED SECURITY SHREDDING	SECURE DOCUMENT DISPOSAL BIN REMOVAL AND REPLACEMENT	55.00

Chq/EFT	Date	Name	Description	Amount
EFT36354	08/05/2014	HERTZ AUSTRALIA PTY LTD	HIRE OF 4X4 UTILITY VEHICLE FOR FIRE HAZARD INSPECTOR	2049.30
EFT36355	08/05/2014	ANTHONY PAUL MUSTICA	RATES REFUND	1400.55
EFT36356	08/05/2014	GOOSEBERRY HILL ARTS & CRAFTS	KEY BOND REFUND	50.00
EFT36357	08/05/2014	ELECTRICITY NETWORKS CORP T/A WESTERN POWER	DETAIL DESIGN FOR THE RELOCATION OF A POWER POLE TO ACCOMMODATE ROAD WORKS	3000.00
EFT36358	08/05/2014	WOOLWORTHS LIMITED	GROCERY SUPPLIES	65.04
EFT36359	08/05/2014	FORRESTFIELD TENNIS CLUB (INC)	FORRESTFIELD TENNIS CLUB HIRE FEES FROM HARTFIELD PARK RECREATION CENTRE - 01/03/14 - 31/03/14	110.00
EFT36360	08/05/2014	MAIDA VALE DELIVERY ROUND	PAPER AND MAGAZINES DELIVERIES FOR HIGH WYCOMBE LIBRARY	53.75
EFT36361	08/05/2014	EASTERN REGION SECURITY	SECURITY SERVICES TO VARIOUS SHIRE BUILDINGS	6334.21
EFT36362	08/05/2014	G.D.CHARLTON	PODIATRY SERVICES AT JACK HEALEY CENTRE	764.49
EFT36363	08/05/2014	KALAMUNDA EASTERN SUNS BASKETBALL	KIDSPORT FUNDING FOR VARIOUS PLAYERS	660.00
EFT36364	08/05/2014	RACHEL URBANI	BOND REFUND AT HARTFIELD PARK RECREATION CENTRE	50.00
EFT36365	08/05/2014	NATALIE Warburton - Anatomy Designs	CONSIGNMENT SUPPLIER - ZIG ZAG CULTURAL CENTRE - 01/04/14 - 30/04/14	2.10
EFT36366	08/05/2014	ALLAN DAVIES & TREVOR CHUDLEIGH ARCHITECTS	ARCHITECTURAL SERVICES	2590.50
EFT36367	08/05/2014	AUSTRALIAN SUPERANNUATION	SUPERANNUATION CONTRIBUTIONS	1353.49
EFT36368	08/05/2014	ROBERT & ROSALIE CALIVA	FOOTPATH DEPOSIT REFUND	700.00
EFT36369	08/05/2014	MARY & NOEL HOFFMAN	CONSIGNMENT SUPPLIER - ZIG ZAG CULTURAL CENTRE - 01/04/14 - 30/04/14	41.97
EFT36370	08/05/2014	JANET ROBERTS	FOOTPATH DEPOSIT REFUND	1000.00

Chq/EFT	Date	Name	Description	Amount
EFT36371	08/05/2014	MADE 4 YOU (LYGIA)	CONSIGNMENT SUPPLIER - ZIG ZAG CULTURAL CENTRE - 01/04/14 - 30/04/14	3.50
EFT36372	08/05/2014	REDINK HOMES PTY LTD	FOOTPATH DEPOSIT REFUND	2950.00
EFT36373	08/05/2014	SHIRLEY SPENCER	CONSIGNMENT SUPPLIER - ZIG ZAG CULTURAL CENTRE - 01/04/14 - 30/04/14	84.00
EFT36374	08/05/2014	BEST CONSULTANTS PTY LTD	ELECTRICAL CONSULTANCY FOR HARTFIELD PARK MASTER PLAN WORKS	7837.50
EFT36375	08/05/2014	PETER TUCATS SUPERANNUATION FUND	SUPERANNUATION CONTRIBUTIONS	250.70
EFT36376	08/05/2014	BINDALE SUPERANNUATION FUND	SUPERANNUATION CONTRIBUTIONS	60.31
EFT36377	08/05/2014	PRIME SUPERANNUATION	SUPERANNUATION CONTRIBUTIONS	200.52
EFT36378	08/05/2014	CHRIS ANTILL PLANNING & URBAN DESIGN CONSULTANT	DRAFTING CHANGES TO THE FORRESTFIELD/HIGH WYCOMBE INDUSTRIAL ESTATE POSTER	341.00
EFT36379	08/05/2014	NEVERFAIL SPRINGWATER LTD (PETER ANDERTON CEN)	BOTTLED WATER SUPPLIES / MAINTENANCE	35.10
EFT36380	08/05/2014	CHRISTOPHER AND KIRSTI HARRIS	BUILDING APPLICATION FEE REFUND	90.00
EFT36381	08/05/2014	BRIKMAKERS	SUPPLY OF BRICK PAVERS	301.90
EFT36382	08/05/2014	KALAMUNDA UNITED FOOTBALL CLUB	KIDSPORT FUNDING FOR VARIOUS PLAYERS	3400.00
EFT36383	08/05/2014	NEW CHOICE HOMES	FOOTPATH DEPOSIT REFUND	1000.00
EFT36384	08/05/2014	FONZ'S BOBCAT & TRUCK HIRE	PLANT EQUIPMENT AND OPERATOR HIRE FOR VARIOUS LOCATIONS	4927.42
EFT36385	08/05/2014	NANCY GILLESPIE	CONSIGNMENT SUPPLIER - ZIG ZAG CULTURAL CENTRE - 01/04/14 - 30/04/14	14.00
EFT36386	08/05/2014	VISION SUPER PTY LTD	SUPERANNUATION CONTRIBUTIONS	928.64
EFT36387	08/05/2014	PATRICIA MOSS	CONSIGNMENT SUPPLIER - ZIG ZAG CULTURAL CENTRE - 01/04/14 - 30/04/14	12.60
EFT36388	08/05/2014	KALEIDOSCOPE CRAFT KITS	DRY CLEANING / WASHING SERVICES FOR HARTFIELD PARK RECREATION CENTRE	80.00

Chq/EFT	Date	Name	Description	Amount
EFT36389	08/05/2014	KARIN HOTCHKIN	CONSIGNMENT SUPPLIER - ZIG ZAG CULTURAL CENTRE - 01/04/14 - 30/04/14	24.50
EFT36390	08/05/2014	KENNARDS TRAFFIC MANAGEMENT WA	SUPPLY OF MESSAGE BOARD FOR ANZAC MARCH & DAWN SERVICE	1440.00
EFT36391	08/05/2014	LANDMARK PRODUCTS LIMITED	SUPPLY SANFORD DRINKING FOUNTAIN WITH DOG BOWL AND DISABILITY ACCESS FOR BILL SHAW RESERVE	3795.00
EFT36392	08/05/2014	AKA EVENTS HIRE	SEATING - RAMP IT UP 2014 SKATE COMPETITION	4708.00
EFT36393	08/05/2014	STARDATA PTY LTD	MONTHLY MAINTENANCE - STARDATA	1246.09
EFT36394	08/05/2014	JENNIFER DE YOUNG	VOLUNTEER TRANSPORT REIMBURSEMENT	378.00
EFT36395	08/05/2014	LINDSAY GOODWIN	TECHNICIAN SERVICES FOR VARIOUS EVENTS	391.00
EFT36396	08/05/2014	ANGELA CANCI	PODIATRY SERVICES AT JACK HEALEY SERVICES	234.97
EFT36397	08/05/2014	SUPALUX PAINT CO PTY LTD	SUPPLY MAINTENANCE PAINTING SERVICES AT VARIOUS LOCATIONS	16326.09
EFT36398	08/05/2014	KEN WYATT MP	HALL AND KEY BOND REFUND	400.00
EFT36399	08/05/2014	STRATEGEN ENVIRONMENTAL CONSULTANTS	PROFESSIONAL SERVICES - MOIRA AVE WATER MONITORING, WILKINS RD MRS AMENDMENT / EFBC REFERRAL	8996.35
EFT36400	08/05/2014	CLAIRE O'NEILL - CLAIRE'S EMBROIDERY	CONSIGNMENT SUPPLIER - ZIG ZAG CULTURAL CENTRE - 01/04/14 - 30/04/14	130.20
EFT36401	08/05/2014	LINDA STONES	CONSIGNMENT SUPPLIER - ZIG ZAG CULTURAL CENTRE - 01/04/14 - 30/04/14	92.40
EFT36402	08/05/2014	WA SPECIAL NEEDS CHILDREN'S CHRISTMAS PARTY	ANNUAL SPONSORSHIP OF WA SPECIAL NEEDS CHILDRENS CHRISTMAS PARTY EVENT	350.00
EFT36403	08/05/2014	PETER FALCONER	CONSIGNMENT SUPPLIER - ZIG ZAG CULTURAL CENTRE - 01/04/14 - 30/04/14	51.10
EFT36404	08/05/2014	CITY OF STIRLING	MEALS ON WHEELS PROGRAM - MARCH 2014	5652.84

Chq/EFT	Date	Name	Description	Amount
EFT36405	08/05/2014	MARY FORWARD	CONSIGNMENT SUPPLIER - ZIG ZAG CULTURAL CENTRE - 01/04/14 - 30/04/14	2.45
EFT36406	08/05/2014	SWAN UNITED FOOTBALL CLUB	KIDSPORT FUNDING FOR VARIOUS PLAYERS	200.00
EFT36407	08/05/2014	MACQUARIE EQUIPMENT RENTALS PTY LTD	FITOUT EQUIPMENT LEASE - KALAMUNDA WATER PARK	5811.86
EFT36408	08/05/2014	HANS SCHWALB	CONSIGNMENT SUPPLIER - ZIG ZAG CULTURAL CENTRE - 01/04/14 - 30/04/14	7.00
EFT36409	08/05/2014	JIM BAKER	CONSIGNMENT SUPPLIER - ZIG ZAG CULTURAL CENTRE - 01/04/14 - 30/04/14	52.50
EFT36410	08/05/2014	KIERAN INGRAM	CONSIGNMENT SUPPLIER - ZIG ZAG CULTURAL CENTRE - 01/04/14 - 30/04/14	35.00
EFT36411	08/05/2014	THE ARTFUL FLOWE - FELICIA LOWE	CONSIGNMENT SUPPLIER - ZIG ZAG CULTURAL CENTRE - 01/04/14 - 30/04/14	106.05
EFT36412	08/05/2014	DAVID GREEN	CONSIGNMENT SUPPLIER - ZIG ZAG CULTURAL CENTRE - 01/04/14 - 30/04/14	13.93
EFT36413	08/05/2014	CATHERINE DANIELS	REIMBURSEMENT FOR LIQUOR LICENCES FOR VARIOUS SHOWS AT KALAMUNDA PERFORMING ARTS CENTRE	102.00
EFT36414	08/05/2014	MPJ (WA) PTY LTD	SUPERANNUATION CONTRIBUTIONS	504.78
EFT36415	08/05/2014	TAMARA HOCKING	GROUP FITNESS CLASSES INSTRUCTOR	408.87
EFT36416	08/05/2014	CIC EVENTS MANAGEMENT	FUNDING FOR TOUR DE PERTH - SPONSORSHIP	5500.00
EFT36417	08/05/2014	KALAMUNDA DISTRICTS RUGBY UNION CLUB	KIDSPORT FUNDING FOR VARIOUS PLAYERS	1090.00
EFT36418	08/05/2014	NICHOLAS TAYLOR PHOTOGRAPHY	CONSIGNMENT SUPPLIER - ZIG ZAG CULTURAL CENTRE - 01/04/14 - 30/04/14	96.60
EFT36419	08/05/2014	SILK ON SILK (ROSEMARY LONSDALE)	CONSIGNMENT SUPPLIER - ZIG ZAG CULTURAL CENTRE - 01/04/14 - 30/04/14	136.50
EFT36420	08/05/2014	CUROST MILK SUPPLY	MILK SUPPLY FOR ADMINISTRATION CENTRE AND DEPOT	246.51

Chq/EFT	Date	Name	Description	Amount
EFT36421	08/05/2014	MAVIS PASKULICH	CONSIGNMENT SUPPLIER - ZIG ZAG CULTURAL CENTRE - 01/04/14 - 30/04/14	72.80
EFT36422	08/05/2014	BEESWAX CREATIONS	CONSIGNMENT SUPPLIER - ZIG ZAG CULTURAL CENTRE - 01/04/14 - 30/04/14	5.25
EFT36423	08/05/2014	TIERRA ECOLOGIA	CONSIGNMENT SUPPLIER - ZIG ZAG CULTURAL CENTRE - 01/04/14 - 30/04/14	110.60
EFT36424	08/05/2014	A1 TROJAN PEST CONTROL	PEST CONTROL SERVICES FOR VARIOUS LOCATIONS	444.00
EFT36425	08/05/2014	MARY SQUILLACE	KEY BOND REFUND	50.00
EFT36426	08/05/2014	VISSYART	CONSIGNMENT SUPPLIER - ZIG ZAG CULTURAL CENTRE - 01/04/14 - 30/04/14	3.64
EFT36427	08/05/2014	SPARKS REFRIGERATION AND AIRCONDITIONING	SUPPLY OF GAS REMOVAL SERVICES FOR WHITE GOODS AT WALLISTON TRANSFER STATION	3089.99
EFT36428	08/05/2014	SCORPION TRAINING SOLUTIONS	REGISTRATION FOR 8 STAFF TO ATTEND REMOVE NON-FRIABLE ASBESTOS TRAINING COURSE	2800.00
EFT36429	08/05/2014	IRRIGATION WA PTY LTD	IRRIGATION MAINTENANCE	350.46
EFT36430	08/05/2014	KRISTY-THANAYA COSTANZO	RATES REFUND	100.00
EFT36431	08/05/2014	NEVERFAIL SPRINGWATER LTD (ADMIN OFFICE)	BOTTLED WATER SUPPLIES / MAINTENANCE	26.65
EFT36432	08/05/2014	OFF PEN PUBLISHING - BETH BAKER	CONSIGNMENT SUPPLIER - ZIG ZAG CULTURAL CENTRE - 01/04/14 - 30/04/14	2.80
EFT36433	08/05/2014	STAN THE TYRE MAN (STAN'S TYRE SERVICE WA)	PLANT / VEHICLE PARTS	575.30
EFT36434	08/05/2014	WOBBLYJULES INVESTMENTS FUND	SUPERANNUATION CONTRIBUTIONS	397.39
EFT36435	08/05/2014	SEACLIFF BUILDING & CONSTRUCTION PTY LTD	FOOTPATH DEPOSIT REFUND	1200.00
EFT36436	08/05/2014	MICHELLE BALLA	HALL AND KEY BOND REFUND	350.00
EFT36437	08/05/2014	NEXXIAL ECOLOGY PTY LTD	WEED CONTROL FOR MAIDA VALE RESERVE	1980.00
EFT36438	08/05/2014	GRAHAM STIMSON	CONSIGNMENT SUPPLIER - ZIG ZAG CULTURAL CENTRE - 01/04/14 - 30/04/14	126.00

Chq/EFT	Date	Name	Description	Amount
EFT36439	08/05/2014	BALLIGART - HELEN LOCK	CONSIGNMENT SUPPLIER - ZIG ZAG CULTURAL CENTRE - 01/04/14 - 30/04/14	23.10
EFT36440	08/05/2014	IMAGININGS LIFE IMAGES BY SUE	CONSIGNMENT SUPPLIER - ZIG ZAG CULTURAL CENTRE - 01/04/14 - 30/04/14	6.30
EFT36441	08/05/2014	AUSTRALIAN CATHOLIC SUPERANNUATION & RETIREMENT FUND (ACSRF)	SUPERANNUATION CONTRIBUTIONS	298.38
EFT36442	08/05/2014	PETER WEBB	CONSIGNMENT SUPPLIER - ZIG ZAG CULTURAL CENTRE - 01/04/14 - 30/04/14	10.43
EFT36443	08/05/2014	REDLINE (WA) PTY LTD	PROGRESS CLAIM AND VARIATION FOR THE CONSTRUCTION OF ABERNETHY ROAD SEWER MAIN	155936.61
EFT36444	08/05/2014	KALAMUNDA PATISSERIE	CATERING SUPPLIES	34.00
EFT36445	08/05/2014	LINDAS BOOKS / ROLEYSTONE COURIER	CONSIGNMENT SUPPLIER - ZIG ZAG CULTURAL CENTRE - 01/04/14 - 30/04/14	36.40
EFT36446	08/05/2014	BRENDAS CLAY CRAFT	CONSIGNMENT SUPPLIER - ZIG ZAG CULTURAL CENTRE - 01/04/14 - 30/04/14	8.40
EFT36447	08/05/2014	IRENE YOUNG	CONSIGNMENT SUPPLIER - ZIG ZAG CULTURAL CENTRE - 01/04/14 - 30/04/14	8.40
EFT36448	08/05/2014	THE SULLIVAN SUPER FUND	SUPERANNUATION CONTRIBUTIONS	651.29
EFT36449	08/05/2014	WAITAWHILE ART	CONSIGNMENT SUPPLIER - ZIG ZAG CULTURAL CENTRE - 01/04/14 - 30/04/14	2.52
EFT36450	08/05/2014	AMAZING CLEAN BLINDS LESMURDIE	WINDOW BLIND CLEANING REPAIR AND REPLACEMENT SERVICES AT VARIOUS LOCATIONS	1100.00
EFT36451	08/05/2014	ROLEYSTONE GYMNASTICS CLUB	KIDSPORT FUNDING FOR VARIOUS PLAYERS	100.00
EFT36452	08/05/2014	FAIRHOLME DISABILITY SUPPORT GROUP INC.	DONATION FOR SCREENING OF THE RIDE MOVIE AT THE ZIG ZAG SEMINAR ROOM	1672.00
EFT36453	08/05/2014	MUSIC ROCKS AUSTRALIA	YOUTH WORKSHOPS - RAMP IT UP 2014	1573.00
EFT36454	08/05/2014	CHRISTOPHER J SULTANA	FOOTPATH DEPOSIT REFUND	1200.00

Chq/EFT	Date	Name	Description	Amount
EFT36455	08/05/2014	BAYSWATER CITY SOCCER CLUB	KIDSPORT FUNDING FOR VARIOUS PLAYERS	200.00
EFT36456	08/05/2014	ROVERS NETBALL CLUB	KIDSPORT FUNDING FOR VARIOUS PLAYERS	195.00
EFT36457	08/05/2014	LEAH MATTHES	REIMBURSEMENT FOR REFRESHMENTS AT SCREENING OF THE RIDE AT ZIG ZAG CULTURAL CENTRE	77.36
EFT36458	08/05/2014	RESIDENTIAL FENCING	FENCING TO LEFT HAND SIDE OF LOT 918 MONARCH WAY	1672.00
EFT36459	08/05/2014	JANET AUDREY BIRD	KEY BOND REFUND	50.00
EFT36460	08/05/2014	PAPUA NEW GUINEA ASSOCIATION OF WA INC.	HALL AND KEY BOND REFUND	350.00
EFT36461	22/05/2014	MOTORCHARGE - WRIGHT EXPRESS FUEL CARDS AUSTRALIA LTD	FUEL - PERIOD ENDING 15 MAY 2014	6765.94
EFT36462	22/05/2014	NIGHTINGALES PHARMACY	BOND REFUND FOR THE USE OF THE SEMINAR ROOM AT THE ZIG ZAG CULTURAL CENTRE	400.00
EFT36463	22/05/2014	NEVERFAIL SPRINGWATER LTD (KALA LIB)	BOTTLED WATER SUPPLIES / MAINTENANCE	66.65
EFT36464	22/05/2014	JB HI-FI MIDLAND	ELECTRICIAL SUPPLIES	78.85
EFT36465	22/05/2014	1ST FORRESTFIELD SCOUT GROUP	KIDSPORT FUNDING FOR VARIOUS PLAYERS	600.00
EFT36466	22/05/2014	KALAMUNDA GLASS & WINDSCREENS ON WHEELS	GLASS REPAIRS / MAINTENANCE FOR VARIOUS LOCATIONS	1363.71
EFT36467	22/05/2014	VERONICA ROSSI	FOOTPATH DEPOSIT REFUND	1000.00
EFT36468	22/05/2014	NEVERFAIL SPRINGWATERLTD (FORRESTFIELD LIB)	BOTTLED WATER SUPPLIES / MAINTENANCE	8.85
EFT36469	22/05/2014	PICTON PRESS	PRINTING OF BROCHURES FOR VARIOUS EVENTS	99.43
EFT36470	22/05/2014	MACQUARIE EQUIPMENT FINANCE PTY LTD	EQUIPMENT RENTAL FOR IT DEPARTMENT	1519.51
EFT36471	22/05/2014	MONSTERBALL AMUSEMENTS & HIRE	AMUSEMENT HIRE - RAMP IT UP 2014	1890.00
EFT36472	22/05/2014	TOP OF THE LADDER GUTTER CLEANING	GUTTER CLEANING SERVICES FOR VARIOUS LOCATIONS	2651.00
EFT36473	22/05/2014	BEES HIRE & SALES	SUPPLY AND ERECT SCAFFOLDING TO KALAMUNDA PERFORMING ARTS CENTRE	264.00

Chq/EFT	Date	Name	Description	Amount
EFT36474	22/05/2014	LMW HEGNEY	UPDATED VALUATION FOR LOTS 7,8 AND 4255 LEWIS ROAD	1650.00
EFT36475	22/05/2014	ALLAN & LORAIN THOMPSON	RATES REFUND	337.62
EFT36476	22/05/2014	JOHN ACTON	HALL AND KEY BOND REFUND	350.00
EFT36477	22/05/2014	ANNE SLAVIN	RATES REFUND	595.72
EFT36478	22/05/2014	RICHARD FINCH	CROSSOVER CONTRIBUTION	385.00
EFT36479	22/05/2014	LAURA & DARRYL MCCART	PLANNING APPLICATION FEE REFUND	147.00
EFT36480	22/05/2014	WA LOCAL GOVERNMENT SUPERANNUATION PLAN	SUPERANNUATION CONTRIBUTIONS	87767.49
EFT36481	22/05/2014	SHIRE OF KALAMUNDA STAFF SOCIAL CLUB	PAYROLL DEDUCTIONS	300.00
EFT36482	22/05/2014	CHILD SUPPORT AGENCY	PAYROLL DEDUCTIONS	724.38
EFT36483	22/05/2014	AUSTRALIA POST	POSTAL EXPENSES	4840.90
EFT36484	22/05/2014	COVS PARTS PTY LTD	PLANT / VEHICLE PARTS	733.06
EFT36485	22/05/2014	GULLY VIEWS NEWSAGENCY	SUBSCRIPTIONS & NEWSPAPERS FOR VARIOUS LOCATIONS	450.25
EFT36486	22/05/2014	KALAMUNDA TOYOTA	PLANT / VEHICLE PARTS	255.43
EFT36487	22/05/2014	WA LOCAL GOVERNMENT ASSOC	REGISTRATION FOR 1 STAFF TO ATTEND INTRODUCTION TO LOCAL GOVERNMENT E- LEARNING COURSE	214.50
EFT36488	22/05/2014	MCLEODS BARRISTERS & SOLICITORS	LEGAL EXPENSES	1165.14
EFT36489	22/05/2014	LANDGATE - VALUATIONS	VALUATIONS FOR VARIOUS LOCATIONS	766.09
EFT36490	22/05/2014	WALKERS HARDWARE (MITRE 10)	HARDWARE SUPPLIES	189.13
EFT36491	22/05/2014	MCKAY EARTHMOVING PTY LTD	PLANT EQUIPMENT AND OPERATOR HIRE FOR VARIOUS LOCATIONS	33237.30
EFT36492	22/05/2014	A & S HILL	ELECTRICIAL REPAIRS / MAINTENANCE FOR VARIOUS LOCATIONS	28311.03
EFT36493	22/05/2014	3 VODAFONE HUTCHISON AUSTRALIA PTY LTD	COMMUNICATION EXPENSES	2063.69
EFT36494	22/05/2014	FASTA COURIERS	COURIER FEES	405.59
EFT36495	22/05/2014	THE WATERSHED WATER SYSTEMS	RETICULATION PARTS FOR VARIOUS RESERVES	2819.96

Chq/EFT	Date	Name	Description	Amount
EFT36496	22/05/2014	BRADOCK PODIATRY SERVICES PTY LTD	PODIATRY SERVICES AT JACK HEALEY CENTRE	1038.80
EFT36497	22/05/2014	DAYNITE TOWING SERVICE (WA) PTY LTD (FORMERLEY MOBITOW PTY LTD)	TOWING SERVICES	220.00
EFT36498	22/05/2014	LINDLEY CONTRACTING	PLUMBING REPAIRS / MAINTENANCE FOR VARIOUS LOCATIONS	14883.00
EFT36499	22/05/2014	KALA BOB KATS PTY LTD	PLANT EQUIPMENT AND OPERATOR HIRE FOR VARIOUS LOCATIONS	1464.10
EFT36500	22/05/2014	GRONBEK SECURITY	SECURITY KEY SERVICES TO VARIOUS SHIRE BUILDINGS	707.92
EFT36501	22/05/2014	GRIMES CONTRACTING PTY LTD	CONTRACTOR BUILDING MAINTENANCE FOR VARIOUS BUILDINGS	4603.70
EFT36502	22/05/2014	DORMA AUTOMATICS PTY LTD	DOOR MAINTENANCE TO VARIOUS LOCATIONS	693.00
EFT36503	22/05/2014	STAPLES AUSTRALIA PTY LTD(CORPORATE EXPRESS AUSTRALIA LTD)	IT EQUIPMENT	33943.64
EFT36504	22/05/2014	FULTON HOGAN INDUSTRIES PTY LTD	ASPHALTING RESURFACING AT VARIOUS LOCATIONS	355610.51
EFT36505	22/05/2014	FOODWORKS FRESH FORRESTFIELD	GROCERY SUPPLIES	874.05
EFT36506	22/05/2014	KALAMUNDA YOUTH SWING BAND	KEY BOND REFUND	50.00
EFT36507	22/05/2014	LO-GO APPOINTMENTS	HIRE OF TEMPORARY STAFF FOR DEPOT / ADMIN	4579.30
EFT36508	22/05/2014	STAFF LINK PERSONNEL	HIRE OF TEMPORARY STAFF FOR DEPOT / ADMIN	5926.37
EFT36509	22/05/2014	ZIG ZAG GRAPHICS AND PRINT	GRAPHIC DESIGN & PRINTING OF SITE INSTRUCTION PADS	968.50
EFT36510	22/05/2014	AIR LIQUIDE WA PTY LTD	GAS BOTTLE FACILITY FEE	111.27
EFT36511	22/05/2014	LOVEGROVE TURF SERVICES	TURF MAINTENANCE / SERVICES AT VARIOUS LOCATIONS	78.00
EFT36512	22/05/2014	KALAMUNDA & DISTRICTS FOOTBALL CLUB	REIMBURSEMENT FOR GENERAL MAINTENANCE SUPPLIES	1601.15

Chq/EFT	Date	Name	Description	Amount
EFT36513	22/05/2014	CRABBS KALAMUNDA (IGA)	GROCERY SUPPLIES	309.87
EFT36514	22/05/2014	ANDANTINO PTY LTD T/AS OUTDOOR WORLD	BUILDING APPLICATION FEE REFUND	40.50
EFT36515	22/05/2014	KALAMUNDA VOLUNTEER BUSHFIRE BRIGADE	REIMBURSEMENT COSTS FOR VOLUNTEER BUSHFIRE BRIGADE	1387.57
EFT36516	22/05/2014	ASHMY PTY LTD	FOOTPATH DEPOSIT REFUND	1000.00
EFT36517	22/05/2014	SWAN MARQUEES AND PARTY HIRE	EQUIPMENT HIRE - KALAMUNDA CAREERS EXPO	735.60
EFT36518	22/05/2014	TOTAL EDEN PTY LTD	CONTROL SYSTEM SERVICE PLAN	1980.00
EFT36519	22/05/2014	HAWLEY'S BOBCAT SERVICE	PLANT EQUIPMENT AND OPERATOR HIRE FOR VARIOUS LOCATIONS	9541.40
EFT36520	22/05/2014	WILD SEASONS FLOWERS PTY LTD	FLOWER ARRANGEMENTS	75.00
EFT36521	22/05/2014	FORRESTFIELD NEWSPAPERS & MAGAZINES DELIVERY	NEWSPAPERS / MAGAZINES DELIVERIES FOR VARIOUS LOCATIONS	145.12
EFT36522	22/05/2014	WA HINO SALES & SERVICE	SUPPLY OF 2 NEW HEAVY VEHICLE TRUCKS FOR DEPOT	115868.30
EFT36523	22/05/2014	AMEREX FIRE (WA) (E FIRE AND SAFETY)	FIRE EQUIPMENT MAINTENANCE FOR VARIOUS LOCATIONS	831.60
EFT36524	22/05/2014	HILL TOP GROUP PTY	CONTRACTOR BUILDING MAINTENANCE FOR VARIOUS BUILDINGS	11198.00
EFT36525	22/05/2014	OASIS PATIOS	BUILDING APPLICATION FEE REFUND	90.00
EFT36526		EFT PAYMENT CANCELLED		
EFT36527	22/05/2014	TAJ ENTERPRISES	TOD JOHNSTON AND SUE BLUCK PERFORMANCE FOR MORNING MUSIC	990.00
EFT36528	22/05/2014	PERRY ENVIRONMENTAL CONTRACTING	WEED CONTROL AT VARIOUS LOCATIONS	1980.00
EFT36529	22/05/2014	PRIME CORPORATE PSYCHOLOGY SERVICES P/L	EMPLOYEE ASSISTANCE PROGRAMME	286.00
EFT36530	22/05/2014	DUN & BRADSTREET (AUSTRALIA) PTY LTD	DEBT COLLECTION FEES FOR RATES	121.20
EFT36531	22/05/2014	ATI-MIRAGE TRAINING SOLUTIONS	REGISTRATION FOR 1 STAFF TO ATTEND MANAGING PEOPLE COURSE	343.99
EFT36532	22/05/2014	CHRISTINE PES	FOOTPATH DEPOSIT REFUND	1000.00

Chq/EFT	Date	Name	Description	Amount
EFT36533	22/05/2014	CONFECT - EXPRESS	KIOSK SUPPLIES FOR HARTFIELD RECREATION CENTRE	333.30
EFT36534	22/05/2014	TRANEN REVEGETATION SYSTEMS	SEED COLLECTION SERVICES AND PROCESSING	1089.00
EFT36535	22/05/2014	HERTZ AUSTRALIA PTY LTD	HIRE OF 4X4 UTILITY VEHICLE FOR FIRE HAZARD INSPECTOR	68.31
EFT36536	22/05/2014	CABLE LOCATES & CONSULTING	LOCATION SERVICES FOR VARIOUS AREAS	9358.42
EFT36537	22/05/2014	SQUASH RACKETS ASSOCIATION OF WESTERN AUSTRALIA INC (WA SQUASH)	NEWSPAPER ADVERTISEMENT FOR SQUASH HOLIDAY PROGRAM	100.00
EFT36538	22/05/2014	FORRESTFIELD TENNIS CLUB (INC)	FORRESTFIELD TENNIS CLUB HIRE FEES FROM HPRC 1/04/14 - 30/04/14	44.00
EFT36539	22/05/2014	G.D.CHARLTON	PODIATRY SERVICES AT JACK HEALEY CENTRE	1180.36
EFT36540	22/05/2014	KIM'S SKIM	PLANT / VEHICLE PARTS	132.00
EFT36541	22/05/2014	SECURE TRAFFIC	TRAFFIC MANAGEMENT FOR VARIOUS LOCATIONS	9761.40
EFT36542	22/05/2014	CANNINGTON WA PTY LTD	RATES REFUND	199.41
EFT36543	22/05/2014	EASIFLEET MANAGEMENT	STAFF CONTRIBUTIONS TO NOVATED LEASES	9383.48
EFT36544	22/05/2014	AGED & COMMUNITY SERVICES WA INC	5 SEATS FOR ACSWA EXCELLENCE IN CARE AWARDS	580.00
EFT36545	22/05/2014	AUSTRALIAN SUPERANNUATION	SUPERANNUATION CONTRIBUTIONS	1607.01
EFT36546	22/05/2014	ERNESTOS & TAMMY KOSTAS	FOOTPATH DEPOSIT REFUND	1000.00
EFT36547	22/05/2014	CONCEPT CARPENTARY WA PTY LTD (CONCEPT STEEL CONSTRUCTION)	FOOTPATH DEPOSIT REFUND	1000.00
EFT36548	22/05/2014	SCOTT HENDERSON COLEY	RATES REFUND	333.20
EFT36549	22/05/2014	MATTHEW GEORGE COOPER	RATES REFUND	1251.06
EFT36550	22/05/2014	HARVEY NORMAN ELECTRICS MIDLAND	ELECTRICIAL SUPPLIES	239.70
EFT36551	22/05/2014	ROSE SMART	MAINTAIN ROSE BEDS AT VARIOUS LOCATIONS	1769.00
EFT36552	22/05/2014	LISA CHRISTINE SMITH	FOOTPATH DEPOSIT REFUND	1200.00
EFT36553	22/05/2014	PETER TUCATS SUPERANNUATION FUND	SUPERANNUATION CONTRIBUTIONS	250.70
EFT36554	22/05/2014	BINDALE SUPERANNUATION FUND	SUPERANNUATION CONTRIBUTIONS	69.39

Chq/EFT	Date	Name	Description	Amount
EFT36555	22/05/2014	PRIME SUPERANNUATION	SUPERANNUATION CONTRIBUTIONS	200.52
EFT36556	22/05/2014	NEVERFAIL SPRINGWATER LTD (PETER ANDERTON CEN)	BOTTLED WATER SUPPLIES / MAINTENANCE	22.75
EFT36557	22/05/2014	SHAYNE THOMAS LANKOWSKI	FOOTPATH DEPOSIT REFUND	1000.00
EFT36558	22/05/2014	NEVERFAIL SPRINGWATER LTD (ZZCC)	BOTTLED WATER SUPPLIES / MAINTENANCE	39.35
EFT36559	22/05/2014	LIBERTY OIL WESTERN AUSTRALIA PTY LTD	SUPPLY OF FUEL	41135.92
EFT36560	22/05/2014	SUPERIOR LAWNS AUSTRALIA	RESERVE / GARDEN SUPPLIES	1500.00
EFT36561	22/05/2014	PH CONCRETE (WA) PTY LTD	FOOTPATH MAINTENANCE / REPAIRS FOR VARIOUS LOCATIONS	6781.24
EFT36562	22/05/2014	SINGLE TRACK MINDS	KEY BOND REFUND	50.00
EFT36563	22/05/2014	STATE WIDE TURF SERVICES	TURF SUPPLIES / MAINTENANCE FOR KOSTERA OVAL	8360.00
EFT36564	22/05/2014	JORGE'S CONTRACTING SERVICES	CLEANING SERVICES AT PETER ANDERTON CENTRE	2412.85
EFT36565	22/05/2014	BENCHMARK MAINTENANCE SERVICES	CONTRACTOR BUILDING MAINTENANCE VARIOUS BUILDINGS	594.00
EFT36566	22/05/2014	FONZ'S BOBCAT & TRUCK HIRE	PLANT EQUIPMENT AND OPERATOR HIRE FOR VARIOUS LOCATIONS	5374.32
EFT36567	22/05/2014	BETHANIE EVERETT	CROSSOVER BOND REFUND - WAPC 20011 - LOT 209 BARBARY ROAD HIGH WYCOMBE	5445.00
EFT36568	22/05/2014	VISION SUPER PTY LTD	SUPERANNUATION CONTRIBUTIONS	767.38
EFT36569	22/05/2014	WEST-SURE GROUP	CASH IN TRANSIT SERVICES FOR APRIL 2014	1782.00
EFT36570	22/05/2014	MATHEW ONG	CROSSOVER CONTRIBUTION	385.00
EFT36571	22/05/2014	TM CONSTRUCTION WA PTY LTD	FOOTPATH DEPOSIT REFUND	1000.00
EFT36572	22/05/2014	SIMSAI CONSTRUCTION GROUP PTY LTD	FOOTPATH DEPOSIT REFUND	1000.00
EFT36573	22/05/2014	KALAMUNDA SHS EDUCATION SUPPORT CENTRE	KEY BOND REFUND	50.00
EFT36574	22/05/2014	PROMOTIF PROMOTIONAL MERCHANDISE	LAPEL PINS FOR NATIONAL VOLUNTEER WEEK	89.00
EFT36575	22/05/2014	WOW WILDERNESS	DIEBACK BOOT CLEANING PARTS	110.00

Chq/EFT	Date	Name	Description	Amount
EFT36576	22/05/2014	SUPALUX PAINT CO PTY LTD	SUPPLY MAINTENANCE PAINTING SERVICES AT KALAMUNDA PERFORMING ARTS CENTRE	1606.55
EFT36577	22/05/2014	A PLUS TRAINING SOLUTIONS	REGISTRATION FOR 8 STAFF TO ATTEND MOBILE CHIPPER TRAINING	2000.00
EFT36578	22/05/2014	BETA SOUVENIRS	SUPPLY OF VARIOUS MERCHANDISE FOR ZIG ZAG CULTURAL CENTRE	871.04
EFT36579	22/05/2014	NICOLE DAWSON	HALL BOND REFUND	50.00
EFT36580	22/05/2014	EYEZON PTY LTD (WHAT'S ON)	1/2 PAGE MONTHLY ADVERT FOR PERTH HILLS SPREAD	449.00
EFT36581	22/05/2014	DAVRIC AUSTRALIA	ASSORTED MERCHANDISE FOR THE ZIG ZAG CULTURAL CENTRE GIFT SHOP	611.00
EFT36582	22/05/2014	FOXTEL	MONTHLY SUBSCRIPTION	205.00
EFT36583	22/05/2014	MEERILINGA YOUNG CHILDREN'S SERVICES INC	TODDLER TUCKER PRESENTATION AT HIGH WYCOMBE LIBRARY	300.00
EFT36584	22/05/2014	GURUS ENTERTAINMENT & MANAGEMENT PTY LTD	ENTERTAINMENT - EMERGENCY SERVICES DINNER 2014	5500.00
EFT36585	22/05/2014	BELMONT NETBALL ASSOCIATION	KIDSPORT FUNDING FOR VARIOUS PLAYERS	180.00
EFT36586	22/05/2014	SAINT BRIGID'S NETBALL CLUB	KIDSPORT FUNDING FOR VARIOUS PLAYERS	400.00
EFT36587	22/05/2014	REDCLIFFE JUNIOR FOOTBALL CLUB	KIDSPORT FUNDING FOR VARIOUS PLAYERS	185.00
EFT36588	22/05/2014	MPJ (WA) PTY LTD	SUPERANNUATION CONTRIBUTIONS	504.78
EFT36589	22/05/2014	DANIELLE MEAGHER	FOOTPATH DEPOSIT REFUND	1200.00
EFT36590	22/05/2014	KALAMUNDA DISTRICTS RUGBY UNION CLUB	KIDSPORT FUNDING FOR VARIOUS PLAYERS	505.00
EFT36591	22/05/2014	RIDING FOR THE DISABLED ASSOC - SWAN VALLEY	KIDSPORT FUNDING FOR VARIOUS PLAYERS	200.00
EFT36592	22/05/2014	DMC CLEANING	CLEANING OF VARIOUS SHIRE BUILDINGS	330.00
EFT36593	22/05/2014	DAWOD JAVADI	PV SOLAR SYSTEM REBATE	2000.00
EFT36594	22/05/2014	MICHAELA GARDINER	HALL BOND REFUND	50.00
EFT36595	22/05/2014	MPK TREE SERVICES	TREE REMOVAL / BRANCH PRUNING AT VARIOUS LOCATIONS	20495.75

Chq/EFT	Date	Name	Description	Amount
EFT36596	22/05/2014	MAJOR MITCHELL PRODUCTIONS	GREG MITCHELL - PRESENTER AT KALAMUNDA CAREERS EXPO	1320.00
EFT36597	22/05/2014	WALTER & MAUREEN STALTARI	CROSSOVER CONTRIBUTION	385.00
EFT36598	22/05/2014	SWAN BALLROOM	HALL AND KEY BOND REFUND	350.00
EFT36599	22/05/2014	SCORPION TRAINING SOLUTIONS	REGISTRATION FOR 2 STAFF TO ATTEND INCIDENT INVESTIGATION TRAINING	2000.00
EFT36600	22/05/2014	WOBBLYJULES INVESTMENTS FUND	SUPERANNUATION CONTRIBUTIONS	212.84
EFT36601	22/05/2014	COBY CLANCY	FOOTPATH DEPOSIT REFUND	1200.00
EFT36602	22/05/2014	HONEY & LACE	HALL BOND REFUND	200.00
EFT36603	22/05/2014	ALLEASING PTY LTD	LEASING CONTRACT FOR THE IBM SAN - NETWORK STORAGE SOLUTION	24738.23
EFT36604	22/05/2014	FLEETCARE PTY LTD	STAFF CONTRIBUTIONS TO NOVATED LEASING	4139.62
EFT36605	22/05/2014	AUSTRALIAN CATHOLIC SUPERANNUATION & RETIREMENT FUND (ACSRF)	SUPERANNUATION CONTRIBUTIONS	234.60
EFT36606	22/05/2014	GOURMET COASTER	STAFF AND VOLUNTEER CATERING – RAMP IT UP 2014	182.00
EFT36607	22/05/2014	REDLINE (WA) PTY LTD	PROGRESS CLAIM AND VARIATION FOR THE CONSTRUCTION OF ABERNETHY ROAD SEWER MAIN	60677.91
EFT36608	22/05/2014	THE SULLIVAN SUPER FUND	SUPERANNUATION CONTRIBUTIONS	651.29
EFT36609	22/05/2014	PAUL AND KAYE MORO	ASSORTED MERCHANDISE FOR THE ZIG ZAG CULTURAL CENTRE GIFT SHOP	448.10
EFT36610	22/05/2014	RUTH STEPHENSON	SALE OF ARTWORK - CONNECTING COMMUNITIES EXHIBITION	196.00
EFT36611	22/05/2014	GRADY SWITHENBANK	ENTERTAINMENT - BIKE WEEK 2014	200.00
EFT36612	22/05/2014	ARCHIPELAGO ARTS - WEST END PROJECTS AUSTRALIA PTY LTD	ARTS ASSESSMENT & RECOMMENDATIONS FOR CULTURAL DEVELOPMENT PROJECT	1155.00

Chq/EFT	Date	Name	Description	Amount
EFT36613	22/05/2014	AUSTRALASIAN PLAYGROUNDS PTY LTD	PROGRESS PAYMENT - OUTDOOR PLAYGROUND EQUIPMENT FOR FLEMING RESERVE	8778.00
EFT36614	22/05/2014	ALLPIKE PEUGEOT CITROEN	SUPPLY OF 1 NEW VAN	26755.91
EFT36615	22/05/2014	RACHELLE CROTTY	PART REFUND DUE TO RELOCATION OF CLASS FROM HARTFIELD PARK RECREATION CENTRE TO HIGH WYCOMBE RECREATION CENTRE	49.00
EFT36616	22/05/2014	19TH PERTH (GOSNELLS) GIRLS BRIGADE	KIDSPORT FUNDING FOR VARIOUS PLAYERS	200.00
EFT36617	22/05/2014	SOUNDTOWN	LINE AUDIO CM3 CARDIOID CONDENSER MICROPHONE	716.00
EFT36618	22/05/2014	DARYL EAGLE	KEY BOND REFUND	50.00
EFT36619	22/05/2014	PAUL CAMERON	BOND REFUND FOR THE USE OF THE SEMINAR ROOM AT THE ZIG ZAG CULTURAL CENTRE	300.00
EFT36620	22/05/2014	PETER AND JUDY PETRUCCI	FOOTPATH DEPOSIT REFUND	1000.00
EFT36621	22/05/2014	PEAK CONSTRUCTION & DEVELOPMENTS PTY LTD	FOOTPATH DEPOSIT REFUND	2000.00
EFT36622	22/05/2014	SUMMIT LIGHTHOUSE	BOND REFUND FOR THE USE OF THE SEMINAR ROOM AT THE ZIG ZAG CULTURAL CENTRE	300.00
EFT36623	22/05/2014	CYCLEMANIA	KEY BOND REFUND	50.00
EFT36624	22/05/2014	DALY & SHAW BUILDING PTY LTD	FOOTPATH DEPOSIT REFUND	1000.00
EFT36625		EFT PAYMENT CANCELLED		
EFT36626	22/05/2014	EXTREME CHEER ALLSTARS	HALL AND KEY BOND REFUND	750.00
EFT36627	22/05/2014	TAYLOR BATES	KEY BOND REFUND	50.00
EFT36628	22/05/2014	RACHAEL SERCOMBE	KEY BOND REFUND	50.00
EFT36629	22/05/2014	MELISSA TOOMEY	KEY BOND REFUND	50.00
EFT36630	27/05/2014	HART SPORT	GYM EQUIPMENT SUPPLIES FOR HARTFIELD PARK RECREATION CENTRE	126.00
EFT36631	27/05/2014	STYLECORP CORPORATE WEAR	SUPPLY OF UNIFORM FOR VARIOUS STAFF MEMBERS	27.47

Chq/EFT	Date	Name	Description	Amount
EFT36632	27/05/2014	SHAWMAC PTY LTD	STRATEGIC ADVICE AND REVIEW OF CLOSURE OF TIER 3 BULK GRAIN RAIL NETWORKS	1980.00
EFT36633	27/05/2014	VISION IDZ	OFFICE EQUIPMENT / SUPPLIES	88.00
EFT36634	27/05/2014	NESTLE AUSTRALIA LTD (MUSASHI)	KIOSK SUPPLIES FOR HARTFIELD PARK	367.90
EFT36635	27/05/2014	DVA FABRICATIONS	LIBRARY SUPPLIES	516.00
EFT36636	27/05/2014	WILEY AIR TRANSPORT SERVICES & HIGHLAND EXPRESS	COURIER SERVICES TO COUNCILLORS	86.90
EFT36637	27/05/2014	12D SOLUTIONS PTY LTD	ANNUAL MAINTENANCE OF 12D CIVIL DESIGN SOFTWARE	1980.00
EFT36638	27/05/2014	MYATTSFIELD VINEYARD & WINERY	WINE SUPPLIES	327.60
EFT36639	27/05/2014	PAPER-PAK PTY LTD	LIBRARY STATIONERY SUPPLIES	1375.00
EFT36640	27/05/2014	SHERICH BUILDING SURVEYING & BUILDING SERVICES	BUILDING SURVEYING SERVICES FOR CONDITION AND COMPLIANCE ASSESSMENT REPORT FOR THE SCOUT HALL AT 199 HALE ROAD FORRESTFIELD	3278.00
EFT36641	27/05/2014	THE PLANNING GROUP WA PTY LTD	PROFESSIONAL SERVICES - FORRESTFIELD INDUSTRIAL AREA STAGE 3	1056.00
EFT36642	27/05/2014	VE GRAPHICS PTY LTD	SUPPLY OF BANNERS FOR VARIOUS LOCATIONS	1716.00
EFT36643	27/05/2014	WATS MANAGEMENT PTY LTD T/A AUSTRAFFIC WA	TRAFFIC COUNTS CLASSIFICATION OF FOUR LOCATIONS	957.00
EFT36644	27/05/2014	BUNNINGS BUILDING SUPPLIES	HARDWARE SUPPLIES FOR VARIOUS LOCATIONS	3424.26
EFT36645	27/05/2014	LANDGATE	LAND ENQUIRIES FOR VARIOUS LOCATIONS	384.00
EFT36646	27/05/2014	STATE LIBRARY OF W.A.	LOST AND DAMAGED BOOKS AT VARIOUS LIBRARIES	2127.40
EFT36647	27/05/2014	ECHO NEWSPAPER	ADVERTISING FOR VARIOUS JOBS / EVENTS	1700.00
EFT36648	27/05/2014	EASTERN METROPOLITAN REGIONAL COUNCIL	DOMESTIC / WASTE CHARGES - RED HILL TIP AND MATTRESS DISPOSAL FEES	297430.28
EFT36649	27/05/2014	BORAL CONSTRUCTION MATERIALS GROUP	ROAD MATERIALS FOR VARIOUS LOCATIONS	2446.13

Chq/EFT	Date	Name	Description	Amount
EFT36650	27/05/2014	RAECO	STATIONERY / OFFICE SUPPLIES	367.35
EFT36651	27/05/2014	MCINTOSH & SON	PLANT / VEHICLE PARTS	125.86
EFT36652	27/05/2014	SONIC HEALTHPLUS (KINETIC HEALTH GROUP LTD)	PREPLACEMENT MEDICALS / BASELINE HEARING TESTS	937.20
EFT36653	27/05/2014	ALSCO LINEN SERVICE	LINEN HIRE / LAUNDRY SERVICES	1207.79
EFT36654	27/05/2014	ACTIMED AUSTRALIA PTY LTD	MEDICAL SUPPLIES FOR PODIATRIST	513.40
EFT36655	27/05/2014	BGC ASPHALT	ROAD MATERIALS FOR VARIOUS LOCATIONS	2338.45
EFT36656	27/05/2014	WESTBOOKS	LIBRARY SUPPLIES	487.95
EFT36657	27/05/2014	WA LIMESTONE COMPANY	ROAD MATERIALS FOR VARIOUS LOCATIONS	553.88
EFT36658	27/05/2014	STAPLES AUSTRALIA PTY LTD(CORPORATE EXPRESS AUSTRALIA LTD)	STATIONERY / OFFICE SUPPLIES	902.07
EFT36659	27/05/2014	BLADON WA PTY LTD	MEMORABILIA SUPPLIES	2534.40
EFT36660	27/05/2014	FULTON HOGAN INDUSTRIES PTY LTD	ROAD MATERIALS FOR VARIOUS LOCATIONS	8111.37
EFT36661	27/05/2014	IT VISION	TECHNICAL SERVICES, INCLUDE REMOTE ASSISTANCE AND REFRESH PLAY ACCOUNT	550.00
EFT36662	27/05/2014	MACDONALD JOHNSTON ENGINEERING	PLANT / VEHICLE PARTS	875.40
EFT36663	27/05/2014	BRIDGESTONE AUSTRALIA LTD	PLANT / VEHICLE PARTS	1330.37
EFT36664	27/05/2014	WORK CLOBBER (MIDLAND)	PROTECTIVE CLOTHING SUPPLIES	1219.60
EFT36665	27/05/2014	CITY OF SWAN	REIMBURSEMENT OF LONG SERVICE LEAVE FOR BRIAN BLECHYDEN	4783.99
EFT36666	27/05/2014	J BLACKWOOD & SON LIMITED	PROTECTIVE WEAR / SUPPLIES	2386.60
EFT36667	27/05/2014	EASTERN HILLS SAWS AND MOWERS	PLANT / VEHICLE PARTS	2916.00
EFT36668	27/05/2014	JR & A HERSEY PTY LTD	HARDWARE SUPPLIES	529.43
EFT36669	27/05/2014	BIBBULMUN TRACK FOUNDATION	WILDFLOWERS OF THE BIBBULMUN TRACK	1125.00
EFT36670	27/05/2014	LANDMARK OPERATIONS LTD	SUPPLY OF BOLLARDS	2602.60
EFT36671	27/05/2014	THE HONDA SHOP	PLANT / VEHICLE PARTS	160.70
EFT36672	27/05/2014	SHIRE OF MUNDARING	REIMBURSEMENT TO THE SHIRE OF MUNDARING FOR ADVERTISING IN THE WINTER BREAKS MAGAZINE	742.50

Chq/EFT	Date	Name	Description	Amount
EFT36673	27/05/2014	TOTAL EDEN PTY LTD	PART PAYMENT - SUPPLY AND INSTALL NEW RETICULATION AT DAVIES PARK MAIDA VALE	47147.10
EFT36674	27/05/2014	BAILEYS FERTILISERS	GARDEN / RESERVE SUPPLIES	664.73
EFT36675	27/05/2014	AABEL LINE MARKING	LINE MARKING FOR VARIOUS LOCATIONS	4557.96
EFT36676	27/05/2014	GRASSTREES AUSTRALIA	GARDEN AND VERGE SUPPLIES	2139.50
EFT36677	27/05/2014	DIGITAL MAPPING SOLUTIONS	GIS CONSULTING SERVICES - SUPPORT AND MENTORING	22792.00
EFT36678	27/05/2014	GHD PTY LTD	PROGRESS PAYMENT - PREPARE DESIGN AND APPROVALS FOR ROUNDABOUT AND NEW ROAD CONSTRUCTION FOR HALE RD / ARTHUR ROADS	11002.20
EFT36679	27/05/2014	LANEWAY CONSTRUCTION	CONSTRUCTION OF A UNIVERSAL ACCESS COMPLIANT TOILET FACILITY AT BILL SHAW RESERVE	42129.12
EFT36680	27/05/2014	SCITECH DISCOVERY CENTRE	SCIENCE ROAD SHOWS AT VARIOUS LOCATIONS	2270.00
EFT36681	27/05/2014	B & J CATALANO PTY LTD	ROAD MATERIALS FOR VARIOUS LOCATIONS	13347.00
EFT36682	27/05/2014	ANALYTICAL REFERENCE LABORATORIES	ASBESTOS SAMPLE TESTING	211.75
EFT36683	27/05/2014	GYMCARE	GYM EQUIPMENT REPAIRS / MAINTENANCE	150.15
EFT36684	27/05/2014	QUICK CORPORATE AUST PTY LTD	STATIONERY & OFFICE SUPPLIES	6721.61
EFT36685	27/05/2014	COMMUNITY NEWSPAPER GROUP LTD	ADVERTISING FOR VARIOUS JOBS AND EVENTS	2312.38
EFT36686	27/05/2014	KANYANA WILDLIFE REHABILITATION CENTRE INC	HALL BOND REFUND AND PARTIAL REIMBURSEMENT OF COST OF TREE LOPPING SERVICES	611.95
EFT36687	27/05/2014	WREN OIL	WASTE OIL RECYCLING - DISPOSAL FEES	242.00
EFT36688	27/05/2014	ACES (ANIMAL CARE EQUIPMENT & SERVICES P/L)	ANIMAL HANDLING EQUIPMENT SUPPLIES	64.79
EFT36689	27/05/2014	DRIVE STRAIGHT	PLANT / VEHICLE PARTS	181.50
EFT36690	27/05/2014	PRIME CORPORATE PSYCHOLOGY SERVICES P/L	EMPLOYEE ASSISTANCE PROGRAMME	253.00
EFT36691	27/05/2014	LOCK, STOCK & FARRELL LOCKSMITH PTY LTD	PADLOCKS / KEYS SUPPLIES	1866.45

Chq/EFT	Date	Name	Description	Amount
EFT36692	27/05/2014	ARTSOURCE	ADVERTISING - AUTUMN 2014 NEWSLETTER	260.00
EFT36693	27/05/2014	OPUS INTERNATIONAL CONSULTANTS (PCA) LIMITED	PROFESSIONAL SERVICES - RELOCATION OF SEWER - ABERNETHY ROAD	3599.15
EFT36694	27/05/2014	COCA-COLA AMATIL (AUST) PTY LTD	KIOSK SUPPLIES FOR HARTFIELD RECREATION CENTRE	495.20
EFT36695	27/05/2014	G FORCE PRINTING	SUPPLY OF PRINTED STATIONERY STOCK	308.99
EFT36696	27/05/2014	MIRACLE RECREATION EQUIPMENT	SUPPLY AND INSTALL DOUBLE SWING AND REMOVAL OF OLD EQUIPMENT FOR THE PLAYGROUND RENEWAL PROGRAM	3740.00
EFT36697	27/05/2014	HYDROQUIP PUMPS	MAINTENANCE/REPAIR OF PUMP FOR DAVIES PARK	10010.00
EFT36698	27/05/2014	DIRECT TRADES SUPPLY PTY LTD	HARDWARE SUPPLIES	811.25
EFT36699	27/05/2014	TRANEN REVEGETATION SYSTEMS	SEED COLLECTION SERVICES AND PROCESSING AT LOWER LESMURDIE FALLS	1089.00
EFT36700	27/05/2014	THE POOL TABLE MAN	TRANSPORT POOL TABLE SLATE TO PETER ANDERTON CENTRE AND ASSEMBLE AND LEVEL	310.00
EFT36701	27/05/2014	OFFICEWORKS SUPERSTORES PTY LTD	OFFICE SUPPLIES / STATIONARY	69.00
EFT36702	27/05/2014	AUSTREND INTERNATIONAL PTY LTD	ROAD SAFETY AND TRAFFIC CONTROL PRODUCTS	1468.50
EFT36703	27/05/2014	WESTRAC PTY LTD	PLANT / VEHICLE PARTS	139.60
EFT36704	27/05/2014	WA NATURALLY PUBLICATIONS/DEPARTMENT OF ENVIRONMENT & CONSERVATION	MERCHANDISE SUPPLIES FOR THE ZIG ZAG CULTURAL CENTRE	182.34
EFT36705	27/05/2014	M2 TECHNOLOGY	MESSAGING SERVICES FOR HARTFIELD PARK RECREATION CENTRE	389.99
EFT36706	27/05/2014	PORTER CONSULTING ENGINEERS	ENGINEERING CONSULTING SERVICES - ROAD WIDENING & ENHANCEMENT AT HALE ROAD WATTLE GROVE	19272.00
EFT36707	27/05/2014	BGC CEMENT BAGGED PRODUCTS	ROAD MATERIALS SUPPLIES	1231.56
EFT36708	27/05/2014	INSIGHT CCS PTY LTD	AFTER HOURS ANSWERING SERVICES	2490.14

Chq/EFT	Date	Name	Description	Amount
EFT36709	27/05/2014	SNAP PRINTING - MIDLAND	BUSINESS CARDS FOR VARIOUS STAFF	1152.00
EFT36710	27/05/2014	GREAT AUSSIE PATIOS	PATIO INSTALLATION - REID OVAL PAVILION AND ROOF COVER REPLACEMENT - CARILLA CAMPING GROUND	10200.00
EFT36711	27/05/2014	NATSYNCR ENVIRONMENTAL	2 NIGHT STALK AT KALARI POS	760.00
EFT36712	27/05/2014	HUMES	DRAINAGE SUPPLIES FOR VARIOUS LOCATIONS	23403.93
EFT36713	27/05/2014	ROAD SIGNS AUSTRALIA (ALLPACK SIGNS)	TRAFFIC PROTECTION PRODUCTS / SIGNAGE	1520.20
EFT36714	27/05/2014	KLEEN WEST DISTRIBUTORS	SUPPLY OF CLEANING FLUID	493.90
EFT36715	27/05/2014	MULTILEC ENGINEERING	QUARTERLY SERVICING & TESTING OF LIFTS AT VARIOUS LOCATIONS	1650.00
EFT36716	27/05/2014	HOLCIM AUSTRALIA PTY LTD	ROAD MATERIALS FOR VARIOUS LOCATIONS	682.95
EFT36717	27/05/2014	MOWMASTER TURF EQUIPMENT	PLANT / VEHICLE PARTS	2897.05
EFT36718	27/05/2014	WEST COAST PROFILERS PTY LTD	SUPPLY AND LAYING OF ASPHALT AND PROFILING AT VARIOUS LOCATIONS	6778.35
EFT36719	27/05/2014	TRUCK CENTRE WA PTY LTD	PLANT / VEHICLE PARTS	348.78
EFT36720	27/05/2014	POSITION PARTNERS PTY LTD	SUPPLY OF A HIGH PERFORMANCE PRECISION PIPE AND CABLE LOCATOR	5280.00
EFT36721	27/05/2014	DAVID GRAY & CO PTY LTD	WHEELIE RUBBISH BIN SUPPLIES	1988.84
EFT36722	27/05/2014	ACCESS OFFICE INDUSTRIES	LIBRARY SUPPLIES	943.69
EFT36723	27/05/2014	KENNARDS TRAFFIC MANAGEMENT WA	HIRE OF MESSAGE BOARDS	1974.00
EFT36724	27/05/2014	REINOL WA	PLANT / VEHICLE PARTS	177.54
EFT36725	27/05/2014	FUJI XEROX AUSTRALIA PTY LTD	PHOTOCOPYING CHARGES	1096.65
EFT36726	27/05/2014	STAR DATA PTY LTD	MONTHLY MAINTENANCE AGREEMENT	1246.09
EFT36727	27/05/2014	VICTORIA PHYSIOTHERAPY GROUP	PHYSICAL CAPACITIES ASSESSMENT - ACTIVITIES OFFICER AT THE PETER ANDERTON ADULT DAY CENTRE	137.50

Chq/EFT	Date	Name	Description	Amount
EFT36728	27/05/2014	STRATEGEN ENVIRONMENTAL CONSULTANTS	WILKINS ROAD ADDITIONAL VARIATION, MOIRA AVE WATER MONITORING AND HILLS RURAL FIRE STUDY	1955.25
EFT36729	27/05/2014	ORORA LTD	COLLECTION OF CARDBOARD FROM WALLISTON TRANSFER STATION	347.60
EFT36730	27/05/2014	DYMOCKS MIDLAND GATE	LIBRARY SUPPLIES	282.08
EFT36731	27/05/2014	SAFE T CARD AUSTRALIA PTY LTD	MONTHLY MONITORING CHARGES FOR VARIOUS LOCATIONS	99.00
EFT36732	27/05/2014	DAIMLER TRUCKS PERTH	PLANT / VEHICLE PARTS	507.81
EFT36733	27/05/2014	PETROL PUMP REPAIRS PTY LTD	PETROL PUMP REPAIRS DEPOT OPERATIONS	112.53
EFT36734	27/05/2014	ELECTRICAL TEST TAG & INSPECTION SERVICES (ETTIS)	ANNUAL TAGGING AND TESTING OF ELECTIRICAL APPLIANCES AT VARIOUS LOCATIONS	3541.67
EFT36735	27/05/2014	SUPER AMART MIDLAND	FURNITURE SUPPLIES FOR JACK HEALEY CENTRE	537.95
EFT36736	27/05/2014	EXECUTIVE MEDIA PTY LTD	ADVERTISING IN CARAVANNING AUSTRALIA, WINTER 2014	350.00
EFT36737	27/05/2014	TOTAL GREEN RECYCLING	RECYCLING OF ELECTRICAL APPLIANCES EWASTE	2098.62
EFT36738	27/05/2014	DAWOD JAVADI	SHORT PAID IN INITIAL CLAIM - PV SOLAR SYSTEM REBATE LOT 907 MARRIOT CRESCENT	1000.00
EFT36739	27/05/2014	ELAN ENERGY MANAGEMENT	PICK UP TYRES	1361.88
EFT36740	27/05/2014	KJERSTIN BJELLAND	MONTHLY RENTAL OF LOTS 918 & 919 MONARCH WAY WATTLE GROVE AND WATER ACCOUNT	3227.67
EFT36741	27/05/2014	MPK TREE SERVICES	TREE REMOVAL / BRANCH PRUNING AT VARIOUS LOCATIONS	1184.25
EFT36742	27/05/2014	TURFWORKS WA PTY LTD	RESERVE MOWING AT VARIOUS LOCATIONS	9121.90
EFT36743	27/05/2014	MIDLAND PLASTERBOARD	SUPPLY PLASTERBOARD AND BUILDING SUPPLIES TO VARIOUS LOCATIONS	996.16

Chq/EFT	Date	Name	Description	Amount
EFT36744	27/05/2014	DENISON WA PTY LTD	COLLECTION AND RETURN OF HOOK LIFT BINS FROM WALLISTON TRANSFER STATION	16087.50
EFT36745	27/05/2014	HUMMINGBIRD ELECTRONICS PTY LTD	ELECTRONIC PARTS FOR VEHICLES - GPS TRIP METER	1663.97
EFT36746	27/05/2014	THE NEW BEAN ON THE BLOCK	SUPPLY OF HOT BEVERAGES - CAREERS EXPO	158.00
EFT36747	27/05/2014	ENVIRO SWEEP	FOOTPATH / CARPARK SWEEPING SERVICES AT VARIOUS LOCATIONS	59581.51
EFT36748	27/05/2014	PERTH WASTE PTY LTD	WEEKLY COLLECTION OF WASTE/RECYCLING SERVICES	269730.31
EFT36749	27/05/2014	FORT KNOX RECORDS MANAGEMENT	OFFSITE STORAGE OF RECORDS	184.14
EFT36750	27/05/2014	DEEP GREEN LANDSCAPING PTY LTD	SUPPLY AND INSTALL 6 VERTICAL GARDENS IN THE TOWN MALL	11255.97
EFT36751	27/05/2014	ESSENTIAL ENVIRONMENTAL	HYDROLOGEN STUDY FOR WOODLUPINE CREEK WITHIN THE FORRESTFIELD DISTRICT AREA	12386.00
EFT36752	27/05/2014	BLACK BOX CONTROL PTY LTD	BLACK BOX TRACKING SYSTEM FOR OPERATIONS CENTRE	660.00
EFT36753	27/05/2014	DS AGENCIES PTY LTD	SUPPLY OF BIKE STATION AND BIKE SEAT	1325.50
EFT36754	27/05/2014	DAYTONE PRINTING PTY LTD	BROCHURE PRINTING AND DELIVERY FEE	938.30
EFT36755	27/05/2014	ECOCYCLE AUSTRALIA PTY LTD	RECYCLING OF FLURO TUBES AND GLOBES	1336.79
EFT36756	27/05/2014	CENTRECOURT RENOVATORS	RENOVATE EXISTING COURT SURFACE AT THE BILL SHAW RESERVE	4840.00
EFT36757	27/05/2014	DAVIDSON TRAHAIRE CORPSYCH	EMPLOYEE ASSITANCE PROGRAMME	506.00
EFT36758	27/05/2014	ROSSMOYNE COMMUNITY SINGERS INC	PERFORMANCE BY 'STRIKE-A-CHORD' FOR MARCH MORNING MUSIC	900.00
EFT36759	27/05/2014	ALLAN MORTON	COUNCILLOR ALLOWANCE - 23/05/14 - 27/06/14 & BACKPAY FROM FIRST QUARTER	3439.41
EFT36760	27/05/2014	JOHN GIARDINA	COUNCILLOR ALLOWANCE - 23/05/14 - 27/06/14 & BACKPAY FROM FIRST QUARTER	5458.65

Chq/EFT	Date	Name	Description	Amount
EFT36761	27/05/2014	GEOFF STALLARD	COUNCILLOR ALLOWANCE - 23/05/14 - 27/06/14 & BACKPAY FROM FIRST QUARTER	3439.43
EFT36762	27/05/2014	IAN JUSTIN WHITTEN	COUNCILLOR ALLOWANCE - 23/05/14 - 27/06/14 & BACKPAY FROM FIRST QUARTER	3439.43
EFT36763	27/05/2014	SUSAN BILICH	COUNCILLOR ALLOWANCE - 23/05/14 - 27/06/14 & BACKPAY FROM FIRST QUARTER	12525.97
EFT36764	27/05/2014	MARGARET THOMAS	COUNCILLOR ALLOWANCE - 23/05/14 - 27/06/14 & BACKPAY FROM FIRST QUARTER	3439.43
EFT36765	27/05/2014	NOREEN TOWNSEND	COUNCILLOR ALLOWANCE - 23/05/14 - 27/06/14 & BACKPAY FROM FIRST QUARTER	3439.43
EFT36766	27/05/2014	FRANK LINDSEY	COUNCILLOR ALLOWANCE - 23/05/14 - 27/06/14 & BACKPAY FROM FIRST QUARTER	3439.43
EFT36767	27/05/2014	SIMON DI ROSSO	COUNCILLOR ALLOWANCE - 23/05/14 - 27/06/14 & BACKPAY FROM FIRST QUARTER	3439.43
EFT36768	27/05/2014	ANDREW WADDELL	COUNCILLOR ALLOWANCE - 23/05/14 - 27/06/14 & BACKPAY FROM FIRST QUARTER	3439.57
EFT36769	27/05/2014	DYLAN O'CONNOR	COUNCILLOR ALLOWANCE - 23/05/14 - 27/06/14 & BACKPAY FROM FIRST QUARTER	3439.43
EFT36770	27/05/2014	ROBERT EMERY	COUNCILLOR ALLOWANCE - 23/05/14 - 27/06/14 & BACKPAY FROM FIRST QUARTER	3439.43
67703	07/05/2014	HOSPITAL BENEFIT FUND OF WA	PAYROLL DEDUCTIONS	379.40
67704	07/05/2014	AUSTRALIAN SERVICES UNION	PAYROLL DEDUCTIONS	195.52
67705	07/05/2014	MUNICIPAL EMPLOYEES UNION	PAYROLL DEDUCTIONS	601.40
67706	07/05/2014	TELSTRA CORPORATION	TELEPHONE EXPENSES	5632.50
67707	07/05/2014	WATER CORPORATION	WATER USE AND SERVICE CHARGE FEES	20864.70
67708	07/05/2014	BCITF	LEVY FEE - APRIL 2014	27037.54
67709	07/05/2014	SYNERGY	POWER CHARGES	36021.65
67710	07/05/2014	ALINTA ENERGY	GAS CHARGES	297.55
67711	07/05/2014	BUILDING COMMISSION	BUILDING LEVY - APRIL 2014	10321.04

Chq/EFT	Date	Name	Description	Amount
67712	07/05/2014	CASH - KALAMUNDA LIBRARY	PETTY CASH REIMBURSEMENT	110.60
67713	07/05/2014	WESTSCHEME SUPERANNUATION	SUPERANNUATION CONTRIBUTIONS	587.63
67714	07/05/2014	REST SUPERANNUATION	SUPERANNUATION CONTRIBUTIONS	1434.73
67715	07/05/2014	AMP RETIREMENT SAVINGS ACCOUNT	SUPERANNUATION CONTRIBUTIONS	245.86
67716	07/05/2014	CBUS SUPERANNUATION	SUPERANNUATION CONTRIBUTIONS	200.52
67717	07/05/2014	COGNET NOMINEES PTY LTD ACF MAP SUPER FUND	SUPERANNUATION CONTRIBUTIONS	93.39
67718	07/05/2014	COLONIAL 1ST STATE SUPERANNUATION	SUPERANNUATION CONTRIBUTIONS	847.66
67719	07/05/2014	HESTA SUPER FUND	SUPERANNUATION CONTRIBUTIONS	791.13
67720	07/05/2014	AMPLIFE LIMITED	SUPERANNUATION CONTRIBUTIONS	110.25
67721	07/05/2014	CASH - MEALS ON WHEELS	PETTY CASH REIMBURSEMENT	479.00
67722	07/05/2014	CASH - KALAMUNDA HACC	PETTY CASH REIMBURSEMENT	283.60
67723	07/05/2014	ANZ SUPER ADVANTAGE	SUPERANNUATION CONTRIBUTIONS	373.09
67724	07/05/2014	AMP SUPER LEADER	SUPERANNUATION CONTRIBUTIONS	105.67
67725	07/05/2014	ING INTEGRA PERSONAL SUPER	SUPERANNUATION CONTRIBUTIONS	110.98
67726	07/05/2014	HOSTPLUS PTY LTD	SUPERANNUATION CONTRIBUTIONS	207.72
67727	07/05/2014	AUSTRALIAN RETIREMENT FUND - ARF ADMINISTRATION	SUPERANNUATION CONTRIBUTIONS	156.78
67728	07/05/2014	COMMONWEALTH SUPERSELECT	SUPERANNUATION CONTRIBUTIONS	153.56
67729	07/05/2014	CASH - ZIG ZAG CULTURAL CENTRE	PETTY CASH REIMBURSEMENT	55.30
67730	07/05/2014	MACQUARIE WRAP	SUPERANNUATION CONTRIBUTIONS	716.42
67731	07/05/2014	WATER CORPORATION SUPERANNUATION PLAN	SUPERANNUATION CONTRIBUTIONS	238.67
67732	07/05/2014	TWU SUPERANNUATION FUND	SUPERANNUATION CONTRIBUTIONS	293.91
67733	07/05/2014	ONEPATH MASTERFUND	SUPERANNUATION CONTRIBUTIONS	196.50
67734	07/05/2014	ULTIMATE SUPERANNUATION SERVICE	SUPERANNUATION CONTRIBUTIONS	405.69
67735	07/05/2014	KINETIC SUPERANNUATION LTD	SUPERANNUATION CONTRIBUTIONS	248.28
67736	07/05/2014	BT SUPER FOR LIFE	SUPERANNUATION CONTRIBUTIONS	250.65
67737	21/05/2014	HOSPITAL BENEFIT FUND OF WA	PAYROLL DEDUCTIONS	379.40

Chq/EFT	Date	Name	Description	Amount
67738	21/05/2014	AUSTRALIAN SERVICES UNION	PAYROLL DEDUCTIONS	195.52
67739	21/05/2014	MUNICIPAL EMPLOYEES UNION	PAYROLL DEDUCTIONS	640.20
67740	21/05/2014	TELSTRA CORPORATION	TELEPHONE EXPENSES	16366.92
67741	21/05/2014	WATER CORPORATION	WATER USE AND SERVICE CHARGE FEES	8674.37
67742	21/05/2014	SYNERGY	POWER CHARGES	128734.95
67743	21/05/2014	ALINTA ENERGY	GAS CHARGES	1746.70
67744	21/05/2014	DIRECTOR OF LICENSING SERVICES	LOCAL AUTHORITY SERIES NUMBER PLATES	600.00
67745	21/05/2014	CASH - FORRESTFIELD LIBRARY	PETTY CASH REIMBURSEMENT	124.00
67746	21/05/2014	CASH - HARTFIELD PARK	PETTY CASH REIMBURSEMENT	207.25
67747	21/05/2014	WESTSCHEME SUPERANNUATION	SUPERANNUATION CONTRIBUTIONS	661.18
67748	21/05/2014	REST SUPERANNUATION	SUPERANNUATION CONTRIBUTIONS	1559.72
67749	21/05/2014	AMP RETIREMENT SAVINGS ACCOUNT	SUPERANNUATION CONTRIBUTIONS	238.34
67750	21/05/2014	CBUS SUPERANNUATION	SUPERANNUATION CONTRIBUTIONS	200.52
67751	21/05/2014	COGNET NOMINEES PTY LTD ACF MAP SUPER FUND	SUPERANNUATION CONTRIBUTIONS	92.74
67752	21/05/2014	COLONIAL 1ST STATE SUPERANNUATION	SUPERANNUATION CONTRIBUTIONS	847.01
67753	21/05/2014	HESTA SUPER FUND	SUPERANNUATION CONTRIBUTIONS	867.72
67754	21/05/2014	AMPLIFE LIMITED	SUPERANNUATION CONTRIBUTIONS	109.60
67755	21/05/2014	CASH - MEALS ON WHEELS	PETTY CASH REIMBURSEMENT	428.55
67756	21/05/2014	CASH - KALAMUNDA HACC	PETTY CASH REIMBURSEMENT	467.75
67757	21/05/2014	ANZ SUPER ADVANTAGE	SUPERANNUATION CONTRIBUTIONS	204.57
67758	21/05/2014	AMP SUPER LEADER	SUPERANNUATION CONTRIBUTIONS	116.31
67759	21/05/2014	CASH - HIGH WYCOMBE LIBRARY	PETTY CASH REIMBURSEMENT	122.55
67760	21/05/2014	ING INTEGRA PERSONAL SUPER	SUPERANNUATION CONTRIBUTIONS	84.39
67761	21/05/2014	HOSTPLUS PTY LTD	SUPERANNUATION CONTRIBUTIONS	115.09
67762	21/05/2014	AUSTRALIAN RETIREMENT FUND - ARF ADMINISTRATION	SUPERANNUATION CONTRIBUTIONS	163.92
67763	21/05/2014	COMMONWEALTH SUPERSELECT	SUPERANNUATION CONTRIBUTIONS	209.81
67764	21/05/2014	MACQUARIE WRAP	SUPERANNUATION CONTRIBUTIONS	618.73

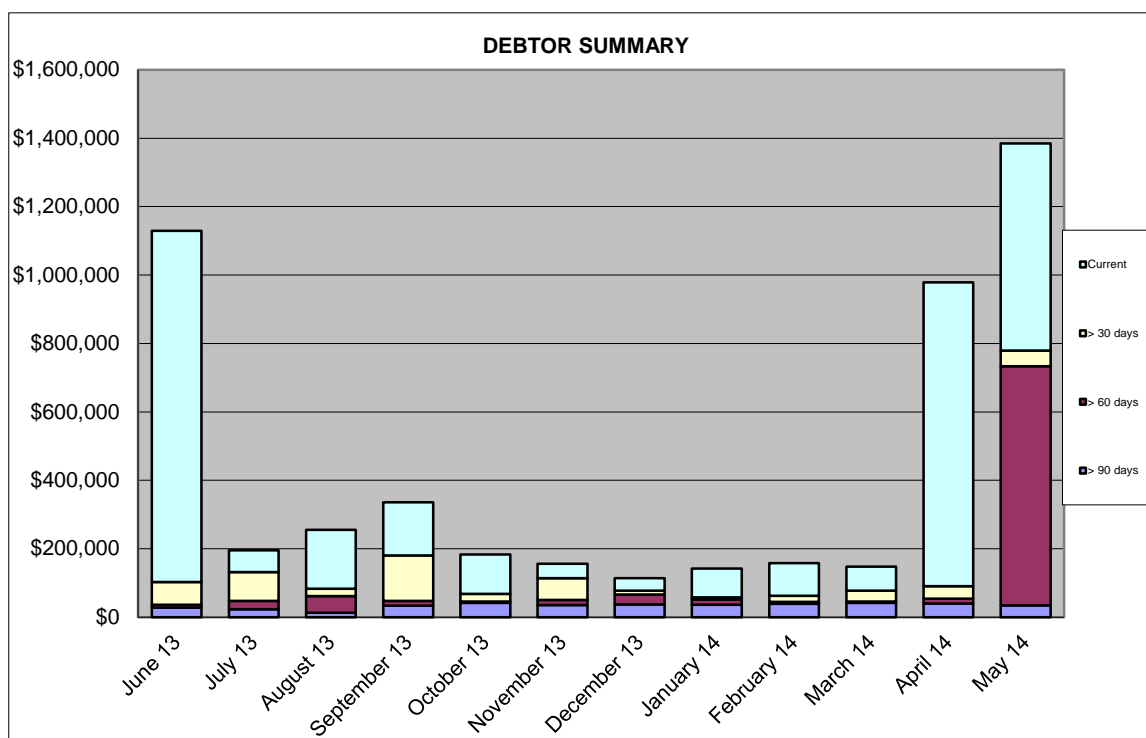
Chq/EFT	Date	Name	Description	Amount
67765	21/05/2014	WATER CORPORATION SUPERANNUATION PLAN	SUPERANNUATION CONTRIBUTIONS	238.67
67766	21/05/2014	OLIVIA DAVISON	FIRST PRIZE FOR BANNERS IN THE TERRACE DESIGN COMPETITION 2014	175.00
67767	21/05/2014	TWU SUPERANNUATION FUND	SUPERANNUATION CONTRIBUTIONS	198.55
67768	21/05/2014	ONEPATH MASTERFUND	SUPERANNUATION CONTRIBUTIONS	196.50
67769	21/05/2014	ULTIMATE SUPERANNUATION SERVICE	SUPERANNUATION CONTRIBUTIONS	244.92
67770	21/05/2014	KINETIC SUPERANNUATION LTD	SUPERANNUATION CONTRIBUTIONS	189.57
67771	21/05/2014	BT SUPER FOR LIFE	SUPERANNUATION CONTRIBUTIONS	250.65
67772	21/05/2014	MEOKI MORALLO	SECOND PRIZE FOR BANNERS IN THE TERRACE DESIGN COMPETITION 2014	70.00
67773	21/05/2014	CHARLOTTE EDEN	THIRD PRIZE FOR BANNERS IN THE TERRACE DESIGN COMPETITION 2014	70.00
67774	21/05/2014	WAYNE & MARIE LLOYD	REFUND OF FOOD BUSINESS APPLICATION AS ALREADY REGISTERED WITH THE CITY OF CANNING	62.00
67775	26/05/2014	CITY OF SOUTH PERTH	GARDEN / VERGE SUPPLIES	570.75
				3402145.33

Attachment 2

SHIRE OF KALAMUNDA SUMMARY OF DEBTORS FOR THE PERIOD ENDED 31st May 2014

Sundry Debtors Trial Balance - Summary Aged Listing

	> 90 days	> 60 days	> 30 days	Current	Total
June 13	\$27,854	\$8,275	\$66,371	\$1,026,898	\$1,129,399
July 13	\$22,971	\$24,180	\$84,188	\$63,956	\$195,295
August 13	\$12,386	\$48,665	\$21,521	\$172,620	\$255,193
September 13	\$33,547	\$13,845	\$132,820	\$155,054	\$335,266
October 13	\$41,669	\$3,852	\$22,138	\$115,581	\$183,240
November 13	\$35,402	\$14,890	\$63,761	\$41,601	\$155,654
December 13	\$36,884	\$28,991	\$11,194	\$36,916	\$113,986
January 14	\$35,901	\$15,076	\$6,820	\$83,752	\$141,548
February 14	\$39,263	\$5,669	\$17,441	\$95,509	\$157,881
March 14	\$42,207	\$3,249	\$31,796	\$70,204	\$147,456
April 14	\$39,669	\$14,103	\$37,186	\$887,621	\$978,580
May 14	\$34,154	\$698,845	\$46,507	\$605,206	\$1,384,712



SHIRE OF KALAMUNDA
SUMMARY OF DEBTORS
FOR THE PERIOD ENDED 31st May 2014

AMOUNT	DEBTOR	DETAILS	STATUS
>90 days			
\$4,123.97	Forrestfield United Soccer Club ^	Loan 214	Direct Debit commenced 01/05/14 - \$600 per f/n to increase in October.
\$1,751.09	Kalamunda Cricket Club	Operational Expenses Pat Moran Pavilion	Club has requested additional time to pay invoices.
\$24,000.00	Lesmurdie Tennis Club Inc. *	Contribution to Extension	The Shire is monitoring - 2 instalment payments made.
\$2,791.07	Western Power *	Private Works - repair to damaged storm water pipes	Western Power have requested additional information regarding the private works. They had overlooked this invoice.
\$1,487.49	90+ Days Debts consisting of amounts under \$1,000.00.		Debtors to be contacted to advise debt recovery action pending / final notices issued or debt with D&B.
\$34,153.62	Total Debts 90+ Days		
>60 days			
\$693,689.21	Design Management Group	Developer Contribution - Industrial Area	Company due to pay 30/05 - Business Unit contacting Company 03/06
\$1,151.76	Kalamunda Cricket Club	Operational Expenses Pat Moran Pavilion	Club has requested additional time to pay invoices.
\$1,953.22	Public Transport Authority	Private Works - Installation of light.	Confirmed with contact at PTA that invoice is to be processed

\$1,835.63	Zig Zag Café Kalamunda	Lease / Operational Expenses	Debtor committed to pay fortnightly instalments.
\$215.20	60+ Days Debts consisting of amounts under \$1,000.00.		All debtors to be contacted by telephone / email - copy invoices mailed as required.
\$698,845.02	Total Debts 60+ Days		
>30 days			
\$1,351.50	Early Bird Learning	Hall Hire	Reminder invoices to be sent.
\$1,008.00	High Wycombe Cricket Club	Refuse Collection 13/14	Reminder invoices to be sent.
\$1,394.25	Hills District Callisthenics	Hall Hire	Reminder invoices to be sent.
\$1,218.00	Jolettes Gymnastics	Hall Hire	Reminder invoices to be sent.
\$2,826.94	Kalamunda & Districts Basketball	Operational Expenses	Club has been contacted to confirm when payment will be made.
\$2,310.00	Kalamunda & Districts Rugby League	Utilities/Annual Hire/Refuse Collection	Club has requested additional time to pay invoices / part payment received
\$6,510.00	Chamber of Commerce	Annual Rent / Membership	Reminder invoices to be sent.
\$1,872.34	Kalamunda Cricket Club	Operational Expenses Pat Moran Pavilion	Club has requested additional time to pay invoices.
\$1,843.20	Lesmurdie/Walliston Cricket Club	Operational Expenses Ray Owen Pavilion	Reminder invoices to be sent.
\$4,860.00	Shire of Broome	Secondment Fees	
\$1,170.00	Simon Mead	Hall Hire	Reminder invoices to be sent.
\$1,934.00	Weight Watchers International	Hall Hire	Reminder invoices to be sent.
\$5,179.46	Zig Zag Café Kalamunda	Lease / Operational Expenses	Debtor committed to pay fortnightly instalments.
\$13,029.35	30+ Days Debts consisting of amounts under \$1,000.00.		Reminder invoices to be sent.
\$46,507.04	Total Debts 30+ Days		

< 30 days			
\$608,155.14	Total of Current Debts		
\$2,949.07	Total of Accounts in Credit		
\$1,384,711.75	Total - Debtors Trial Balance		
FOOTNOTES			
* Denotes currently in negotiation of invoice amount and details			
^ Denotes payment arrangement in place			

Attachment 3

SHIRE OF KALAMUNDA

SUMMARY OF CREDITORS FOR THE PERIOD ENDED 31 MAY 2014

Sundry Creditors Trial Balance - Summary Aged Listing

Month End	> 90 days	> 60 days	> 30 days	Current	Total
31/07/2012	\$1,129	\$2,418	\$829,279	\$1,240,322	\$2,073,148
31/08/2012	\$5,953	\$434	\$10,731	\$1,784,665	\$1,801,783
30/09/2012	\$13,713	\$1,630	\$6,362	\$1,036,804	\$1,058,509
31/10/2012	\$923	\$91,135	\$40,634	\$1,275,858	\$1,408,551
30/11/2012	\$8,738	\$4,059	\$10,289	\$1,387,687	\$1,410,773
31/12/2012	\$8,580	-\$454	\$53,987	\$544,597	\$606,710
31/01/2013	\$2,275	-\$4	\$10,756	\$380,050	\$393,077
28/02/2013	-\$191	-\$154	\$8,042	\$500,380	\$508,078
31/03/2013	-\$344	\$6,566	\$5,034	\$163,125	\$174,380
30/04/2013	\$7,253	\$39,057	\$10,266	\$690,585	\$747,161
31/05/2013	\$1,225	\$942	\$14,952	\$1,077,590	\$1,094,709
30/06/2013	\$9,393	\$13,544	\$364,665	\$1,914,271	\$2,301,873
31/07/2013	\$3,168	\$30,928	\$7,860	\$704,407	\$746,364
31/08/2013	\$1,618	\$6,095	\$46,102	\$542,740	\$596,555
30/09/2013	\$3,630	\$53,734	\$7,014	\$383,394	\$447,773
31/10/2013	\$12,120	\$1,454	\$107,830	\$1,566,553	\$1,687,957
30/11/2013	\$12,873	\$19,461	\$188,950	\$1,734,521	\$1,955,805
31/12/2013	\$1,090	\$8,183	\$10,820	\$781,525	\$801,618
31/01/2014	\$38,061	-\$3,986	\$64,483	\$863,813	\$962,372
28/02/2014	\$35,788	\$938	-\$2,540	\$2,145,331	\$2,179,518
31/03/2014	\$2,606	-\$2,850	\$14,442	\$846,590	\$860,788
30/04/2014	\$67,486	\$5,942	\$48,203	\$1,019,834	\$1,141,466
31/05/2014	\$183	\$31,578	\$72,756	\$1,596,398	\$1,700,916

Comment

- > 90 days Original Invoices for City of Perth & Orbit Health & Fitness Solutions not received in Accounts to process
- > 60 days Original Invoices for Elan Energy Management, Turfworks WA, McLeods Barristers & Solicitors, Hills BMX Club, Hills Gourmet, Contraflow, Rylan Pty Ltd, Alisha Hegarty and a Credit for Orbit Health & Fitness Solutions not received in Accounts to process.
- > 30 days These invoices are paid on the third fortnightly payment run.

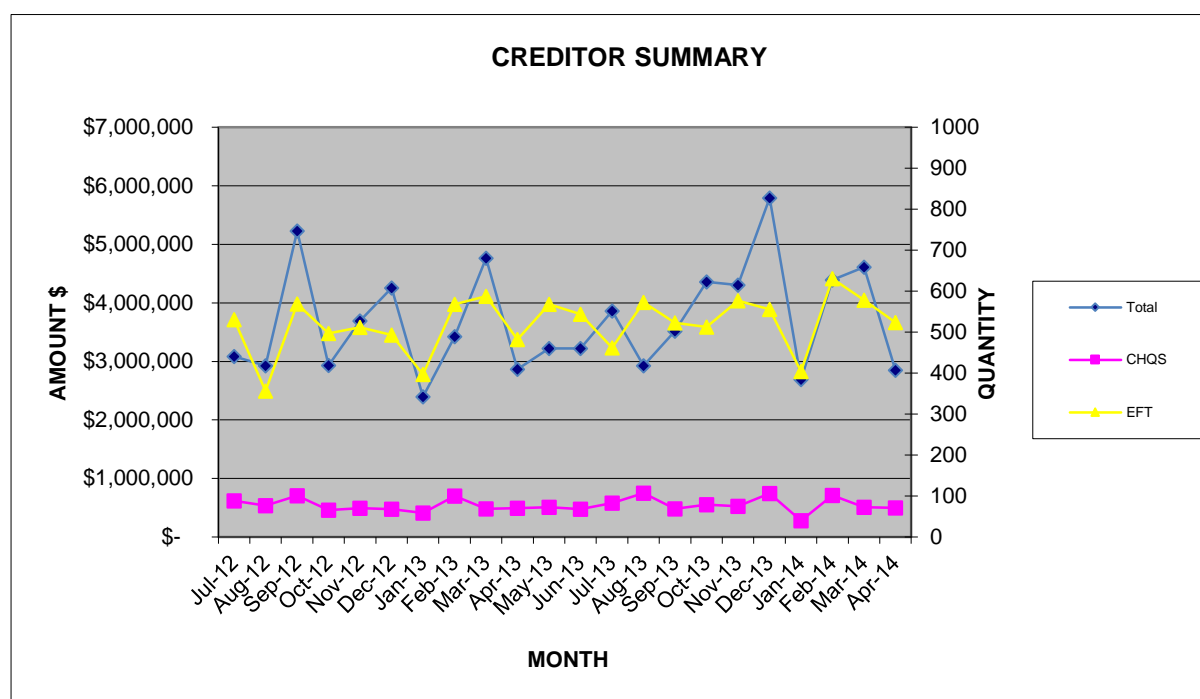
Creditor Payments made

Month	Amount \$	Quantity		
		Cheques	EFTs	Total
Jul-12	\$ 3,085,557	88	531	619
Aug-12	\$ 2,928,637	77	356	433
Sep-12	\$ 5,229,543	101	569	670
Oct-12	\$ 2,931,587	66	497	563
Nov-12	\$ 3,692,467	70	512	582
Dec-12	\$ 4,255,844	68	493	561
Jan-13	\$ 2,396,387	59	397	456
Feb-13	\$ 3,426,479	100	568	668
Mar-13	\$ 4,766,915	69	588	588
Apr-13	\$ 2,869,343	70	482	552
May-13	\$ 3,222,475	73	568	641
Jun-13	\$ 3,221,716	68	544	612
Jul-13	\$ 3,861,531	83	462	545
Aug-13	\$ 2,924,590	107	573	680
Sep-13	\$ 3,520,038	69	523	592
Oct-13	\$ 4,358,209	79	513	592
Nov-13	\$ 4,306,884	75	577	652
Dec-13	\$ 5,791,804	106	556	662
Jan-14	\$ 2,690,559	40	404	444
Feb-14	\$ 4,390,155	102	631	733
Mar-14	\$ 4,612,357	73	578	651
Apr-14	\$ 2,851,930	71	524	595
May-14	\$ 3,402,145	72	512	584

*Excludes net staff payroll

*Creditors on 30 day terms are paid on the 28th of the month following.

*Local suppliers are paid on 14 day terms.



Declaration of financial / conflict of interests to be recorded prior to dealing with each item.

20. Rates Debtors Report for the Period Ended 31 May 2014

Previous Items	N/A
Responsible Officer	Director Corporate Services
Service Area	Finance
File Reference	FI-DRS-004
Applicant	N/A
Owner	N/A
Attachment 1	Summary of Outstanding Rates for the period ended 31 May 2014

PURPOSE

1. To receive a report on rates debtors for the period ended 31 May 2014 (Attachment 1).

BACKGROUND

2. Rates notices were issued on 08 July 2013

Instalment dates are as follows:

Option 1 (Full Payment) - by 12 August 2013

Option 2 (Two Instalments) – 1st Instalment Date by 12 August 2013
2nd Instalment Date by 16 December 2013

Option 3 (Four Instalments) – 1st Instalment Date by 12 August 2013
2nd Instalment Date by 14 October 2013
3rd Instalment Date by 16 December 2013
4th Instalment Date by 10 February 2014

A grace period of two weeks was given before closing the instalment period. Any amounts outstanding on those ratepayers with an instalment option are regarded as defaulted and essentially fall off from this arrangement. The Shire can accept a direct debit payment arrangement to finalise the balance or a special payment arrangement is made in extenuating circumstances. Strict protocols are maintained so that the Shire is seen to be fair and equitable to all ratepayers.

3. 813 Letter of Demands were sent to outstanding ratepayers on 12 November 2013 and all but 62 have either paid in full or have taken up a direct debit payment arrangement to pay the balance of their rates.
4. As noted on (Attachment 1), the Shire has collected \$27,952,629 (includes Deferred Balance of \$463,579) or 97% of the debt from the date the rates and service charges were raised. As a comparison, last year's collection of rates were lower at 94% mainly due to the delay in issuance of the rates notices.

5. Significant progress has been made in raising Interim rates with \$276,070 having been raised to April 2014 so far. Interim rating is now up to date as at 30 April 2014. No further interim rating will be done until after the 2014/2015 Rates have been levied.

DETAILS

Debt Recovery

- 6.
- The 22 outstanding debts from 2012/13 that remain with Dun & Bradstreet (D&B) have had Judgement entered against them; eight have been served with a "Property Seizure & Sales Order" (PSSO). The balance are still to have PSSO issued once located.
 - As indicated in point 3 above, there were still 62 ratepayers who have not responded to the D&B. The Shire has now requested D&B to proceed to Judgement on the 62 properties where no response or payment has been received. Of the 50 properties where Judgement was applied 15 remain unpaid and a PSSO has been issued.
 - 396 outstanding debts are deemed too small in value (i.e. <\$500) to warrant legal action and will be followed up in house.
 - 28 ratepayers have direct debits in place and the majority will be finalised before the end of the financial year.
 - A report will then be brought to Council in the next financial year to approve the issuance of a land warrant for those that have proceeded to Judgment and have still not satisfied the claim.

STATUTORY AND LEGAL CONSIDERATIONS

7. The Shire collects its rates debts in accordance with the *Local Government Act (1995) Division 6 – Rates and Service Charges under the requirements of subdivision 5 – Recovery of unpaid rates and service charges.*

POLICY CONSIDERATIONS

8. Nil.

COMMUNITY ENGAGEMENT REQUIREMENTS

9. Nil.

FINANCIAL CONSIDERATIONS

10. The early raising of rates in July allowed the Shires operations to proceed without delays in addition to earning additional interest.

STRATEGIC COMMUNITY PLAN

Strategic Planning Alignment

11. *Kalamunda Advancing: Strategic Community Plan to 2023*
OBJECTIVE 6.8 – To ensure financial sustainability through the implementation of effective financial management, systems and plans.
Strategy 6.8.4 Provide effective financial services to support the Shire's operations and to meet sustainability planning, reporting and accountability requirements.

SUSTAINABILITY

Social Implications

12. Debt collection can have implications upon those ratepayers facing hardship and the Shire must ensure equity in its debt collection processes.

Economic Implications

13. Effective collection of all outstanding debtors leads to enhanced financial sustainability for the Shire.

Environmental Implications

14. Nil.

RISK MANAGEMENT CONSIDERATIONS

- 15.
- | Risk | Likelihood | Consequence | Rating | Action/Strategy |
|--|------------|-------------|--------|--|
| The Shire is exposed to the potential risk of the ratepayer failing to make payments which it is obligated to do. This will result in the disruption of cash flows and increased collection costs. | Low | Low | Low | Ensure debt collections is rigorously managed. |

OFFICER COMMENT

16. Nil.

Voting Requirements: Simple Majority

COMMITTEE RECOMMENDATION TO COUNCIL (C&C 20/2014)

That Council:

1. Receives the rates debtors report for the period ended 31 May 2014 (Attachment 1).

Moved: **Cr Dylan O'Connor**

Seconded: **Cr Geoff Stallard**

Vote: **CARRIED UNANIMOUSLY (11/0)**

Attachment 1

SHIRE OF KALAMUNDA

SUMMARY OF OUTSTANDING RATES FOR THE PERIOD ENDED 31 MAY 2014

Rates Outstanding Debtors

	3rd Previous Year + Outstanding	2nd Previous Year Outstanding	Previous Year Outstanding	Current Outstanding	Total Outstanding	Previous Year Total Outstanding
31/07/2013	\$315,936	\$94,910	\$295,163	\$22,754,586	\$23,460,595	\$779,089
31/08/2013	\$313,756	\$91,341	\$223,784	\$14,084,885	\$14,713,766	\$22,398,443
30/09/2013	\$310,039	\$87,180	\$183,695	\$12,571,976	\$13,152,890	\$13,496,792
30/10/2013	\$309,076	\$83,444	\$165,097	\$10,113,059	\$10,670,676	\$12,802,377
30/11/2013	\$305,152	\$81,878	\$142,520	\$8,882,464	\$9,412,015	\$9,569,596
31/12/2013	\$302,318	\$79,071	\$131,332	\$5,186,504	\$5,699,225	\$8,630,908
31/01/2014	\$299,941	\$76,726	\$123,954	\$4,141,098	\$4,641,719	\$5,563,543
28/02/2014	\$298,729	\$76,379	\$118,713	\$1,925,318	\$2,419,139	\$4,523,618
31/03/2014	\$297,104	\$70,986	\$113,062	\$1,128,634	\$1,609,787	\$2,052,964
30/04/2014	\$295,969	\$70,302	\$110,000	\$863,502	\$1,339,772	\$1,361,182
31/05/2014	\$292,984	\$68,550	\$103,090	\$741,068	\$1,205,692	\$1,041,285
30/06/2014					\$0	

Rate Levied 2013/2014

Interim 2013/2014

Back Rates

Total Levies To Date for 2013/14

\$28,416,654
\$276,070
\$2,019
\$28,694,743

Total Rates Outstanding

1,205,692

Current Deferred Rates Amount
(from Rate Reports)

\$ 463,579

Total Rates amount to be collected not including deferred

\$742,113

% of Rates
Outstanding:

2.63%

Comment

The 2013/2014 Instalment Dates are as follows:

	4x instalments	2x instalments
1st Instalment	12/08/2013	12/08/2013
2nd Instalment	14/10/2013	16/12/2013
3rd Instalment	16/12/2013	
4th Instalment	10/02/2014	

Declaration of financial / conflict of interests to be recorded prior to dealing with each item.

21. Disability Access and Inclusion Policy Statement and Disability Access and Inclusion Plan

Previous Items	Nil
Responsible Officer	Director Corporate Services
Service Area	Community Care
File Reference	HE-PUH-007
Applicant	Shire of Kalamunda
Owner	Shire of Kalamunda
Attachment 1	Disability Access and Inclusion Plan 2012 - 2017
Attachment 2	Disability Access and Inclusion Policy Statement

PURPOSE

1. For Council to endorse the amended Disability Access and Inclusion Plan 2012 – 2017 (DAIP) (Attachment 1) and Disability Access and Inclusion Policy Statement (Attachment 2).

BACKGROUND

2. Section 28 of the *Disability Services Act (WA) 1993* (the Act) requires a public authority to prepare a DAIP. This section also provides that a DAIP can be amended at any time, but must be reviewed every five years.
3. In 2014 it is an additional requirement that the DAIP must be amended to include Outcome 7 to ensure that people with disability have the same opportunities as other people to obtain and maintain employment within the public sector.
4. Public authorities are required to submit an amendment to their DAIPs to the Disability Services Commission (DSC) to address Outcome 7 by 1 July 2014.
5. It has been necessary to amend the Disability Access and Inclusion Policy Statement to reflect the changes in the DAIP.

DETAILS

6. In consultation with the Disability Access and Inclusion Advisory Committee, the Shire of Kalamunda's DAIP 2012 – 2017 has been reviewed and amended to include Outcome 7

Outcome 7: *People with disability have the same opportunities as other people regarding employment practices (recruitment and retention) with the Shire of Kalamunda.*

STATUTORY AND LEGAL CONSIDERATIONS

7. Part 5 of *The Disability Services Act (WA) 1993 (amended 2004)*, requires public authorities, (Western Australian State Government agencies and Local Government Authorities) to develop and implement a Disability Access and Inclusion Plan in accordance with prescribed standards covering consultation, review and reporting.

POLICY CONSIDERATIONS

8. The Disability Access and Inclusion Policy Statement has been amended to include Outcome 7 (Attachment 2).
9. In addition the Policy Statement has also been amended to reflect the change of wording from "people with disabilities" to "people with disability".

COMMUNITY ENGAGEMENT REQUIREMENTS

10. Public comment was invited through the local media, Shire of Kalamunda's website, libraries, recreation centres and targeted community members.

FINANCIAL CONSIDERATIONS

11. A budget is required each financial year to implement actions from the DAIP.

STRATEGIC COMMUNITY PLAN

Strategic Planning Alignment

12. *Kalamunda Advancing: Strategic Community Plan to 2023*

Strategy 1.1.3 Plan for and provide ongoing support for people with disability to feel included within the community.

SUSTAINABILITY

Social Implications

13. The provision of access and inclusion for people with disability is essential to foster independence and develop a positive sense of belonging within the community.

Economic Implications

14. Nil.

Environmental Implications

15. Nil.

RISK MANAGEMENT CONSIDERATIONS

16.

Risk	Likelihood	Consequence	Rating	Action/Strategy
Amendments to DAIP and Policy Statement not endorsed by Council would result in a breach of legislation	Unlikely	Critical	High	Council to endorse amendments to DAIP 2012 – 2017 and Disability Access and Inclusion Policy Statement

OFFICER COMMENT

17. The amendments incorporated into the DAIP with respect to Outcome 7 will ensure that the Shire meets the statutory requirements of the Act.

A Councillor commented that the Shire should encourage community involvement and asked if local business had been contacted with regard to this Plan. This question was taken on notice by the Director Corporate Services.

Voting Requirements: Simple Majority

COMMITTEE RECOMMENDATION TO COUNCIL (C&C 21/2014)

That Council:

1. Endorse the amended Disability Access and Inclusion Plan 2012 – 2017 (Attachment 1) and Disability Access and Inclusion Policy Statement (Attachment 2) to include Outcome 7.

Moved: **Cr Margaret Thomas**

Seconded: **Cr Frank Lindsey**

Vote: **CARRIED UNANIMOUSLY (11/0)**

Attachment 1

Disability Access and Inclusion Plan 2012–2017



This Plan can be made available in alternative formats upon request



Shire of Kalamunda
Disability Access and Inclusion Plan 2012–2017
Updated June, 2014
Adopted by a Resolution of the Council 18 June 2012

This Plan is available in electronic format (email, website, CD) and large print upon request.



Contents

1. Background	1
1.1 Demographics	1
1.2 Brief History	2
1.3 Functions, Facilities and Services (both in-house and contracted)	3
1.4 People with Disability in the Community	5
1.5 Planning for Better Access	6
1.6 Progress Since 1995	6
1.7 Progress and Achievements Since DAIP 2007–2012	7
2. Disability Access and Inclusion Policy	9
3. Development of Disability Access and Inclusion Plan	11
3.1 Responsibility for the Planning Process	11
3.2 Review and Consultation Process	11
3.3 Findings of the Consultation	12
3.4 Responsibility for Implementing the DAIP	12
3.5 Communicating the Plan to Staff, Contractors and People with Disability	13
3.6 Review and Evaluation Mechanisms	13
3.7 Monitoring and Reviewing	13
3.8 Reporting on the DAIP	14
4. Strategies to Improve Access and Inclusion	15



Acknowledgements

The Shire of Kalamunda acknowledges the input received from individuals and community groups, which has been invaluable in the preparation of this *Disability Access and Inclusion Plan 2012–2017*.

In particular, thanks are given to Disability Access and Inclusion Advisory Committee, Disability Services Commission—Local Area Coordinators, Shire employees, Councillors and individual community members.



1. Background

1.1 Demographics

The Shire of Kalamunda is located 24 kilometres to the east of the Perth Central Business District. The Shire has a land area of about 349 kilometres, most of which the non-urban/rural area is subject to water catchment area constraints. Geographically, the Shire of Kalamunda has three distinct areas:

- **Foothills/Plains:** Forrestfield, High Wycombe, Maida Vale and Wattle Grove
- **Darling Escarpment:** Kalamunda, Lesmurdie and Gooseberry Hill
- **Eastern Rural Districts:** Walliston, Bickley, Carmel, Pickering Brook, Piesse Brook, Paulls Valley, Hackets Gully and Canning Mills

Shire Statistics	
Distance from Perth (km)	24
Area (square kms)	349
Length of sealed roads (km)	599
Length of unsealed roads (km)	25
Population	59,716
Number of electors	37,836
Number of dwellings	21,463



Major features of the Shire include Gooseberry Hill National Park, Kalamunda National Park, Lesmurdie Falls National Park, Darling Range Regional Park, Victoria Reservoir, Hartfield Park, Jorgensen Park, Pioneer Park, Kalamunda History Village, Kalamunda District Community Hospital, Perth Observatory, Bibbulmun Track, Hartfield Country Club, Hill View Golf Course, Pickering Brook Golf Course, the Kalamunda CBD, Forrestfield Forum Shopping Centre, several state forests and various wineries.

Local industries include orchards, intensive horticulture activities, grazing, animal agistment, minor sawmills, poultry, Government Works Depot and the C.B.H state grain terminal.

The Shire also encompasses rapidly growing urban areas in the foothills, such as Forrestfield, High Wycombe, Maida Vale, Wattle Grove and an expanding industrial and transport hub adjacent to Perth airport. The Shire is served by the Roe Highway and the Tonkin Highway.

See Diagram 1: Shire Localities and Wards

1.2 Brief History

MEANING: The name Kalamunda comes from local Aboriginal words Cala (home) and Munnda (forest). Thus Kalamunda means "a home in the forest".

Prior to European settlement the Beeloo people occupied much of the land east of the Canning River in the Shire. In 1827 the Colonial Botanist Mr Charles Fraser and Captain James Stirling explored the region to evaluate its suitability for farming. Initially the area was used for forestry and orchards; fruit growing continues to be one of the major industries in the Shire today.

In 1897 the Darling Range Roads Board was formed, but it was not until a year later the first meeting was held, on 16 April 1898. The town site of Kalamunda was approved in 1902.

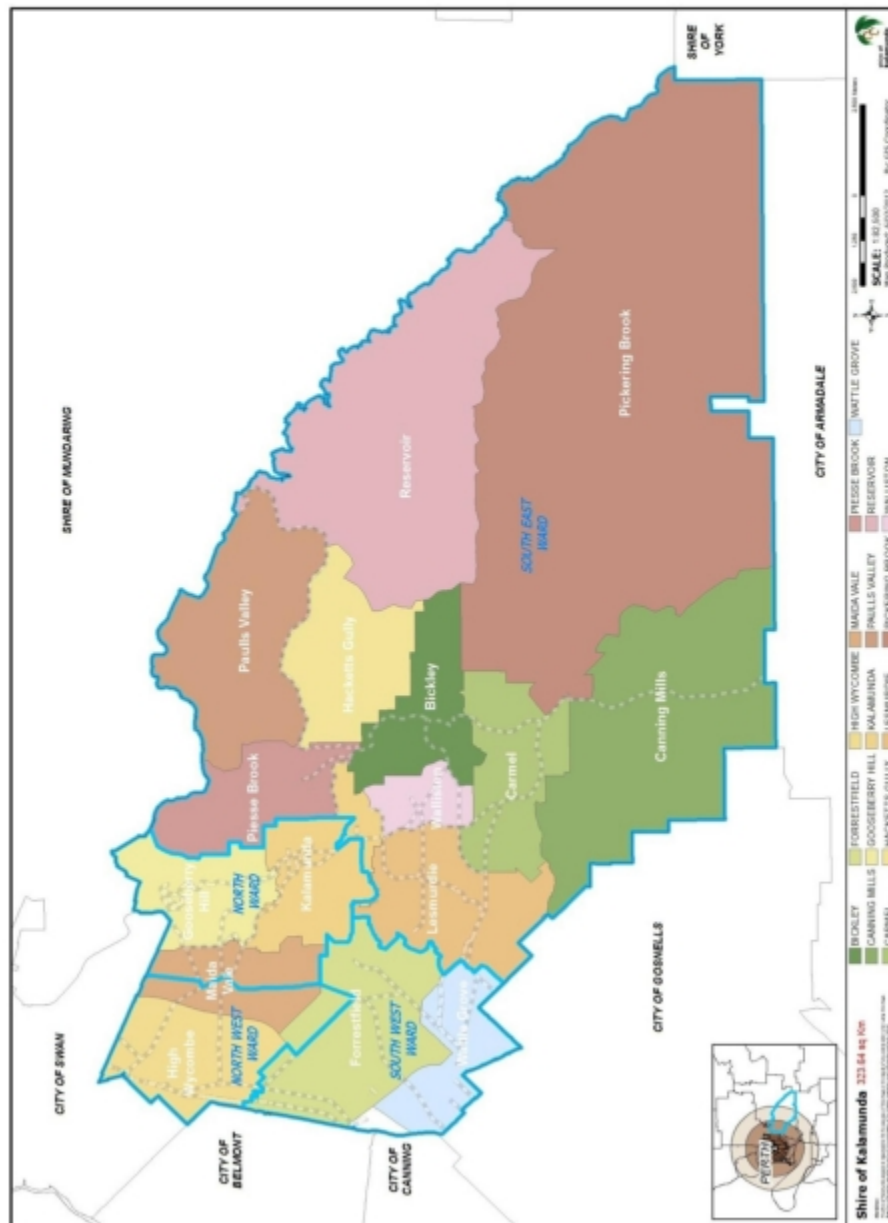
In 1961 the Darling Range Roads Board was renamed the Shire of Kalamunda and in 1978 the Shire moved its operations to the current Administration Centre, in 2 Railway Road.

The most significant development occurred during the post-war years, particularly during the 1960s and 1970s.

The population was relatively stable during the 1990s, and then increased slightly between 2001 and 2006, rising from about 46,000 in 2001 to approximately 56,000 in 2012.



Diagram 1: Shire Localities and Wards





1.3 Functions, Facilities and Services (both in-house and contracted)

The Shire of Kalamunda is responsible for a range of functions, facilities and services including:

1.3.1 Property Services:

- Construction and maintenance of Shire-owned facilities
- Construction and maintenance of roads, footpaths, trails and cycle facilities
- Land drainage and development
- Waste collection and disposal; litter control and street cleaning
- Removal of graffiti
- Coordination of Bushcare Volunteer Program, GIS mapping, house and lot numbering, street lighting and bush fire services

1.3.2 Community Services:

- Provision of ovals, parks, gardens, reserves and facilities for sporting and community groups
- Provision of community centres and halls
- Management of recreation centres and recreation services
- Provision of library services through the four Shire libraries including internet access
- Information services and the Shire's website
- Environmental health services, community safety services
- Community development and community cultural planning services
- Seniors and disability services
- Support for and the provision of in-home and centre-based respite care services
- Provision of support and infrastructure for community events
- Community grants

1.3.3 Regulatory Services:

- Various planning services including roads and subdivisions
- Building investigations, approvals for construction, alterations and additions
- Compliance services for swimming pools and noise pollution
- Health Services
- Ranger services including dog control, parking maintenance/control and bush fire control
- Emergency management services

1.3.4 General Administration:

- Provision of information to the public
- Receipt of incoming monies (rates, registrations, building fees etc.)



1.3.5 Processes of Government:

- Council meetings (Special and Ordinary), Committee Meetings and Electors Meetings
- Committee meetings including the Disability Access and Inclusion Advisory Committee
- Community consultation, Ward representation and ordinary and special Council meetings

1.4 People with Disability in the Community

A disability can affect a person's capacity to communicate, interact with others, learn or get about independently. It is usually permanent, but may be episodic.

The residential population of the Shire of Kalamunda is around 59,716 (ABS ERP 2013). According to the Australian Bureau of Statistics (ABS) Survey of Disability, Ageing and Carers (2012), 18.5% of Australians or just under 1 in 5 people identify as having some form of disability. Based on the population of the Shire and that prevalence rate, it is estimated that there may be up to 11,000 people with some form of disability living in the Shire. These disabilities may range from mild and moderate to severe or profound, and in the latter category there may be up to 2800 people of all ages and around 1350 of these will be people with severe or profound disability under the age of 65 years.





1.5 Planning for Better Access

The Western Australia Disability Services Act requires all Local Governments to develop and implement a *Disability Access and Inclusion Plan* (DAIP) to ensure that People with disability have equal access to its facilities and services.

Legislation underpinning access and inclusion includes the Disability Services Act (1993), Disability Discrimination Act (DDA) (1992) and the West Australian Equal Opportunity Act (1984).

There have been some local, national and international legislative, regulatory and policy changes relating to disability in recent times that must also be considered when planning for access and inclusion. These include:

- The United Nations Convention on the Rights of Persons with Disability (UNCRPD) and its optional protocol, both of which have been ratified by Australia. On the fundamental issue of accessibility (Article 9), the Convention requires countries to identify and eliminate obstacles and barriers and ensure that persons with disabilities can access their environment, transportation, public facilities and services, and information and communications technologies;
- Introduction of the new Disability (Access to Premises – Buildings) Standards 2010, to ensure consistency between the access requirements of the Building Code of Australia and the DDA. This has been over a decade in development and applies to any new buildings or major re-developments commencing after 1 May 2011;
- *Count Me In – Disability Future Directions* is a new State Government long-term strategy aimed at developing safe accessible communities, transport, housing and services for people with disability.

1.6 Progress Since 1995

The Shire of Kalamunda is committed to facilitating the inclusion of People with disability through the improvement of access to its information, facilities and services. The Shire adopted its first Disability Service Plan (DSP) in 1996 to address the access barriers within the community.

Since the adoption of the initial DSP, the Shire has implemented many initiatives and made significant progress towards better access.

In 2007 the Shire of Kalamunda developed its first 5-year *Disability Access and Inclusion Plan 2007–2012*. The DAIP is a key guiding document for the Shire of Kalamunda.

During the life of this plan, the Shire has continued to improve access and remove barriers through the implementation of many strategies contained in the plan. Significant progress has been made towards providing better access to the community.



1.7 Progress and Achievements since DAIP 2007–2012

1.7.1 Existing functions, facilities and services are adapted to meet the needs of People with disability

- Expansion of membership of Disability Access and Inclusion Advisory Committee to represent a wider cross-section of disabilities within the community;
- Development of a Disability Access and Inclusion Policy to support equitable access to services by people with disability throughout the various functions of the Shire;
- Public Parks are being made more accessible, with a Liberty Swing installed in Stirk Park in Kalamunda;
- People with disability are encouraged to participate in programmes and events;
- Shire of Kalamunda is a partner in the Companion Card Scheme which allows carers to have free entry when supporting a person with disability to engage in a programme or event;
- A rubbish collection service is available upon request for people with disability who are unable to transfer rubbish or recycling bins to verge;
- Footpaths and access ramps are being progressively upgraded.

1.7.2 Access to buildings and facilities has been improved

- Development of a Disability Access Audit Report
- Ongoing implementation of recommendations contained within the Access Audit
- Audio loop installed into Council Chambers
- Interpreter's service available upon request
- Physical access into libraries improved
- Program to upgrade footpaths and ramps within the Shire

1.7.3 Information about functions, facilities and services is provided in formats which meet the communication needs of People with disability

- Upgrade and improvement of the website to ensure greater accessibility
- Information can be made available in alternative formats upon request
- Assistance to complete feedback sheets can be provided upon request



1.7.4 Staff awareness of the needs of People with disability and skills in delivering advice and services is improved

- Presentation of Disability Awareness Training for staff
- Disability Awareness Training included in induction program and available to staff via intranet
- Improved awareness of new employees and Councillors about disability and access issues

1.7.5 Opportunities for People with disability to participate in public consultations, grievance mechanisms and decision-making processes are provided

- Postal voting introduced for people with disability
- Service available to assist persons with visual impairment to complete ballot forms
- Development of awareness about the Shire of Kalamunda's consultation processes
- Opportunity for people with disability to contribute to the community consultation process for development of new Disability Access and Inclusion Plan using a range of methodologies
- Ongoing monitoring of the *Disability Access and Inclusion Plan* to ensure implementation and satisfactory outcomes



2. Disability Access and Inclusion Policy Statement

Purpose

To meet the requirements of the Disability Services Act 1993 and Regulations 2004 and to state the Shire of Kalamunda's position with regard to providing an accessible, inclusive community for everyone including people with disability, their families and carers.

Policy Statement

The Shire of Kalamunda is committed to ensuring that the community is accessible for and inclusive of people with disability, their families and carers.

The Shire of Kalamunda interprets an accessible and inclusive community as one in which all Council functions, facilities and services (both in-house and contracted) are open, available and accessible to people with disability, providing them with the same opportunities, rights and responsibilities as other people in the community.

The Shire of Kalamunda:

- recognises that people with disability are valued members of the community who make a variety of contributions to local social, economic and cultural life;
- believes that a community that recognises its diversity and supports the participation and inclusion of all of its members makes for a richer community life;
- believes that people with disability, their families and carers should be supported to remain in the community;
- is committed to consulting with people with disability, their families and carers and disability organisations and service providers in addressing barriers to access and inclusion;
- will ensure its agents and contractors work towards the desired outcomes in the *Disability Access and Inclusion Plan*;
- is committed to supporting local community groups and businesses to provide access and inclusion of people with disability; and
- is committed to achieving the seven desired outcomes of its *Disability Access and Inclusion Plan*.



Seven Outcomes of the DAIP:

1. People with disability have the same opportunities as other people to access the services of, and any events organised by, the Shire of Kalamunda.
2. People with disability have the same opportunities as other people to access the buildings and other facilities of the Shire of Kalamunda.
3. People with disability receive information from the Shire of Kalamunda in a format that will enable them to access the information as readily as other people are able to access it.
4. People with disability receive the same level and quality of service from the staff of the Shire of Kalamunda.
5. People with disability have the same opportunities as other people to make complaints to the Shire of Kalamunda.
6. People with disability have the same opportunities as other people to participate in any public consultation by the Shire of Kalamunda.
7. People with disability have the same opportunities as other people to obtain and maintain employment within a public authority.



3. Development of Disability Access and Inclusion Plan

3.1 Responsibility for the Planning Process

The Director of Corporate and Community Services has responsibility to oversee the development, implementation, review and evaluation of the plan. The final plan is required to be endorsed by Council and it is the responsibility of all officers to implement the relevant actions.

3.2 Review and Consultation Process

In 2012 the Shire undertook a review of the *Disability Access and Inclusion Plan 2007–2012* in consultation with key stakeholders to draft a new DAIP which will guide further improvements to access and inclusion. The process included:

- Review of the *Disability Access and Inclusion Plan 2007–2012* to identify achievements, gaps and areas which require ongoing development;
- Review annual progress reports, relevant council documents, disability legislation, developing trends and best practice in access and inclusion;
- Consultation with Councillors, professionals, staff and the wider community;
- Compliance with the Disability Services Act Regulations (2004).

The following consultation methods were used:

- In January 2012 the consultation process for the DAIP Review was advertised in two local newspapers, through Disability Services Commission Local Area Coordinators, Shire of Kalamunda Libraries, Recreation Centres, Schools, the Shire's website/intranet and to targeted community members;
- In addition, two community consultation sessions were presented in Kalamunda and the Foothills;
- The community was advised of the need to develop a new DAIP for the period 2012 to 2017. Residents and community members were invited to provide comments and feedback on any improvements or access barriers that existed in the Shire of Kalamunda;
- Staff were invited to complete a questionnaire and to participate in the consultation process.



- In March 2014 the Shire of Kalamunda notified the community through: advertisements in two local newspapers; the Shire's website, intranet, libraries and recreation centres; schools; and targeted Disability Access and Inclusion Advisory Committee members and community members that the Shire was undertaking a review of its *DAIP 2012–2017*.
- Notice was also given in the advertisements that the DAIP would be amended to include Outcome 7.
- Staff and community were invited to provide feedback on the DAIP and inclusion of Outcome 7 within a four week period which closed on 18 April 2014.

3.3 Findings of the Consultation

The consultation provided an opportunity for a cross-section of staff and community members to comment on the plan. Access barriers and other issues identified included requests for:

- Additional ACROD parking
- Improved monitoring of ACROD parking
- Improved access to the Council Chambers
- Improved access to the Zig Zag Cultural Centre
- Improved access to Kalamunda Performing Arts Centre
- Improved accessible facilities at the Kalamunda Water Park
- Improved access to Kalamunda Learning Centre
- Improved access to local businesses
- Improved advertising and dissemination of marketing material
- Access mapping for Kalamunda shopping precinct
- Accessible toilet in the Kalamunda town centre
- More sport and recreation opportunities for children with a disability
- Consideration when placing rubbish bins on footpaths
- Right of way for pedestrians when crossing roads in the town centre

3.4 Responsibility for Implementing the DAIP

Implementation of the DAIP is the responsibility of all areas of the Shire. The Disability Services Act (1993) requires public authorities to take all practical measures to ensure that the DAIP is implemented by its officers, employees, agents and contractors.



3.5 Communicating the Plan to Staff, Contractors and People with Disability

- Copies of the draft DAIP were sent to the Disability Services Commission and all those who contributed to the planning process in May 2012.
- The plan was finalised and formally endorsed by Council in May 2012.
- The community was informed through the local media, internet and distribution of flyers that copies of the plan were available upon request and in alternative formats upon request.
- New staff members are provided with an introduction to the DAIP.
- All staff receive Disability Awareness Training and information on how to access the complete DAIP document.
- Councillors, staff professionals and the community will be advised when the DAIP is updated using the above methods.
- A clause has been included in all contract and tender documents advising Contractors of their obligation to implement the Shire of Kalamunda's DAIP wherever practicable and report annually on their compliance with the plan.
- The revised DAIP 2012–2017 with inclusion of Outcome 7 was endorsed by Council June 2014.
- Following endorsement the amended DAIP will be promoted as outlined above.

3.6 Review and Evaluation Mechanisms

The Disability Services Act requires that DAIPs be reviewed at least every five years. Whenever the DAIP is amended, a copy of the amended plan must be lodged with the Disability Services Commission. The Implementation Plan can be updated more frequently if desired.

3.7 Monitoring and Reviewing

- The Coordinator Community Care will monitor progress towards achieving stated outcomes in the plan.
- The Disability Access and Inclusion Advisory Committee will review the implementation of the DAIP annually.
- Information on outcomes of the DAIP will be incorporated into the Annual Report.
- Feedback will be sought from People with disability, Councilors and staff about the effectiveness of the plan.
- An evaluation will occur as part of the five-yearly review of the DAIP in 2017.



- The community, staff and elected members will be consulted as part of any evaluation using the consultation methods previously outlined.
- People with disability, their families and carers will be invited to comment on the plan and identify further barriers and potential solutions to those barriers.
- Amendments to the plan will be communicated using the consultation methods previously outlined in this document.

3.8 Reporting on the DAIP

The Disability Services Act requires the Shire to report on the implementation of its DAIP in the Shires annual report outlining:

- Progress towards the desired outcomes of its DAIP;
- Progress of its agents and contractors towards meeting the six desired outcomes; and
- Strategies used to inform agents and contractors of its DAIP.

The Shire is also required to report on progress in the prescribed format to the Disability Services Commission by 4 July each year.



4. Strategies to Improve Access and Inclusion

As a result of the consultation process the following overarching strategies will guide tasks (reflected in the Implementation Plan) that the Shire of Kalamunda will undertake during 2012–2017 to improve access to its services, buildings and information. The six desired outcomes provide a framework for improving access and inclusion for People with disability in the Shire.

Outcome 1: People with disability have the same opportunities as other people to access the services of, and any events organised by, the Shire of Kalamunda		
Strategy		Timeline
1.1	Ensure that people with disability are included in consultation and provided with an opportunity to comment on access to services and events	Ongoing
1.2	Maintain links between DAIP and other Council Strategic Plans	Ongoing
1.3	Ensure staff, agents and contractors are aware of the relevant requirements for providing access in accordance with Disability Services Act (1993)	Ongoing
1.4	Improve advertising and dissemination of marketing material	Ongoing
1.5	Ensure events, activities and services are accessible	Ongoing



Outcome 2: People with disability have the same opportunities as other people to access the buildings and other facilities of the Shire of Kalamunda		
Strategy		Timeline
2.1	Ensure buildings and facilities are accessible	Ongoing
2.2	Ensure that all new or redevelopment works provide access to People with disability, where practicable	Ongoing
2.3	Allocate funds in the annual budget to implement work to improve accessibility as identified in the Access Audit	Ongoing
2.4	Ensure ACROD parking meets the needs of people with disability	Ongoing
2.5	Promote You're Welcome WA to local business owners, proprietors and community members	Ongoing
2.6	Continue the program to upgrade footpaths and ramps within the Shire of Kalamunda	Ongoing
2.7	Continue to improve access in the Town Centre and research provision of Access Mapping	Ongoing
2.8	Consider the inclusion of accessible playground equipment in the development of new playgrounds	Ongoing
2.9	Ensure people with disability are able to move freely around the community so they can access facilities and be included in the community life	Ongoing

Outcome 3: People with disability receive information from a public authority in a format that will enable them to access the information as readily as other people are able to access it		
Strategy		Timeline
3.1	Provide all Shire information and publications in alternative formats upon request	Ongoing
3.2	Promote the availability of Audio Loop in Council Chambers	Ongoing
3.3	Ensure that the Shire's website is accessible to people with disability and meets contemporary good practice guidelines	Ongoing
3.4	Continue to provide books on wheels service through the Shire of Kalamunda Libraries	Ongoing
3.5	Ensure that the Shire of Kalamunda's Disability Access and Inclusion Plan is available on the website and can be distributed in hard copy or alternative formats upon request	Ongoing
3.6	Provide an information brochure for people with disability	Ongoing



Outcome 4: People with disability receive the same level and quality of service from the staff of the Shire of Kalamunda as other people receive from the staff of the Shire of Kalamunda

Strategy		Timeline
4.1	Provide disability awareness training to ensure that staff have the skills to provide high quality customer service to People with disability	Ongoing
4.2	Ensure that staff, agents and contractors are aware of the relevant requirements of the Disability Services Act (1993)	Ongoing
4.3	Continue to raise awareness of new employees and Councillors about disability access and inclusion	Ongoing

Outcome 5: People with disability have the same opportunities as other people to make complaints to the Shire of Kalamunda

Strategy		Timeline
5.1	Ensure Shire staff have skills and knowledge to assist people with disability to make complaints or requests	Ongoing
5.2	Promote and distribute "Improving Access" feedback form	Ongoing
5.3	Promote and utilise Shire's online feedback form	Ongoing
5.4	Ensure that complaints can be lodged using alternative means including fax, mail, telephone, email and in person	Ongoing
5.5	Provide support to lodge complaint if necessary	Ongoing

Outcome 6: People with disability have the same opportunities as other people to participate in public consultation by the Shire of Kalamunda

Strategy		Timeline
6.1	Ensure public consultations are accessible by community members	Ongoing
6.2	Provide adequate time for comment when consulting with the community	Ongoing
6.3	Provide feedback from community consultation where appropriate	Ongoing
6.4	Provide opportunities for the community to comment on the DAIP and disability access issues	Ongoing
6.5	Ensure that people with disability are consulted when reviewing the Disability Access and Inclusion Plan	Ongoing



Outcome 7: People with disability have the same opportunities as other people to obtain and maintain employment within a public authority.		
Strategy		Timeline
7.1	Review recruitment practices to ensure equal opportunity for people with disability	Ongoing
7.2	Continue to explore opportunities for grants to support the employment and training of people with disability	Ongoing
7.3	Continue to support the provision of return to work plans, work experience and volunteering opportunities for students and people with disability	Ongoing
7.4	Continue to build relationships with supported employment agencies	Ongoing
7.5	Throughout the course of employment an employee with either short term or permanent disability will receive the support and resources required to enable them to effectively complete their job	Ongoing

Attachment 2

[Policy Number]: “Disability Access and Inclusion Policy Statement” Council Policy	
Management Procedure	Relevant Delegation
Disability Access and Inclusion Plan	

Purpose

To meet the requirements of the Disability Services Act 1993 and Regulations 2004 and to state the Shire of Kalamunda’s position with regard to providing an accessible, inclusive community for everyone including people with disability, their families and carers.

Policy Statement

The Shire of Kalamunda is committed to ensuring that the community is accessible for and inclusive of people with disability, their families and carers.

The Shire of Kalamunda interprets an accessible and inclusive community as one in which all Council functions, facilities and services (both in-house and contracted) are open, available and accessible to people with disability, providing them with the same opportunities, rights and responsibilities as other people in the community.

The Shire of Kalamunda:

- recognises that people with disability are valued members of the community who make a variety of contributions to local social, economic and cultural life;
- believes that a community that recognises its diversity and supports the participation and inclusion of all of its members makes for a richer community life;
- believes that people with disability, their families and carers should be supported to remain in the community;
- is committed to consulting with people with disability, their families and carers and disability organisations and service providers in addressing barriers to access and inclusion;
- will ensure its agents and contractors work towards the desired outcomes in the Disability Access and Inclusion Plan (DAIP);
- is committed to supporting local community groups and businesses to provide access and inclusion of people with disability; and
- is committed to achieving the seven desired outcomes of its DAIP.

These Seven Outcomes are:

1. People with disability have the same opportunities as other people to access the services of, and any events organised by, the Shire of Kalamunda.
2. People with disability have the same opportunities as other people to access the buildings and other facilities of the Shire of Kalamunda.
3. People with disability receive information from the Shire of Kalamunda in a format that will enable them to access the information as readily as other people are able to access it.
4. People with disability receive the same level and quality of service from the staff of the Shire of Kalamunda.

5. People with disability have the same opportunities as other people to make complaints to the Shire of Kalamunda.
6. People with disability have the same opportunities as other people to participate in any public consultation by the Shire of Kalamunda.
7. People with disability have the same opportunities as other people regarding employment practices (recruitment and retention) with the Shire of Kalamunda.

Related Local Law			
Related Policies			
Related Budget Schedule			
Legislation	Disability Services Act 1993 and Regulations 2004		
Conditions			
Authority			
Adopted		Next Review Date	

10.0 MOTIONS OF WHICH PREVIOUS NOTICE HAS BEEN GIVEN

10.1 Nil.

11.0 QUESTIONS BY MEMBERS WITHOUT NOTICE

11.1 Cr Justin Whitten – Cell 9 Trust Account

Q. Although I understand that certain funds in the Cell 9 Trust Account have been committed, such as for the Education Department for a school site, can staff investigate and advise how the balance of the funds could be expended in the Wattle Grove Cell 9 Area?

A. This question was taken on notice by the Director Development Services.

12.0 QUESTIONS BY MEMBERS OF WHICH DUE NOTICE HAS BEEN GIVEN

12.1 Nil.

13.0 URGENT BUSINESS APPROVED BY THE PRESIDING MEMBER OR BY DECISION

13.1 Nil.

14.0 MEETING CLOSED TO THE PUBLIC

14.1 Nil.

15.0 CLOSURE

15.1 There being no further business the Presiding Member declared the meeting closed at 6.40pm.

I confirm these Minutes to be a true and accurate record of the proceedings of this Council.

Signed: _____
Presiding Member

Dated this _____ day of _____ 2014