

# Corporate & Community Services Committee Meeting

Agenda for Tuesday 22 April 2014



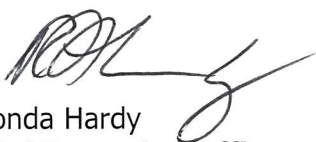
**shire of  
kalamunda**

## NOTICE OF MEETING CORPORATE & COMMUNITY SERVICES COMMITTEE

Dear Councillors

Notice is hereby given that the next meeting of the Corporate & Community Services Committee will be held in the Council Chambers, Administration Centre, 2 Railway Road, Kalamunda on **Tuesday 22 April 2014 at 6.30pm.**

Dinner will be served prior to the meeting, at 5.30pm.



Rhonda Hardy  
**Chief Executive Officer**  
16 April 2014

## Our Vision and Our Values

### Our Vision

The Shire will have a diversity of lifestyle and people. It will take pride in caring for the natural, social, cultural and built environments and provide opportunities for people of all ages.

### Our Core Values

**Service** – We deliver excellent service by actively engaging and listening to each other.

**Respect** – We trust and respect each other by valuing our difference, communicating openly and showing integrity in all we do.

**Diversity** – We challenge ourselves by keeping our minds open and looking for all possibilities and opportunities.

**Ethics** – We provide honest, open, equitable and responsive leadership by demonstrating high standards of ethical behavior.

### Our Aspirational Values

**Prosperity** – We will ensure our Shire has a robust economy through a mixture of industrial and commercial development.

**Harmony** – We will retain our natural assets in balance with our built environment.

**Courage** – We take risks that are calculated to lead us to a bold new future.

**Creativity** – We create and innovate to improve all we do.

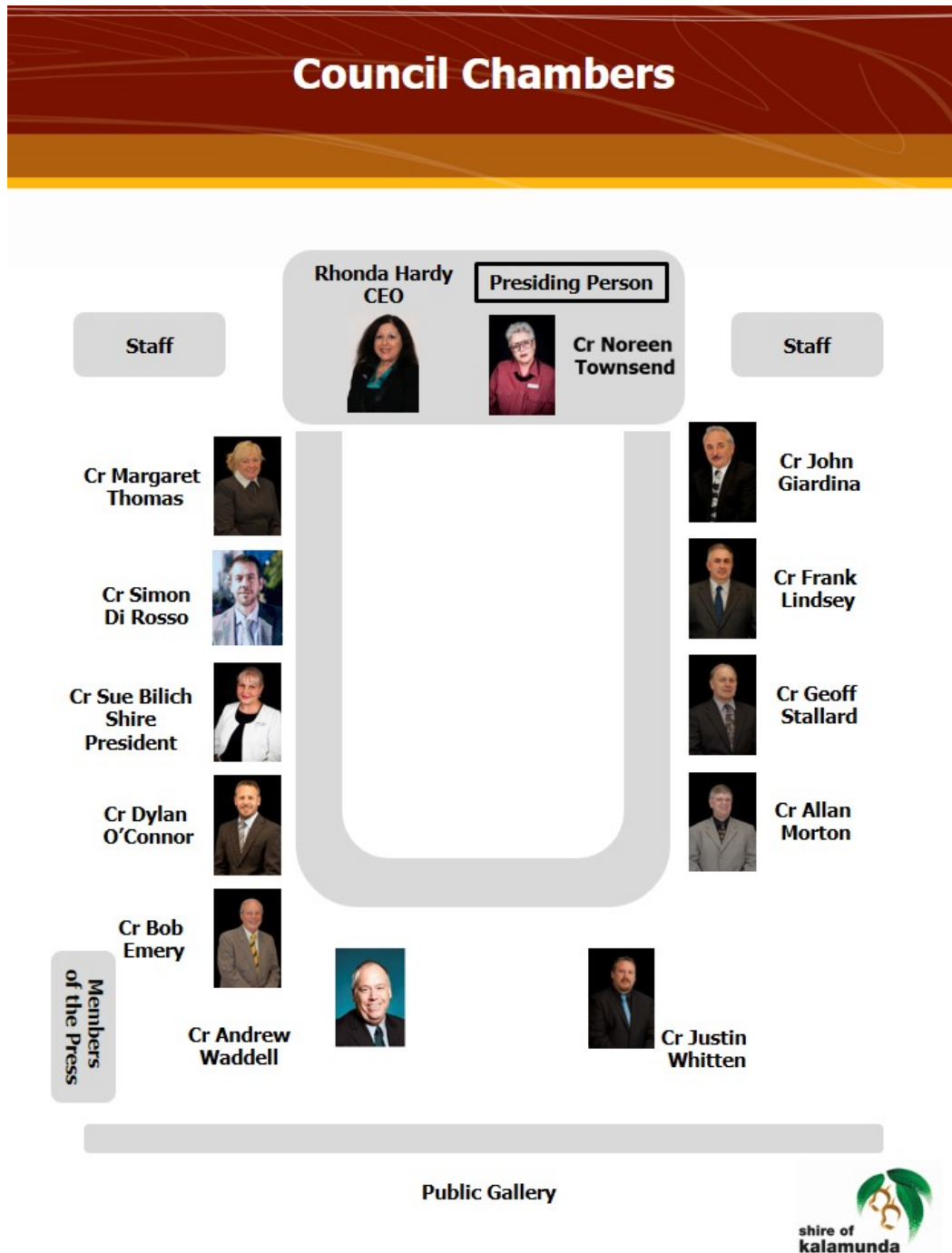


## INFORMATION FOR THE PUBLIC ATTENDING COMMITTEE OR COUNCIL MEETINGS

Welcome to this evening's meeting. The following information is provided on the meeting and matters which may affect members of the public.

If you have any queries related to procedural matters, please contact a member of staff.

### Council Chambers – Seating Layout



## **Standing Committee Meetings – Procedures**

1. Standing Committees are open to the public, except for Confidential Items listed on the Agenda.
2. Shire of Kalamunda Standing Committees have a membership of all 12 Councillors.
3. Unless otherwise advised a Standing Committee makes recommendations only to the next scheduled Ordinary Council Meeting.
4. Members of the public who are unfamiliar with meeting proceedings are invited to seek advice prior to the meeting from a Shire Staff Member.
5. Members of the public are able to ask questions at a Standing Committee Meeting during Public Question Time. The questions should be related to the purposes of the Standing Committee.
6. Members of the public wishing to make a comment on any Agenda item may request to do so by advising staff prior to commencement of the Standing Committee Meeting.
7. Comment from members of the public on any item of the Agenda is usually limited to three minutes and should address the Recommendations at the conclusion of the report.
8. To facilitate the smooth running of the meeting, silence is to be observed in the public gallery at all times except for Public Question Time.
9. All other arrangements are in general accordance with Council's Standing Orders, the Policies and decision of person chairing the Committee Meeting.

## **Emergency Procedures**

**Please view the position of the Exits, Fire Extinguishers and Outdoor Assembly Area as displayed on the wall of Council Chambers.**

**In case of an emergency follow the instructions given by Council Personnel.**

**We ask that you do not move your vehicle as this could potentially block access for emergency services vehicles.**

**Please remain at the assembly point until advised it is safe to leave.**

## INDEX

1.0	OFFICIAL OPENING.....	6
2.0	ATTENDANCE, APOLOGIES AND LEAVE OF ABSENCE PREVIOUSLY APPROVED .....	6
3.0	PUBLIC QUESTION TIME .....	6
4.0	PETITIONS/DEPUTATIONS .....	6
5.0	CONFIRMATION OF MINUTES OF PREVIOUS MEETING.....	6
6.0	ANNOUNCEMENTS BY THE PRESIDING MEMBER WITHOUT DISCUSSION.....	6
7.0	MATTERS FOR WHICH MEETING MAY BE CLOSED .....	6
8.0	DISCLOSURE OF INTERESTS.....	6
9.0	REPORTS TO COUNCIL .....	7
	13. DEBTORS AND CREDITORS REPORT FOR THE PERIOD ENDED 31 MARCH 2014 .....	8
	14. RATES DEBTORS REPORT FOR THE PERIOD ENDED 31 MARCH 2014.....	55
10.0	MOTIONS OF WHICH PREVIOUS NOTICE HAS BEEN GIVEN .....	60
11.0	QUESTIONS BY MEMBERS WITHOUT NOTICE .....	60
12.0	QUESTIONS BY MEMBERS OF WHICH DUE NOTICE HAS BEEN GIVEN .....	60
13.0	URGENT BUSINESS APPROVED BY THE PRESIDING MEMBER OR BY DECISION.....	60
14.0	MEETING CLOSED TO THE PUBLIC.....	60
15.0	CLOSURE .....	60

---

## AGENDA

### 1.0 OFFICIAL OPENING

### 2.0 ATTENDANCE, APOLOGIES AND LEAVE OF ABSENCE PREVIOUSLY APPROVED

Cr Dylan O'Connor, leave of absence  
Cr Frank Lindsey, leave of absence  
Cr Justin Whitten, leave of absence  
Cr Margaret Thomas, apology

### 3.0 PUBLIC QUESTION TIME

A period of not less than 15 minutes is provided to allow questions from the gallery on matters relating to the functions of this Committee. For the purposes of Minuting, these questions and answers will be summarised.

### 4.0 PETITIONS/DEPUTATIONS

### 5.0 CONFIRMATION OF MINUTES OF PREVIOUS MEETING

5.1 That the Minutes of the Corporate & Community Services Committee Meeting held on 17 March 2014 are confirmed as a true and accurate record of the proceedings.

Moved:

Seconded:

Vote:

#### Statement by Presiding Member

"On the basis of the above Motion, I now sign the minutes as a true and accurate record of the meeting of 17 March 2014".

### 6.0 ANNOUNCEMENTS BY THE PRESIDING MEMBER WITHOUT DISCUSSION

### 7.0 MATTERS FOR WHICH MEETING MAY BE CLOSED

7.1 Nil.

### 8.0 DISCLOSURE OF INTERESTS

#### 8.1 Disclosure of Financial and Proximity Interests

a. Members must disclose the nature of their interest in matters to be discussed at the meeting. (Sections 5.60B and 5.65 of the *Local Government Act 1995*.)

- b. Employees must disclose the nature of their interest in reports or advice when giving the report or advice to the meeting. (Sections 5.70 and 5.71 of the *Local Government Act 1995*.)

## 8.2 **Disclosure of Interest Affecting Impartiality**

- a. Members and staff must disclose their interest in matters to be discussed at the meeting in respect of which the member or employee had given or will give advice.

## 9.0 **REPORTS TO COUNCIL**

Please Note: declaration of financial/conflict of interests to be recorded prior to dealing with each item.

---

**Declaration of financial / conflict of interests to be recorded prior to dealing with each item.**

**13. Debtors and Creditors Report for the Period Ended 31 March 2014**

Previous Items	N/A
Responsible Officer	Director Corporate Services
Service Area	Finance
File Reference	FI-CRS-002
Applicant	N/A
Owner	N/A
Attachment 1	Creditors Payment Listing for the month of March 2014
Attachment 2	Summary of Debtors for the month of March 2014
Attachment 3	Summary of Creditors for the month of March 2014

**PURPOSE**

1. To receive the Creditors Payment Listing for the month of March 2014. (Attachment 1)
2. To receive the monthly report on Debtors and Creditors (Attachments 2 and 3).

**BACKGROUND**

3. Council has requested reports detailing outstanding debtors and creditors on a monthly basis.

**DETAILS**

**Debtors**

4. Invoices over 30 days total \$31,796.47, debts of significance are:
  - Boldsilk Holdings Pty Ltd \$4,093.20 – Private Works - Reminder sent;
  - Kalamunda Club \$17,109.86 – Loan 219 – Reminder sent;
  - Kalamunda Cricket Club \$1,751.09 – Operational Expenses – Reminder sent;
  - Western Australian Planning Commission \$3,300.00 – Bush Hazard Assessment. Invoice is under query by the debtor, and;
  - Zig Zag Café \$3,180.25 – Lease/Operational Expenses. Payment arrangement is in place.
5. Invoices over 60 days total \$3,248.78, debts of significance are:
  - Zig Zag Café \$1,835.63 – Lease/Operational Expenses - Payment arrangement in place.



6. Invoices over 90 days total \$42,207.28, debts of significance are:
- Foothills Netball Association \$4,559.57 – Loan / Operational Expenses – under management by the Shire;
  - Forrestfield United Soccer Club \$5,923.97 – Loan – Loan arrangement being negotiated with Club;
  - Lesmurdie Tennis Club \$24,000 – Contribution to Extension – given an extension until 1 May 2014; and
  - Western Power \$6,650.75 – Private Works – Contractor investigating works to determine who is responsible for the damage.

### Creditors

7. Payments totalling \$4,612,356.67 were made during the month of March 2014. Standard payment terms are 30 days from the end of the month, with local businesses and contractors on 14 day terms.
8. Significant Municipal payments made in the month were:

Supplier	Purpose	\$
Australian Tax Office	PAYG payments	306,747.54
Beaver Tree Services	Tree maintenance and pruning – various locations	35,142.25
Chris Brook Builder	Public Toilet – History Village	20,162.12
Contraflow	Traffic management for various locations	42,222.95
Department of Fire and Emergency Services (DFES)	3rd Quarter Emergency Services Levy	1,475,801.78
Devco Holdings Pty Ltd	KADS Theatre – remediation works on the roof	183,284.31
DMC Cleaning	Cleaning various buildings – 2 months	50,765.53
Dunn & Bradstreet (Aus) Pty Ltd	Debt collection fees for rates	82,164.15
Eastern Metropolitan Regional Council	Domestic/Waste Charges and disposal fees	271,436.69
Perth Waste Pty Ltd	Weekly collection and disposal of waste services	235,998.40
Synergy	Power charges	162,139.90
WA Local Government Superannuation Plan	Superannuation contributions	174,495.51
West Australian Treasury Corporation	Loan instalment payments – various	282,122.96

9. These payments total \$3,319,484.10 and represent 72% of all payments for the month.

### Trust Account Payments

10. The Trust Accounts maintained by the Shire relate to the following types:

- CELL 9 Trust
- Forrestfield Industrial Area
- POS Trust
- BCITF Levy
- Building Licence Levy
- Unclaimed Monies

11. The following payments were made from the Trust Accounts in the month of March 2014.

Cell 9 Trust		Amount (\$)
Date	Description	
4/3/2014	Shire of Kalamunda – project management costs for January 2014	984.50
6/3/2014	McKay – supply and install fencing at Hale Rd, Wattle Grove	70,037.00
6/3/2014	David Willis & Associates – consulting engineering for Woodlupine Brook	13,200.00
10/3/2014	Shire of Kalamunda – project management costs for February 2014	3,257.21
18/3/2014	McLeods – Acquisition deed – road reserve Lot 29 Hale Rd, Wattle Grove	412.78
BCITF Levy		Amount (\$)
Date	Description	
5/3/2014	Building and Construct Industry – February 2014	18,632.80
Building Licence Levy		Amount (\$)
Date	Description	
31/3/2014	Building Commission – March 2014 levies	12,693.06
Forrestfield Industrial Area Trust		Amount (\$)
Date	Description	
10/3/2014	Shire of Kalamunda – project management costs for February 2014	1,185.25
27/3/2014	Shire of Kalamunda – project management costs for March 2014	1,487.75

---

## **STATUTORY AND LEGAL CONSIDERATIONS**

12. In accordance with the requirements of the *Local Government (Financial Management) Regulations 1996 (Regulation 13)* a list of accounts paid by the Chief Executive Officer is to be prepared each month and presented in the manner required as per the Regulation.

## **POLICY CONSIDERATIONS**

13. Nil.

## **COMMUNITY ENGAGEMENT REQUIREMENTS**

14. Nil.

## **FINANCIAL CONSIDERATIONS**

15. Nil.

## **STRATEGIC COMMUNITY PLAN**

### **Strategic Planning Alignment**

16. *Kalamunda Advancing: Strategic Community Plan to 2023*

OBJECTIVE 6.8 - To ensure financial sustainability through the implementation of effective financial management, systems and plans.

Strategy 6.8.4 Provide effective financial services to support the Shire's operations and to meet sustainability planning, reporting and accountability requirements.

## **SUSTAINABILITY**

### **Social Implications**

17. Nil.

### **Economic Implications**

18. Nil.

### **Environmental Implications**

19. Nil.

---

**RISK MANAGEMENT CONSIDERATIONS**

**Debtors**

20.

<b>Risk</b>	<b>Likelihood</b>	<b>Consequence</b>	<b>Rating</b>	<b>Action/Strategy</b>
The Shire is exposed to the potential risk of the debtor failing to make payments which it is obligated to do. This will result in the disruption of cash flows and increased collection costs. The loss may be complete or partial and can arise in a number of circumstances.	Possible	Minor	Medium	Ensure debt collections is rigorously managed.

**Creditors**

21.

<b>Risk</b>	<b>Likelihood</b>	<b>Consequence</b>	<b>Rating</b>	<b>Action/Strategy</b>
If the Shire defaults on payment to a creditor, the Shire runs the risk of a negative credit record resulting in potential future disruptions on cash flows and ability to obtain credit.	Unlikely	Major	Medium	Ensure all disputes are resolved in time.  Maximise payment terms to improve cash flow.

**OFFICER COMMENT**

22. Nil.

---

<b>Voting Requirements: Simple Majority</b>
---

---

**OFFICER RECOMMENDATION (C&C 13/2014)**

That Council:

1. Receives the list of payments made from the Municipal Accounts in March 2014 (Attachment 1) in accordance with the requirements of the *Local Government (Financial Management) Regulations 1996 (Regulation 12)*.
2. Receives the list of payments made from the Trust Accounts in March 2014 as noted in point 11 above in accordance with the requirements of the *Local Government (Financial Management) Regulations 1996 (Regulation 12)*.
3. Receives the outstanding debtors (Attachment 2) and creditors (Attachment 3) reports for the month March 2014.

Moved:

Seconded:

Vote:

**Attachment 1**

<b>Chq/EFT</b>	<b>Date</b>	<b>Name</b>	<b>Description</b>	<b>Amount</b>
698	06/03/2014	LES MILLS AUSTRALIA	MONTHLY LICENCE FEE	1000.54
699	07/03/2014	WESTERN AUSTRALIAN TREASURY CORPORATION	LOAN NO 207 INTEREST PAYMENT	1138.21
700	07/03/2014	WESTERN AUSTRALIAN TREASURY CORPORATION	LOAN NO 225 FIXED COMPONENT	51954.61
701	11/03/2014	IINET TECHNOLOGIES PTY LTD	INTERNET ACCESS	829.00
702	12/03/2014	AUSTRALIAN TAXATION OFFICE	TAXATION	155234.29
703	12/03/2014	COMMONWEALTH BANK - BUSINESS CARD	BUSINESS CORPORATE CARD - VARIOUS PURCHASES:  HACC ACTIVITY OFFICER - \$588.50 LIBRARY SERVICES TEAM LEADER - \$907.49 HACC ACTIVITY OFFICER - \$126.33 HEALTHY COMMUNITIES TEAM LEADER - \$185.16 FUNCTIONS CO-ORDINATOR - \$2877.06 CO-ORDINATOR PROCUREMENT - \$6976.43 HACC ACTIVITY OFFICER - \$23.33 HACC ACTIVITY OFFICER - \$990.48 HACC ACTIVITY OFFICER - \$618.00 MANAGER HR - \$730.29 HACC ACTIVITY OFFICER - \$572.00	14595.07
704	13/03/2014	WESTERN AUSTRALIAN TREASURY CORPORATION	LOAN NO 199 INTEREST PAYMENT	2886.90
705	17/03/2014	WESTERN AUSTRALIAN TREASURY CORPORATION	LOAN NO 227 FIXED COMPONENT	78217.48
706	17/03/2014	WESTERN AUSTRALIAN TREASURY CORPORATION	LOAN NO 228 FIXED COMPONENT	48621.67

<b>Chq/EFT</b>	<b>Date</b>	<b>Name</b>	<b>Description</b>	<b>Amount</b>
707	20/03/2014	WESTERN AUSTRALIAN TREASURY CORPORATION	LOAN NO 224 FIXED COMPONENT	99304.09
708	26/03/2014	AUSTRALIAN TAXATION OFFICE	TAXATION	151513.25
EFT34720- EFT34909		EFT PAYMENTS CANCELLED DUE TO SYSTEM MALFUNCTION		
EFT34910	13/03/2014	MOTORCHARGE - WRIGHT EXPRESS FUEL CARDS AUSTRALIA LTD	FUEL - PERIOD ENDING 28 FEBRUARY 2014	7214.58
EFT34911	13/03/2014	NEVERFAIL SPRINGWATER LTD (KALA LIB)	BOTTLED WATER SUPPLIES / MAINTENANCE	126.90
EFT34912	13/03/2014	KALAMUNDA GLASS & WINDSCREENS ON WHEELS	GLASS REPAIRS / MAINTENANCE FOR VARIOUS LOCATIONS	370.00
EFT34913	13/03/2014	CUSTOMER SERVICE BENCHMARKING AUSTRALIA PTY LTD	REGISTRATION FOR 1 STAFF TO ATTEND CUSTOMER SERVICE TRAINING SEMINAR	484.00
EFT34914	13/03/2014	FREESTYLE NOW	ENTERTAINMENT - CORMYBIA FESTIVAL 2014	1980.00
EFT34915	13/03/2014	FAIRFAX RADIO NETWORK PTY LTD	RADIO ADVERTISING ON 6PR AND 96FM	6747.40
EFT34916	13/03/2014	CABCHARGE AUSTRALIA LIMITED	CABCHARGE FEES	6.00
EFT34917	13/03/2014	AIR-BORN AMUSEMENTS	AMUSEMENTS RIDES - CORYMBIA FESTIVAL	4092.00
EFT34918	13/03/2014	A CLASS DISPLAYS	BROCHURE HOLDERS FOR SAFETY LEAFLETS	150.48
EFT34919	13/03/2014	WASTE MANAGEMENT ASSOCIATION OF AUSTRALIA	2014 MEMBERSHIP RENEWAL NOTICE	330.00
EFT34920	13/03/2014	ARTHRITIS FOUNDATION OF WA	BOND REFUND FOR THE USE OF THE SEMINAR ROOM AT THE ZIG ZAG CULTURAL CENTRE	300.00
EFT34921	13/03/2014	SHERICH BUILDING SURVEYING & BUILDING SERVICES	FEE PROPOSAL- CERTIFICATE OF DESIGN COMPLIANCE TO WALLISTON TRANSFER STATION FOR SMALL ADDITION TO AMENITIES BUILDING	495.00
EFT34922	13/03/2014	MACQUARIE EQUIPMENT FINANCE PTY LTD	LEASE OF IT EQUIPMENT - INSTALLMENT	10367.53
EFT34923	13/03/2014	TOP OF THE LADDER GUTTER CLEANING	GUTTER CLEANING SERVICES FOR VARIOUS LOCATIONS	946.00

<b>Chq/EFT</b>	<b>Date</b>	<b>Name</b>	<b>Description</b>	<b>Amount</b>
EFT34924	13/03/2014	BEES HIRE & SALES	SUPPLY AND ERECT SCAFFOLD AND OTHER HIRE EQUIPMENT FOR VARIOUS LOCATIONS	957.11
EFT34925	13/03/2014	VIP CARPET AND UPHOLSTERY CLEANING SERVICE	CARPET CLEANING AT VARIOUS LOCATIONS	2202.00
EFT34926	13/03/2014	EVANGELINE CHRISTINA MEATH	TRAVEL COMMUNITY VISITORS SCHEME REFUND	8.00
EFT34927	13/03/2014	ALBERT ALEXANDER CARSE	SALE OF ARTWORK - CONNECTING COMMUNITIES EXHIBITION	210.00
EFT34928		EFT PAYMENT CANCELLED		
EFT34929	13/03/2014	MARISA ARENA	FOOTPATH DEPOSIT REFUND	700.00
EFT34930	13/03/2014	NULSEN HAVEN ASSOCIATION	SALE OF ARTWORK - CONNECTING COMMUNITIES EXHIBITION FOR VARIOUS ARTISTS	927.50
EFT34931	13/03/2014	ADAM WYLLYAMS	PLANNING APPLICATION FEE REFUND	147.00
EFT34932	13/03/2014	PATRICIA ANN O'TOOLE	PART DOG REGISTRATION FEE REFUND	42.50
EFT34933	13/03/2014	PENNY MADDISON	SALE OF ARTWORK - CONNECTING COMMUNITIES EXHIBITION	175.00
EFT34934	13/03/2014	CARMEL VALLEY CHOCOLATES	PAYMENT TO CONSIGNMENT SUPPLIER FOR GOODS SOLD AT THE ZIG ZAG CULTURAL CENTRE - 01/02/14 - 28/02/14	12.60
EFT34935	13/03/2014	BRUCE COWEN	PAYMENT TO CONSIGNMENT SUPPLIER FOR GOODS SOLD AT THE ZIG ZAG CULTURAL CENTRE - 01/02/14 - 28/02/14	63.00
EFT34936	13/03/2014	BEVERLEY TARLING	SALE OF ARTWORK - CONNECTING COMMUNITIES EXHIBITION	119.00
EFT34937	13/03/2014	GILL BAXTER	PAYMENT TO CONSIGNMENT SUPPLIER FOR GOODS SOLD AT THE ZIG ZAG CULTURAL CENTRE - 01/02/14 - 28/02/14	24.50
EFT34938	13/03/2014	DAVID & KATHLEEN MASTERS	RATES REFUND	311.22
EFT34939	13/03/2014	PAULINE TONKIN	FALLS FARM GARDEN REIMBURSEMENT	95.60



<b>Chq/EFT</b>	<b>Date</b>	<b>Name</b>	<b>Description</b>	<b>Amount</b>
EFT34940	13/03/2014	MAIDA VALE BAPTIST CHURCH	CONTRIBUTION TO CAROLS ON THE GREEN - 01 DECEMBER 2013	4100.00
EFT34941	13/03/2014	WA LOCAL GOVERNMENT SUPERANNUATION PLAN	SUPERANNUATION CONTRIBUTIONS	85451.45
EFT34942	13/03/2014	SHIRE OF KALAMUNDA STAFF SOCIAL CLUB	PAYROLL DEDUCTIONS	280.00
EFT34943	13/03/2014	CHILD SUPPORT AGENCY	PAYROLL DEDUCTIONS	847.88
EFT34944	13/03/2014	AUSTRALIA POST	COUNTER BILLPAY TRANSACTION FEES	2036.54
EFT34945	13/03/2014	COVS PARTS PTY LTD	PLANT / VEHICLE PARTS	577.16
EFT34946	13/03/2014	LANDGATE	SERVICE FEE - EXTRACTION OF RECTIFIED AERIAL IMAGE	484.00
EFT34947	13/03/2014	GULLY VIEWS NEWSAGENCY	SUBSCRIPTIONS & NEWSPAPERS FOR VARIOUS LOCATIONS	110.10
EFT34948	13/03/2014	KALAMUNDA AUTO ELECTRICS	PLANT / VEHICLE PARTS	5602.30
EFT34949	13/03/2014	MCLEODS BARRISTERS & SOLICITORS	LEGAL EXPENSES	337.83
EFT34950	13/03/2014	MIDWASTE - TRANSPACIFIC CLEANAWAY PTY LTD	WASTE / RECYCLING SERVICES	568.06
EFT34951	13/03/2014	LANDGATE - VALUATIONS	VALUATIONS FOR VARIOUS LOCATIONS	759.62
EFT34952	13/03/2014	WALKERS HARDWARE (MITRE 10)	HARDWARE SUPPLIES	189.41
EFT34953	13/03/2014	MCKAY EARTHMOVING PTY LTD	PLANT EQUIPMENT AND OPERATOR HIRE FOR VARIOUS LOCATIONS	17446.17
EFT34954	13/03/2014	A & S HILL	ELECTRICIAL REPAIRS / MAINTENANCE FOR VARIOUS LOCATIONS	34664.17
EFT34955	13/03/2014	FASTA COURIERS	COURIER FEES	401.60
EFT34956	13/03/2014	THE WATERSHED WATER SYSTEMS	RETICULATION PARTS FOR VARIOUS RESERVES	1694.00
EFT34957	13/03/2014	BRADOCK PODIATRY SERVICES PTY LTD	PODIATRY SERVICES AT JACK HEALEY CENTRE	1038.80
EFT34958	13/03/2014	DAYNITE TOWING SERVICE (WA) PTY LTD (FORMERLEY MOBITOW PTY LTD)	TOWING SERVICES	244.20
EFT34959	13/03/2014	KALA BOB KATS PTY LTD	PLANT EQUIPMENT AND OPERATOR HIRE FOR VARIOUS LOCATIONS	1806.20

<b>Chq/EFT</b>	<b>Date</b>	<b>Name</b>	<b>Description</b>	<b>Amount</b>
EFT34960	13/03/2014	GRIMES CONTRACTING PTY LTD	CONTRACTOR BUILDING MAINTENANCE FOR VARIOUS BUILDINGS	9923.13
EFT34961	13/03/2014	STAPLES AUSTRALIA PTY LTD(CORPORATE EXPRESS AUSTRALIA LTD)	STATIONERY / OFFICE SUPPLIES	108.90
EFT34962	13/03/2014	FOODWORKS FRESH FORRESTFIELD	GROCERY SUPPLIES	1580.73
EFT34963	13/03/2014	LESMURDIE SENIOR HIGH SCHOOL	CONTRIBUTION TOWARDS LESMURDIE COMMUNITY LIBRARY COSTS AS PER CONTRACT - PERIOD FROM JULY - DECEMBER 2013	5100.88
EFT34964	13/03/2014	MACDONALD JOHNSTON ENGINEERING	PLANT / VEHICLE PARTS	1259.82
EFT34965	13/03/2014	LO-GO APPOINTMENTS	HIRE OF TEMPORARY STAFF FOR DEPOT / ADMIN	4303.20
EFT34966	13/03/2014	STAFF LINK PERSONNEL	HIRE OF TEMPORARY STAFF FOR DEPOT / ADMIN	11441.57
EFT34967	13/03/2014	FLEXI STAFF PTY.LTD.	HIRE OF TEMPORARY STAFF FOR DEPOT / ADMIN	543.18
EFT34968	13/03/2014	GREEN SKILLS (ECOJOBS)	LABOUR ASSISTANCE FOR TREE PLANTING	346.50
EFT34969	13/03/2014	LIMECRETE PTY LTD	SUPPLY OF ROAD MATERIALS FOR VARIOUS LOCATIONS	587.00
EFT34970	13/03/2014	AIR LIQUIDE WA PTY LTD	GAS BOTTLE FACILITY FEE	129.47
EFT34971	13/03/2014	CHUBB FIRE & SECURITY PTY LTD	INSTALLATION OF CCTV CAMERAS STOLEN FROM ADMIN BUILDING AND KALAMUNDA LIBRARY	13866.60
EFT34972	13/03/2014	KALAMUNDA & DISTRICTS HISTORICAL SOCIETY	PAYMENT TO CONSIGNMENT SUPPLIER FOR GOODS SOLD AT THE ZIG ZAG CULTURAL CENTRE - 01/02/14 - 28/02/14	92.75
EFT34973	13/03/2014	SEBASTIAN BUTCHERS	CATERING SUPPLIES	121.59
EFT34974	13/03/2014	CRABBS KALAMUNDA (IGA)	GROCERY SUPPLIES	959.76
EFT34975	13/03/2014	WESTRAL HOME IMPROVEMENTS	SUPPLY AND INSTALLATION OF BLINDS AT KALAMUNDA LIBRARY	2389.00
EFT34976	13/03/2014	KALAMUNDA VOLUNTEER BUSHFIRE BRIGADE	REIMBURSEMENT COSTS FOR VOLUNTEER BUSHFIRE BRIGADE	283.01
EFT34977	13/03/2014	WATTLE GROVE VETERINARY HOSPITAL	VETERINARY FEES	550.00
EFT34978	13/03/2014	HOME GROUP WA PTY LTD	FOOTPATH DEPOSIT REFUND	1200.00

<b>Chq/EFT</b>	<b>Date</b>	<b>Name</b>	<b>Description</b>	<b>Amount</b>
EFT34979	13/03/2014	ANDREW & GAYNOR DAWSON	RETURN OF MAINTENANCE BOND - WAPC 102760 - PART LOT 61 HALE ROAD FORRESTFIELD - DAWSON NURSERY STAGE 2	9232.00
EFT34980	13/03/2014	HELEN ARMSTRONG & ASSOCIATES (T/AS WAXING LYRICAL CANDLES)	PAYMENT TO CONSIGNMENT SUPPLIER FOR GOODS SOLD AT THE ZIG ZAG CULTURAL CENTRE - 01/02/14 - 28/02/14	14.00
EFT34981	13/03/2014	HAWLEY'S BOBCAT SERVICE	PLANT EQUIPMENT AND OPERATOR HIRE FOR VARIOUS LOCATIONS	6699.00
EFT34982	13/03/2014	FORRESTFIELD NEWSPAPERS & MAGAZINES DELIVERY	NEWSPAPERS / MAGAZINES DELIVERIES FOR VARIOUS LOCATIONS	74.00
EFT34983	13/03/2014	DEPARTMENT OF FIRE AND EMERGENCY SERVICES (DFES)	2013/2014 EMERGENCY SERVICES LEVY - QUARTER 3 CONTRIBUTION	1456923.84
EFT34984	13/03/2014	DICK SMITH ELECTRONICS	ELECTRICAL SUPPLIES	298.96
EFT34985	13/03/2014	HILL TOP GROUP PTY	CONTRACTOR BUILDING MAINTENANCE FOR VARIOUS BUILDINGS	6489.13
EFT34986	13/03/2014	INSTITUTE OF PUBLIC WORKS ENGINEERING AUSTRALIA WA	REGISTRATION FOR VARIOUS STAFF TO ATTEND IPWEA CONFERENCE 2014	2700.00
EFT34987	13/03/2014	TRILOGY SERVICING PTY LTD	AIRCONDITIONING MAINTENANCE / REPAIRS FOR VARIOUS LOCATIONS	3258.13
EFT34988	13/03/2014	SOROPTIMISTS INTERNATIONAL OF DARLING RANGE	KEY BOND REFUND	50.00
EFT34989	13/03/2014	DEBBIE JOSE JEWELLERY	PAYMENT TO CONSIGNMENT SUPPLIER FOR GOODS SOLD AT THE ZIG ZAG CULTURAL CENTRE - 01/02/14 - 28/02/14	80.50
EFT34990	13/03/2014	WEST AUSTRALIAN NEWSPAPERS HOLDINGS LTD	ARTS DIRECTORY ADVERTISING - ZIG ZAG GALLERY	53.55
EFT34991	13/03/2014	MCDOWALL AFFLECK PTY LTD	ENGINEERING DESIGN & CERTIFICATION TO KADS THEATRE PROJECT	572.00

Chq/EFT	Date	Name	Description	Amount
EFT34992	13/03/2014	KANYANA WILDLIFE REHABILITATION CENTRE INC	PAYMENT TO CONSIGNMENT SUPPLIER FOR GOODS SOLD AT THE ZIG ZAG CULTURAL CENTRE - 01/02/14 - 28/02/14	30.40
EFT34993	13/03/2014	CAROLYN MITCHELL	FOOTPATH DEPOSIT REFUND	1200.00
EFT34994	13/03/2014	BIG W (AR W1.C3.U.07)	GYM TOWELS FOR HARTFIELD PARK RECREATION CENTRE-GOODS FOR RESALE	199.50
EFT34995	13/03/2014	DUN & BRADSTREET ( AUSTRALIA ) PTY LTD	DEBT COLLECTION FEES FOR RATES	82164.15
EFT34996	13/03/2014	ALPHA STUDIOS	PAYMENT TO CONSIGNMENT SUPPLIER FOR GOODS SOLD AT THE ZIG ZAG CULTURAL CENTRE - 01/02/14 - 28/02/14	14.00
EFT34997	13/03/2014	C. KAY (RURAL CINEMA)	CINEMA HIRE - CORYMBIA MOVIE NIGHT	2300.00
EFT34998	13/03/2014	FOOD TECHNOLOGY SERVICES PTY LTD	HIRE OF TEMPORARY STAFF FOR HEALTH DEPARTMENT	3078.63
EFT34999	13/03/2014	PICKERING BROOK HERITAGE GROUP	PAYMENT TO CONSIGNMENT SUPPLIER FOR GOODS SOLD AT THE ZIG ZAG CULTURAL CENTRE - 01/02/14 - 28/02/14	14.00
EFT35000	13/03/2014	SWAN TOWING SERVICE PTY LTD	TOWING SERVICES	121.00
EFT35001	13/03/2014	CARROODA & SANSOM PTY LTD	FOOTPATH DEPOSIT REFUNDS	4000.00
EFT35002	13/03/2014	SPECIALISED SECURITY SHREDDING	SECURE DOCUMENT DISPOSAL BIN REMOVAL AND REPLACEMENT	33.00
EFT35003	13/03/2014	CEDAR HOMES	SEPTIC TANK APPLICATION & INSPECTION FEE REFUND	226.00
EFT35004	13/03/2014	HERTZ AUSTRALIA PTY LTD	HIRE OF 4X4 UTILITY VEHICLE FOR FIRE HAZARD INSPECTOR	2049.30
EFT35005		EFT PAYMENT CANCELLED		
EFT35006	13/03/2014	PLANNING INSTITUTE AUSTRALIA	REGISTRATION FOR 4 STAFF TO ATTEND REGIONAL PLANNING SYMPOSIUM 2014	860.00
EFT35007	13/03/2014	TWO WAY HIRE SERVICES PTY LTD	TWO WAY RADIO HIRE - CORYMBIA FESTIVAL 2014	374.00

<b>Chq/EFT</b>	<b>Date</b>	<b>Name</b>	<b>Description</b>	<b>Amount</b>
EFT35008	13/03/2014	WOOLWORTHS LIMITED	GROCERY SUPPLIES	1382.13
EFT35009	13/03/2014	AFFORDABLE LIVING HOMES	FOOTPATH DEPOSIT REFUND	1000.00
EFT35010	13/03/2014	FORRESTFIELD TENNIS CLUB (INC)	FORRESTFIELD TENNIS CLUB HIRE FEES 1/2/14 - 28/2/14	178.00
EFT35011	13/03/2014	HILLS GAS SUPPLY	SUPPLY OF BOTTLED GAS FOR VARIOUS LOCATIONS	186.00
EFT35012	13/03/2014	WATTLE GROVE PLANT FARM	GARDEN / VERGE SUPPLIES	220.00
EFT35013	13/03/2014	MAIDA VALE DELIVERY ROUND	PAPER AND MAGAZINES DELIVERIES FOR HIGH WYCOMBE LIBRARY	74.25
EFT35014	13/03/2014	EASTERN REGION SECURITY	SECURITY SERVICES TO VARIOUS SHIRE BUILDINGS	6510.21
EFT35015	13/03/2014	G.D.CHARLTON	PODIATRY SERVICES AT JACK HEALEY CENTRE	742.00
EFT35016	13/03/2014	SECURE TRAFFIC	TRAFFIC MANAGEMENT FOR VARIOUS LOCATIONS	16062.75
EFT35017	13/03/2014	CASTLEDINE & CASTLEDINE DESIGNERS	BOND REFUND FOR THE USE OF THE GALLERY AT THE ZIG ZAG CULTURAL CENTRE	500.00
EFT35018	13/03/2014	HAYLEY CONNOLLY	CROSSOVER CONTRIBUTION	385.00
EFT35019	13/03/2014	KATHERINE WILLIAMS	HALL AND KEY BOND REFUND	550.00
EFT35020	13/03/2014	SUSAN BRYAN	SALE OF ARTWORK - CONNECTING COMMUNITIES EXHIBITION	56.00
EFT35021	13/03/2014	EASIFLEET MANAGEMENT	STAFF CONTRIBUTIONS TO NOVATED LEASES	9578.80
EFT35022	13/03/2014	NATALIE WARBURTON - ANATOMY DESIGNS	PAYMENT TO CONSIGNMENT SUPPLIER FOR GOODS SOLD AT THE ZIG ZAG CULTURAL CENTRE - 01/02/14 - 28/02/14	4.90
EFT35023	13/03/2014	ALLAN DAVIES & TREVOR CHUDLEIGH ARCHITECTS	ARCHITECTURAL SERVICES FOR KADS THEATRE ALTERATIONS AND ADDITIONS	2909.50
EFT35024	13/03/2014	MARCUS & PATRICIA KEELEY	FOOTPATH DEPOSIT REFUND	1000.00
EFT35025	13/03/2014	AUSTRALIAN SUPERANNUATION	SUPERANNUATION CONTRIBUTIONS	1247.76

<b>Chq/EFT</b>	<b>Date</b>	<b>Name</b>	<b>Description</b>	<b>Amount</b>
EFT35026	13/03/2014	MADE 4 YOU (LYGIA)	PAYMENT TO CONSIGNMENT SUPPLIER FOR GOODS SOLD AT THE ZIG ZAG CULTURAL CENTRE - 01/02/14 - 28/02/14	49.00
EFT35027	13/03/2014	REDINK HOMES PTY LTD	FOOTPATH DEPOSIT REFUND	1000.00
EFT35028	13/03/2014	ROSE SMART	MAINTAIN ROSE BEDS AT VARIOUS LOCATIONS	986.00
EFT35029	13/03/2014	CARDILE INTERNATIONAL FIREWORKS PTY LTD	FIREWORKS DISPLAY - CORYMBIA FESTIVAL 2014	9724.00
EFT35030	13/03/2014	CARNIVAL AMUSEMENTS	AMUSEMENT RIDES AND ATTRACTIONS - CORYMBIA FESTIVAL 2014	6325.00
EFT35031	13/03/2014	PETER TUCATS SUPERANNUATION FUND	SUPERANNUATION CONTRIBUTIONS	250.70
EFT35032	13/03/2014	CANNING MEWS STRATA	KEY BOND REFUND	50.00
EFT35033	13/03/2014	BINDALE SUPERANNUATION FUND	SUPERANNUATION CONTRIBUTIONS	75.23
EFT35034	13/03/2014	NEVERFAIL SPRINGWATER LTD (PETER ANDERTON CEN)	BOTTLED WATER SUPPLIES / MAINTENANCE	22.75
EFT35035	13/03/2014	NEVERFAIL SPRINGWATER LTD (ZZCC)	BOTTLED WATER SUPPLIES / MAINTENANCE	13.95
EFT35036	13/03/2014	BRIKMAKERS	LIMESTONE BLOCK SUPPLIES	429.44
EFT35037	13/03/2014	LIBERTY OIL WESTERN AUSTRALIA PTY LTD	SUPPLY OF FUEL	30094.08
EFT35038	13/03/2014	CHRIS DAINES	KEY BOND REFUND	50.00
EFT35039	13/03/2014	PH CONCRETE (WA) PTY LTD	FOOTPATH MAINTENANCE / REPAIRS FOR VARIOUS LOCATIONS	59185.04
EFT35040	13/03/2014	AVELING HOMES	FOOTPATH DEPOSIT REFUND	1000.00
EFT35041	13/03/2014	BIRMAN, REX & OTHERS CAT CLUB (INC)	HALL BOND REFUND	300.00
EFT35042	13/03/2014	BENCHMARK MAINTENANCE SERVICES	CONTRACTOR BUILDING MAINTENANCE VARIOUS BUILDINGS	308.00
EFT35043	13/03/2014	SUZANNA HOFFMAN	FOOTPATH DEPOSIT REFUND	1000.00
EFT35044	13/03/2014	FONZ'S BOBCAT & TRUCK HIRE	PLANT EQUIPMENT AND OPERATOR HIRE FOR VARIOUS LOCATIONS	5847.81
EFT35045	13/03/2014	NANCY GILLESPIE	PAYMENT TO CONSIGNMENT SUPPLIER FOR GOODS SOLD AT THE ZIG ZAG CULTURAL CENTRE - 01/02/14 - 28/02/14	14.00

<b>Chq/EFT</b>	<b>Date</b>	<b>Name</b>	<b>Description</b>	<b>Amount</b>
EFT35046	13/03/2014	BEAVER TREE SERVICES	TREE REMOVAL / PRUNING FOR VARIOUS LOCATIONS	33436.70
EFT35047	13/03/2014	VISION SUPER PTY LTD	SUPERANNUATION CONTRIBUTIONS	758.66
EFT35048	13/03/2014	WEST-SURE GROUP	CASH IN TRANSIT SERVICES - FEBRUARY 2014	1650.00
EFT35049	13/03/2014	PATRICIA MOSS	PAYMENT TO CONSIGNMENT SUPPLIER FOR GOODS SOLD AT THE ZIG ZAG CULTURAL CENTRE 01/02/14 - 28/02/14	16.80
EFT35050	13/03/2014	KALEIDOSCOPE CRAFT KITS	DRY CLEANING / WASHING SERVICES FOR HARTFIELD PARK RECREATION CENTRE	60.00
EFT35051	13/03/2014	FIRE 4 HIRE	VERGE / RESERVE MAINTENANCE AT VARIOUS LOCATIONS	220.00
EFT35052	13/03/2014	JENNIFER DE YOUNG	VOLUNTEER TRANSPORT REIMBURSEMENT REFUND	298.00
EFT35053	13/03/2014	ANGELA CANCI	PODIATRY SERVICES AT JACK HEALEY SERVICES	754.37
EFT35054	13/03/2014	LUKE MONEY	HALL AND KEY BOND REFUND	350.00
EFT35055	13/03/2014	CATHERINE HICKS	PLANNING APPLICATION FEE REFUND	147.00
EFT35056	13/03/2014	CHARTHILL LEGAL	RATES REFUND	871.41
EFT35057	13/03/2014	SARAH KEIRLE	PAYMENT TO CONSIGNMENT SUPPLIER FOR GOODS SOLD AT THE ZIG ZAG CULTURAL CENTRE 01/02/14 - 28/02/14	51.80
EFT35058	13/03/2014	MEL HOWE	RATES REFUND	318.90
EFT35059	13/03/2014	BETA SOUVENIRS	SUPPLY OF VARIOUS MERCHANDISE FOR ZIG ZAG CULTURAL CENTRE	570.03
EFT35060	13/03/2014	STRATEGEN ENVIRONMENTAL CONSULTANTS	PROFESSIONAL SERVICES - WILKINS ROAD MRS AMENDMENT & EPBC REFERRAL	1215.50
EFT35061	13/03/2014	CLAIRE O'NEILL - CLAIRE'S EMBROIDERY	PAYMENT TO CONSIGNMENT SUPPLIER FOR GOODS SOLD AT THE ZIG ZAG CULTURAL CENTRE 01/02/14 - 28/02/14	121.80

<b>Chq/EFT</b>	<b>Date</b>	<b>Name</b>	<b>Description</b>	<b>Amount</b>
EFT35062	13/03/2014	LINDA STONES	PAYMENT TO CONSIGNMENT SUPPLIER FOR GOODS SOLD AT THE ZIG ZAG CULTURAL CENTRE 01/02/14 - 28/02/14	136.50
EFT35063	13/03/2014	IAN MOSS	PAYMENT TO CONSIGNMENT SUPPLIER FOR GOODS SOLD AT THE ZIG ZAG CULTURAL CENTRE 01/02/14 - 28/02/14	101.50
EFT35064	13/03/2014	WILD EYED PRESS	SUPPLY OF VARIOUS MERCHANDISE FOR ZIG ZAG CULTURAL CENTRE	321.01
EFT35065	13/03/2014	PETER FALCONER	PAYMENT TO CONSIGNMENT SUPPLIER FOR GOODS SOLD AT THE ZIG ZAG CULTURAL CENTRE 01/02/14 - 28/02/14	87.50
EFT35066	13/03/2014	CITY OF STIRLING	MEALS ON WHEELS PROGRAM FOR JANUARY 2014	5036.70
EFT35067	13/03/2014	DYMOCKS MIDLAND GATE	LIBRARY SUPPLIES	1300.00
EFT35068	13/03/2014	MARY FORWARD	PAYMENT TO CONSIGNMENT SUPPLIER FOR GOODS SOLD AT THE ZIG ZAG CULTURAL CENTRE 01/02/14 - 28/02/14	4.55
EFT35069	13/03/2014	FOXTEL	MONTHLY SUBSCRIPTION	205.00
EFT35070	13/03/2014	HANDS-ON INFECTION CONTROL	HEPATITIS VACCINATIONS FOR VARIOUS STAFF	294.80
EFT35071	13/03/2014	HANS SCHWALB	PAYMENT TO CONSIGNMENT SUPPLIER FOR GOODS SOLD AT THE ZIG ZAG CULTURAL CENTRE 01/02/14 - 28/02/14	31.47
EFT35072	13/03/2014	KIERAN INGRAM	PAYMENT TO CONSIGNMENT SUPPLIER FOR GOODS SOLD AT THE ZIG ZAG CULTURAL CENTRE 01/02/14 - 28/02/14	8.75
EFT35073	13/03/2014	KALAJOS SCHOOL OF GYMNASTICS	KIDSPORT FUNDING FOR VARIOUS PLAYERS	400.00
EFT35074	13/03/2014	THE ARTFUL FLOWE - FELICIA LOWE	PAYMENT TO CONSIGNMENT SUPPLIER FOR GOODS SOLD AT THE ZIG ZAG CULTURAL CENTRE 01/02/14 - 28/02/14	59.50



<b>Chq/EFT</b>	<b>Date</b>	<b>Name</b>	<b>Description</b>	<b>Amount</b>
EFT35075	13/03/2014	ELECTRICAL TEST TAG & INSPECTION SERVICES (ETTIS)	ANNUAL TAGGING AND TESTING OF ELECTRICAL APPLIANCES	2232.45
EFT35076	13/03/2014	DAVID GREEN	PAYMENT TO CONSIGNMENT SUPPLIER FOR GOODS SOLD AT THE ZIG ZAG CULTURAL CENTRE 01/02/14 - 28/02/14	41.78
EFT35077	13/03/2014	MPJ (WA) PTY LTD	SUPERANNUATION CONTRIBUTIONS	504.78
EFT35078	13/03/2014	TAMARA HOCKING	GROUP FITNESS CLASSES INSTRUCTOR	954.03
EFT35079	13/03/2014	LOUISA ILES	WEEKLY CLASSES - GROUP FITNESS INSTRUCTOR - HEALTHLY LIFE CHALLENGE	227.15
EFT35080	13/03/2014	SILK ON SILK (ROSEMARY LONSDALE)	PAYMENT TO CONSIGNMENT SUPPLIER FOR GOODS SOLD AT THE ZIG ZAG CULTURAL CENTRE 01/02/14 - 28/02/14	28.00
EFT35081	13/03/2014	CUROST MILK SUPPLY	MILK SUPPLY FOR ADMINISTRATION BUILDING & DEPOT	234.60
EFT35082	13/03/2014	KJERSTIN BJELLAND	MONTHLY RENTAL OF LOTS 918 & 919 MONARCH WAY WATTLE GROVE	3218.00
EFT35083	13/03/2014	MAVIS PASKULICH	PAYMENT TO CONSIGNMENT SUPPLIER FOR GOODS SOLD AT THE ZIG ZAG CULTURAL CENTRE 01/02/14 - 28/02/14	203.00
EFT35084	13/03/2014	HARI DAS & SUPRIYA NAIR	CROSSOVER CONTRIBUTION	385.00
EFT35085	13/03/2014	BEESWAX CREATIONS	PAYMENT TO CONSIGNMENT SUPPLIER FOR GOODS SOLD AT THE ZIG ZAG CULTURAL CENTRE 01/02/14 - 28/02/14	41.58
EFT35086	13/03/2014	FLOORGUARD	AUTO MACHINE SCRUB OF THE SPORTS COURTS AT HARTFIELD PARK RECREATION CENTRE	898.70
EFT35087	13/03/2014	TIERRA ECOLOGIA	PAYMENT TO CONSIGNMENT SUPPLIER FOR GOODS SOLD AT THE ZIG ZAG CULTURAL CENTRE 01/02/14 - 28/02/14	110.60

<b>Chq/EFT</b>	<b>Date</b>	<b>Name</b>	<b>Description</b>	<b>Amount</b>
EFT35088	13/03/2014	NICOLE THEOBALD	REFUND OF MARKET STALL APPLICATION FEE PAID TWICE	68.00
EFT35089	13/03/2014	RACHEL GILLAM	SALE OF ARTWORK - CONNECTING COMMUNITIES	1050.00
EFT35090	13/03/2014	MPK TREE SERVICES	TREE REMOVAL / BRANCH PRUNING AT VARIOUS LOCATIONS	15753.65
EFT35091	13/03/2014	TURFWORKS WA PTY LTD	RESERVE MOWING AT VARIOUS LOCATIONS	4628.00
EFT35092	13/03/2014	A1 TROJAN PEST CONTROL	PEST CONTROL SERVICES FOR VARIOUS LOCATIONS	189.00
EFT35093	13/03/2014	STEPHEN & KELLY GURR	BUILDING APPLICATION FEE REFUND	90.00
EFT35094	13/03/2014	THE STABLE MANAGEMENT GROUP	ENTERTAINMENT - CORYMBIA FESTIVAL 2014	2750.00
EFT35095	13/03/2014	IRRIGATION WA PTY LTD	IRRIGATION MAINTENANCE FOR TYLER SPRINGS ESTATE	258.50
EFT35096	13/03/2014	NEVERFAIL SPRINGWATER LTD (ADMIN OFFICE)	BOTTLED WATER SUPPLIES / MAINTENANCE	26.65
EFT35097	13/03/2014	ADT SECURITY	PROPOSAL VARIATION TO CCTV WORKS AT ZIG ZAG CULTURAL CENTRE	16207.86
EFT35098	13/03/2014	RIDING FOR THE DISABLED ASSOC - CARINE GROUP	KIDSPORT FUNDING FOR VARIOUS PLAYERS	200.00
EFT35099	13/03/2014	OFF PEN PUBLISHING - BETH BAKER	PAYMENT TO CONSIGNMENT SUPPLIER FOR GOODS SOLD AT THE ZIG ZAG CULTURAL CENTRE 01/02/14 - 28/02/14	4.90
EFT35100	13/03/2014	STAN THE TYRE MAN ( STAN'S TYRE SERVICE WA )	PLANT / VEHICLE PARTS	258.50
EFT35101	13/03/2014	CHRIS KERSHAW PHOTOGRAPHY	COUNCILLOR AND EXECUTIVE TEAM PHOTOS	597.50
EFT35102	13/03/2014	WOBBLYJULES INVESTMENTS FUND	SUPERANNUATION CONTRIBUTIONS	203.69
EFT35103	13/03/2014	JESSICA BAKER	PART DOG REGISTRATION FEE REFUND	57.00
EFT35104	13/03/2014	CLUBSHOP	GOODS FOR RESALE AT HARTFIELD PARK RECREATION CENTRE	36.60

<b>Chq/EFT</b>	<b>Date</b>	<b>Name</b>	<b>Description</b>	<b>Amount</b>
EFT35105	13/03/2014	GRAHAM STIMSON	PAYMENT TO CONSIGNMENT SUPPLIER FOR GOODS SOLD AT THE ZIG ZAG CULTURAL CENTRE 01/02/14 - 28/02/14	87.50
EFT35106	13/03/2014	BALLIGART - HELEN LOCK	PAYMENT TO CONSIGNMENT SUPPLIER FOR GOODS SOLD AT THE ZIG ZAG CULTURAL CENTRE 01/02/14 - 28/02/14	8.40
EFT35107	13/03/2014	FLEETCARE PTY LTD	STAFF CONTRIBUTIONS TO NOVATED LEASING	4139.62
EFT35108	13/03/2014	AUSTRALIAN CATHOLIC SUPERANNUATION & RETIREMENT FUND (ACSRF)	SUPERANNUATION CONTRIBUTIONS	234.60
EFT35109	13/03/2014	ONE DEGREE ADVISORY PTY LTD	PREPARATION AND FACILITATION OF COMMUNITY MEETING	2758.25
EFT35110	13/03/2014	BIJOUX ART ARTISANAT GALERIE	PAYMENT TO CONSIGNMENT SUPPLIER FOR GOODS SOLD AT THE ZIG ZAG CULTURAL CENTRE 01/02/14 - 28/02/14	17.50
EFT35111	13/03/2014	WET2DRY PLUMBING	GENERAL PLUMBING SERVICES TO VARIOUS LOCATIONS	825.00
EFT35112	13/03/2014	MARKET GALLERY	PICTURE FRAMING	85.00
EFT35113	13/03/2014	SWAN TRANSIT MIDVALE	REIMBURSEMENT FOR WINDOW DAMAGE TO BUS DUE TO VERGE MOWING	410.00
EFT35114	13/03/2014	KALAMUNDA PATISSERIE	CATERING SUPPLIES	46.50
EFT35115	13/03/2014	ROSE MARIE WEIGHELL	SALE OF ARTWORK - CONNECTING COMMUNITIES EXHIBITION	38.50
EFT35116	13/03/2014	LINDAS BOOKS / ROLEYSTONE COURIER	PAYMENT TO CONSIGNMENT SUPPLIER FOR GOODS SOLD AT THE ZIG ZAG CULTURAL CENTRE 01/02/14 - 28/02/14	72.80
EFT35117	13/03/2014	BRENDAS CLAY CRAFT	PAYMENT TO CONSIGNMENT SUPPLIER FOR GOODS SOLD AT THE ZIG ZAG CULTURAL CENTRE 01/02/14 - 28/02/14	8.40
EFT35118	13/03/2014	VIKING RENTALS	HIRE OF EQUIPMENT - CORYMBIA FESTIVAL 2014	1606.00

<b>Chq/EFT</b>	<b>Date</b>	<b>Name</b>	<b>Description</b>	<b>Amount</b>
EFT35119	13/03/2014	COMMARA	AGED CARE CONSULTING SERVICES	2002.00
EFT35120	13/03/2014	AMARUIT SINGH	FOOTPATH DEPOSIT REFUND	1000.00
EFT35121	13/03/2014	THE SULLIVAN SUPER FUND	SUPERANNUATION CONTRIBUTIONS	651.29
EFT35122	13/03/2014	WAITAWHILE ART	PAYMENT TO CONSIGNMENT SUPPLIER FOR GOODS SOLD AT THE ZIG ZAG CULTURAL CENTRE 01/02/14 - 28/02/14	17.64
EFT35123	13/03/2014	MIKE GREEN T/A PANORAMA ARTS ARMADALE	PAYMENT TO CONSIGNMENT SUPPLIER FOR GOODS SOLD AT THE ZIG ZAG CULTURAL CENTRE 01/02/14 - 28/02/14	29.40
EFT35124	13/03/2014	JANET AUDREY TAYLOR	SALE OF ARTWORK - CONNECTING COMMUNITIES EXHIBITION	66.50
EFT35125	13/03/2014	CERCON BUILDING - (QUALITY GROUP SERVICES PTY LTD)	FOOTPATH DEPOSIT REFUND	1200.00
EFT35126	13/03/2014	EINSTEINS TOP SECRET SCIENCE T/A TLC SAFETY PTY LTD	CHILDRENS ACTIVITIES & WATER WARS - CORYMBIA FESTIVAL 2014	3190.00
EFT35127	13/03/2014	BELLA CASA DEVELOPMENTS	PLANNING APPLICATION FEE REFUND	2933.60
EFT35128	13/03/2014	DYNAMIC FLAME BADMINTON CLUB INCORPORATED	KIDSPORT FUNDING FOR VARIOUS PLAYERS	200.00
EFT35129	13/03/2014	ALLSORTS PARTY HIRE	BOUNCY CASTLES, TRACKLESS TRAIN & ANIMAL FARM - CORYMBIA FESTIVAL 2014	1450.00
EFT35130	13/03/2014	ROBYN DANIELS	SALE OF ARTWORK - CONNECTIN COMMUNITIES EXHIBITION	224.00
EFT35131	13/03/2014	JULIE HUTCHINSON	REFUND FOR HACC CLIENT AS PAID FINAL ACCOUNT TWICE	40.00
EFT35132		EFT PAYMENTS CANCELLED DUE TO SYSTEM MALFUNCTION		
-				
EFT35353				
EFT35354	27/03/2014	CHRIS BROOK BUILDER	KALAMUNDA HISTORY VILLAGE - CONSTRUCTION OF UNIVERSAL ACCESS PUBLIC TOILET	20162.12

<b>Chq/EFT</b>	<b>Date</b>	<b>Name</b>	<b>Description</b>	<b>Amount</b>
EFT35355	27/03/2014	STYLECORP CORPORATE WEAR	SUPPLY OF UNIFORM FOR VARIOUS STAFF MEMBERS	585.04
EFT35356	27/03/2014	MOTORCHARGE - WRIGHT EXPRESS FUEL CARDS AUSTRALIA LTD	FUEL - ENDING 15 MARCH 2014	7513.27
EFT35357	27/03/2014	NESTLE AUSTRALIA LTD (MUSASHI)	KIOSK SUPPLIES FOR HARTFIELD PARK	407.55
EFT35358	27/03/2014	NATIONAL DISABILITY SERVICES	REGISTRATION FOR 2 STAFF TO ATTEND ACROD PARKING WHAT YOU NEED TO KNOW COURSE	160.00
EFT35359	27/03/2014	IMAGE EMBROIDERY	SUPPLY OF UNIFORM FOR VARIOUS STAFF MEMBERS	331.65
EFT35360	27/03/2014	FIRE AND SAFETY WA	FIRE PROTECTION WEAR / SUPPLIES	235.29
EFT35361	27/03/2014	PFD FOOD SERVICES	KIOSK SUPPLIES FOR HARTFIELD PARK RECREATION CENTRE	267.95
EFT35362	27/03/2014	KONICA MINOLTA BUSINESS SOLUTIONS P/L	PHOTOCOPYING CHARGES / MAINTENANCE FEES	570.92
EFT35363	27/03/2014	SENSATIONAL STILTWALKING, STORIES AND SILLINESS - CLARE STAGE	STILTWALKING ENTERTAINMENT AT CORYMBIA FESTIVAL	1480.00
EFT35364	27/03/2014	WILEY AIR TRANSPORT SERVICES & HIGHLAND EXPRESS	COURIER SERVICES TO COUNCILLORS	189.20
EFT35365	27/03/2014	COUNTRYWIDE PUBLICATIONS	1/2 PAGE MONTHLY ADVERT FOR ZZCC FOR YOUR GUIDE TO PERTH AND FREMANTLE	1000.00
EFT35366	27/03/2014	COMMUNITYWEST (INC)	REGISTRATION FOR 4 STAFF TO ATTEND THE DOLLARS AND SENSE OF CONSUMER DIRECTED CARE	1501.50
EFT35367	27/03/2014	NEVERFAIL SPRINGWATERLTD (FORRESTFIELD LIB)	BOTTLED WATER SUPPLIES / MAINTENANCE	31.60
EFT35368	27/03/2014	GREENLINE AG PTY LTD	PLANT / VEHICLE PARTS	745.65
EFT35369	27/03/2014	AVELING	WHITE CARD TRAINING AND ONLINE TEST FOR 3 STAFF MEMBERS	195.00
EFT35370	27/03/2014	PICTON PRESS	PRINTING OF BROCHURES FOR VARIOUS EVENTS	95.30

<b>Chq/EFT</b>	<b>Date</b>	<b>Name</b>	<b>Description</b>	<b>Amount</b>
EFT35371	27/03/2014	THE PLANNING GROUP WA PTY LTD	CONSULTANCY FEES - FORRESTFIELD INDUSTRIAL AREA STAGE 3	5643.00
EFT35372	27/03/2014	VE GRAPHICS PTY LTD	SUPPLY OF DIGITALLY PRINTED PVC BANNER FOR BIKE WEEK	225.50
EFT35373	27/03/2014	DOT ULIJN (DOT BLASZCZAK)	SALE OF ARTWORK - KALAMUNDA LIONS CLUB ART AWARD 2014 EXHIBITION	147.00
EFT35374	27/03/2014	GRAB THE MIC	ENTERTAINMENT - CORYMBIA FESTIVAL 2014	750.00
EFT35375	27/03/2014	PARAMOUNT SECURITY SERVICES	SECURITY - CORYMBIA FESTIVAL 2014	3951.20
EFT35376	27/03/2014	VIP CARPET AND UPHOLSTERY CLEANING SERVICE	CARPET CLEANING AT VARIOUS LOCATIONS	2543.00
EFT35377	27/03/2014	BIDVEST FOODSERVICE	GROCERIES FOR PETER ANDERTON CENTRE	1383.10
EFT35378	27/03/2014	ALLION LEGAL	GENERAL EMPLOYMENT SERVICES	7839.43
EFT35379	27/03/2014	MARINDUST SALES	SUPPLY OF EXTERNAL UNTAPERED FLAGPOLE FOR DEPOT	610.50
EFT35380	27/03/2014	KERRIE ROSS	PART DOG REGISTRATION FEE REFUND	38.00
EFT35381	27/03/2014	PHILIP AND DEBBIE EDEN	81 SUSSEX RD FORRESTFIELD - WAPC 19-11 - RETURN OF CROSSOVER BOND	8295.00
EFT35382	27/03/2014	FRANK GYOERGY	PLANNING APPLICATION FEE REFUND	190.40
EFT35383	27/03/2014	MAZENOD COLLEGE	PLANNING APPLICATION FEE REFUND	147.00
EFT35384	27/03/2014	ROBYN BEARDSSELL	SALE OF ARTWORK - KALAMUNDA LIONS CLUB ART AWARD 2014 EXHIBITION	119.00
EFT35385	27/03/2014	WENDY LEE MORT	SALE OF ARTWORK - KALAMUNDA LIONS CLUB ART AWARD 2014 EXHIBITION	210.00
EFT35386	27/03/2014	ALLAN MORTON	COUNCILLOR ALLOWANCE - 28/03/14 - 24/04/14	1965.39
EFT35387	27/03/2014	CHESARE ANDREW MORGANI	FOOTPATH DEPOSIT REFUND	1000.00
EFT35388	27/03/2014	JULIE EVERSEN JJ'S SWEET BLISS	KEY BOND REFUND	50.00
EFT35389	27/03/2014	JACOB & CATHERINE SCHOEN	SALE OF ARTWORK - KALAMUNDA LIONS CLUB ART AWARD 2014 EXHIBITION	196.00
EFT35390	27/03/2014	PHILLIP & PATRICIA SAUZIER	FOOTPATH DEPOSIT REFUND	950.00

<b>Chq/EFT</b>	<b>Date</b>	<b>Name</b>	<b>Description</b>	<b>Amount</b>
EFT35391	27/03/2014	SPECTRUM ARTS	SALE OF ARTWORK - HANDS, HEAD & HEART EXHIBITION	1792.00
EFT35392	27/03/2014	GABRIELLE HUTCHINSON	HALL AND KEY BOND REFUND	350.00
EFT35393	27/03/2014	STEVEN W & ELAINE FRASER	RATES REFUND	75.94
EFT35394	27/03/2014	KIEREN & LYNDA CHARLES	FOOTPATH DEPOSIT REFUND	1000.00
EFT35395	27/03/2014	RANDALL PYPER	FOOTPATH DEPOSIT REFUND	1000.00
EFT35396	27/03/2014	LESLIE MILLARD & TRINA BARNES	BIRTHDAY PARTY BOND REFUND FOR THE USE OF HARTFIELD PARK RECREATION CENTRE	50.00
EFT35397	27/03/2014	MARGARET & MICHAEL WILLISON	RATES REFUND	418.13
EFT35398	27/03/2014	ANDREW FARRANT	LOT 20 (98) GOOSEBERRY HILL RD - WAPC97590 - RETURN OF OUTSTANDING WORKS BOND	5950.00
EFT35399	27/03/2014	KAROL EDMUND PALUSZAK	SALE OF ARTWORK - KALAMUNDA LIONS CLUB ART AWARD 2014 EXHIBITION	420.00
EFT35400	27/03/2014	WA LOCAL GOVERNMENT SUPERANNUATION PLAN	SUPERANNUATION CONTRIBUTIONS	86044.06
EFT35401	27/03/2014	SHIRE OF KALAMUNDA STAFF SOCIAL CLUB	PAYROLL DEDUCTIONS	858.00
EFT35402	27/03/2014	CHILD SUPPORT AGENCY	PAYROLL DEDUCTIONS	847.88
EFT35403	27/03/2014	AUSTRALIA POST	POSTAL EXPENSES TRANSACTION FEES	7097.29
EFT35404	27/03/2014	BUNNINGS BUILDING SUPPLIES	HARDWARE SUPPLIES FOR VARIOUS LOCATIONS	555.35
EFT35405	27/03/2014	COVS PARTS PTY LTD	PLANT / VEHICLE PARTS	2668.33
EFT35406	27/03/2014	LANDGATE	LAND ENQUIRIES FOR VARIOUS LOCATIONS	317.60
EFT35407	27/03/2014	WA LOCAL GOVERNMENT ASSOC	SUPPLY OF 2014 LOCAL GOVERNMENT DIRECTORIES & REPLACEMENT BANNERS IN THE TERRACE TRAVEL CASE	832.80
EFT35408	27/03/2014	MCLEODS BARRISTERS & SOLICITORS	LEGAL EXPENSES	1447.19
EFT35409	27/03/2014	BORAL BRICKS WA PTY LTD	SUPPLY OF PAVING BRICKS	2621.57
EFT35410	27/03/2014	SESCO SECURITY CO	SECURITY MONITORING SERVICES FOR VARIOUS LOCATIONS AND ADDITIONS TO ELECTRONIC ACCESS SYSTEM AT OPERATIONS CENTRE	11015.40

<b>Chq/EFT</b>	<b>Date</b>	<b>Name</b>	<b>Description</b>	<b>Amount</b>
EFT35411	27/03/2014	STATE LIBRARY OF W.A.	LOST AND DAMAGED BOOKS AT VARIOUS LIBRARIES	410.30
EFT35412	27/03/2014	LANDGATE - VALUATIONS	VALUATIONS FOR VARIOUS LOCATIONS	863.56
EFT35413	27/03/2014	WALKERS HARDWARE (MITRE 10)	HARDWARE SUPPLIES	433.94
EFT35414	27/03/2014	ECHO NEWSPAPER	ADVERTISING FOR VARIOUS JOBS / EVENTS	4000.00
EFT35415	27/03/2014	EASTERN METROPOLITAN REGIONAL COUNCIL	DOMESTIC / WASTE CHARGES - RED HILL TIP & MATTRESS DISPOSAL FEES	271436.69
EFT35416	27/03/2014	BORAL CONSTRUCTION MATERIALS GROUP	ROAD MATERIALS FOR VARIOUS LOCATIONS	9145.08
EFT35417	27/03/2014	A & S HILL	ELECTRICIAL REPAIRS / MAINTENANCE FOR VARIOUS LOCATIONS	1351.68
EFT35418	27/03/2014	3 VODAFONE HUTCHISON AUSTRALIA PTY LTD	COMMUNICATION EXPENSES	2604.30
EFT35419	27/03/2014	FASTA COURIERS	COURIER FEES	347.91
EFT35420	27/03/2014	THE WATERSHED WATER SYSTEMS	RETICULATION PARTS FOR VARIOUS RESERVES	1567.35
EFT35421	27/03/2014	RAECO	STATIONERY / OFFICE SUPPLIES	41.90
EFT35422	27/03/2014	MCINTOSH & SON	PLANT / VEHICLE PARTS	51.17
EFT35423	27/03/2014	KINETIC HEALTH GROUP LTD	PREPLACEMENT MEDICALS / BASELINE HEARING TESTS	629.20
EFT35424	27/03/2014	SANDGROPER SEPTICS	SEPTIC / GREASE TANK CLEAN OUT SERVICES AT VARIOUS LOCATIONS	499.25
EFT35425	27/03/2014	ALSCO LINEN SERVICE	LINEN HIRE / LAUNDRY SERVICES	1043.48
EFT35426	27/03/2014	BRADOCK PODIATRY SERVICES PTY LTD	PODIATRY SERVICES AT JACK HEALEY CENTRE	1545.83
EFT35427	27/03/2014	DAYNITE TOWING SERVICE (WA) PTY LTD (FORMERLEY MOBITOW PTY LTD)	TOWING SERVICES	92.40
EFT35428	27/03/2014	LINDLEY CONTRACTING	PLUMBING REPAIRS / MAINTENANCE FOR VARIOUS LOCATIONS	4910.50
EFT35429	27/03/2014	KALA BOB KATS PTY LTD	PLANT EQUIPMENT AND OPERATOR HIRE FOR VARIOUS LOCATIONS	11452.65
EFT35430	27/03/2014	DEPARTMENT OF PREMIER & CABINET - STATE LAW PUBLISHER	GOVERNMENT GAZETTE ADVERTISING	68.00



<b>Chq/EFT</b>	<b>Date</b>	<b>Name</b>	<b>Description</b>	<b>Amount</b>
EFT35431	27/03/2014	ACTIMED AUSTRALIA PTY LTD	MEDICAL SUPPLIES FOR PODIARTIST	464.64
EFT35432	27/03/2014	GRONBEK SECURITY	SECURITY KEY SERVICES TO VARIOUS SHIRE BUILDINGS	28.00
EFT35433	27/03/2014	GRIMES CONTRACTING PTY LTD	CONTRACTOR BUILDING MAINTENANCE FOR VARIOUS BUILDINGS	3968.79
EFT35434	27/03/2014	KENYON & COMPANY PTY LTD	PLANT / VEHICLE PARTS	354.20
EFT35435	27/03/2014	BGC ASPHALT	ROAD MATERIALS FOR VARIOUS LOCATIONS	2832.04
EFT35436	27/03/2014	WESTBOOKS	LIBRARY SUPPLIES	254.12
EFT35437	27/03/2014	CADSULT IRRIGATION CONSULTANTS	DESIGN & DOCUMENTATION FOR DAVIS PARK IRRIGATION & ELECTRICAL CUBICLE UPGRADE	5335.00
EFT35438	27/03/2014	WA LIMESTONE COMPANY	ROAD MATERIALS FOR VARIOUS LOCATIONS	1276.79
EFT35439	27/03/2014	WESTSIDE FIRE SERVICES	TESTING AND INSPECTION OF FIRE EQUIPMENT / SUPPLIES	1513.60
EFT35440	27/03/2014	STAPLES AUSTRALIA PTY LTD(CORPORATE EXPRESS AUSTRALIA LTD)	STATIONERY / OFFICE SUPPLIES	11232.22
EFT35441	27/03/2014	KALAMUNDA STATE EMERGENCY SERVICE	REIMBURSEMENT - GOODS AND SERVICES	1459.65
EFT35442	27/03/2014	FULTON HOGAN INDUSTRIES PTY LTD	ROAD MATERIALS FOR VARIOUS LOCATIONS	100.14
EFT35443	27/03/2014	JOHN GIARDINA	COUNCILLOR ALLOWANCE - 28/03/14 - 24/04/14	3119.24
EFT35444	27/03/2014	GEOFF STALLARD	COUNCILLOR ALLOWANCE - 28/03/14 - 24/04/14	1965.39
EFT35445	27/03/2014	FOODWORKS FRESH FORRESTFIELD	GROCERY SUPPLIES	1630.03
EFT35446	27/03/2014	WA LOCAL GOVERNMENT ASSOCIATION (ADVERTISING)	ADVERTISING FOR VARIOUS JOBS / EVENTS	10845.02
EFT35447	27/03/2014	MACDONALD JOHNSTON ENGINEERING	PLANT / VEHICLE PARTS	721.66
EFT35448	27/03/2014	TL ENGINEERING (AUST) PTY LTD	PLANT / VEHICLE PARTS	364.00
EFT35449	27/03/2014	LO-GO APPOINTMENTS	HIRE OF TEMPORARY STAFF FOR DEPOT / ADMIN	5855.71
EFT35450	27/03/2014	STAFF LINK PERSONNEL	HIRE OF TEMPORARY STAFF FOR DEPOT / ADMIN	8545.00
EFT35451	27/03/2014	BRIDGESTONE AUSTRALIA LTD	PLANT / VEHICLE PARTS	901.61
EFT35452	27/03/2014	GREEN SKILLS (ECOJOBS)	LABOUR ASSISTANCE FOR TREE PLANTING	539.00

<b>Chq/EFT</b>	<b>Date</b>	<b>Name</b>	<b>Description</b>	<b>Amount</b>
EFT35453	27/03/2014	CITY OF ARMADALE	LONG SERVICE LEAVE RECOUP - ADAM HOLTHOUSE	2498.81
EFT35454	27/03/2014	ZIG ZAG GRAPHICS AND PRINT	DIGITAL PRINTING OF 200 GREEN ARMY BROCHURES	394.00
EFT35455	27/03/2014	ONESTEEL DISTRIBUTION (MIDALIA STEEL)	PLANT / VEHICLE PARTS	849.20
EFT35456	27/03/2014	J BLACKWOOD & SON LIMITED	PROTECTIVE WEAR / SUPPLIES	3608.01
EFT35457	27/03/2014	SLATER GARTRELL SPORTS	REPAIR SYNTHETIC TURF CENTRE WICKET AT SCOTT RESERVE	253.00
EFT35458	27/03/2014	AUSTRALIAN INSTITUTE OF MANAGEMENT	REGISTRATION FOR 1 STAFF TO ATTEND BUDGETING AND BUSINESS MANAGEMENT PLANNING COURSE	1180.00
EFT35459	27/03/2014	EASTERN HILLS SAWS AND MOWERS	PLANT / VEHICLE PARTS	681.00
EFT35460	27/03/2014	LOVEGROVE TURF SERVICES	TURF MAINTENANCE / SERVICES AT VARIOUS LOCATIONS	10274.00
EFT35461	27/03/2014	REPCO BRAKE & CLUTCH	PLANT / VEHICLE PARTS	429.00
EFT35462	27/03/2014	HIGH WYCOMBE FAMILY CENTRE INC	CONTRIBUTION - REIMBURSEMENT FOR 2012/13 UTILITY EXPENSES	4921.76
EFT35463	27/03/2014	CRABBS KALAMUNDA (IGA)	GROCERY SUPPLIES	381.54
EFT35464	27/03/2014	1ST MAIDA VALE SCOUT GROUP	KIDSPORT FUNDING FOR VARIOUS PLAYERS	200.00
EFT35465	27/03/2014	STAGE FX	TECHNICIAN SERVICESFOR VARIOUS EVENTS	3435.00
EFT35466	27/03/2014	FORRESTFIELD FOOTBALL CLUB	KIDSPORT FUNDING FOR VARIOUS PLAYERS	2920.00
EFT35467	27/03/2014	HILLS BMX CLUB (INC)	KIDSPORT FUNDING FOR VARIOUS PLAYERS	144.00
EFT35468	27/03/2014	LITTLE LOADS	GARDEN / VERGE SUPPLIES FOR VARIOUS LOCATIONS	1188.00
EFT35469	27/03/2014	GEM CAMERA CLUB INC	KEY BOND REFUND	50.00
EFT35470	27/03/2014	HIGH WYCOMBE CRICKET CLUB	ANNUAL FINANCIAL CONTRIBUTION TO CLUB TO MAINTAIN TURF WICKET AT SCOTT RESERVE FOR 2013/14 SEASON	12500.00
EFT35471	27/03/2014	PLUNKETT HOMES (1903) PTY LTD	FOOTPATH DEPOSIT REFUNDS	3000.00

<b>Chq/EFT</b>	<b>Date</b>	<b>Name</b>	<b>Description</b>	<b>Amount</b>
EFT35472	27/03/2014	GCS SERVICES	PLUMBING SERVICES TO VARIOUS SHIRE BUILDINGS	567.05
EFT35473	27/03/2014	MARTIN'S TRAILER PARTS	PLANT / VEHICLE PARTS	272.26
EFT35474	27/03/2014	LANDMARK OPERATIONS LTD	CHEMICALS & SUPPLIES	104.50
EFT35475	27/03/2014	THE HONDA SHOP	SUPPLY OF 2 GENERATORS FOR FIRE CREW	4698.00
EFT35476	27/03/2014	SPORTS TURF TECHNOLOGY	SOIL AND LEAF ANALYSIS AT VARIOUS RESERVES	2000.00
EFT35477	27/03/2014	CHADSON ENGINEERING PTY LTD	POOL MAINTENANCE SUPPLIES	69.30
EFT35478	27/03/2014	UNIVERSAL ENGINEERS SUPPLIES (UES)	PLANT / VEHICLE PARTS	67.10
EFT35479	27/03/2014	COMMISSIONER OF POLICE	VOLUNTEER POLICE CHECKS	120.80
EFT35480	27/03/2014	SWAN MARQUEES AND PARTY HIRE	MISCELLANEOUS HIRE EQUIPMENT FOR VARIOUS EVENTS	1624.16
EFT35481	27/03/2014	HAWLEY'S BOBCAT SERVICE	PLANT EQUIPMENT AND OPERATOR HIRE FOR VARIOUS LOCATIONS	9912.10
EFT35482	27/03/2014	DEPARTMENT OF SPORT & RECREATION	SPORTS DIMENSIONS GUIDE FOR PLAYING AREA'S, SPORTS AND RECREATIONS FACILITIES	22.00
EFT35483	27/03/2014	FORRESTFIELD NEWSPAPERS & MAGAZINES DELIVERY	NEWSPAPERS / MAGAZINES DELIVERIES FOR VARIOUS LOCATIONS	74.15
EFT35484	27/03/2014	TOTAL PACKAGING (WA) PTY LTD	SUPPLY OF DOG LITTER BAGS	1716.00
EFT35485	27/03/2014	AABEL LINE MARKING	LINE MARKING FOR VARIOUS LOCATIONS	1963.94
EFT35486	27/03/2014	CHILDRENS BOOK COUNCIL OF AUSTRALIA - WA BRANCH	MEMBERSHIP RENEWAL TO CBC WA BRANCH 2013/14	60.00
EFT35487	27/03/2014	DIGITAL MAPPING SOLUTIONS	REGISTRATION FOR 2 STAFF TO ATTEND TRAINING - QGIS KICKSTART	1320.00
EFT35488	27/03/2014	DEPARTMENT OF FIRE AND EMERGENCY SERVICES (DFES)	50% COST SHARING FOR THE COMMUNITY FIRE MANAGER - 27/9/13 - 26/12/13	18877.94
EFT35489	27/03/2014	GHD PTY LTD	PREPARE DESIGN AND APPROVALS FOR ROUNDABOUT AND NEW ROAD CONSTRUCTION - HALE ROAD/ARTHUR ROAD ROUNDABOUT AND WIMBRIDGE ROAD EXTENSION	15669.50

<b>Chq/EFT</b>	<b>Date</b>	<b>Name</b>	<b>Description</b>	<b>Amount</b>
EFT35490	27/03/2014	ICON-SEPTECH	DRAINAGE SUPPLIES FOR VARIOUS LOCATIONS	4451.70
EFT35491	27/03/2014	VICKI CRUM	TIP PASS REFUND	60.00
EFT35492	27/03/2014	IAN JUSTIN WHITTEN	COUNCILLOR ALLOWANCE - 28/03/14 - 24/04/14	1965.39
EFT35493	27/03/2014	ASHTON ADMOR PTY LTD	PROVIDE OPERATIONS CARAVAN - CORYMBIA FESTIAL 2014	660.00
EFT35494	27/03/2014	COMMUNICATION SUPPORT UNIT SES	ASSIST WITH PARKING & TRAFFIC CONTROL FOR CORYMBIA FESTIVAL 2014	600.00
EFT35495	27/03/2014	B & J CATALANO PTY LTD	ROAD MATERIALS FOR VARIOUS LOCATIONS	8333.25
EFT35496	27/03/2014	HILL TOP GROUP PTY	CONTRACTOR BUILDING MAINTENANCE FOR VARIOUS BUILDINGS	1878.21
EFT35497	27/03/2014	KEVREK ( AUSTRALIA ) PTY LTD	PLANT / VEHICLE PARTS	341.00
EFT35498	27/03/2014	ALL FLAGS SIGN	SUPPLY OF 1 AUSTRALIAN FLAG	207.50
EFT35499	27/03/2014	CY O'CONNOR COLLEGE OF TAFE	REGISTRATION FOR 2 STAFF TO ATTEND CAT & DOG MANAGEMENT COURSE	1254.00
EFT35500	27/03/2014	TRILOGY SERVICING PTY LTD	AIRCONDITIONING MAINTENANCE / REPAIRS FOR VARIOUS LOCATIONS	286.00
EFT35501	27/03/2014	QUICK CORPORATE AUST PTY LTD	STATIONERY & OFFICE SUPPLIES	3283.80
EFT35502	27/03/2014	WEST AUSTRALIAN NEWSPAPERS HOLDINGS LTD	ARTS DIRECTORY ADVERTISEMENT	115.25
EFT35503	27/03/2014	SUSAN BILICH	COUNCILLOR ALLOWANCE - 28/03/14 - 24/04/14 - SHIRE	7157.69
EFT35504	27/03/2014	KALAMUNDA CHAMBER OF COMMERCE INC	SPONSORSHIP TO HARVEST FESTIVAL 2014	15000.00
EFT35505	27/03/2014	COMMUNITY NEWSPAPER GROUP LTD	ADVERTISING FOR VARIOUS JOBS AND EVENTS	5353.08
EFT35506	27/03/2014	WREN OIL	WASTE OIL RECYCLING - DISPOSAL FEES	19.97
EFT35507	27/03/2014	MIZEYAN CANDEMIR	FOOTPATH DEPOSIT REFUND	1200.00
EFT35508	27/03/2014	ACES ( ANIMAL CARE EQUIPMENT & SERVICES P/L )	SUPPLY OF ANIMAL HANDLING EQUIPMENT	353.00
EFT35509	27/03/2014	BIG W (AR W1.C3.U.07)	LIBRARY SUPPLIES	320.00
EFT35510	27/03/2014	PRIME CORPORATE PSYCHOLOGY SERVICES P/L	EMPLOYEE ASSISTANCE PROGRAMME	281.88

<b>Chq/EFT</b>	<b>Date</b>	<b>Name</b>	<b>Description</b>	<b>Amount</b>
EFT35511	27/03/2014	PETER CLARK - PIANO TUNER	MAINTENANCE / REPAIRS TO PIANOS IN VARIOUS SHIRE BUILDINGS	660.00
EFT35512	27/03/2014	METROPOLITAN CASH REGISTER COMPANY	SUPPLY OF CASH REGISTER ROLLS	35.68
EFT35513	27/03/2014	FOOD TECHNOLOGY SERVICES PTY LTD	HIRE OF TEMPORARY STAFF FOR HEALTH DEPARTMENT	451.00
EFT35514	27/03/2014	OPUS INTERNATIONAL CONSULTANTS (PCA) LIMITED	PROFESIONAL SERVICES - RELOCATION OF SEWER AT ABERNETHY ROAD	4041.51
EFT35515	27/03/2014	KINGSOAK PTY LTD	FOOTPATH DEPOSIT REFUND	700.00
EFT35516	27/03/2014	COCA-COLA AMATIL (AUST) PTY LTD	KIOSK SUPPLIES FOR HARTFIELD RECREATION CENTRE	1240.05
EFT35517	27/03/2014	CONFECT - EXPRESS	KIOSK SUPPLIES FOR HARTFIELD RECREATION CENTRE	246.54
EFT35518	27/03/2014	HOSECO	PLANT / VEHICLE PARTS	282.96
EFT35519	27/03/2014	HYDROQUIP PUMPS	MAINTENANCE OF PUMPING INSTALLATIONS	5412.00
EFT35520	27/03/2014	BOULEVARD LIVING PTY LTD (OORSCHOT)	FOOTPATH DEPOSIT REFUND	1000.00
EFT35521	27/03/2014	DIRECT TRADES SUPPLY PTY LTD	HARDWARE SUPPLIES	211.45
EFT35522	27/03/2014	CEDAR HOMES	SEPTIC TANK APPLICATION & INSPECTION FEES REFUND	226.00
EFT35523	27/03/2014	GREENWAY ENTERPRISES	GARDEN / RESERVE SUPPLIES	323.24
EFT35524	27/03/2014	MARGARET THOMAS	COUNCILLOR ALLOWANCE - 28/03/14 - 24/04/14	1965.39
EFT35525	27/03/2014	DARREN S JONES & NICOLE L RUMBOLD	PARTY BOND REFUND AT HATRFIELD PARK RECREATION CENTRE	200.00
EFT35526	27/03/2014	VERMEER (WA & NT)	PLANT / VEHICLE PARTS	670.66
EFT35527	27/03/2014	MAYDAY EARTHMOVING	PLANT AND EQUIPMENT HIRE	5128.57
EFT35528	27/03/2014	BGC CEMENT BAGGED PRODUCTS	ROAD MATERIALS SUPPLIES	1916.81
EFT35529	27/03/2014	INSIGHT CCS PTY LTD	AFTER HOURS ANSWERING SERVICES	2793.45
EFT35530	27/03/2014	PROJECT INDUSTRIES	PLANT/VEHICLE PARTS	2580.69
EFT35531	27/03/2014	NOREEN TOWNSEND	COUNCILLOR ALLOWANCE - 28/03/14 - 24/04/14	1965.39
EFT35532	27/03/2014	MODERN TEACHING AIDS	CHILDREN ACTIVITY SUPPLIES	691.05

<b>Chq/EFT</b>	<b>Date</b>	<b>Name</b>	<b>Description</b>	<b>Amount</b>
EFT35533	27/03/2014	CONSTABLE CARE CHILD SAFETY FOUNDATION INC	HIRE OF CONSTABLE CARE ACTORS TO PERFORM AT CORYMBIA	385.00
EFT35534	27/03/2014	FRANK LINDSEY	COUNCILLOR ALLOWANCE - 28/03/14 - 24/04/14	1965.39
EFT35535	27/03/2014	HILLIANS NETBALL CLUB	KIDSPORT FUNDING FOR VARIOUS PLAYERS	600.00
EFT35536	27/03/2014	HUGHES BUILDERS PTY LTD	FOOTPATH DEPOSIT REFUND	1000.00
EFT35537	27/03/2014	SIMON DI ROSSO	COUNCILLOR ALLOWANCE - 28/03/14 - 24/04/14	1965.39
EFT35538	27/03/2014	G.D.CHARLTON	PODIATRY SERVICES AT JACK HEALEY CENTRE	730.76
EFT35539	27/03/2014	WEBSITE WEED & PEST PTY LTD	WEED CONTROL AT VARIOUS LOCATIONS	34708.96
EFT35540	27/03/2014	SECURE TRAFFIC	TRAFFIC MANAGEMENT FOR VARIOUS LOCATIONS	5714.50
EFT35541	27/03/2014	CASTLEDINE & CASTLEDINE DESIGNERS	SALE OF ARTWORK - HANDS, HEAD AND HEART EXHIBITION	4200.00
EFT35542	27/03/2014	JACKSON MCDONALD LAWYERS	LEGAL EXPENSES	11642.40
EFT35543	27/03/2014	HAYLEY CONNOLLY	RETURN OF OUTSTANDING WORKS BOND CROSSOVER BATTLEAXE - WAPC 143305 - 11 PETER ROAD HIGH WYCOMBE	12206.25
EFT35544	27/03/2014	GOLDY HOLDEN & SUZUKI - KOMET PTY LTD	PLANT/VEHICLE PARTS	110.00
EFT35545	27/03/2014	HUMES	DRAINAGE SUPPLIES FOR VARIOUS LOCATIONS	6446.13
EFT35546	27/03/2014	TESSA CAMPBELL	PART DOG REGISTRATION REFUND	42.50
EFT35547	27/03/2014	JOSEPH RICKERBY	FOOTPATH DEPOSIT REFUND	1000.00
EFT35548	27/03/2014	AVALON SHEDS & STABLES	PLANNING APPLICATION FEE REFUND	147.00
EFT35549	27/03/2014	MIDLAND SURVEY SERVICES ( T/AS FRESHWATER BAY INVESTMENTS P/L)	DETAILED SURVEY - DRAINAGE & INVESTIGATION WOODLUPINE CREEK FORRESTFIELD	8492.00
EFT35550	27/03/2014	THE CHAIR DOCTOR WA PTY LTD	SUPPLY OF 1 NEW OFFICE CHAIR	423.00
EFT35551	27/03/2014	RED 11 PTY LTD	COMPUTER SUPPLIES / ACCESSORIES	3080.00
EFT35552	27/03/2014	KAREN HEYDON-CARTER	PART DOG REGISTRATION REFUND	77.50
EFT35553	27/03/2014	AGED & COMMUNITY SERVICES WA INC	REGISTRATION FOR 2 STAFF TO ATTEND VARIOUS COURSES	690.00
EFT35554	27/03/2014	AUSTRALIAN SUPERANNUATION	SUPERANNUATION CONTRIBUTIONS	1363.54

<b>Chq/EFT</b>	<b>Date</b>	<b>Name</b>	<b>Description</b>	<b>Amount</b>
EFT35555	27/03/2014	WARDEN CONSTRUCTION (WA) PTY LTD	FOOTPATH DEPOSIT REFUND	1000.00
EFT35556	27/03/2014	ROAD SIGNS AUSTRALIA (ALLPACK SIGNS )	TRAFFIC PROTECTION PRODUCTS / SIGNAGE	390.94
EFT35557	27/03/2014	REDINK HOMES PTY LTD	FOOTPATH DEPOSIT REFUND	1000.00
EFT35558	27/03/2014	PIRTEK WELSHPOOL	PLANT / VEHICLE PARTS	79.20
EFT35559	27/03/2014	ANDREW FOWLER-TUTT	REFUND OF EMPLOYMENT CONTRACT ALLOWANCE	275.40
EFT35560	27/03/2014	HARVEY NORMAN ELECTRICS MIDLAND	ELECTRICAL SUPPLIES	79.90
EFT35561	27/03/2014	HOLCIM AUSTRALIA PTY LTD	ROAD MATERIALS FOR VARIOUS LOCATIONS	1235.61
EFT35562	27/03/2014	ANDREW WADDELL	COUNCILLOR ALLOWANCE - 28/03/14 - 24/04/14	1965.39
EFT35563	27/03/2014	JEREMY & SANDRA DUNNE	CROSSOVER CONTRIBUTION	385.00
EFT35564	27/03/2014	PETER TUCATS SUPERANNUATION FUND	SUPERANNUATION CONTRIBUTIONS	250.70
EFT35565	27/03/2014	DRAINFLOW SERVICES PTY LTD	CLEANING / MAINTAINING STORM WATER DRAINS	7087.30
EFT35566	27/03/2014	BINDALE SUPERANNUATION FUND	SUPERANNUATION CONTRIBUTIONS	65.50
EFT35567	27/03/2014	DARREN JONES	REFUND OF EMPLOYMENT CONTRACT ALLOWANCE	179.85
EFT35568	27/03/2014	PRIME SUPERANNUATION	SUPERANNUATION CONTRIBUTIONS	100.26
EFT35569	27/03/2014	NEVERFAIL SPRINGWATER LTD (PETER ANDERTON CEN)	BOTTLED WATER SUPPLIES / MAINTENANCE	30.30
EFT35570	27/03/2014	MARY'S MOUNT NETBALL CLUB	KIDSPORT FUNDING FOR VARIOUS PLAYERS	185.00
EFT35571	27/03/2014	DEVCO HOLDINGS PTY LTD	BUILDING WORKS COMPLETED AT KALAMUNDA AMATEUR DRAMATIC SOCIETY (KADS THEATRE) REMEDICATION WORK	183284.31
EFT35572	27/03/2014	NEVERFAIL SPRINGWATER LTD (ZZCC)	BOTTLED WATER SUPPLIES / MAINTENANCE	66.85
EFT35573	27/03/2014	DYLAN O'CONNOR	COUNCILLOR ALLOWANCE - 28/03/14 - 24/04/14	1965.39
EFT35574	27/03/2014	CONTRAFLOW	TRAFFIC MANAGEMENT FOR VARIOUS LOCATIONS	42222.95
EFT35575	27/03/2014	DAVINA SANDHU	REFUND OF EMPLOYMENT CONTRACT ALLOWANCE	59.90

<b>Chq/EFT</b>	<b>Date</b>	<b>Name</b>	<b>Description</b>	<b>Amount</b>
EFT35576	27/03/2014	PH CONCRETE (WA) PTY LTD	FOOTPATH MAINTENANCE / REPAIRS FOR VARIOUS LOCATIONS	23168.83
EFT35577	27/03/2014	AVELING HOMES	FOOTPATH DEPOSIT REFUND	1000.00
EFT35578	27/03/2014	STATE WIDE TURF SERVICES	TURF SUPPLIES / MAINTENANCE FOR VARIOUS LOCATIONS	1199.00
EFT35579	27/03/2014	PICKERING BROOK SENIOR FOOTBALL CLUB	FINANCIAL DONATION TO CLUB TO PURCHASE FERTILISER PRODUCTS FOR PICKERING BROOK SPORTS OVAL	1000.00
EFT35580	27/03/2014	JORGE'S CONTRACTING SERVICES	CLEANING SERVICES AT PETER ANDERTON CENTRE	2412.85
EFT35581	27/03/2014	BENCHMARK MAINTENANCE SERVICES	CONTRACTOR BUILDING MAINTENANCE VARIOUS BUILDINGS	247.50
EFT35582	27/03/2014	METROSTRATA DEVELOPMENTS PTY LTD T/A MYGEN HOMES	FOOTPATH DEPOSIT REFUND	1000.00
EFT35583	27/03/2014	FONZ'S BOBCAT & TRUCK HIRE	PLANT EQUIPMENT AND OPERATOR HIRE FOR VARIOUS LOCATIONS	6272.05
EFT35584	27/03/2014	ARMADILLO GROUP PTY LTD	PLANT / VEHICLE PARTS	2135.19
EFT35585	27/03/2014	BEAVER TREE SERVICES	TREE REMOVAL / PRUNING FOR VARIOUS LOCATIONS	1705.55
EFT35586	27/03/2014	VISION SUPER PTY LTD	SUPERANNUATION CONTRIBUTIONS	758.66
EFT35587	27/03/2014	FIRST HOME BUYERS DIRECT	FOOTPATH DEPOSIT REFUND	1000.00
EFT35588	27/03/2014	OEM GROUP 2006 PTY LTD	PLANT / VEHICLE PARTS	563.57
EFT35589	27/03/2014	JOHN WARDLE	CROSSOVER CONTRIBUTION	192.50
EFT35590	27/03/2014	TERENCE CHARLES NEWMAN	FOOTPATH DEPOSIT REFUND	1000.00
EFT35591	27/03/2014	BICYCLING WESTERN AUSTRALIA	KEY BOND REFUND	50.00
EFT35592	27/03/2014	IPLX PIPELINES PTY LTD	ROAD / VERGE MAINTENANCE SUPPLIES	107.53
EFT35593	27/03/2014	LANDMARK PRODUCTS LIMITED	SUPPLY OF 4 BINS FOR BILL SHAW RESERVE WALLISTON	7595.50
EFT35594	27/03/2014	OFFICINO	SUPPLY OF OFFICE CHAIRS	5180.45



<b>Chq/EFT</b>	<b>Date</b>	<b>Name</b>	<b>Description</b>	<b>Amount</b>
EFT35595	27/03/2014	DARRELL FORREST	REFUND OF EMPLOYMENT CONTRACT ALLOWANCE	149.85
EFT35596	27/03/2014	MARY'S MOUNT PRIMARY SCHOOL PARENTS & FRIENDS	KEY BOND REFUND	50.00
EFT35597	27/03/2014	TOM HOGG	SALE OF ARTWORK - KALAMUNDA LIONS CLUB ART AWARD 2014 EXHIBITION	185.50
EFT35598	27/03/2014	JEAN-NOEL & MARIE PETIT	PLANNING APPLICATION FEE REFUND	147.00
EFT35599	27/03/2014	FUJI XEROX AUSTRALIA PTY LTD	PHOTOCOPYING CHARGES	490.05
EFT35600	27/03/2014	STARDATA PTY LTD	STARDATA MAINTENANCE AGREEMENT - MARCH 2014	1246.09
EFT35601	27/03/2014	POURIYA & JODIE ANN NADERI	FOOTPATH DEPOSIT REFUND	1000.00
EFT35602	27/03/2014	AARON J STIRK	TECHNICIAN SERVICES FOR VARIOUS EVENTS	629.00
EFT35603	27/03/2014	SUPALUX PAINT CO PTY LTD	PAINTING MAINTENANCE WORKS FOR VARIOUS LOCATIONS	35751.44
EFT35604	27/03/2014	CHOICE ENVIRONMENTAL SERVICES	SUPPLY OF GARDEN SUPPLIES	152.15
EFT35605	27/03/2014	HARE & FORBES PTY LTD	PLANT / VEHICLE PARTS	121.30
EFT35606	27/03/2014	BETA SOUVENIRS	SUPPLY OF VARIOUS MERCHANDISE FOR ZIG ZAG CULTURAL CENTRE	136.68
EFT35607	27/03/2014	STRATEGEN ENVIRONMENTAL CONSULTANTS	CONSULTANCY FEES - MOIRA AVE WATER MONITORING, AGENCY CONSULTATION FORRESTFIELD, HIGH WYCOMBE INDUSTRIAL AREA AND WILKINS ROAD MRS AMENDMENT.	3678.43
EFT35608	27/03/2014	RHONDA HARDY	REFUND OF EMPLOYMENT CONTRACT ALLOWANCE	179.85
EFT35609	27/03/2014	WILD EYED PRESS	VARIOUS MERCHANDISE - CARDS, BOOKS, NOTEBOOKS ETC	297.31
EFT35610	27/03/2014	ADH GOLF & UTILITY VEHICLES	GOLF CART HIRE - CORYMBIA FESTIVAL 2014	660.00
EFT35611	27/03/2014	ROBERT EMERY	COUNCILLOR ALLOWANCE - 28/03/14 - 24/04/14	1965.39
EFT35612	27/03/2014	ZUMBA WITH ELJE	KEY BOND REFUND	50.00

<b>Chq/EFT</b>	<b>Date</b>	<b>Name</b>	<b>Description</b>	<b>Amount</b>
EFT35613	27/03/2014	EYEZON PTY LTD ( WHAT'S ON )	1/2 PAGE MONTHLY ADVERT FOR PERTH HILLS SPREAD	744.00
EFT35614	27/03/2014	ORORA LTD	WASTE CARDBOARD RECYCLING CHARGES	347.60
EFT35615	27/03/2014	DYMOCKS MIDLAND GATE	LIBRARY SUPPLIES	298.91
EFT35616	27/03/2014	SAFE T CARD AUSTRALIA PTY LTD	MONTHLY MONITORING CHARGES FOR VARIOUS LOCATIONS	99.00
EFT35617	27/03/2014	DAIMLER TRUCKS PERTH	PLANT/VEHICLE PARTS	91.88
EFT35618	27/03/2014	ALL STAR DISPLAYS PTY LTD	SUPPLY AND DELIVERY OF BANNERS	1507.00
EFT35619	27/03/2014	KALAJOS SCHOOL OF GYMNASTICS	KIDSPORT FUNDING FOR VARIOUS PLAYERS	200.00
EFT35620	27/03/2014	RAJESH MALDE	REFUND OF EMPLOYMENT CONTRACT ALLOWANCE	179.85
EFT35621	27/03/2014	ELECTRICAL TEST TAG & INSPECTION SERVICES (ETTIS)	ANNUAL TAGGING AND TESTING OF ELECTRICAL APPLIANCES	411.40
EFT35622	27/03/2014	VALLEY UNITED CHRISTIAN SOCCER CLUB	KIDSPORT FUNDING FOR VARIOUS PLAYERS	600.00
EFT35623	27/03/2014	MANDURAH PACKAGING	KITCHEN PRODUCTS, CLEANING GOODS AND CONSUMABLES	1174.98
EFT35624	27/03/2014	MPJ (WA) PTY LTD	SUPERANNUATION CONTRIBUTIONS	504.78
EFT35625	27/03/2014	ROCKWATER PTY LTD	WATER RESOURCE MANAGEMENT OPERATING STRATEGY	1461.63
EFT35626	27/03/2014	FRIENDS OF THE ART GALLERY OF WESTERN AUSTRALIA	ADVERTISING - ARTIFACTS FOR ZIG ZAG CULTURAL CENTRE	780.00
EFT35627	27/03/2014	RIDING FOR THE DISABLED ASSOC - SWAN VALLEY	KIDSPORT FUNDING FOR VARIOUS PLAYERS	200.00
EFT35628	27/03/2014	WARWICK CARTER	REFUND OF EMPLOYMENT CONTRACT ALLOWANCE	179.85
EFT35629	27/03/2014	SAM ASSAAD	REFUND OF EMPLOYMENT CONTRACT ALLOWANCE	149.85
EFT35630	27/03/2014	KERRY FRYERS	REFUND OF EMPLOYMENT CONTRACT ALLOWANCE	119.85

<b>Chq/EFT</b>	<b>Date</b>	<b>Name</b>	<b>Description</b>	<b>Amount</b>
EFT35631	27/03/2014	TOTAL GREEN RECYCLING	RECYCLING OF ELECTRICAL APPLIANCES AND EWASTE	2198.05
EFT35632	27/03/2014	DMC CLEANING	CLEANING OF VARIOUS SHIRE BUILDINGS	50765.53
EFT35633	27/03/2014	DAWOD JAVADI	LANDSCAPING AND FENCING REBATE - LOT 907 MARRIOT CRES.	5000.00
EFT35634	27/03/2014	CUROST MILK SUPPLY	MILK SUPPLY FOR ADMINISTRATION BUILDING & DEPOT	234.60
EFT35635	27/03/2014	ELAN ENERGY MANAGEMENT	COLLECTION OF TYRES	605.08
EFT35636	27/03/2014	ALLSECURE SERVICES PTY LTD	ELECTRONIC DOORS MAINTENANCE AND INSTALLATION SERVICES AT VARIOUS LOCATIONS	247.50
EFT35637	27/03/2014	DEMENTIA CARE AUSTRALIA	BOND REFUND FOR THE USE OF THE SEMINAR ROOM AT THE ZIG ZAG CULTURAL CENTRE	300.00
EFT35638	27/03/2014	GERARD THOMAS	REFUND OF EMPLOYMENT CONTRACT ALLOWANCE	149.85
EFT35639	27/03/2014	CIVIL SURVEY SOLUTIONS	AUTOCAD CIVIL 3D NETWORK LICENSES	24090.00
EFT35640	27/03/2014	RUEDEE HUSKING	CROSSOVER CONTRIBUTION	192.50
EFT35641	27/03/2014	MPK TREE SERVICES	TREE REMOVAL / BRANCH PRUNING AT VARIOUS LOCATIONS	4807.00
EFT35642	27/03/2014	BITUMEN SURFACING	ROAD MATERIALS FOR VARIOUS LOCATIONS	14064.60
EFT35643	27/03/2014	KALAMUNDA SHOW COMMITTEE	CONTRIBUTION TO KALAMUNDA SHOW	10000.00
EFT35644	27/03/2014	ZUMBA WITH CAROL - CAROL SHELDON	KEY BOND REFUND	50.00
EFT35645	27/03/2014	TURFWORKS WA PTY LTD	MOWING OF RESERVES AT VARIOUS LOCATIONS	4628.00
EFT35646	27/03/2014	MD TARIK IKBAL	CROSSOVER CONTRIBUTION	385.00
EFT35647	27/03/2014	A1 TROJAN PEST CONTROL	PEST CONTROL SERVICES FOR VARIOUS LOCATIONS	294.54
EFT35648	27/03/2014	DENISON WA PTY LTD	COLLECTION AND RETURN OF HOOK LIFT BINS	9938.50
EFT35649	27/03/2014	SPARKS REFRIGERATION AND AIRCONDITIONING	GAS REMOVAL SERVICES FOR WHITE GOODS AT WALLISTON TRANSFER STATION	1900.00

<b>Chq/EFT</b>	<b>Date</b>	<b>Name</b>	<b>Description</b>	<b>Amount</b>
EFT35650	27/03/2014	RAJESH & SANGITA PATIL	FENCING REBATE - LOT 914 MONARCH WAY WATTLE GROVE	1672.00
EFT35651	27/03/2014	ACVH PTY LTD	NOSE CONE FOR THE EMERGENCY MANAGEMENT TRAILER	487.00
EFT35652	27/03/2014	RIDING FOR THE DISABLED - HILLS GROUP	KIDSPORT FUNDING FOR VARIOUS PLAYERS	400.00
EFT35653	27/03/2014	STAN THE TYRE MAN ( STAN'S TYRE SERVICE WA )	PLANT / VEHICLE PARTS	264.00
EFT35654	27/03/2014	ORANGE GROVE HORSE AND PONY CLUB INC	KIDSPORT FUNDING FOR VARIOUS PLAYERS	200.00
EFT35655	27/03/2014	ZACKS COMMERCIAL ARTISTS	UNIFORM SUPPLIES - POLO SHIRTS	448.30
EFT35656	27/03/2014	GOSNELLS POLICE & COMMUNITY YOUTH CENTRE (PCYC)	KIDSPORT FUNDING FOR VARIOUS PLAYERS	440.00
EFT35657	27/03/2014	WOBBLYJULES INVESTMENTS FUND	SUPERANNUATION CONTRIBUTIONS	199.66
EFT35658	27/03/2014	HIT PRODUCTIONS PTY LTD	FIRST INSTALMENT 'MANAGING CARMEN' PERFORMANCE AT KALAMUNDA ARTS PERFORMING CENTRE	2200.00
EFT35659	27/03/2014	MANAAKI NETBALL CLUB	KIDSPORT FUNDING FOR VARIOUS PLAYERS	356.00
EFT35660	27/03/2014	PERTH WASTE PTY LTD	WEEKLY COLLECTION & DISPOSAL OF PUTRESCIBLE WASTE SERVICES	235998.40
EFT35661	27/03/2014	FORT KNOX RECORDS MANAGEMENT	OFFSITE STORAGE OF RECORDS	76.01
EFT35662	27/03/2014	AUSTRALIAN CATHOLIC SUPERANNUATION & RETIREMENT FUND (ACSRF)	SUPERANNUATION CONTRIBUTIONS	234.60
EFT35663	27/03/2014	ONE DEGREE ADVISORY PTY LTD	EXECUTIVE DEVELOPMENT FEES FOR 1 STAFF MEMBER	2722.50
EFT35664	27/03/2014	WEST COAST PRODUCTION SERVICES	CONSULTING SERVICES FOR THE PRODUCTION OF A FILM LOCATION PACKAGE FOR THE SHIRE	5500.00
EFT35665	27/03/2014	BLACK BOX CONTROL PTY LTD	MONTHLY FEE FOR THE 4 X GPS TRACKING UNITS INSTALLED ON OPERATIONS PLANT - MARCH 2014	660.00
EFT35666	27/03/2014	GOURMET COASTER	STAFF CATERING - CORYMBIA FESTIVAL 2014	375.90

<b>Chq/EFT</b>	<b>Date</b>	<b>Name</b>	<b>Description</b>	<b>Amount</b>
EFT35667	27/03/2014	ROSEMARY WALSH	SALE OF ARTWORK - CONNECTING COMMUNITIES EXHIBITION	168.00
EFT35668	27/03/2014	KALAMUNDA PATISSERIE	CATERING	24.50
EFT35669	27/03/2014	LEON ALLEN	SALE OF ARTWORK - KALAMUNDA LIONS CLUB ART AWARD 2014 EXHIBITION & PEOPLE'S PRIZE WINNER FOR SENIOR RESIDENT ART PRIZE	660.00
EFT35670	27/03/2014	THE SULLIVAN SUPER FUND	SUPERANNUATION CONTRIBUTIONS	651.29
EFT35671	27/03/2014	STRESS FREE DRESSING	AUTHOR TALK ON STRESS FREE DRESSING AT FORRESTFIELD LIBRARY	150.00
EFT35672	27/03/2014	NATASHA MILANKO	LIBRARY SUPPLIES	160.00
EFT35673	27/03/2014	GARY TICEHURST	REFUND OF EMPLOYMENT CONTRACT ALLOWANCE	180.00
EFT35674	27/03/2014	VERSER TECHNOLOGY LIFECYCLES PTY LTD	COLLECTION AND END OF LEASE SERVICES	683.54
EFT35675	27/03/2014	DAYTONE PRINTING PTY LTD	PRINTING OF BROCHURES FOR VARIOUS EVENTS	1230.70
EFT35676	27/03/2014	PPC WORLDWIDE PTY LTD	FIT FOR WORK STAFF TRAINING SESSIONS	4323.00
EFT35677	27/03/2014	ALLPET PRODUCTS	DOG/CAT SHELTER SUPPLIES	692.78
EFT35678	27/03/2014	NATIONAL HEART FOUNDATION OF AUSTRALIA - VIC DIVISION	HEART FOUNDATION YEARLY LICENCE FEE	82.50
EFT35679	27/03/2014	SYSTEMLINK HOLDINGS PTYLTD	SOUND & TECHNICAL ASSISTANCE FOR CORYMBIA FESTIVAL 2014	1400.00
EFT35680	27/03/2014	STILLPOINT COMMUNITIES INCORPORATED	YOUTH ENGAGEMENT ACTIVITIES AT CORYMBIA FESTIVAL	1584.00
EFT35681	27/03/2014	NATALIE MCDOWALL	SALE OF ARTWORK - CONNECTING COMMUNITIES EXHIBITION	38.50
EFT35682	27/03/2014	VIVIEN BURROWS	SALE OF ARTWORK - CONNECTING COMMUNITIES EXHIBITION	126.00
EFT35683	27/03/2014	LOUISE LODGE	SALE OF ARTWORK - CONNECTING COMMUNITIES EXHIBITION	49.00

<b>Chq/EFT</b>	<b>Date</b>	<b>Name</b>	<b>Description</b>	<b>Amount</b>
EFT35684	27/03/2014	CAROLYN MCINTOSH	SALE OF ARTWORK - CONNECTING COMMUNITIES EXHIBITION	84.00
EFT35685	27/03/2014	LA SALLE NETBALL CLUB INC	KIDSORT FUNDING FOR VARIOUS PLAYERS	200.00
EFT35686	27/03/2014	REBECCA SAVAGE	BIRTHDAY PARTY BOND REFUND FOR THE USE OF HARTFIELD PARK RECREATION CENTRE	50.00
EFT35687	27/03/2014	BANDURA HEADHUNTERS	FOOTPATH DEPOSIT REFUND	1000.00
EFT35688	27/03/2014	DAVID EDWARDS	SALE OF ARTWORK - CONNECTING COMMUNITIES EXHIBITION	84.00
EFT35689	27/03/2014	JENNIFER L SLEIGH (JENI SLEIGH)	SALE OF ARTWORK - KALAMUNDA LIONS CLUB ART AWARD 2014 EXHIBITION	420.00
EFT35690	27/03/2014	A CAPPELLA WEST	HALL, KEY & GRAND PIANO BOND REFUND	560.00
EFT35691	27/03/2014	NATALIE LEWIS & PAUL KOMADINA	KEY BOND REFUND	50.00
EFT35692	27/03/2014	KATHRYN HANCOCK	HALL & KEY BOND REFUND	1050.00
EFT35693	27/03/2014	SIMON TERRY	REFUND OF EMPLOYMENT CONTRACT ALLOWANCE	120.28
EFT35694	27/03/2014	AVRIL UNDERWOOD	KEY BOND REFUND	50.00
EFT35695	27/03/2014	PL & JC STEWART	KEY BOND REFUND	50.00
67557	07/03/2014	FINES ENFORCEMENT REGISTRY	FINES ENFORCEMENT REGISTRY	2752.00
67558	12/03/2014	HOSPITAL BENEFIT FUND OF WA	PAYROLL DEDUCTIONS	363.45
67559	12/03/2014	AUSTRALIAN SERVICES UNION	PAYROLL DEDUCTIONS	195.52
67560	12/03/2014	MUNICIPAL EMPLOYEES UNION	PAYROLL DEDUCTIONS	562.60
67561	12/03/2014	TELSTRA CORPORATION	TELEPHONE EXPENSES	27212.82
67562	12/03/2014	WATER CORPORATION	WATER USE AND SERVICE CHARGE FEES	766.76
67563	12/03/2014	BCITF	LEVY FEE - FEBRUARY 2014	18203.80
67564	12/03/2014	SYNERGY	POWER CHARGES	146943.65
67565	12/03/2014	DIRECTOR OF LICENSING SERVICES	NUMBER PLATES	400.00
67566	12/03/2014	BUILDING COMMISSION	BUILDING LEVY - FEBRUARY 2014	16134.56
67567	12/03/2014	CASH - ADMIN	PETTY CASH REIMBURSEMENT	988.40
67568	12/03/2014	CASH - KALAMUNDA LIBRARY	PETTY CASH REIMBURSEMENT	235.41

<b>Chq/EFT</b>	<b>Date</b>	<b>Name</b>	<b>Description</b>	<b>Amount</b>
67569	12/03/2014	CASH - FORRESTFIELD LIBRARY	PETTY CASH REIMBURSEMENT	112.18
67570	12/03/2014	CASH - HARTFIELD PARK	PETTY CASH REIMBURSEMENT	294.85
67571	12/03/2014	WESTSCHEME SUPERANNUATION	SUPERANNUATION CONTRIBUTIONS	585.71
67572	12/03/2014	REST SUPERANNUATION	SUPERANNUATION CONTRIBUTIONS	1399.51
67573	12/03/2014	AMP RETIREMENT SAVINGS ACCOUNT	SUPERANNUATION CONTRIBUTIONS	251.12
67574	12/03/2014	COGNET NOMINEES PTY LTD ACF MAP SUPER FUND	SUPERANNUATION CONTRIBUTIONS	92.74
67575	12/03/2014	COLONIAL 1ST STATE SUPERANNUATION	SUPERANNUATION CONTRIBUTIONS	823.02
67576	12/03/2014	HESTA SUPER FUND	SUPERANNUATION CONTRIBUTIONS	752.76
67577	12/03/2014	AMPLIFE LIMITED	SUPERANNUATION CONTRIBUTIONS	95.98
67578	12/03/2014	CASH - MEALS ON WHEELS	PETTY CASH REIMBURSEMENT	487.90
67579	12/03/2014	CASH - KALAMUNDA HACC	PETTY CASH REIMBURSEMENT	532.20
67580	12/03/2014	ANZ SUPER ADVANTAGE	SUPERANNUATION CONTRIBUTIONS	195.76
67581	12/03/2014	AMP SUPER LEADER	SUPERANNUATION CONTRIBUTIONS	97.30
67582	12/03/2014	CASH - HIGH WYCOMBE LIBRARY	PETTY CASH REIMBURSEMENT	123.08
67583	12/03/2014	ING INTEGRA PERSONAL SUPER	SUPERANNUATION CONTRIBUTIONS	118.59
67584	12/03/2014	HOSTPLUS PTY LTD	SUPERANNUATION CONTRIBUTIONS	116.62
67585	12/03/2014	AUSTRALIAN RETIREMENT FUND - ARF ADMINISTRATION	SUPERANNUATION CONTRIBUTIONS	134.00
67586	12/03/2014	COMMONWEALTH SUPERSELECT	SUPERANNUATION CONTRIBUTIONS	174.84
67587	12/03/2014	CASH - ZIG ZAG CULTURAL CENTRE	PETTY CASH REIMBURSEMENT	131.85
67588	12/03/2014	MACQUARIE WRAP	SUPERANNUATION CONTRIBUTIONS	618.73
67589	12/03/2014	WATER CORPORATION SUPERANNUATION PLAN	SUPERANNUATION CONTRIBUTIONS	216.40
67590	12/03/2014	TWU SUPERANNUATION FUND	SUPERANNUATION CONTRIBUTIONS	190.00
67591	12/03/2014	ONEPATH MASTERFUND	SUPERANNUATION CONTRIBUTIONS	182.44
67592	12/03/2014	ULTIMATE SUPERANNUATION SERVICE	SUPERANNUATION CONTRIBUTIONS	175.00
67593	12/03/2014	KINETIC SUPERANNUATION LTD	SUPERANNUATION CONTRIBUTIONS	182.61
67594	26/03/2014	HOSPITAL BENEFIT FUND OF WA	PAYROLL DEDUCTIONS	363.45

<b>Chq/EFT</b>	<b>Date</b>	<b>Name</b>	<b>Description</b>	<b>Amount</b>
67595	26/03/2014	AUSTRALIAN SERVICES UNION	PAYROLL DEDUCTIONS	195.52
67596	26/03/2014	MUNICIPAL EMPLOYEES UNION	PAYROLL DEDUCTIONS	562.60
67597	26/03/2014	TELSTRA CORPORATION	TELEPHONE EXPENSES	22.32
67598	26/03/2014	WATER CORPORATION	WATER USE AND SERVICE CHARGE FEES	20098.36
67599	26/03/2014	SYNERGY	POWER CHARGES	15196.25
67600	26/03/2014	ALINTA ENERGY	GAS CHARGES	85.45
67601	26/03/2014	RAC	ROADSIDE ASSISTANT	88.00
67602	26/03/2014	AUSTRALIAN INSTITUTE OF BUILDING SURVEYORS	REGISTRATION FOR 1 STAFF TO ATTEND THE AIBS WA CHAPTER CONFERENCE 2013	950.00
67603	26/03/2014	RANGE VIEW PARK TENNIS CLUB INC	FUNDING CONTRIBUTION TO RANGE VIEW PARK TENNIS CLUB FOR REPLACEMENT FENCING AND HIGH PRESSURE CLEAN OF COURTS 3 & 4	3040.00
67604	26/03/2014	CASH - KALAMUNDA LIBRARY	PETTY CASH REIMBURSEMENT	125.14
67605	26/03/2014	CASH - HARTFIELD PARK	PETTY CASH REIMBURSEMENT	102.10
67606	26/03/2014	WESTSCHEME SUPERANNUATION	SUPERANNUATION CONTRIBUTIONS	797.70
67607	26/03/2014	REST SUPERANNUATION	SUPERANNUATION CONTRIBUTIONS	1368.27
67608	26/03/2014	AMP RETIREMENT SAVINGS ACCOUNT	AUTHOR TALK ON STRESS FREE DRESSING AT FORRESTFIELD LIBRARY	285.34
67609	26/03/2014	CBUS SUPERANNUATION	SUPERANNUATION CONTRIBUTIONS	100.26
67610	26/03/2014	COGNET NOMINEES PTY LTD ACF MAP SUPER FUND	SUPERANNUATION CONTRIBUTIONS	88.20
67611	26/03/2014	COLONIAL 1ST STATE SUPERANNUATION	SUPERANNUATION CONTRIBUTIONS	835.34
67612	26/03/2014	HESTA SUPER FUND	SUPERANNUATION CONTRIBUTIONS	853.40
67613	26/03/2014	AMPLIFE LIMITED	SUPERANNUATION CONTRIBUTIONS	99.87
67614	26/03/2014	CASH - MEALS ON WHEELS	PETTY CASH REIMBURSEMENT	551.90
67615	26/03/2014	CASH - KALAMUNDA HACC	PETTY CASH REIMBURSEMENT	367.90
67616	26/03/2014	ANZ SUPER ADVANTAGE	SUPERANNUATION CONTRIBUTIONS	195.76
67617	26/03/2014	AMP SUPER LEADER	SUPERANNUATION CONTRIBUTIONS	110.23
67618	26/03/2014	CASH - HIGH WYCOMBE LIBRARY	PETTY CASH REIMBURSEMENT	12.10



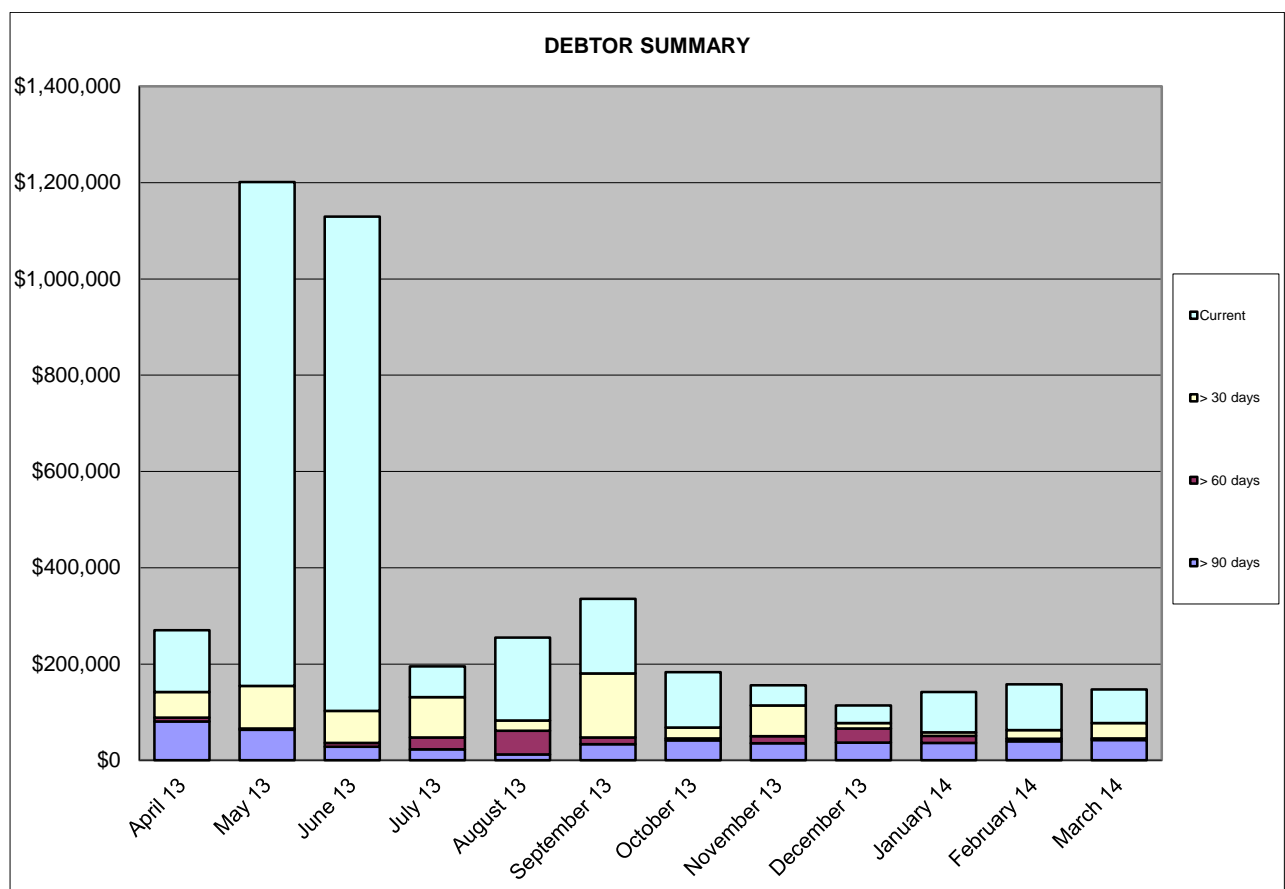
<b>Chq/EFT</b>	<b>Date</b>	<b>Name</b>	<b>Description</b>	<b>Amount</b>
67619	26/03/2014	ING INTEGRA PERSONAL SUPER	SUPERANNUATION CONTRIBUTIONS	95.78
67620	26/03/2014	HOSTPLUS PTY LTD	SUPERANNUATION CONTRIBUTIONS	115.09
67621	26/03/2014	AUSTRALIAN RETIREMENT FUND - ARF ADMINISTRATION	SUPERANNUATION CONTRIBUTIONS	127.46
67622	26/03/2014	COMMONWEALTH SUPERSELECT	SUPERANNUATION CONTRIBUTIONS	162.68
67623	26/03/2014	THE GOOD GUYS	ELECTRICAL SUPPLIES	220.00
67624	26/03/2014	CASH - KPAC	PETTY CASH REIMBURSEMENT	97.23
67625	26/03/2014	MACQUARIE WRAP	SUPERANNUATION CONTRIBUTIONS	618.73
67626	26/03/2014	WATER CORPORATION SUPERANNUATION PLAN	SUPERANNUATION CONTRIBUTIONS	238.67
67627	26/03/2014	TWU SUPERANNUATION FUND	SUPERANNUATION CONTRIBUTIONS	190.00
67628	26/03/2014	ONEPATH MASTERFUND	SUPERANNUATION CONTRIBUTIONS	182.44
67629	26/03/2014	ULTIMATE SUPERANNUATION SERVICE	SUPERANNUATION CONTRIBUTIONS	175.00
67630	26/03/2014	KINETIC SUPERANNUATION LTD	SUPERANNUATION CONTRIBUTIONS	180.20
				4612356.67

**Attachment 2**

**SHIRE OF KALAMUNDA  
 SUMMARY OF DEBTORS  
 FOR THE PERIOD ENDED 31st March 2014**

**Sundry Debtors Trial Balance - Summary Aged Listing**

	> 90 days	> 60 days	> 30 days	Current	Total
April 13	\$80,450	\$8,181	\$53,087	\$128,415	\$270,133
May 13	\$63,398	\$2,436	\$88,471	\$1,047,105	\$1,201,410
June 13	\$27,854	\$8,275	\$66,371	\$1,026,898	\$1,129,399
July 13	\$22,971	\$24,180	\$84,188	\$63,956	\$195,295
August 13	\$12,386	\$48,665	\$21,521	\$172,620	\$255,193
September 13	\$33,547	\$13,845	\$132,820	\$155,054	\$335,266
October 13	\$41,669	\$3,852	\$22,138	\$115,581	\$183,240
November 13	\$35,402	\$14,890	\$63,761	\$41,601	\$155,654
December 13	\$36,884	\$28,991	\$11,194	\$36,916	\$113,986
January 14	\$35,901	\$15,076	\$6,820	\$83,752	\$141,548
February 14	\$39,263	\$5,669	\$17,441	\$95,509	\$157,881
March 14	\$42,207	\$3,249	\$31,796	\$70,204	\$147,456



**SHIRE OF KALAMUNDA  
 SUMMARY OF DEBTORS  
 FOR THE PERIOD ENDED 31 March 2014**

AMOUNT	DEBTOR	DETAILS	STATUS
<b>&gt;90 days</b>			
\$4,559.57	Foothills Netball Association	Loan 216 / Operational Expenses	Club no longer operational. Shire has taken over operations from December 2013 onwards.
\$5,923.97	Forrestfield United Soccer Club	Loan 214	Loan payments deferred for 12 months as per Council Resolution A&R 08/2014.
\$24,000.00	Lesmurdie Tennis Club Inc *	Contribution to Extension	The Shire is monitoring - 2 instalment payments made.
\$6,650.75	Western Power *	Private Works - repair to damaged storm water pipes	2 Invoices. 1 invoice Western Power in discussion with the Shire regarding liability. 2nd invoice pending payment.
\$1,072.99	90+ Days Debts consisting of amounts under \$1,000.00.		Debtors to be contacted by telephone to advise debt recovery action pending / final notices issued or debt with D&B.
<b>\$42,207.28</b>	<b>Total Debts 90+ Days</b>		
<b>&gt;60 days</b>			
\$1,835.63	Zig Zag Café Kalamunda	Lease / Operational Expenses	Debtor committed to pay fortnightly instalments.
\$1,413.15	60+ Days Debts consisting of amounts under \$1,000.00.		All debtors to be contacted by telephone / email - copy invoices mailed as required.
<b>\$3,248.78</b>	<b>Total Debts 60+ Days</b>		
<b>&gt;30 days</b>			
\$4,093.20	Boldsilk Holdings Pty Ltd	Private Works WPC5	Reminder invoice sent.

\$17,109.86	Kalamunda Club	Loan 219	Reminder invoice sent.
\$1,751.09	Kalamunda Cricket Club	Operational Expenses Pat Moran Pavilion	Statement sent.
\$3,300.00	Western Australian Planning Commission	Fee - Bush Hazard Assessment	Debtor queried fee - addressed 17/03/14
\$3,180.23	Zig Zag Café Kalamunda	Lease / Operational Expenses	Debtor committed to pay fortnightly instalments.
\$2,362.09	30+ Days Debts consisting of amounts under \$1,000.00.		Reminder invoices to be sent.
<b>\$31,796.47</b>	<b>Total Debts 30+ Days</b>		
<b>&lt; 30 days</b>			
<b>\$71,785.65</b>	<b>Total of Current Debts</b>		
<b>\$1,582.13</b>	<b>Total of Accounts in Credit</b>		
<b>\$147,456.05</b>	<b>Total - Debtors Trial Balance</b>		
<b>FOOTNOTES</b>			
* Denotes currently in negotiation of invoice amount and details			
^ Denotes payment arrangement in place			

**Attachment 3**

**SHIRE OF KALAMUNDA**  
**SUMMARY OF CREDITORS**  
**FOR THE PERIOD ENDED 31 MARCH 2014**

**Sundry Creditors Trial Balance - Summary Aged Listing**

Month End	> 90 days	> 60 days	> 30 days	Current	Total
31/07/2012	\$1,129	\$2,418	\$829,279	\$1,240,322	\$2,073,148
31/08/2012	\$5,953	\$434	\$10,731	\$1,784,665	\$1,801,783
30/09/2012	\$13,713	\$1,630	\$6,362	\$1,036,804	\$1,058,509
31/10/2012	\$923	\$91,135	\$40,634	\$1,275,858	\$1,408,551
30/11/2012	\$8,738	\$4,059	\$10,289	\$1,387,687	\$1,410,773
31/12/2012	\$8,580	-\$454	\$53,987	\$544,597	\$606,710
31/01/2013	\$2,275	-\$4	\$10,756	\$380,050	\$393,077
28/02/2013	-\$191	-\$154	\$8,042	\$500,380	\$508,078
31/03/2013	-\$344	\$6,566	\$5,034	\$163,125	\$174,380
30/04/2013	\$7,253	\$39,057	\$10,266	\$690,585	\$747,161
31/05/2013	\$1,225	\$942	\$14,952	\$1,077,590	\$1,094,709
30/06/2013	\$9,393	\$13,544	\$364,665	\$1,914,271	\$2,301,873
31/07/2013	\$3,168	\$30,928	\$7,860	\$704,407	\$746,364
31/08/2013	\$1,618	\$6,095	\$46,102	\$542,740	\$596,555
30/09/2013	\$3,630	\$53,734	\$7,014	\$383,394	\$447,773
31/10/2013	\$12,120	\$1,454	\$107,830	\$1,566,553	\$1,687,957
30/11/2013	\$12,873	\$19,461	\$188,950	\$1,734,521	\$1,955,805
31/12/2013	\$1,090	\$8,183	\$10,820	\$781,525	\$801,618
31/01/2014	\$38,061	-\$3,986	\$64,483	\$863,813	\$962,372
28/02/2014	\$35,788	\$938	-\$2,540	\$2,145,331	\$2,179,518
31/03/2014	\$2,606	-\$2,850	\$14,442	\$846,590	\$860,788

**Comment**

- > 90 days      Original Invoices for Trisleys Hydraulic Services, Perry Environmental Contracting, M2 Technology & Circuitwest Inc not received in Accounts to process
- > 60 days      Original Invoices for EMRC, Silvio Otranto, Wurth Australia P/L, Hills Gourmet & M2 Technology and a Credit for Datacom Systems not received in Accounts to process.
- > 30 days      These invoices are paid on the third fortnightly payment run.

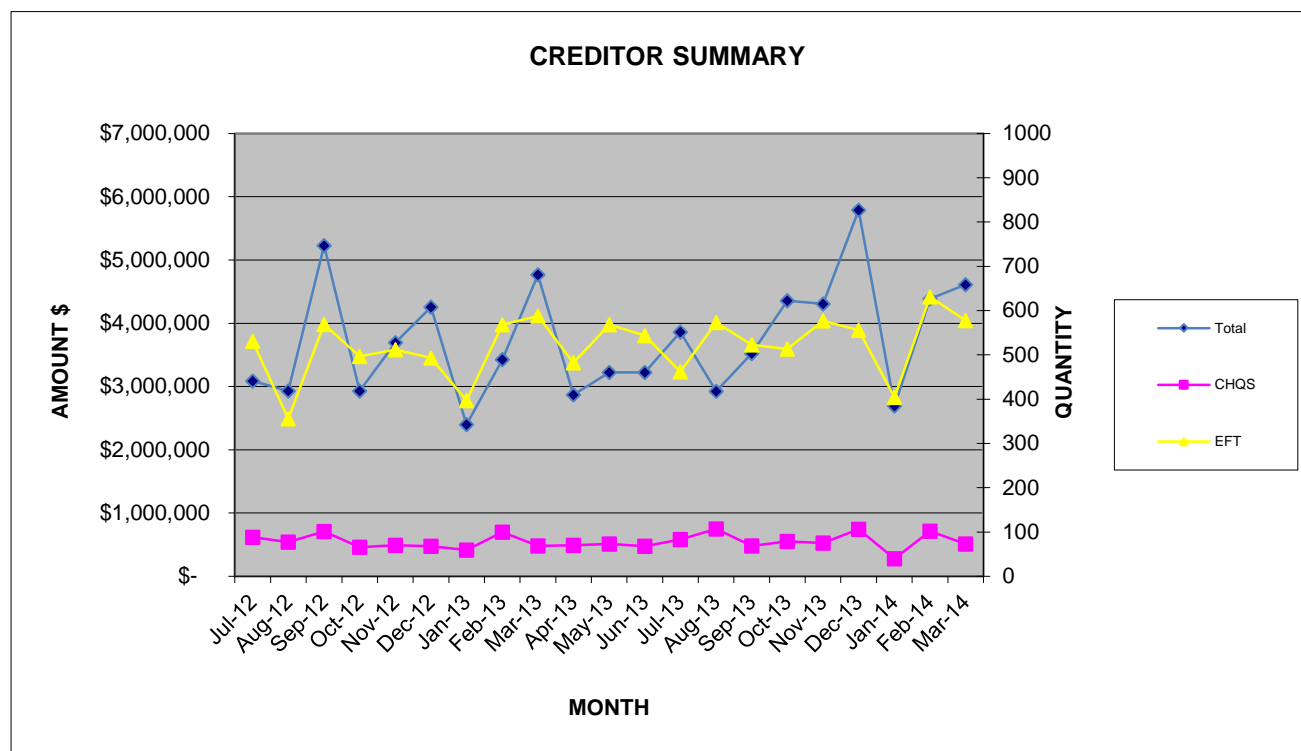
**Creditor Payments made**

Month	Amount \$	Quantity		
		Cheques	EFTs	Total
Jul-12	\$ 3,085,557	88	531	619
Aug-12	\$ 2,928,637	77	356	433
Sep-12	\$ 5,229,543	101	569	670
Oct-12	\$ 2,931,587	66	497	563
Nov-12	\$ 3,692,467	70	512	582
Dec-12	\$ 4,255,844	68	493	561
Jan-13	\$ 2,396,387	59	397	456
Feb-13	\$ 3,426,479	100	568	668
Mar-13	\$ 4,766,915	69	588	588
Apr-13	\$ 2,869,343	70	482	552
May-13	\$ 3,222,475	73	568	641
Jun-13	\$ 3,221,716	68	544	612
Jul-13	\$ 3,861,531	83	462	545
Aug-13	\$ 2,924,590	107	573	680
Sep-13	\$ 3,520,038	69	523	592
Oct-13	\$ 4,358,209	79	513	592
Nov-13	\$ 4,306,884	75	577	652
Dec-13	\$ 5,791,804	106	556	662
Jan-14	\$ 2,690,559	40	404	444
Feb-14	\$ 4,390,155	102	631	733
Mar-14	\$ 4,612,357	73	578	651

\*Excludes net staff payroll

\*Creditors on 30 day terms are paid on the 28th of the month following.

\*Local suppliers are paid on 14 day terms.



---

**Declaration of financial / conflict of interests to be recorded prior to dealing with each item.**

**14. Rates Debtors Report for the Period Ended 31 March 2014**

Previous Items	N/A
Responsible Officer	Director Corporate Services
Service Area	Finance
File Reference	FI-DRS-004
Applicant	N/A
Owner	N/A

Attachment 1                      Summary of Outstanding Rates for the period ended 31 March 2014

**PURPOSE**

1. To receive a report on rates debtors for the period ended 31 March 2014.

**BACKGROUND**

2. Attached is the report detailing rates debtors for the period ended 31 March 2014 (Attachment 1).
3. Rates notices were issued on 8 July 2013

Instalment dates are as follows:

Option 1 (Full Payment) - By 12 August 2013

Option 2 (Two Instalments) – 1<sup>st</sup> Instalment Date by 12 August 2013  
2<sup>nd</sup> Instalment Date by 16 December 2013

Option 3 (Four Instalments) – 1<sup>st</sup> Instalment Date by 12 August 2013  
2<sup>nd</sup> Instalment Date by 14 October 2013  
3<sup>rd</sup> Instalment Date by 16 December 2013  
4<sup>th</sup> Instalment Date by 10 February 2014

A grace period of two weeks was given before closing the instalment period. Any amounts outstanding on those ratepayers with an instalment option are regarded as defaulted and essentially fall off from this arrangement. The Shire can accept a direct debit payment arrangement to finalise the balance or a special payment arrangement is made in extenuating circumstances. Strict protocols are maintained so that the Shire is seen to be fair and equitable to all ratepayers.

4. 813 Letter of Demands were sent to outstanding ratepayers on 12 November 2013 and all but 62 have either paid in full or have taken up a direct debit payment arrangement to pay the balance of their rates.
5. As noted on (Attachment 1), the Shire has collected \$27,053,522 or 96% of the debt from the date the rates and service charges were raised. As a comparison, last year's collection of rates were lower at 94% mainly due to the delay in issuance of the rates notices.

- 
6. Significant progress has been made in raising Interim rates with \$243,509 having been raised to March 2014 so far. The catch up on outstanding interim rates scheduled is almost complete and will be finalised in April.

## **DETAILS**

### **Debt Recovery**

- 7.
- All of the 22 outstanding debts from 2012/13 that remain with Dun & Bradstreet (D&B) have had Judgement entered against them; 8 have been served with a Property Seizure & Sales Order (PSSO). The balance are still to have PSSO issued once located.
  - As indicated in point 4 above, there were still 62 ratepayers who have not responded to D&B. The Shire has now requested D&B to proceed to Judgement on the 62 properties where no response or payment has been received. Judgement has now been applied to 50 of these.
  - 396 outstanding debts are deemed too small in value (i.e. <\$500) to warrant legal action and will be followed up in house.
  - 668 Final notices were sent out on 25 March 2014 for the final instalment payment to which we have had a good response.
  - A report will be brought to Council to approve those that have proceeded to Judgment and have still not satisfied the claim to proceed towards issuance of a Land Warrant.

## **STATUTORY AND LEGAL CONSIDERATIONS**

8. The Shire collects its rates debts in accordance with the *Local Government Act (1995) Division 6 – Rates and Service Charges under the requirements of subdivision 5 – Recovery of unpaid rates and service charges.*

## **POLICY CONSIDERATIONS**

9. Nil.

## **COMMUNITY ENGAGEMENT REQUIREMENTS**

10. Nil.

## **FINANCIAL CONSIDERATIONS**

11. The early raising of rates in July has allowed the Shires operations to commence without delays in addition to earning additional interest.



---

## STRATEGIC COMMUNITY PLAN

### Strategic Planning Alignment

12. *Kalamunda Advancing: Strategic Community Plan to 2023*

OBJECTIVE 6.8 – To ensure financial sustainability through the implementation of effective financial management, systems and plans.

Strategy 6.8.4 Provide effective financial services to support the Shire's operations and to meet sustainability planning, reporting and accountability requirements.

## SUSTAINABILITY

### Social Implications

13. Debt collection can have implications upon those ratepayers facing hardship and the Shire must ensure equity in its debt collection processes.

### Economic Implications

14. Effective collection of all outstanding debtors leads to enhanced financial sustainability for the Shire.

### Environmental Implications

15. Nil.

## RISK MANAGEMENT CONSIDERATIONS

16.

Risk	Likelihood	Consequence	Rating	Action/Strategy
The Shire is exposed to the potential risk of the ratepayer failing to make payments which it is obligated to do. This will result in the disruption of cash flows and increased collection costs.	Unlikely	Minor	Low	Ensure debt collections is rigorously managed.

## OFFICER COMMENT

17. Nil.

---

<b>Voting Requirements: Simple Majority</b>
---

**OFFICER RECOMMENDATION (C&C 14/2014)**

That Council:

1. Receives the rates debtors report for the period ended 31 March 2014 (Attachment 1).

Moved:

Seconded:

Vote:

**Attachment 1**

**SHIRE OF KALAMUNDA**

**SUMMARY OF OUTSTANDING RATES**

**FOR THE PERIOD ENDED 31 March 2014**

**Rates Outstanding Debtors**

	3rd Previous Year + Outstanding	2nd Previous Year Outstanding	Previous Year Outstanding	Current Outstanding	Total Outstanding	Previous Year Total Outstanding
31/07/2013	\$315,936	\$94,910	\$295,163	\$22,754,586	\$23,460,595	<b>\$779,089</b>
31/08/2013	\$313,756	\$91,341	\$223,784	\$14,084,885	\$14,713,766	<b>\$22,398,443</b>
30/09/2013	\$310,039	\$87,180	\$183,695	\$12,571,976	\$13,152,890	<b>\$13,496,792</b>
30/10/2013	\$309,076	\$83,444	\$165,097	\$10,113,059	\$10,670,676	<b>\$12,802,377</b>
30/11/2013	\$305,152	\$81,878	\$142,520	\$8,882,464	\$9,412,015	<b>\$9,569,596</b>
31/12/2013	\$302,318	\$79,071	\$131,332	\$5,186,504	\$5,699,225	<b>\$8,630,908</b>
31/01/2014	\$299,941	\$76,726	\$123,954	\$4,141,098	\$4,641,719	<b>\$5,563,543</b>
28/02/2014	\$298,729	\$76,379	\$118,713	\$1,925,318	\$2,419,139	<b>\$4,523,618</b>
31/03/2014	\$297,104	\$70,986	\$113,062	\$1,128,634	\$1,609,787	<b>\$2,052,964</b>
30/04/2014					\$0	
31/05/2014					\$0	
30/06/2014					\$0	

**Rate Levied  
 2013/2014**

Interim 2013/2014

Back Rates

**Total Levies To Date for  
 2013/14**

<b>\$28,416,654</b>
\$243,509
\$3,146
<b>\$28,663,309</b>

Total Rates Outstanding

1,609,787

Current Deferred Rates Amount  
 (from Rate Reports)

**\$ 463,579**

**Total Rates amount to be collected not including deferred**

**\$1,146,208**

% of Rates  
 Outstanding :

**4.06%**

**Comment**

The 2013/2014 Instalment Dates are as follows:

	4xinstalments	2xinstalments
1st Instalment	12/08/2013	12/08/2013
2nd Instalment	14/10/2013	16/12/2013
3rd Instalment	16/12/2013	
4th Instalment	10/02/2014	

---

**10.0 MOTIONS OF WHICH PREVIOUS NOTICE HAS BEEN GIVEN**

**11.0 QUESTIONS BY MEMBERS WITHOUT NOTICE**

**12.0 QUESTIONS BY MEMBERS OF WHICH DUE NOTICE HAS BEEN GIVEN**

**12.1 Question from C&C Meeting 17 March 2014**

Report 09. Debtors and Creditors Report for the Period Ended 28 February 2014

*A Councillor had requested information regarding EFT 34476 to Vodaphone, he noted that the amount is for the January 2014 paging/messaging service used by the Bushfire Brigade however would like more information. This was taken on notice by the Director Corporate Services.*

The \$2999.99 is inclusive of GST. It relates to the February 2014 charge, which is in part a combination of \$900.98 State Emergency Services and \$1826.28 for Bush Fire Brigade ex GST.

The amount in question is purely coincidental as can be seen from the extract, each month, the charges vary depending on how many messages have been transmitted.

**13.0 URGENT BUSINESS APPROVED BY THE PRESIDING MEMBER OR BY DECISION**

**14.0 MEETING CLOSED TO THE PUBLIC**

**15.0 CLOSURE**