

Annual General Electors Meeting

Agenda for Monday 10 February 2014



**shire of
kalamunda**

NOTICE OF MEETING ANNUAL GENERAL ELECTORS MEETING

Dear Councillors

Notice is hereby given that the Annual General Electors Meeting will be held in the Council Chambers, Administration Centre, 2 Railway Road, Kalamunda on **Monday 10 February 2014 at 6.15pm.**



Rhonda Hardy
Chief Executive Officer
5 February 214

Our Vision and Our Values

Our Vision

The Shire will have a diversity of lifestyle and people. It will take pride in caring for the natural, social, cultural and built environments and provide opportunities for people of all ages.

Our Core Values

Service – We deliver excellent service by actively engaging and listening to each other.

Respect – We trust and respect each other by valuing our difference, communicating openly and showing integrity in all we do.

Diversity – We challenge ourselves by keeping our minds open and looking for all possibilities and opportunities.

Ethics – We provide honest, open, equitable and responsive leadership by demonstrating high standards of ethical behavior.

Our Aspirational Values

Prosperity – We will ensure our Shire has a robust economy through a mixture of industrial and commercial development.

Harmony – We will retain our natural assets in balance with our built environment.

Courage – We take risks that are calculated to lead us to a bold new future.

Creativity – We create and innovate to improve all we do.

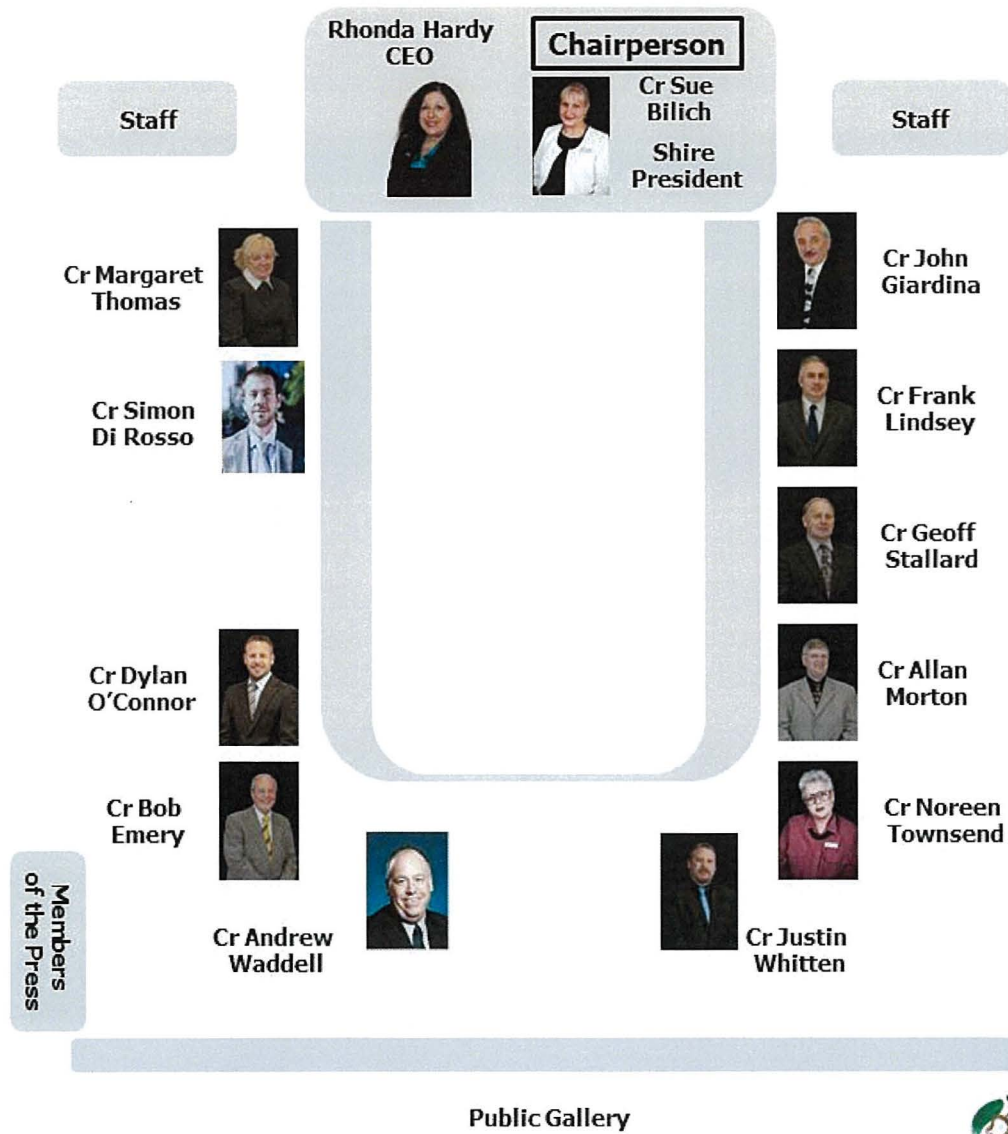


INFORMATION FOR THE PUBLIC ATTENDING COUNCIL MEETINGS

Welcome to this evening's meeting. The following information is provided on the meeting and matters which may affect members of the public.

If you have any queries related to procedural matters, please contact a member of staff.

Council Chambers – Seating Layout



Annual General Electors Meeting – Procedures

1. Annual General Electors Meetings are open to the general Public, however, only Electors may vote on a motion.
2. The Shire President is the authorised chair of the meeting.
3. Members of the public who are unfamiliar with meeting proceedings are invited to seek advice prior to the meeting from a Shire Staff Member.
4. Members of the public are able to ask questions or raise issues of concern during Any Other General Business.
5. To facilitate the smooth running of the meeting, silence is to be observed in the public gallery at all times except when asking questions.
6. All other arrangements are in general accordance with Council's Standing Orders, the Policies and decision of the Shire or Council.

Emergency Procedures

Please view the position of the Exits, Fire Extinguishers and Outdoor Assembly Area as displayed on the wall of Council Chambers.

In case of an emergency follow the instructions given by Council Personnel.

We ask that you do not move your vehicle as this could potentially block access for emergency services vehicles.

Please remain at the assembly point until advised it is safe to leave.

INDEX

1.0	OFFICIAL OPENING	6
2.0	ATTENDANCE, APOLOGIES AND LEAVE OF ABSENCE PREVIOUSLY APPROVED	6
3.0	PRESENTATION OF THE 2013 ANNUAL REPORT	6
4.0	ANY OTHER BUSINESS.....	6
5.0	CLOSURE	6

AGENDA

1.0 OFFICIAL OPENING

2.0 ATTENDANCE, APOLOGIES AND LEAVE OF ABSENCE PREVIOUSLY APPROVED

3.0 PRESENTATION OF THE 2013 ANNUAL REPORT

That the 2013 Annual Report of the Shire of Kalamunda be received.

Moved:

Seconded:

Vote:

4.0 ANY OTHER BUSINESS

5.0 CLOSURE