

Community Hubs & Safety – Fire and Emergency Management

# Bushfire Compliance Season Summary Report

## 2025/2026



Document	Bushfire Compliance Season Summary Report 2025/2026
Prepared by	Community Hubs & Safety
Version	1
Classification	<input type="checkbox"/> Internal <input checked="" type="checkbox"/> External

## Disclaimer

All data and information in this report are provided in good faith and make no representation or warranty regarding its accuracy, availability, or completeness. This document is not intended to be operational in nature, and all agencies are responsible for undertaking prevention, preparedness, response, and recovery plans and/or strategies in their capacities.

## Acknowledgement

The City of Kalamunda's bushfire compliance season is indicative of the declaration made under sections 17, 18 and 33 of the *Bush Fires Act 1954*, *Bush Fires Regulations 1954*, and all authorisations for local government to modify such dates determined by local conditions. Commonly, bushfire compliance seasons across the Perth Metropolitan area commence each year from 1st October and conclude on 31st May the following year.

The summary acknowledges external agencies that through their media platforms and documentation have contributed to expanding the context surrounding the local data captured for the City of Kalamunda.



# Table of Contents

Disclaimer.....	2
Acknowledgement.....	2
Contents.....	3
Executive Summary.....	4
Purpose.....	5
Scope.....	5
Aim.....	5
Context.....	5
TABLE 1.....	6
FIGURE 1.....	6
Objectives.....	7
Outcomes.....	7
Permits to Burn.....	7
FIGURE 2.....	7
Illegal Burning.....	7
FIGURE 3.....	7
Variations.....	8
FIGURE 4.....	8
Fire Hazard Assessments.....	8
TABLE 2.....	9
TABLE 3.....	9
TABLE 4.....	10
FIGURE 5.....	10
Breakdown by Zone and Suburb.....	11
FIGURE 6.....	13
FIGURE 7.....	13
Preseason Engagement.....	14
Fire Hazard Reduction Notice.....	14
Measure of Achievement.....	17

## Executive Summary

The City of Kalamunda continued to implement its five-year Fire Hazard Assessment Plan 2023 to 2028 this season. The program aimed at evaluating bushfire readiness on privately owned properties. This plan embodies a fair and equitable approach to managing bushfire risks, incorporating strategies to ensure both compliance and preparedness with an emphasis on education in the first instance.

The Community Bush Fire Preparedness team collaborates with the community year-round, by attending a range of community engagement events before the commencement of the bushfire compliance season.

Key outcomes and observations from the 2025/26 Fire Hazard compliance period, covering property assessments undertaken between 1 November 2025 and 31 March 2026, include:

- 3,198 total assessments completed;
- 2,576 individual properties attended;
- 2,890 assessment outcomes requiring no further action;
- 241 work orders were issued, comprising of 737 individual remediation items;
- 28 infringement notices issued; and
- 43 work orders outstanding at the close of the inspection period.

The number of permits to burn increased from 92 to 155 with Kalamunda being the highest suburb for Permits being issued.

Illegal burning incidents were seen across many suburbs this season, mainly in the foothills which recorded the most breaches. These areas will be considered for a more targeted engagement approach in burning requirements and bushfire safety.

Lifetime variations decreased because of ongoing approvals carried over from the previous year, while grazing variation approvals experienced a slight increase.

## Purpose

The purpose of this report is to provide a summary of the City of Kalamunda's bushfire compliance outcomes from 1 October 2025 to 31 May 2026. This report was developed to expand on the City's prior documentation by including all elements of bushfire compliance and efforts toward bushfire preparedness.

## Scope

The report refers to specific data collected from the City's internal corporate systems.

1. Permits to burn.
2. Illegal burns.
3. Fire hazard assessments and the recorded outcomes

## Aim

This report aims to analyse the data collected throughout the local 2025/2026 bushfire compliance season to develop stronger engagement plans, more targeted communication strategies, and to review compliance procedures under the authority of the *Bush Fires Act 1954* (the Act) and *Bush Fires Regulations 1954*. The report will also provide the City with valuable information to assist with reviewing processes and working through a process of continuous improvement.

## Context

The report has been developed to align with the City's strategic objectives (Table 1) along with the 2019 Lesson Management Cycle produced by the Australian Institute for Disaster Resilience (figure 1).

**Table 1: Kalamunda Advancing Strategic Community Plan to 2031 Objectives**

Priority 1: Kalamunda Cares and Interacts	
Objectives	Strategies
1.1 To be a community that advocates, facilitates, and provides quality lifestyle choices	1.1.1 Facilitate the inclusion of the ageing population and people with disability to have access to information, facilities, and services.
	1.1.2 Empower, support, and engage and with young people, families, and our culturally diverse community.
1.2 To provide safe and healthy environments for community to enjoy.	1.2.1 Facilitate a safe community environment.

**Table 1: Kalamunda Advancing Strategic Community Plan to 2031 Objectives (cont.)**

Priority 4: Kalamunda Leads	
Objectives	Strategies
4.1 To provide leadership through transparent governance.	4.1.1 Provide good governance
4.2 To proactively engage and partner for the benefit of community.	4.2.1 Actively engage with the community in innovative ways.
	4.2.2 Increase advocacy activities and develop partnerships to support growth and reputation.

**Figure 1: Lessons Management Cycle (AIDR, 2019)**

## Objectives

The City's emergency management approach is based on the Prevention, Preparedness, Response, and Recovery (PPRR) model, with a strong emphasis on building bushfire-resilient communities.

Each year, our aim is to review and issue the Fire Hazard Reduction Notice (FHRN), in line with Section 33 of the *Bush Fires Act 1954*, by July. This timeline ensures we have enough time to:

- Include the notice with the City's annual rates and publish it in the local newspaper.
- Deliver updated training for our Community Bushfire Preparedness Officers (CBPOs), helping them refresh their knowledge ahead of the bushfire compliance season. All CBPOs will carry out property fire hazard assessments in a fair, consistent, and professional manner, following the City's established procedures.
- Make sure all bushfire preparedness activities are aligned with City policies. These processes will be reviewed at the end of each season to identify any gaps and make necessary improvements.

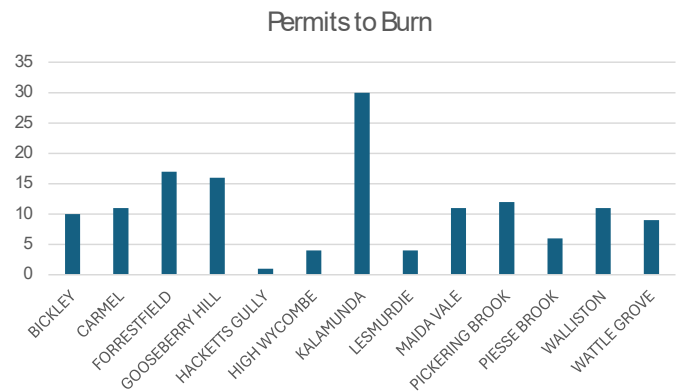
Throughout the bushfire compliance season, we are committed to applying enforcement measures in a fair and consistent way, in line with the *Bush Fires Act 1954* and *Bush Fires Regulations 1954*.

## Outcomes

### Permits to Burn

155 permits were issued, which is an increase of 68% compared to the same period last year. Permits to burn are required during the restricted burning period of 1 October to 30 November and 1 April to 31 May.

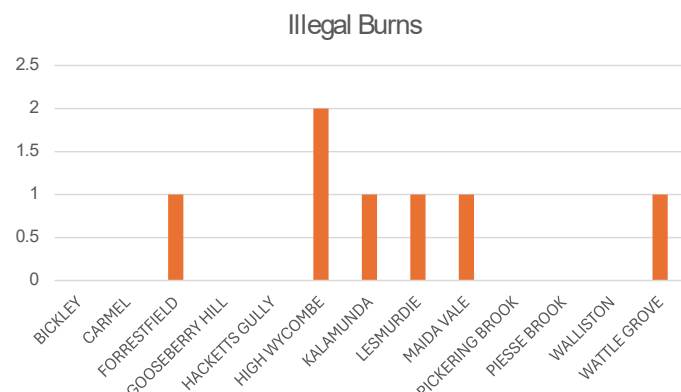
**Figure 2: Burn Permits by suburb**



### Illegal Burning

Seven reports of illegal burning were attended by City of Kalamunda Officers during the season. Infringements were issued in all instances of non-compliant burning. Illegal burning continues to be concentrated in the foothills, with High Wycombe again recording the highest number of offences.

**Figure 3: Illegal Burns by suburb**

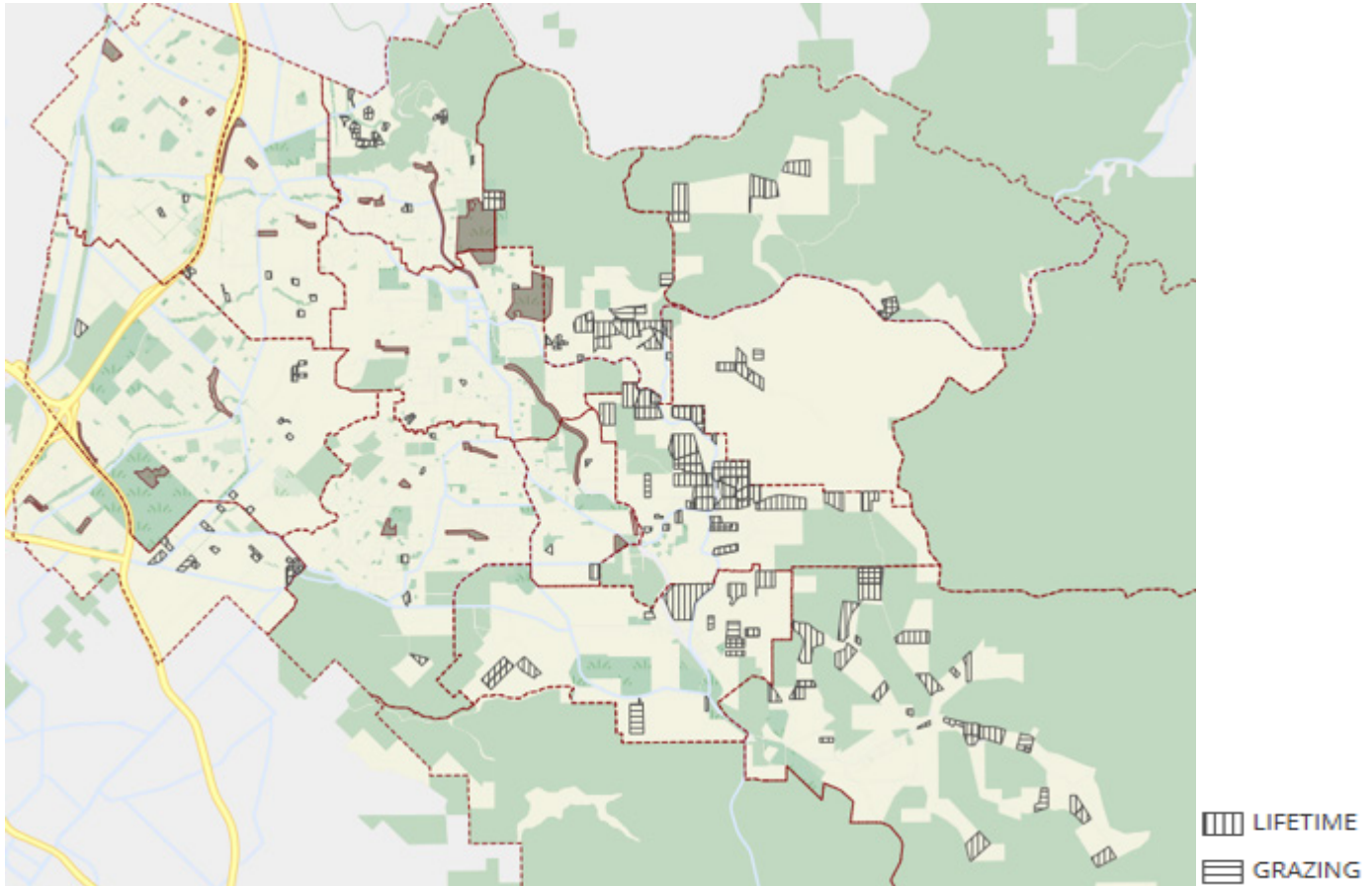


## Variations

28 variations were approved;

- 5 new Lifetime applications
- 23 for Grazing

**Figure 4: Approved Variations Map**



## Fire Hazard Assessments

Final Outcomes:

- **3,198** Total Assessments completed.
- **2,576** Individual properties attended.
- **241** work orders were issued, comprising of **737** individual remediation items.
- **28** Infringements issued.

The City of Kalamunda has 23,340 private residential properties (2021 ABS) within the City. The assessments were conducted on 2,576 of these properties (11%). Officers completed 3,198 assessments, which resulted in 241 work orders being issued for a total of 737 items to be remediated.

**Table 2: Work Order by Category**

Items	Count
Additional Works	43
Firebreaks	256
APZ	94
Fuel Loading	344
<b>Total</b>	<b>737</b>

**Table 3: Work Order Items by Suburb**

SUBURB	Work Order Items											TOTAL
	Additional Works	Dead flammable materials [leaf litter, twigs etc] across the entire property are NOT reduced down below 8 tonnes per hectare?	Dead flammable materials within the APZ are NOT reduced to 2 tonnes per hectare or less?	Dead grass, dead shrubs and dead plants are NOT slashed to a height no greater than 50mm across the property?	Firebreaks are NOT continuous (no dead ends) or trafficable.	Firebreaks are NOT 3 metres Wide	Firebreaks are NOT 4 metres High	Firebreaks are not free of Dead Flammable or combustible material	Gutters are Not free of flammable matter.	Trees or shrubs that are within 2 metres of the asset are NOT pruned 2 metres or more away from the asset	Trees over 5 M in height within the APZ are NOT under-pruned up to 2 metres	
Bickley		3	2	16		5	3	12	2			42
Carmel				2		2	1	3				8
Forrestfield	12	21	2	39	3	6	4	11	13	2	2	115
Gooseberry Hill	3	6		17	1	5	4	12	3	1		52
Hacketts Gully					1		1					2
High Wycombe	2	16	2	29	4	11	5	12	7	4	2	94
Kalamunda	7	19		23			1	1	9			60
Lesmurdie	7	12		20				1	16			56
Maida Vale	1	5	1	19		4	1	5	1	3		40
Pickering Brook			1	8		1	1	6				17
Piesse Brook		1	1	9	3	6	5	12	2	2		41
Walliston				1			1	1				3
Wattle Grove	11	17	7	47	15	26	24	34	13	6	7	207
<b>Total</b>	<b>43</b>	<b>100</b>	<b>16</b>	<b>232</b>	<b>24</b>	<b>66</b>	<b>51</b>	<b>110</b>	<b>66</b>	<b>18</b>	<b>11</b>	<b>737</b>

Officers completed follow-up assessments on the majority of properties by 31 March 2026. During the inspection period, 39 inspection outcomes were recorded as "Property Inaccessible". Through subsequent inspections and compliance activities, this number was reduced to 18 properties that remained inaccessible at the close of the bushfire compliance season. At the same time, 43 work orders remained outstanding, while 2,890 properties had achieved compliance with the notice by the end of the bushfire compliance season.

**Table 4: Total of End-of-Season Assessment Status**

Inspection Outcome	Number of Inspections	Total Percentages
Infringements	28	0.9%
No Action Required	2890	90.4%
Property Inaccessible	39	1.2%
Work Order	241	7.5%
<b>Total</b>	<b>3198</b>	<b>100%</b>

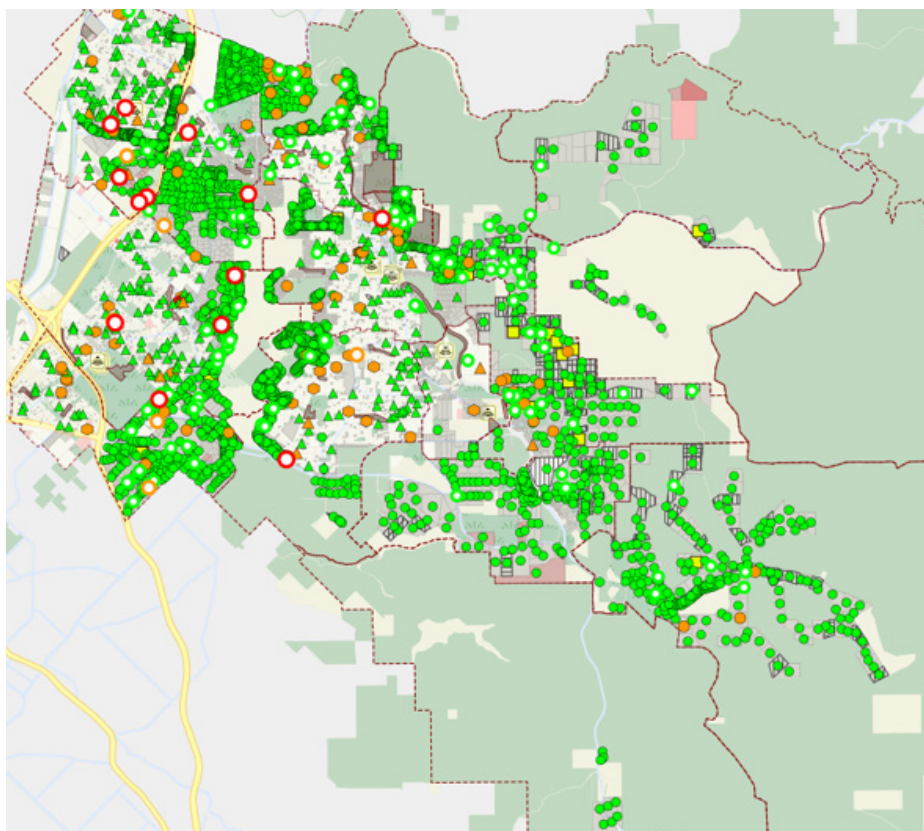
Note: Inspection outcomes represent individual inspection results and may include multiple inspections of the same property.

As per the execution of the plan, if a property remained in breach of the Notice after the initial work order was sent and the 21 days have passed, an infringement can be issued along with a further work order to action.

A total of 28 infringements were issued due to failure to take sufficient action in response to work order notices.

Property owner and/or land occupier that are issued a Section 33 Bushfire Infringement have the right to appeal if the reason for wanting to appeal falls under the appealable grounds. There were 12 appeals this season with only one being successful leaving 11 infringements valid.

**Figure 5: Map of all Inspections for 2025/2026**



- ▲ Zoning Fire Assessment: Infringement and Work Order
- ▲ Zoning Fire Assessment: Work Order
- ▲ Zoning Fire Assessment: No Action Required
- Complaint Assessment: Infringement and Work Order
- Complaint Assessment: Work Order
- Complaint Assessment: No Action Required
- Infringement and Work Order
- Work Order
- No Action Required
- Hazard Assessment: Infringement and Work Order
- Hazard Assessment: Work Order
- Hazard Assessment: No Action Required

## Breakdown by Zone and Suburb

### Rural Eastern District

	Number	Percentage
<b>BICKLEY</b>		
Total Inspections	127	
Inaccessible	10	7.9%
Over 5000m <sup>2</sup>		
Infringements Issued	1	0.8%
Compliant Outcome	98	75.6%
Work Order Issued	20	15.7%
Under 5000m <sup>2</sup>		
Infringements Issued	0	0.0%
Compliant Outcome	11	8.7%
Work Order Issued	1	0.8%
<b>CARMEL</b>		
Total Inspections	178	
Inaccessible	0	0.0%
Over 5000m <sup>2</sup>		
Infringements Issues	0	0.0%
Compliant Outcome	121	68.0%
Work Order Issued	3	1.7%
Under 5000m <sup>2</sup>		
Infringements Issued	0	0.0%
Compliant Outcome	51	28.7%
Work Order Issued	0	0.0%
<b>HACKETTS GULLY</b>		
Total Inspections	15	
Inaccessible	0	0.0%
Over 5000m <sup>2</sup>		
Infringements Issued	0	0.0%
Compliant Outcome	13	86.7%
Work Order Issued	1	6.7%
Under 5000m <sup>2</sup>		
Infringements Issued	0	0.0%
Compliant Outcome	1	6.7%
Work Order Issued	0	0.0%
<b>PAULS VALLEY</b>		
Total Inspections	20	
Inaccessible	1	5.0%
Over 5000m <sup>2</sup>		
Infringements Issued	0	0.0%
Compliant Outcome	18	90.0%
Work Order Issued	1	5.0%
Under 5000m <sup>2</sup>		
Infringements Issued	0	0.0%
Compliant Outcome	0	0.0%
Work Order Issued	0	0.0%

	Number	Percentage
<b>PICKERING BROOK</b>		
Total Inspections	232	
Inaccessible	4	1.7%
Over 5000m <sup>2</sup>		
Infringements Issued	0	0.0%
Compliant Outcome	142	61.2%
Work Order Issued	8	3.5%
Under 5000m <sup>2</sup>		
Infringements Issued	0	0.0%
Compliant Outcome	77	33.2%
Work Order Issued	1	0.4%
<b>PIESSE BROOK</b>		
Total Inspections	86	
Inaccessible	2	2.3%
Over 5000m <sup>2</sup>		
Infringements Issues	0	0.0%
Compliant Outcome	62	72.1%
Work Order Issued	24	27.9%
Under 5000m <sup>2</sup>		
Infringements Issued	0	0.0%
Compliant Outcome	6	7.0%
Work Order Issued	2	2.3%
<b>WALLISTON</b>		
Total Inspections	15	
Inaccessible	0	0.0%
Over 5000m <sup>2</sup>		
Infringements Issued	0	0.0%
Compliant Outcome	6	40.0%
Work Order Issued	2	13.3%
Under 5000m <sup>2</sup>		
Infringements Issued	0	0.0%
Compliant Outcome	7	46.7%
Work Order Issued	0	0.0%
<b>CANNING MILLS</b>		
Total Inspections	9	
Inaccessible	0	0.0%
Over 5000m <sup>2</sup>		
Infringements Issued	0	0.0%
Compliant Outcome	9	100.0%
Work Order Issued	0	0.0%
Under 5000m <sup>2</sup>		
Infringements Issued	0	0.0%
Compliant Outcome	1	11.1%
Work Order Issued	0	0.0%

## Breakdown by Zone and Suburb

### Foothills

	Number	Percentage
<b>HIGH WYCOMBE</b>		
Total Inspections	415	
Inaccessible	1	0.2%
<b>Over 5000m<sup>2</sup></b>		
Infringements Issued	5	1.2%
Compliant Outcome	48	11.6%
Work Order Issued	13	3.1%
<b>Under 5000m<sup>2</sup></b>		
Infringements Issued	3	0.7%
Compliant Outcome	338	81.4%
Work Order Issued	7	1.7%
<b>FORRESTFIELD</b>		
Total Inspections	238	
Inaccessible	5	2.1%
<b>Over 5000m<sup>2</sup></b>		
Infringements Issues	2	0.8%
Compliant Outcome	126	52.9%
Work Order Issued	12	5.0%
<b>Under 5000m<sup>2</sup></b>		
Infringements Issued	4	1.7%
Compliant Outcome	112	47.1%
Work Order Issued	18	7.6%

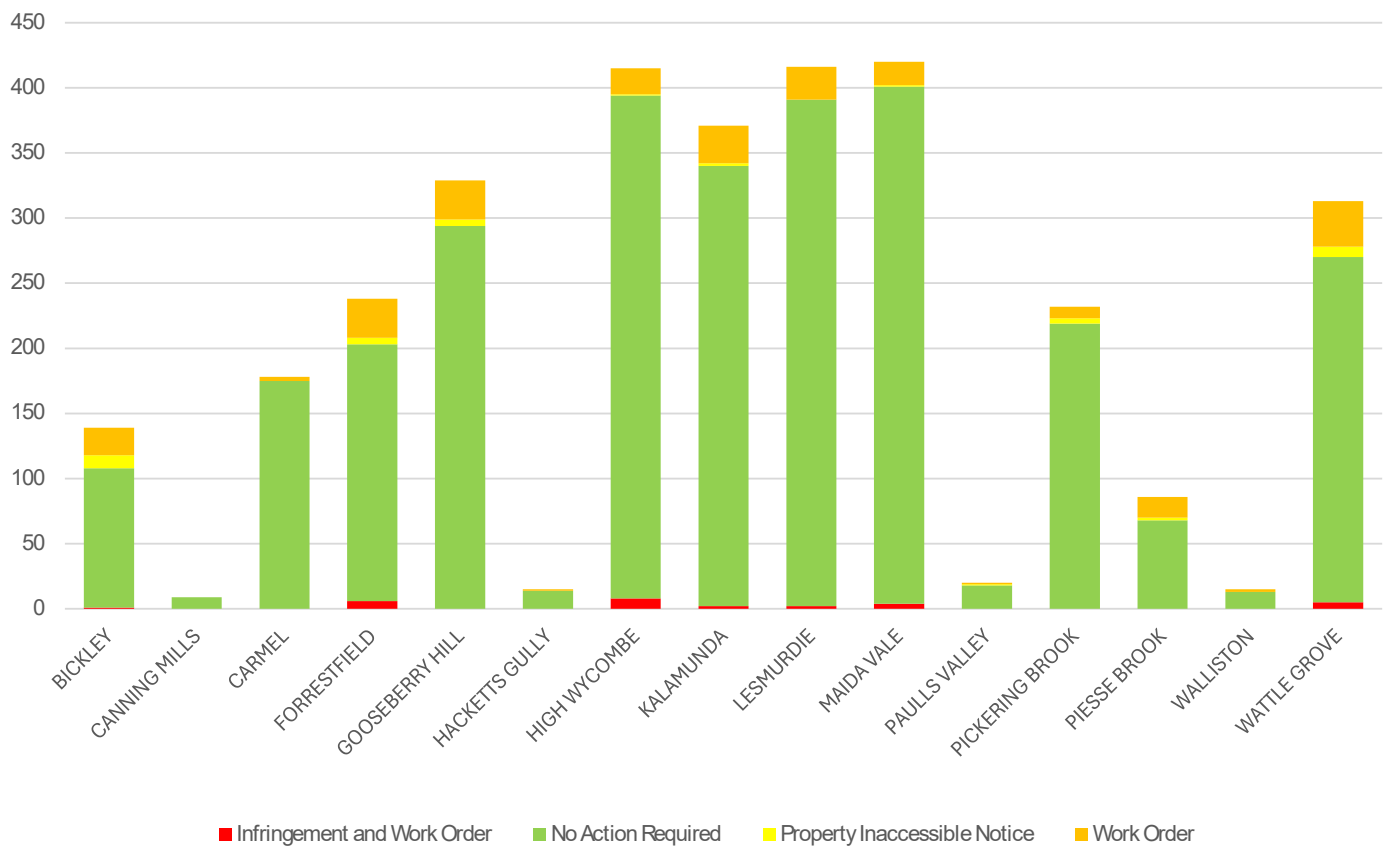
	Number	Percentage
<b>MAIDA VALE</b>		
Total Inspections	420	
Inaccessible	1	0.2%
<b>Over 5000m<sup>2</sup></b>		
Infringements Issued	2	0.5%
Compliant Outcome	179	42.6%
Work Order Issued	13	3.1%
<b>Under 5000m<sup>2</sup></b>		
Infringements Issued	2	0.5%
Compliant Outcome	218	51.9%
Work Order Issued	5	1.2%
<b>WATTLE GROVE</b>		
Total Inspections	313	
Inaccessible	8	2.6%
<b>Over 5000m<sup>2</sup></b>		
Infringements Issues	4	1.3%
Compliant Outcome	199	63.6%
Work Order Issued	30	9.6%
<b>Under 5000m<sup>2</sup></b>		
Infringements Issued	1	0.3%
Compliant Outcome	66	21.1%
Work Order Issued	5	1.6%

### Escarpment

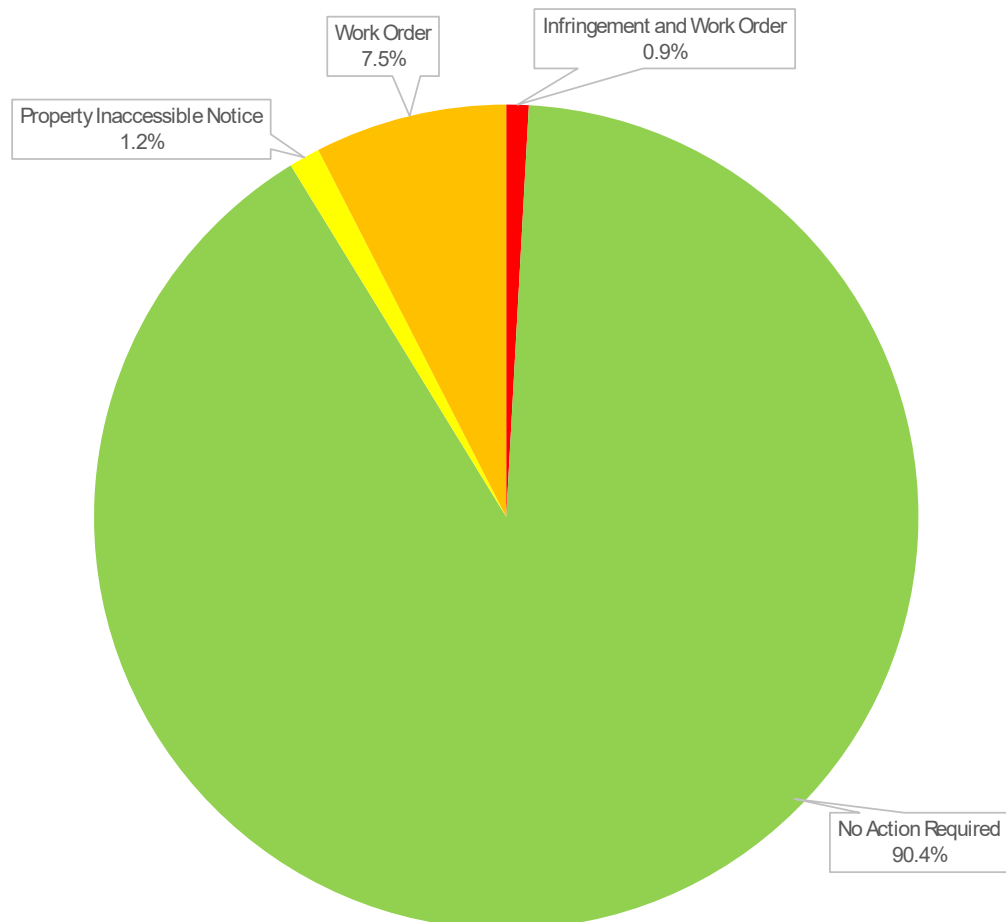
	Number	Percentage
<b>LESMURDIE</b>		
Total Inspections	416	
Inaccessible	0	0.0%
<b>Over 5000m<sup>2</sup></b>		
Infringements Issued	0	0.0%
Compliant Outcome	26	6.3%
Work Order Issued	2	0.5%
<b>Under 5000m<sup>2</sup></b>		
Infringements Issued	2	0.5%
Compliant Outcome	363	87.3%
Work Order Issued	23	5.5%
<b>GOOSEBERRY HILL</b>		
Total Inspections	329	
Inaccessible	5	1.5%
<b>Over 5000m<sup>2</sup></b>		
Infringements Issues	1	0.3%
Compliant Outcome	84	25.5%
Work Order Issued	15	4.6%
<b>Under 5000m<sup>2</sup></b>		
Infringements Issued	0	0.0%
Compliant Outcome	210	63.8%
Work Order Issued	15	4.6%

	Number	Percentage
<b>MAIDA VALE</b>		
Total Inspections	371	
Inaccessible	2	0.5%
<b>Over 5000m<sup>2</sup></b>		
Infringements Issued	0	0.0%
Compliant Outcome	9	2.4%
Work Order Issued	1	0.3%
<b>Under 5000m<sup>2</sup></b>		
Infringements Issued	2	0.5%
Compliant Outcome	329	88.7%
Work Order Issued	28	7.5%

**Figure 6: Assessments by Suburbs**



**Figure 7: Outcome of All Assessment**



## Preseason Engagement

The City continued to focus on proactive bushfire preparedness through a range of community engagement and education initiatives delivered prior to the commencement of the Fire Hazard Reduction Notice compliance period.

Community Bushfire Preparedness Officers attended 14 community engagement events throughout the season, including the Kalamunda Garden Festival, Kalamunda Night Markets, Kalamunda Show, Bushfire Ready Group Street Meets and After the Fire: Community Check-in events. These activities provided opportunities for residents to discuss bushfire preparedness, understand their obligations under the Fire Hazard Reduction Notice and access bushfire safety resources, including information booklets and educational material.

In addition to community engagement activities, Officers offered free pre-season residential property walkthroughs to assist landowners in identifying and addressing potential fire hazards before the compliance period commenced. During the lead-up to the bushfire compliance season, Officers conducted 28 private residential property walkthroughs, providing property-specific advice and guidance on meeting the requirements of the Fire Hazard Reduction Notice.

Of the 28 properties that received a pre-season walkthrough:

- 15 properties were assessed during the compliance period;
- 14 properties were compliant at their first fire hazard assessment;
- 1 property received enforcement action following subsequent inspections; and
- 1 property was inaccessible during the initial assessment.

These initiatives form part of the City's broader commitment to supporting landowners through education and engagement, with an emphasis on achieving voluntary compliance before enforcement measures become necessary.

## Fire Hazard Reduction Notice

The Fire Hazard Reduction Notice (the Notice) is gazetted in the State Government Gazette and posted with the rates notice each year. The notice is available on the City's website, City libraries and published in the local newspaper. City officers also leave a copy of the Notice in a door hanger if they attend a property and no one is onsite at the time of inspection.

Chart 6: 2025/2026 Fire Hazard Reduction Notice



# FIRST AND FINAL NOTICE

COMPLIANCE DUE BY: 1 NOVEMBER 2025

## FIRE HAZARD REDUCTION NOTICE 2025/2026

**Important:** The works outlined below must be completed by 1 November 2025 and maintained in this state up to and including 31 March 2026.

### NOTICE TO ALL OWNERS AND OCCUPIERS OF LAND WITHIN THE CITY OF KALAMUNDA

Pursuant to Section 33 of the *Bush Fires Act 1954 (WA)*, the City of Kalamunda (City) gives written notice to act as specified in this notice to land that you own and/or occupy and with respect to any matter which is upon the land that you own and/or occupy within the City. Failure to comply with this notice is an offence and can result in a penalty of up to \$5,000. The City's Authorised Officers are authorised under the *Bush Fires Act 1954 (WA)* (Act) and have powers to enter land pursuant to Section 14 of the Act. The City advises that its officers, servants, workmen, contractors, vehicles, machinery, and appliances (as the officers deem fit) may carry out the requisitions of this notice that are not complied with by 1 November 2025, and any costs and expenses incurred may be recovered from you as the owner and/or occupier of the land.

#### ALL LAND WITH A TOTAL AREA OF 5,000m<sup>2</sup> OR MORE

##### ❑ FIRE BREAKS

Fire Breaks are to be installed or upgraded to:

- » 3-metre-wide,
- » 4-metre-high clearance,
- » Continuous (no dead ends) and trafficable as close as possible inside the entire perimeter of the land.

##### ❑ DEAD FLAMMABLE MATERIAL (DFM)

Reduce and/or maintain all dead flammable material below 8 tonne per hectare (see definition FUEL LOAD).

##### ❑ SLASHING

- » If the land is an area above 5,000m<sup>2</sup> and less than 50,000m<sup>2</sup> slash mow or trim unmanaged grasses or dead grasses/weeds and dead shrubs and plants to a height of 50mm. This is additional to Firebreak requirements.
- » If the land is an area of 50,000m<sup>2</sup> (5 hectares) or greater the grass must be maintained on the land to a height no greater than 50mm for a distance of 10 meters from any firebreak.

#### ALL LAND WITH A TOTAL AREA LESS THAN 5,000m<sup>2</sup>

##### ❑ DEAD FLAMMABLE MATERIAL

Reduce and/or maintain all dead flammable material below 8 tonne per hectare (see definition FUEL LOAD).

##### ❑ SLASHING

Slash, mow, or trim unmanaged grasses or dead grasses/weeds, dead shrubs, and dead plants to a height no greater than 50mm.

#### ALL PROPERTIES - ASSET PROTECTION ZONE (APZ)

Maintain a reduced fuel zone around all buildings or assets which extends 20 metres from the outermost point of the building or asset.

- » Gutters, roofs, and walls of all buildings to be free of flammable matter and maintained.
- » Fuel load within the 20-metre zone is reduced and maintained to no more than 2 tonne per hectare.
- » Trees over 5 metres in height within the 20-metre zone to be under pruned up to 2 metres.
- » Trees or shrubs within 2 metres of the asset shall be pruned to a height no greater than 2 metres and/or pruned away from the asset to a distance greater than 2 metres.

### VARIATION TO THE FIRE HAZARD REDUCTION NOTICE

If you consider it impractical to meet a requirement/s of this Notice, you may apply to the City for a variation **no later than 1 October 2025**.

**Note:** A variation is not an exemption but an application to employ alternative methods of property preparedness to land that you own and/or occupy.

**An administration fee of \$150 applies for applications received after 1 October 2025.**

If your application is not granted you must comply with all requirements outlined in the Fire Hazard Reduction Notice 2025/2026.

Variation request application forms are available before 1 October 2025 on the City's website at:

[www.kalamunda.wa.gov.au/fire](http://www.kalamunda.wa.gov.au/fire)

If you require any further information, please, visit [kalamunda.wa.gov.au/fire](http://kalamunda.wa.gov.au/fire), call **9257 9999** or email [enquiries@kalamunda.wa.gov.au](mailto:enquiries@kalamunda.wa.gov.au)

### ADDITIONAL WORKS

You may be required to carry out further bushfire property preparedness works on your land to reduce any fire hazards considered necessary by an Authorised Officer. If required, these will be outlined in a 'work order' and sent to the address of the owner and/or occupier.

### EMERGENCY MANAGEMENT PLANS AND CITY APPROVED TREATMENT PLANS

All properties and/or land subject to a Bushfire Management Plan, Emergency Management Plan, or an approved Bushfire Attack Level assessment (BAL), as a result of subdivision, development application or a City approved treatment plan, must comply with the listed requirements in their entirety. **Compliance with any additional plans does not constitute compliance with this Notice.**

### ENVIRONMENTAL AND HERITAGE CONDITIONS

Any property subject to environmental and heritage value such as, but not limited to, Threatened Ecological Communities (TEC), Bush Forever sites, Declared Rare Flora, and Fauna (DRF) sites and Aboriginal Heritage sites should seek further information about what can or cannot be done prior to carrying out requirements under this Notice.

### Low Threat Minimal Fuel Vegetation

Minimal fuel condition means there is insufficient fuel available to significantly increase the severity of the bushfire attack. Low threat vegetation includes grassland managed in a minimal fuel condition, maintained lawns, golf courses, maintained public reserves and parklands, vineyards, orchards, cultivated gardens, commercial nurseries, nature strips and windbreaks. Properties of these description will still be assessed under this Notice and can apply for a variation.

## DEFINITIONS

**FIRE BREAK:** A strip of land free of all flammable and combustible material with the intention of preventing the outbreak of a bush fire and provides visible safe access on the property for emergency vehicles and other firefighting operations. It is acceptable to install a firebreak around naturally occurring obstacles. Fire breaks may be constructed by one or more of the following methods: chemical spraying, scarifying, ploughing, raking, cultivating, or another method as approved by an Authorised Officer.

- » Clearance must be no less than 3-metres wide and 4-metres in height inside and along all boundaries (including boundaries adjacent to roads, rail and drain reserves and all public open space reserves).
- » Must not be more than 4-metres wide (further width extensions may be considered upon written application for approval to the City). Maintained, reticulated living lawns are lawns considered to be kept completely green. Driveways may be acceptable in conjunction with, or in lieu of, fire breaks. Contact a City Authorised Officer for further assistance.
- » Must have a corner turning radius of up to 10 metres.
- » Must be a continuous trafficable surface for a 4WD vehicle, be clear of any obstructions and must not terminate in a dead end.

**FUEL LOAD:** Can be live and dead vegetation that accumulates over time. This Notice refers only to dead vegetation.

**Fine fuels include** = leaf litter, grasses, weeds, twigs (up to 6mm diameter), bark etc.

**Heavy (course) fuels include** = branches, logs, stumps etc.

A fuel load depth of 15mm (fine fuels) to the mineral earth is indicative of approximately 8 tonne per hectare. The more fuel load, the higher the flame height and increased fire intensity.

Mulch piles, stored firewood and burn piles can contribute to fuel loading on land and must be stored safely away from assets, removed from the property, or actioned as directed by an Authorised Officer.

**Anthony Vuleta**  
CHIEF EXECUTIVE OFFICER

[kalamunda.wa.gov.au](http://kalamunda.wa.gov.au)

T 9257 9999 F 9293 2715 E [enquiries@kalamunda.wa.gov.au](mailto:enquiries@kalamunda.wa.gov.au)

2 Railway Road KALAMUNDA WA 6076 PO Box 42, KALAMUNDA WA 6926

ABN 60 741 095 678

## Measure of Achievement

Overall, a high level of compliance was observed across all properties assessed during the season. Compliance rates have remained consistently strong year-on-year, reaching 90.4% by the conclusion of the season. This outcome reflects the significant efforts undertaken by officers during the pre-season, including participation in community engagement events and the delivery of private property walkthroughs, which have contributed to improved awareness and understanding of bushfire mitigation responsibilities among landowners.

The successful implementation of the five-year Fire Hazard Assessment Plan demonstrates the City's commitment to the systematic identification, assessment, and mitigation of bushfire risks on privately owned land. This program has been instrumental in strengthening the City's overall bushfire preparedness and in fostering a safer environment for residents.

Through the ongoing delivery of regular bushfire assessments, the City has proactively identified potential fire hazards and ensured that landowners are informed of their obligations to manage fuel loads and mitigate risk on their properties. Improved compliance outcomes, supported by a balanced approach encompassing education, community engagement, and enforcement, highlight the effectiveness of the program. Where required, the issuance of work orders for non-compliant properties has reinforced the City's proactive and consistent regulatory approach, ensuring that necessary hazard reduction works are completed within required timeframes.

The City will continue to prioritise education and preparedness initiatives as a key component of its community engagement strategy. By promoting awareness and encouraging responsible fire management practices, the City aims to empower residents with the knowledge and tools necessary to effectively reduce bushfire risk.

The success of these initiatives will be measured through key performance indicators, including increased community awareness, higher levels of participation in bushfire preparedness programs, and demonstrates changes in behaviour relating to fire safety practices.

In addition to individual property preparedness, the City's approach emphasises collaboration with key stakeholders, including local emergency services, landowners, and community groups. Strengthening partnerships and promoting open communication will support a coordinated and effective response to bushfire risk.

Ultimately, success will be reflected in the City's ability to proactively manage bushfire hazards, enhance community resilience, and maintain high levels of compliance with fire safety standards. These ongoing efforts contribute to reducing the potential risk and impact of bushfires on community, built, economic and natural environment, supporting a safer and more fire-resilient City.