

# DOG PARKS

## Enclosed Dog Parks & Off-Lead Exercise Areas

Needs assessment  
September 2025



# Contents

## 3 | Dog Park

Introduction .....3

Dog ownership rates .....4

Benefits of dog parks .....4

Demographics and community profile .....5

## 6 | Current Delivery

Enclosed dog parks .....6

Off-lead dog excercises .....7

## 8 | Case Studies

Elmore Way Reserve Dog Park, High Wycombe .....9

The Hales Dog Park, Forrestfield .....10

The Promenade Dog Park, Wattle Grove .....11

## 12 | Trends

## 13 | Previous Community Engagement

## 14 | Benchmarking and Provision

Benchmark Populations Standards: Enclosed Dog Parks .....14

Dog exercise areas off-lead .....16

Catchment mapping.....17

## 21 | The Future

Standards provision.....23

## 24 | Strategic Directions

Enclosed dog parks.....24

Dog exercise areas.....24

## 25 | Recommendations

Reference list.....26







# Introduction

Enclosed Dog Parks are designated areas for dogs and their owners and are supported by a network of off-leash dog exercise areas. Off-leash dog exercise areas are gazetted areas where dogs can exercise however are not fenced.

Enclosed Dog Parks are fenced or enclosed areas that provide amenities for dogs to exercise, play, and socialise off-lead in a safe and controlled environment. These spaces are located within gazetted dog exercise areas supporting responsible pet ownership and contributing to the physical and mental wellbeing of both dogs and their owners.

According to Animal Medicines Australia, dogs are present in 48% of Australian households, amounting to an estimated 6.4 million pet dogs across the country. In Western Australia, dog ownership is even higher, with over 55% of households owning a dog (Pet Census 2024).

In the City of Kalamunda (the City) approximately 50% of households own a dog with registrations totalling 9,549 in 2025, equating to 1 dog for every 6 residents.

## Dog ownership rates

Over the last four years dog registrations within the City have averaged 9,017. In 2025, the City has a total of 9,549 registered dogs distributed across the below suburbs.

Suburb	No. of Dogs Registered	Suburb	No. of Dogs Registered
Forrestfield	1,934	Bickley	160
High Wycombe	1,803	Carmel	134
Lesmurdie	1,579	Pickering Brook	111
Kalamunda	1,341	Piesse Brook	41
Maida Vale	854	Paulls Valley	32
Gooseberry Hill	675	Hacketts Gully	11
Wattle Grove	603	Canning Mills	1
Walliston	190	Other	80
<b>Total: 9,549</b>			

In summary, 54% of dogs are located in the foothills, 40% located in the hills suburbs and 6% in the rural areas.

## Benefits of Dog Parks

Dog Parks promote positive impacts to the community's health and wellbeing by:

- Promoting positive impacts on health and wellbeing.
- Increasing physical activity for both dogs and owners.
- Enhancing community connection through shared use of public space.
- Supporting socialisation and behavioural development in dogs.
- Reducing nuisance behaviours such as excessive barking and aggression.
- Adding value to the open space network as multi-use and community-centred infrastructure.
- Reducing concerns of members of the community who are uncomfortable around dogs, by providing a dedicated fenced space.

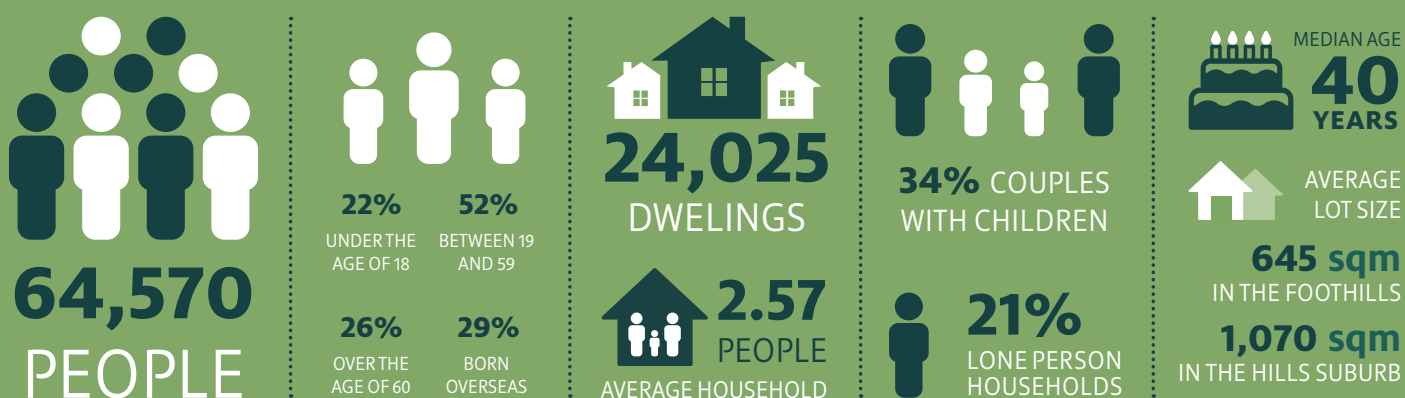
It's no surprise that 85% of dog owners report a positive impact on their lives, from owning a dog (Animal Medicines Australia, 2022).

## Demographics and community profile

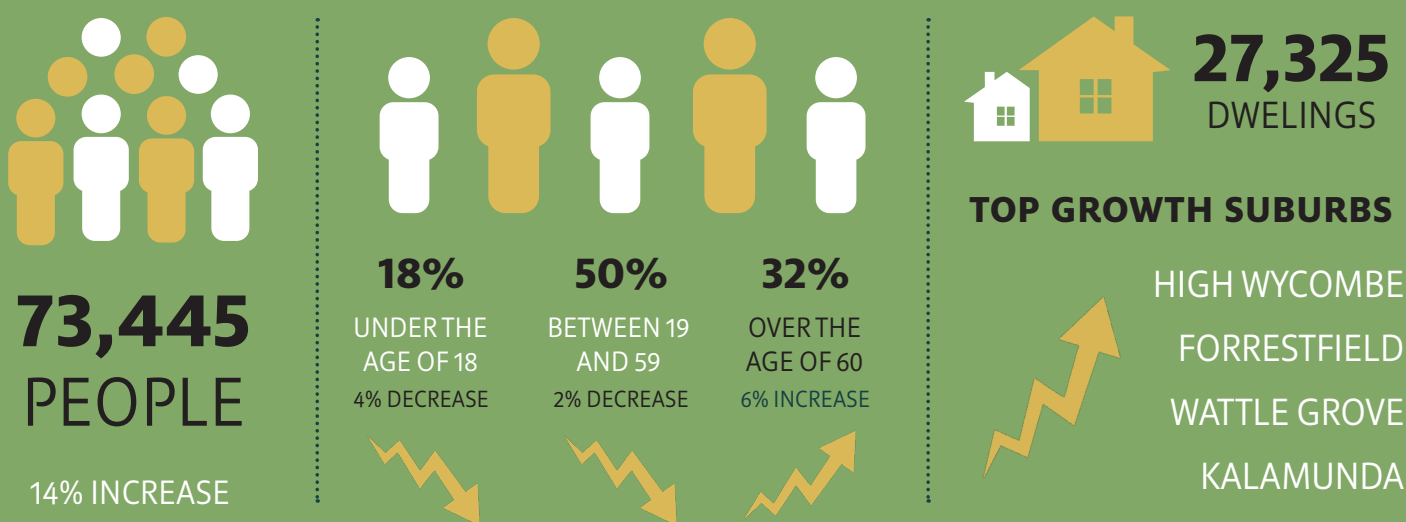
The City has a diverse community spread across a mix of urban, peri-urban, rural and State Forest areas creating unique population profiles in each area, that influence community infrastructure need and delivery. The City is spread across 324 square kilometres, with population density ranging from a low of 13 persons per square kilometre in The Eastern Rural Districts to a high of 1,170 persons per square kilometre in High Wycombe.

Using population forecasting tool id.forecast the City is able to understand the current and forecast demographics to guide community infrastructure planning.

### Kalamunda Today - 2025



### Kalamunda Future - 2046



# Current Delivery

The City maintains a network of dog exercise areas and provides three enclosed dog parks. The enclosed dog parks have historically been developed in response to community demand and as part of larger public open space upgrades.

## Enclosed dog parks

Facility	Hierarchy	Strengths	Weaknesses
Elmore Way Reserve - Dog Park, High Wycombe Built: 2021	District Enclosed Area Size: 0.51 ha	<ul style="list-style-type: none"> <li>Dual dog zones (small and large)</li> <li>Toilets close by, seating, water fountains, bins</li> <li>BBQs close by footpaths</li> <li>Dog agility equipment</li> <li>Double gate entry systems</li> <li>Shade</li> <li>Co-located with playground and local shopping centre</li> <li>Car parking</li> </ul>	<ul style="list-style-type: none"> <li>No CCTV</li> </ul>
The Hales Dog Park, Forrestfield Built: 2022	District Enclosed Area Size: 0.68ha	<ul style="list-style-type: none"> <li>Large dual dog zones (small and large) with limited agility equipment</li> <li>Water fountain (small dog area)</li> <li>Double gate entry systems</li> <li>Shade and seating</li> <li>Good access</li> </ul>	<ul style="list-style-type: none"> <li>Limited car parking</li> <li>No CCTV</li> <li>Limited agility equipment</li> </ul>
The Promenade POS, Wattle Grove	Neighbourhood Enclosed Area Size: ~0.4ha	<ul style="list-style-type: none"> <li>Community led and designed</li> <li>Collaborative approach</li> <li>Low cost/sustainable</li> <li>Repurposed fencing and materials</li> <li>Dual dog zones (small and large) with double gate entry system</li> <li>Agility equipment, Water fountain, shade and seating, Bulletin board</li> <li>Adjacent existing car parking</li> </ul>	<ul style="list-style-type: none"> <li>Lighting (stage 2) subject to grant funding being obtained</li> <li>No CCTV</li> </ul>

Note: The community-led enclosed dog park in Wattle Grove is currently being designed and is proposed to be constructed in late 2025. It will be developed using a low-cost, co-design place-making approach, with support from the City.

For further details on the City's dog exercise areas refer to the [City's website](#).

The Perth Hills area is home to many National and Regional Parks, many of which [do not permit dogs](#) (with exception of approved assistance dogs) to protect indigenous fauna and flora and as consideration of the rights of other park users. [Permitted areas for dogs in National and Regional Parks and campgrounds are listed](#) on the Parks and Wildlife Service website.

## Off-lead dog exercise areas

The City has 24 gazetted off leash dog exercise areas. Dogs in these areas must be always supervised by a person capable of controlling their dog, through good recall, voice control and should always have a lead at hand.

Location	Permitted dog exercise area	Dog prohibited areas
Kalamunda	<ul style="list-style-type: none"> <li>Old Railway Reserve: Bordered by Williams, Elizabeth and Tella Streets and Railway Road</li> <li>Old Railway Reserve: Between Collins and Lesmurdie Roads</li> <li>Old Yorna Road Reserve: Corner of Alpine and Bird Roads</li> <li>Hedley Jorgensen Park: Bordered by Spring and Crescent Roads</li> </ul>	<ul style="list-style-type: none"> <li>Stirk Park: Entire Park</li> <li>Kostera Oval: Turf grassed area</li> </ul>
Lesmurdie	<ul style="list-style-type: none"> <li>Flora Terrace Reserve: Bordered by Orangedale Road and Walyunga Street</li> <li>Seaton Park: Bordered by Fletcher and Lesmurdie Roads</li> <li>Hugh Sanderson Reserve: Willingham Drive and Chislehurst Road</li> <li>Ray Owen Reserve: South West corner starting Willoughby and Gladys Roads, designated area only</li> </ul>	<ul style="list-style-type: none"> <li>Ray Owen Reserve: Turf grassed oval</li> </ul>
Forrestfield	<ul style="list-style-type: none"> <li>Reserve: Adjoining and running parallel to Tonkin Hwy west of Hale Road intersection</li> <li>Western Power Easement: Lot 120 Stringybark Drive between Holmes Road and Passiflora Drive</li> <li>Federation Gardens: Hartfield Park, designated area</li> </ul>	<ul style="list-style-type: none"> <li>Hartfield Park: Whole park except the Federation Gardens area</li> <li>Pioneer Park: Turf grassed area</li> </ul>
High Wycombe	<ul style="list-style-type: none"> <li>Elmore Park: Bordered by Elmore Way and Chipping Drive</li> <li>Ollie Worrell Reserve: Bordered by Worrell Avenue and Abernethy Road</li> <li>Progress Park: Bordered by Cyril Road and Bandalong Way</li> <li>MacKenzie Park: Reserve 29104: bordered by Netherwood Road and Albermarle Way</li> </ul>	<ul style="list-style-type: none"> <li>Scott Reserve</li> </ul>
Gooseberry Hill	<ul style="list-style-type: none"> <li>Ledger Road Reserve – Bush Areas: Bordered by Ledger Road, Huntley Street and Longfellow Road</li> <li>The Boulevard Reserve: 18 The Boulevard, Gooseberry Hill</li> </ul>	<ul style="list-style-type: none"> <li>Nil</li> </ul>
Walliston	<ul style="list-style-type: none"> <li>Old Railway Reserve: Lesmurdie Road East to Kennedy Road</li> <li>Western Power Easement: Lot 5 Lawnbrook Road West, bordered by Palmateer Drive from Halleendale Road</li> <li>Alan Anderson Park: Lot 300 Pomeroy Road corner Lawnbrook Road</li> </ul>	<ul style="list-style-type: none"> <li>Nil</li> </ul>
Maida Vale	<ul style="list-style-type: none"> <li>Booralie Way Reserve: Bordered by Booralie Way and Tambulan Road</li> <li>Norwood Reserve: Bordered by Norwood and Hawtin Roads and Hewson Place</li> <li>Western Power Easement: Lot 3, Kalamunda Rd - eastern side of Roe Hwy bordering Maida Vale Road</li> </ul>	<ul style="list-style-type: none"> <li>Maida Vale Reserve: Turf grassed area</li> </ul>
Wattle Grove	<ul style="list-style-type: none"> <li>Reserve: Bordered by Lenihan Corner, St John Road and The Promenade</li> </ul>	<ul style="list-style-type: none"> <li>Nil</li> </ul>





# Case Studies





# Elmore Way Reserve Dog Park, High Wycombe

Elmore Way Reserve Dog Park, High Wycombe, was developed in 2021 as part of an open space improvement plan for Elmore Way Reserve. It is a purpose-built, high-quality facility, with a key feature of the site being that it includes separate areas for both small and large dogs.

Its large and small dog areas, offer diverse agility equipment, shaded seating, accessible paths, and safety-focused fencing make it appealing to a wide range of users. The level of amenity, combined with significant capital investment, positions the park as a popular and well-utilised destination for dog owners across the City.



# The Hales Dog Park, Forrestfield

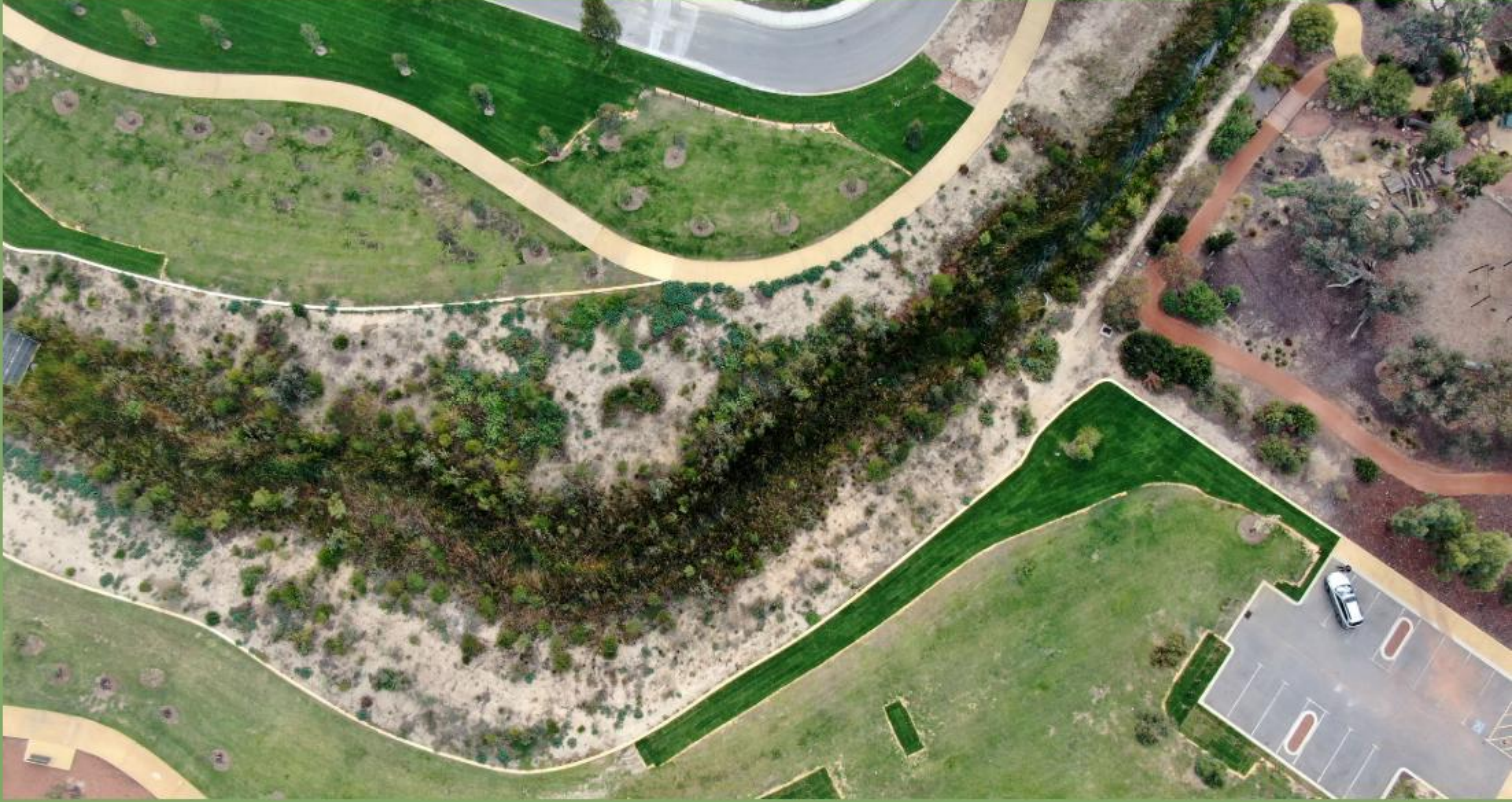
The Hales Dog Park, Forrestfield is located on Crimson Boulevard in Forrestfield. The dog park was developed by property developers, Satterley in June 2020 with ownership now transferred to the City. The dog park offers a welcoming, fully fenced environment where dogs of all sizes can safely socialise and play.

The park is well-designed with separate areas for both large and small dogs, double gate entry points, water fountains, shade, seating, car parking and quality fencing to minimise risks and support positive experiences. The site is also accessible for all with wheelchair access throughout, creating a comfortable and inclusive environment.

The Hales Dog Park is also part of Forrestfield's broader story, a suburb once defined by farmland and rich vegetation now transformed into a thriving community that continues to value and protect green recreational spaces. Parks like The Hales represent this balance between urban growth and natural leisure, offering residents a slice of community life where dogs and people alike can connect.







# The Promenade Dog Park, Wattle Grove

The Promenade Dog Park, Wattle Grove is located off Hale Road and is adjacent to the Wattle Grove Shopping Centre.

The Promenade Dog Park development occurred through a community led petition to the City in March 2025, seeking a new enclosed dog park specifically in Wattle Grove.

The City has facilitated a community-led / low-cost approach to the development of a neighbourhood level Dog Park at the Promenade public open space. This innovative Place Making approach has empowered the community to plan, design and install elements of the Dog Park. It has resulted in the community contributing various equipment, materials and consumables.

The City has provided a new water fountain, repurposed existing fencing, donated various materials and Officer time to this innovative initiative.

This model offers a cost-effective, sustainable, grassroots pathway to improve access to enclosed dog parks while fostering civic pride and ownership.





# Trends

- **Increased Dog Ownership:** The number of registered dogs within the City has increased in recent years, reflecting a national trend of rising pet ownership.
- **Community Demand for Dog-Friendly Spaces:** The City has previously received requests from residents for more dog exercise areas and better-quality off-leash facilities and enclosed dog parks. Community consultation data and anecdotal feedback indicate that residents place strong value on safe, accessible locations where dogs can socialise, exercise, and interact.
- **Shifting Demographics and Lot Sizes:** As the City continues to grow and evolve, areas are seeing an increase in infill development and smaller residential lot sizes, particularly in newer subdivisions and urban fringe locations. This shift reduces private backyard space, thus increasing reliance on public open space for dog exercise and recreation.
- **Social and Health Trends:** Dog parks have become community hubs that encourage activity, support mental health and wellbeing, and promote interactions amongst residents. This reflects a broader societal emphasis on healthy, active lifestyles and connected communities.
- **Urban Planning and Pet-Friendly Design:** Across Perth and other metropolitan areas, local governments are increasingly embedding pet-friendly planning principles into their public open space strategies. Dog parks are now being seen as core community assets, rather than optional add-ons.
- **Enclosed Dog Park Amenities:** Enclosed dog parks are increasing provided with an increased level of amenities including: double-gated entry, shade, drinking facilities, dog bins & bags, educational signage, versatile surfacing, agility features and wheelchair accessibility.
- **Site considerations:** Site considerations for enclosed dog parks including: park popularity, strategically well located, conservation sensitivity, parking/access, complimentary use, and safety concerns (sports fields, playground proximity etc.).

# Previous Community Engagement

In both 2021 and 2023, the City undertook community consultation relating to the Dog Exercise Area Management Plan, which sought feedback on the quality and provision of the City's existing dog exercise areas and enclosed dog parks. The key relevant outcomes from the most recent consultation in 2023 are noted below:

- 83% of respondents felt that there should be more fenced dog exercise areas in the City, particularly in the hills suburbs and within smaller residential lots.
- 68% of respondents felt that the existing off-leash dog exercise areas within the City were not sufficient.
- 37% of respondents felt that the quality of dog parks could be improved.
- 73% of respondents felt that dogs should be allowed on sporting grounds if there is no scheduled sport taking place.
- 73% of respondents felt that dog owners should take more responsibility for their dogs (i.e. clean up after them and dog recall/obedience).





# Benchmarking & Provision

In determining the recommended number of enclosed dog parks within the City, both the benchmark population standards and accessibility / distribution were considered.

## Benchmark Population Standards: Enclosed Dog Parks

Typically Local Government Authorities (LGA's) across Western Australia (WA) use the Parks and Leisure Australia, Western Australia (PLAWA) Community Infrastructure Guidelines (2020) as one assessment tool to guide community infrastructure provision for their communities.

With regard to enclosed dog parks, the guidelines note enclosed dog park provision as a "specialty park", that should be incorporated into District Level Park amenities, however it does not specify an applicable benchmark standard, rather that provision is based on an individual project level assessments.

In the absence of a WA industry benchmark standard, the current provision rate of other LGAs for enclosed dog parks were reviewed as per the table below.





LGA	Population	Population Provision Rate	LGA Provision - No of Enclosed Dog Parks	Key Features
City of Kalamunda	64,573	1:21,524	3 located in: <ul style="list-style-type: none"> <li>Forrestfield</li> <li>High Wycombe</li> <li>Wattle Grove</li> </ul>	<ul style="list-style-type: none"> <li>Dual dog zones and agility equipment</li> <li>Water fountain, shade and seating</li> <li>Car parking</li> </ul>
City of Swan	152,974	1:30,000	5 located in: <ul style="list-style-type: none"> <li>Dayton</li> <li>Aveley</li> <li>Annies Landing dog park</li> <li>Ellenbrook</li> <li>Greenslope dog exercise Park</li> </ul>	<ul style="list-style-type: none"> <li>Dual dog zones and agility equipment</li> <li>Water fountains, shade and seating</li> <li>Accessible design</li> </ul>
City of Gosnells	118,500	1:59,000	2 located in: <ul style="list-style-type: none"> <li>Harmony Fields</li> <li>Bracadale</li> </ul>	<ul style="list-style-type: none"> <li>Dual dog zones and agility equipment</li> <li>Water fountain, shade and seating</li> <li>Car parking</li> <li>Wheelchair access points</li> </ul>
City of Armadale	109,554	1:27,000	4 located in: <ul style="list-style-type: none"> <li>Kelmscott</li> <li>Hilbert</li> <li>Piara Waters</li> <li>Brookdale</li> </ul>	<ul style="list-style-type: none"> <li>Dual dog zones and agility equipment</li> <li>Water fountain, shade and seating</li> <li>Car parking</li> </ul>
City of Belmont	42,257	Nil.	Nil.	Nil.
Shire of Mundaring	39,166	Nil.	Nil.	Nil.
City of Rockingham	154,132	1:38,500	4 located in: <ul style="list-style-type: none"> <li>Port Kennedy</li> <li>Waikiki</li> <li>Baldivis</li> <li>Rockingham</li> </ul>	<ul style="list-style-type: none"> <li>Dual dog zones</li> <li>Agility equipment</li> <li>Water fountain, shade and seating</li> <li>Car parking</li> </ul>
<b>Average:</b>		<b>1:35,458</b>	Note: Shire of Mundaring and City of Belmont not included in average calculations, as no provision rates apply.	

Based on the above review the recommended benchmark standard for providing enclosed dog parks is 1:35,000 (average rate of provision). The review identified that the City of Rockingham also has a planning standard of 1:35,000 per head of population.

This provides a basis for the City to assess its levels of provision for enclosed dog parks, noting the City’s unique profile of population density across urban, peri-urban and rural suburbs.

City of Kalamunda – Benchmark Standard	Current 2024 Population Provision (64,573)	Future 2046 Population Provision (73,445)	Total Shortfall/ Overprovision
1:35,000	Two District Level & One Neighbourhood Level (Community led)	Two District Level & One Neighbourhood Level (Community led)	Overprovisioned now and to 2046 based on benchmark population standards

**Dog exercise areas - Off lead**

Typically LGAs across WA use the State Governments Public Open Space Classification Framework to classify its various Public Open Spaces. The framework provides a guide to the purpose, function, accessibility, size, use and design of Local, Neighbourhood, District and Regional level public open space.

The framework has been assessed to determine an appropriate walkability catchment for off lead dog exercise areas, which identified an appropriate catchment radius of 800m.

# Catchment Mapping

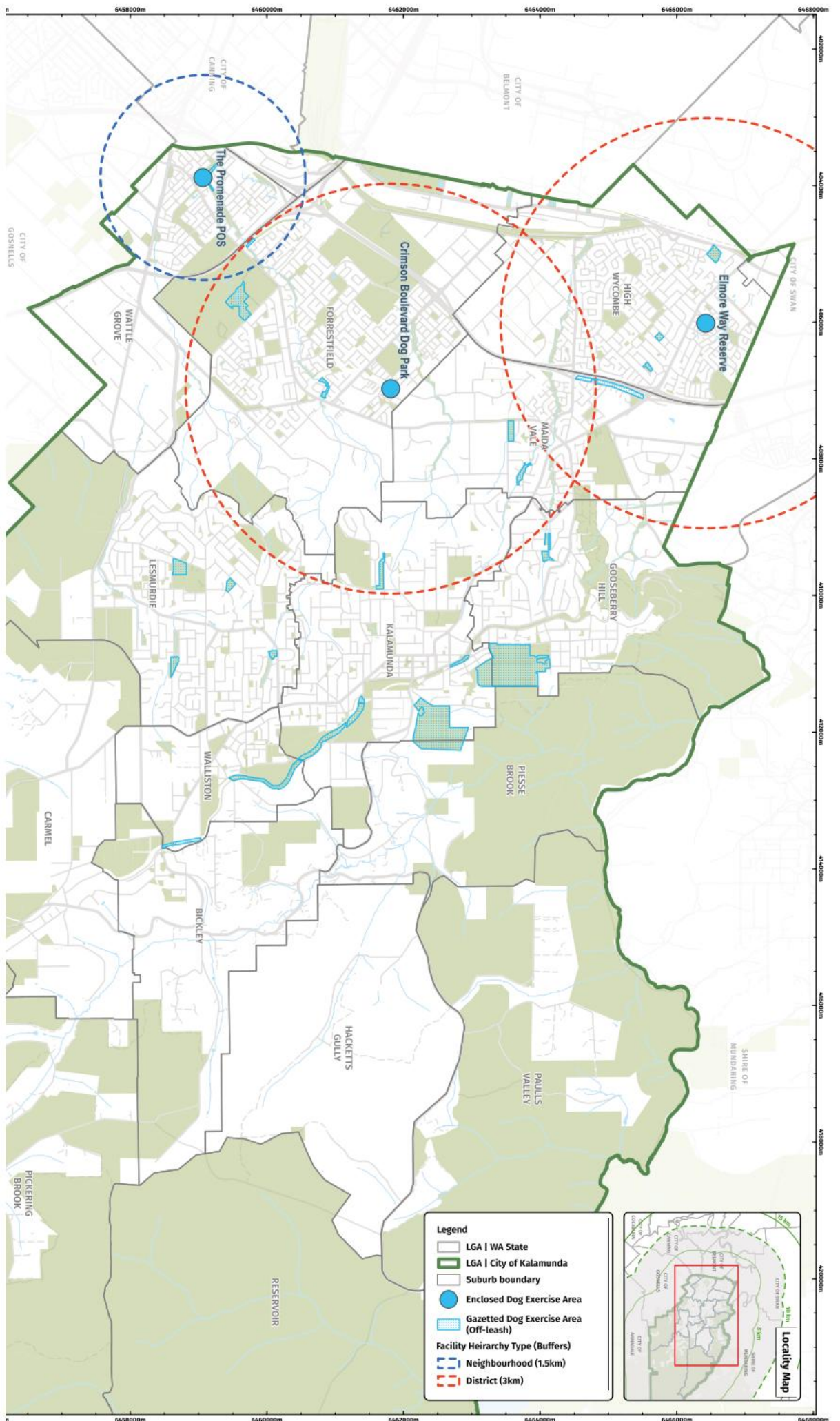
The foothills community residing in smaller residential lots have good access to dog exercise areas, except in Wattle Grove South, a small section of Forrestfield and in High Wycombe South. The small section of reduced access in Forrestfield is attributed to the closure of Pioneer Park. These areas are however all within the catchments of the City's enclosed dog parks, of which the foothills is well serviced.

The hills suburbs, generally have larger residential lots along with excellent access to dog exercise areas and several large walking trails. There is however, a potential distribution and accessibility gap in the provision of enclosed dog parks in the hills suburbs. This is to be addressed through the provision of two community led neighbourhood level dog parks into the future, noting that the City's existing district level enclosed dog parks are generally within a 15 minute drive for the majority of hills residents.

The eastern rural suburbs have limited to no access to dog exercise areas or enclosed dog parks, however they generally reside on large rural lots, with low population density which reduces the need. Should future housing developments occur in the Pickering Brook area then dedicated off lead dog exercise areas may be required depending on the proposed population increase and density levels.





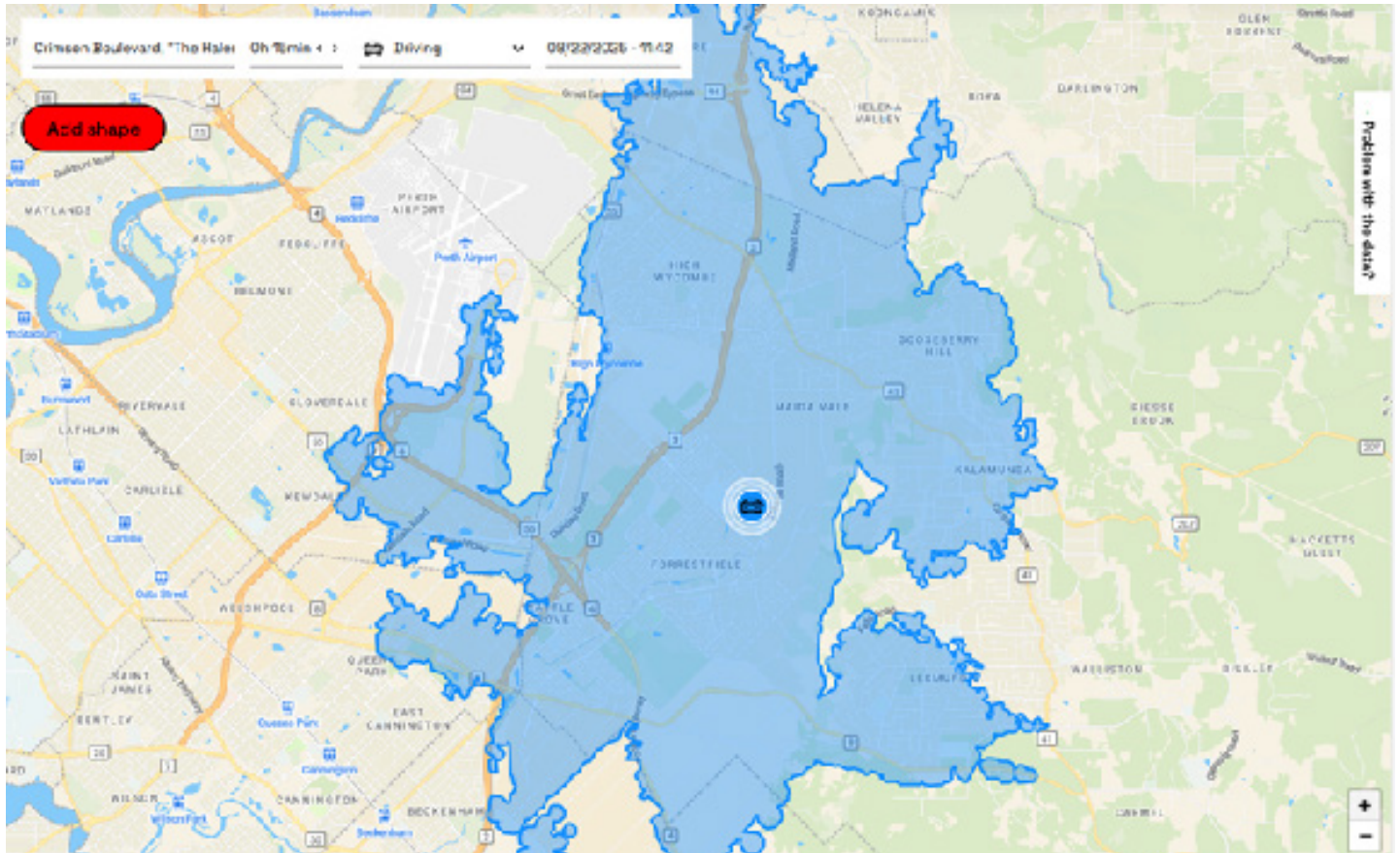


Map 1 (Above): Identifies the City's existing enclosed dog park catchments at a District and Neighbourhood Level

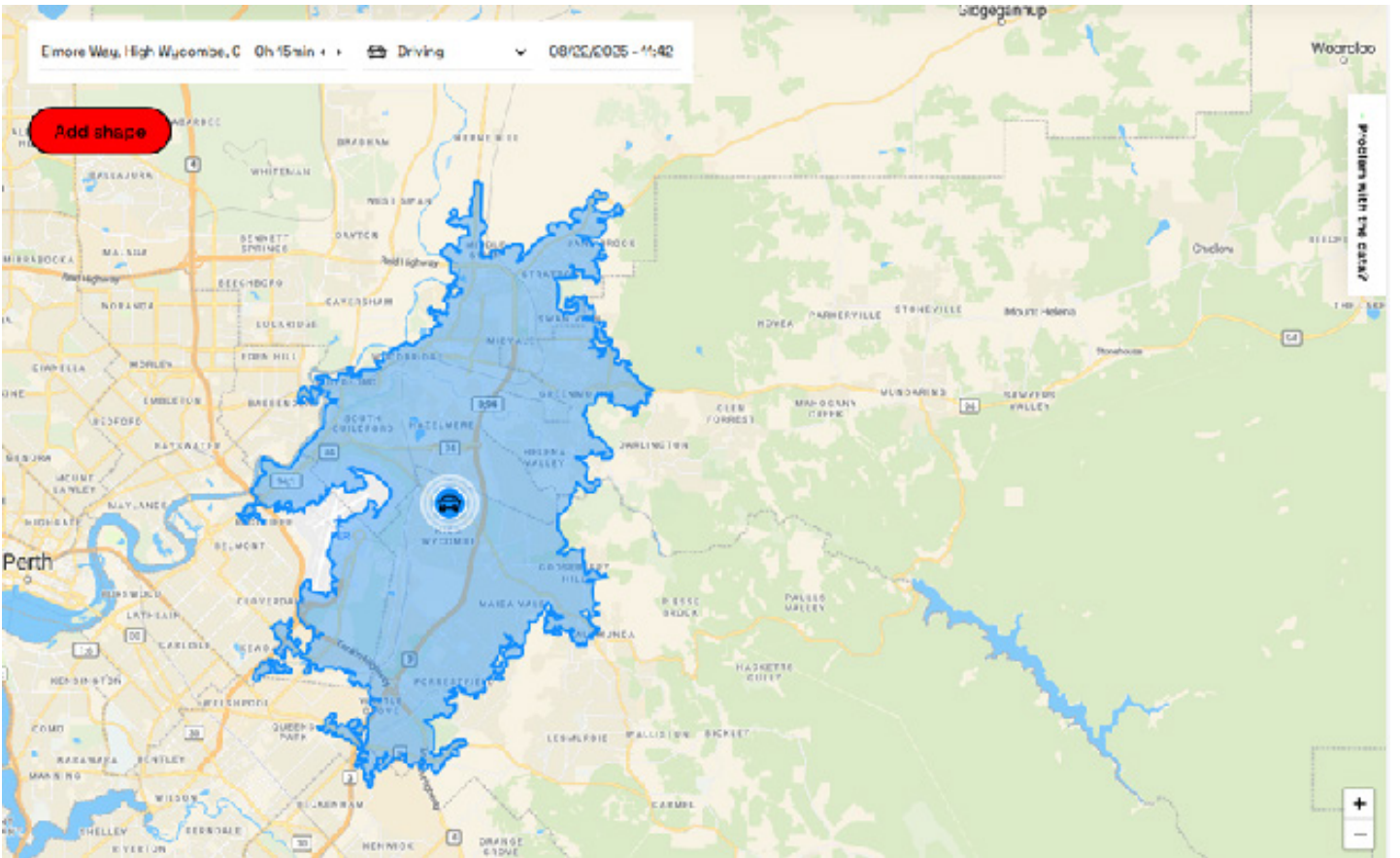


Map 2 (Above): Identifies the City's existing off lead dog exercise areas and enclosed dog parks with an 800m walkable catchment





Map 4: (Above): Crimson Boulevard "The Hales" Dog Park, Forrestfield – Shaded blue area indicates access areas within a 15 minute drive time from the site.



Map 3 (Below): Elmore Way Dog Park, High Wycombe - Shaded blue area indicates access areas within a 15 minute drive time from the site.





# The Future



As the City evolves, our vision is for a well-distributed, accessible network of off-leash dog exercise areas and enclosed dog parks that:

- Recognise enclosed dog parks as important community assets.
- Reflects community need and expectations.
- Reflects affordability and sustainability.
- Support healthy, active lifestyles and social inclusion.
- Maintain safe off-leash dog exercise areas.

Based upon benchmark population standards alone, the City is currently overprovisioned for enclosed dog parks, however on a distribution and accessibility basis the City has an identified provision gap in the hills suburbs (Kalamunda / Lesmurdie).

This gap is to be addressed by developing two neighbourhood level dog parks through a Place Making approach that is low cost and community led. These two developments are to occur on existing gazetted dog exercise areas within Gooseberry Hill / Kalamunda and Lesmurdie / Walliston areas.

The City currently has a well established network of off-lead dog exercise areas across the City. In the future, in line with residential development forecasts, additional off-lead areas are required in High Wycombe South, Wattle Grove south, pockets of Forrestfield and Pickering Brook (pending population thresholds).

## Standards of Provision

The following table provides the standard level of provision for both dog exercise areas and enclosed dog parks across the City. These provision standards have been developed using all relevant guidelines and overlaying the needs of the City community.

Further informing the standards is the City's existing Local Planning Policy no. 32 – Public Open Space, which sets out basic and optional requirements that are provided on park sites, relevant to their hierarchy.

Dog Exercise Area Hierarchy	Catchment / Distance	Type of Dog Exercise Areas	Minimum Requirements
Local	800m catchment 10min walk	Off lead dog exercise areas only	<ul style="list-style-type: none"> <li>• Signage</li> <li>• Bins &amp; bag dispenses</li> </ul>
Neighbourhood – (Community Led)	1.5km catchment 15 min walk 5-10 minute drive	Off lead dog exercise areas & Small scale enclosed dog parks (0.2 – 0.5ha)	<ul style="list-style-type: none"> <li>• Low cost approach</li> <li>• Fenced/Enclosed area</li> <li>• Benches/seating</li> <li>• Water fountain</li> <li>• Bins &amp; bag dispenses</li> <li>• Signage</li> </ul>
District	3km catchment 30 min Walk 15 minute drive	Off lead dog exercise areas & Medium scale enclosed dog parks (0.5ha to 1ha)	<ul style="list-style-type: none"> <li>• Fenced/Enclosed area</li> <li>• Dual dog areas</li> <li>• Dual lock gates/entry</li> <li>• Agility equipment</li> <li>• Benches/seating</li> <li>• Water fountain</li> <li>• Bins &amp; bag dispenses</li> <li>• Signage,</li> <li>• Accessible pathways,</li> <li>• Car parking,</li> </ul>
Regional	Regional level provision is considered beyond the City's capacity and responsibility to provide, therefore provision should be focused at a Neighbourhood and District level.		

Note: Neighbourhood Level amenities should be located at Neighbourhood Level – Category A park sites or above, as they are strategically well located, offer increased service to the community, provide co-location opportunities and suitable for an increased level of amenity. Refer to Local Planning Policy 32 – POS for further information.



# Strategic Directions

## Enclosed Dog Parks

- The City has sufficient district level dog parks to meet current and future population projections through 2046.
- The City has a distribution and accessibility gap for access to enclosed dog parks at a Neighbourhood level in the hills suburbs.

## Dog Exercise Areas

There is a gap in the City's provision of dog exercise areas in:

- High Wycombe south;
- Wattle Grove south;
- Sections of Forrestfield; and
- Pickering Brook (Pending population thresholds).





# Recommendations

- 1. Adopt the standards of provision to guide any future development.**
- 2. The City engages with interested community leaders / parties to investigate and plan the development of two new neighbourhood level enclosed dog parks at existing gazetted sites within:**
  - Kalamunda / Gooseberry Hill by 2026/27
  - Lesmurdie / Walliston by 2030/31
- 3. The City conduct location assessments to identify future off-lead dog exercise areas to inform strategic land use planning within the areas of:**
  - High Wycombe south
  - Wattle Grove south
  - Sections of Forrestfield
  - Pickering Brook (Pending population thresholds)

## Reference List

Below is a list of key documents that have informed the City's assessment into enclosed dog parks and dog exercise areas.

Document Title	Owner	Relevance:
<a href="#">Classification Framework for Public Open Space</a>	State Government – Department of Creative Industries, Tourism and Sport	Provides guidance on classifying public open space
<a href="#">PLA WA – Guidelines for Community Infrastructure</a>	Parks & Leisure Australia	Provides guidance on enclosed dog park provisions
<a href="#">Community Infrastructure Plan – 2024-25</a>	City of Rockingham	Provides guidance on enclosed dog park provisions
Pet-Friendly Cities Toolkit	Nil.	Used to highlight links between pet ownership, community health, and access to parks. Helpful in strategic planning and advocacy.
<a href="#">Unleashed a guide to successful dog parks</a>	Government of South Australia, Dog & Cat Management Board	Provides guidance on dog park design including signage and provides advice on responsible dog behaviour. Commonly used in WA dog park planning.







2 Railway Road, Kalamunda WA 6076  
PO Box 42, Kalamunda WA 6926  
**T** 9257 9999  
**E** [enquiries@kalamunda.wa.gov.au](mailto:enquiries@kalamunda.wa.gov.au)  
**kalamunda.wa.gov.au**