

30 Henry St Fremantle Western Australia 6160  
mail@armstrongcollective.com.au | 9433 1388

This drawing is copyright and shall always remain the property of ARMSTRONG COLLECTIVE PTY LTD and must not be used in any manner without the prior written approval of that company

**Proposed Copper & Oak Liquor Warehouse**

Lot 15, 10 Canning Road, Kalamunda

**Site Plan & Floor Plan**

As indicated At A1

**SK1.01** REV **F**

30.10.24

KALA\_24

ARMSTRONG COLLECTIVE



CANNING RD ELEVATION 1:100 (SK1.01)

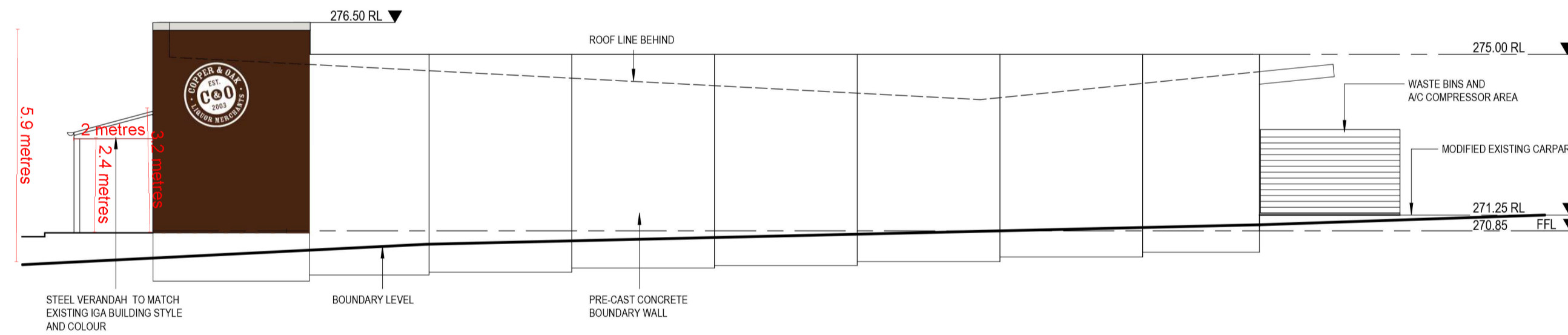
70.4 metres<sup>2</sup>



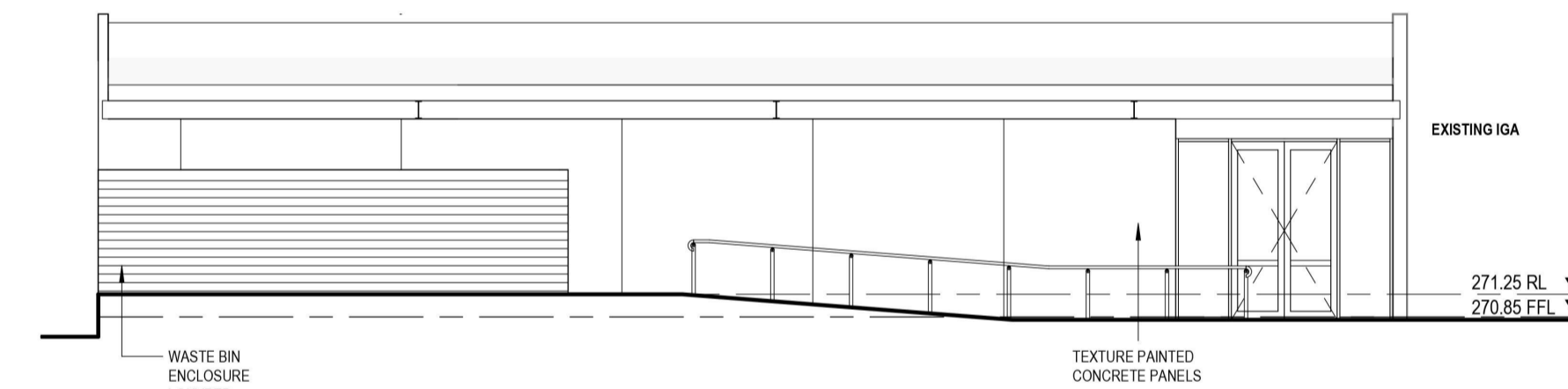
CANNING RD ELEVATION 1:100 (SK1.01)

9 metres<sup>2</sup>  
 9.7 metres<sup>2</sup>  
 67.3 metres<sup>2</sup>  
 10.9 metres<sup>2</sup>  
 9.5 metres<sup>2</sup>

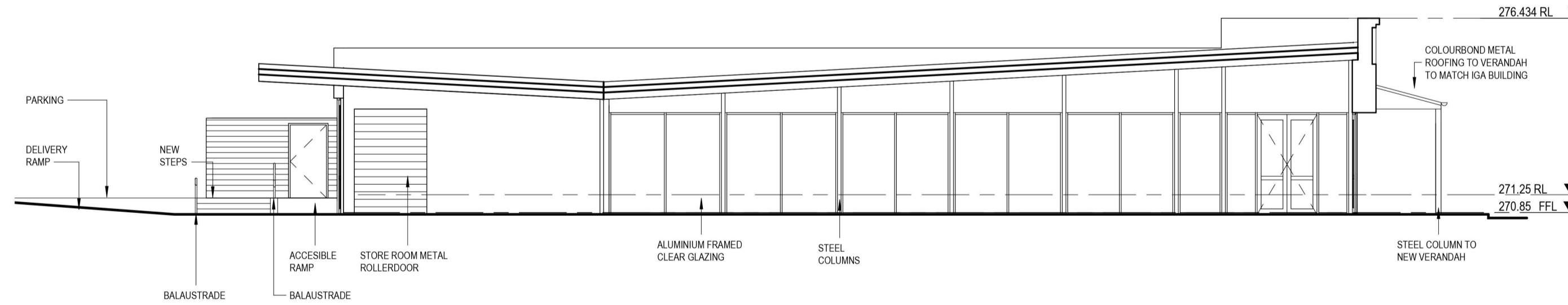
9.4 metres<sup>2</sup>  
 10.6 metres<sup>2</sup>  
 8.6 metres<sup>2</sup>



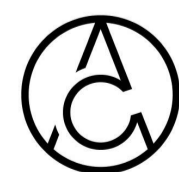
ELEVATION 2 1:100 (SK1.01)



ELEVATION 3 1:100 (SK1.01)



ELEVATION 4 1:100 (SK1.01)



30 Henry St Fremantle Western Australia 6160  
 mail@armstrongcollective.com.au | 9433 1388

This drawing is copyright and shall always remain the property of ARMSTRONG COLLECTIVE PTY LTD and must not be used in any manner without the prior written approval of that company

### Proposed Copper & Oak Liquor Warehouse

Lot 15, 10 Canning Road, Kalamunda

Elevations

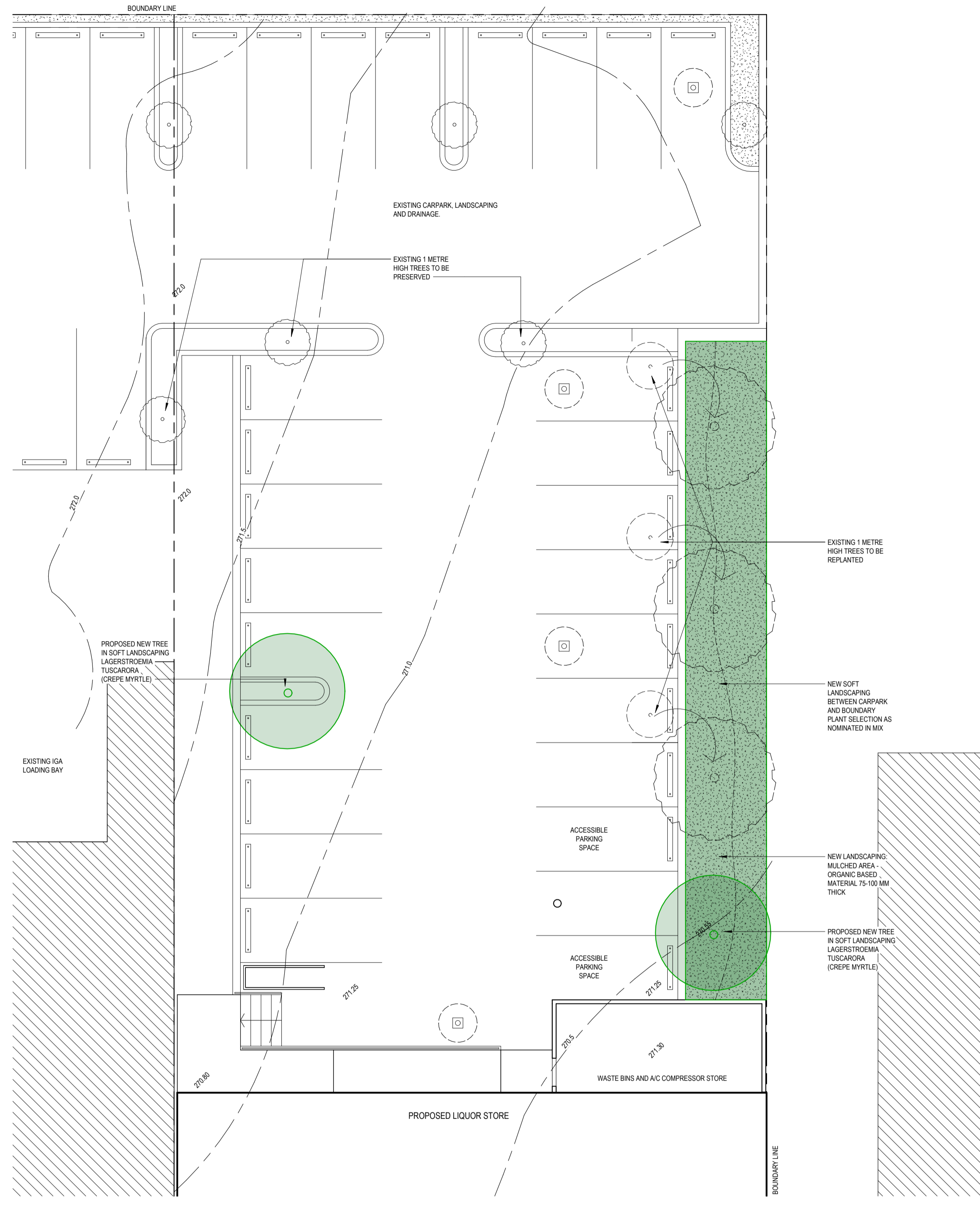
SK1.02 REV E

1 : 100 At A1

29.10.24

KALA\_24

ARMSTRONG COLLECTIVE



LANDSCAPING PLAN  
1:100



Abelia grandiflora nana



Nandina domestica nana



Loropetalum Plum



Scaevola Aussie Salute



Anthopodium



Coprosma Copper Shine

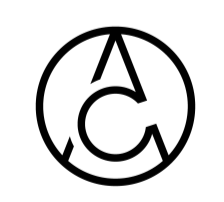


Choisya ternata



Dianella Cherry Red

LANDSCAPE MIX  
1:100



30 Henry St Fremantle Western Australia 6160  
 mail@armstrongcollective.com.au | 9433 1388  
 This drawing is copyright and shall always remain the property of  
 ARMSTRONG COLLECTIVE PTY LTD and must not be used in  
 any manner without the prior written approval of that company

**Proposed Copper & Oak Liquor Warehouse**  
 Lot 15, 10 Canning Road, Kalamunda

**Landscaping Plan** **SK1.03** REV **A**  
 1:100 At A1 30.10.24 KALA\_24

ARMSTRONG COLLECTIVE