

City of Kalamunda

Verge Maintenance 2019

Community Engagement Report



Overview

- Community engagement ran from 1 August to 21 October 2019
- The online survey was viewed by 1,250 people
- 638 surveys received

Survey Demographic

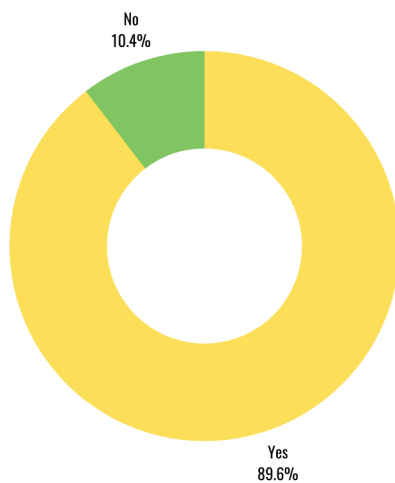
- 56% female
- 73.3% over 45 years
- 52.8% residents
- Top 4 suburbs - Forrestdale, Lesmurdie, High Wycombe & Kalamunda

Key Findings

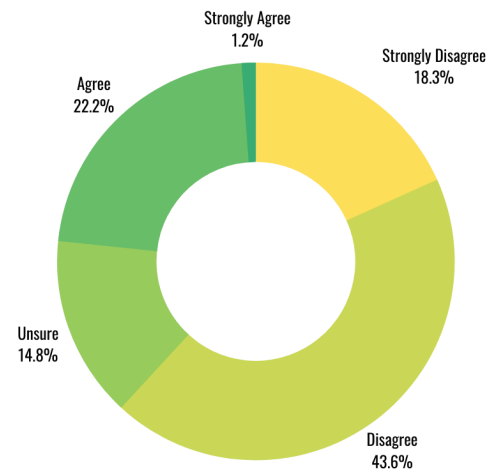
- 89.6% maintain their own verge
- 40.7% dissatisfied with standard of verges
- 83.2% want different verge standards for different land uses
- 69.2% (quantity) & 65.8% (quality) believe the City's annual verge maintenance is inadequate
- 73.3% are aware of the City's Plants for Residents initiative but only 25.2% know of the City's Street Tree Planting program
- 35% would like information about planting waterwise gardens

Raw Data - All Responses

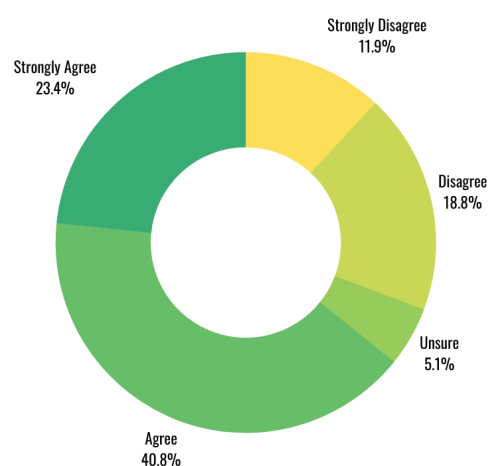
Do you currently maintain your own verge?



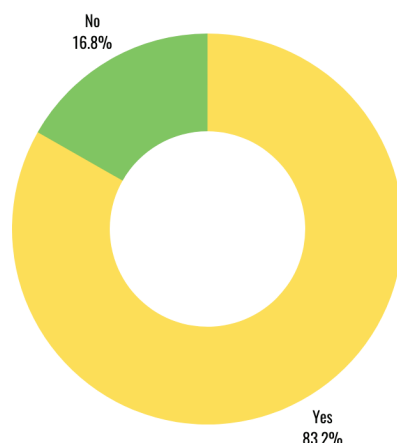
The verges throughout the City of Kalamunda are in acceptable condition



The verges at my residence are in acceptable condition



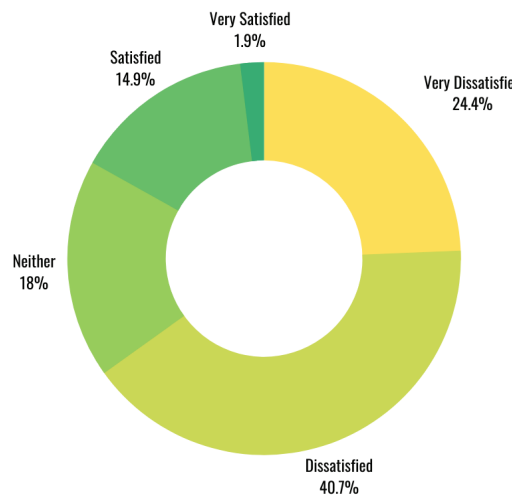
Do you think there should be different standards for certain areas, such as rural, residential, commercial and major roads?



Additional feedback - Yes

- *Main roads should almost be maintained to a higher standard to promote a sense of ownership and well cared for city*
- *It should be in keeping with the environment/location. Rural I would expect more weeds etc. adds to the rustic look. Commercial should be clean and vibrant. industrial clean and sparse, more trees rather than shrubs, depending on whether masking is required. Residential should see weeds kept down and mulched, lawn or hard standing*
- *Street Tree planting to sidewalks in commercial area for more shade. Native planting with off-street parking areas in residential areas. Gravel and native planting/wildflowers in rural and commercial areas. More street trees generally*
- *Major roads entering a suburb and shopping precincts should be landscaped appropriately with water wise native plants and mulch. Gravel verges are a heat sink in summer and loose pebbles can be a slip hazard to the elderly. Many are also left to grow weeds, looking untidy after a year or so*
- *Commercial should be used for parking and rural just slashed to 50mm*
- *We have several hundred metres of verge alongside our fenceline in Carmel. It is unrealistic to expect us to maintain it. it is bush vegetation, that occasionally needs a trim for visibility pulling out of driveway*

Overall, how satisfied are you with the standard of verges within the City?



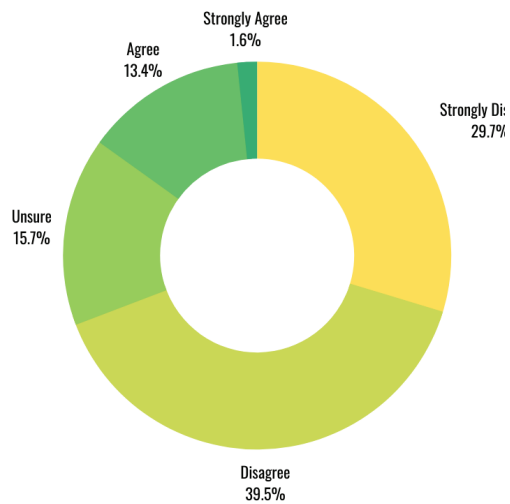
Additional feedback - Satisfied

- *Generally kept reasonably clear with some isolated problem areas from time to time. Would like to see more vegetation on verges generally though*
- *Generally well kept. Some parks seem to be better maintained than others but overall Kalamunda does well*
- *I think the City has the right balance with what it does in verge maintenance. In my view it is some home and business owners who need to take more community responsibility to maintain their own verge*

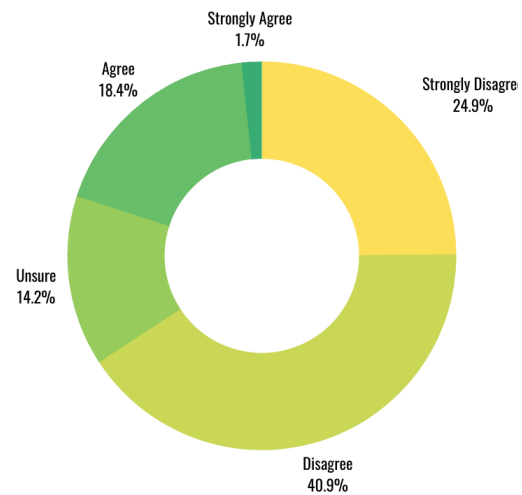
Additional feedback - Dissatisfied

- *I feel the residential area of Wattle Grove looks very messy with unkempt verges. Sometimes verges within residential Wattle Grove have weeds up to waist height*
- *Lack of maintenance. Weeds need spraying. Trees need pruning, especially the ones covering road signage*
- *Only very limited places get maintained and when you ring up for assistance nothing gets done*
- *Typical... of course you maintain the verges that everyone sees but the average street.... out of sight out of mind*

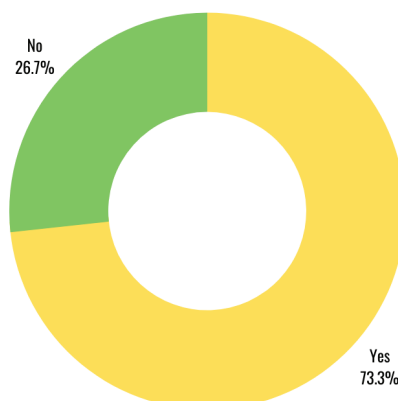
The quantity of verge maintenance undertaken each year is adequate



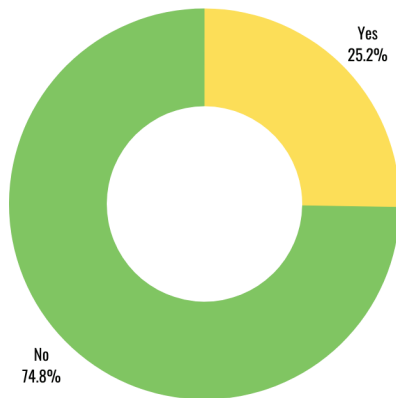
The quality of verge maintenance undertaken is adequate



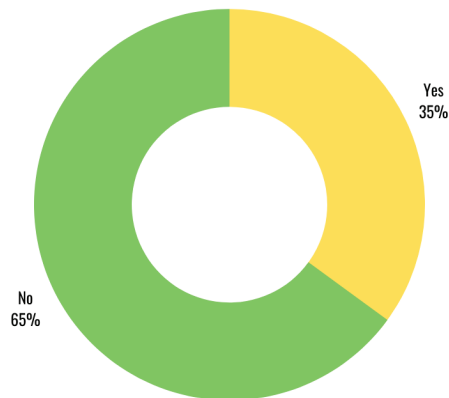
Are you aware of the City's Plants for Residents initiative which provides free native plants to ratepayers to support the establishment of natural habitat in backyards and verges across the City?



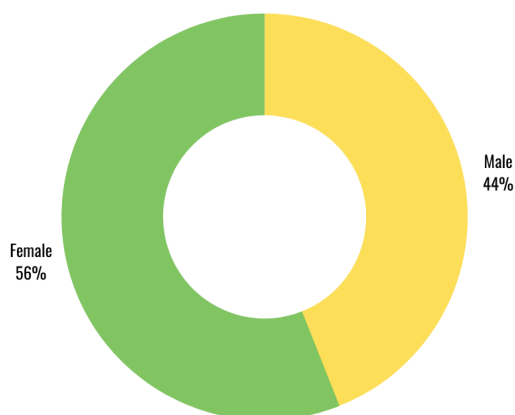
Do you know about the Street Tree Planting Program?



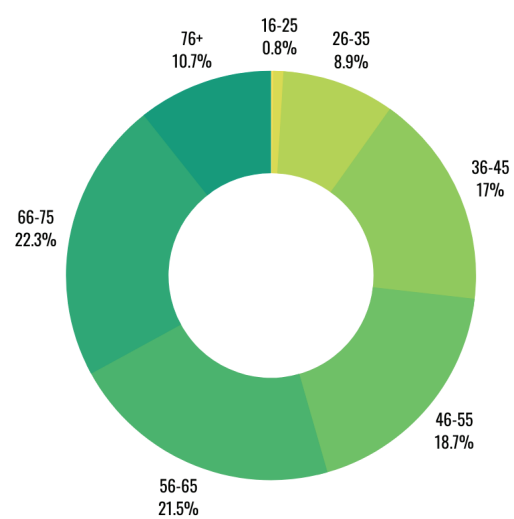
Would you like advice on how to succeed at planting low growing water-wise shrubs on your verge?



Gender

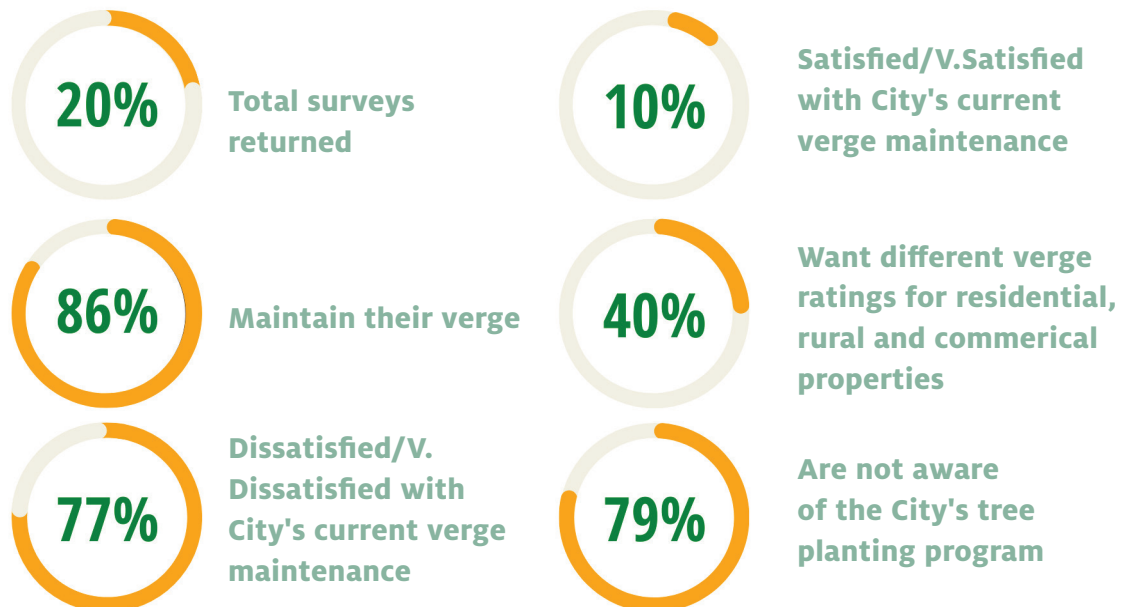


Age



Suburb Profile

Forrestfield - 130 surveys



Additional feedback

- *I wanted to plant lemon, orange, olive trees on my verge but wasn't sure if it was allowed*
- *I think the verges on the main roads should be sorted out as soon as possible. Then individual verges can be sorted with assistance from the city.*
- *I don't believe that Forrestfield gets the same resources (proportionately) as Kalamunda and if it does, it isn't managed very well.*
- *Feel that it has only been recently that the maintenance of the verges has dropped away. Unkempt verges reflects poorly on the City and does not help to instill pride in our neighbourhood*
- *Our verge is pea gravel, I would love to change it to something plantable!*
- *Seasonal verge maintenance is needed to make the shire look more clean and tidy.... trees on verges also need to be maintained, I don't even like ours but can't get rid of it because it's on shire land.....but no one looks after it....so I feel if I looks after I should be able to do what ever I want to it....*

Gooseberry Hill - 34 surveys

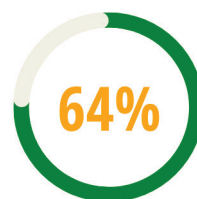
**Total surveys
returned**



**Satisfied/V.Satisfied
with City's current
verge maintenance**



Maintain their verge



**Want different verge
ratings for residential,
rural and commercial
properties**



**Dissatisfied/V.
Dissatisfied with
City's current verge
maintenance**

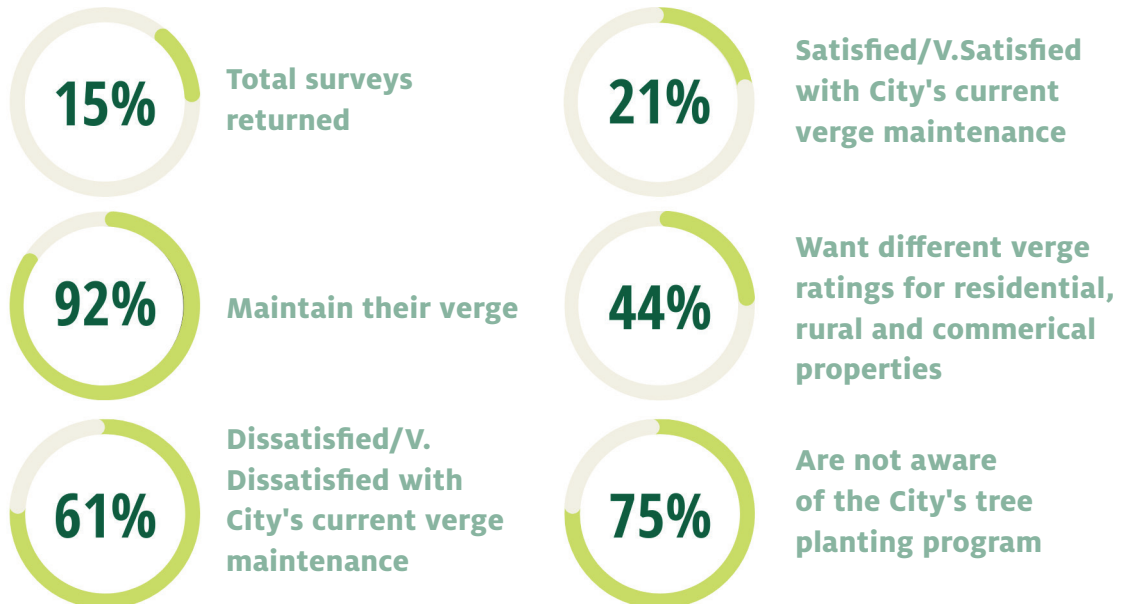


**Are not aware
of the City's tree
planting program**

Additional feedback

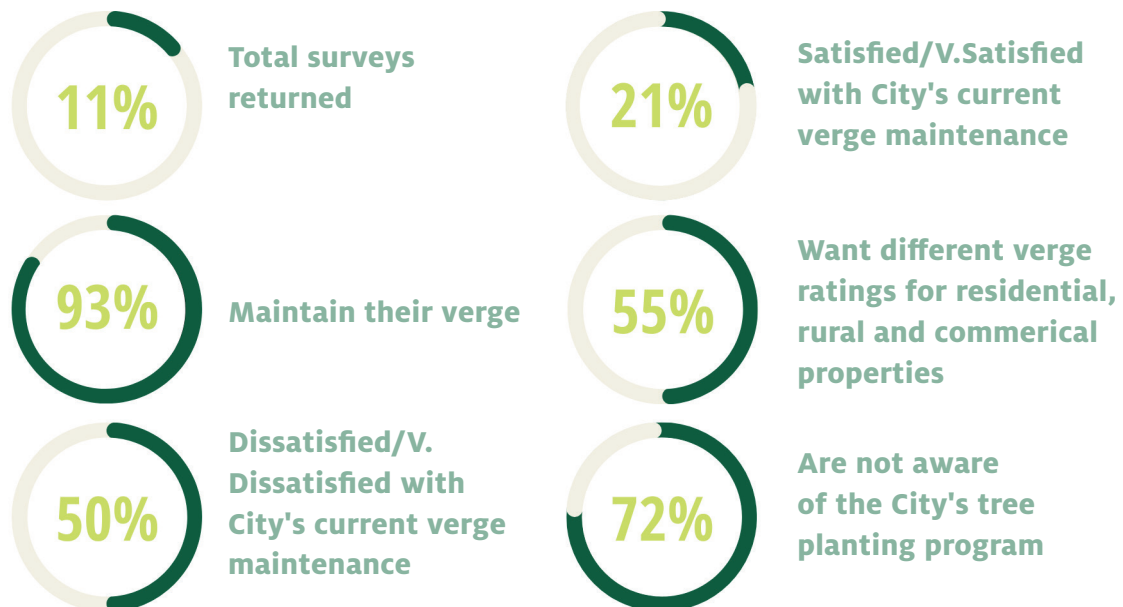
- Undertake a proper clean up of the verges within the City including rural areas and do this at least once a year before the fire season is upon us.
- Be more proactive. Don't wait for complaints do inspections. Charge for services/clean ups as a business would
- The city could whipper snip and spray a couple of times a year to lesson the burden on us keeping the city's verge clear of overgrown weeds on a corner block
- We're on a corner and have neither the time nor finance to maintain our 2 verges

High Wycombe - 97 surveys



Additional feedback

- *Listen to the rate payers and act on what the majority of the rate payers require, not what a developer wants*
- *Sort out the crappy verges of people who don't do it and give discount off rates to the people who look after their verges*
- *The High Wycombe / Forrestfield verge areas are very much the poorest cousins for the City of Kalamunda - we just never seem to get anything done...*
- *I understand the verge is not my property, but I see myself as doing the community a service by maintaining my verge. I also understand that no LG can afford to maintain verges to my standard. However, if a utility or the City need to dig up my verge, I would hope that they work to restore it for me to my standard.*
- *Provide a rate dis-incentive for those who do not maintain their verge. The majority do, so an incentive wouldn't be practical. Unless you build it into a rate rise and then deduct the cost?*
- *Consider the supply of fruit / nut trees for road verges instead of the Jacaranda trees*

Kalamunda - 72 surveys

Additional feedback

- *No mention of verge tree maintenance. This should be included in any future planning*
- *I've recently bought in Kalamunda and previous owner has planted native and non native on verge and there is a lot of weeds. I'd really like the opinion of the council how I could better maintain this verge as it's really untidy.*
- *Every property should have at least one street tree*
- *Maybe a workshop day or two when residents can discuss their verges and also be given plants and planting advice*
- *Stop using glysohate to kill weeds. We have many birds and wildlife around and it is bad. It is also a health risk to people walking on that ground that has been sprayed especially as there is never any warning*
- *I'd prefer to go away from skip/verge collection. Understand it's probably the cheapest means. The convenience and community sharing aspects of bulk verge collection twice yearly outweighed cost consolidation*

Lesmurdie - 118 surveys



Total surveys
returned



Satisfied/V.Satisfied
with City's current
verge maintenance



Maintain their verge



Want different verge
ratings for residential,
rural and commercial
properties



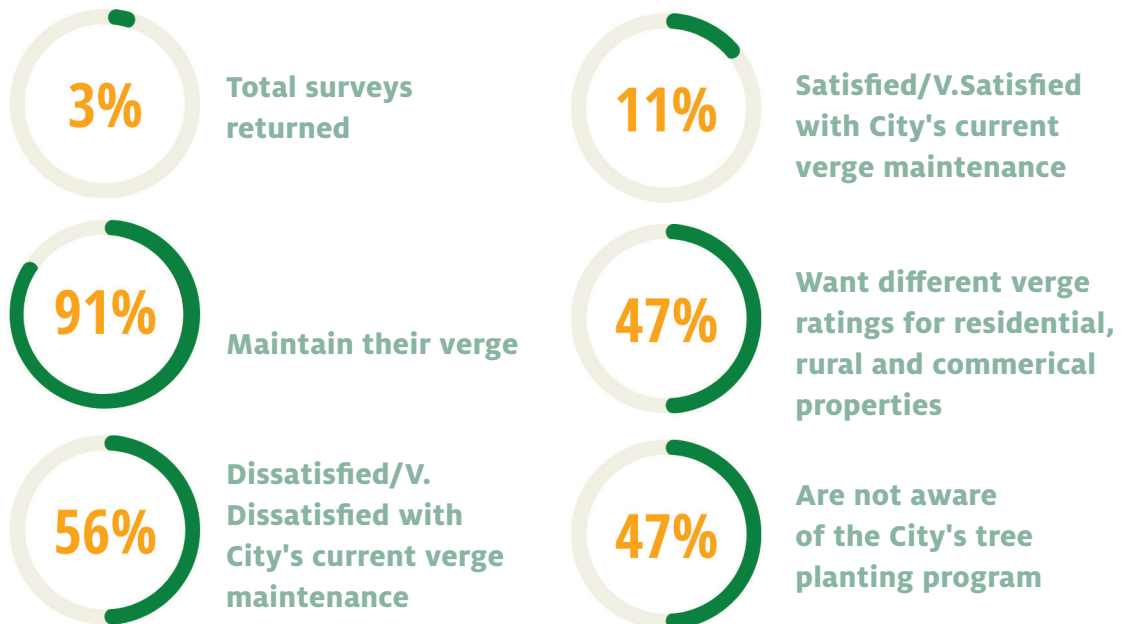
Dissatisfied/V.
Dissatisfied with
City's current verge
maintenance



Are not aware
of the City's tree
planting program

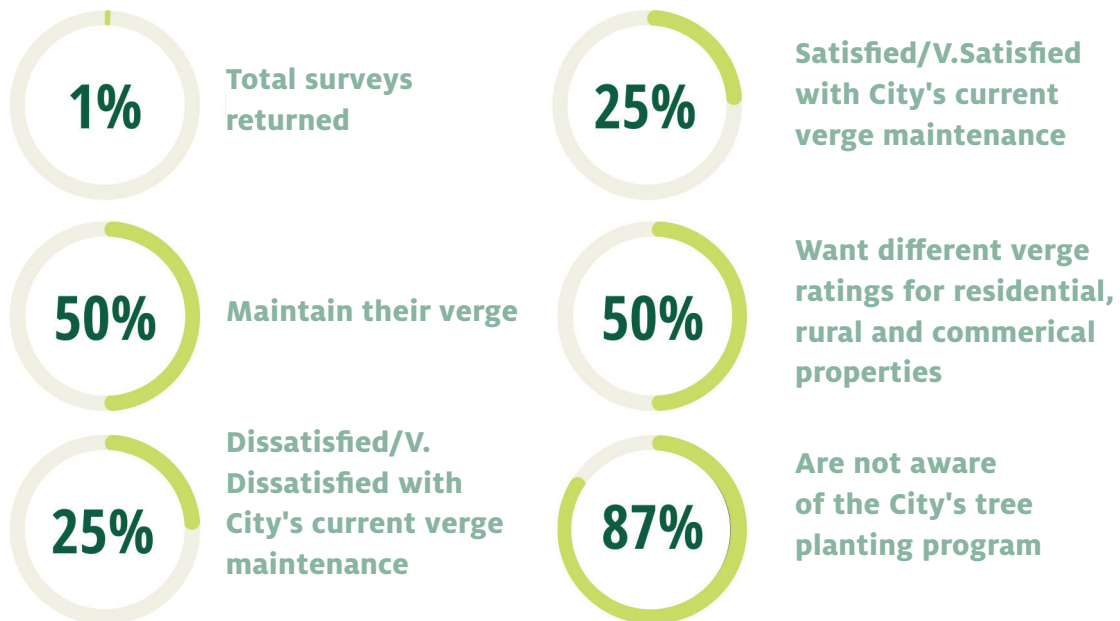
Additional feedback

- Have maintained our own verge for 35 years. Some low growing water wise ground cover, but predominantly a cracked gravel surface which we replenish every few years
- Provide feedback have an annual contest for the best kept verge and encourage fruit and vegetable to be grown on verges as in some other council locations
- This year we missed out on free native plants as there were none left when we were able to attend due to being shift workers. This is poor given we pay the same rates as everyone else in the city however have not received the same level of service/ provision of plants we are entitled to. I would appreciate reimbursement through a credit to our rates of provision of our quota of plants
- If the shire want to keep verges tidy they should continue to maintain them, if not a discount in rates should be applicable
- Spray for weeds bi annually
- It would be nice to allow and encourage verge gardens and vegetable gardens. A lot of people think its a great idea, as other shires and cities do

Maida Vale - 23 surveys

Additional feedback

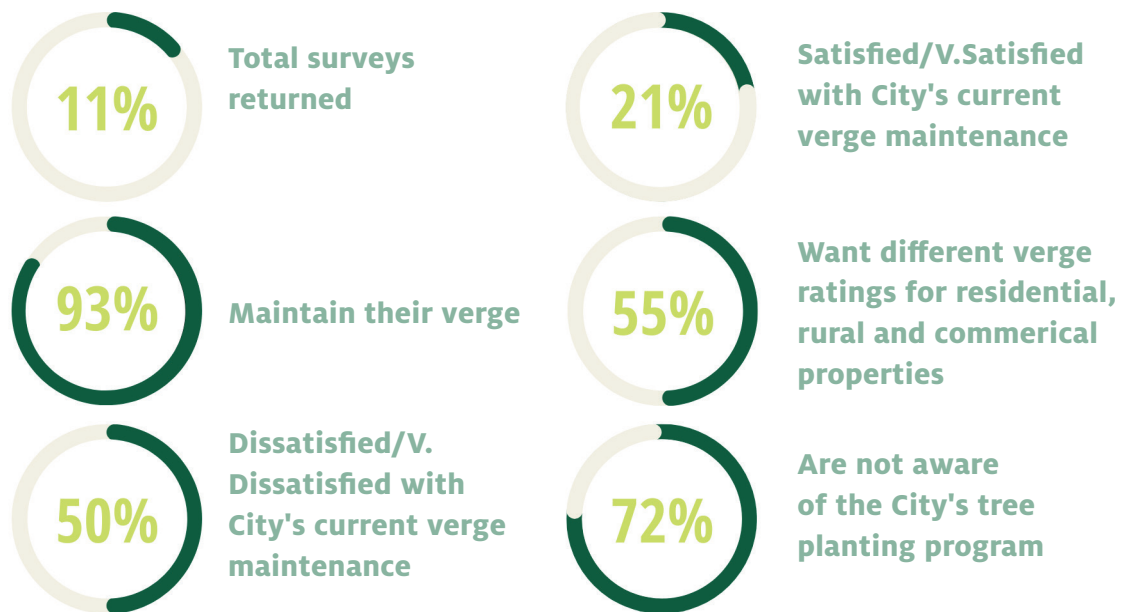
- *Provide good quality mulch to residents*
- *Many councils I see that are neat and tidy give a good impression of the area. Also a tidy council makes you feel safe. Peoples attitude to the area is more positive*
- *I think offering the elderly help to maintain their verge would be lovely. You can't rely on them knowing to ask about getting the shire to mow.*
- *When trees etc are grown on verge there is no where for cars to park so they park on the streets and in my opinion cause a traffic hazard all you need to do is drive around in my area in the evening*

Walliston - 8 surveys

Additional feedback

- *Plant more trees*
- *If the maintenance was carried out 2 more times throughout the year to catch all of the major weed growth times it would significantly impact areas where large weeds are prevalent. It's difficult to maintain aggressive weeds when they're not kept in check*
- *People need to take more pride in where they live. Fine people that don't care for their verge in summer they get too long - dangerous*

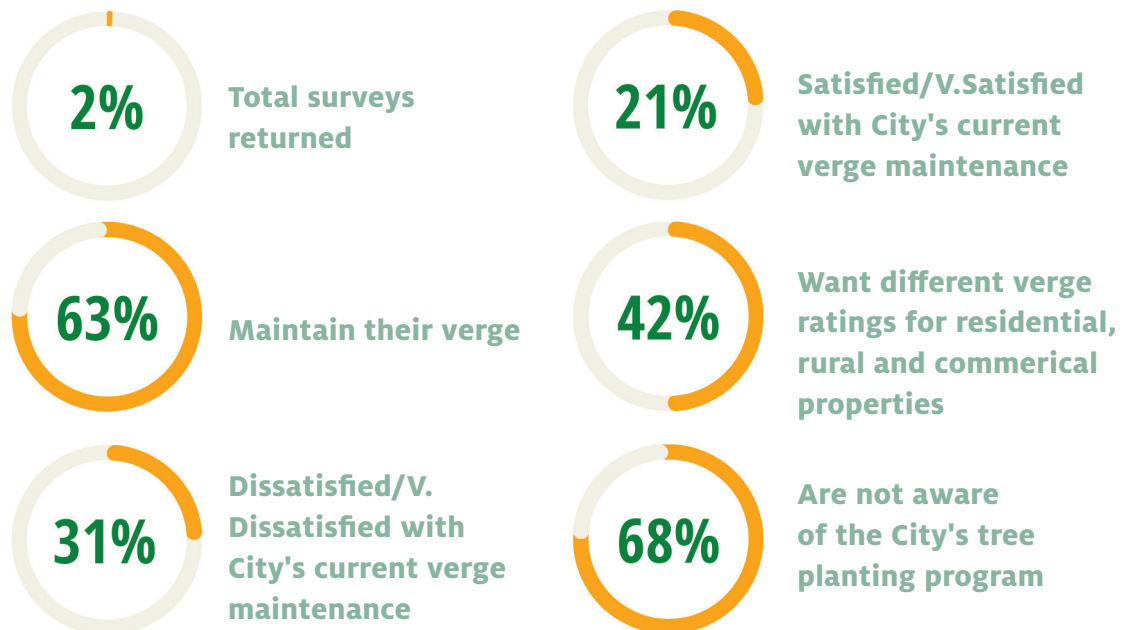
Wattle Grove - 67 surveys



Additional feedback

- *I have not been satisfied in the slightest with the verge activities of the shire of kalamunda and would prefer if was left to the property owners to handle*
- *City of Kalamunda are very lazy in many aspects of how they upkeep many local areas. I feel they put out these surveys and want to know peoples opinions but actually don't take any of it into consideration. It seems like they do it just to tick the box that they've consulted the local property owners. I doubt this survey will actually change anything that this council does!*
- *Would rather see fruit trees planted then oriental*
- *The verges on Welshpool road between Hale road and Tonkin Highway are an absolute disgrace. This stretch of road is the gateway to the tourism regions in the hills and it desperately needs beautification and more street lights*
- *I feel that verge maintenance should be undertaken twice a year as once is just not enough*

***Rural - 19 surveys**



Additional feedback

- Undertake a proper clean up of the verges within the City including rural areas and do this at least once a year before the fire season is upon us
- Have never yet been successful in getting plants for residents - queues are so long and best (suitable) plants gone early, and there appears to be a certain amount of greed by some each year. Guess we all want better bang for our rates buck!. Mundaring scheme seems to work better
- Be more proactive. Don't wait for complaints do inspections. Charge for services/clean ups as a business would
- I think we should think of verges as potential carbon sinks to mitigate climate change, and plant them with as many trees as possible. It is also shown that leafy suburbs are naturally a few degrees cooler in summer than ones that have little tree cover

*Includes Bickley, Carmel, Hacketts Gully, Pickering Brook, Piesse Brook

Recommendations

City to investigate and cost:

- Improving frequency of current verge maintenance program to twice a year
- Prepare resident verge maintenance program/initiative to roll out within 18-months transitioning from City to residential upkeep ie. encourage edible gardens, native gardens, discourage/ban lawns, paving. City to include phased approach
- Introduction of varied verge standards for different land uses ie. residential, rural, commercial
- Awareness campaign re: street tree planting and program bi-annual waterwise garden workshops

City of Kalamunda

2 Railway Road, Kalamunda WA | PO Box 42, Kalamunda 6926

(08) 9257 9999 | Facsimile: (08) 9293 2715

enquiries@kalamunda.wa.gov.au

www.kalamunda.wa.gov.au