

LEGEND

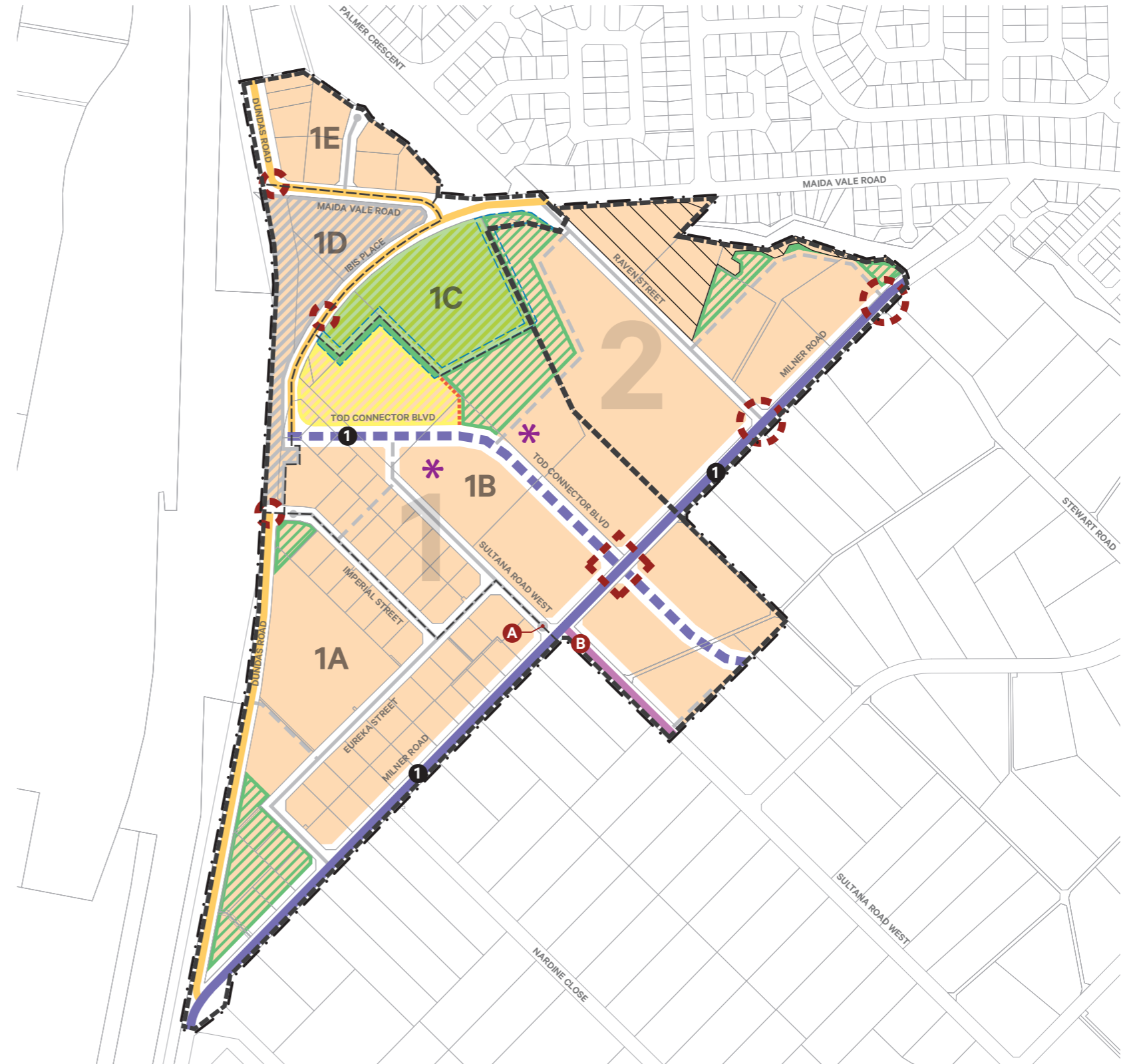
- Activity Centre Plan Boundary
- EXISTING PLANNING FRAMEWORK**
- Metronet East Redevelopment Area**
- Project Area: Forrestfield North (RAC-0)
- Ecological Conservation (Conservation Category Wetland)
- Bush Forever
- PROPOSED PLANNING FRAMEWORK**
- Region Scheme Reserves**
- Railway
- Local Scheme Reserves and Environmental Conservation**
- Local Open Space
- Public Purposes: Community Purpose
- Environmental Conservation
- Other Categories**
- District Integrator A (Existing / Proposed)
- District Integrator B (Existing / Proposed)
- Neighbourhood Connector (Existing / Proposed)
- Local Street (Existing / Proposed)
- Proposed Roundabout
- Proposed Signalised Intersection
- Cul de Sac Head
- No Right Out Intersection
- Strategic Site
- Hazard separation required at subsequent planning stages to ensure that no residential land is affected by BAL-40 or BAL-FZ
- Indicative Drainage Corridor
- Notes**
- Final road widths and indicative cross sections to be determined following a traffic assessment

Precincts

- 1 Forrestfield Station Precinct
- 2 Residential Precinct

Sub-Precincts

- 1A Eureka Sub-Precinct
- 1B Core Sub-Precinct
- 1C Conservation Sub-Precinct
- 1D Station Sub-Precinct
- 1E Maida Vale Sub-Precinct



Activity Centre Plan
Forrestfield North TOD Precinct

DRAFT

Date: 23 Jul 2021 Scale: 1:6000@ A3 1:3000 @ A1 File: 17-527 ST-1 A Staff: MC MS GW Checked: MS



element.

Level 18, 191 St Georges Terrace, Perth Western Australia 6000.
PO Box 7375 Cloisters Square, Perth Western Australia 6850.
T. +61 8 9289 8300 | E. hello@elementwa.com.au elementwa.com.au