

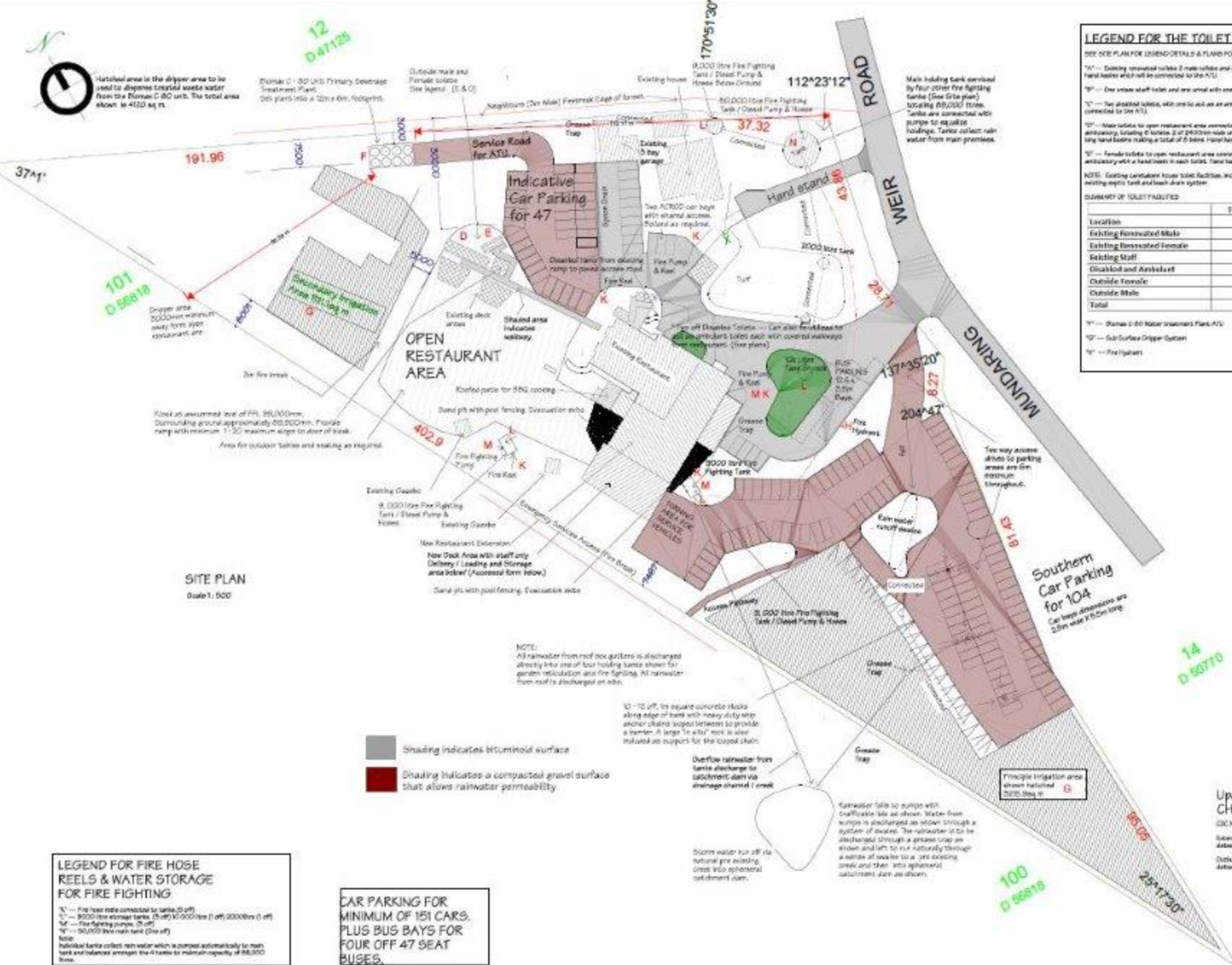


Hatched area is the digger area to be used to divert treated waste water from the Domain C-BC unit. The total area shown is 4120 sq m.

12  
D 47125

Domain C - BC Unit Primary Coverage Treatment Plant  
Dry plants into a 12m x 6m footprint.

Outside male and female toilets (T & O)



**SITE PLAN**  
Scale 1:500

**LEGEND FOR THE TOILET & SEWERAGE SYSTEM**

SEE SITE PLAN FOR LEGEND DETAILS & PLANS FOR LOCATIONS

T1 - Existing residential toilet 2 male toilets and one double unit with 2 hand basins, 2 female toilets with 3 hand basins which will be connected to the ATU

T2 - One urinal staff toilet and one urinal with one hand basin which will be connected to the ATU

T3 - Two disabled toilets, with one to act as an ambulant toilet each with a hand basin which will be connected to the ATU

T4 - Male toilet for open restaurant area connected to the outside via a walkway. It includes a plus one ambulatory, including 2 toilets, 2 or 3000mm wide urinal, 8 hand basins and 2 off 3000mm wide 2 off 3000mm long hand basins making a total of 8 basins. Hand basins will be connected to the ATU

T5 - Female toilet for open restaurant area connected to inside via walkway, six personal toilets, all ambulatory with a hand basin in each toilet. Hand basins will be connected to the ATU

NOTE: Existing cantenave house toilet facilities, including shower and hand basin are all connected to an existing septic tank and leach drain system.

SUMMARY OF TOILET FACILITIES

Location	Toilets	Urinals	Hand Basins
Existing Residential Male	2	2	3
Existing Residential Female	2		2
Existing Staff	1	1	1
Disabled and Ambulant	2		2
Outside Male	8		6
Outside Female	8		6
<b>Total</b>	<b>20</b>	<b>3</b>	<b>23</b>

T1 - Domain C-BC Water Treatment Plant ATU  
T2 - Sub-Surface Dripper System  
T3 - Fire Hydrant

**LEGEND FOR FIRE HOSE REELS & WATER STORAGE FOR FIRE FIGHTING**

T1 - Fire hose reel connected to tanks (2 off)  
T2 - 3000 litre storage tanks (5 off) 10 000 litre (1 off) 20000 litre (1 off)  
T3 - Fire fighting pump (2 off)  
T4 - 50 000 litre main tank (2 off off)

Note:  
Individual tanks collect rain water which is pumped automatically to main tank and balanced amongst the 4 tanks to maintain capacity of 80,000 litres.

**CAR PARKING FOR MINIMUM OF 151 CARS, PLUS BUS BAYS FOR FOUR OFF 47 SEAT BUSES.**

**Updated Construction Drawings for CHALET RIGI**

DC: No. 2016/0108 issued by Quercy Hay, Hensley Group on 21/10/2016  
 85/94/16  
 Subordinate & Amendment - Related Planning Issues No. 2016/0108  
 Approved 21/10/2016 by Suburban Council.

Developed by Quercy Hay & Partners - Related Planning Issues No. 2016/0108  
 Approved 21/10/2016 by Suburban Council

**SHEPPARD DESIGN & DRAFTING SERVICES**  
 27 Salisbury Avenue, South Perth WA 6150  
 08 9447 1234  
 Email: sheppard@sheppard.com.au

**PROPOSED EXTN'S & ALTN'S TO CHALET RIGI FOR SAFERIGHT INTERNATIONAL.**

No. 415, MUNDARING WEIR ROAD, PIESSE BROOK

REVISED PLAN 29th January 2020