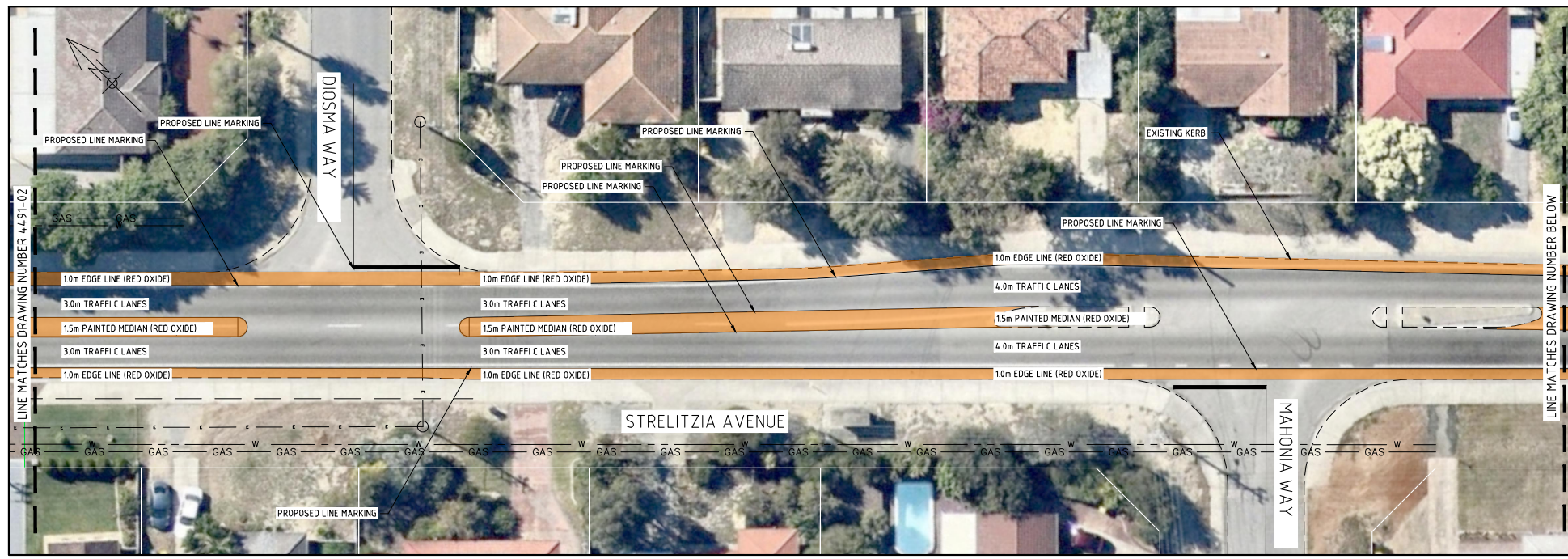


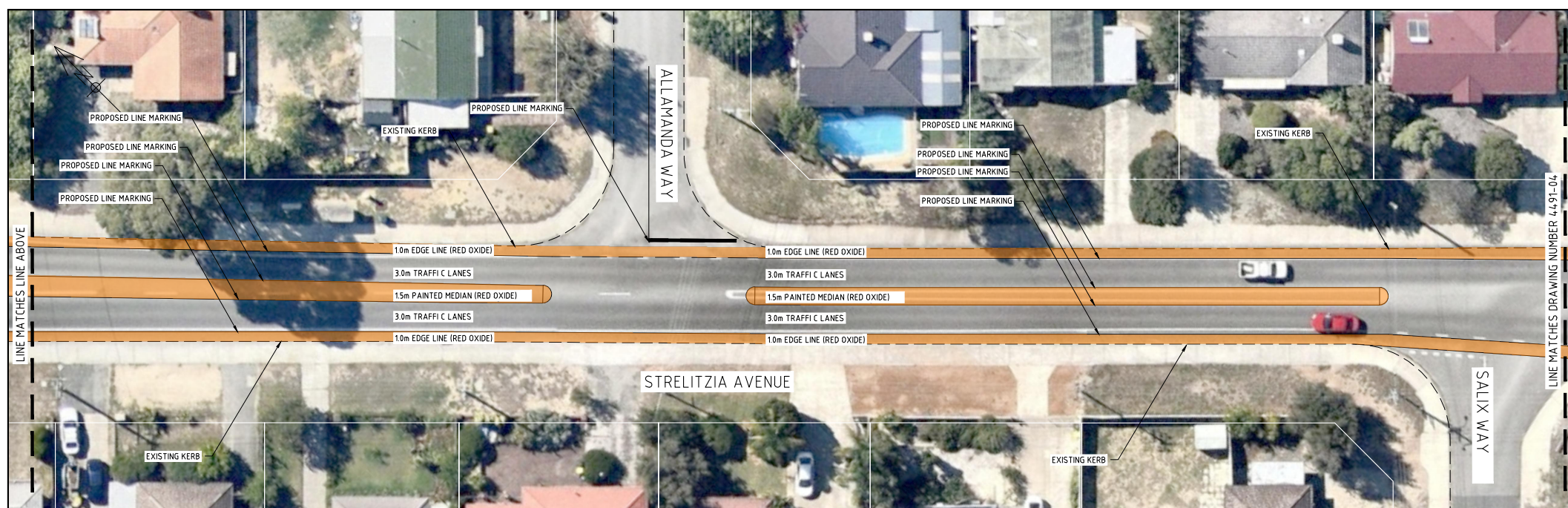
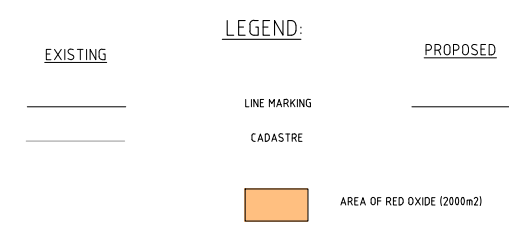
4491-03-01/A



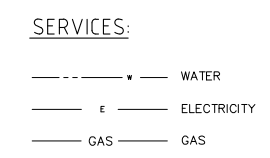
PLAN



LOCALITY PLAN



PLAN



- NOTES:**
- CADASTRAL INFORMATION APPROXIMATE ONLY.
 - SERVICE LOCATIONS DIAGRAMMATIC ONLY. CONTACT SERVICE AUTHORITIES FOR EXACT IN GROUND LOCATIONS.
 - KERBING TO BE CONSTRUCTED IN ACCORDANCE WITH CITY OF KALAMUNDA DRGS. 7A TO 7D
 - ALL DISTURBANCES TO EXISTING VERGE RETICULATION AND TURFING TO BE REINSTATED.

city of Kalamunda **ASSET SERVICES**

STRELITZIA ROAD
PEDESTRIAN CROSSING RELOCATION
HALE ROAD TO BOUGANVILLE AVENUE

CONCEPT PLAN

DRAWING No. _____ SHEET _____ /REVISION _____ ORIGINAL DRG. SIZE _____

4491-03-01/A A1

Job No. 3456

WARNING
SERVICES AND CADASTRAL BOUNDARY LOCATIONS ARE ONLY INDICATIVE AND MUST NOT BE USED FOR EXCAVATION. THE "ONE CALL 1100" SYSTEM SHALL BE USED TO OBTAIN ACCURATE SERVICE LOCATIONS.

REVISION				REVISION				SCALE				SURVEYED				DRAWN				ALIGNED				CHECKED				APPROVED			
No.	By	Date	Auth.	No.	By	Date	Auth.	1:250	2.5	5.0	7.5	10.0	12.5	C. EDMEADES	INFRASTRUCTURE DESIGN OFFICER	19/09/2020	MANAGER ASSET DELIVERY	19/09/2020	CI	Structure Code	420	DRIVING No.	SHEET	REVISION	ORIGINAL DRG. SIZE						
A1	ISSUED FOR INTERNAL REVIEW	CE	15/06/20																												