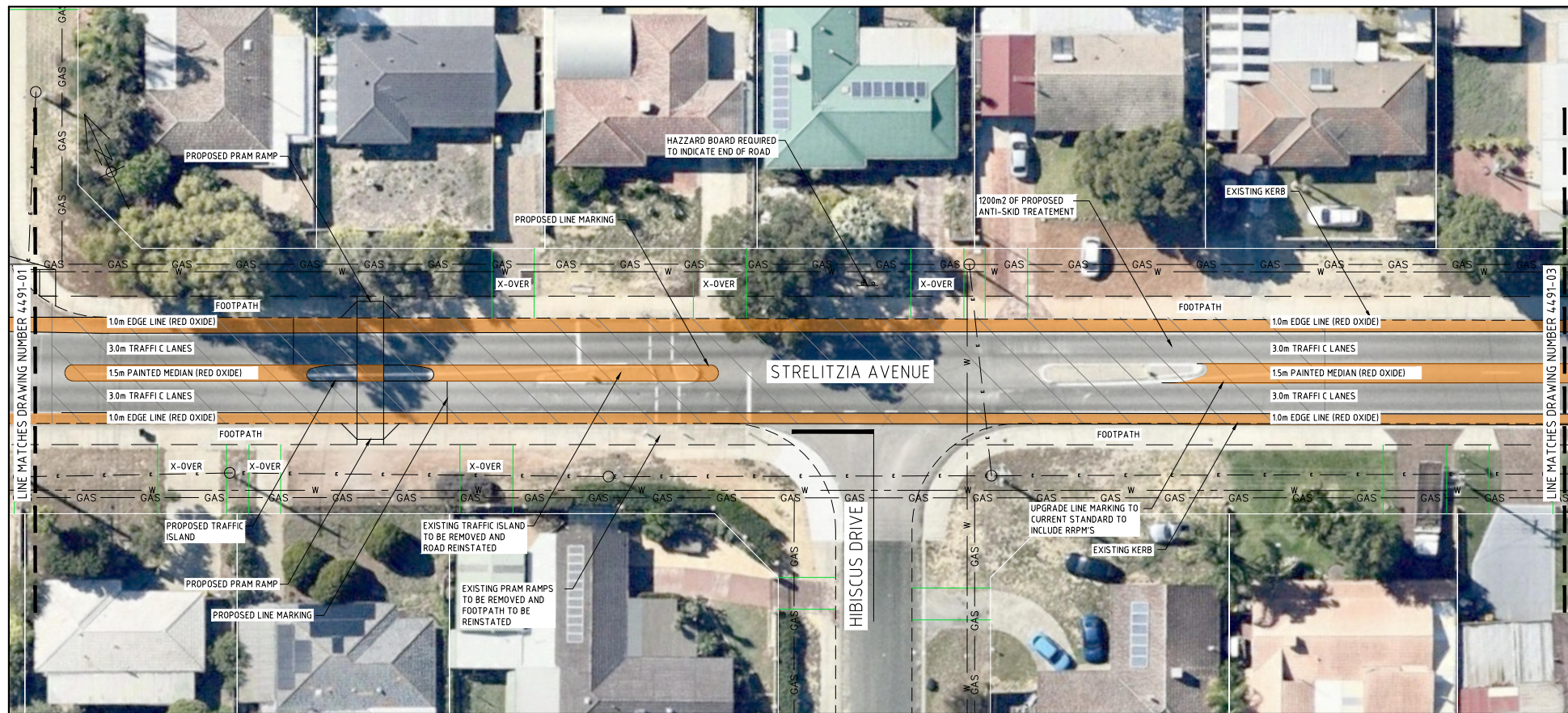
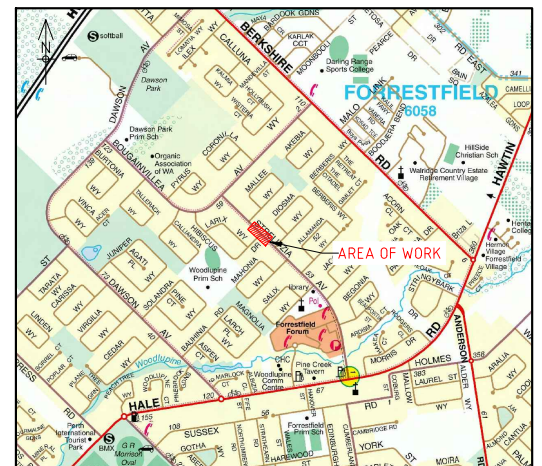


4491-02-01/A



PLAN



LOCALITY PLAN

SERVICES:

- WATER
- ε ELECTRICITY
- GAS

LEGEND:

- | | | | |
|-----|--|-----|----------|
| --- | EXISTING | --- | PROPOSED |
| --- | SEMI-MOUNTABLE KERB | --- | |
| --- | LINE MARKING | --- | |
| --- | CADASTRE | --- | |
| | AREA OF ROAD REHABILITATION TREATMENT (1200m2) | | |
| | AREA OF RED OXIDE (2000m2) | | |

NOTES:

1. CADASTRAL INFORMATION APPROXIMATE ONLY.
2. SERVICE LOCATIONS DIAGRAMMATIC ONLY. CONTACT SERVICE AUTHORITIES FOR EXACT IN GROUND LOCATIONS.
3. KERBING TO BE CONSTRUCTED IN ACCORDANCE WITH CITY OF KALAMUNDA DRGS. 7A TO 7D
4. ALL DISTURBANCES TO EXISTING VERGE RETICULATION AND TURFING TO BE REINSTATED.

WARNING
SERVICES AND CADASTRAL BOUNDARY LOCATIONS ARE ONLY INDICATIVE AND MUST NOT BE USED FOR EXCAVATION. THE "ONE CALL 1100" SYSTEM SHALL BE USED TO OBTAIN ACCURATE SERVICE LOCATIONS.

	ASSET SERVICES
	STRELITZIA ROAD PEDESTRIAN CROSSING RELOCATION HALE ROAD TO BOUGANVILLE AVENUE
CONCEPT PLAN	
DRAWING No. 4491-02-01/A	SHEET /REVISION ORIGINAL DRG. SIZE A1

NO.	REVISION	BY	DATE	AUTH.	NO.	REVISION	BY	DATE	AUTH.	SCALE	DATE	DESIGNED	CHECKED	APPROVED	DISCIPLINE	STRUCTURE CODE
A1	ISSUED FOR INTERNAL REVIEW	CE	15/06/20							1:250		C. EDMEADES			CI	420