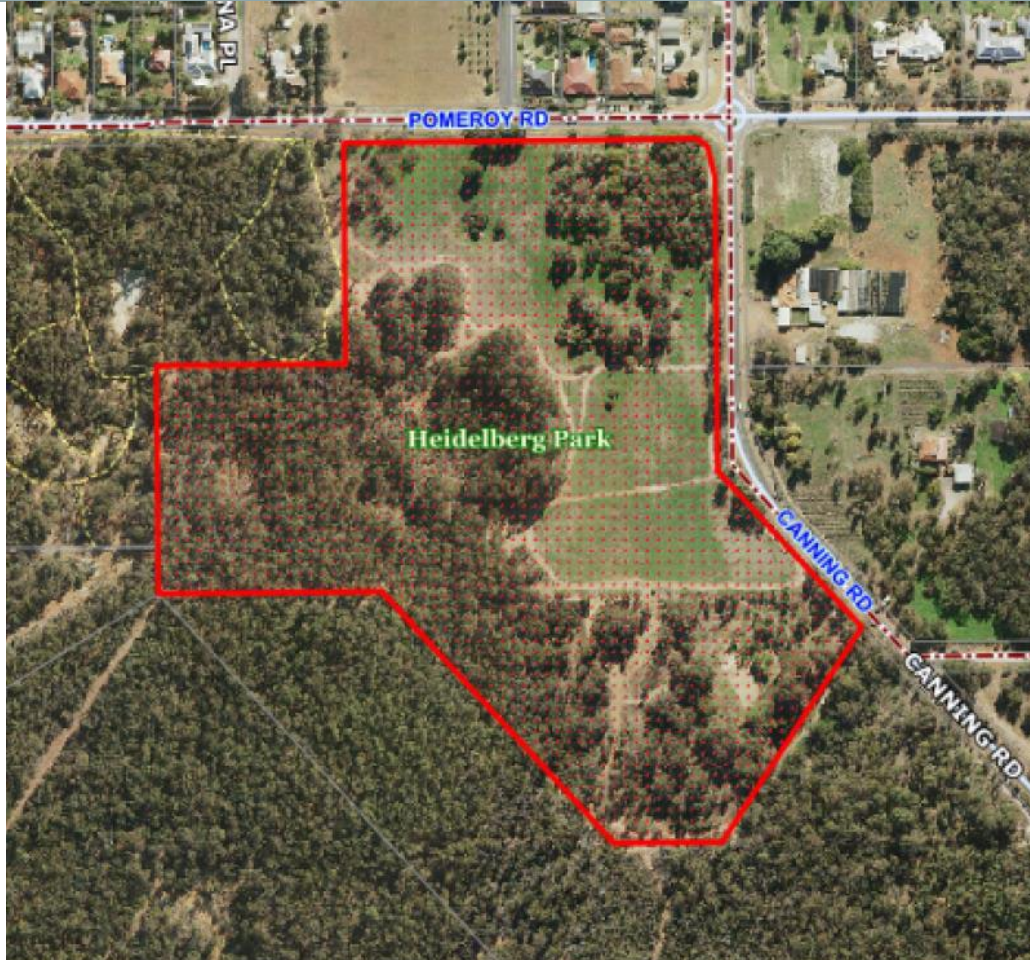


Heidelberg Consultation Outcomes Summary





Heidelberg Park is 13.5608 hectares of Parks and Recreation Reserve under Metropolitan Region Scheme on the south-western corner of the Pomeroy Road/Canning Road intersection in Carmel.

The site is owned by the State Government with a local government vesting.





Community Engagement Purpose

To gauge the community's perspective on potential land uses, the City has undertaken an engagement campaign that focuses on what the community envisage for the future of the Reserve.



Heidelberg Consultation

The community workshop and opportunity to comment on the Heidelberg Park: Share your Vision project was advertised in the following ways:

- On site signage
- Advertisements in the local newspapers
- Inclusion in the City's E-Newsletter
- Inclusion in the City's Kalamunda View
- Media release
- Flyers at City of Kalamunda facilities
- Social media posts (Facebook, Twitter, LinkedIn)
- Letters to residents within approximately 3km of the site
- Notification to Engagement HQ subscribers (activated by platform on live date)
- Copy provided to schools for inclusion in newsletters
- Email to key stakeholders groups and committees
- Information on City's website
- Information on City's engagement portal
- Pop up engagement stand at Kalamunda Farmer's Market on Sunday 9 June 2019 and at Kalamunda Central on 12 June 2019.



Community Workshop

A drop in workshop was held on site at Heidelberg Park, from 3:30pm to 5:30pm on Wednesday 19 June 2019.

Approximately 150 community members and stakeholders attended the workshop and participated in the activities.

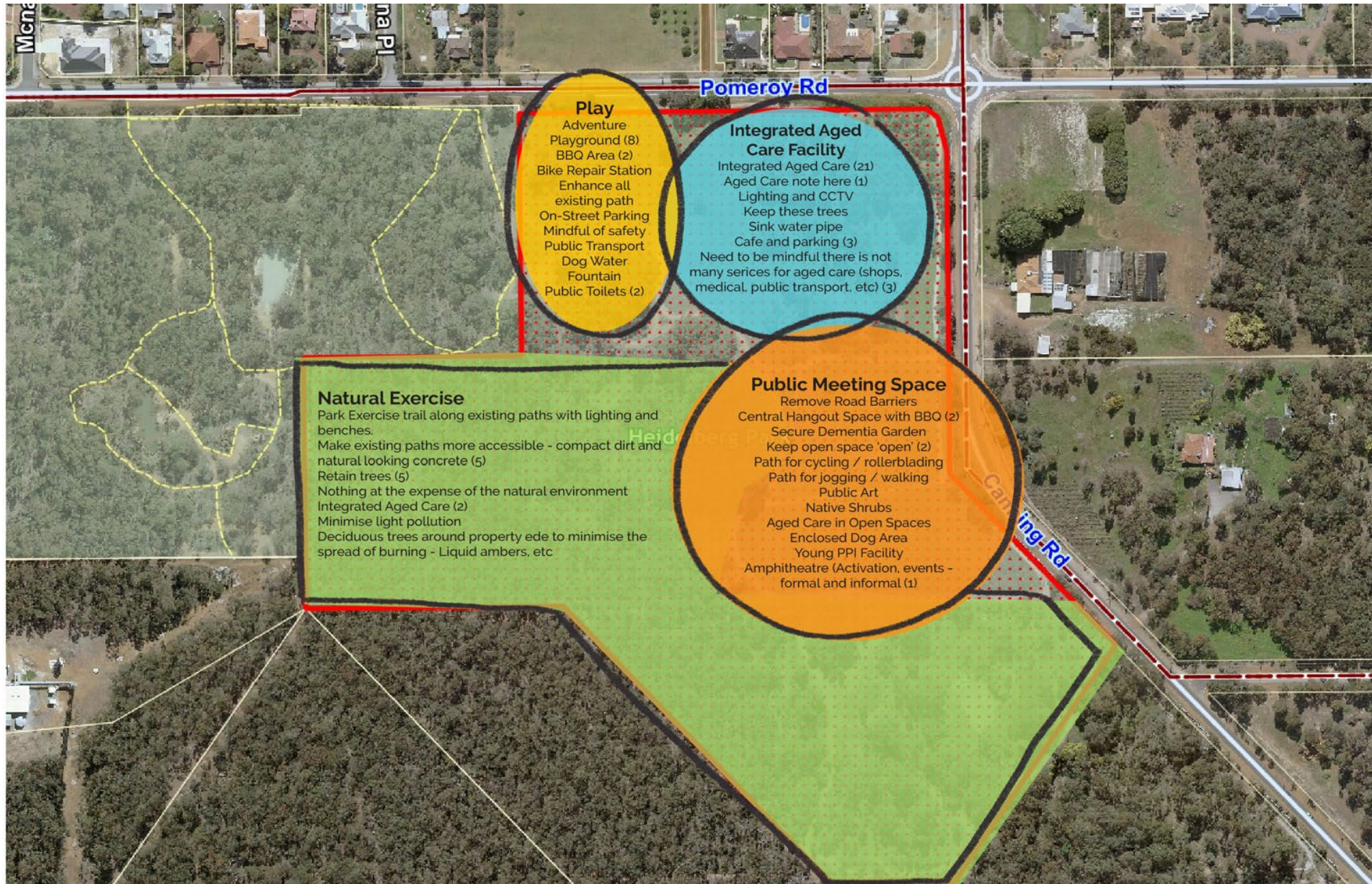
The City of Kalamunda engaged Town Team Movement to conduct the workshop and prepare a workshop summary and analysis of results.



Ideas Mapping

Participants were asked to brainstorm new ideas to develop the park and place the ideas on an aerial to show where the ideas should be located. As a result, 82 ideas were posted and four spatial themes emerged, including integrated aged care, natural, play and a central meeting space. The most popular ideas included aged care, playgrounds, natural paths and retention of vegetation, which is consistent with the 'dot'ocracy mapping exercise.





Ideas from the engagement

Popular Ideas from the engagement included:

1. Integration of young and young at heart. Develop a space for the entire family to enjoy.
2. Taking advantage of the unique natural surrounds
3. A playful environment
4. A space for the community to come together



Ideas from the engagement

The various engagement exercises were consistent in their results. The community were very clear that the design elements should include the following:

- 1. Options for intergenerational living** - the elder community were very vocal that they would like an aged care facility and the ability to 'age in place; and continue living in the Kalamunda area. However, other participants warned that the area does not have adequate services for aged care services. This will require further investigation by the City.
- 2. Retain** the natural vegetation and enhance the existing natural path for improved accessibility. The City may want to consider continuing to use natural materials to improve the paving and ensure it is accessible for everyone to use. Benches under shade is also a desired improvement.
- 3. Develop an open meeting place**, which has adequate facilities to bring the community together including barbeque facilities, toilets, parking and shade. Retain an open space for large formal and informal events.
- 4. Develop a play space**, which may include traditional equipment, nature play and something for pets. Ensure it is located to maximise visibility and safe from the roads, which are seemingly getting busier

Community Survey

A survey was established to capture the input of community and stakeholders. This was available online (engage.kalamunda.wa.gov.au) and in hard copy at all City of Kalamunda libraries between 28 May and 19 July 2019.

The survey was completed 393 times. The majority of respondents were female (68%) and resided in the escarpment (61%). A small number of respondents do not reside in the City of Kalamunda (4%). Most respondents (60%) were 66 and older. Many of the respondents (56%) have never visited the site. Of those that have visited the site, the top three reasons for visiting were “I travel through there on my way elsewhere” (26%), “Fresh air/connect with nature” (25%) and “Exercise” (25%).

Most (84%) think the site can be better utilised to meet the needs of the community.

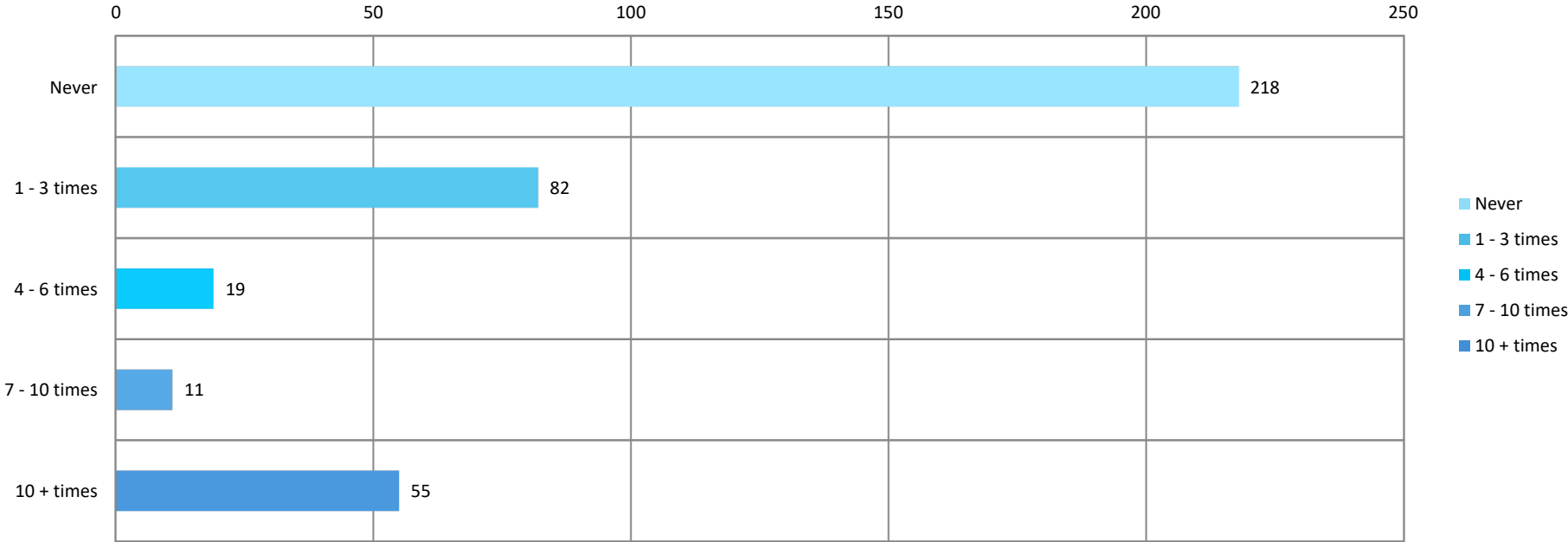
Of potential uses for the site, “Home for aged care” was the most popular response (247 votes).

“Home for over 55s” was the second most popular (147 votes), followed by a nature area (140 votes).



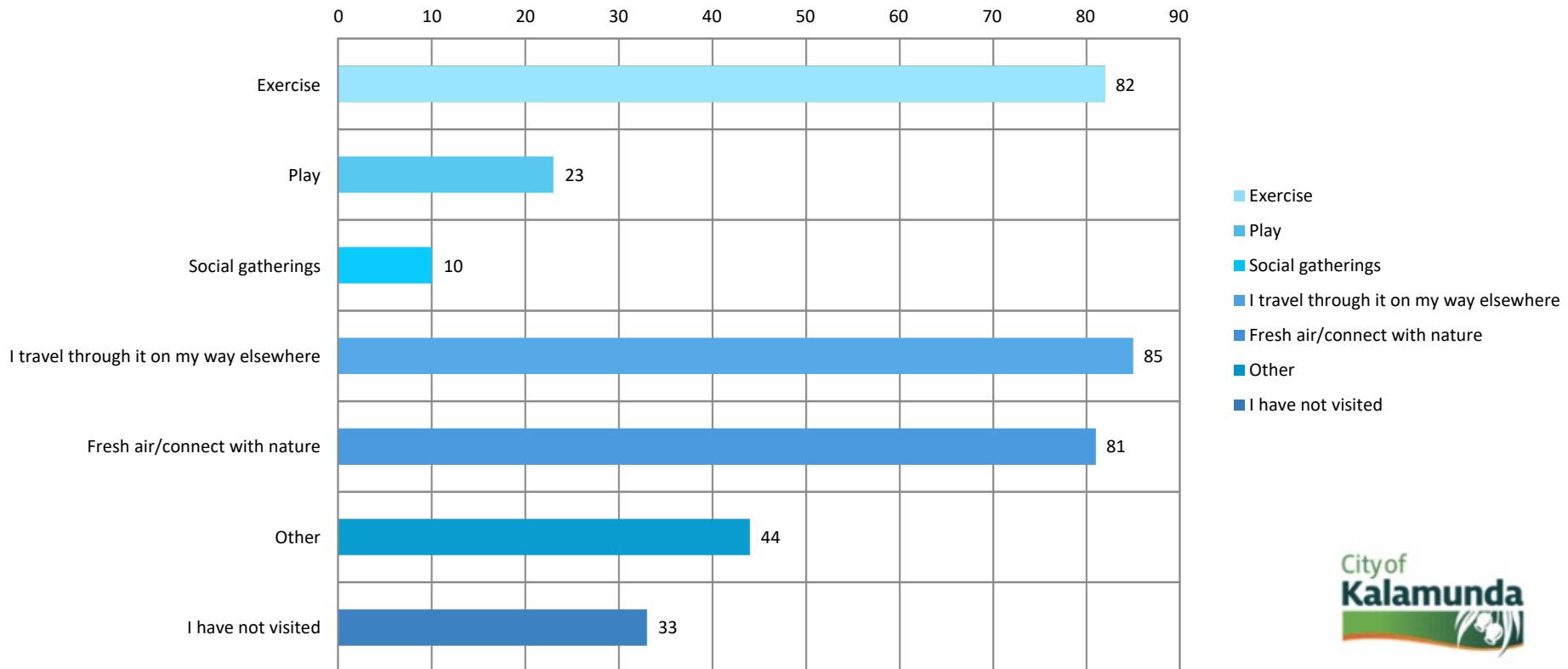


How many times have you visited Heidelberg Park in the last 12 months?



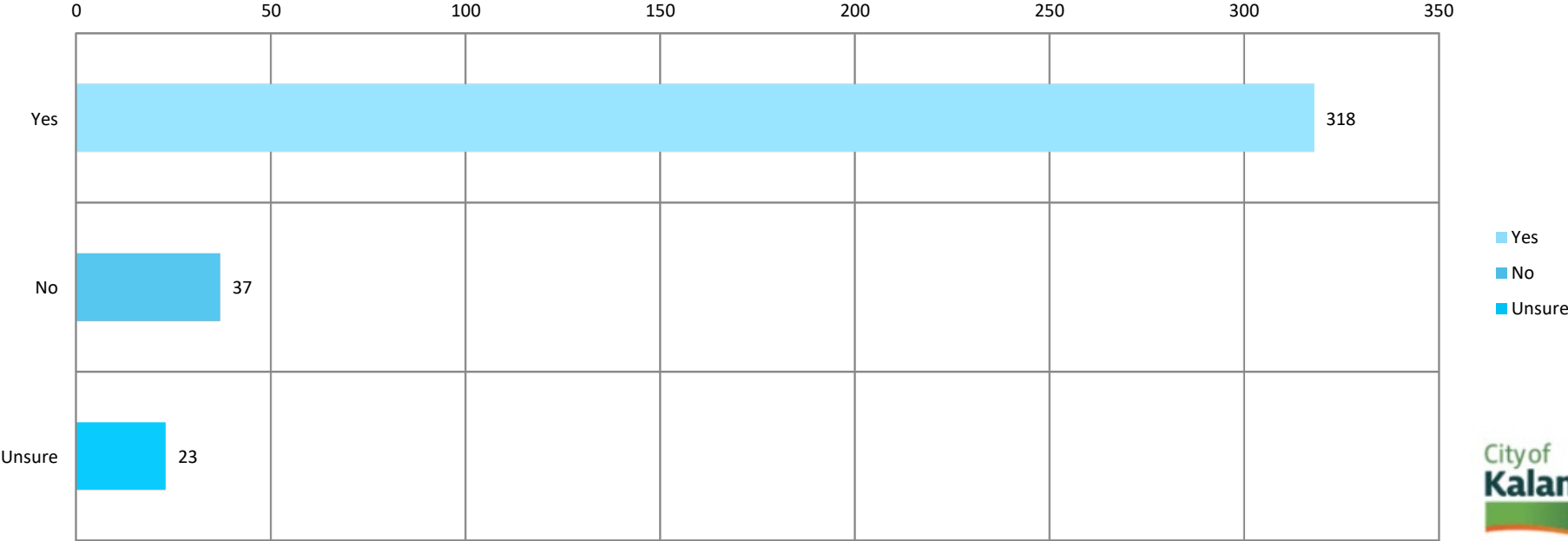


If you have visited Heidelberg Park, what were your main reasons for visiting (tick all that apply)?

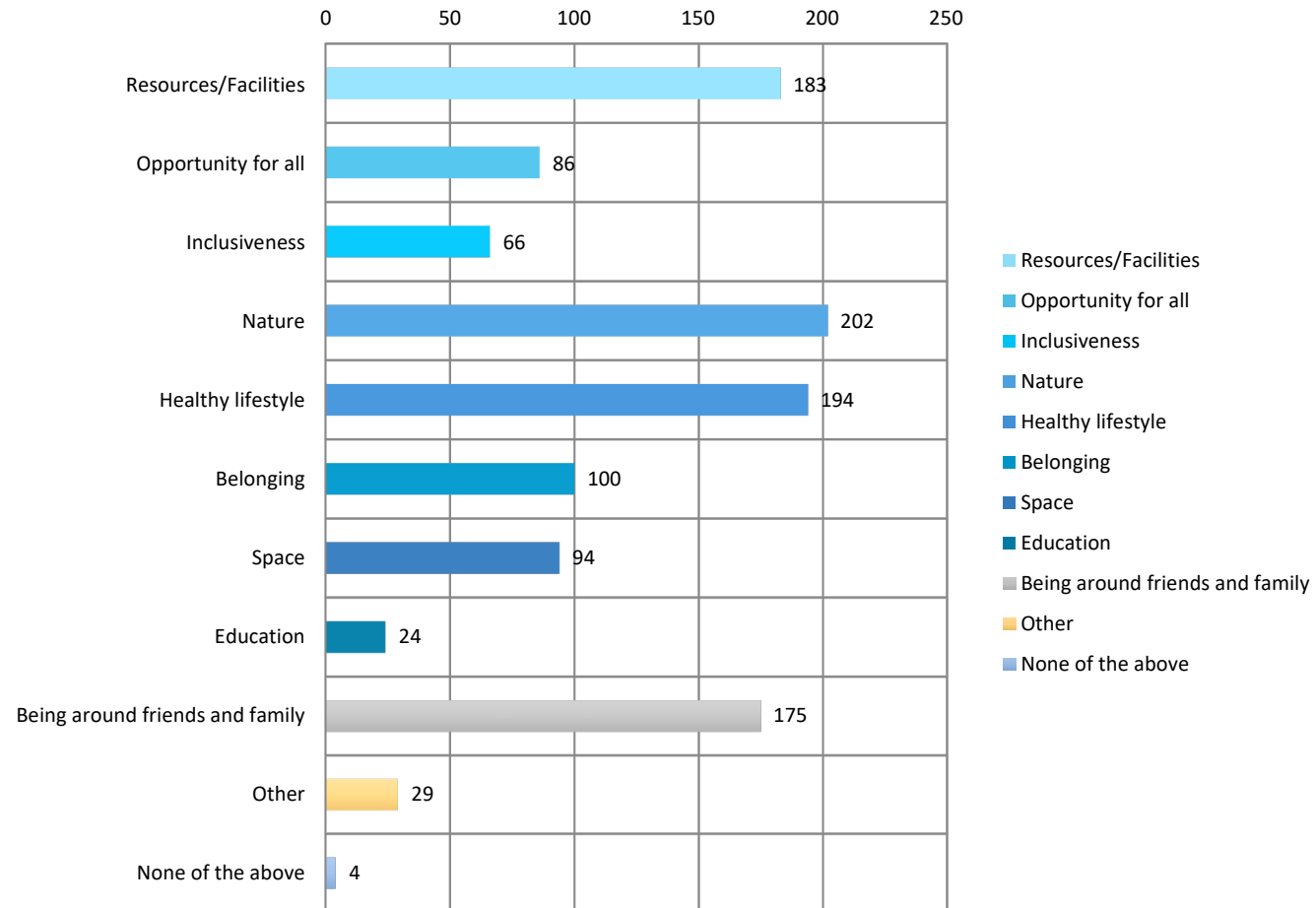




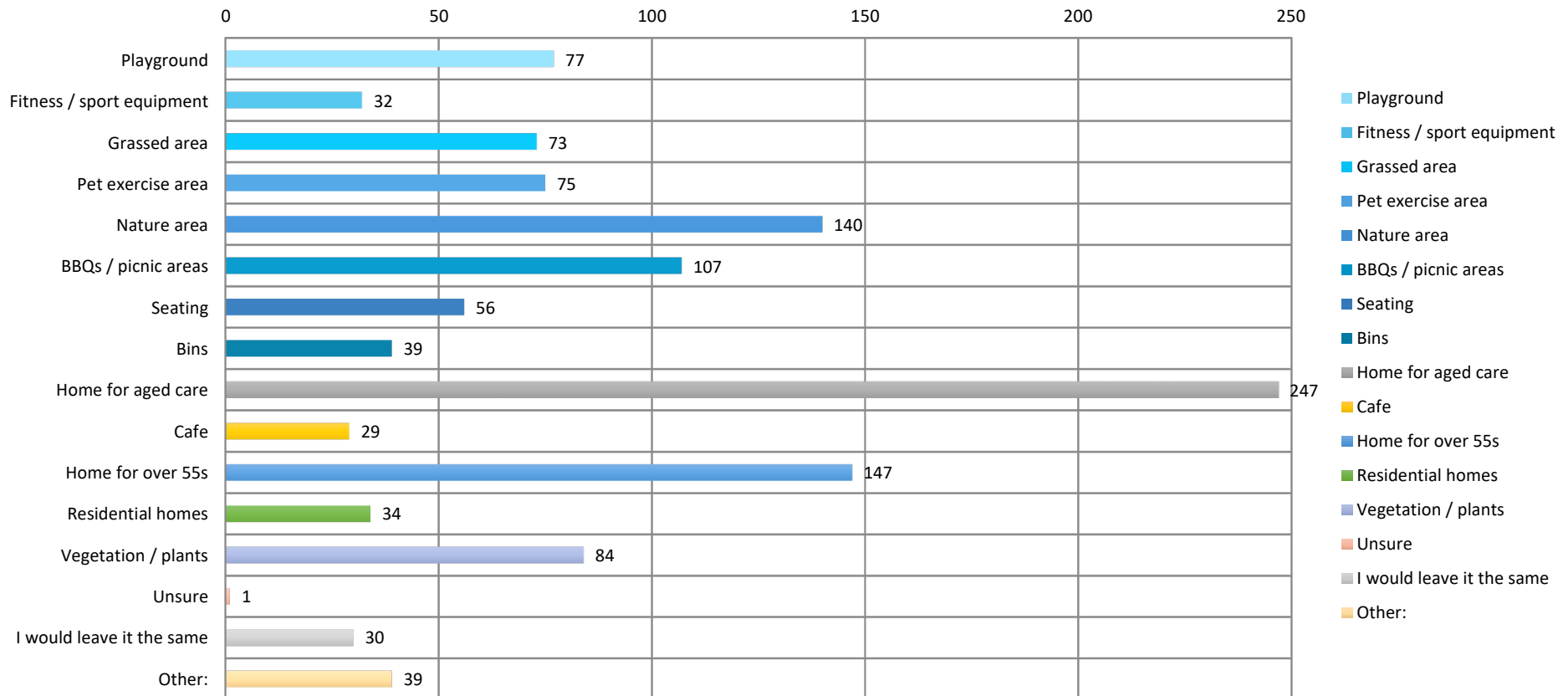
Do you think the space could be better utilised to meet the needs of the community?



What is most important to you when it comes to enhancing life in your community? (CHOOSE THREE)

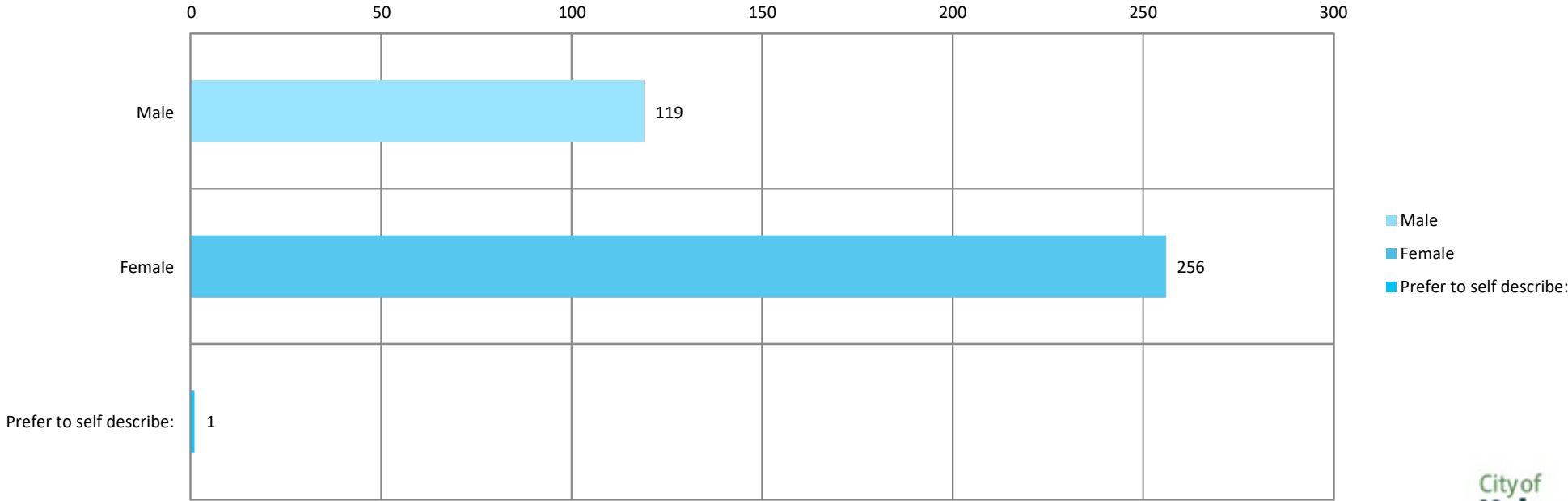


If you could transform this space, what elements would you incorporate to ensure use of this land meets the needs of everyone in our community?



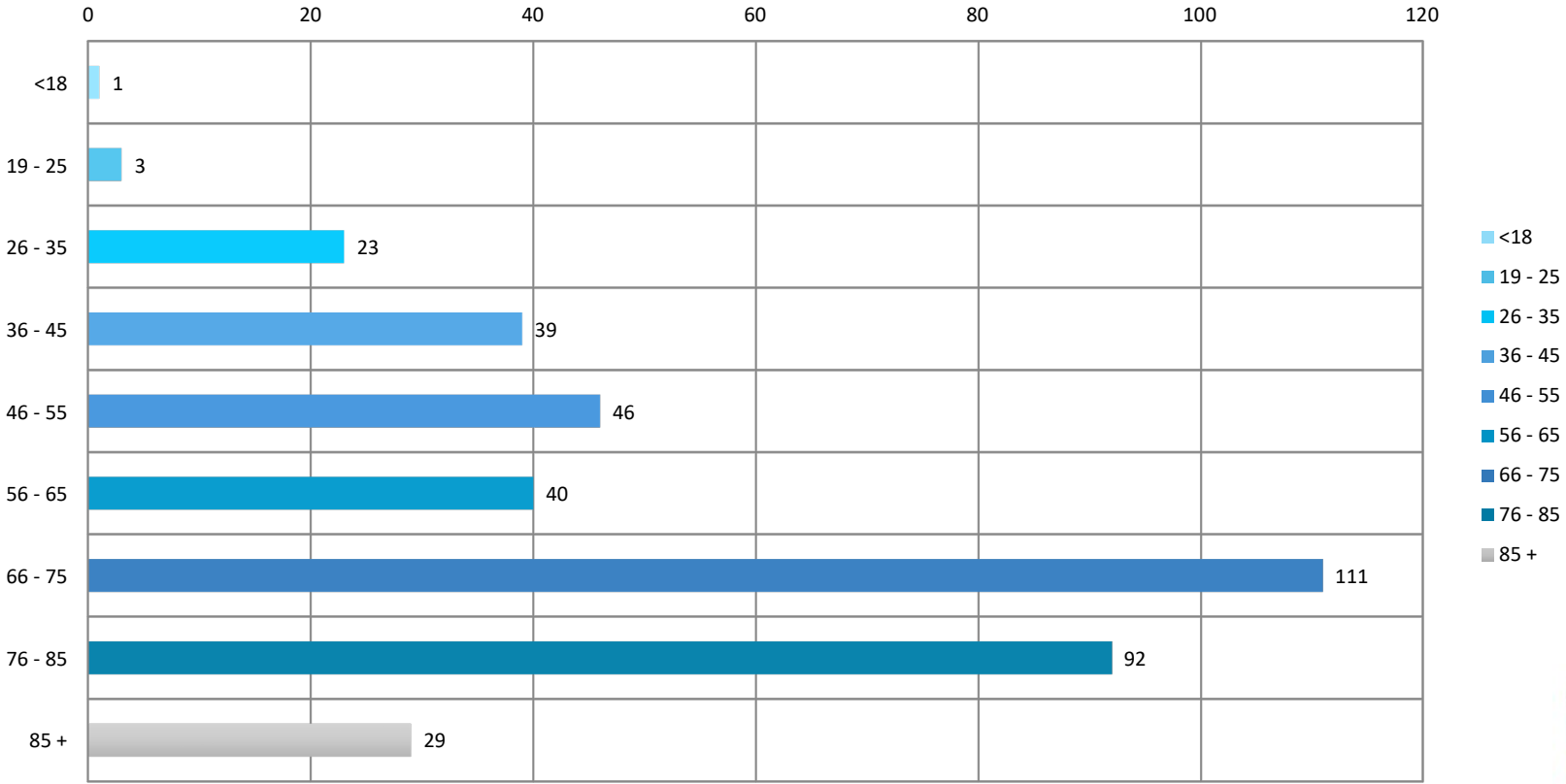


Gender:





Age:



Written Submissions

Community and stakeholders were provided the opportunity to share their feedback via a written submission. The City received seven (6) submissions from individuals (4) and organisations (2).

Four of the submissions suggested the site be used as an aged care facility. Two of these four suggested that the site also have facilities that can be used for all ages, such as a community garden or art space.

The remaining two submissions suggested the site be used for other purposes, like a peace park or enhanced community park.

Almost all (83%) of the submissions stressed the importance of retaining trees and the site's natural feel.



Conclusion

Community consultation has highlighted that there is strong support for the park to be reviewed and enhanced to better meet the needs of the community.

These needs, according to the majority of the engaged participants include:

- An aged care facility
- An integrated area for all ages and community members
- Retention of nature, trees and vegetation.

There are a small number of engaged participants who do not envisage an aged care facility for the future of the park.