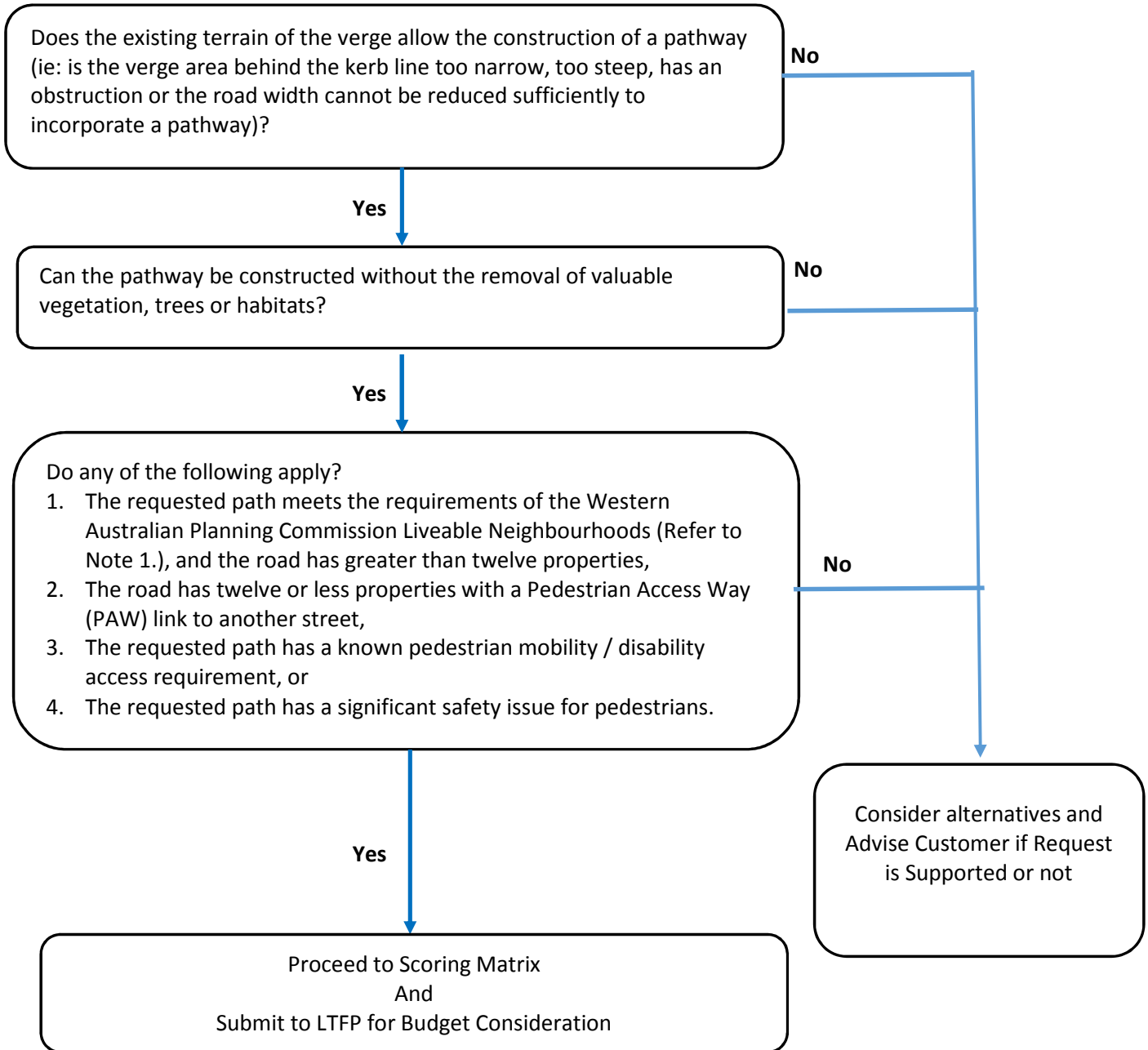


# New Pedestrian Path Decision Process



The following process is to be used to determine if a request for a new pathway meets the minimum requirements. Requests that meet the minimum requirements will be scored using the attached Paths Scoring Matrix, and then prioritised for future budget consideration.



**Notes:**

1. The Western Australian Planning Commission Liveable Neighbourhoods 2015 – “Section 1.5 Pedestrian Requirements being a pathway on at least one side of a local access street and a pathway or shared path on both sides of Integrator arterials and local access streets where pedestrian and cyclist activity is high (eg: where the street forms part of a designated pedestrian or cycling network and connects to schools, centres and stations).”
2. Requests for Cycling and Major Shared Pathway Facilities will be considered in the delivery of the City of Kalamunda Bicycle Pan 2017.
3. If the request is related to a specific pedestrian crossing or facility location, the request will be assessed using the Austroads Pedestrian Facility Selection Tool. The selection tool is to assist in the selection of an appropriate pedestrian crossing facility / treatment for a certain location.