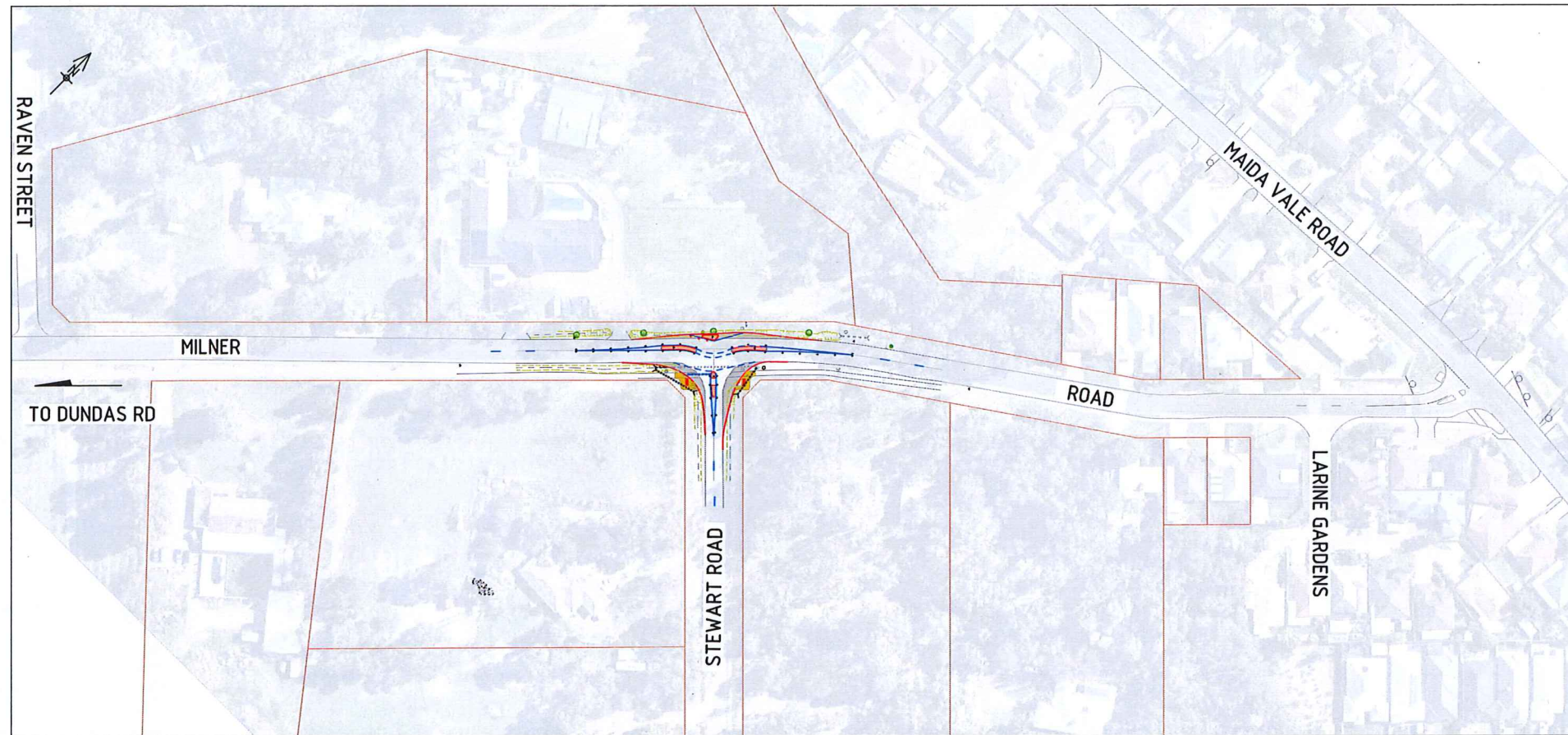
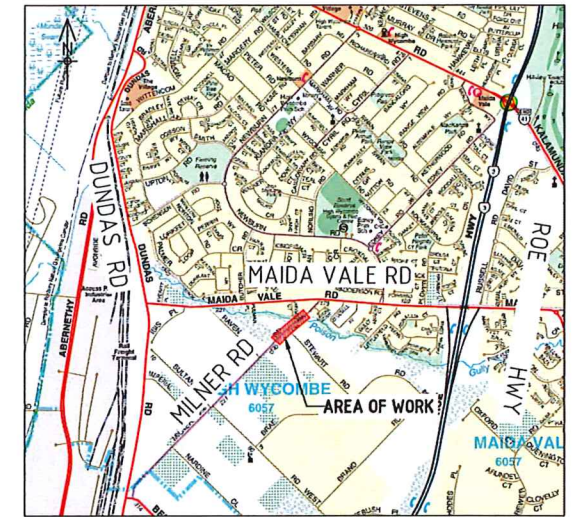


4296-01-01/0



PLAN



LOCALITY PLAN
N.T.S.

NOTES:

- 1. CADASTRAL INFORMATION APPROXIMATE ONLY.

LEGEND

EXISTING		PROPOSED
	SINGLE POST SIGN	
	DOUBLE POST SIGN	
	STREET LIGHT POLE	
	OVERHEAD POWER POLE	
	TREES	
	DRAIN	
	HEAD WALL AND DRAIN PIPE	



WARNING
SERVICES AND CADASTRAL BOUNDARY LOCATIONS ARE ONLY INDICATIVE AND MUST NOT BE USED FOR EXCAVATION. THE "ONE CALL 1100" SYSTEM SHALL BE USED TO OBTAIN ACCURATE SERVICE LOCATIONS.

Shire of Kalamunda **ASSET SERVICES**

MILNER RD / STEWART RD
INTERSECTION TRAFFIC SLOWPOINT TREATMENT
KALAMUNDA

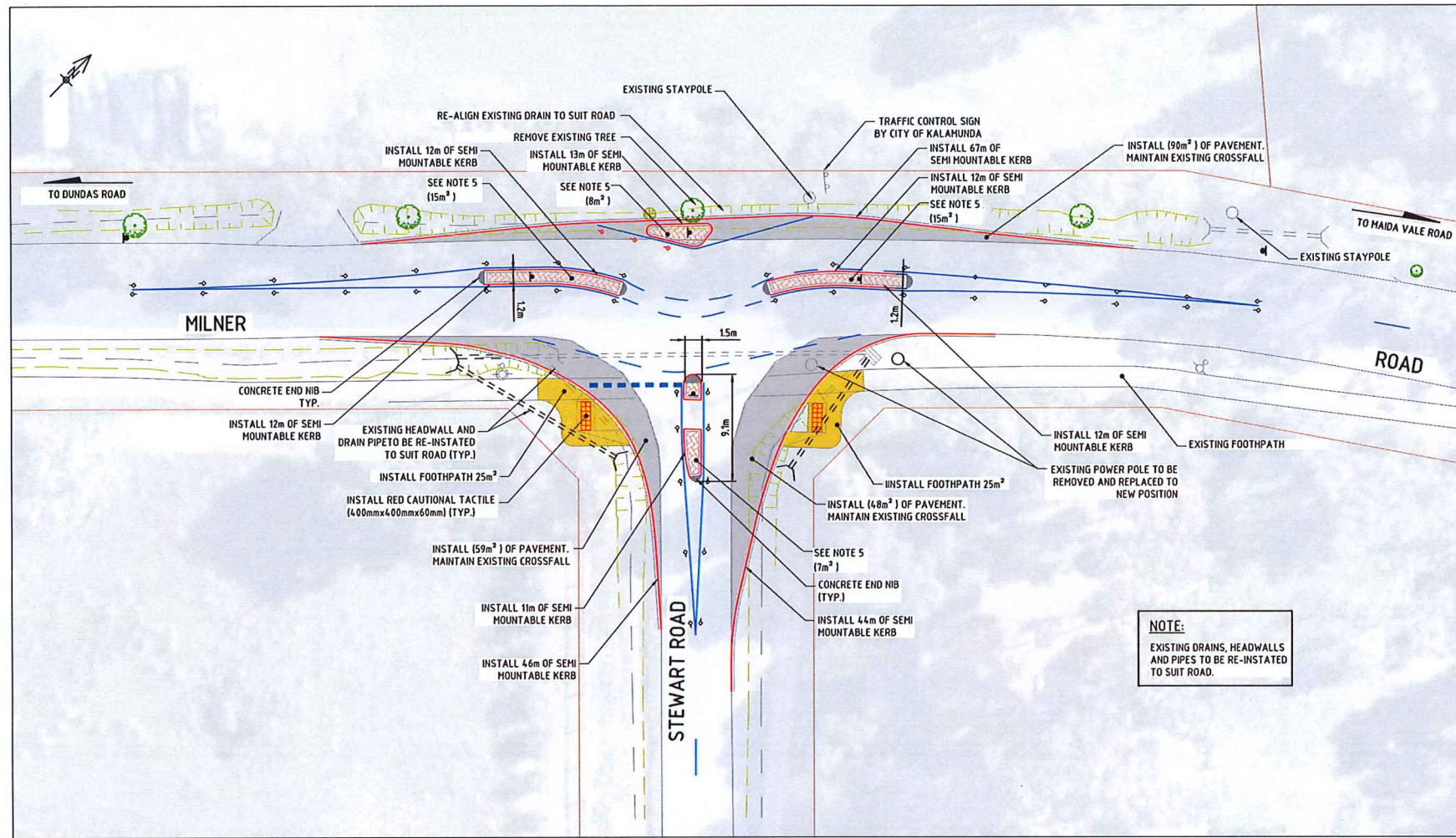
GENERAL ARRANGEMENT

DRAWING-No. -SHEET /REVISION ORIGINAL DWG. SIZE

4296-01-01/0 **A1**

REVISION				REVISION				SCALE		SUBMITTED		DRAWN		AUTHORISED		DESIGNED		APPROVED	
No.	BY	DATE	AUTH	No.	BY	DATE	AUTH	1:1000	SCALE IN METRES	DATE	BY	DATE	BY	DATE	DATE	BY	DATE	DATE	DATE
0	SO	01/10/18									G.SHEWA	27/09/18	S.DOSS	27/09/18	R.KORENHOF	03/10/18			
											ENGINEERING SUPERVISOR		PROJECT DESIGN OFFICER		MANAGER ASSET DELIVERY				
											S.DOSS	27/09/18	L.PUDHOTA	01/10/18	B.JACKSON	03/10/18			
											PROJECT DESIGN OFFICER		COORDINATOR PROJECT DESIGN		DIRECTOR ASSET SERVICES				

4296-01-02/0



PLAN

NOTES:

CONSTRUCTION NOTES:

1. CADASTRAL INFORMATION APPROXIMATE ONLY.
2. SERVICE LOCATIONS DIAGRAMMATIC ONLY. CONTACT SERVICE AUTHORITIES FOR EXACT IN GROUND LOCATIONS.
3. KERBING TO BE CONSTRUCTED IN ACCORDANCE WITH CITY OF KALAMUNDA STD DRG. RD01-01/1
4. ALL DISTURBANCES TO EXISTING VERGE RETICULATION AND TURFING TO BE REINSTATED.
5. RED FAUX BRICK PAVING TO BE 100mm THICK 32MPa IN HERRINGBONE PATTERN.

LEGEND:

- NEW PAVEMENT CONSTRUCTION
200mm LIMESTONE @ 95% MDD
65mm ROADBASE @ 98% MDD
38mm ASPHALT AC10
- NEW 100mm
CONCRETE FOOTPATH 32MPa
- BRICK PAVING 45° HERRINGBONE
'FEDERATION RED' WITH HEADER

EXISTING

PROPOSED

	KERBING (SEMI-MOUNTABLE)	
	KERBING (MOUNTABLE)	
	FOOTPATH (CONCRETE)	
	EDGE OF BITUMEN	
	CONTINUITY LINE	
	BROKEN SEPARATION LINE	
	UNIDIRECTIONAL YELLOW RRPMS	
	BI-DIRECTIONAL WHITE RRPMS	
	UNIDIRECTIONAL WHITE RRPMS	
	SINGLE POST SIGN	
	CADASTRE	
	STREET LIGHT POLE	
	OVERHEAD POWER POLE	
	TREES	
	DRAIN GRATE	
	DRAIN	
	HEAD WALL AND DRAIN PIPE	



WARNING
SERVICES AND CADASTRAL BOUNDARY LOCATIONS ARE ONLY INDICATIVE AND MUST NOT BE USED FOR EXCAVATION. THE "ONE CALL 1100" SYSTEM SHALL BE USED TO OBTAIN ACCURATE SERVICE LOCATIONS.

ASSET SERVICES

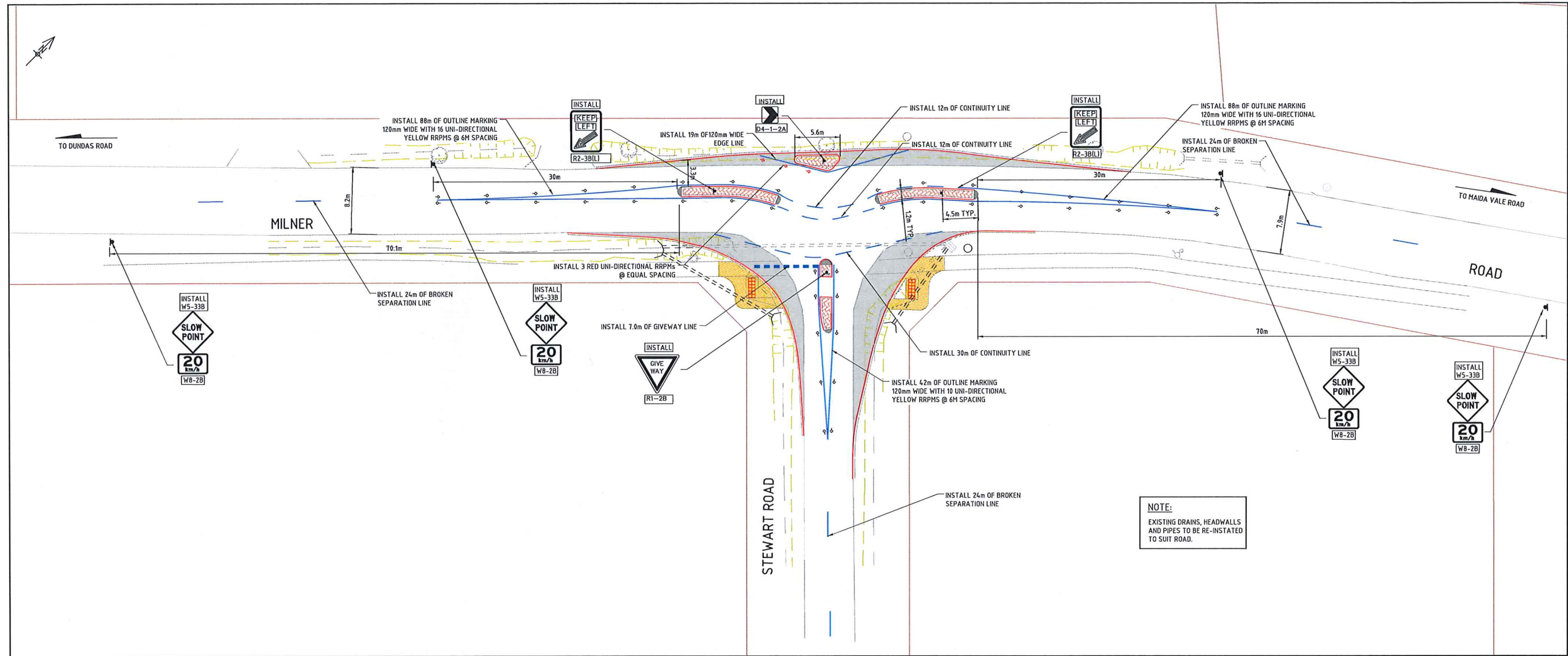
MILNER RD / STEWART RD

INTERSECTION TRAFFIC SLOWPOINT TREATMENT
KALAMUNDA

INTERSECTION SLOWPOINT TREATMENT PLAN

No.	REVISION	BY	DATE	AUTH	No.	REVISION	BY	DATE	AUTH	SCALE: 1:250	SURVEYED: G. SHEWA ENGINEERING SURVEYOR	DRAWN: S. DOSS PROJECT DESIGN OFFICER	APPROVED: R. KORENHOF MANAGER ASSET DELIVERY	DESIGNED: S. DOSS PROJECT DESIGN OFFICER	CHECKED: L. PUDHOTA COORDINATOR PROJECT DESIGN	APPROVED: B. JACKSON DIRECTOR ASSET SERVICES	Drawing No. CI	Structure Code 420	Drawing No. -SHEET /REVISION	ORIGINAL Dwg. SEE
0	ISSUED FOR APPROVAL	SD	01/10/18																4296-01-02/0	A1

4296-01-03/0



NOTE:
EXISTING DRAINS, HEADWALLS AND PIPES TO BE RE-INSTALLED TO SUIT ROAD.

PLAN

NOTES:

LINEMARKING NOTES:

- CADASTRAL INFORMATION APPROXIMATE ONLY.
- X DENOTES EXISTING LINE TO BE REMOVED BY THE CITY OF KALAMUNDA.
- ALL PAVEMENT LINEMARKING LINETYPES TO CONFORM WITH MRWA DRAWING NO 9931-0198-2 AND 200331-091.
- WHITE LINING AND SIGNAGE TO BE UNDERTAKEN BY MRWA OR ITS CONTRACTORS.
- ALL REDUNDANT LINEMARKING AND SIGNAGE TO BE REMOVED BY THE CITY OF KALAMUNDA

LEGEND:

EXISTING	PROPOSED
	EDGE OF BITUMEN
	CONTINUITY LINE
	BROKEN SEPARATION LINE
	EDGE LINE/OUTLINE MARKING
	UNIDIRECTIONAL YELLOW RRPMS
	BI-DIRECTIONAL WHITE RRPMS
	UNIDIRECTIONAL WHITE RRPMS
	SINGLE POST SIGN
	CADASTRE
	STREET LIGHT POLE
	OVERHEAD POWER POLE
	TREES
	DRAIN GRATE
	DRAIN
	HEAD WALL AND DRAIN PIPE

LEGEND:

	NEW PAVEMENT CONSTRUCTION 200mm LIMESTONE @ 95% MDD 65mm ROADBASE @ 98% MDD 30mm ASPHALT AC10
	NEW 100mm CONCRETE FOOTPATH 32MPa
	BRICK PAVING 65° HERRINGBONE 'FEDERATION RED' WITH HEADER
	EXISTING KERBING (SEMI-MOUNTABLE)
	EXISTING KERBING (MOUNTABLE)
	EXISTING FOOTPATH (CONCRETE)
	PROPOSED KERBING (SEMI-MOUNTABLE)
	PROPOSED KERBING (MOUNTABLE)
	PROPOSED FOOTPATH (CONCRETE)



WARNING
SERVICES AND CADASTRAL BOUNDARY LOCATIONS ARE ONLY INDICATIVE AND MUST NOT BE USED FOR EXCAVATION. THE "ONE CALL 1100" SYSTEM SHALL BE USED TO OBTAIN ACCURATE SERVICE LOCATIONS.

Shire of Kalamunda **ASSET SERVICES**

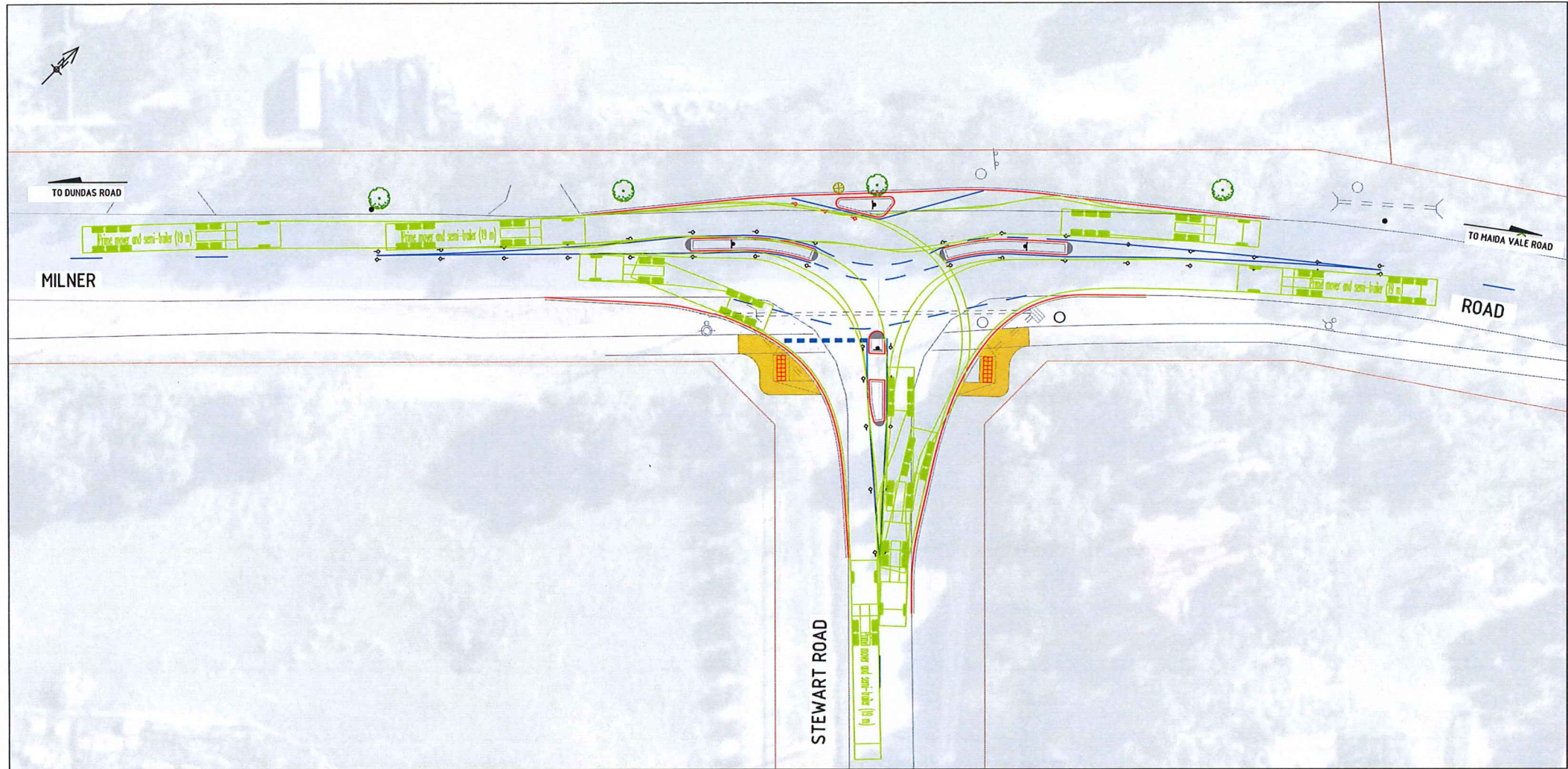
MILNER RD / STEWART RD
INTERSECTION TRAFFIC SLOWPOINT TREATMENT
KALAMUNDA

SIGNS AND LINE MARKING PLAN

DRAWING No. 4296-01-03/0 SHEET 1 OF 1 ORIGINAL DRG. SEE A1

NO.	REVISION	BY	DATE	AUTH	NO.	REVISION	BY	DATE	AUTH	SCALE	DATE	DESIGNED	CHECKED	APPROVED	DATE	DESIGNED	CHECKED	APPROVED	DATE	DISCIPLINE	STRUCTURE CODE
A	ISSUED FOR APPROVAL	SD	01/10/18							1:250		G. SHEWAN	S.DOSS	R. KORENHOF						CI	420

4296-01-04/0



PLAN

NOTES:

CONSTRUCTION NOTES:

1. CADASTRAL INFORMATION APPROXIMATE ONLY.
2. SERVICE LOCATIONS DIAGRAMMATIC ONLY. CONTACT SERVICE AUTHORITIES FOR EXACT IN GROUND LOCATIONS.
3. KERBING TO BE CONSTRUCTED IN ACCORDANCE WITH CITY OF KALAMUNDA STD DRG., RD01-01/1
4. ALL DISTURBANCES TO EXISTING VERGE RETICULATION AND TURFING TO BE REINSTATED.
5. RED FAUX BRICK PAVING TO BE 100mm THICK 32MPA IN HERRINGBONE PATTERN.

LEGEND:

- NEW PAVEMENT CONSTRUCTION
200mm LIMESTONE @ 95% MDD
65mm ROADBASE @ 98% MDD
30mm ASPHALT AC10
- NEW 100mm CONCRETE FOOTPATH 32MPa
- BRICK PAVING 45° HERRINGBONE 'FEDERATION RED' WITH HEADER

EXISTING		PROPOSED
	KERBING (SEMI-MOUNTABLE)	
	KERBING (MOUNTABLE)	
	FOOTPATH (CONCRETE)	
	EDGE OF BITUMEN	
	CONTINUITY LINE	
	BROKEN SEPARATION LINE	
	EDGE LINE/OUTLINE MARKING	
	UNIDIRECTIONAL YELLOW RRP'M'S	
	BI-DIRECTIONAL WHITE RRP'M'S	
	UNIDIRECTIONAL WHITE RRP'M'S	
	SINGLE POST SIGN	
	CADASTRE	
	STREET LIGHT POLE	
	OVERHEAD POWER POLE	
	TREES	
	DRAIN GRATE	
	DRAIN	
	HEAD WALL AND DRAIN PIPE	



WARNING
SERVICES AND CADASTRAL BOUNDARY LOCATIONS ARE ONLY INDICATIVE AND MUST NOT BE USED FOR EXCAVATION. THE "ONE CALL 1100" SYSTEM SHALL BE USED TO OBTAIN ACCURATE SERVICE LOCATIONS.

NOT FOR CONSTRUCTION

Shire of Kalamunda **ASSET SERVICES**

MILNER RD / STEWART RD
INTERSECTION TRAFFIC SLOWPOINT TREATMENT
KALAMUNDA

SLOWPOINT TURNING PATH PLAN

DRAWING No. - SHEET / REVISION ORIGINAL DRG. SIZE

4296-01-04/0 **A1**

REVISION				REVISION				REVISION				SCALE		SURVEYED		DRAWN		AUTHORISED		DISCIPLINE		STRUCTURE CODE	
No.	BY	DATE	AUTH	No.	BY	DATE	AUTH	No.	BY	DATE	AUTH	1:250	SCALE IN METRES	DATE	BY	DATE	BY	DATE	CI	420	420		
0	ISSUED FOR APPROVAL	01/10/18	SD																				