

Ordinary Council Meeting

Minutes for 24 October 2016

UNCONFIRMED



**shire of
kalamunda**

INDEX

1.0	OFFICIAL OPENING	6
2.0	ATTENDANCE, APOLOGIES AND LEAVE OF ABSENCE PREVIOUSLY APPROVED.....	6
3.0	PUBLIC QUESTION TIME.....	7
4.0	PETITIONS/DEPUTATIONS	8
5.0	APPLICATIONS FOR LEAVE OF ABSENCE	8
6.0	CONFIRMATION OF MINUTES OF PREVIOUS MEETING.....	8
7.0	ANNOUNCEMENTS BY THE PRESIDING MEMBER WITHOUT DISCUSSION.....	9
8.0	MATTERS FOR WHICH MEETING MAY BE CLOSED	9
9.0	DISCLOSURE OF INTERESTS.....	9
10.0	REPORTS TO COUNCIL.....	10
10.1	CORPORATE & COMMUNITY SERVICES COMMITTEE REPORT	10
10.1.1	ADOPTION OF CORPORATE & COMMUNITY SERVICES COMMITTEE REPORT	10
10.1.2	C&C 38 DRAFT YOUTH PLAN 2017-2022.....	10
10.1.3	C&C 39 POSITIVE AGEING PLAN	10
10.1.4	C&C 41 AGED ACCOMMODATION STRATEGY 2016	11
10.1.5	C&C 36. APPOINTMENT OF A COMMUNITY REPRESENTATIVE AND DEPUTY COMMUNITY REPRESENTATIVE TO KOSTERA OVAL ADVISORY COMMITTEE	11
10.1.6	C&C 37 TERMS OF REFERENCE AND APPOINTMENT OF COMMUNITY REPRESENTATIVES TO HARTFIELD PARK ADVISORY COMMITTEE.....	11
10.1.7	C&C 40 RAISING OF LOAN FOR THE PURCHASE OF A WASTE COMPACTOR UNIT	12
10.2	DEVELOPMENT & INFRASTRUCTURE SERVICES COMMITTEE REPORT	12
10.2.1	ADOPTION OF DEVELOPMENT & INFRASTRUCTURE SERVICES COMMITTEE REPORT	12
10.2.2	D&I 57 PROPOSED TELECOMMUNICATIONS MOBILE PHONE BASE STATION AND ANCILLARY EQUIPMENT – LOT 116 (52) ASHURST ROAD, LESMURDIE	13
10.2.3	D&I 56 REVIEW OF TRAFFIC CALMING PROGRAM – SETTING OF PRIORITIES POLICY ENG13	14
10.3	CHIEF EXECUTIVE OFFICER REPORTS	15
10.3.1	DEBTORS AND CREDITORS REPORT FOR THE PERIOD ENDED 30 SEPTEMBER 2016	15
10.3.2	RATES DEBTORS REPORT FOR THE PERIOD ENDED 30 SEPTEMBER 2016.....	57
10.3.3	DRAFT MONTHLY FINANCIAL STATEMENTS TO 30 SEPTEMBER 2016.....	62
10.3.4	PROPOSED CARPORT TO A SINGLE HOUSE – LOT 226 (13) PALM TERRACE, FORRESTFIELD.....	73
10.3.5	No. 230 (LOT 11896) PICKERING BROOK ROAD, PICKERING BROOK – ACKNOWLEDGEMENT OF THE HISTORIC USE OF THE LAND.....	87
10.3.6	CONFIDENTIAL ITEM - CHIEF EXECUTIVE OFFICER'S PERFORMANCE REVIEW	94
11.0	MOTIONS OF WHICH PREVIOUS NOTICE HAS BEEN GIVEN.....	95
12.0	QUESTIONS BY MEMBERS WITHOUT NOTICE	98
13.0	QUESTIONS BY MEMBERS OF WHICH DUE NOTICE HAS BEEN GIVEN	101
14.0	URGENT BUSINESS APPROVED BY THE PRESIDING MEMBER OR BY DECISION.....	106
15.0	MEETING CLOSED TO THE PUBLIC.....	106
10.3.6	CONFIDENTIAL ITEM - CHIEF EXECUTIVE OFFICER'S PERFORMANCE REVIEW	107
16.0	CLOSURE.....	107

MINUTES

1.0 OFFICIAL OPENING

- 1.1 The Presiding Member opened the meeting at 6.30pm and welcomed Councillors, Staff and Members of the Public Gallery.

2.0 ATTENDANCE, APOLOGIES AND LEAVE OF ABSENCE PREVIOUSLY APPROVED

2.1 Attendance

Councillors

Andrew Waddell JP	(Shire President) (Presiding Member)	North West Ward
Sara Lohmeyer		North West Ward
Dylan O'Connor		North West Ward
Sue Bilich		North Ward
Tracy Destree		North Ward
Simon Di Rosso		North Ward
Michael Fernie		South East Ward
John Giardina		South East Ward
Geoff Stallard		South East Ward
Allan Morton		South West Ward
Noreen Townsend		South West Ward

Members of Staff

Rhonda Hardy	Chief Executive Officer
Natalie Martin Goode	Director Development Services
Dennis Blair	Director Asset Services
Gary Ticehurst	Director Corporate Services
Darrell Forrest	Manager Governance, Strategy & Legal Services
Carrie Parsons	Manager Public & Customer Relations
Kerry Fryers	Manager Community Care
Donna McPherson	Executive Research Officer to Chief Executive Officer
Nicole O'Neill	Public Relations Coordinator

Members of the Public 23

Members of the Press Nil

2.2 Apologies

Councillors

Brooke O'Donnell	South West Ward
------------------	-----------------

Staff

2.3 Leave of Absence Previously Approved Nil.

3.0 PUBLIC QUESTION TIME

A period of not less than 15 minutes is provided to allow questions from the gallery on matters relating to the functions of Council. For the purposes of Minuting, these questions and answers are summarised.

3.1 Tony Fowler, 10 Marine Way, Kalamunda – On behalf of Nature Reserve Preservation Group. (Questions from 27 September 2016)

- Q2. When did ownership of Lot 601 change hands and who are the current owners?
- A2. The ownership changed hands in May 2015. The current owners are Newform Enterprises Pty Ltd.
- Q5. Item 10.3.6, has any consideration been given to the Green Growth Plan within this policy?
- A5. The various planning proposals that will be submitted to support the development of the precinct around the Forrestfield Airport Link (FAL) will be assessed in line with Strategic Environmental Assessment currently being undertaken as part of the Green Growth Plan. The Shire is currently in detailed discussions with the Office of the Environmental Protection Authority (EPA) and Department of Planning (DoP) to ensure planning proposals to rezone the area appropriately deal with matters of national and state environmental significance.
- Q6. Who's responsibility will it be to monitor the EPA conditions?
- A6. The Shire will ensure the framework for dealing with EPA conditions and requirements is established through the planning process and preparation of Local Structure Plans and guidelines for the precincts around the FAL. Development proposals initiated by landowners will be required to demonstrate conformity with the environmental frameworks established through the Local Structure Planning and planning process generally.
- Q7. Who will be responsible for monitoring conditions if accepted by WAPC?
- A7. Development conditions are audited by the responsible department overseeing the implementation of the various conditions of approval.

3.2 Mr Kim Warr 20 Taylor Road, Kalamunda

- Q. Are all Councillors and Executives aware that other young people with disabilities still use the service because they are not involved with NDIS?
- Q. When was the Shire website relating to Access and Inclusion re written?
- Q. What is the problem with reinstating services under NDIS as they were prior to 1 July 2016?

- Q. Does the Shire of Kalamunda have an agenda for withdrawing services to our most vulnerable residents and blaming it on the NDIS?
- Q. If not, will the Shire provide sufficient staff for these clubs and reinstate the bus services so that the objectives and the participates in the NDIS plans are met and parents, guardians and carers can use NDIS funds without feeling they are committing fraud?
- Q. Can Councillors and Executives explain how we have arrived at this point and what prompted the changes?
- A. Questions taken on Notice.

3.3 Eugene McShane 18 Brady Road, Lesmurdie

- Q. When the Councillors and the Shire Executive office bearers re considering the plight the group of disable young participants find themselves in are you going to keep in mind the publicised vision and values of services, respect, diversity and ethics?
- A. Yes they will be considered in all decisions.

4.0 PETITIONS/DEPUTATIONS

4.1 Nil.

5.0 APPLICATIONS FOR LEAVE OF ABSENCE

5.1 Nil.

6.0 CONFIRMATION OF MINUTES OF PREVIOUS MEETING

6.1 RESOLVED OCM 164/2016

That the Minutes of the Ordinary Council Meeting held on 27 September 2016, as published and circulated, are confirmed as a true and accurate record of the proceedings, subject to the following amendment:-

Add to Item 12 the following additional question taken on notice:

"12.13 Contributions for road works (Cr Fernie)

- Q. Are we aware of what contributions other local governments will receive with regards to road networks with respect to the Forrestfield rail link?
- A. The Shire is aware that other local governments are receiving contributions towards road network upgrades associated with the Forrestfield Airport Link. Each local government has different considerations and reasons for the contributions. Each circumstance is assessed and negotiated on a case by case basis

with the Public Transport Authority, the Salini Impregilo Joint Venture and relevant the local government.”

Moved: **Cr Michael Fernie**

Seconded: **Cr John Giardina**

Vote: **CARRIED UNANIMOUSLY**

6.2 RESOLVED OCM 165/2016

That the Minutes of the Special Council Meeting held on 10 October 2016, as published and circulated, are confirmed as a true and accurate record of the proceedings.

Moved: **Cr Dylan O'Connor**

Seconded: **Cr Michael Fernie**

Vote: **CARRIED UNANIMOUSLY (11/0)**

7.0 ANNOUNCEMENTS BY THE PRESIDING MEMBER WITHOUT DISCUSSION

Nil.

8.0 MATTERS FOR WHICH MEETING MAY BE CLOSED

- 8.1 10.3.6 CONFIDENTIAL REPORT- Chief Executive Officer's Performance Review** (provided under separate cover)
Reason for Confidentiality – Local Government Act 1995: Section 5.23(2) (a), "a matter affecting an employee or employees".

9.0 DISCLOSURE OF INTERESTS

9.1 Disclosure of Financial and Proximity Interests

- a. Members must disclose the nature of their interest in matters to be discussed at the meeting. (Section 5.65 of the *Local Government Act 1995*.)
- b. Employees must disclose the nature of their interest in reports or advice when giving the report or advice to the meeting. (Section 5.70 of the *Local Government Act 1995*.)

- 9.1.1** The Chief Executive Officer declared a direct financial interest in item 10.3.6 as the report relates directly to her and her appointment as CEO.

- 9.1.2** Cr Bilich declared a proximity interest in item 11.1 as she owns a property on Canning Road where the proposed widening would occur.

9.2 Disclosure of Interest Affecting Impartiality

- a. Members and staff must disclose their interest in matters to be discussed at the meeting in respect of which the member or employee had given or will give advice.

9.1.2 Nil.

10.0 REPORTS TO COUNCIL

Please Note: declaration of financial/conflict of interests to be recorded prior to dealing with each item.

10.1 Corporate & Community Services Committee Report

10.1.1 Adoption of Corporate & Community Services Committee Report

Voting Requirements: Simple Majority

RESOLVED OCM 166/2016

That the recommendations C&C 38, C&C 39 and C&C 41 contained in the Corporate & Community Services Committee Report of 10 October 2016, be adopted by Council en bloc. Items C&C 36, C&C 37 and C&C 40 have been withdrawn for separate consideration.

Moved: **Cr Noreen Townsend**

Seconded: **Cr Sue Bilich**

Vote: **CARRIED UNANIMOUSLY (11/0)**

10.1.2 C&C 38 Draft Youth Plan 2017-2022

EN BLOC RESOLUTION OCM 166/2016

That Council:

1. Receives the Draft Youth Plan 2017-22 (Attachment 1) for the purpose of seeking public comment.

10.1.3 C&C 39 Positive Ageing Plan

EN BLOC RESOLUTION OCM 166/2016

That Council:

1. Endorses the Draft Positive Ageing Plan 2016 – 2020 (Attachment 1).

10.1.4 C&C 41 Aged Accommodation Strategy 2016

EN BLOC RESOLUTION OCM 166/2016

That Council:

1. Endorses the recommendations of the Shire of Kalamunda Aged Accommodation Strategy 2016 shown as Attachment 1.
2. Note the Kalamunda Aged Care Committee supports the recommendation of the Kalamunda Aged Care Accommodation Strategy 2016 subject to more clarification being provided to the Committee in relation to the Spoke and Hub model outlined in the report.

10.1.5 C&C 36. Appointment of a Community Representative and Deputy Community Representative to Kostera Oval Advisory Committee

RESOLVED OCM 167/2016

That Council:

1. Appoints the following nominees to the Kostera Oval Advisory Committee to represent Kalamunda Cricket Club:-
 - Mr David Armstrong, as a member, and
 - Ms Lynda Rendell, as a Deputy member.

Moved: **Cr Sue Bilich**

Seconded: **Cr Noreen Townsend**

Vote: **CARRIED UNANIMOUSLY/ABSOLUTE MAJORITY (11/0)**

10.1.6 C&C 37 Terms of Reference and Appointment of Community Representatives to Hartfield Park Advisory Committee

RESOLVED OCM 168/2016

That Council:

1. Pursuant to section 5.8 of the *Local Government Act 1995*, approves amendments to Clause 4.1 of the Terms of Reference for the Hartfield Park Advisory Committee to read:
 - 4.1 A total membership of up to eleven (11) members all of whom shall be appointed by Council. The term of appointment shall be up to two years; however, retiring members are eligible for re-nomination.
2. Appoints the following nominees to the Hartfield Park Advisory Committee to represent Forrestfield Little Athletics Club:-
 - Mr Brett Myles, as a member, and
 - Mrs Marcia Pringle, as a Deputy member.

Moved: **Cr Allan Morton**

Seconded: **Cr Geoff Stallard**

Vote: **CARRIED UNANIMOUSLY/ABSOLUTE MAJORITY
(11/0)**

10.1.7 C&C 40 Raising of Loan for the Purchase of a Waste Compactor Unit

RESOLVED OCM 169/2016

That Council:

1. Pursuant to *S6.20 (2) of the Local Government Act 1995* approves the raising of a loan for \$206,510 over five years through the West Australian Treasury Corporation for the purpose of purchasing a Waste Compactor Unit.

Moved: **Cr Dylan O'Connor**

Seconded: **Cr Michael Fernie**

Vote: **CARRIED UNANIMOUSLY/ABSOLUTE MAJORITY
(11/0)**

10.2 Development & Infrastructure Services Committee Report

10.2.1 Adoption of Development & Infrastructure Services Committee Report

Voting Requirements: Simple Majority

That recommendation D&I 57, contained in the Development & Infrastructure Services Committee Report of 10 October 2016, be adopted by Council. Item D&I 56 has been withdrawn for separate consideration.

Moved:

Seconded:

Vote: **No Vote**

As there was only one item for consideration en bloc this matter was voted on separately.

10.2.2 D&I 57 Proposed Telecommunications Mobile Phone Base Station and Ancillary Equipment – Lot 116 (52) Ashurst Road, Lesmurdie

RESOLVED OCM 170/2016

That Council:

1. Recommend the Western Australian Planning Commission Approve the application for a telecommunications facility Lot 116 (52) Ashurst Drive, Lesmurdie, subject to the following conditions:
 - a) The development shall be carried out only in accordance with the terms of the application as approved herein, and any approved plan.
 - b) Measures shall be taken to ensure the identification and protection of any vegetation on the site worthy of retention prior to commencement of site work to the satisfaction of the Local Government.
 - c) Development works shall be carried out in accordance with AS 4970 2009 "Protection of Trees on Development Sites".
 - d) The building material colours shall match the monopole tower and be of a colour that blends and harmonises with the surrounding natural bushland to the satisfaction of the Local Government.
 - e) No building materials, rubbish or any other matter shall be deposited on the reserve after construction of the development is completed to the satisfaction of the Local Government.

Moved: **Cr Dylan O'Connor**

Seconded: **Cr Noreen Townsend**

Vote: For

**Cr Allan Morton
Cr Noreen Townsend
Cr Sara Lohmeyer
Cr Dylan O'Connor
Cr Simon Di Rosso
Cr Tracy Destree
Cr Andrew Waddell**

CARRIED (7/4)

Against

**Cr Michael Fernie
Cr John Giardina
Cr Geoff Stallard
Cr Sue Bilich**

10.2.3 D&I 56 Review of Traffic Calming Program – Setting of Priorities Policy ENG13

COMMITTEE RECOMMENDATION TO COUNCIL (D&I 56/2016)

That Council:

1. Notes the Traffic Treatments Assessment Policy as shown in Attachment 2.
2. Notes the Traffic Treatments Assessment Policy Management Procedure as shown in Attachment 3.

Moved:

Seconded:

Vote: **LAPSED**

RESOLVED OCM 171/2016

That Council:

1. Notes the Traffic Treatments Assessment Policy as shown in Attachment 2 with the following amendment.

Point 3 delete from Action Response column under 35 points "no further action required" and replace with "No treatments considered appropriate for this site. However all maintenance matters identified are to be actioned appropriately".
2. Notes the Traffic Treatments Assessment Policy Management Procedure as shown in Attachment 3.

Moved: **Cr Dylan O'Connor**

Seconded: **Cr Sue Bilich**

Vote: **CARRIED UNANIMOUSLY (11/0)**

10.3 CHIEF EXECUTIVE OFFICER REPORTS

Declaration of financial / conflict of interests to be recorded prior to dealing with each item.

10.3.1 Debtors and Creditors Report for the Period Ended 30 September 2016

Previous Items	N/A
Responsible Officer	Director Corporate and Community Services
Service Area	Finance
File Reference	FI-CRS-002
Applicant	N/A
Owner	N/A
Attachment 1	Creditors Payment Listing for the month of September 2016
Attachment 2	Summary of Debtors for the month of September 2016
Attachment 3	Summary of Creditors for the month of September 2016

PURPOSE

1. To receive the monthly report on creditors payment listings for the month of September 2016 (Attachment 1).
2. To receive the monthly report on debtors and creditors for the month of September 2016 (Attachment 2 and 3).

BACKGROUND

3. Council has requested reports detailing outstanding debtors and creditors on a monthly basis.

DETAILS

Debtors

4. Sundry debtors as of 30 September 2016 was \$1,048,303 of which \$165,253 was made up of current debtors and \$4,916 unallocated credits (excess or overpayments).
5. Invoices over 30 days total \$582,764.94, debts of significance are:
 - Code Group, \$5,712.90, building levy;
 - Kalamunda & Districts Junior Football \$1,738.54, operating expenses;
 - Sundance Transport, \$293,990.00, developer contribution; and
 - Terra Spei Pty Ltd, \$271,759.00, developer contribution.
6. Invoices over 60 days total \$12,867.98, debts of significance are:
 - Shire of Wandering, \$2,838.00, Planning Services.

7. Invoices over 90 days total \$292,332.58, debts of significance are:

- DA Letizia, \$258,930.49, developer contribution;
- Evolution Cheer & Dance, \$5,698.00, hall hire;
- Department of Education, \$4,198.97, operational expenses;
- Telstra Corporation, \$4,168.95, private works;
- Water Corporation, \$3,922.83, private works;
- Kalamunda Bulldogs Rugby, \$3,825.38, reserve hire;
- Kalamunda Cricket Club, \$2,855.73, operating expenses; and
- Beacon Homes PTY Ltd, \$2,525.05, private works.

Creditors

8. Payments totalling \$5,388,228.67 were made during the month of September 2016. Standard payment terms are 30 days from the end of the month, with local businesses and contractors on 14 day terms.

9. Significant Municipal payments made in the month were:

Supplier	Purpose	\$
Department of Fire and Emergency Services (DFES)	Emergency Services Levy – 1 quarter payment 2016/2017	1,798,826.40
Eastern Metropolitan Regional Council	Domestic Waste Collection Charges	390,109.69
Perth Waste Pty Ltd	Weekly collection and disposal of waste services	303,967.58
Australian Tax Office	PAYG payments	344,142.32
WA Hardwood Floors	Supply and install spring timber floor – Hartfield Park Recreation Centre	144,760.00
Beaver Tree Services	Tree removal and pruning – various locations	126,777.31
Synergy	Power charges – various sites including street lighting	118,194.95
WA Local Government Superannuation Plan	Superannuation contributions	293,260.34
Western Australian Treasury Corporation	Repayment of loan instalments – Loan 224 – 98,876.20 Loan 227 – 77,659.58 Loan 225 – 51,787.91 Loan 228 – 48,274.87	276,598.56

These payments total \$3,796,637.15 and represent 70.46% of all payments for the month.

Payroll

10. Salaries are paid in fortnightly cycles. A total of \$1,144,198.76 was paid in net salaries for the month of September 2016.
11. Details are provided in (Attachment 1) after the creditor's payment listing.

Trust Account Payments

12. The Trust Accounts maintained by the Shire relate to the following types:
- CELL 9 Trust
 - POS Trust
 - BCITF Levy
 - Building Licence Levy
 - Unclaimed Monies
13. The following payments were made from the Trust Accounts in the month of September 2016.

BCITF Levy		Amount (\$)
Date	Description	
5/9/2016	Building and Construction Industry – payment for September 2016	20,090.02
CELL 9		Amount (\$)
Date	Description	
8/9/2016	Porter Consulting Engineers – Arthur road roundabout and road extension project	11,000.00
22/9/2016	McLeods Barristers and Solicitors – Road land acquisition , lot 7(310) Hale Road, Wattle Grove	825.49
22/9/2016	McLeods Barristers and Solicitors – Road land acquisition , lot 7(310) Hale Road, Wattle Grove	1,415.99
22/9/2016	SYRINX – concept design, stage 1 start up and review report – Woodlupine living stream	18,208.96
Building Licence Levy		Amount (\$)
Date	Description	
30/09/2016	Building Commission – Building Levy September 2016	14,530.81

STATUTORY AND LEGAL CONSIDERATIONS

14. In accordance with the requirements of the *Local Government (Financial Management) Regulations 1996 (Regulation 13)* a list of accounts paid by the Chief Executive Officer is to be prepared each month and presented in the manner required as per the Regulation.

POLICY CONSIDERATIONS

15. Nil.

COMMUNITY ENGAGEMENT REQUIREMENTS

16. Nil.

FINANCIAL CONSIDERATIONS

17. The Shire will continue to closely manage debtors and creditors to ensure optimal cash flow management.

STRATEGIC COMMUNITY PLAN

Strategic Planning Alignment

18. *Kalamunda Advancing: Strategic Community Plan to 2023*
OBJECTIVE 6.8 - To ensure financial sustainability through the implementation of effective financial management, systems and plans.
Strategy 6.8.4 Provide effective financial services to support the Shire's operations and to meet sustainability planning, reporting and accountability requirements.

SUSTAINABILITY

Social Implications

19. Nil.

Economic Implications

20. Nil.

Environmental Implications

21. Nil.

RISK MANAGEMENT CONSIDERATIONS

Debtors

- 22.
- | Risk | Likelihood | Consequence | Rating | Action/Strategy |
|---|------------|-------------|--------|--|
| The Shire is exposed to the potential risk of the debtor failing to make payments resulting in the disruption of cash flow. | Possible | Minor | Medium | Ensure debt collections is rigorously managed. |

Creditors

23.	Risk	Likelihood	Consequence	Rating	Action/Strategy
	Adverse credit records due to the Shire defaulting on creditor.	Possible	Minor	Medium	Ensure all disputes are resolved in a timely manner.

OFFICER COMMENT

24. Creditor payments for September 2016 are now in the normal range in line with trend expenditure.

Voting Requirements: Simple Majority

RESOLVED OCM 172/2016

That Council:

1. Receives the list of payments made from the Municipal Accounts in September 2016 (Attachment 1) in accordance with the requirements of the *Local Government (Financial Management) Regulations 1996 (Regulation 12)*.
2. Receives the list of payments made from the Trust Accounts in September 2016 as noted in point 13 above in accordance with the requirements of the *Local Government (Financial Management) Regulations 1996 (Regulation 12)*.
3. Receives the outstanding debtors and creditors (Attachment 2 and 3) reports for the month of September 2016.

Moved: **Cr Dylan O'Connor**

Seconded: **Cr Geoff Stallard**

Vote: **CARRIED UNANIMOUSLY (11/0)**

Cr O'Connor queries EFT 52060 Worley Parsons. Taken on Notice

Attachment 1

Chq/EFT	Date	Name	Description	Amount
1005	31/08/2016	WA LOCAL GOVERNMENT SUPERANNUATION PLAN	SUPERANNUATION CONTRIBUTIONS	99246.08
1006	02/09/2016	LES MILLS ASIA PACIFIC INDUSTRIES	MONTHLY LICENCE FEE	1248.00
1007	07/09/2016	WESTERN AUSTRALIAN TREASURY CORPORATION	LOAN NO.225 FIXED COMPONENT	51787.91
1008	07/09/2016	AUSTRALIAN TAXATION OFFICE	TAXATION	170629.69
1009	08/09/2016	FLEETCARE PTY LTD	STAFF CONTRIBUTIONS TO NOVATED / OPERATING LEASING	8666.23
1010	08/09/2016	COMMONWEALTH BANK - BUSINESS CARD	BUSINESS CORPORATE CARD - VARIOUS COSTS HACC ACTIVITY OFFICER - \$375.00 HACC ACTIVITY OFFICER - \$656.74 LIBRARY SERVICES TEAM LEADER - \$1861.44 HACC ACTIVITY OFFICER - \$405.84 HACC ACTIVITY OFFICER - \$70.90 FUNCTIONS CO-ORDINATOR - \$5759.03 PROCUREMENT CO-ORDINATOR - \$149.00 HACC ACTIVITY OFFICER - \$132.00 HACC ACTIVITY OFFICER - \$864.00 BUILDING MAINTENANCE OFFICER - \$126.97 MANAGER HR - \$4288.17 PROCUREMENT & FINANCE OFFICER - \$4070.59	18759.68
1011	09/09/2016	WESTERN AUSTRALIAN TREASURY CORPORATION	LOAN NO.207 INTEREST PAYMENT	1136.11
1012	13/09/2016	IINET TECHNOLOGIES PTY LTD	INTERNET ACCESS	451.75
1013	14/09/2016	WESTERN AUSTRALIAN TREASURY CORPORATION	LOAN NO.199 INTEREST PAYMENT	2877.22
1014	15/09/2016	WESTERN AUSTRALIAN TREASURY CORPORATION	LOAN NO. 227 FIXED COMPONENT	77659.58
1015	15/09/2016	WESTERN AUSTRALIAN TREASURY CORPORATION	LOAN NO. 228 FIXED COMPONENT	48274.87
1016	20/09/2016	WESTERN AUSTRALIAN TREASURY CORPORATION	LOAN NO. 224 FIXED COMPONENT	98876.20
1017	20/09/2016	SG FLEET AUSTRALIA PTY LTD	MONTHLY LEASE FEES	3824.03
1018	21/09/2016	AUSTRALIAN TAXATION OFFICE	TAXATION	173512.63
EFT51270	30/08/2016	CHRISTOPHER HEWITT	HALL BOND REFUND	900.00
EFT51271	08/09/2016	KALAMUNDA ACCIDENT REPAIR CENTRE	INSURANCE EXCESS FOR REPAIRS TO VEHICLE	762.80
EFT51272	08/09/2016	TERRY BUCHAN	2016 RATES INCENTIVE PRIZE WINNER	1000.00

Chq/EFT	Date	Name	Description	Amount
EFT51273	08/09/2016	WEX AUSTRALIA PTY LTD - WRIGHT EXPRESS FUEL CARDS AUSTRALIA LTD	FUEL - PERIOD ENDING 5 SEPTEMBER 2016	3623.27
EFT51274	08/09/2016	PLE COMPUTERS	COMPUTER SUPPLIES	4375.00
EFT51275	08/09/2016	NEVERFAIL SPRINGWATER LTD (KALA LIB)	BOTTLED WATER SUPPLIES / MAINTENANCE	37.85
EFT51276	08/09/2016	BRIONY STEWART	CHILDREN'S BOOK WEEK SESSIONS @ HIGH WYCOMBE, FORRESTFIELD LIBRARY AND FALLS ROAD PRIMARY SCHOOL	600.00
EFT51277	08/09/2016	PAUL'S BUS COMPANY PTY LTD	PARK AND RIDE BUS - GRAN FONDO BIKE EVENT	1430.00
EFT51278	08/09/2016	OLK & ASSOCIATES	ARCHITECTURAL CONSULTING SERVICES	7568.00
EFT51279	08/09/2016	APOSTLE NATURAL SPRING WATER	DRINKING WATER DISPENSER AND CUP SUPPLIES FOR ZIG ZAG CULTURAL CENTRE	40.00
EFT51280	08/09/2016	PICTON PRESS	PRINTING OF BROCHURES FOR VARIOUS EVENTS & BUDGET OVERVIEW	8603.60
EFT51281	08/09/2016	SYRINX ENVIRONMENTAL P/L	WEED CONTROL AT VARIOUS LOCATIONS	2227.50
EFT51282	08/09/2016	ALL EARTH GROUP PTY LTD	DISPOSAL OF ROAD SWEEPINGS	78176.56
EFT51283	08/09/2016	VIP CARPET AND UPHOLSTERY CLEANING SERVICE	CARPET CLEANING AT VARIOUS LOCATIONS	865.00
EFT51284	08/09/2016	SEAMLESS (AUST) PTY LTD	MAINTENANCE AND SUPPORT OCT 2015 - MID FEB 2016 & IT SOFTWARE AGREEMENT	5726.60
EFT51285	08/09/2016	WENDY ANNE PEARCE	CONSIGNMENT SUPPLIER - ZIG ZAG CULTURAL CENTRE - 01/08/16 - 31/08/16	28.00
EFT51286	08/09/2016	ANTHONY BOLGIA	RATES REFUND	1039.00
EFT51287	08/09/2016	RONNIE MALTHOUSE	TRAVEL COMMUNITY VISITORS SCHEME REFUND	38.00
EFT51288	08/09/2016	FRANK JOHN GODDE	CROSSOVER CONTRIBUTION	420.00
EFT51289	08/09/2016	DAPHNE LEMKE	TRAVEL COMMUNITY VISITORS SCHEME REFUND	37.50
EFT51290	08/09/2016	BENJAMIN THACKRAY	TRAVEL COMMUNITY VISITORS SCHEME REFUND	170.00
EFT51291	08/09/2016	BRUCE COWEN	CONSIGNMENT SUPPLIER - ZIG ZAG CULTURAL CENTRE - 01/08/16 - 31/08/16	276.50
EFT51292	08/09/2016	GILL BAXTER	CONSIGNMENT SUPPLIER - ZIG ZAG CULTURAL CENTRE - 01/08/16 - 31/08/16	31.50
EFT51293	08/09/2016	MICHAEL J HOSKING	2016 RATES INCENTIVE PRIZE WINNER	1000.00
EFT51294	08/09/2016	CAROLYN CURRIE	FOOTPATH DEPOSIT REFUND	1550.00

Chq/EFT	Date	Name	Description	Amount
EFT51295	08/09/2016	SHIRE OF KALAMUNDA STAFF SOCIAL CLUB	PAYROLL DEDUCTIONS	354.00
EFT51296	08/09/2016	CHILD SUPPORT AGENCY	PAYROLL DEDUCTIONS	644.58
EFT51297	08/09/2016	AUSTRALIA POST	POSTAL EXPENSES / COUNTER BILLPAY TRANSACTION FEES	15321.01
EFT51298	08/09/2016	BUNNINGS BUILDING SUPPLIES	HARDWARE SUPPLIES FOR VARIOUS LOCATIONS	820.68
EFT51299	08/09/2016	COVS PARTS PTY LTD	PLANT / VEHICLE PARTS	412.73
EFT51300	08/09/2016	WA LOCAL GOVERNMENT ASSOCIATION	REGISTRATION FOR STAFF TO ATTEND MANAGING CONTRACTS IN LOCAL GOVERNMENT COURSE	1490.00
EFT51301	08/09/2016	MCLEODS BARRISTERS & SOLICITORS	LEGAL EXPENSES	15176.20
EFT51302	08/09/2016	LANDGATE - VALUATIONS	VALUATIONS FOR VARIOUS LOCATIONS	1105.80
EFT51303	08/09/2016	WALKERS HARDWARE (MITRE 10)	HARDWARE SUPPLIES	405.29
EFT51304	08/09/2016	MCKAY EARTHMOVING PTY LTD	PLANT EQUIPMENT AND OPERATOR HIRE FOR VARIOUS LOCATIONS	24834.38
EFT51305	08/09/2016	BORAL CONSTRUCTION MATERIALS GROUP	ROAD MATERIALS FOR VARIOUS LOCATIONS	2633.13
EFT51306	08/09/2016	ZIPFORM PTY LTD	POSTAGE AND DELIVERY COST FOR RATE NOTICE RUN 2016/2017	34672.49
EFT51307	08/09/2016	DOMUS NURSERY	GARDEN SUPPLIES FOR VARIOUS LOCATIONS	797.12
EFT51308	08/09/2016	FASTA COURIERS	COURIER FEES	95.79
EFT51309	08/09/2016	THE WATERSHED WATER SYSTEMS	RETICULATION PARTS FOR VARIOUS RESERVES	1730.23
EFT51310	08/09/2016	SG ENVIRO	SEPTIC / GREASE TANK CLEAN OUT SERVICES AT VARIOUS LOCATIONS	590.00
EFT51311	08/09/2016	ALSCO LINEN SERVICE	LINEN HIRE / LAUNDRY SERVICES	635.19
EFT51312	08/09/2016	BRADOCK PODIATRY SERVICES PTY LTD	PODIATRY SERVICES AT JACK HEALEY CENTRE	1059.86
EFT51313	08/09/2016	LINDLEY CONTRACTING	PLUMBING REPAIRS / MAINTENANCE FOR VARIOUS LOCATIONS	3228.50
EFT51314	08/09/2016	KALA BOB KATS PTY LTD	PLANT EQUIPMENT AND OPERATOR HIRE FOR VARIOUS LOCATIONS	4406.25
EFT51315	08/09/2016	DEPARTMENT OF PREMIER & CABINET - STATE LAW PUBLISHER	GOVERNMENT GAZETTE ADVERTISING	999.40
EFT51316	08/09/2016	GRIMES CONTRACTING PTY LTD	CONTRACTOR BUILDING MAINTENANCE FOR VARIOUS BUILDINGS	7060.40

Chq/EFT	Date	Name	Description	Amount
EFT51317	08/09/2016	BGC ASPHALT	ROAD MATERIALS FOR VARIOUS LOCATIONS	322.30
EFT51318	08/09/2016	WESTSIDE FIRE SERVICES	TESTING AND INSPECTION OF FIRE EQUIPMENT / SUPPLIES	337.51
EFT51319	08/09/2016	MILPRO WA (INCORPORATING HILL TOP TROPHIES)	SUPPLY OF NAME BADGES	38.50
EFT51320	08/09/2016	FOODWORKS FRESH FORRESTFIELD	GROCERY SUPPLIES	759.06
EFT51321	08/09/2016	IT VISION AUSTRALIA PTY LTD	INDEX AUDIT CONSULTING	1375.00
EFT51322	08/09/2016	LO-GO APPOINTMENTS	HIRE OF TEMPORARY STAFF FOR DEPOT / ADMIN	7055.84
EFT51323	08/09/2016	STAFF AUSTRALIA	HIRE OF TEMPORARY STAFF FOR DEPOT / ADMIN	3949.26
EFT51324	08/09/2016	GREEN SKILLS (ECOJOBS)	LABOUR ASSISTANCE FOR TREE PLANTING	1138.50
EFT51325	08/09/2016	ZIG ZAG GRAPHICS AND PRINT	PRINTING OF SHIRE MAPS	360.00
EFT51326	08/09/2016	KALAMUNDA & DISTRICTS HISTORICAL SOCIETY	CONSIGNMENT SUPPLIER - ZIG ZAG CULTURAL CENTRE - 01/08/16 - 31/08/16	62.30
EFT51327	08/09/2016	KALAMUNDA CHRISTIAN SCHOOL	HALL AND KEY BOND REFUND	474.00
EFT51328	08/09/2016	DON RUSSELL HOMES PTY LTD	FOOTPATH DEPOSIT REFUND	2100.00
EFT51329	08/09/2016	CRABBS KALAMUNDA (IGA)	GROCERY SUPPLIES	486.42
EFT51330	08/09/2016	ROINA WILLIAMS T/A HUMAN TERRAINS	ANTHROPOLOGICAL CONSULTANCY	5940.00
EFT51331	08/09/2016	WATTLE GROVE VETERINARY HOSPITAL	VETERINARY FEES	410.00
EFT51332	08/09/2016	DAWSON'S GARDEN WORLD	PLANTS / GARDEN SUPPLIES	214.45
EFT51333	08/09/2016	HELEN ARMSTRONG & ASSOCIATES (T/AS WAXING LYRICAL CANDLES)	CONSIGNMENT SUPPLIER - ZIG ZAG CULTURAL CENTRE - 01/08/16 - 31/08/16	78.40
EFT51334	08/09/2016	COMMISSIONER OF POLICE	VOLUNTEER POLICE CHECKS	74.50
EFT51335	08/09/2016	SWAN EVENT HIRE	EQUIPMENT HIRE FOR VARIOUS EVENTS	1082.36
EFT51336	08/09/2016	LOCAL GOVERNMENT MANAGERS AUSTRALIA (WA DIVISION)	2016 -17 MEMBERSHIP FOR MANAGER COMMUNITY SAFETY & COMPLIANCE SERVICES	513.00
EFT51337	08/09/2016	DESKTOP MAPPING SYSTEMS PTY LTD T/A DIGITAL MAPPING SOLUTIONS	GIS CONSULTING SERVICES	35420.00
EFT51338	08/09/2016	BRADLEY J PETTITT	FOOTPATH DEPOSIT REFUND	1000.00
EFT51339	08/09/2016	ALCHEMY TECHNOLOGY	TRAINING COURSES FOR STAFF	1815.00
EFT51340	08/09/2016	ANNA HAMERSLEY	CONSIGNMENT SUPPLIER - ZIG ZAG CULTURAL CENTRE - 01/08/16 - 31/08/16	17.50

Chq/EFT	Date	Name	Description	Amount
EFT51341	08/09/2016	HILL TOP GROUP PTY	CONTRACTOR BUILDING MAINTENANCE FOR VARIOUS BUILDINGS	5764.03
EFT51342	08/09/2016	KEVREK (AUSTRALIA) PTY LTD	PLANT / VEHICLE PARTS	7700.00
EFT51343	08/09/2016	HAYS SPECIALIST RECRUITMENT (AUSTRALIA) PTY LTD	HIRE OF TEMPORARY STAFF FOR ADMIN / DEPOT	2755.10
EFT51344	08/09/2016	ENGIE MECHANICAL SERVICES AUSTRALIA PTY LTD	AIRCONDITIONING MAINTENANCE / REPAIRS FOR VARIOUS LOCATIONS	11492.40
EFT51345	08/09/2016	DEBBIE JOSE JEWELLERY	CONSIGNMENT SUPPLIER - ZIG ZAG CULTURAL CENTRE - 01/08/16 - 31/08/16	168.00
EFT51346	08/09/2016	KALAMUNDA CHAMBER OF COMMERCE INC	CONSIGNMENT SUPPLIEE - ZIG ZAG CULTURAL CENTRE - 01/08/16 - 31/08/16	3.85
EFT51347	08/09/2016	1ST KALAMUNDA SCOUT GROUP	KIDSPORT FUNDING FOR VARIOUS PLAYERS	640.00
EFT51348	08/09/2016	CHRISTOPHER JOHN SHEARN	CROSSOVER CONTRIBUTION	420.00
EFT51349	08/09/2016	KANYANA WILDLIFE REHABILITATION CENTRE INC	CONSIGNMENT SUPPLIER - ZIG ZAG CULTURAL CENTRE - 01/08/16 - 31/08/16	234.40
EFT51350	08/09/2016	KRISTIE MOILER	CONSIGNMENT SUPPLIER - ZIG ZAG CULTURAL CENTRE - 01/08/16 - 31/08/16	21.00
EFT51351	08/09/2016	PERRY ENVIRONMENTAL CONTRACTING	WEED CONTROL AT VARIOUS LOCATIONS	2084.50
EFT51352	08/09/2016	PETER CLARK - PIANO TUNER	MAINTENANCE / REPAIRS TO PIANOS IN VARIOUS SHIRE BUILDINGS	352.00
EFT51353	08/09/2016	FOOD TECHNOLOGY SERVICES PTY LTD	HIRE OF TEMPORARY STAFF FOR HEALTH DEPARTMENT	451.00
EFT51354	08/09/2016	SPORTS TURF ASSOCIATION (WA) INC	REGISTRATION FOR STAFF TO ATTEND CRICKET WICKET SEMINAR	385.00
EFT51355	08/09/2016	JAMES ARKLIE PICKERSGILL	2016 RATES INCENTIVE PRIZE WINNER	1000.00
EFT51356	08/09/2016	SPECIALISED SECURITY SHREDDING	SECURE DOCUMENT DISPOSAL BIN REMOVAL AND REPLACEMENT	33.00
EFT51357	08/09/2016	DONNA GAHAN	CONSIGNMENT SUPPLIER - ZIG ZAG CULTURAL CENTRE - 01/08/16 - 31/08/16	94.50
EFT51358	08/09/2016	JULIE ELIZABETH BAILEY	RATES REFUND	2017.48
EFT51359	08/09/2016	PORTER CONSULTING ENGINEERS	CONSULTING ENGINEERS FOR VARIOUS SHIRE PROJECTS	11000.00

Chq/EFT	Date	Name	Description	Amount
EFT51360	08/09/2016	PLANNING INSTITUTE AUSTRALIA	2016 -17 FULL MEMBERSHIP RENEWAL FOR STAFF MEMBER	599.00
EFT51361	08/09/2016	ELECTRICITY NETWORKS CORP T/A WESTERN POWER	WESTERN POWER SERVICE DESIGN AND INVESTIGATION	3850.00
EFT51362	08/09/2016	FORRESTFIELD TENNIS CLUB (INC)	FORRESTFIELD TENNIS CLUB HIRE FEES FROM HARTFIELD PARK RECREATION CENTRE - 01 AUGUST 2016 - 31 AUGUST 2016	28.80
EFT51363	08/09/2016	HILLIANS NETBALL CLUB	HALL AND KEY BOND REFUND	350.00
EFT51364	08/09/2016	KIM BAKER BALLET ACADEMY	HALL AND KEY BOND REFUND	455.00
EFT51365	08/09/2016	GLENDA DAWN CHARLTON (PODIATRY)	PODIATRY SERVICES AT JACK HEALEY CENTRE	1163.25
EFT51366	08/09/2016	ANNETTE RIBERI	KEY BOND REFUND	50.00
EFT51367	08/09/2016	CARA JOHNSON	HALL AND KEY BOND REFUND	350.00
EFT51368	08/09/2016	CASTLEDINE & CASTLEDINE DESIGNERS	DESIGN / ARTWORK & PRINTING OF VARIOUS ITEMS	450.00
EFT51369	08/09/2016	PRO-LAMPS PTY LTD	SUPPLY LIGHTING EQUIPMENT GLOBES AND SPARES	24.64
EFT51370	08/09/2016	LINDSEY HORKAN	HALL BOND REFUND	300.00
EFT51371	08/09/2016	ROMAN ANTONIUK	FOOTPATH DEPOSIT REFUND	950.00
EFT51372	08/09/2016	AGED & COMMUNITY SERVICES WA INC	AGED & COMMUNITY SERVICES MEMBERSHIP RENEWAL 2016 / 2017	3815.90
EFT51373	08/09/2016	ROAD SIGNS AUSTRALIA (ALLPACK SIGNS)	TRAFFIC PROTECTION PRODUCTS / SIGNAGE	312.84
EFT51374	08/09/2016	CHRISTINE STOCKMAN	2016 RATES INCENTIVE PRIZE WINNER	1000.00
EFT51375	08/09/2016	SHIRLEY SPENCER	CONSIGNMENT SUPPLIER - ZIG ZAG CULTURAL CENTRE - 01/08/16 - 31/08/16	30.10
EFT51376	08/09/2016	MULTILEC ENGINEERING	QUARTERLY SERVICING & TESTING OF LIFTS	379.50
EFT51377	08/09/2016	ROSE SMART	MAINTAIN ROSE BEDS AT VARIOUS LOCATIONS	5989.00
EFT51378	08/09/2016	BEST CONSULTANTS PTY LTD	ELECTRICAL CONSULTING SERVICES FOR VARIOUS LOCATIONS	2750.00
EFT51379	08/09/2016	RESIDENTIAL BUILDING WA PTY LTD	FOOTPATH DEPOSIT REFUND	1550.00
EFT51380	08/09/2016	DRAINFLOW SERVICES PTY LTD	CLEANING / MAINTAINING STORM WATER DRAINS	13728.00
EFT51381	08/09/2016	NEVERFAIL SPRINGWATER LTD (PETER ANDERTON CEN)	BOTTLED WATER SUPPLIES / MAINTENANCE	63.55

Chq/EFT	Date	Name	Description	Amount
EFT51382	08/09/2016	STATE WIDE TURF SERVICES	TURF SUPPLIES / MAINTENANCE FOR VARIOUS LOCATIONS	17671.50
EFT51383	08/09/2016	VANESSA ROBINSON (MCNAIR)	BUSHFIRE EXPO 2016 - BOUNCY CASTLE HIRE REIMBURSEMENT	250.00
EFT51384	08/09/2016	JORGE'S CONTRACTING SERVICES	CLEANING OF PETER ANDERTON CENTRE - 04/08/16 - 04/09/16	2397.01
EFT51385	08/09/2016	BENCHMARK MAINTENANCE SERVICES	CONTRACTOR BUILDING MAINTENANCE VARIOUS BUILDINGS	924.00
EFT51386	08/09/2016	CHRISTINE VITLER	CONSIGNMENT SUPPLIER - ZIG ZAG CULTURAL CENTRE - 01/08/16 - 31/08/16	3.15
EFT51387	08/09/2016	NANCY GILLESPIE	CONSIGNMENT SUPPLIER - ZIG ZAG CULTURAL CENTRE - 01/08/16 - 31/08/16	7.00
EFT51388	08/09/2016	BEAVER TREE SERVICES	TREE REMOVAL / PRUNING FOR VARIOUS LOCATIONS	1650.00
EFT51389	08/09/2016	WEST-SURE GROUP PTY LTD	CASH IN TRANSIT SERVICES - AUGUST 2016	1727.55
EFT51390	08/09/2016	CENTURION TEMPORARY FENCING	TEMPORARY FENCING HIRE	1148.13
EFT51391	08/09/2016	SEWING AND CRAFT WITH MEMA	SEWING AND CRAFT FOR YOUTH SERVICES	130.00
EFT51392	08/09/2016	SIMONE CAIN	REFUND OF 1.5HRS HALL HIRE DUE TO CANCELLATION	18.00
EFT51393	08/09/2016	KARIN HOTCHKIN	CONSIGNMENT SUPPLIER - ZIG ZAG CULTURAL CENTRE - 01/08/16 - 31/08/16	10.50
EFT51394	08/09/2016	DARRELL FORREST	REFUND OF EMPLOYMENT CONTRACT ALLOWANCE	513.00
EFT51395	08/09/2016	THE GOOD GUYS	ELECTRICAL SUPPLIES	355.00
EFT51396	08/09/2016	KALAMUNDA BULLDOGS RUGBY LEAGUE FOOTBALL CLUB	HALL AND KEY BOND REFUND	750.00
EFT51397	08/09/2016	SHILLER IMAGES (BELLART)	MERCHANDISE SUPPLIES FOR RESALE AT THE ZIG ZAG CULTURAL CENTRE	908.43
EFT51398	08/09/2016	CLAIRE O'NEILL - CLAIRE'S EMBROIDERY	CONSIGNMENT SUPPLIER - ZIG ZAG CULTURAL CENTRE - 01/08/16 - 31/08/16	71.40
EFT51399	08/09/2016	LINDA STONES	CONSIGNMENT SUPPLIER - ZIG ZAG CULTURAL CENTRE - 01/08/16 - 31/08/16	136.50

Chq/EFT	Date	Name	Description	Amount
EFT51400	08/09/2016	NATIONAL MEASUREMENT INSTITUTE	SAMPLE BOTTLES ANALYSIS - GREEN ARMY MONITORING, ANALYSIS FEES	607.20
EFT51401	08/09/2016	IAN MOSS	CONSIGNMENT SUPPLIER - ZIG ZAG CULTURAL CENTRE - 01/08/16 - 31/08/16	105.00
EFT51402	08/09/2016	WILD EYED PRESS	SUPPLY OF VARIOUS MERCHANDISE FOR RESALE AT THE ZIG ZAG CULTURAL CENTRE	1552.26
EFT51403	08/09/2016	CALLUM DONALD	FOOTPATH DEPOSIT REFUND	1000.00
EFT51404	08/09/2016	PETER FALCONER	CONSIGNMENT SUPPLIER - ZIG ZAG CULTURAL CENTRE - 01/08/16 - 31/08/16	16.80
EFT51405	08/09/2016	DEPARTMENT OF PLANNING OF OPERATING ACCOUNT (DAP)	HALE ROAD WATTLE GROVE - DEVELOPMENT ASSESSMENT PANEL FEE	3503.00
EFT51406	08/09/2016	SAFE T CARD AUSTRALIA PTY LTD	MONTHLY MONITORING CHARGES FOR VARIOUS LOCATIONS	33.00
EFT51407	08/09/2016	MARY FORWARD	CONSIGNMENT SUPPLIER - ZIG ZAG CULTURAL CENTRE - 01/08/16 - 31/08/16	7.00
EFT51408	08/09/2016	FOXTEL	MONTHLY SUBSCRIPTION FEE FOR RECREATION CENTRE	210.00
EFT51409	08/09/2016	HANS SCHWALB	CONSIGNMENT SUPPLIER - ZIG ZAG CULTURAL CENTRE - 01/08/16 - 31/08/16	7.00
EFT51410	08/09/2016	TANGOS NETBALL CLUB	KIDSPORT FUNDING FOR VARIOUS PLAYERS	1200.00
EFT51411	08/09/2016	KALAMUNDA ELECTRICS	ELECTRICAL REPAIRS / MAINTENANCE FOR VARIOUS LOCATIONS	10606.38
EFT51412	08/09/2016	THE ARTFUL FLOWE - FELICIA LOWE	CONSIGNMENT SUPPLIER - ZIG ZAG CULTURAL CENTRE - 01/08/16 - 31/08/16	16.10
EFT51413	08/09/2016	AAAC TOWING PTY LTD	TOWING SERVICES FEES	660.00
EFT51414	08/09/2016	RAJESH MALDE	REFUND OF EMPLOYMENT CONTRACT ALLOWANCE	862.80
EFT51415	08/09/2016	DAVID GREEN	CONSIGNMENT SUPPLIER - ZIG ZAG CULTURAL CENTRE - 01/08/16 - 31/08/16	69.65
EFT51416	08/09/2016	MAX OGRADY - PROJECT PHOTOGRAPHY	CONSIGNMENT SUPPLIER - ZIG ZAG CULTURAL CENTRE - 01/08/16 - 31/08/16	31.50
EFT51417	08/09/2016	CHE IMMELMAN	2016 RATES INCENTIVE PRIZE WINNER	1000.00

Chq/EFT	Date	Name	Description	Amount
EFT51418	08/09/2016	DMC CLEANING	CLEANING SERVICES / CONSUMABLES FOR VARIOUS LOCATIONS	2081.48
EFT51419	08/09/2016	NICHOLAS TAYLOR PHOTOGRAPHY	CONSIGNMENT SUPPLIER - ZIG ZAG CULTURAL CENTRE - 01/08/16 - 31/08/16	35.70
EFT51420	08/09/2016	SILK ON SILK (ROSEMARY LONSDALE)	CONSIGNMENT SUPPLIER - ZIG ZAG CULTURAL CENTRE - 01/08/16 - 31/08/16	294.00
EFT51421	08/09/2016	CUROST MILK SUPPLY	MILK SUPPLY FOR ADMINISTRATION CENTRE AND DEPOT	547.72
EFT51422	08/09/2016	MAVIS PASKULICH	CONSIGNMENT SUPPLIER - ZIG ZAG CULTURAL CENTRE - 01/08/16 - 31/08/16	150.50
EFT51423	08/09/2016	AVON HILLS ENVIRONMENTAL	WEED CONTROL SERVICES AT VARIOUS LOCATIONS	1155.00
EFT51424	08/09/2016	NICHOLAS ROUND	REIMBURSEMENT OF COSTS RELATING TO SHANDY - GRAFFITI WORKING DOG	570.00
EFT51425	08/09/2016	COB DESIGNS	CONSIGNMENT SUPPLIER - ZIG ZAG CULTURAL CENTRE - 01/08/16 - 31/08/16	84.70
EFT51426	08/09/2016	MPK TREE SERVICES	TREE REMOVAL / BRANCH PRUNING AT VARIOUS LOCATIONS	5148.70
EFT51427	08/09/2016	A1 TROJAN PEST CONTROL	PEST CONTROL SERVICES FOR VARIOUS LOCATIONS	5133.00
EFT51428	08/09/2016	FALLS ROAD NETBALL CLUB	HALL AND KEY BOND REFUND	350.00
EFT51429	08/09/2016	OFF PEN PUBLISHING - BETH BAKER	CONSIGNMENT SUPPLIER - ZIG ZAG CULTURAL CENTRE - 01/08/16 - 31/08/16	45.50
EFT51430	08/09/2016	STAN THE TYRE MAN (STAN'S TYRE SERVICE WA)	PLANT / VEHICLE PARTS	1303.50
EFT51431	08/09/2016	GOSNELLS POLICE & COMMUNITY YOUTH CENTRE (PCYC)	KIDSPORT FUNDING FOR VARIOUS PLAYERS	200.00
EFT51432	08/09/2016	ALLEASING PTY LTD	DATAKOM - IBM NETWORK STORAGE - PERIOD 01/10/16 - 31/12/16	43890.48
EFT51433	08/09/2016	MARIA CECILIA LESSA GIORDANI	FOOTPATH DEPOSIT REFUND	1500.00
EFT51434	08/09/2016	QUEENS PARK JUNIOR FOOTBALL CLUB	KIDSPORT FUNDING FOR VARIOUS PLAYERS	600.00
EFT51435	08/09/2016	GRAHAM STIMSON	CONSIGNMENT SUPPLIER - ZIG ZAG CULTURAL CENTRE - 01/08/16 - 31/08/16	176.40
EFT51436	08/09/2016	BALLIGART - HELEN LOCK	CONSIGNMENT SUPPLIER - ZIG ZAG CULTURAL CENTRE - 01/08/16 - 31/08/16	12.25

Chq/EFT	Date	Name	Description	Amount
EFT51437	08/09/2016	FLEETCARE PTY LTD	STAFF CONTRIBUTIONS TO NOVATED / OPERATING LEASING	11676.36
EFT51438	08/09/2016	LINDAS BOOKS / ROLEYSTONE COURIER	CONSIGNMENT SUPPLIER - ZIG ZAG CULTURAL CENTRE - 01/08/16 - 31/08/16	75.60
EFT51439	08/09/2016	IRENE YOUNG	CONSIGNMENT SUPPLIER - ZIG ZAG CULTURAL CENTRE - 01/08/16 - 31/08/16	39.90
EFT51440	08/09/2016	LINDA RAPHAEL	CONSIGNMENT SUPPLIER - ZIG ZAG CULTURAL CENTRE - 01/08/16 - 31/08/16	4.55
EFT51441	08/09/2016	WAITAWHILE ART	CONSIGNMENT SUPPLIER - ZIG ZAG CULTURAL CENTRE - 01/08/16 - 31/08/16	12.60
EFT51442	08/09/2016	RONALD PENDAL	VOLUNTEER TRANSPORT REIMBURSEMENT REFUND	24.00
EFT51443	08/09/2016	WORKPOWER INCORPORATED	WEED CONTROL AT VARIOUS LOCATIONS	638.00
EFT51444	08/09/2016	URBANECO GARDENS	HOME MAINTENANCE SERVICES	2650.00
EFT51445	08/09/2016	MOKOH DESIGN	MERCHANDISE FOR RESALE AT THE ZIG ZAG CULTURAL CENTRE	324.10
EFT51446	08/09/2016	NICKY WINTER - KASZAZZ IN KALAMUNDA	CONSIGNMENT SUPPLIER - ZIG ZAG CULTURAL CENTRE - 01/08/16 - 31/08/16	48.30
EFT51447	08/09/2016	RICHARD G AND CAROL C HANCOCK	BUILDING APPLICATION FEE REFUND	40.50
EFT51448	08/09/2016	PAULINE MANN	MERCHANDISE FOR RESALE AT THE ZIG ZAG CULTURAL CENTRE	622.50
EFT51449	08/09/2016	THE LUCKY CHARM	NEWSPAPERS / MAGAZINES SUPPLIES FOR VARIOUS LOCATIONS	44.49
EFT51450	08/09/2016	HERB & ESSENCE	CONSIGNMENT SUPPLIER - ZIG ZAG CULTURAL CENTRE - 01/08/16 - 31/08/16	13.65
EFT51451	08/09/2016	SPIDER WASTE COLLECTION SERVICES PTY LTD	COLLECTION AND RECYCLING OF MATTRESSES FROM WALLISTON TRANSFER STATION	1247.40
EFT51452	08/09/2016	SEATADVISOR PTY LTD	TICKET SALES FEE - AUGUST 2016	265.16
EFT51453	08/09/2016	GARY JOHN ROBINSON	RATES REFUND	869.45
EFT51454	08/09/2016	BLACKTREE TECHNOLOGY PTY LTD	RADIO ID & ACCESS TO THE CENTRAL PARK REPEATER SITE	255.20
EFT51455	08/09/2016	I.E. MARKETING	FREE LANCING MARKETING CONSULTING FEES	4000.00

Chq/EFT	Date	Name	Description	Amount
EFT51456	08/09/2016	VICTORIA MIZEN	CONSIGNMENT SUPPLIER - ZIG ZAG CULTURAL CENTRE - 01/08/16 - 31/08/16	23.66
EFT51457	08/09/2016	BREE SIMONE IMRIE	FOOTPATH DEPOSIT REFUND	2100.00
EFT51458	08/09/2016	THE COCOA PATCH	MERCHANDISE FOR RESALE AT THE ZIG ZAG CULTURAL CENTRE	208.00
EFT51459	08/09/2016	SECURE PAY	KPAC WEB PAYMENT, TICKET TRANSACTION FEES	15.58
EFT51460	08/09/2016	RUSTY ROO	MERCHANDISE FOR RESALE AT THE ZIG ZAG CULTURAL CENTRE	1076.75
EFT51461	08/09/2016	BICYCLE BARISTA	COFFEES AND HOT CHOCOLATES AT THE YOUTH ARTS FESTIVAL AT ZIG ZAG GALLERY - TEMPORARY FOOD STALL EVENT	217.00
EFT51462	08/09/2016	VIRTUE SECURITY SERVICES PTY LTD	SECURITY PERSONNEL FOR 'COMEDY GOLD' SHOW	184.80
EFT51463	08/09/2016	HELLO PERTH	ADVERTISING 2016/17 - FIFTH OF A PAGE - FOUR EDITIONS	1800.00
EFT51464	08/09/2016	ASTRALODGE MOTEL	ACCOMMODATION FOR 'COMEDY GOLD' PERFORMERS	405.00
EFT51465	08/09/2016	7TH HEAVEN VOCAL DUO	MORNING MUSIC PERFORMANCE 'LET'S HEAR IT FOR THE GIRLS' 7 SEPTEMBER 2016	400.00
EFT51466	08/09/2016	ACACIA CONNECTION PTY LTD	QUARTERLY EAP PROGRAM FIXED FEE FROM 01/10/16 TO 31/12/16	1595.00
EFT51467	08/09/2016	UNWINED T/A POSSUM CREEK LODGE	CONSIGNMENT SUPPLIER - ZIG ZAG CULTURAL CENTRE - 01/08/16 - 31/08/16	51.80
EFT51468	08/09/2016	SUSAN C CROSS	SALE OF ARTWORK - WATERCOLOUR WANDERINGS - EXHIBITIONS AND HALL BOND REFUND	7563.00
EFT51469	08/09/2016	TREASURES OF AUSTRALIA	CONSIGNMENT SUPPLIER - ZIG ZAG CULTURAL CENTRE - 01/08/16 - 31/08/16	48.93
EFT51470	08/09/2016	ALLCREDIT PTY LTD	STAFF CONTRIBUTIONS TO NOVATED / OPERATING LEASES	551.96
EFT51471	08/09/2016	SUZANNE CLAIRE SABAN	HALL BOND REFUND	300.00
EFT51472	08/09/2016	WA HARDWOOD FLOORS	SUPPLY AND INSTALLATION OF TIMBER FLOORS AT THE HARTFIELD PARK RECREATION CENTRE	144760.00
EFT51473	08/09/2016	CONTEMPORARY GYMNASTICS ACADEMY	KIDSPORT FUNDING FOR VARIOUS PLAYERS	400.00

Chq/EFT	Date	Name	Description	Amount
EFT51474	08/09/2016	SEAN AVERY	CHILDREN'S BOOK WEEK SESSIONS AT HIGH WYCOMBE, FORRESTFIELD, KALAMUNDA LIBRARY AND PICKERING BROOK PRIMARY SCHOOL	750.00
EFT51475	08/09/2016	CRISTY BURNE	CHILDREN'S BOOK WEEK SESSIONS AT VARIOUS LIBRARIES	600.00
EFT51476	08/09/2016	DAVINA BELL	CHILDREN'S BOOK WEEK SESSIONS AT VARIOUS LIBRARIES	600.00
EFT51477	08/09/2016	RIDGY DIDGE FOODS	GOODS FOR RESALE AT ZIG ZAG CULTURAL CENTRE	249.70
EFT51478	08/09/2016	EMBROIDERY HOUSE KALAMUNDA	EMBROIDERY AND PRINT DRIVER SUITS FOR SHIRE EVENT	273.00
EFT51479	08/09/2016	PADDY SWEENEY	MC DUTIES FOR TARGA WEST 2016	1000.00
EFT51480	08/09/2016	SEME SOLUTIONS PTY LTD	REPAIR OF INDIGO VISION NVR - IT REPAIRS & SUPPLIES	4427.28
EFT51481	08/09/2016	KOYA ABORIGINAL CORPORATION	KIDSPORT FUNDING FOR VARIOUS PLAYERS	440.00
EFT51482	08/09/2016	MARINI FERLAZZO	MERCHANDISE FOR RESALE AT THE ZIG ZAG CULTURAL CENTRE	356.40
EFT51483	08/09/2016	TAGNBAG PTY LTD - STUFFED WITH PLUSH TOYS	MERCHANDISE FOR RESALE AT THE ZIG ZAG CULTURAL CENTRE	1333.74
EFT51484	08/09/2016	PETER TOWNSEND	KEY BOND REFUND	50.00
EFT51485	08/09/2016	FREMANTLE POLICE & COMMUNITY YOUTH CENTRES (PCYC)	KIDSPORT FUNDING FOR VARIOUS PLAYERS	200.00
EFT51486	08/09/2016	DIAMONDBACKS SOFTBALL CLUB	KIDSPORT FUNDING FOR VARIOUS PLAYERS	390.00
EFT51487	08/09/2016	BITS OF AUSTRALIA	MERCHANDISE FOR RESALE AT THE ZIG ZAG CULTURAL CENTRE	365.20
EFT51488	08/09/2016	LITTLE MISS VINTAGE	THEMING OF SPECTATOR AREA FOR GRAN FONDO	775.00
EFT51489	08/09/2016	KAYAN NG	KEY BOND REFUND	50.00
EFT51490		EFT PAYMENT CANCELLED		
EFT51491		EFT PAYMENT CANCELLED		
EFT51492	15/09/2016	GL & EM POTTER	ADMIN FEE REFUND	15.00
EFT51493	15/09/2016	LEONE DOMENICO & JENNIFER FAYE CONTI	ADMIN FEE REFUND	15.00
EFT51494	15/09/2016	RAYMOND MILORAD BOYANICH	ADMIN FEE REFUND	15.00

Chq/EFT	Date	Name	Description	Amount
EFT51495	15/09/2016	BERNARD EDWARD & JEAN ELWYN THOMASON	ADMIN FEE REFUND	15.00
EFT51496	15/09/2016	ALBERT ALEXANDER CARSE	ADMIN FEE REFUND	15.00
EFT51497	15/09/2016	JAMES ROBERT & ERYNA HATCH	ADMIN FEE REFUND	15.00
EFT51498	15/09/2016	DOROTHY NITA GOULDEN	ADMIN FEE REFUND	15.00
EFT51499	15/09/2016	JANET ROSE DONNELLY	ADMIN FEE REFUND	15.00
EFT51500	15/09/2016	DAVID IAIN & HELEN EVELYN RYDER	ADMIN FEE REFUND	15.00
EFT51501	15/09/2016	DEBBIE JAYNE & PHILIP JOHN EDEN	ADMIN FEE REFUND	15.00
EFT51502	15/09/2016	GRAEME ROSS MARGARET GRACE MORRELL	ADMIN FEE REFUND	15.00
EFT51503	15/09/2016	DORIS EVELYN MYNORS	ADMIN FEE REFUND	15.00
EFT51504	15/09/2016	ARTHUR WILLIAM WEBSTER	ADMIN FEE REFUND	15.00
EFT51505	15/09/2016	MICHAEL BARRY CROWDER	ADMIN FEE REFUND	15.00
EFT51506	15/09/2016	DAVID IAN & MARION LESLEY SUTHERLAND	ADMIN FEE REFUND	15.00
EFT51507	15/09/2016	VICTOR FAZIOLI	ADMIN FEE REFUND	15.00
EFT51508	15/09/2016	FRANCIS JOHN & JOHANNA MARTHA VERNON	ADMIN FEE REFUND	15.00
EFT51509	15/09/2016	LYDIA KUPSKY & LAWRENCE TWIGG	ADMIN FEE REFUND	15.00
EFT51510	15/09/2016	DONALD MCKECHNIE	ADMIN FEE REFUND	15.00
EFT51511	15/09/2016	ALAN JOHN & CHRISTINE MARY DREVER	ADMIN FEE REFUND	15.00
EFT51512	15/09/2016	JOHN & JANET NELSON	RATES REFUND	303.00
EFT51513	15/09/2016	C & J MITCHELMORE	ADMIN FEE REFUND	15.00
EFT51514	15/09/2016	MARY CLAIRE FIRNS	ADMIN FEE REFUND	15.00
EFT51515	15/09/2016	PAUL WILLIAM & ELIZABETH MAY FALCONBRIDGE	ADMIN FEE REFUND	15.00
EFT51516	15/09/2016	KEITH LEONARD & WENDY LEE MORT	ADMIN FEE REFUND	15.00
EFT51517	15/09/2016	RICHARD & KATHLEEN SAWICKI	ADMIN FEE REFUND	15.00
EFT51518	15/09/2016	JUDITH HELEN MILLER	ADMIN FEE REFUND	15.00
EFT51519	15/09/2016	BEVERLEY JEAN WATSON	ADMIN FEE REFUND	15.00
EFT51520	15/09/2016	WILLIAM ROBERT & MARION PATRICIA HOWARD	ADMIN FEE REFUND	15.00
EFT51521	15/09/2016	NORMA JOYCE MOTTERAM	ADMIN FEE REFUND	15.00
EFT51522	15/09/2016	JOHN FREDERICK & ELIZABETH MARGARET BAILIFF	ADMIN FEE REFUND	15.00
EFT51523	15/09/2016	NORMA & MAXWELL JOHN WALSH	ADMIN FEE REFUND	15.00
EFT51524	15/09/2016	JAMES THOMAS & EILEEN ELIZABETH NOLAN	ADMIN FEE REFUND	15.00

Chq/EFT	Date	Name	Description	Amount
EFT51525	15/09/2016	ALAN & ELIZABETH COLE	ADMIN FEE REFUND	15.00
EFT51526	15/09/2016	BARRY NICHOLSON & PATRICIA ANNE BROADLEY	ADMIN FEE REFUND	15.00
EFT51527	15/09/2016	GERARD DOUGLAS & BETH ANNETTE GIBBS	ADMIN FEE REFUND	15.00
EFT51528	15/09/2016	ENRICO & RAMONA ALTINIER	ADMIN FEE REFUND	15.00
EFT51529	15/09/2016	CHRISTOPHER JOHN & JENNIFER ANNE LEWIS	ADMIN FEE REFUND	15.00
EFT51530	15/09/2016	BERNARD & KAY ARRANTASH	ADMIN FEE REFUND	15.00
EFT51531	15/09/2016	HENRY & SHIRLEY FOREMAN	ADMIN FEE REFUND	15.00
EFT51532	15/09/2016	BRUCE RIDLEY & JULITHA SAWYER	ADMIN FEE REFUND	15.00
EFT51533	15/09/2016	JAMES GILCHRIST	ADMIN FEE REFUND	15.00
EFT51534	15/09/2016	JOHN GRAEME & CORAL MARY PEPPER	ADMIN FEE REFUND	15.00
EFT51535	15/09/2016	TERENCE VERNON GARD	ADMIN FEE REFUND	15.00
EFT51536	15/09/2016	MICHAEL HOLLAND & SURANGANEE JEFFERSON	ADMIN FEE REFUND	15.00
EFT51537	15/09/2016	BRIAN CHRISTOPHER MOLLAN	ADMIN FEE REFUND	15.00
EFT51538	15/09/2016	LUIGI GINO & ROSALIND MARY CORSINI	ADMIN FEE REFUND	15.00
EFT51539	15/09/2016	ERICH ELFRIDA & CHRISTINE LORRAINE SMEULDERS	ADMIN FEE REFUND	15.00
EFT51540	15/09/2016	RAYMOND GORDON & SYLVIA MILICH	RATES REFUND	987.67
EFT51541	15/09/2016	DIRK & PATRICIA VAN DER PLAS	ADMIN FEE REFUND	15.00
EFT51542	15/09/2016	GRAHAM PAUL BUNTER & GLENDA MAY BUNTER	ADMIN FEE REFUND	15.00
EFT51543	15/09/2016	ISLA POTTER	ADMIN FEE REFUND	15.00
EFT51544	15/09/2016	MELISSA HASLAM	ADMIN FEE REFUND	15.00
EFT51545	15/09/2016	MICHAEL FREDERICK & HEATHER DAWN HOWELL	ADMIN FEE REFUND	15.00
EFT51546	15/09/2016	ANITA MARY & HENRY THOMAS WALKER	ADMIN FEE REFUND	15.00
EFT51547	15/09/2016	ATA & SAMIRI HOUSNI ILAHI	ADMIN FEE REFUND	38.00
EFT51548	15/09/2016	PETER ROBERT ANTONY & MARIA YOUNGS	ADMIN FEE REFUND	15.00
EFT51549	15/09/2016	ROBERT MICHAEL HUGHES	ADMIN FEE REFUND	15.00
EFT51550	15/09/2016	DARREN MURRAY & KIMBERLIE JONES	ADMIN FEE REFUND	15.00
EFT51551	15/09/2016	NATHAN CHARLES HINTON	ADMIN FEE REFUND	15.00
EFT51552	15/09/2016	HAMIDEH HAIDARI	ADMIN FEE REFUND	15.00
EFT51553	19/09/2016	DEPARTMENT OF FIRE AND EMERGENCY SERVICES (DFES)	2016/17 - EMERGENCY SERVICES LEVEL - QUARTER 1	1798826.40

Chq/EFT	Date	Name	Description	Amount
EFT51554 - EFT51753		EFT PAYMENTS CANCELLED DUE TO COMPUTER PROBLEM		
EFT51754	22/09/2016	WEX AUSTRALIA PTY LTD - WRIGHT EXPRESS FUEL CARDS AUSTRALIA LTD	FUEL - PERIOD ENDING 19 SEPTEMBER 2016	3583.55
EFT51755	22/09/2016	FORRESTFIELD & DISTRICTS BOWLING CLUB INC	SUCCESSFUL FUNDING CONTRIBUTION FOR BOWLING CLUB TOWARDS KITCHEN UPGRADE PROJECT AT THE CLUB ROOMS	3300.00
EFT51756	22/09/2016	SHAWMAC PTY LTD	NARDINE CLOSE TENDERING AND CONSTRUCTING SUPERVISION	8800.00
EFT51757	22/09/2016	JB HI-FI MIDLAND	ELECTRICAL SUPPLIES	109.00
EFT51758	22/09/2016	KALAMUNDA GLASS & WINDSCREENS ON WHEELS	GLASS REPAIRS / MAINTENANCE FOR VARIOUS LOCATIONS	1549.10
EFT51759	22/09/2016	FITNESS AUSTRALIA LTD	SUBSCRIPTION RENEWAL FOR MAGAZINE	750.00
EFT51760	22/09/2016	FREESTYLE NOW	SKATE PARK WORKSHOPS AT VARIOUS SKATE PARKS	726.00
EFT51761	22/09/2016	OLK & ASSOCIATES	ARCHITECTURAL CONSULTING SERVICES	4950.00
EFT51762	22/09/2016	CABCHARGE AUSTRALIA LIMITED	CABCHARGE FEES	74.55
EFT51763	22/09/2016	COLLECTOR OF PUBLIC MONIES (CENTRELINK)	CENTREPAY TRANSACTION FEES	78.54
EFT51764	22/09/2016	NEVERFAIL SPRINGWATERLTD (FORRESTFIELD LIB)	BOTTLED WATER SUPPLIES / MAINTENANCE	22.70
EFT51765	22/09/2016	TOP OF THE LADDER GUTTER CLEANING	GUTTER CLEANING SERVICES FOR VARIOUS LOCATIONS	973.50
EFT51766	22/09/2016	ALL EARTH GROUP PTY LTD	ROAD MATERIALS FOR VARIOUS LOCATIONS	1620.30
EFT51767	22/09/2016	KALAMUNDA KICKBOXING & MARTIAL ARTS	KIDSPORT FUNDING FOR VARIOUS PLAYERS	200.00
EFT51768	22/09/2016	VIP CARPET AND UPHOLSTERY CLEANING SERVICE	CARPET CLEANING AT VARIOUS LOCATIONS	2404.00
EFT51769	22/09/2016	THE LULUS	THE LULU'S CHILDS ENTERTAINMENT FOR HARTFIELD PARK RECREATION CENTRE OPEN DAY	1320.00
EFT51770	22/09/2016	CADGROUP AUSTRALIA PTY LTD	ANNUAL MAINTENANCE OF AUTOCAD LICENSES	8761.50
EFT51771	22/09/2016	GIRL GUIDES WESTERN AUSTRALIA INC	KIDSPORT FUNDING FOR VARIOUS PLAYERS	440.00
EFT51772	22/09/2016	DONALD C TYLER	ADMIN FEE REFUND	15.00
EFT51773	22/09/2016	APPLE SETTLEMENTS	RATES REFUND	109.59
EFT51774	22/09/2016	PATRICIA LEE & MAVIS DALY	ADMIN FEE REFUND	15.00
EFT51775	22/09/2016	YVONNE BRUCE MCGUIGAN - THE LATE ESTATE	ADMIN FEE REFUND	15.00

Chq/EFT	Date	Name	Description	Amount
EFT51776	22/09/2016	BERNARD & MAUREEN ELLEN MARTIN	ADMIN FEE REFUND	15.00
EFT51777	22/09/2016	ELISABETH GEORGETTE TERRIER	ADMIN FEE REFUND	15.00
EFT51778	22/09/2016	HEATHER JUNE & STEPHEN GEOFFREY FARMERS	ADMIN FEE REFUND	15.00
EFT51779	22/09/2016	MARION LOUISE & ROSS HOGG	ADMIN FEE REFUND	15.00
EFT51780	22/09/2016	DAVID HOCKEN & JENNIFER JAY	ADMIN FEE REFUND	15.00
EFT51781	22/09/2016	GERARD FRANCIS & ROSINA BERRY	ADMIN FEE REFUND	15.00
EFT51782	22/09/2016	CELIA M HOLLENBERG	ADMIN FEE REFUND	15.00
EFT51783	22/09/2016	MARILENA ARMANASCO	ADMIN FEE REFUND	15.00
EFT51784	22/09/2016	PETER KEARNEY DRAGE	RATES REFUND	331.52
EFT51785	22/09/2016	MELVYN ADRIAN DOCHERTY	ADMIN FEE REFUND	15.00
EFT51786	22/09/2016	BENJAMIN THACKRAY	TRAVEL COMMUNITY VISITORS SCHEME REFUND	190.00
EFT51787	22/09/2016	GAVAN ARNOLD & DAPHNE EILEEN WILTON	ADMIN FEE REFUND	15.00
EFT51789	22/09/2016	DAVID JAMES NICOL	ADMIN FEE REFUND	15.00
EFT51790	22/09/2016	KENNETH NEWTON & CATHERINE PEARL WATERS	ADMIN FEE REFUND	15.00
EFT51791	22/09/2016	NELLIE TURKICH	ADMIN FEE REFUND	15.00
EFT51792	22/09/2016	DOUGLAS PRESTON	ADMIN FEE REFUND	15.00
EFT51793	22/09/2016	COLIN FRASER	ADMIN FEE REFUND	15.00
EFT51794	22/09/2016	VERONICA PATRICIA KITT	ADMIN FEE REFUND	15.00
EFT51795	22/09/2016	WAYNE SMITH	ADMIN FEE REFUND	15.00
EFT51796	22/09/2016	CRAIG KENNEDY & TERESA MARY STEWART	ADMIN FEE REFUND	15.00
EFT51797	22/09/2016	SHIRE OF KALAMUNDA STAFF SOCIAL CLUB	PAYROLL DEDUCTIONS	354.00
EFT51798	22/09/2016	CHILD SUPPORT AGENCY	PAYROLL DEDUCTIONS	684.38
EFT51799	22/09/2016	BUNNINGS BUILDING SUPPLIES	HARDWARE SUPPLIES FOR VARIOUS LOCATIONS	179.50
EFT51800	22/09/2016	COVS PARTS PTY LTD	PLANT / VEHICLE PARTS	291.61
EFT51801	22/09/2016	LANDGATE	LAND ENQUIRIES FOR VARIOUS LOCATIONS	124.25
EFT51802	22/09/2016	KALAMUNDA AUTO ELECTRICS	PLANT / VEHICLE PARTS	990.55
EFT51803	22/09/2016	KALAMUNDA TOYOTA	PLANT / VEHICLE PARTS	354.82
EFT51804	22/09/2016	MCLEODS BARRISTERS & SOLICITORS	LEGAL EXPENSES	12655.53
EFT51805	22/09/2016	LANDGATE - VALUATIONS	VALUATIONS FOR VARIOUS LOCATIONS	690.10
EFT51806	22/09/2016	WALKERS HARDWARE (MITRE 10)	HARDWARE SUPPLIES	387.84

Chq/EFT	Date	Name	Description	Amount
EFT51807	22/09/2016	MCKAY EARTHMOVING PTY LTD	PLANT EQUIPMENT AND OPERATOR HIRE FOR VARIOUS LOCATIONS	15356.77
EFT51808	22/09/2016	BORAL CONSTRUCTION MATERIALS GROUP	ROAD MATERIALS FOR VARIOUS LOCATIONS	3213.33
EFT51809	22/09/2016	DOMUS NURSERY	GARDEN SUPPLIES FOR VARIOUS LOCATIONS	125.40
EFT51810	22/09/2016	VODAFONE HUTCHISON AUSTRALIA PTY LTD	COMMUNICATION EXPENSES FOR EMERGENCY SERVICES - SEPTEMBER 2016	1837.66
EFT51811	22/09/2016	FASTA COURIERS	COURIER FEES	330.46
EFT51812	22/09/2016	THE WATERSHED WATER SYSTEMS	RETICULATION PARTS FOR VARIOUS RESERVES	632.30
EFT51813	22/09/2016	FORRESTFIELD MOWER CENTRE	SUPPLY OF HARDWARE / PLANT PARTS	993.50
EFT51814	22/09/2016	ALSCO LINEN SERVICE	LINEN HIRE / LAUNDRY SERVICES	1074.12
EFT51815	22/09/2016	BRADOCK PODIATRY SERVICES PTY LTD	PODIATRY SERVICES AT JACK HEALEY CENTRE	1292.50
EFT51816	22/09/2016	DAYNITE TOWING SERVICE (WA) PTY LTD (FORMERLEY MOBITOW PTY LTD)	TOWING SERVICES	143.00
EFT51817	22/09/2016	LINDLEY CONTRACTING	PLUMBING REPAIRS / MAINTENANCE FOR VARIOUS LOCATIONS	4999.50
EFT51818	22/09/2016	KALA BOB KATS PTY LTD	PLANT EQUIPMENT AND OPERATOR HIRE FOR VARIOUS LOCATIONS	6812.15
EFT51819	22/09/2016	DEPARTMENT OF PREMIER & CABINET - STATE LAW PUBLISHER	GOVERNMENT GAZETTE ADVERTISING	161.28
EFT51820	22/09/2016	GRIMES CONTRACTING PTY LTD	CONTRACTOR BUILDING MAINTENANCE FOR VARIOUS BUILDINGS	66.00
EFT51821	22/09/2016	BGC ASPHALT	ROAD MATERIALS FOR VARIOUS LOCATIONS	322.30
EFT51822	22/09/2016	WESTSIDE FIRE SERVICES	TESTING AND INSPECTION OF FIRE EQUIPMENT / SUPPLIES	156.75
EFT51823	22/09/2016	KALAMUNDA STATE EMERGENCY SERVICE (SES)	REIMBURSEMENT - GOODS AND SERVICES	2198.32
EFT51824	22/09/2016	MILPRO WA (INCORPORATING HILL TOP TROPHIES)	SUPPLY OF NAME BADGES	93.50
EFT51825	22/09/2016	FOODWORKS FRESH FORRESTFIELD	GROCERY SUPPLIES	460.28
EFT51826	22/09/2016	MARKETFORCE PTY LTD	ADVERTISING FOR VARIOUS JOBS / EVENTS	3610.61
EFT51827	22/09/2016	KALAMUNDA & DISTRICTS JUNIOR FOOTBALL CLUB INC	KIDSPORT FUNDING FOR VARIOUS PLAYERS	4118.50
EFT51828	22/09/2016	LO-GO APPOINTMENTS	HIRE OF TEMPORARY STAFF FOR DEPOT / ADMIN	13411.99

Chq/EFT	Date	Name	Description	Amount
EFT51829	22/09/2016	STAFF AUSTRALIA	HIRE OF TEMPORARY STAFF FOR DEPOT / ADMIN	1974.63
EFT51830	22/09/2016	ONESTEEL DISTRIBUTION (MIDALIA STEEL)	PLANT / VEHICLE PARTS	77.00
EFT51831	22/09/2016	DFES DIRECT BRIGADE ALARM MONITORING	ANNUAL MONITORING 2016/17	1763.28
EFT51832	22/09/2016	KALAMUNDA & DISTRICTS HISTORICAL SOCIETY	ANNUAL CONTRIBUTION AS PER LIST AND INSURANCE REFUND	27275.00
EFT51833	22/09/2016	KALAMUNDA CHRISTIAN SCHOOL	KIDSPORT FUNDING FOR VARIOUS PLAYERS	150.00
EFT51834	22/09/2016	SEBASTIAN BUTCHERS	CATERING SUPPLIES	59.99
EFT51835	22/09/2016	SUMMIT HOMES GROUP	FOOTPATH DEPOSIT REFUND	1500.00
EFT51836	22/09/2016	ROTARY CLUB OF KALAMUNDA INC	STALL SPACES FOR YOUNG CREATIVE STALL HOLDERS AT KALAMUNDA VILLAGE MARKETS	90.00
EFT51837	22/09/2016	CRABBS KALAMUNDA (IGA)	GROCERY SUPPLIES	803.43
EFT51838	22/09/2016	ELLENBY TREE FARM	GARDEN / RESERVE SUPPLIES	3217.50
EFT51839	22/09/2016	KALAMUNDA PLUMBING & ELECTRICAL	PLUMBING REPAIRS / MAINTENANC FOR VARIOUS LOCATIONS	3465.00
EFT51840	22/09/2016	WILD SEASONS FLOWERS PTY LTD	FLOWER ARRANGEMENTS	75.00
EFT51841	22/09/2016	KALAMUNDA & DISTRICTS BASKETBALL ASSOCIATION INC	KIDSPORT FUNDING FOR VARIOUS PLAYERS	2200.00
EFT51842	22/09/2016	CHAMBER OF COMMERCE & INDUSTRY OF WA	CONSULTING SERVICES IN RELATION TO EMPLOYEE RELATION MATTERS	308.00
EFT51843	22/09/2016	HILL TOP GROUP PTY	CONTRACTOR BUILDING MAINTENANCE FOR VARIOUS BUILDINGS	24306.07
EFT51844	22/09/2016	ANALYTICAL REFERENCE LABORATORY	SOIL AND ASBESTOS SAMPLE FOR ANALYSIS	143.00
EFT51845	22/09/2016	MOORE STEPHENS (WA) PTY LTD	REGISTRATION FOR STAFF TO ATTEND NUTS & BOLTS AND FINANCE ESSENTIAL WORKSHOP 2016	1564.20
EFT51846	22/09/2016	CENTRAL REGIONAL TAFE	LOCAL GOVERNMENT REGULATORY SERVICES - RANGERS FOR CERTIFICATE IV	2300.00
EFT51847	22/09/2016	HAYS SPECIALIST RECRUITMENT (AUSTRALIA) PTY LTD	HIRE OF TEMPORARY STAFF FOR ADMIN / DEPOT	4970.19
EFT51848	22/09/2016	FORRESTFIELD LITTLE ATHLETICS CLUB	KEY BOND REFUND	50.00
EFT51849	22/09/2016	WEST AUSTRALIAN NEWSPAPERS HOLDINGS LTD	WHATS ON IN THE WEST - ZIG ZAG GALLERY EXHIBITION ADVERTISING	184.30

Chq/EFT	Date	Name	Description	Amount
EFT51850	22/09/2016	BERND WILHELM & SIMONE RIES	ADMIN FEE REFUND	15.00
EFT51851	22/09/2016	RUPERT BROOKE & MARGARET FAY SKINNER	ADMIN FEE REFUND	15.00
EFT51852	22/09/2016	DAVID MESSINA	HALL BOND REFUND	300.00
EFT51853	22/09/2016	FOOD TECHNOLOGY SERVICES PTY LTD	HIRE OF TEMPORARY STAFF FOR HEALTH DEPARTMENT	3833.17
EFT51854	22/09/2016	BGC RESIDENTIAL PTY LTD	FOOTPATH DEPOSIT REFUND	1550.00
EFT51855	22/09/2016	DAVID MARSHALL	2016 RATES INCENTIVE PRIZE WINNER	1000.00
EFT51856	22/09/2016	WESTRAC PTY LTD	PLANT / VEHICLE PARTS	330.84
EFT51857	22/09/2016	KALAMUNDA GOSPEL TRUST	RATES REFUND	185.15
EFT51858	22/09/2016	SIGN-A -RAMA	SIGNAGE SUPPLIES FOR VARIOUS LOCATIONS	528.00
EFT51859	22/09/2016	BLUEPRINT HOMES	FOOTPATH DEPOSIT REFUND	1437.00
EFT51860	22/09/2016	WOOLWORTHS LIMITED	GROCERY SUPPLIES	48.50
EFT51861	22/09/2016	MARTIN & TERESA DORMAN	ADMIN FEE REFUND	15.00
EFT51862	22/09/2016	HILLS GAS SUPPLY	SUPPLY OF BOTTLED GAS FOR VARIOUS LOCATIONS	100.00
EFT51863	22/09/2016	HILLIANS NETBALL CLUB	KEY BOND REFUND	50.00
EFT51864	22/09/2016	CELEBRATION NOMINEES PTY LTD	FOOTPATH DEPOSIT REFUND	1550.00
EFT51865	22/09/2016	MALCOLM & KAYE ELIZABETH LITTLELY	ADMIN FEE REFUND	15.00
EFT51866	22/09/2016	EASTERN REGION SECURITY	SECURITY SERVICES TO VARIOUS SHIRE BUILDINGS	6505.56
EFT51867	22/09/2016	GLENDA DAWN CHARLTON (PODIATRY)	PODIATRY SERVICES AT JACK HEALEY CENTRE	775.50
EFT51868	22/09/2016	SECURE TRAFFIC	TRAFFIC MANAGEMENT FOR VARIOUS LOCATIONS	8294.55
EFT51869	22/09/2016	MILUC CIVIL PTY LTD	FOOTPATH DEPOSIT REFUND	1550.00
EFT51870	22/09/2016	EASIFLEET MANAGEMENT	STAFF CONTRIBUTIONS TO NOVATED / OPERATING LEASES	7402.26
EFT51871	22/09/2016	ST CLAIR PHILIP & LOXIE AVIS WILSON	ADMIN FEE REFUND	15.00
EFT51872	22/09/2016	ROMAN ANTONIUK	CROSSOVER CONTRIBUTION	420.00
EFT51873	22/09/2016	MULTILEC ENGINEERING	QUARTERLY SERVICING & TESTING OF LIFTS	550.55
EFT51874	22/09/2016	LESMURDIE SAINTS JUNIOR FOOTBALL CLUB	KIDSPORT FUNDING FOR VARIOUS PLAYERS	400.00
EFT51875	22/09/2016	NEVERFAIL SPRINGWATER LTD (PETER ANDERTON CEN)	BOTTLED WATER SUPPLIES / MAINTENANCE	15.15
EFT51876	22/09/2016	MARY'S MOUNT NETBALL CLUB	KIDSPORT FUNDING FOR VARIOUS PLAYERS	200.00
EFT51877	22/09/2016	KIWALES NETBALL CLUB	KIDSPORT FUNDING FOR VARIOUS PLAYERS	85.00

Chq/EFT	Date	Name	Description	Amount
EFT51878	22/09/2016	LIBERTY OIL WESTERN AUSTRALIA PTY LTD	SUPPLY OF FUEL	21668.00
EFT51879	22/09/2016	GORDON CEDRIC HORT	ADMIN FEE REFUND	15.00
EFT51880	22/09/2016	PH CONCRETE (WA) PTY LTD	FOOTPATH MAINTENANCE / REPAIRS FOR VARIOUS LOCATIONS	72282.96
EFT51881	22/09/2016	STATE WIDE TURF SERVICES	TURF SUPPLIES / MAINTENANCE FOR VARIOUS LOCATIONS	8976.00
EFT51882	22/09/2016	FORRESTFIELD TEEBALL/SOFTBALL ASSOCIATION INC	KIDSPORT FUNDING FOR VARIOUS PLAYERS	337.50
EFT51883	22/09/2016	KOTT GUNNING LAWYERS	LEGAL EXPENSES	1673.44
EFT51884	22/09/2016	BENCHMARK MAINTENANCE SERVICES	CONTRACTOR BUILDING MAINTENANCE VARIOUS BUILDINGS	550.00
EFT51885	22/09/2016	BEAVER TREE SERVICES	TREE REMOVAL / PRUNING FOR VARIOUS LOCATIONS	126777.31
EFT51886	22/09/2016	THE GOOD GUYS	ELECTRICAL SUPPLIES	378.00
EFT51887	22/09/2016	JENNIFER DE YOUNG	VOLUNTEER TRANSPORT REIMBURSEMENT REFUND	290.00
EFT51888	22/09/2016	ROBERT PUGH	KEY BOND REFUND	50.00
EFT51889	22/09/2016	KALAMUNDA BULLDOGS RUGBY LEAGUE FOOTBALL CLUB	KIDSPORT FUNDING FOR VARIOUS PLAYERS	1000.00
EFT51890	22/09/2016	CARMEN CARTER	HALL AND KEY BOND REFUND	550.00
EFT51891	22/09/2016	AROUNDABOUT GARDENING SERVICES	VERGE / GARDEN MAINTENANCE FOR VARIOUS LOCATIONS	1900.80
EFT51892	22/09/2016	HANDS-ON INFECTION CONTROL	HEPATITIS VACCINATIONS FOR VARIOUS STAFF	130.61
EFT51893	22/09/2016	GEORGE MATHEWS	REGISTRATION FOR STAFF TO ATTEND CHEMICAL USE TRAINING	6050.00
EFT51894	22/09/2016	TANGOS NETBALL CLUB	HALL AND KEY BOND REFUND	550.00
EFT51895	22/09/2016	KALAMUNDA ELECTRICS	ELECTRICAL REPAIRS / MAINTENANCE FOR VARIOUS LOCATIONS	3301.88
EFT51896	22/09/2016	AAAC TOWING PTY LTD	TOWING SERVICES FEES	165.00
EFT51897	22/09/2016	BRIAN LEE JONAS-GREEN	ADMIN FEE REFUND	15.00
EFT51898	22/09/2016	DUKE OF EDINBURGH'S AWARD	KIDSPORT FUNDING FOR VARIOUS PLAYERS	137.50
EFT51899	22/09/2016	PUBLIC TRANSPORT AUTHORITY OF WA	KEY BOND REFUND	50.00
EFT51900	22/09/2016	EXECUTIVE MEDIA PTY LTD	ADVERTISING SPRING 2016	1350.00

Chq/EFT	Date	Name	Description	Amount
EFT51901	22/09/2016	KALAMUNDA RANGERS INCORPORATED	KIDSPORT FUNDING FOR VARIOUS PLAYERS	545.00
EFT51902	22/09/2016	CUROST MILK SUPPLY	MILK SUPPLY FOR ADMINISTRATION CENTRE AND DEPOT	425.74
EFT51903	22/09/2016	ZOE STONE	FOOTPATH DEPOSIT REFUND	1500.00
EFT51904	22/09/2016	A1 TROJAN PEST CONTROL	PEST CONTROL SERVICES FOR VARIOUS LOCATIONS	577.00
EFT51905	22/09/2016	CHRIS KERSHAW PHOTOGRAPHY	PHOTOGRAPHY FOR GRAN FONDO CYCLING EVENT 2016	500.00
EFT51906	22/09/2016	GOSNELLS POLICE & COMMUNITY YOUTH CENTRE (PCYC)	KIDSPORT FUNDING FOR VARIOUS PLAYERS	660.00
EFT51907	22/09/2016	SWAN DISTRICTS NETBALL ASSOCIATION	KIDSPORT FUNDING FOR VARIOUS PLAYERS	200.00
EFT51908	22/09/2016	KARINA SMEETS	SALE OF ARTWORK - YOUTH ARTS FESTIVAL EXHIBITION	87.50
EFT51909	22/09/2016	KALAMUNDA MOUNTAIN BIKE COLLECTIVE	HALL BOND REFUND	500.00
EFT51910	22/09/2016	DAVIDSON TRAHARE CORPSYCH	EMPLOYEE ASSISTANCE PROGRAMME	605.00
EFT51911	22/09/2016	URBANECO GARDENS	HOME MAINTENANCE SERVICES	2925.00
EFT51912	22/09/2016	WML CONSULTANTS PTY LTD	SUPPLY OF DETAILED DESIGNS FOR TRAFFIC MANAGEMENT TREATMENTS FOR ADELAIDE STREET	16377.63
EFT51913	22/09/2016	SHIN JU CHEAH	ADMIN FEE REFUND	15.00
EFT51914	22/09/2016	SPIDER WASTE COLLECTION SERVICES PTY LTD	COLLECTION AND RECYCLING OF MATTRESSES FROM WALLISTON TRANSFER STATION	1216.60
EFT51915	22/09/2016	UNDERSTANDING MUSIC SEMINAR	HALL BOND REFUND	650.00
EFT51916	22/09/2016	SUREN SUBRAMANIAM & VINODHA ESWARA GOUNDAN	RATES REFUND	80.41
EFT51917	22/09/2016	TERESA ALDRED - LITTLE ANT PRODUCTIONS	HALL AND KEY BOND REFUND	455.00
EFT51918	22/09/2016	PHOENIX NETBALL CLUB INC	KIDSPORT FUNDING FOR VARIOUS PLAYERS	600.00
EFT51919	22/09/2016	NIRAV SHAH	REIMBURSEMENT FOR CHARTERED ACCOUNTANTS PROGRAM - AUDIT MODULE	800.00
EFT51920	22/09/2016	NEXTRA PAPER PLACE	SUPPLY OF VARIOUS MAGAZINES AND COMICS	51.28
EFT51921	22/09/2016	KATE MAXWELL	PART REFUND OF PILATES PROGRAM	80.85
EFT51922	22/09/2016	BECKENHAM ANGELS SOCCER CLUB INC	KIDSPORT FUNDING FOR VARIOUS PLAYERS	200.00
EFT51923	22/09/2016	MARKET CREATIONS	MARKETING AND TECHNOLOGY SERVICE FEES	3420.55

Chq/EFT	Date	Name	Description	Amount
EFT51924	22/09/2016	AMIAD WATER SYSTEMS	SUPPLY AND DELIVERY OF WATER TREATMENT SUPPLIES - GAC MEDIA SYSTEM (STAGE 1), FOR THE HARFTEILD PARK MAR PROJECT	58242.80
EFT51925	22/09/2016	CHOICELIVING (WA) PTY LTD	FOOTPATH DEPOSIT REFUND	1550.00
EFT51926	22/09/2016	CHATFORD & CO CAFE	BUILDING APPLICATION FEE REFUND	123.00
EFT51927	22/09/2016	MICHAEL JOHN ELLARD	FOOTPATH DEPOSIT REFUND	4000.00
EFT51928	22/09/2016	MANOJ PAZHEMPALLY PHILIP & REEJA KURIAN	RATES REFUND	295.00
EFT51929	22/09/2016	ALLCREDIT PTY LTD	STAFF CONTRIBUTIONS TO NOVATED / OPERATING LEASES	551.96
EFT51930	22/09/2016	HILDA M INGLESE	PASTA DEMONSTRATION AT FORRESTFIELD LIBRARY	220.00
EFT51931	22/09/2016	RIDING FOR THE DISABLED - OAKFORD GROUP	KIDSPORT FUNDING FOR VARIOUS PLAYERS	200.00
EFT51932	22/09/2016	DOUGLAS AUTOMOTIVE (WA) PTY LTD	WHEEL ALIGNMENT SERVICES FOR SHIRE VEHICLES	88.00
EFT51933	22/09/2016	NATASHA BUNN	SALE OF ARTWORK - YOUTH ARTS FESTIVAL EXHIBITION	287.00
EFT51934	22/09/2016	WA HARDWOOD FLOORS	SUPPLY AND INSTALLATION OF A SPRING TIMBER FLOOR AT THE HARTFIELD PARK RECREATION CENTRE	27390.00
EFT51935	22/09/2016	ANSON MANAGEMENT CONSULTING	CONSULTATION FOR SERVICE REVIEW OF KALAMUNDA HOME AND COMMUNITY CARE	6820.00
EFT51936	22/09/2016	PERTH COFFEE SUPPLIES	COFFEE SUPPLIES FOR ADMINISTRATION CENTRE	175.00
EFT51937	22/09/2016	RINGA MAUI NETBALL CLUB	KIDSPORT FUNDING FOR VARIOUS PLAYERS	200.00
EFT51938	22/09/2016	EMILY WARD	SALE OF ARTWORK - YOUTH ARTS FESTIVAL EXHIBITION	7.00
EFT51939	22/09/2016	APRIL PINE	6 YELLOW SCULPTURES FOR PERTH HILLS SPRING FESTIVAL	2720.00
EFT51940	22/09/2016	PT HOMES PTY LTD	FOOTPATH DEPOSIT REFUND	1550.00
EFT51941	22/09/2016	NEW PARADIGM FOUNDATION	BEAT BOXING, VOCAL LOOPING AND RAPPING WORKSHOP AT YOUNG CREATIVES MONTH	500.00
EFT51942	22/09/2016	FRESH COAST SPORTS CLUB INC.	KIDSPORT FUNDING FOR VARIOUS PLAYERS	200.00
EFT51943	22/09/2016	PETA MARTIN	HALL AND KEY BOND REFUND	550.00
EFT51944	22/09/2016	GRANT MENHENNETT	2016 RATES INCENTIVE PRIZE WINNER	1000.00

Chq/EFT	Date	Name	Description	Amount
EFT51945	22/09/2016	CRESCENDO MUSIC	SUPPLY OF A DELUXE PADDED PIANO STOOL WITH STORAGE	214.00
EFT51946	22/09/2016	CRUSADERS NETBALL CLUB	KIDSPORT FUNDING FOR VARIOUS PLAYERS	200.00
EFT51947	22/09/2016	COMPLETE FIRE COMPLIANCE	FLOW AND PRESSURE TESTING TO THE EXISTING ON-SITE FIRE HYDRANT	550.00
EFT51948	22/09/2016	CHRISTIAN WEDNESDAY HOME SCHOOL GROUP	HALL BOND REFUND	400.00
EFT51949	22/09/2016	ALISON PARKER (TRAVEL MANAGERS)	HALL BOND REFUND	200.00
EFT51950	27/09/2016	THE WORKWEAR GROUP PTY LTD	SUPPLY OF UNIFORM FOR VARIOUS STAFF MEMBERS	50.15
EFT51951	27/09/2016	VITACO HEALTH AUSTRALIA PTY LTD	KIOSK SUPPLIES FOR HARTFIELD PARK RECREATION CENTRE	391.11
EFT51952	27/09/2016	VISUAL PUBLICATIONS P/L - COUNTRYWIDE PUBLICATIONS	PRINTING OF WA VISITOR CENTRE MAPS	135.00
EFT51953	27/09/2016	TAMAN DIAMOND TOOLS AND MACHINERY	PLANT / VEHICLE PARTS	277.20
EFT51954	27/09/2016	THE PLANNING GROUP WA PTY LTD (TPG TOWN PLANNING URBAN DESIGN & HERITAGE)	PROFESSIONAL PLANNING SERVICES FOR VARIOUS LOCATIONS	7661.50
EFT51955	27/09/2016	THE LANGUAGE CENTRE	LIBRARY SUPPLIES	80.00
EFT51956	27/09/2016	BIDVEST FOODSERVICE	GROCERY SUPPLIES FOR PETER ANDERTON CENTRE	1963.14
EFT51957	27/09/2016	TOTALLY WORKWEAR	SUPPLY OF PROTECTIVE CLOTHING	1024.02
EFT51958	27/09/2016	ALLAN MORTON	COUNCILLOR ALLOWANCE - 01/09/16 - 30/09/16	2212.51
EFT51959	27/09/2016	COATES HIRE OPERATIONS PTY LTD	PLANT / EQUIPMENT HIRE	1197.41
EFT51960	27/09/2016	STATE LIBRARY OF W.A.	GIFT BOARD BOOKS FOR STATE LIBRARY'S BETTER BEGINNINGS PROGRAM 2016-2017	3927.00
EFT51961	27/09/2016	ECHO NEWSPAPER	ADVERTISING FOR VARIOUS JOBS / EVENTS	1320.00
EFT51962	27/09/2016	CUTTING EDGES PTY LTD	PLANT / VEHICLE PARTS	275.00
EFT51963	27/09/2016	EASTERN METROPOLITAN REGIONAL COUNCIL	DOMESTIC / WASTE CHARGES - RED HILL TIP REVISE SCOPE OF WORKS FOR GAS MONITORING WORK AT DAWSON PARK	390109.69
EFT51964	27/09/2016	OFFICE LINE GROUP PTY LTD	OFFICE FURNITURE SUPPLIES	2571.80
EFT51965	27/09/2016	STATEWIDE BEARINGS	PLANT / VEHICLE PARTS	140.57
EFT51966	27/09/2016	RAECO	STATIONERY / OFFICE SUPPLIES	463.87

Chq/EFT	Date	Name	Description	Amount
EFT51967	27/09/2016	MCINTOSH & SON	PLANT / VEHICLE PARTS	3349.34
EFT51968	27/09/2016	SONIC HEALTHPLUS (KINETIC HEALTH GROUP LTD)	PREPLACEMENT MEDICALS / BASELINE HEARING TESTS	1756.70
EFT51969	27/09/2016	CLEAN CLOTH COTTON TRADERS	PROTECTIVE SUPPLIES	164.87
EFT51970	27/09/2016	DEPARTMENT OF PARKS & WILDLIFE	ANNUAL ALL PARKS PASS X 5 HOLIDAY PARK PASS X 5	594.00
EFT51971	27/09/2016	ACTIMED AUSTRALIA PTY LTD	MEDICAL SUPPLIES FOR PODIARTIST	530.20
EFT51972	27/09/2016	STONETRADERS PTY LTD	GARDEN / RESERVE SUPPLIES	1312.00
EFT51973	27/09/2016	GRONBEK SECURITY	SECURITY KEY SERVICES TO VARIOUS LOCATIONS	45.00
EFT51974	27/09/2016	WA LIMESTONE COMPANY	ROAD MATERIALS FOR VARIOUS LOCATIONS	5597.42
EFT51975	27/09/2016	STAPLES AUSTRALIA PTY LTD(CORPORATE EXPRESS AUSTRALIA LTD)	STATIONERY / OFFICE SUPPLIES	1590.87
EFT51976	27/09/2016	JOHN GIARDINA	COUNCILLOR ALLOWANCE - 01/09/16 - 30/09/16	3519.34
EFT51977	27/09/2016	GEOFF STALLARD	COUNCILLOR ALLOWANCE - 01/09/16 - 30/09/16	2212.51
EFT51978	27/09/2016	BUCHER MUNICIPAL PTY LTD	PLANT / VEHICLE PARTS	3388.30
EFT51979	27/09/2016	TL ENGINEERING (AUST) PTY LTD	PLANT / VEHICLE PARTS	491.50
EFT51980	27/09/2016	STAFF AUSTRALIA	HIRE OF TEMPORARY STAFF FOR DEPOT / ADMIN	1948.72
EFT51981	27/09/2016	BRIDGESTONE AUSTRALIA LTD	PLANT / VEHICLE PARTS	2205.80
EFT51982	27/09/2016	METTAM'S MUFFLER MIDLAND	PLANT / VEHICLE PARTS	60.00
EFT51983	27/09/2016	J BLACKWOOD & SON LIMITED	PROTECTIVE WEAR / SUPPLIES	7531.48
EFT51984	27/09/2016	BIBBULMUN TRACK FOUNDATION	MERCHANDISE FOR RESALE AT THE ZIG ZAG CULTURAL CENTRE	636.50
EFT51985	27/09/2016	TOTAL EDEN PTY LTD	RETICULATION PARTS AS REQUIRED CAT 1 RESERVES	605.00
EFT51986	27/09/2016	BAILEYS FERTILISERS	GARDEN / RESERVE SUPPLIES	1054.35
EFT51987	27/09/2016	TOTAL PACKAGING (WA) PTY LTD	SUPPLY OF DOG LITTER BAGS	858.00
EFT51988	27/09/2016	ABNOTE AUSTRALASIA PTY LTD	LIBRARY SUPPLIES - ADHESIVE BARCODE LABELS	839.30
EFT51989	27/09/2016	METROCOUNT	SURVEYING SUPPLIES	9608.50
EFT51990	27/09/2016	THE FARM SHOP	GARDEN / RESERVE SUPPLIES	1909.00
EFT51991	27/09/2016	ROAD AND TRAFFIC SERVICES	LINE MARKING AT VARIOUS LOCATIONS	6714.80
EFT51992	27/09/2016	QUICK CORPORATE AUST PTY LTD	STATIONERY & OFFICE SUPPLIES	4811.04
EFT51993	27/09/2016	SUSAN BILICH	COUNCILLOR ALLOWANCE - 01/09/16 - 30/09/16	2212.51

Chq/EFT	Date	Name	Description	Amount
EFT51994	27/09/2016	ACES (ANIMAL CARE EQUIPMENT & SERVICES P/L)	ANIMAL HANDLING EQUIPMENT	161.89
EFT51995	27/09/2016	BROOKE O'DONNELL	COUNCILLOR ALLOWANCE - 01/09/16 - 30/09/16	2212.51
EFT51996	27/09/2016	SHENTON ENTERPRISES PTY LTD	POOL CLEANING SUPPLIES	10994.50
EFT51997	27/09/2016	LOCK, STOCK & FARRELL LOCKSMITH PTY LTD	PADLOCKS / KEYS SUPPLIES	1626.50
EFT51998	27/09/2016	PARKERS YELLOWMETAL PTY LTD T/A METAL WORKS PERTH	BOLLARD REPAIRS / MAINTENANCE	3707.00
EFT51999	27/09/2016	OPUS INTERNATIONAL CONSULTANTS (PCA) LIMITED	UNDERTAKE A FURTHER REVIEW TO THE IMPACT OF THE PROPOSED TOWN CENTRE INTERSECTION UPGRADES ON THE ADJACENT ROAD NETWORK - RECREATION ROAD, BOONOOLOO ROAD AND KALAMUNDA ROAD	16390.00
EFT52000	27/09/2016	MICHAEL ANDREW FERNIE	COUNCILLOR ALLOWANCE - 01/09/16 - 30/09/16	2212.51
EFT52001	27/09/2016	COCA-COLA AMATIL (AUST) PTY LTD	KIOSK SUPPLIES FOR HARTFIELD RECREATION CENTRE	561.03
EFT52002	27/09/2016	G FORCE PRINTING	SUPPLY OF PRINTED STATIONERY STOCK	334.18
EFT52003	27/09/2016	T-QUIP	PLANT / VEHICLE PARTS	1441.95
EFT52004	27/09/2016	HOSECO	PLANT / VEHICLE PARTS	150.97
EFT52005	27/09/2016	HYDROQUIP PUMPS	MAINTENANCE OF PUMPING INSTALLATIONS	21848.75
EFT52006	27/09/2016	ABAXA (WH LOCATION SERVICES)	SUPPLY UNDERGROUND SERVICE LOCATIONS	1205.20
EFT52007	27/09/2016	DIRECT TRADES SUPPLY PTY LTD	HARDWARE SUPPLIES	503.37
EFT52008	27/09/2016	SPECIALISED SECURITY SHREDDING	SECURE DOCUMENT DISPOSAL BIN REMOVAL AND REPLACEMENT	88.00
EFT52009	27/09/2016	DISCUS DIGITAL PRINT	ADVERTISING FOR VARIOUS EVENTS	1296.90
EFT52010	27/09/2016	TAYLOR BURRELL BARNETT	PLANNING AND MOVEMENT NETWORK REVIEW FOR FORRESTFIELD AND HIGH WYCOMBE INDUSTRIAL AREA	2497.00
EFT52011	27/09/2016	GREENWAY ENTERPRISES	GARDEN / RESERVE SUPPLIES	1975.60
EFT52012	27/09/2016	OFFICEWORKS SUPERSTORES PTY LTD	OFFICE SUPPLIES / STATIONERY	859.95
EFT52013	27/09/2016	WESTRAC PTY LTD	PLANT / VEHICLE PARTS	483.41
EFT52014	27/09/2016	SARA LOHMEYER	COUNCILLOR ALLOWANCE - 01/09/16 - 30/09/16	2212.51

Chq/EFT	Date	Name	Description	Amount
EFT52015	27/09/2016	DEPARTMENT OF PARKS AND WILDLIFE	MERCHANDISE FOR RESALE AT THE ZIG ZAG CULTURAL CENTRE	2463.03
EFT52016	27/09/2016	MAYDAY EARTHMOVING	PLANT AND EQUIPMENT HIRE	1826.00
EFT52017	27/09/2016	INSIGHT CCS PTY LTD	AFTER HOURS ANSWERING SERVICES - JULY 2016	3168.89
EFT52018	27/09/2016	NOREEN TOWNSEND	COUNCILLOR ALLOWANCE - 01/09/16 - 30/09/16	2212.51
EFT52019	27/09/2016	SNAP PRINTING - MIDLAND	PRINTING OF BUSINESS CARDS FOR VARIOUS STAFF	788.00
EFT52020	27/09/2016	SIMON DI ROSSO	COUNCILLOR ALLOWANCE - 01/09/16 - 30/09/16	2212.51
EFT52021	27/09/2016	BUICK HOLDINGS T/AS DVG GOLDY HOLDEN	REMOVE AND RE-FIT RE-CONDITIONED TRANSMISSION, AND CARRY OUT 195000K SERVICE FOR SHIRE VEHICLE	5959.89
EFT52022	27/09/2016	HUMES	DRAINAGE SUPPLIES FOR VARIOUS LOCATIONS	8478.81
EFT52023	27/09/2016	PRO-LAMPS PTY LTD	SUPPLY LIGHTING EQUIPMENT GLOBES AND SPARES AS SELECTED	444.41
EFT52024	27/09/2016	BOYA EQUIPMENT PTY LTD	PLANT / VEHICLE PARTS	1885.55
EFT52025	27/09/2016	ROAD SIGNS AUSTRALIA (ALLPACK SIGNS)	TRAFFIC PROTECTION PRODUCTS / SIGNAGE	1492.70
EFT52026	27/09/2016	PIRTEK WELSHPOOL	PLANT / VEHICLE PARTS	322.86
EFT52027	27/09/2016	HOLCIM AUSTRALIA PTY LTD	ROAD MATERIALS FOR VARIOUS LOCATIONS	3231.93
EFT52028	27/09/2016	ANDREW WADDELL	COUNCILLOR ALLOWANCE - 01/09/16 - 30/09/16	8093.17
EFT52029	27/09/2016	DRAINFLOW SERVICES PTY LTD	CLEANING / MAINTAINING STORM WATER DRAINS	21737.10
EFT52030	27/09/2016	FORESTVALE TREES PTY LTD	GARDEN / VERGE SUPPLIES	792.00
EFT52031	27/09/2016	APOLLO FABRICATIONS	PLANT / VEHICLE PARTS	869.00
EFT52032	27/09/2016	DYLAN O'CONNOR	COUNCILLOR ALLOWANCE - 01/09/16 - 30/09/16	2212.51
EFT52033	27/09/2016	BOWDEN TREE CONSULTANCY	ARBORICULTURAL CONSULTANCY	858.00
EFT52034	27/09/2016	ARMADILLO GROUP PTY LTD	PLANT / VEHICLE PARTS	788.77
EFT52035	27/09/2016	GRAEME HARRIS GUNS T/S GUN MART & TACKLE	SERVICE OF TWO FIREARMS	130.00
EFT52036	27/09/2016	CENTURION TEMPORARY FENCING	TEMPORARY FENCING HIRE	1456.13
EFT52037	27/09/2016	ACCESS OFFICE INDUSTRIES	LIBRARY SUPPLIES	1290.30
EFT52038	27/09/2016	FUJI XEROX AUSTRALIA PTY LTD	PHOTOCOPYING CHARGES	2235.86
EFT52039	27/09/2016	HARE & FORBES PTY LTD	PLANT / VEHICLE PARTS	4399.10
EFT52040	27/09/2016	RHONDA HARDY	REFUND OF EMPLOYMENT CONTRACT ALLOWANCE	179.85

Chq/EFT	Date	Name	Description	Amount
EFT52041	27/09/2016	HEMA MAPS PTY LTD	SUPPLY OF VARIOUS MERCHANDISE FOR RESALE AT THE ZIG ZAG CULTURAL CENTRE	613.71
EFT52042	27/09/2016	DAIMLER TRUCKS PERTH	PLANT / VEHICLE PARTS	63.05
EFT52043	27/09/2016	PUBLIC TRANSPORT AUTHORITY OF WA	BUS SHELTER AND HARDSTAND REPLACEMENT - LESMURDIE ROAD - INSURANCE CLAIM SN13763	20190.01
EFT52044	27/09/2016	TRACY L DESTREE-THOMPSON	COUNCILLOR ALLOWANCE - 01/09/16 - 30/09/16	2212.51
EFT52045	27/09/2016	TURFWORKS WA PTY LTD	RESERVE MOWING AT VARIOUS LOCATIONS	12245.09
EFT52046	27/09/2016	ENVIRO SWEEP	SWEEPING SERVICES AT VARIOUS LOCATIONS	20021.79
EFT52047	27/09/2016	GECCO	MERCHANDISE FOR RESALE AT THE ZIG ZAG CULTURAL CENTRE	540.01
EFT52048	27/09/2016	PERTH WASTE PTY LTD	DOMESTIC / RECYCLING RUBBISH SERVICES & BIN CHARGES	303967.58
EFT52049	27/09/2016	INTEGRATED RECORDS MANAGEMENT	MONTHLY OFFSITE STORAGE FEES	542.03
EFT52050	27/09/2016	ASHDENE MANUFACTURING PTY LTD	MERCHANDISE FOR RESALE AT THE ZIG ZAG CULTURAL CENTRE	1817.52
EFT52051	27/09/2016	DAYTONE PRINTING PTY LTD	PRINTING OF BROCHURES / INVITES	334.40
EFT52052	27/09/2016	WEST TIP WASTE CONTROL PTY LTD	COLLECTION AND TRANSPORTATION OF HOOK LIFT BINS AT WALLISTON TRANSFER STATION	14708.93
EFT52053	27/09/2016	MASTERS OF LIFE FOUNDATION	MERCHANDISE FOR RESALE AT THE ZIG ZAG CULTURAL CENTRE	76.00
EFT52054	27/09/2016	FAIR GO TRADING	MERCHANDISE FOR RESALE AT THE ZIG ZAG CULTURAL CENTRE	719.25
EFT52055	27/09/2016	ALPERSTEIN DESIGNS	MERCHANDISE FOR RESALE AT THE ZIG ZAG CULTURAL CENTRE	984.99
EFT52056	27/09/2016	A TEAM PRINTING	PRINTING OF VARIOUS BROCHURES	2193.40
EFT52057	27/09/2016	JAPANESE TRUCK & BUS SPARES PTY LTD	PLANT / VEHICLE PARTS	156.80
EFT52058	27/09/2016	HANNA INSTRUMENTS PTY LTD	QUICK CALIBRATION STANDARD SOLUTION	587.40
EFT52059	27/09/2016	LG ASSIST AUSTRALIA	EMPLOYMENT ADVERTISEMENTS ON LG ASSIST	605.00
EFT52060	27/09/2016	WORLEYPARSONS SERVICES PTY LTD	CONSULTING SERVICES IN ENGINEERING PROCUREMENT AND CONSTRUCTION	8538.31

Chq/EFT	Date	Name	Description	Amount
EFT52061	27/09/2016	AUS CHILL TECHNICAL SERVICES PTY LTD	AIR CONDITIONING REPAIRS AND INSTALLATION TO VARIOUS LOCATIONS	8453.50
EFT52062	27/09/2016	LA LA LAND / HOME & HUMAN FASHION PTY LTD	MERCHANDISE FOR RESALE AT THE ZIG ZAG CULTURAL CENTRE	412.73
EFT52063	27/09/2016	FAIRVIEW PLUMBING & GAS PTY LTD	ATU PLUMBING REPAIRS AND SERVICING AT VARIOUS FACILITIES	495.00
EFT52064	27/09/2016	DYMOCKS BELMONT	LIBRARY SUPPLIES	399.86
EFT52065	27/09/2016	SLIMLINE WAREHOUSE	A4 CHROME MAGAZINE RACK	225.07
EFT52066	27/09/2016	ER CONSULTANTS PTY LTD AS TRUSTEE FOR ERC UNIT TRUST	CONSULTING SERVICES - DETAILED SITE INVESTIGATION (DSI) - ASBESTOS IN LANDFILL CAPPING ALAN ANDERSON PARK, 180 LAWNBROOK ROAD, WALLISTON	10187.25
EFT52067	27/09/2016	MAXIGARD TREATING AND CLEANING SERVICES	TREATMENT SPRAY FOR CLUB TO 92.4M POLYESTER CURTAINS PICKERING BROOK SPORTS CLUB	762.30
EFT52068	27/09/2016	SHOP FOR SHOPS	SLOT SYSTEM TIMBER LAMINATE SQUARE SPINNER UNIT FOR ZIG ZAG CULTURAL CENTRE	307.19
EFT52069	27/09/2016	AUSTRALIAN WARNING SYSTEMS PTY LTD	WARNING LIGHT SYSTEM KIT	1933.80
EFT52070	27/09/2016	COLOURMEART	MERCHANDISE FOR RESALE AT THE ZIG ZAG CULTURAL CENTRE	355.85
EFT52071	27/09/2016	POWERVAC PTY LTD	CLEAN FLOOR SCRUBBER	14262.60
69509	07/09/2016	HOSPITAL BENEFIT FUND OF WA	PAYROLL DEDUCTIONS	157.05
69510	07/09/2016	AUSTRALIAN SERVICES UNION	PAYROLL DEDUCTIONS	128.55
69511	07/09/2016	MUNICIPAL EMPLOYEES UNION	PAYROLL DEDUCTIONS	779.02
69512	07/09/2016	TELSTRA CORPORATION	TELEPHONE EXPENSES	7155.14
69513	07/09/2016	WATER CORPORATION	WATER USE AND SERVICE CHARGE FEES	3108.68
69514	07/09/2016	BCITF	LEVY FEE - AUGUST 2016	19850.77
69515	07/09/2016	SYNERGY	POWER CHARGES	34860.90
69516	07/09/2016	DIRECTOR OF LICENSING SERVICES	LOCAL AUTHORITY SERIES NUMBER PLATES	200.00
69517	07/09/2016	RAC	ROADSIDE ASSISTANCE	95.00
69518	07/09/2016	BUILDING COMMISSION	BUILDING LEVY - AUGUST 2016	9308.41
69519	07/09/2016	CASH - MEALS ON WHEELS	PETTY CASH REIMBURSEMENT	213.60

Chq/EFT	Date	Name	Description	Amount
69520	07/09/2016	CASH - LESMURDIE LIBRARY	PETTY CASH REIMBURSEMENT	80.00
69521	12/09/2016	CASH - ADMIN	PETTY CASH REIMBURSEMENT	1000.00
69522	21/09/2016	WALTER JOHN PRICE	CLIENT ACCOUNT IN CREDIT - NO LONGER RECEIVING SERVICES - REIMBURSEMENT DUE	16.00
69523	21/09/2016	HOSPITAL BENEFIT FUND OF WA	PAYROLL DEDUCTIONS	157.05
69524	21/09/2016	AUSTRALIAN SERVICES UNION	PAYROLL DEDUCTIONS	128.55
69525	21/09/2016	MUNICIPAL EMPLOYEES UNION	PAYROLL DEDUCTIONS	779.02
69526	21/09/2016	TELSTRA CORPORATION	TELEPHONE EXPENSES	20222.21
69527	21/09/2016	WATER CORPORATION	WATER USE AND SERVICE CHARGE FEES	5935.99
69528	21/09/2016	SYNERGY	POWER CHARGES	118194.95
69529	21/09/2016	CASH - FORRESTFIELD LIBRARY	PETTY CASH REIMBURSEMENT	187.85
69530	21/09/2016	CASH - MEALS ON WHEELS	PETTY CASH REIMBURSEMENT	323.20
69531	21/09/2016	CASH - LESMURDIE LIBRARY	PETTY CASH REIMBURSEMENT	97.59
69532	21/09/2016	CASH - KALAMUNDA HACC	PETTY CASH REIMBURSEMENT	30.95
69533	21/09/2016	CASH - HIGH WYCOMBE LIBRARY	PETTY CASH REIMBURSEMENT	179.75
69534	21/09/2016	ALINTA ENERGY (ELECTRICITY ACCOUNT)	POWER CHARGES	861.09
DD34454.1	06/09/2016	WA LOCAL GOVERNMENT SUPERANNUATION PLAN	SUPERANNUATION CONTRIBUTIONS	96880.10
DD34454.2	06/09/2016	BENDIGO SMART START PERSONAL SUPER	SUPERANNUATION CONTRIBUTIONS	273.16
DD34454.3	06/09/2016	NORTH PERSONAL SUPERANNUATION	SUPERANNUATION CONTRIBUTIONS	104.02
DD34454.4	06/09/2016	HUNDAL & ROGERS FUTURE FUND	SUPERANNUATION CONTRIBUTION	317.18
DD34454.5	06/09/2016	AMPLIFE LIMITED	SUPERANNUATION CONTRIBUTIONS	384.93
DD34454.6	06/09/2016	MEDIA SUPER	SUPERANNUATION CONTRIBUTIONS	51.57
DD34454.7	06/09/2016	ANZ SMART CHOICE SUPER	SUPERANNUATION CONTRIBUTIONS	245.02
DD34454.8	06/09/2016	HESTA SUPER FUND	SUPERANNUATION CONTRIBUTIONS	731.66
DD34454.9	06/09/2016	AMP RETIREMENT SAVINGS ACCOUNT	SUPERANNUATION CONTRIBUTIONS	261.28
DD34567.1	20/09/2016	WA LOCAL GOVERNMENT SUPERANNUATION PLAN	SUPERANNUATION CONTRIBUTIONS	97134.16
DD34567.2	20/09/2016	SMITHFORD SUPERANNUATION FUND	SUPERANNUATION CONTRIBUTIONS	303.58
DD34567.3	20/09/2016	BENDIGO SMART START PERSONAL SUPER	SUPERANNUATION CONTRIBUTIONS	273.16
DD34567.4	20/09/2016	NORTH PERSONAL SUPERANNUATION	SUPERANNUATION CONTRIBUTIONS	104.02
DD34567.5	20/09/2016	HUNDAL & ROGERS FUTURE FUND	SUPERANNUATION CONTRIBUTION	317.18

Chq/EFT	Date	Name	Description	Amount
DD34567.6	20/09/2016	AMPLIFE LIMITED	SUPERANNUATION CONTRIBUTIONS	373.62
DD34567.7	20/09/2016	MEDIA SUPER	SUPERANNUATION CONTRIBUTIONS	39.92
DD34567.8	20/09/2016	ANZ SMART CHOICE SUPER	SUPERANNUATION CONTRIBUTIONS	245.02
DD34567.9	20/09/2016	HESTA SUPER FUND	SUPERANNUATION CONTRIBUTIONS	667.64
DD34454.10	06/09/2016	COGNET NOMINEES PTY LTD ACF MAP SUPER FUND	SUPERANNUATION CONTRIBUTIONS	83.38
DD34454.11	06/09/2016	G ROSS SUPERANNUATION PTY LTD ATF BINDALE SUPER FUND	SUPERANNUATION CONTRIBUTIONS	65.01
DD34454.12	06/09/2016	PETER TUCATS SUPERANNUATION FUND	SUPERANNUATION CONTRIBUTIONS	933.53
DD34454.13	06/09/2016	AMP SUPER LEADER	SUPERANNUATION CONTRIBUTIONS	115.13
DD34454.14	06/09/2016	WATER CORPORATION SUPERANNUATION PLAN	SUPERANNUATION CONTRIBUTIONS	279.68
DD34454.15	06/09/2016	ASGARD & WRAP ALLOCATED PENSION	SUPERANNUATION CONTRIBUTIONS	131.17
DD34454.16	06/09/2016	IOOF PORTFOLIO SERVICE PERSONAL SUPERANNUATION	SUPERANNUATION CONTRIBUTIONS	121.25
DD34454.17	06/09/2016	AUSTRALIAN CATHOLIC SUPERANNUATION & RETIREMENT FUND (ACSRF)	SUPERANNUATION CONTRIBUTIONS	255.61
DD34454.18	06/09/2016	POWERWRAP MASTER PLAN	SUPERANNUATION CONTRIBUTIONS	293.35
DD34454.19	06/09/2016	HOSTPLUS PTY LTD	SUPERANNUATION CONTRIBUTIONS	606.27
DD34454.20	06/09/2016	LGIA SUPER	SUPERANNUATION CONTRIBUTION	286.12
DD34454.21	06/09/2016	VISION SUPER PTY LTD	SUPERANNUATION CONTRIBUTIONS	797.93
DD34454.22	06/09/2016	ONEPATH MASTERFUND	SUPERANNUATION CONTRIBUTIONS	218.48
DD34454.23	06/09/2016	REST SUPERANNUATION	SUPERANNUATION CONTRIBUTIONS	1772.83
DD34454.24	06/09/2016	ANZ SUPER ADVANTAGE	SUPERANNUATION CONTRIBUTIONS	226.24
DD34454.25	06/09/2016	KINETIC SUPERANNUATION LTD	SUPERANNUATION CONTRIBUTIONS	213.15
DD34454.26	06/09/2016	MLC MASTERKEY SUPER GOLD STAR VERSION ACCOUNT	SUPERANNUATION CONTRIBUTIONS	270.06
DD34454.27	06/09/2016	TWU SUPERANNUATION FUND	SUPERANNUATION CONTRIBUTIONS	226.24
DD34454.28	06/09/2016	BWMT SUPERANNUATION FUND	SUPERANNUATION CONTRIBUTIONS	222.16
DD34454.29	06/09/2016	COLONIAL 1ST STATE SUPERANNUATION	SUPERANNUATION CONTRIBUTIONS	880.93
DD34454.30	06/09/2016	MPJ (WA) PTY LTD	SUPERANNUATION CONTRIBUTIONS	553.09
DD34454.31	06/09/2016	BT SUPER FOR LIFE	SUPERANNUATION CONTRIBUTIONS	808.15
DD34454.32	06/09/2016	PARSONS MC SUPERANNUATION FUND	SUPERANNUATION CONTRIBUTIONS	450.48

Chq/EFT	Date	Name	Description	Amount
DD34454.33	06/09/2016	AUSTRALIAN ETHICAL SUPERANNUATION	SUPERANNUATION CONTRIBUTIONS	137.47
DD34454.34	06/09/2016	AUSTRALIAN SUPERANNUATION	SUPERANNUATION CONTRIBUTIONS	2887.21
DD34567.10	20/09/2016	AMP RETIREMENT SAVINGS ACCOUNT	SUPERANNUATION CONTRIBUTIONS	263.15
DD34567.11	20/09/2016	COGNET NOMINEES PTY LTD ACF MAP SUPER FUND	SUPERANNUATION CONTRIBUTIONS	81.26
DD34567.12	20/09/2016	PETER TUCATS SUPERANNUATION FUND	SUPERANNUATION CONTRIBUTIONS	933.53
DD34567.13	20/09/2016	G ROSS SUPERANNUATION PTY LTD ATF BINDALE SUPER FUND	SUPERANNUATION CONTRIBUTIONS	72.78
DD34567.14	20/09/2016	AMP SUPER LEADER	SUPERANNUATION CONTRIBUTIONS	124.24
DD34567.15	20/09/2016	WATER CORPORATION SUPERANNUATION PLAN	SUPERANNUATION CONTRIBUTIONS	279.68
DD34567.16	20/09/2016	ASGARD & WRAP ALLOCATED PENSION	SUPERANNUATION CONTRIBUTIONS	118.08
DD34567.17	20/09/2016	IOOF PORTFOLIO SERVICE PERSONAL SUPERANNUATION	SUPERANNUATION CONTRIBUTIONS	217.63
DD34567.18	20/09/2016	AUSTRALIAN CATHOLIC SUPERANNUATION & RETIREMENT FUND (ACSRF)	SUPERANNUATION CONTRIBUTIONS	255.61
DD34567.19	20/09/2016	POWERWRAP MASTER PLAN	SUPERANNUATION CONTRIBUTIONS	175.03
DD34567.20	20/09/2016	HOSTPLUS PTY LTD	SUPERANNUATION CONTRIBUTIONS	695.89
DD34567.21	20/09/2016	LGIA SUPER	SUPERANNUATION CONTRIBUTION	286.12
DD34567.22	20/09/2016	VISION SUPER PTY LTD	SUPERANNUATION CONTRIBUTIONS	844.78
DD34567.23	20/09/2016	REST SUPERANNUATION	SUPERANNUATION CONTRIBUTIONS	1869.46
DD34567.24	20/09/2016	ONEPATH MASTERFUND	SUPERANNUATION CONTRIBUTIONS	218.48
DD34567.25	20/09/2016	KINETIC SUPERANNUATION LTD	SUPERANNUATION CONTRIBUTIONS	206.48
DD34567.26	20/09/2016	MLC MASTERKEY SUPER GOLD STAR VERSION ACCOUNT	SUPERANNUATION CONTRIBUTIONS	268.67
DD34567.27	20/09/2016	TWU SUPERANNUATION FUND	SUPERANNUATION CONTRIBUTIONS	226.24
DD34567.28	20/09/2016	BWMT SUPERANNUATION FUND	SUPERANNUATION CONTRIBUTIONS	223.55
DD34567.29	20/09/2016	MLC NAVIGATOR ACCESS SUPER & PENSION	SUPERANNUATION CONTRIBUTIONS	49.70
DD34567.30	20/09/2016	COLONIAL 1ST STATE SUPERANNUATION	SUPERANNUATION CONTRIBUTIONS	826.56
DD34567.31	20/09/2016	AUSTRALIAN SUPERANNUATION	SUPERANNUATION CONTRIBUTIONS	2986.38
DD34567.32	20/09/2016	MPJ (WA) PTY LTD	SUPERANNUATION CONTRIBUTIONS	553.09
DD34567.33	20/09/2016	BT SUPER FOR LIFE	SUPERANNUATION CONTRIBUTIONS	1564.66
DD34567.34	20/09/2016	PARSONS MC SUPERANNUATION FUND	SUPERANNUATION CONTRIBUTIONS	450.48

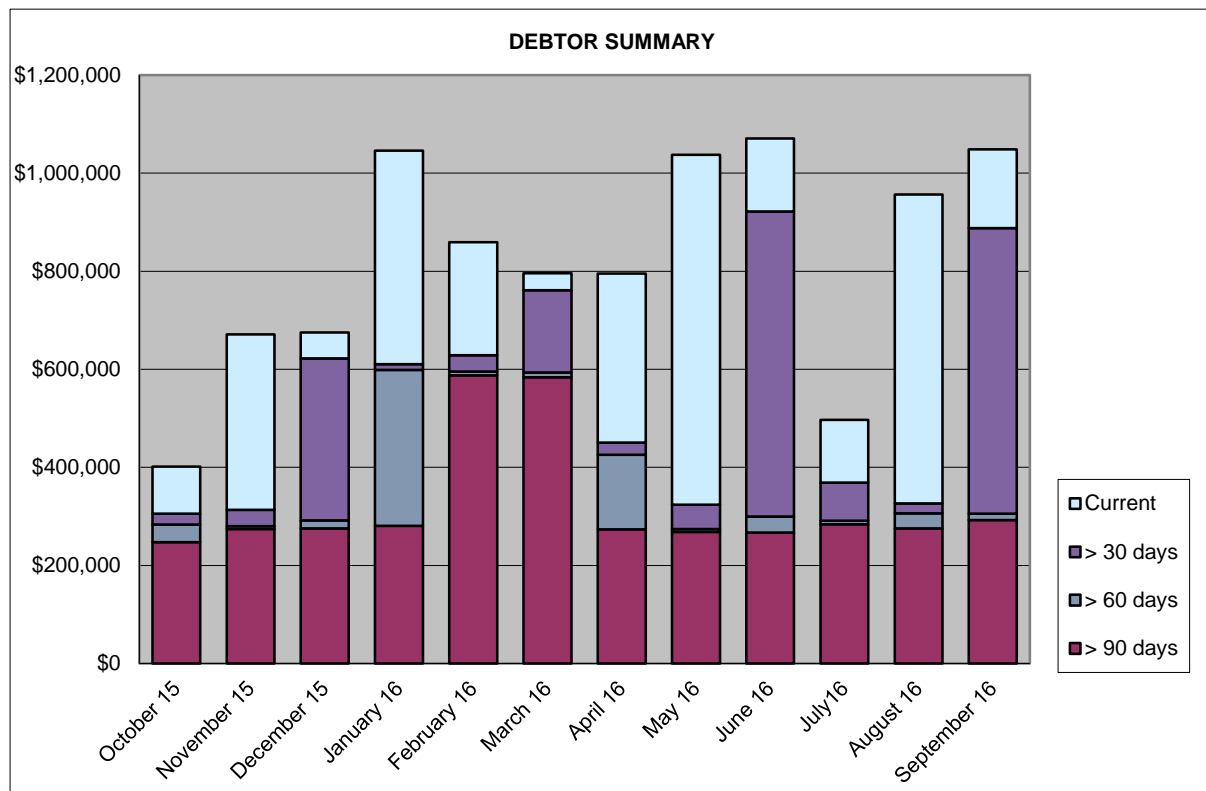
Chq/EFT	Date	Name	Description	Amount
DD34567.35	20/09/2016	ANZ SUPER ADVANTAGE	SUPERANNUATION CONTRIBUTIONS	335.48
				5388228.67
		Shire of Kalamunda Payroll		
F609070488734	06/09/2016	SHIRE OF KALAMUNDA PAYROLL	FOR THE PERIOD TO 6 SEPTEMBER 2016	568427.69
F609211128406	20/09/2016	SHIRE OF KALAMUNDA PAYROLL	FOR THE PERIOD TO 20 SEPTEMBER 2016	575771.07
				1144198.76

Attachment 2

SUMMARY OF DEBTORS FOR THE PERIOD ENDED 30 SEPTEMBER 2016

Sundry Debtors Trial Balance - Summary Aged Listing

	> 90 days	> 60 days	> 30 days	Current	Total
September 15	\$335,324	\$14,115	\$37,678	\$28,153	\$415,271
October 15	\$247,565	\$35,554	\$22,318	\$96,175	\$401,613
November 15	\$274,360	\$5,966	\$33,194	\$357,662	\$671,182
December 15	\$275,527	\$16,493	\$329,987	\$52,899	\$674,907
January 16	\$280,384	\$318,254	\$11,538	\$435,928	\$1,046,105
February 16	\$587,306	\$7,844	\$33,731	\$230,457	\$859,337
March 16	\$583,454	\$10,000	\$167,653	\$34,686	\$795,793
April 16	\$273,571	\$151,878	\$25,254	\$344,638	\$795,341
May 16	\$268,397	\$5,887	\$49,408	\$713,597	\$1,037,290
June 16	\$266,892	\$32,814	\$622,164	\$148,610	\$1,070,479
July16	\$283,740	\$7,089	\$77,695	\$128,229	\$496,753
August 16	\$275,295	\$30,628	\$20,609	\$629,991	\$956,522
September 16	\$292,333	\$12,868	\$582,765	\$160,338	\$1,048,303



SUMMARY OF DEBTORS FOR THE PERIOD ENDED 30 SEPTEMBER 2016			
AMOUNT	DEBTOR	DETAILS	STATUS
> 90 days			
\$258,930.49	DA Letizia	Developer Contribution	Account is currently with lawyers
\$3,825.38	Kalamunda Bulldogs Rugby	Reserve Hire	On-going financial issues. Club is fundraising for funds
\$2,855.73	Kalamunda Cricket Club	Operating Expenses	Partial write-off request going to A&R Committee in October
\$2,525.05	Beacon Homes Pty Ltd	Private Works	To refer to D&B – debtor not responding to correspondence
\$5,698.00	Evolution Cheer and Dance	Hall Hire	Paying instalments
\$4,198.97	Department of Education	Operational Expenses	Invoice and reminder invoice not received. Have now been in contact
\$1,210.00	High Wycombe Markets	Hall Hire	No longer trading – debtor still corresponding with commitments to pay
\$4,168.95	Telstra Corporation	Private Works	Not responding to correspondence
\$3,922.83	Water Corporation	Private Works	Query with Operations Centre regarding works
\$4,997.18	90+ Days Debts consisting of amounts under \$1,200.00	Predominately annual surveillance fees	Debtors to be contacted to advise debt recovery action / final notices issued / debt with D&B or possible write-off of debt pending
\$292,332.58	Total Debts 90+ Days		
> 60 days			
\$2,838.00	Shire of Wandering		Pending payment as original invoice not received
\$10,029.98	60+ Days Debts consisting of amounts under \$1,200.00		All debtors to be contacted by telephone / email - copy invoices mailed as required.
\$12,867.98	Total Debts 60+ Days		
> 30 days			
\$5,712.90	Code Group	BSL Levy - Building	Reminder invoice to mail
\$1,738.54	Kalamunda & Districts Junior Football	Operational Expenses - utilities etc	Reminder invoice to mail
\$293,990.00	Sundance Transport	Developer Contribution	Reminder invoice to mail
\$271,759.00	Terra Spei Pty Ltd	Developer Contribution	Reminder invoice to mail
\$9,564.50	30+ Days Debts consisting of amounts under \$1,200.00		Reminder invoices to mail.
\$582,764.94	Total Debts 30+ Days		

SUMMARY OF DEBTORS FOR THE PERIOD ENDED 30 SEPTEMBER 2016			
AMOUNT	DEBTOR	DETAILS	STATUS
< 30 days			
\$165,253.08	Total of Current Debts		
\$4,915.52	Total of Accounts in Credit		
\$1,048,303.06	Total - Debtors Trial Balance		
FOOTNOTES * Denotes currently in negotiation of invoice amount and details ^ Denotes payment arrangement in place			

Attachment 3

SUMMARY OF CREDITORS FOR THE PERIOD ENDED 30 SEPTEMBER 2016

Sundry Creditors Trial Balance - Summary Aged Listing

Month End	> 90 days	> 60 days	> 30 days	Current	Total
31/07/2015	\$1,100	\$2,200	\$81,330	\$570,084	\$654,714
31/08/2015	\$3,787	\$7,093	\$297,295	\$2,823,505	\$3,131,680
30/09/2015	\$20,875	\$24,891	\$91,014	\$621,133	\$757,913
31/10/2015	\$10,874	\$26,568	\$61,935	\$2,471,516	\$2,570,893
30/11/2015	\$13,246	\$1,716	\$38,818	\$531,081	\$584,862
31/12/2015	\$1,499	\$495	\$38,339	\$479,424	\$519,757
31/01/2016	\$0	\$142	\$4,604	\$266,856	\$271,602
29/02/2016	\$0	\$0	\$5,592	\$2,234,227	\$2,239,819
31/03/2016	\$4,425	\$3,857	\$57,452	\$859,578	\$925,312
30/04/2016	\$8,253	\$24,171	\$422,350	\$1,102,746	\$1,557,520
31/05/2016	\$55	\$29,996	\$158,655	\$1,693,540	\$1,882,246
30/06/2016	\$13,893	\$19,989	\$240,978	\$3,607,637	\$3,882,496
31/07/2016	\$0	\$4,210	\$762	\$734,480	\$739,452
31/08/2016	\$26,903	\$3,465	\$30,621	\$880,029	\$941,019
30/09/2016	\$715	\$15,405	\$21,130	\$918,399	\$955,649

Comment

- > 90 days Original Invoices not received for The It Vision User Group in Accounts to process.
- > 60 days Original Invoices not received for Keynote Conferences, Constable Child Safety Foundation Inc and ID Consulting in Accounts to process.
- > 30 days These invoices are paid on the third fortnightly payment run.

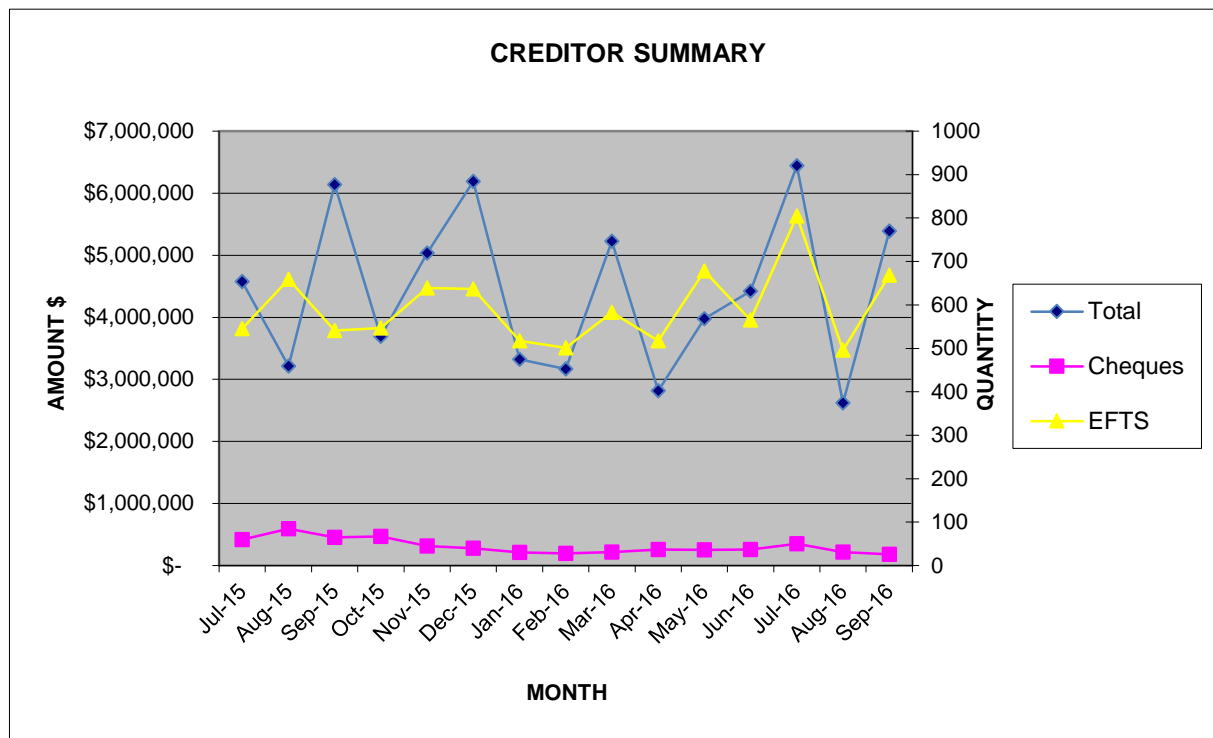
Creditor Payments made

Month	Amount \$	Quantity		
		Cheques	EFTs	Total
Jul-15	\$4,574,236	60	545	605
Aug-15	\$3,213,086	85	659	744
Sep-15	\$6,139,271	65	541	606
Oct-15	\$3,693,763	67	547	614
Nov-15	\$5,036,934	45	639	684
Dec-15	\$6,191,992	40	637	677
Jan-16	\$3,321,829	30	517	547
Feb-16	\$3,164,940	28	501	529
Mar-16	\$5,224,103	31	583	614
Apr-16	\$2,816,800	37	517	554
May-16	\$3,978,417	36	678	714
Jun-16	\$4,418,758	37	565	602
Jul-16	\$6,442,728	50	805	855
Aug-16	\$2,620,389	31	496	527
Sep-16	\$5,388,229	26	668	694

*Excludes net staff payroll

*Creditors on 30 day terms are paid on the 28th of the month following.

*Local suppliers are paid on 14 day terms.



Declaration of financial / conflict of interests to be recorded prior to dealing with each item.

10.3.2 Rates Debtors Report for the Period Ended 30 September 2016

Previous Items	N/A
Responsible Officer	Director Corporate and Community Services
Service Area	Finance
File Reference	FI-DRS-004
Applicant	N/A
Owner	N/A

Attachment 1 Summary of Outstanding Rates for the period ended 30 September 2016

PURPOSE

1. To receive the report on rates debtors for the period ended 30 September 2016 (Attachment 1).

BACKGROUND

2. Rates notices were issued on 11 July 2016 with the following payment options:-

Options	Payment Dates			
Full Payment	16 August 2016			
Two Instalments	16 August 2016	16 December 2016		
Four Instalments	16 August 2016	17 October 2016	16 December 2016	17 February 2017

3. A total of 23,571 Rate Notices were sent on 11 July 2016. Rates Levied & Collectable for the 2016/17 Financial Year currently total \$33,111,586. Of this amount, \$16,399,836 has been collected as at 30 September 2016. This represents a collection rate of 50.28% which is below the collection on 57.54% in the 2015/16 Financial Year. The current lower collection rate is primarily due to the increased number of ratepayers opting for either the instalment or direct debit payment options. It is anticipated that the collection rate will increase during February/March 2017 when the instalment and direct debit arrangements are finalised.
4. A total of 9,242 ratepayers have taken up an instalment option so far. Of these, 1,924 selected the option to pay by two instalments and 7,318 selected the option to pay by four instalments.

5. Three additional services were introduced to better assist ratepayers in paying their amounts due. These are:
 - A Smarter Way to Pay – to date approximately 483 ratepayers have signed up.
 - eRates – To date there are 1,898 properties signed up for electronic delivery. This represents approximately 8% of the rates database; and
 - BPay View – To date 158 ratepayers have signed up for this service.
6. The raising of Interim Rates for the 2016/17 financial year will commence following the finalisation of Rebate Fee Refunds and it is anticipated this will be bought up to date by January 2017.

DETAILS

Debt Recovery

7. There are a number of outstanding claims for the 2015/16 and previous years that were put on hold pending the approval of the Debt Recovery Policy, finalised in May 2016. Following the start of Debt Recovery for 2016/17, these accounts will be reviewed and follow up action will occur.
8. The Shire will begin debt recovery with the sending of a Final Notice to all accounts with a balance owing where the account is not paying by instalments or on a Direct Debit or other arrangement. It is expected that Final Notices will be sent in mid-October 2016.
9. There are four properties in the Shire with outstanding amounts since 2012/13 and 2013/14 that are in the process of having a PSSO (Property Seizure and Sales Order) re-issued on the Land in line with the Council Debt Collection Policy. Councillors will be briefed before the bailiff places the properties on auction.

STATUTORY AND LEGAL CONSIDERATIONS

10. The Shire collects its rates debts in accordance with the *Local Government Act (1995) Division 6 – Rates and Service Charges under the requirements of subdivision 5 – Recovery of unpaid rates and service charges.*

POLICY CONSIDERATIONS

11. Nil.

COMMUNITY ENGAGEMENT REQUIREMENTS

12. Nil.

FINANCIAL CONSIDERATIONS

13. The early raising of rates in July has allowed the Shires operations to commence without delays in addition to earning additional interest income.

STRATEGIC COMMUNITY PLAN

Strategic Planning Alignment

14. *Kalamunda Advancing: Strategic Community Plan to 2023*

OBJECTIVE 6.8 – To ensure financial sustainability through the implementation of effective financial management, systems and plans.

Strategy 6.8.4 Provide effective financial services to support the Shire's operations and to meet sustainability planning, reporting and accountability requirements.

SUSTAINABILITY

Social Implications

15. Debt collection can have implications upon those ratepayers facing hardship and the Shire must ensure equity in its debt collection policy and processes.
16. The Shire has introduced "a smarter way to pay" to ease the financial hardship.

Economic Implications

17. Effective collection of all outstanding debtors leads to enhanced financial sustainability for the Shire.

Environmental Implications

18. The increase in eRates will contribute to lower carbon emissions as there is no printing and postage involved.

RISK MANAGEMENT CONSIDERATIONS

- 19.
- | Risk | Likelihood | Consequence | Rating | Action/Strategy |
|--|------------|-------------|--------|--|
| The Shire is exposed to the potential risk of the ratepayer failing to make payments which it is obligated to do. This will result in the disruption of cash flows and increased collection costs. | Possible | Major | High | Ensure debt collections is rigorously managed. |

OFFICER COMMENT

20. The Shire's debt collection strategy has proven to be very effective with a 97.79% collection rate in the 2015/16 financial year. While it is noted that the September 2016 collection is much lower than last year's comparative rate, it is too early to indicate any trends. It is expected that there will be a catch up in the following months with the final instalment and Direct Debit due date of February 2017.

Voting Requirements: Simple Majority

RESOLVED OCM 173/2016

That Council:

1. Receives the rates debtors report for the period ended 30 September 2016 (Attachment 1).

Moved: **Cr Geoff Stallard**

Seconded: **Cr Simon Di Rosso**

Vote: **CARRIED UNANIMOUSLY (11/0)**

Attachment 1

SUMMARY OF OUTSTANDING RATES FOR THE PERIOD ENDED 31 SEPTEMBER 2016

Rates Outstanding Debtors

	3rd Previous Year + Outstanding	2nd Previous Year Outstanding	Previous Year Outstanding	Current Outstanding	Total Outstanding	Previous Year Total Outstanding
30-Jun-16	Balance Forward				\$1,226,895	\$856,619
31-Jul-16	\$427,328	\$154,101	\$541,879	\$29,791,711	\$30,915,019	\$28,087,404
31-Aug-16	\$417,926	\$147,343	\$412,837	\$16,869,361	\$17,847,467	\$16,507,447
30-Sep-16	\$409,590	\$142,916	\$380,432	\$15,778,812	\$16,711,750	\$14,215,042
31-Oct-16						\$11,552,148
30-Nov-16						\$9,923,670
31-Dec-16						\$6,116,690
31-Jan-17						\$4,660,900
28-Feb-17						\$1,972,047
31-Mar-17						\$1,723,981
30-Apr-17						\$1,654,964
31-May-17						\$1,630,369
30-Jun-17						\$1,226,895

Rates Outstanding as at 30/06/2016

\$1,226,895

Rate Levied 2016/2017

Interim 2016/2017

Back Rates

\$31,884,691

\$0

\$0

Total Levies To Date for 2016/2017

\$31,884,691

Total Collectable

\$33,111,586

Total Collected to date

\$16,399,836

Total Rates Outstanding

\$16,711,750

Current Deferred Rates Amount (from Rate Reports)

\$492,953

Total Rates amount to be collected not including deferred

\$16,218,797

% of Rates Outstanding:

49.72%

% of Rates Collected:

50.28%

Comment

The 2016/17 Instalment Dates are as follows:

	4x instalments	2x instalments
1st Instalment	16/08/2016	16/08/2016
2nd Instalment	17/10/2016	16/12/2016
3rd Instalment	16/12/2016	
4th Instalment	17/02/2017	

Declaration of financial / conflict of interests to be recorded prior to dealing with each item.

10.3.3 Draft Monthly Financial Statements to 30 September 2016

Previous Items	N/A
Responsible Officer	Director Corporate and Community Services
Service Area	Finance
File Reference	FIR-SRR-006
Applicant	N/A
Owner	N/A
Attachment 1	Draft Statements of Financial Activity for the period ended 30 September 2016 incorporating the following: <ul style="list-style-type: none">• Statement of Financial Activity (Nature or Type)• Statement of Financial Activity (Statutory Reporting Program)• Net Current Funding Position, note to financial statement

PURPOSE

1. To provide Council with statutory financial reports on the activity of the Shire of Kalamunda with comparison of the year's performance against the 30 June 2017 annual budget adopted on 20 June 2016.

BACKGROUND

2. The Statement of Financial Activity (Attachment 1), incorporating various sub-statements, has been prepared in accordance with the requirement of the *Local Government Act 1995*, Regulation 34 of the *Local Government (Financial Management) Regulations 1996*.
3. The opening funds in the Statement of Financial Activity reflects the un-audited surplus brought forward from 2015/16. The annual audit of the Financials has now reached the review stage and is expected to issue the final audit report by the end of October 2016.
4. The budget column reflects the budget approved by Council at its meeting on 20 June 2016.
5. The draft report provided includes the un-audited opening surplus position and is subject to change as:
 - Audit adjustments are awaiting the final audit by the External Auditors, Grant Thornton. The main adjustment relates to the agreed movements on revaluation on plant and equipment and infrastructure assets.

DETAILS

6. The *Local Government Act 1995* requires Council to adopt a percentage or value to be used in reporting variances against Budget. Council has adopted the reportable variances of 10% or \$50,000 whichever is greater.

Financial Commentary

Draft Statement of Financial Activity by Nature and Type for the three months ended 30 September 2016

7. This Statement reveals a net result surplus of \$44,949,499 compared to budget for the same period of \$40,683,431. The majority of the variance of \$4,266,069 is in the areas of operating expenditure, infrastructure projects and the opening surplus position.

Revenue

8. Total Revenue excluding rates is over budget by \$336,708. This is made up as follows:
- Operating Grants, Subsidies and Contributions are over budget by \$247,581. The variances are primarily timing issues, and made up of the following:
 - \$137,471 HACC first quarter grant payments.
 - \$121,670 received from Department of Sports and Recreation for the Kids Sports programme.
 - Fees and Charges variance is over budget by \$116,086. This is mainly attributable to:
 - \$219,940 the receipt of refuse collection fees which relates to the 2016/17 waste fees issued with the rates notices.
 - Interest Income is under budget by \$36,079. This is primarily due to more ratepayers choosing to pay by either instalment options or direct debit payment arrangements.
 - Other Revenue is under budget by \$1,775. This variance is within the reporting threshold.

Expenditure

9. Total expenses is under budget with a variance of \$968,453. The significant variances within the individual categories are as follows:
- Employment Costs are under budget by \$314,924 which is primarily due to vacant positions not filled following the restructure.
 - Materials and Contracts is under budget by \$607,720 and is mainly attributable to timing issues in the infrastructure and maintenance area.
 - Utilities are under budget by \$83,020 which is related mainly to telephony costs. The Shire has recently renegotiated a new contract with Telstra that is expected to reduce costs. The first term Budget Review will provide an opportunity to revise this budget.

- Depreciation, although a non-cash cost, is tracking over budget, reporting a variance of \$68,495. The depreciation expenditure on the infrastructure category will be reviewed at the first term budget review.
- Interest expense is under budget by \$4,434. This is a result of a timing difference between amounts accrued and the budget which is based on the debenture payments schedules.
- Insurance expense is under budget by \$12,499. The variance is within the reporting threshold.
- Other expenditure is under budget by \$3,641. These relate mainly to non-recurrent expenditure and attributable to a timing issues.
- Loss on disposal of Asset is under budget by \$10,710. The variance is within the reporting threshold.

Capital Revenues

Non-operating Grants and Contributions

10. The non-operating grants and contributions are over budget by \$643,556. This is mainly attributable to:
- Receipt of \$114,590 for the Roads to Recovery programme during August relating to the prior 2015/16 period.
 - Main Roads WA direct grant received during September \$257,143.

Capital Expenditures

11. The total Capital Expenditure on Property, Plant and Equipment and Infrastructure Assets are under budget by \$1,312,345. The Shire's schedule of works for the upcoming year commenced in August 2016 with expenditure expected to increase in the coming months prior to the Christmas break. In addition, the progress of the infrastructure projects will be reviewed at the first term budget review in October.

Rates revenues

12. Rates generation is under budget with a variance of \$9,513. The budgeted rates revenue takes into account interim rates that are expected over the year and will be phased in accordingly for the remaining months.

Draft Statement of Financial Activity by Program for the year ended 30 September 2016

13. The overall result comments are as above and generally each Program is within the accepted budget except for Other property services, Community Amenities and Recreation and Culture. Major variances have been reported by Nature and Type under points 7 to 12 above.

Draft Statement of Net Current Funding Position as at 30 September 2016

14. The commentary on the net current funding position is based on comparison of the draft September 2016 actuals with September 2015 actuals.
15. Net Current Assets (Current Assets less Current Liabilities) show a positive result of \$55.8 million. The un-restricted cash position has a positive balance of \$31.7 million which is lower than the previous year's balance of \$32.3 million. The current lower cash position is mainly due to the increased number of ratepayers opting for either the instalment or direct debit payment options.
16. Trade and other receivables outstanding comprise rates and sundry debtors totalling \$17.4 million.
- The rates balance increased by \$2.5 million from last year which reflects increases in rates generation related to various factors including interim rates, back rates and the differential rate increases. The balance was anticipated to reduce significantly with the first instalment date on 16 August 2016 however it was observed that the collection rate is tracking slightly lower than 2015/16. This is attributed to more ratepayers choosing to pay by either instalment options or direct debit payment arrangements. The impact of this is cash inflow will be drawn out rather than the bulk being received in the first two months of the financial year.
17. Sundry debtors have increased from \$415,271 to \$1,048,303, of which \$165,253 consists of current debt due within 30 days. A total of \$292,333 remains outstanding over 90 days. The majority of this debt consists of an invoice which is overdue from the developers of the Forrestfield Industrial Area. These overdue amounts are currently subject to recovery action.
18. Receivables Other represents \$4.1 million comprising mainly of:
- Emergency Service Levy receivables \$2.4 million; and
 - Waste charges receivables - \$1.9 million.
19. Provisions for annual and long service leave are generally higher having increased by \$331,707 to \$2.9 million when compared to the previous year. The reasons for the increase is due to more officers being above the seven year threshold at which point long service leave entitlements begin to fully accrue. The Shire aggressively pursues a leave management plan that will not adversely affect service delivery. The long term goal is to bring this liability down to a more manageable level and also ensure there are adequate cash backed reserves in place to support it.
20. Restricted Reserves have increased significantly from \$5.7 million to \$13.8 million when compared to September 2015. The increase is due to the following:
- Forrestfield Industrial Area Scheme Stage 1 has increased by \$2.6 million.

- Long Service Leave and Nominated Employee Leave Provisions increased by \$1.1 million to address the exposure mentioned in point 19 above.
- Minor changes are also noted with the following reserves:
 - Asset Enhancement Reserve has increased by \$0.9 million.
 - EDP IT Equipment Reserve has increased by \$0.4 million.
 - Waste Reserve has increased by \$0.6 million to recognise surplus in operating income in 2014/15.
 - Land and Property Enhancement and Maintenance Reserve has increased by \$0.2 million.

STATUTORY AND LEGAL CONSIDERATIONS

21. The *Local Government Act 1995* and the *Local Government (Financial Management) Regulations 1996* require presentation of a monthly statement of financial activity.

POLICY CONSIDERATIONS

22. Nil.

COMMUNITY ENGAGEMENT REQUIREMENTS

23. Nil.

FINANCIAL CONSIDERATIONS

24. The Shire's financial position needs to be closely monitored to ensure it is operating sustainably and to allow for future capacity.

STRATEGIC COMMUNITY PLAN

Strategic Planning Alignment

25. *Kalamunda Advancing: Strategic Community Plan to 2023*

OBJECTIVE 6.8 – To ensure financial sustainability through the implementation of effective financial management, systems and plans.

Strategy 6.8.4 Provide effective financial services to support the Shire's Operations and to meet sustainability planning, reporting and accountability requirements.

SUSTAINABILITY

Social Implications

26. Nil.

Economic Implications

27. Nil.

Environmental Implications

28. Nil.

RISK MANAGEMENT CONSIDERATIONS

29.

Risk	Likelihood	Consequence	Rating	Action/Strategy
Over-spending the budget	Possible	Major	High	Monthly management reports are reviewed by the Shire. Weekly engineering reports on major projects and maintenance.
Non-compliance with Financial Regulations	Unlikely	Major	Medium	The financial report is scrutinised by the Shire to ensure that all statutory requirements are met.

OFFICER COMMENT

30. The Shire's draft financial statements as at 30 September 2016 demonstrate the Shire has managed its budget and financial resources effectively.

Voting Requirements: Simple Majority

RESOLVED OCM 1734/2016

That Council:

1. Receives the draft Monthly Statutory Financial Statements for the period to 30 September 2016, which comprises:
 - Statement of Financial Activity (Nature or Type).
 - Statement of Financial Activity (Statutory Reporting Program).
 - Net Current Funding Position, note to financial statement.

Moved: **Cr Sara Lohmeyer**

Seconded: **Cr Dylan O'Connor**

Vote: **CARRIED UNANIMOUSLY (11/0)**

Attachment 1

STATEMENT OF FINANCIAL ACTIVITY BY NATURE OR TYPE FOR THE THREE MONTHS ENDED 30 SEPTEMBER 2016

	30/09/2016	30/09/2016			
	YTD	YTD	Annual	Var. \$	Var. %
	Actual	Budget	Budget	(b)-(a)	(b)-(a)/(b)
	(b)	(a)			
	\$	\$	\$	\$	%
Operating Revenues					
Operating Grants and Subsidies	1,589,273	1,333,053	5,343,747	256,220	16.1%
Contributions, Reimbursements and Donations	176,485	185,124	4,707,698	(8,639)	(4.9%)
Profit on Asset Disposal	10,895	0	0	10,895	100.0%
Fees and Charges	12,125,028	12,008,942	14,817,455	116,086	1.0%
Interest Earnings	346,874	382,953	1,187,756	(36,079)	(10.4%)
Other Revenue	13,753	15,528	62,144	(1,775)	(12.9%)
Ex Gratia Rates Revenue	0	0	133,570	0	
Total (Excluding Rates)	14,262,308	13,925,600	26,252,370	336,708	
Operating Expense					
Employee Costs	(5,555,831)	(5,870,755)	(24,277,622)	314,924	5.7%
Materials and Contracts	(4,938,771)	(5,546,491)	(21,550,878)	607,720	12.3%
Utilities Charges	(535,638)	(618,658)	(2,457,698)	83,020	15.5%
Depreciation (Non-Current Assets)	(1,915,727)	(1,847,232)	(7,389,258)	(68,495)	(3.6%)
Interest Expenses	(92,946)	(97,380)	(389,523)	4,434	4.8%
Insurance Expenses	(323,932)	(336,431)	(593,911)	12,499	3.9%
Loss on Asset Disposal	0	(10,710)	(42,843)	10,710	100.0%
Other Expenditure	(135,792)	(139,433)	(531,043)	3,641	2.7%
Total	(13,498,637)	(14,467,090)	(57,232,776)	968,453	
Operating activities excluded					
Depreciation on asset disposals	1,915,727	1,847,232	7,389,258	68,495	3.6%
(Profit)/Loss on Asset Disposal	(10,895)	10,710	42,843	(21,605)	198.3%
EMRC Contribution (Non-cash)	0	0	(3,888,440)	0	
Deferred Loan (non-current) FUSC	0	0	(479)	0	
Movement in Provisions	(11,137)	0	673,003	(11,137)	100.0%
Pensioners Deferred Rates Movement	0	0	(32,000)	0	
Total	1,893,695	1,857,942	4,184,185	35,753	
Net Operating (Ex. Rates)	2,657,366	1,316,452	(26,796,221)	1,340,914	
Investing Activities					
Proceeds from Disposal of Assets	10,895	0	50,000	10,895	100.0%
Grants, Subsidies and Contributions	997,539	353,983	3,539,835	643,556	64.5%
Land and Buildings New	(126,983)	(293,170)	(1,657,483)	166,187	(130.9%)
Land and Buildings Replacement	(383,035)	(304,849)	(2,857,021)	(78,186)	20.4%
Plant and Equipment New	(21,701)	(21,500)	(31,500)	(201)	0.9%
Plant and Equipment Replacement	0	(70,400)	(250,000)	70,400	(100.0%)
Furniture and Equipment	(1,716)	(116,532)	(466,150)	114,816	(6690.9%)
Infrastructure Assets - Roads New	(19,840)	(162,881)	(1,536,641)	143,041	(721.0%)
Infrastructure Assets - Roads Renewal	(169,886)	(504,282)	(2,458,252)	334,396	(196.8%)
Infrastructure Assets - Drainage New	(25,640)	(148,475)	(1,484,738)	122,835	(479.1%)
Infrastructure Assets - Drainage Renewal	(28,834)	(20,383)	(104,805)	(8,451)	29.3%
Infrastructure Assets - Footpaths New	(92,892)	(33,422)	(334,212)	(59,470)	64.0%
Infrastructure Assets - Footpaths Renewal	(3,946)	(18,633)	(186,320)	14,687	(372.2%)

**STATEMENT OF FINANCIAL ACTIVITY BY NATURE OR TYPE
FOR THE THREE MONTHS ENDED 30 SEPTEMBER 2016**

	30/09/2016	30/09/2016			
	YTD Actual (b) \$	YTD Budget (a) \$	Annual Budget \$	Var. \$ (b)-(a) \$	Var. % (b)- (a)/(b) %
Infrastructure Assets - Car Parks New	(31,764)	(110,919)	(1,109,165)	79,155	(249.2%)
Infrastructure Assets - Car Parks Renewal	5,619	(15,686)	(273,309)	21,305	379.2%
Infrastructure Assets - Parks and Ovals New	(21,190)	(263,471)	(2,508,702)	242,281	(1143.4%)
Infrastructure Assets - Parks and Ovals Renewal	(8,909)	(158,459)	(1,182,670)	149,550	(1678.6%)
Amounts attributable to investing activities	77,717	(1,889,079)	(12,851,132)	1,966,796	
Financing Activities					
Repayment of Debentures	(258,877)	(157,440)	(629,779)	(101,437)	(39.2%)
Self-Supporting Loan Principal	17,817	18,069	72,302	(252)	(1.4%)
Proceeds from new debentures	0	0	500,000	0	
Capital (Developer) - Contributions	597,628	600,000	600,000	(2,372)	(0.4%)
Transfer from Reserves	5,018,414	5,000,000	7,747,580	18,414	0.4%
Transfer to Reserves	(666,327)	(623,805)	(2,899,268)	(42,522)	(6.4%)
Amounts attributable to financing activities	4,708,655	4,836,824	5,390,835	(128,169)	
Total Net Operating + Capital	7,443,740	4,264,197	(34,256,515)	3,179,543	
Rate Revenue	33,127,488	33,137,001	34,264,515	(9,513)	(0.0%)
Opening Funding Surplus(Deficit)	4,378,271	3,282,233	3,282,233	1,096,038	25.0%
Closing Funding Surplus(Deficit)	44,949,499	40,683,431	3,290,232	4,266,069	9.5%

**STATEMENT OF FINANCIAL ACTIVITY (STATUTORY REPORTING PROGRAM)
FOR THE THREE MONTHS ENDED 30 SEPTEMBER 2016**

	30/09/2016	30/09/2016			
	YTD	YTD	Annual	Var. \$	Var. %
	Actual	Budget	Budget	(b)-(a)	(b)-(b)
	(b)	(a)			(a)/(b)
	\$	\$	\$	\$	%
Operating Revenues					
Governance	0	28,572	114,298	(28,572)	(100.0%)
General Purpose Funding	1,039,922	1,059,607	7,956,748	(19,685)	(1.9%)
Law, Order and Public Safety	60,958	66,564	431,318	(5,606)	(9.2%)
Health	327,301	315,877	350,461	11,424	3.5%
Education and Welfare	1,048,498	860,145	3,422,196	188,353	18.0%
Community Amenities	11,013,607	10,788,463	11,277,230	225,144	2.0%
Recreation and Culture	426,912	394,304	1,701,532	32,608	7.6%
Transport	1,902	0	0	1,902	100.0%
Economic Services	279,043	298,221	543,121	(19,178)	(6.9%)
Other Property and Services	64,166	113,847	455,467	(49,681)	(77.4%)
Total (Excluding Rates)	14,262,309	13,925,600	26,252,371	336,709	
Operating Expense					
Governance	(819,417)	(759,249)	(3,408,045)	(60,168)	(7.3%)
General Purpose Funding	(260,067)	(268,383)	(826,514)	8,316	3.2%
Law, Order and Public Safety	(424,917)	(458,112)	(1,847,559)	33,195	7.8%
Health	(305,111)	(317,229)	(1,292,280)	12,118	4.0%
Education and Welfare	(926,384)	(978,129)	(3,906,182)	51,745	5.6%
Community Amenities	(3,281,345)	(3,482,771)	(14,444,780)	201,426	6.1%
Recreation and Culture	(4,112,013)	(4,591,488)	(18,294,746)	479,475	11.7%
Transport	(2,764,207)	(2,645,384)	(10,594,850)	(118,823)	(4.3%)
Economic Services	(278,834)	(265,552)	(1,122,265)	(13,282)	(4.8%)
Other Property and Services	(326,341)	(700,793)	(1,495,556)	374,452	114.7%
Total	(13,498,636)	(14,467,090)	(57,232,777)	968,454	
Operating activities excluded					
Depreciation on asset disposals	1,915,727	1,847,232	7,389,258	68,495	3.6%
(Profit)/Loss on Asset Disposal	(10,895)	10,710	42,843	(21,605)	198.3%
EMRC Contribution (Non-cash)	0	0	(3,888,440)	0	
Deferred Loan (non-current) FUSC	0	0	(479)	0	
Movement in Provisions	(11,137)	0	673,003	(11,137)	100.0%
Pensioners Deferred Rates					
Movement	0	0	(32,000)	0	
Total	1,893,695	1,857,942	4,184,185	35,753	
Net Operating (Ex. Rates)	2,657,368	1,316,452	(26,796,221)	1,340,916	
Investing Activities					
Proceeds from Disposal of Assets	10,895	0	50,000	10,895	100.0%
Non-operating grants, subsidies and contributions	997,539	353,983	3,539,835	643,556	64.5%
Land Held for Resale	0	0	0	0	
Land Development Costs	0	0	0	0	
Land and Buildings New	(126,983)	(293,170)	(1,657,483)	166,187	(130.9%)
Land and Buildings Replacement	(383,035)	(304,849)	(2,857,021)	(78,186)	20.4%
Plant and Equipment New	(21,701)	(21,500)	(31,500)	(201)	0.9%
Plant and Equipment Replacement	0	(70,400)	(250,000)	70,400	(100.0%)
Furniture and Equipment	(1,716)	(116,532)	(466,150)	114,816	(6690.9%)
Infrastructure Assets - Roads New	(19,840)	(162,881)	(1,536,641)	143,041	(721.0%)

**STATEMENT OF FINANCIAL ACTIVITY (STATUTORY REPORTING PROGRAM)
FOR THE THREE MONTHS ENDED 30 SEPTEMBER 2016**

	30/09/2016	30/09/2016			
	YTD Actual (b) \$	YTD Budget (a) \$	Annual Budget \$	Var. \$ (b)-(a) \$	Var. % (b)-(a)/(b) %
Infrastructure Assets - Roads Renewal	(169,886)	(504,282)	(2,458,252)	334,396	(196.8%)
Infrastructure Assets - Drainage New	(25,640)	(148,475)	(1,484,738)	122,835	(479.1%)
Infrastructure Assets - Drainage Renewal	(28,834)	(20,383)	(104,805)	(8,451)	29.3%
Infrastructure Assets - Footpaths New	(92,892)	(33,422)	(334,212)	(59,470)	64.0%
Infrastructure Assets - Footpaths Renewal	(3,946)	(18,633)	(186,320)	14,687	(372.2%)
Infrastructure Assets - Car Parks New	(31,764)	(110,919)	(1,109,165)	79,155	(249.2%)
Infrastructure Assets - Car Parks Renewal	5,619	(15,686)	(273,309)	21,305	379.2%
Infrastructure Assets - Parks and Ovals New	(21,190)	(263,471)	(2,508,702)	242,281	(1143.4%)
Infrastructure Assets - Parks and Ovals Renewal	(8,909)	(158,459)	(1,182,670)	149,550	(1678.6%)
Amounts attributable to investing activities	77,717	(1,889,079)	(12,851,132)	1,966,796	
Financing Activities					
Self-Supporting Loan Principal Income	17,817	18,069	72,302	(252)	(1.4%)
Proceeds from new debentures		0	500,000	0	
Capital (Developer) - Contributions	597,628	600,000	600,000	(2,372)	(0.4%)
Transfer from Reserves	5,018,414	5,000,000	7,747,580	18,414	0.4%
Capital Contributions and Grants Owing	0	0	0	0	
Repayment of Debentures	(258,877)	(157,440)	(629,779)	(101,437)	(39.2%)
Overdraft Funds (Repayment)	0	0	0	0	
Transfer to Reserves	(666,327)	(623,805)	(2,899,268)	(42,522)	(6.4%)
Amounts attributable to financing activities	4,708,655	4,836,824	5,390,835	(128,168)	
Total Net Operating + Capital	7,443,740	4,264,197	(34,256,516)	3,179,544	
Rate Revenue	33,127,488	33,137,001	34,264,515	(9,513)	(0.0%)
Opening Funding Surplus(Deficit)	4,378,271	3,282,233	3,282,233	1,096,038	25.0%
Closing Funding Surplus(Deficit)	44,949,499	40,683,431	3,290,232	4,266,069	9.5%

**NOTES TO AND FORMING PART OF THE FINANCIAL REPORT
FOR THE THREE MONTHS ENDED 30 SEPTEMBER 2016**

NET CURRENT FUNDING POSITION

Positive=Surplus (Negative=Deficit)

	30/09/2016	30/09/2015
	\$	\$
Current Assets		
Cash and Cash Equivalents (Unrestricted)	31,692,112	32,301,130
Cash and Cash Equivalents - Reserves (Restricted)	13,808,303	5,666,081
Receivables - Rates	16,323,896	13,798,424
Receivables - Sundry	1,048,303	415,271
Receivables -Other	4,076,030	3,597,151
Inventories	138,965	86,418
(*exclude loan receivable)	67,087,610	55,864,474
Less: Current Liabilities		
Payables	(8,329,808)	(7,653,254)
Provisions	(2,981,475)	(2,649,768)
(*exclude loan payable)	(11,311,283)	(10,303,022)
Net Current Asset Position	55,776,326	45,561,453
Add:		
Provision for Long Service Leave	1,341,231	1,140,398
Provision for Annual Leave	1,640,244	1,509,371
Less:		
Cash and Cash Equivalents - Reserves (Restricted)	(13,808,303)	(5,666,081)
Net Current Funding Position	44,949,499	42,545,140

Declaration of financial / conflict of interests to be recorded prior to dealing with each item.

10.3.4 Proposed Carport to a Single House – Lot 226 (13) Palm Terrace, Forrestfield

Previous Items	Nil
Responsible Officer	Director Development Services
Service Area	Approval Services
File Reference	PL-01/013
Applicant	The Patio Factory
Owner	Ross and Maria Hall
Attachment 1	Site and Elevation Plan
Attachment 2	Locality Plan
Attachment 3	Site Photographs

PURPOSE

1. To consider a planning application for a proposed carport to a single house at Lot 226 (13) Palm Terrace, Forrestfield (subject site).

BACKGROUND

2. **Land Details:**

Land Area:	714m ²
Local Planning Scheme Zone	Residential R20
Metropolitan Regional Scheme Zone:	Urban

3. In late-June 2016, the Shire received an application for a carport on the subject site. An assessment of the application identified variations to standard requirements, in relation to the primary street setback, side setback and driveway width.
4. The subject site is located roughly in the middle of Palm Terrace, within the suburb of Forrestfield. The subject site is shown in more detail below, noting that the depicted front carport has since been demolished.

Locality Plan

5.



DETAILS

6. The applicant has advised that the proposal is for a carport to accommodate a caravan (Attachment 1), which has resulted in the carport requiring a 1.2m front boundary setback.
7. In mid-July, advertising to the neighbours was completed, and the applicant provided amended plans and a justification. The front setback was increased from 1.2m to 1.5m, however this remains non-compliant.

The deemed to comply requirements of the Residential Design Codes (R Codes) are detailed below. Note that where a proposal does not meet the deemed to comply requirements, the proposal must be assessed against the relevant design principles.

8.

Issue	Deemed-to-Comply Provision	Proposed	Design Principle Assessment
Front setback-minimum	3.0m	1.5m	-1.5m
Front setback-average	6.0m	5.55m	-0.45m
Side setback	1.5m	nil	-1.5m
Wall height	6.0m	3.2m	None

STATUTORY AND LEGAL CONSIDERATIONS

Planning and Development (Local Planning Schemes) Regulations 2015

9. In considering an application for planning approval, Clause 67 of *The Planning and Development (Local Planning Schemes) Regulations 2015* (the Regulations) requires Council to have due regard to a number of matters, including:
- *The compatibility of the development within its settings;*
 - *Amenity in the locality;*

Planning and Development Act 2005

10. In the event that Council does not support the proposed development, there is a right of review (appeal) to the State Administrative Tribunal under part 14 of the *Planning and Development Act 2005*.

POLICY CONSIDERATIONS

State Planning Policy 3.1 – Residential Design Codes of WA

11. Under the R-Codes, a carport is defined as follows:

'Carport – A roofed structure designed to accommodate one or more motor vehicles unenclosed except to the extent that it abuts a dwelling or a property on one side, and being without a door unless that door is visually permeable.'

COMMUNITY ENGAGEMENT REQUIREMENTS

12. The proposal was advertised for a period of 14 days, and involved letters being sent to the adjoining side neighbour. No responses were received.

FINANCIAL CONSIDERATIONS

13. Nil.

STRATEGIC COMMUNITY PLAN

Strategic Planning Alignment

14. *Kalamunda Advancing: Strategic Community Plan to 2023*

OBJECTIVE 4.3 – To ensure the Shire's development is in accord with the Shire's statutory and legislative obligations and accepted urban design planning standards.

Strategy 4.3.2 – Undertake efficient monitoring and compliance of building developments within the Shire.

SUSTAINABILITY

Social Implications

15. The presence of the extended carport within the primary street setback area may cause an undue impact upon the visual amenity of the streetscape.

Economic Implications

16. Nil.

Environmental Implications

17. Nil.

RISK MANAGEMENT CONSIDERATIONS

18.

Risk	Likelihood	Consequence	Rating	Action/Strategy
Approval of structures that are not in keeping with the streetscape, degrade it and encourage similar development in the future.	Possible	Minor	Medium	Ensure Council is aware of the risks.

OFFICER COMMENT

Front Setback

19.

Front Setback Requirement	Deemed-to-Comply Provision	Proposed	Design Principle Assessment
Minimum	3.0m	1.5m	-1.5m
Average	6.0m	5.55m	-0.45m

20. As the proposal does meet the deemed to comply requirements, an assessment under the Design Principles is required. Design Principle P1 states (emphasis added):

*'The setting back of carports and garages to maintain **clear sight lines** along the street and not to detract from the **streetscape or appearance of dwellings**; or **obstruct views** of dwellings from the street and vice versa.'*

The proposal is not considered to meet the design principles for the following reasons:

- Although photographs of the subject site (see Attachment 1 -2, shows a carport that was later demolished, it does however provide an indication of the impact of the proposed structure. It should be noted however that the proposed structure is closer to the street by 1.5m, and taller by 1.0m.
- The street is characterised by only single-storey residential properties, 22 in number, and well-set-back from front boundaries. The only exception to this is a shade-sail at No. 23 Palm Terrace, and No. 161B Lewis Road with a carport and a series of small sheds below the fence-line (Attachment 2).
- The proposed carport is higher than the house, which increases the impact of bulk upon the streetscape, and is not in keeping with its surrounds.
- The proposal is visually prominent, being located in-front of the dwelling, having a considerable roof area of 52m², and bright in colour (Classic Cream).

It is recognised however that:

- The proposed setback of the carport and impact on the streetscape is somewhat distorted by virtue of the existing garden of the property extending into the road reserve.
- A large hedge on the neighbouring property screens most of the carport posts when viewed from the south (only), but does not screen the considerable roof area.
- The carport is open-sided and the dwelling will be visible, except part of the roof as a minor factor.
- Vehicles exiting the property will have ample opportunity to see pedestrians on the footpath, which is located adjacent to the road pavement (and not the boundary line), i.e. adequate sightlines are provided

21. Based on the above comments, it is considered that the proposed front setback does not meet the Design Principles of the R Codes, and is therefore not supported.
22. A slightly modified proposal could however be supported subject to a condition of approval to require a 3.0m front setback

Side Setback

23.

Issue	Deemed-to-Comply Provision	Proposed	Design Principle Assessment
Side setback	1.5m	nil	-1.5m

24.

Design Principle P3.2 states (emphasis added):

'Buildings built up to boundaries (other than the street boundary) where this:

- makes more **effective use of space** for enhanced privacy for the occupant/s or outdoor living areas;*
- does not compromise the design principle contained in **clause 5.1.3 P3.1**;*
- does not have any adverse impact on the **amenity** of the adjoining property;*
- ensures **direct sun** to major openings to habitable rooms and outdoor living areas for adjoining properties is not restricted; and*
- positively contributes to the prevailing **development context and streetscape**.*

25.

As referenced above, clause 5.1.3 P3.1 states (emphasis added):

'Buildings set back from lot boundaries so as to:

- reduce impacts of **building bulk** on adjoining properties;*
- provide adequate **direct sun and ventilation** to the building and open spaces on the site and adjoining properties; and*
- minimise the extent of **overlooking** and resultant loss of privacy on adjoining properties.'*

The proposal is considered to meet the relevant design principles for the following reasons:

- The site is slightly lower than the adjoining neighbour, the roof is cantilevered back from the boundary, and a large hedge exists beside the carport, all of which reduces the impact.
- The carport is not in the vicinity of any sensitive areas of the neighbouring properties in terms of overshadowing i.e. only the front driveway of the adjoining property is affected.
- There are no privacy issues;
- The proposal is considered to effectively utilise space;

26.

It is considered that the proposed side setback meets the Design Principles for of the R Codes, and is therefore supported.

CONCLUSION

27. The proposal is for a carport with a reduced setback, front, average and side boundary setbacks. The carport is unusually large for the lot size as it is required to accommodate a caravan. Whilst there is no objection to the reduced side boundary setback, it is considered that the front boundary setback will have a detrimental impact on existing streetscape and consequently degrade the qualities of Palm Terrace. On this basis it is recommended that the proposed carport be approved conditional on the front boundary setback being increased to 3.0m.
28. Should the Committee/Council consider that the relevant design principles have been satisfied and the proposal can be supported as submitted without an increased front setback, condition b) can be deleted.

Voting Requirements: Simple Majority

RESOLVED OCM 175/2016

That Council:

1. Approve a proposed carport at Lot 226 (13) Palm Terrace, Forrestfield, subject to the following conditions:
- a) The development shall be carried out only in accordance with the terms of the application as approved herein, and any approved plan.
 - b) Vehicle accessways shall be suitably constructed, sealed and drained to the specifications and satisfaction of the Shire of Kalamunda.
 - c) Stormwater drainage from roofed and paved areas being disposed of to the specification and satisfaction of the Shire of Kalamunda.

Moved: **Cr Allan Morton**

Seconded: **Cr Sue Bilich**

Vote: For
Cr Michael Fernie
Cr John Giardina
Cr Geoff Stallard
Cr Allan Morton
Cr Sara Lohmeyer
Cr Simon Di Rosso
Cr Sue Bilich
Cr Andrew Waddell

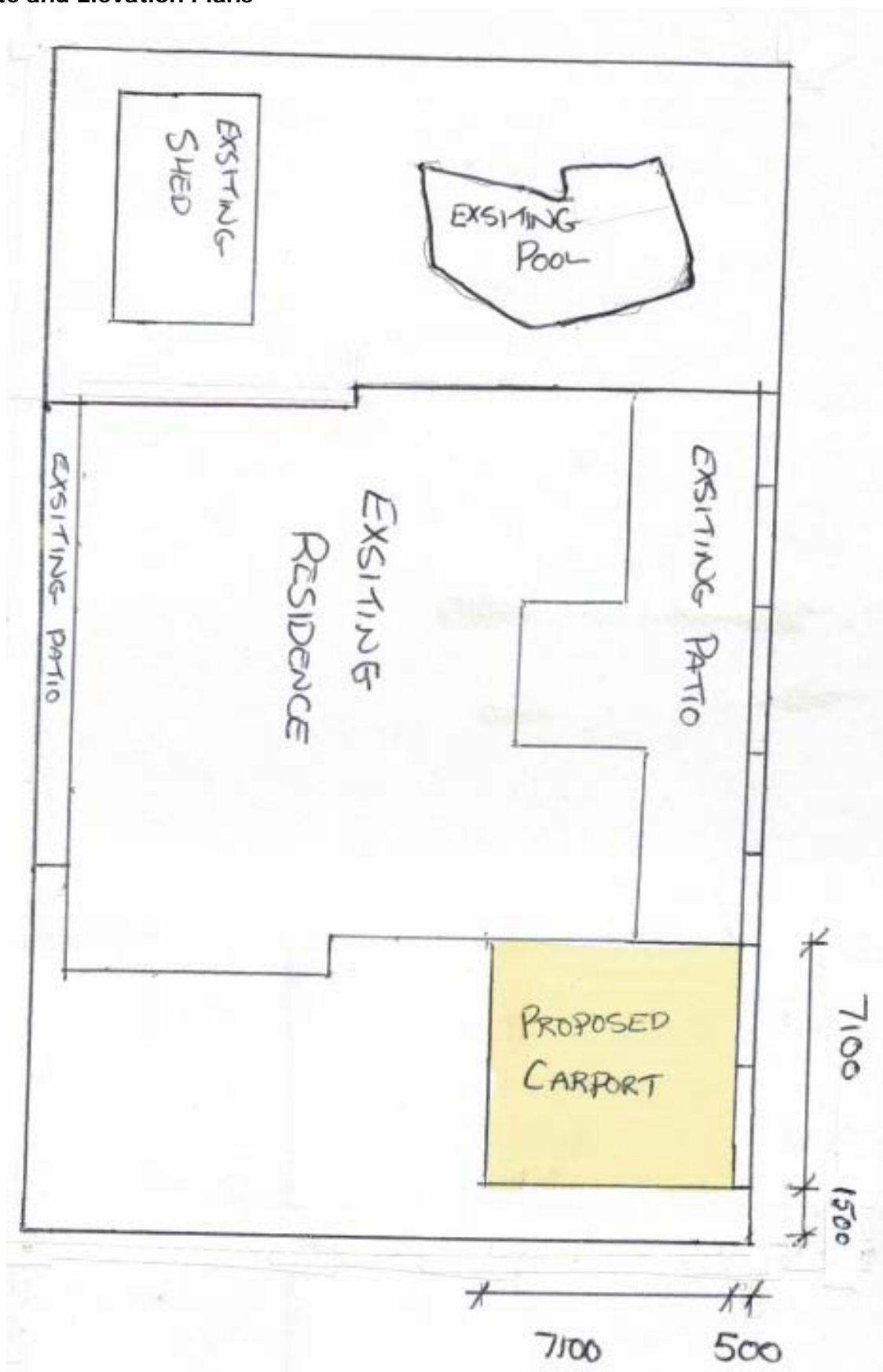
Against
Cr Dylan O'Connor
Cr Tracy Destree
Cr Noreen Townsend

CARRIED (8/3)

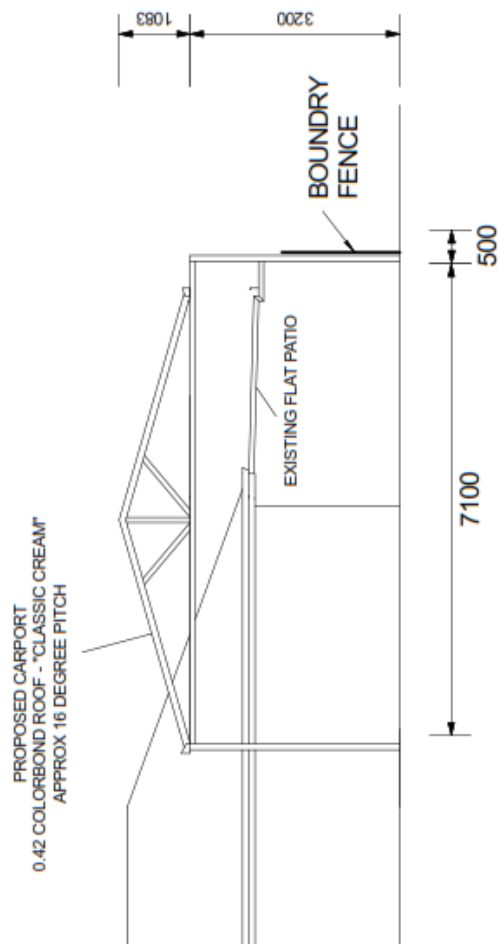
Cr Lohmeyer proposed a change to recommendation to delete original item b). This was accepted by the mover and the seconder before being put to a vote [original items c) & d) now become b) & c].

Attachment 1

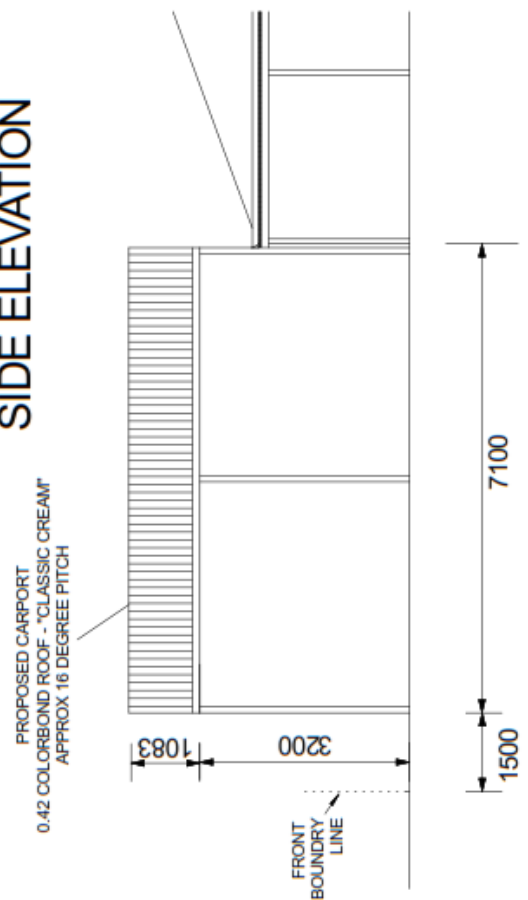
Proposed Carport to Single House - Lot 226 (13) Palm Terrace, Forrestfield
Site and Elevation Plans



FRONT ELEVATION



SIDE ELEVATION



ROSS & MARIA HALL
13 PALM TERRANCE
FORRESTFIELD WA 6058



SCALE 1:100
FFL = -1C

Attachment 2

Proposed Carport to Single House - Lot 226 (13) Palm Terrace, Forrestfield Locality Plan



Attachment 3

Proposed Carport to Single House - Lot 226 (13) Palm Terrace, Forrestfield

Site Photographs



Subject Site – Old Carport & Screening Hedge



Subject Site – Close-Up



Adjoining Property – Northwest (Left) – Large Front Setbacks & Widened Crossover



Adjoining Properties – Northwest (Left) – Large Front Setbacks



Adjoining Property – Southeast (Right) – Screening Hedge



Property Opposite – South



Property Opposite - Southwest



No. 23 Palm Terrace – Structure in the Front Setback



No. 161B Lewis Road – Structures in the Secondary Street Setback Area

Declaration of financial / conflict of interests to be recorded prior to dealing with each item.

**10.3.5 No. 230 (Lot 11896) Pickering Brook Road, Pickering Brook –
Acknowledgement of the Historic Use of the Land**

Previous Items	Nil
Responsible Officer	Director Development Services
Service Area	Approval Services
File Reference	PC-01/230
Applicant	N/A
Owner	M & P Beard
Attachment 1	Site Photos
Attachment 2	Officer Level Advice letter

PURPOSE

1. To note the officer level advice to the landowner regarding the current use of No. 230 Pickering Brook Road (the land), Pickering Brook for motor vehicle repair.

BACKGROUND

2. The land is located on the southern side of Pickering Brook Road bounded by Cunnold Street and Cunnold Close to the east, south and west respectively. The land is currently zoned Residential Bushland R2.5, is 4047m² in area and includes a workshop/outbuilding in the north western corner and a dwelling in the north eastern corner.
3. The land has been utilised for various uses since the 1950's that include a bus depot, service station and garage. The landowner is in the process of putting the land on the market and wishes to seek clarity about the permissibility of the current use of the land as a truck workshop (motor vehicle repair) in order to provide certainty to prospective future purchasers.
4. A search of the Shire's records did not reveal any correspondence relating to the land. No Building or Planning applications exist for the property and the 1965 aerial does show the existence of a workshop and dwelling in the same location as they exist today.
5. On 18 October 2016 the Director Development Services wrote to the owner of the land and advised that at an officer level, despite no evidence of approvals for the use, due to the long standing nature of the use without any evidence of complaints or issues, the Shire has no objection to the continued use of the land. Please refer to Attachment 2.

DETAILS

6. Locality Plan



STATUTORY AND LEGAL CONSIDERATIONS

7. The use of the land as 'motor vehicle repair' is a prohibited use under the Shire of Kalamunda Local Planning Scheme No. 3 (the Scheme). In other words there is no legal discretion to approve the current use of the land having regard to the zoning.
8. Uses that have existed for some time that were lawful prior to the operation of the current town planning scheme are called "non-conforming" uses. Clauses 4.8 to 4.12 of the Scheme relate to the consideration of non-conforming uses. In order for a use to be defined as lawful either a planning approval under a previous town planning scheme must exist or evidence must be produced that proves that approval was not required under a previous town planning scheme. As no records have been found relating to the land, the current use cannot be classified as a non-conforming use.
9. Clause 214 of the *Planning and Development Act 2005* states that where development is undertaken in contravention of the scheme, the local government "may" give a written direction to the owner to stop undertaking the unapproved development.
10. The use of the word "may" in clause 214 provides the local government discretion to not take any compliance action.

POLICY CONSIDERATIONS

11. Clause 3.0 of the Shire's *P-DEV51 – Planning and Development Compliance Policy* states that the Shire may determine not to take compliance action where:
- The extent of the non-compliance is minor to the point of being barely distinguishable from a compliant development;
 - The non-compliance has been in existence since the gazettal of the scheme and has no apparent impact on the amenity of adjoining properties, the streetscape, is structurally sound (where applicable) and poses no threat to community safety;
 - Where the potential rectification or penalty is disproportionate to the outcome the action would seek to achieve; or
 - Where an activity constitutes domestic enjoyment, notwithstanding that the activity may be defined under the Local Planning Scheme.

COMMUNITY ENGAGEMENT REQUIREMENTS

12. Nil.

FINANCIAL CONSIDERATIONS

13. The financial implications of the Shire undertaking legal actions against the landowner to cease the use would be significant.

STRATEGIC COMMUNITY PLAN

Strategic Planning Alignment

14. *Kalamunda Advancing: Strategic Community Plan to 2023*

OBJECTIVE 5.3 To facilitate increased economic activity within the Shire

SUSTAINABILITY

Social Implications

15. Nil.

Economic Implications

16. Taking compliance action against the owner would result in the loss of a long standing commercial business in the area.

Environmental Implications

17. Nil.

RISK MANAGEMENT CONSIDERATIONS

18.	Risk	Likelihood	Consequence	Rating	Action/Strategy
	Allowing for the continuation of the activity may result in the intensification of the use on site.	Possible	Minor	Medium	Intensification of the activity on site would require the owner to lodge an application to the Shire for approval.

OFFICER COMMENT

19. Dot point 3 and 4 of Clause 3.0 of the Shire's *P-DEV51* is relevant to the land as the non-complaint land use of motor vehicle repair:
- has existed well before the gazettal of the scheme in 2007;
 - has no apparent adverse impact on the amenity of adjoining properties;
 - the buildings appear structurally sound;
 - is no threat to community safety and
 - any rectification (i.e. cessation of the use) would be disproportionate to the outcome Council seeks to achieve.
20. It is considered that despite there being no evidence of any approvals for the use, due to the long standing nature of the use without any evidence of complaints or issues, there are no objection to the continued use of the land.
21. Based on the comments above it is recommended that the advice provided to the owner of the land by the Director Development Services on 18 October 2016 it is noted by Council.

Cr Destree left the meeting at 7.30pm and returned at 7.32pm. No vote was taken during this time.

Voting Requirements: Simple Majority

RECOMMENDATION

That Council:

1. Note the officer level advice provided to the land owner of 230 Pickering Brook Road, Pickering Brook on 18 October 2016 that acknowledges that the land has been used for motor vehicle repair for some time and that there are no objections to its continued use.

Moved: **Cr John Giardina**

Seconded: **Cr Michael Fernie**

Vote:

Council discussed this matter before deciding to leave the matter on the table until November.

RESOLVED OCM 176/2016

That Council:

1. Let the item lay on the table until the Ordinary Council Meeting of 28 November 2016.

Moved: **Cr Andrew Waddell**

Seconded: **Cr Tracy Destree**

Vote: **CARRIED UNANIMOUSLY (11/0)**

Attachment 1

230 Pickering Brook Road, Pickering Brook

Site Photos



Attachment 2

230 Pickering Brook Road, Pickering Brook

Officer Level Advice letter

**From the office of the
Director Development Services**

18 October 2016

Our Ref: PC-01/230

M&P Beard

230 Pickering Brook Road

Pickering Brook

Dear Mr Beard

230 Pickering Brook Road, Pickering Brook – Historic Use of Land for Motor Vehicle Repair

I refer to our meeting on 12 October 2016 and our subsequent discussion relating to the above matter.

A search of the Shire's records not does reveal any correspondence relating to the approved use of the land. This is however not uncommon for uses that have operated for a significant period of time.

Based on your advice that the motor vehicle repair has existed on the land since 1950's, and that the Shire has no records to indicate that there has been any complaints or issues associated with the use, the Shire no objections to its continued use.

Should you wish to discuss the matter further please contact me on 9257 9996.

Regards

Yours sincerely

Natalie Martin Goode

Director Development Services

Declaration of financial / conflict of interests to be recorded prior to dealing with each item.

10.3.6 CONFIDENTIAL ITEM - Chief Executive Officer's Performance Review

Reason for Confidentiality. Local Government Act 1995 s5.23(2) (a). "a matter affecting an employee or employees".

Previous Items	N/A
Responsible Officer	Chief Executive Officer
Service Area	People Services
File Reference	
Applicant	N/A
Owner	N/A
Confidential Attachment 1 <u>Reason for Confidentiality.</u> Local Government Act 1995 s5.23 (2) (a). "a matter affecting an employee or employees".	Performance Appraisal Summary Report – Chief Executive Officer
Confidential Attachment 2 <u>Reason for Confidentiality.</u> Local Government Act 1995 s5.23 (2) (a). "a matter affecting an employee or employees".	Chief Executive Officer's Key Performance Indicators

The Chief Executive Officer declared a direct financial interest as the report relates directly to her and her appointment as CEO.

Voting Requirements: Simple Majority

RESOLVED OCM 179/2016

That Council:

1. Defer this matter to the Ordinary Council Meeting of 28 November 2016.

Moved: **Cr Sue Bilich**

Seconded: **Cr Tracy Destree**

Vote: **CARRIED UNANIMOUSLY (10/0)**

11.0 MOTIONS OF WHICH PREVIOUS NOTICE HAS BEEN GIVEN

Cr Bilich declared a proximity interest as she owns a property on Canning Road where the proposed widening would occur. Cr Bilich left the meeting at 7.36pm and returned at 7.43pm.

11.1 Widening of Canning Road –Pomeroy Road to Shire Boundary

Voting Requirements: Simple Majority

RESOLVED OCM 177/2016

That Council:

1. Request the Chief Executive Officer to:
 - a. Includes the project to widen Canning Road from its intersection with Pomeroy Road through to the Shire's boundary with the City of Armadale to incorporate on-road cycling lanes as part of the Shire's advocacy program to the State Government for funding;
 - b. Prepare a concept design and associated cost estimate to widen Canning Road from its intersection with Pomeroy Road through to the Shire's boundary with the City of Armadale to incorporate on-road cycling lanes direction; and
 - c. Develop a funding strategy that outlines an advocacy plan on how external funding (in full or part thereof) may be sourced.

Moved: **Cr Michael Fernie**

Seconded: **Cr Geoff Stallard**

Vote:	<u>For</u>	<u>Against</u>
	Cr Michael Fernie	Cr Simon Di Rosso
	Cr John Giardina	Cr Tracy Destree
	Cr Geoff Stallard	
	Cr Allan Morton	
	Cr Noreen Townsend	
	Cr Sara Lohmeyer	
	Cr Dylan O'Connor	
	Cr Andrew Waddell	
	CARRIED (8/2)	

Rationale:

Conflict between truck traffic and cyclists

The portion of Canning Road between Pickering Brook and City of Armadale (Karragullen) connects a Main Roads WA Heavy Haulage truck route between Welshpool Road and the Brookton Highway. This route is well utilised by general traffic and in conjunction with numerous heavy vehicles with multiple trailers.

The road is of typical country construction, winding an undulating but suitable for its intent.

This road network is also used extensively by the cycling fraternity.

This stretch of road is quite picturesque passing through both State Forrest and established orchards, with this environment being inviting to cycling enthusiasts connecting back into the City. It enables riders an opportunity for some open riding without traffic lights and traffic monitoring devices interrupting their ride. However, the current width of the road does not allow for the safe movement of both cyclists and vehicles, primarily, heavy vehicles.

It is for this reason that the different forms of traffic are conflicting.

In order for vehicular traffic to pass the slower moving cyclist, whether it be a car or a heavy vehicle, the movement in most cases necessitates crossing the white line on a without choice basis. The speed limit is posted at 90km/hr, this being suitable until a vehicle is confronted with a cyclist, or group of cyclists, moving at a much lower speed, and particularly dangerous when confronted on one of the many sweeping corners.

As the various user groups have an entitled right to utilise this road network it is proposed to investigate possible solutions with a proactive approach rather than be reactive after a situation occurs whereby the outcome may be a fatality/fatalities.

It is understood that the cost to upgrade Canning Road is financially unachievable through Shire funding alone and therefore there is a need to consider and advocate for external funding.

Officer Comments

Canning Road forms part of the Main Roads WA Heavy Haulage Route that provides access for heavy vehicles between the Brookton Highway and the Tonkin Highway/Roe Highway via Welshpool Road East. Furthermore, Canning Road is predominately located within the Shire's jurisdiction with the southern portion of approximately 3km located with the City of Armadale.

The issue outlined is known by the Shire, with a desktop review having been undertaken to determine what options are available to either widen Canning Road to accommodate on-road cycling lanes or develop a separate cycling pathway in parallel to Canning Road. In addressing these options it became clear that the separate cycling pathway option was not feasible with issues such as security, construction

within a State Forest, vegetation clearing and general topography of the land proving both a challenge from a design perspective and costly. The option to widen Canning Road to accommodate on-road cycling lanes would appear to be the more feasible solution.

In investigation the widening option it became clear that this in itself would prove a challenge as well. Firstly the designated road reserve through the State Forest and the existing Canning Road alignment do not align with one another. Therefore the first action would require this to be addressed. Furthermore, there would most likely be a need for widening of the road reserve along various lengths of Canning Road to accommodate widening of existing batters sufficient to accommodate proposed cycle lanes either side of Canning Road.

In preparing a desktop level concept of proposed widening a Budget Cost Estimate in the order of \$3.0m to \$3.5m is envisaged, with this accommodating widening of Canning Road from the Pomeroy Road intersection through to the Shire's boundary with the City of Armadale.

Given the issue outlined, staging of any works proposed over a number of years is not considered appropriate, nor would it be financially viable given the inherent cost of mobilisation/demobilisation on a stage-by-stage basis. As a consequence, the matter to be considered by Council is the need to develop a funding strategy given the Shire's inability to finance the full cost of the works. The proposed strategy will need to outline an advocacy plan on how external funding (in full or part thereof) may be sourced.

To be truly effective in addressing the issue outlined, the section of Canning Road within the City of Armadale's jurisdiction should also be addressed as part of the proposed works. As a consequence, there is a need for liaison between the Shire and the City of Armadale and consideration to support a joint project.

In parallel, the option to consider a request to transfer of responsibility for the care and control of Canning Road and Welshpool Road East utilised as part of the Main Roads WA Heavy Haulage Route to Main Roads WA. This matter has previously been considered by Council in May 2013 and also the City of Armadale in October 2013. Main Roads WA subsequently advised in January 2014 that given Canning Road as it currently exists is located in part outside of the designated road reserve, with this to be resolved by both the Shire and the City of Armadale before any further consideration is able to be progressed. From the Shire's perspective this work has now been funded by Council as part of the 2016/2017 Capital Works Budget and is currently being advanced.

It is noted that Main Roads WA also advised that the joint submission by the Shire and the City of Armadale will only be advanced on receipt of confirmation that all road reserve matters have been resolved. The submission would then advance through an initial "desktop" assessment and if it meets criteria outlined in its *"Guidelines for Determining and Assigning Responsibility for Roads in Western Australia PART 2 ADMINISTRATIVE CLASSIFICATION ASSESSMENT CRITERIA"* move forward to a full assessment in order to make a determination whether to designate Canning Road and Welshpool Road East utilised as part of the Main Roads WA Heavy Haulage Route as a *"highway"* in accordance with *"Section 13(2) of the Western Australian Main Roads Act 1930"*.

The process associated with the transfer of responsibility for the care and control of Canning Road and Welshpool Road East utilised as part of the Main Roads WA Heavy Haulage Route to Main Roads WA offers no guarantee of success for both the Shire and the City of Armadale and therefore, the need to develop a funding strategy becomes paramount.

The Shire has commenced development of a Shire of Kalamunda Bike Plan, with this funding on a 50/50 basis between the Shire and State Government. This project is being funded over 2-years, with formal consideration by Council scheduled for May 2018.

This process would most likely include the need for on-road cycle lanes on both Canning Road and Mundaring Road, given these roads are of a regional nature, linking the Shire with the City of Armadale and the Shire of Mundaring respectively.

The Shire acknowledges the issue outlined and supports the need for on-road cycle lanes along Canning Road from the intersection with Pomeroy Road through to the Shire's boundary with the City of Armadale on the basis that there is a need to construct the required works on a one-off basis through the development of a funding strategy to outline an advocacy plan on how external funding (in full or part thereof) may be sourced in order to advance the project. It is also noted that:

- There is a need to liaise with the City of Armadale to include its section of Canning Road;
- In lead up to developing the funding strategy, the current road reserve alignment issue relating to Canning Road needs to be resolved; and
- On resolving the road reserve alignment issue relating to Canning Road, determination by Main Roads WA whether to designate Canning Road and Welshpool Road East utilised as part of the Main Roads WA Heavy Haulage Route as a "*highway*" in accordance with "*Section 13(2) of the Western Australian Main Roads Act 1930*" is to be finalised.

12.0 QUESTIONS BY MEMBERS WITHOUT NOTICE

12.1 NDIS Services (Cr Fernie) questions raised at Public Question Time

- Q. What work has been done to ensure NDIS participants will have continued transport for Wednesday and Friday night activities and how long will this continue?
- A. The transportation service for the Wednesday day and Friday night services will be available, it is currently available, it is the shires position that where we can it would be preferable to use volunteer drivers on the bus in the event that volunteers are not available staff will facilitate the service.
- Q. Has the Shire met with NDIS staff to discuss the processes of funding participants transport costs, and been provided confirmation in writing of this process? In addition communicated with the City of Swan to see what their formats are.
- A. The shire has undertaken regular communication with the NDIS. There has been meetings with representatives of the NDIS recipients, NDIS and the

Shire. A written response has been sought from NDIS in relation to the transport service, this has not been received. This will continue to be followed up. The City of Swan has been contacted and understand they continue to deliver services similar to the services previously deliver by HACC with the support from the City who are subsidising the difference.

12.2 NDIS Services (Cr Destree) questions raised at Public Question Time

- Q1. I understood the Shire would continue to provide the services that was previously provided under HACC while we undertook a review up until 31 December is that correct?
- Q2. Can you clarify that people who are now under the NDIS are now not receiving that services? Is that correct?
- A. In relation to the transport component the services is still available and will still be available. In relation to the HACC program from 1 July anyone under the age of 65 who was previously funded under HACC their money is transitioned out of the HACC contract and transitioned to the bilateral agreement to NDIS so the Shire's community care does not support anyone who has been deemed eligible for NDIS under HACC funding from this time.

12.3 City Status (Cr Noreen Townsend)

- Q. Could council please have an update at the next Corporate and Community Committee Meeting on the change of status from Shire to City of Kalamunda?
- A. The CEO advised in her view it was premature to bring a report on the city status to Council. This is a matter that is being discuss within the review of the strategic plan and something that should coalesce with that piece of work as well as the review of the wards. There are two pieces of work currently being undertaken that will be presented early next year which will potentially strengthen the decision making in relation to city status. Council will also need to consider the governance aspects of city status, such as how the mayor or president is elected, there are a range of matters to be considered in a change of status process.

12.4 NDIS Services (Cr Destree)

- Q. I am concerned that the action that has now been taken to remove those services from people who are on the NDIS is in conflict to council motion. The service has been removed from people who are for the NDIS and this is in conflict with the council resolution?
- A. The service community care is registered to provide under NDIS is centre based activity and does not come with the natural inclusion of transport. The service that is approved by NDIS is not the exact same model that HACC fund the Shire.
- Q. I thought they would continue to have until the consultant's report was presented to council?

- A. The CEO advised the transport services has been reinstated until 31 December. They have the same service as they had as at 30 June 2016. The recommendation is being complied with.

12.5 Transport Service (Cr O'Connor)

- Q. Is the transport service provided by volunteer drivers and drivers being provided by the Shire?
- A. Paid drivers were provided under the HACC program, drivers are still being provided.

12.6 NDIS Participants Communication (Cr Townsend)

- Q. Have participants been advised in writing of the services continuing.
- A. Yes it has.

12.7 NDIS Services (Cr Bilich)

- Q. Can councillors please be provided with clarity at the Forum next Monday so we can have a better understanding of exactly where we are and also if you can include the fact what the city of swan do and how it compares with what we do?
- A. We have asked the CEO of RISE who is the chair of the Disability and Access Advisory Committee to attend the Forum to provide some clarity to council. A request will be placed with the City of Swan to provide details of the services they are providing.

12.8 Wilkins Road Update (Cr Stallard)

- Q. Is it appropriate to outline to Council the state of play for Wilkins Road as we know it?
- A. The CEO advised the Western Australian Planning Commission (WAPC) have been investigating the Shire Bush Fire Plan that has been developed and submitted. The Plan was referred to Department of Fire and Emergency Services (DFES) who has come back to the Shire with some questions and clarification. The Shire is now awaiting responses from the consultant so the Plan can be relodged with the additional information to the WAPC. WAPC have advised the Shire the decision on Wilkins Road will be deferred until late 2017, following the State Election.

12.9 Bushfire Requirements Briefing (Cr Di Rosso)

- Q. Is it possible to have a briefing on the requirements in relation to the new bush fire attack levels and pruning around properties?
- A. A briefing will not be a problem and will be scheduled.

12.10 Pedestrian Path (Cr Di Rosso)

Q. Is it possible to get some feedback on the feasibility of a pedestrian path at the Gooseberry Hill roundabout and heading toward Landor Road?

A. Taken on Notice.

12.11 High Wycombe Cricket Club Upgrade of Nets (Cr O'Connor)

Q. The club is of the opinion there is a safety issue with the construction of the nets. Can this be looked into?

A. This will be investigated as a priority.

12.12 Rate Rebate (Cr Giardina)

Q. How are we going with the \$15 reimbursements?

A. Recipients had a choice of either an adjustment to their rate account or a reimbursement. Most have been processed are awaiting some residents to return advice as to their preferred remittance arrangement was.

12.13 Forrestfield Industrial Area Stage One Update (Cr Waddell)

Q. Can an update on this be provided and in particular if there has been success on the acquisition of the road reserve?

A. All the road reserves have been signed off. The road can now proceed all the way to Berkshire Road.

Forrestfield Industrial Area Stage One Update (Cr O'Connor)

Q. Have all the statutory quarterly financial reports required for stage one been complied?

A. Yes.

13.0 QUESTIONS BY MEMBERS OF WHICH DUE NOTICE HAS BEEN GIVEN

13.1 Cr Stallard - Car park on Central Road

Q. The public carpark associated with the Aldi development. The fact that the carpark is currently being used as a "make shift" carpark does the Shire have any legal responsibility? What would be the cost of constructing the carpark by the Shire?

A. To seal the undeveloped section of the carpark within the reserve land being incorporated as part of the proposed Aldi Supermarket carpark the order of cost estimate is \$140,000 to \$160,000 ex GST. However, this estimate assumes a clear site and makes no allowance for dealing with and/or incorporating existing trees into the design. The cost of this is unknown and would be subject to specialist design. There is also no allowance for any rock

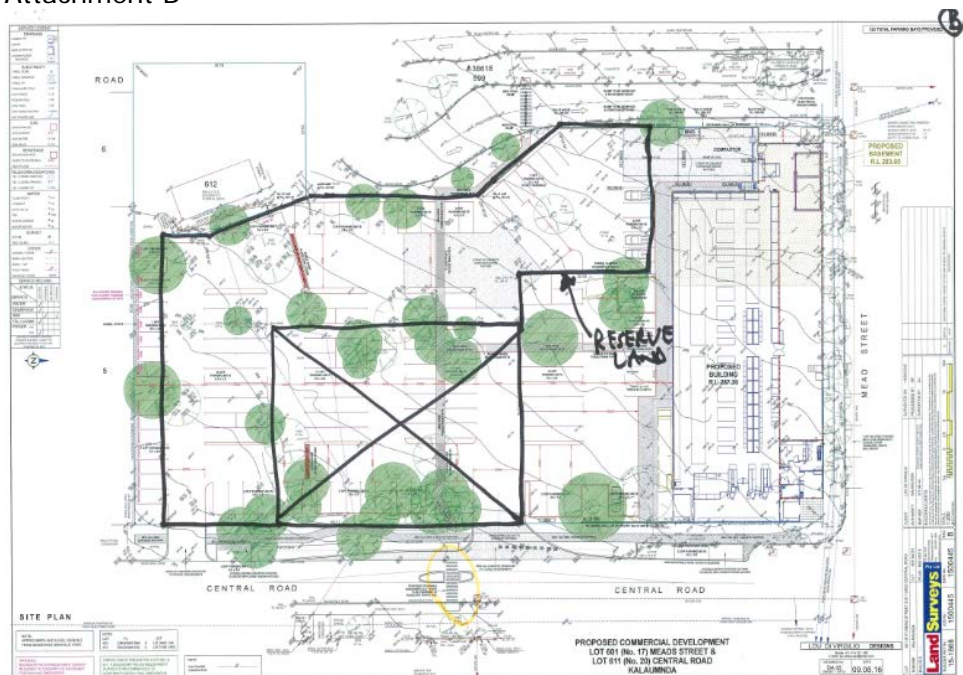
accounted as part of car park pavement and drainage construction since detailed levels for the car park are not known.

- Attachments: A: Area marked "X" reflects the extent of the undeveloped section of the carpark.
B: "X" marked up on the Aldi Supermarket site plan.

Attachment A



Attachment B



13.2 Cr Destree - Pedestrian Crossing Town centre

Q. Can the risk of pedestrian crossings within the Town Centre be reassessed?

A. The existing pedestrian crossing points within the Kalamunda CBD have not been subjected to a risk assessment as these existing crossing points meet Australian Standards.

Where safety concerns are raised the Shire may consider it appropriate to undertake a detailed pedestrian and vehicle count to evaluate if each individual crossing meets the warrants for the installation of a zebra crossing. The Shire, in this instance, would most likely consider appointing a consultant to undertake a road safety audit to identify the risks for this road and pedestrian environment in order to address any concerns or deficiencies with Austroads or Australian Standards.

The Shire requires Main Roads WA approval for all traffic related linemarking installed on its road network, this includes raised humps and zebra crossings. Additionally before the Shire and Main Roads WA can consider a change to a zebra crossing, each location requires a detailed traffic and pedestrian count to ensure minimum pedestrian and vehicle numbers are met.

The existing pedestrian humps that are located throughout the Kalamunda Central Business District are primarily focused on raising driver awareness within this road environment to encourage suitable vehicle speeds within this area.

In any traffic and pedestrian upgrade that is carried out, the Shire needs to consider the approach road environment to all crossings in the CBD to ensure consistency is maintained for drivers that approach these crossing points, to ensure pedestrian safety. If only one crossing point is changed within the CBD, drivers not be aware of the inconsistencies with other locations within the CBD vicinity.

13.3 Cr Noreen Townsend - Pedestrian Crossing

Q. Can the crossing at the top of Haynes Street near the library also be included in any study?

A. As per the answer provided for Question 12.8, this location will be included in the Shire's review when undertaking assessment of the Canning Road crossing point adjacent to the IGA.

13.4 Cr Michael Fernie - Burning Permits

Q. Who sets the permits and why are they not flexible and why do they not take into consideration seasonal conditions?

A. The season can be varied by Chief Bush Fire Control Officer of each local government. It was determined in consultation with relevant Shire staff, that the due dates would not be varied due to witnessed fire behaviours. Although

there has been substantial rain, the soil dryness index which is one of the factors considered in the decision, is the same as it has been in previous years for the same time of year.

13.5 Cr Noreen Townsend - Debtors and Creditors Report for the Period Ended 31 August 2016

Q1. Requested information in relation to EFT50902.

A1. EFT50902 – The Churches Commission on Education (Inc) T/A Youthcare - \$22,550.00 – Chaplaincy Services in Shools located in the foothills and the Hills 2016/2017.

The Shire currently has an MOU with YouthCARE from 1 July 2014 to 30 June 2017. Each year approximately 30 September the Shire makes the following payments to YouthCARE:

Budget Code	Chaplaincy Services for Schools located in:	Annual Contribution
CS08	The Hills	\$15,500 (+GST)
CS09	The Foothills	\$5,000 (+GST)

Q2.

EFT51251 is a payment to an enterprise outside the Shire. Should we not be using local businesses?

A2. EFT51251 – Jim's Mowing St James – Home Care Package - \$150.00

In the home care packages guidelines, consumers are able to purchase services from whatever supplier they like. In this consumer's instance, they had previously used Jim's Mowing St James before and wanted to retain him and shift the payment to their package.

13.6 Trees on Mead Street/ Central Road Site – (Cr Destree) question asked at Public Question Time

Q. The community is seeking understanding as to what trees will be retained on site. Can some advice be provided as to the timing of when this will be communicated?

A. The Director Development Services advised a plan and/or list can be provided with the trees identified within the next week.

Information provided to Councillors and tabled.

The tree audit undertaken for the site and a site plan numbering which trees are to be retained on site for stage 1 (yellow outline) that involves the construction of the Aldi supermarket building. Stage 2 is the car park.

The trees remaining on the site for stage 1 are numbered 27, 30 and 32 (3).

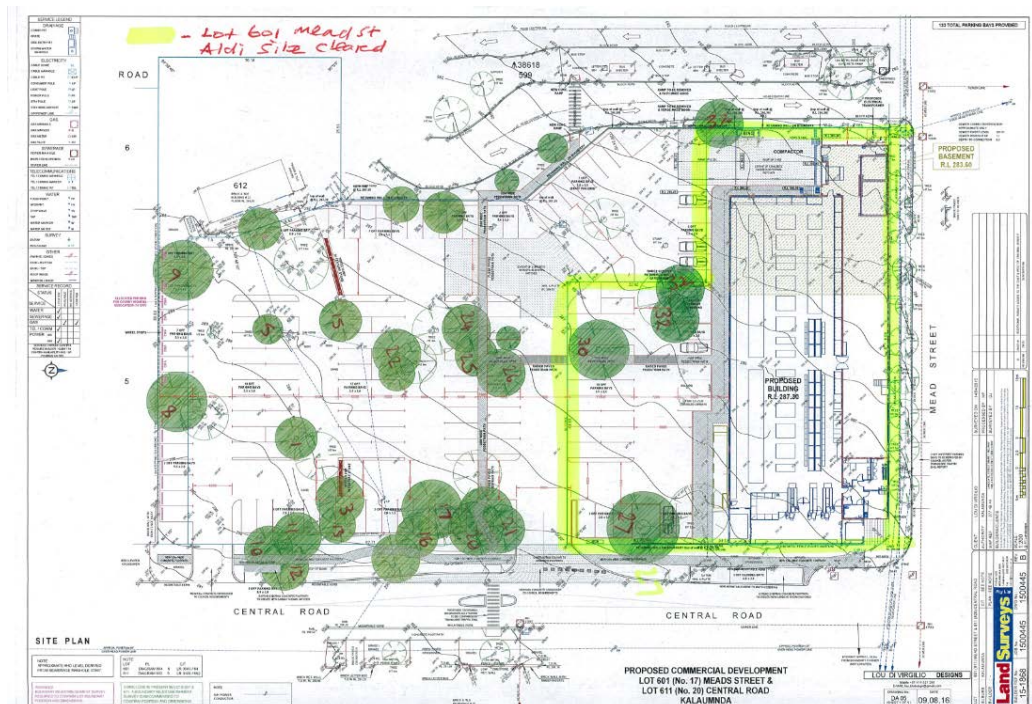
There is a single marri tree which has yet to be removed due to a bees nest and is highlighted on the site plan next to tree 27.

In respect to the issue of tree management and site survey for the car parking area (stage 2) which has not yet commenced, planning staff are awaiting confirmation from the applicant as to when the trees retention plan for stage 2 will be complete. Once this information is received, this will be forwarded to all Councilors.

Note that the relevant conditions of planning approval that relate to tree retention are:

- 16) Measures shall be taken to ensure the identification and protection of any vegetation on the site worthy of retention prior to commencement of site work.
- 17) Development works to be carried out in accordance with AS 4970 2009 "Protection of trees on Development sites".

The applicant is fully aware that construction of the car park cannot occur until a tree retention plan is submitted.



17 Mead Street- tree audit 6/6/16

No.	Species	Comments
1	Jarrah (<i>Eucalypts marginata</i>)	Tall straight, 2 trunked
2	Marri (<i>Corymbia calophylla</i>)	Dead
3	Jarrah	Multi-trunked, half dead, crossing branches
4	Marri	Dead trunk
5	Marri	Twin trunk, canker present
6	Marri	Good from, mistletoe present
7	Spotted Gum (<i>Corymbia maculata</i>)	Young sapling growing at base of Marri tree
8	Marri	Good form, slight lean, silver wattle growing at base
9	Marri	Good form
10	Sugar Gum (<i>Eucalyptus cladocalyx</i>)	Tall, straight growing near base of Marri
11	Marri	Good form
12	Marri	Good form
13	Golden Wattle (<i>Acacia pycnantha</i>)	Three wattles
14	Marri	Minor amount of canker present
15	Marri	Small tree
16	Marri	Tall, adjacent to path
17	Marri	Good form, some foliage decline
18	Marri	Bark stripped from trunk
19	Golden Wattle	
20	Golden Wattle	
21	Marri (4)	Group of 4, various ages. One scarred, foliage decline
22	Marri (2) and Jarrah	Young tree has a scar, one older tree has mistletoe
23	Marri	Canker on high limb
24	Marri	Habitat tree, many hollows of varying sizes, epicormic growth
25	Jarrah	straight
26	Marri	Leaning into carpark
27	Marri	Mature (one of the oldest trees), sugar gum growing at base. Canker present
28	Marri	Leaning, canker, mistletoe, foliage decline. Mature tree
29	Winter wattles (<i>Acacia iteaphylla</i>)	Row against fence
30	Marri	Good form
31	Jarrah	Odd shape, damaged at some stage
32	Marri (3)	Mature, one has canker, other dead wood

14.0 URGENT BUSINESS APPROVED BY THE PRESIDING MEMBER OR BY DECISION

14.1 Nil.

15.0 MEETING CLOSED TO THE PUBLIC

15.1 Meeting Closed to the Public

RESOLVED OCM 178 /2016

That the meeting go behind closed doors to consider Confidential Items.

Moved: **Cr Sara Lohmeyer**

Seconded: **Cr Sue Bilich**

Vote: **CARRIED UNANIMOUSLY (11/0)**

The meeting closed to the public at 8:09pm. All members of the public and staff left the meeting, all councillors remained in Chambers.

Cr Geoff Stallard left the meeting at 8:10pm and did not return.

10.3.6 CONFIDENTIAL ITEM - Chief Executive Officer's Performance Review

Voting Requirements: Simple Majority

RESOLVED OCM 179/2016

That Council:

1. Defer this matter to the Ordinary Council Meeting of 28 November 2016.

Moved: **Cr Sue Bilich**

Seconded: **Cr Tracy Destree**

Vote: **CARRIED UNANIMOUSLY (10/0)**

Meeting Reopened to the Public

RESOLVED OCM 180/2016

That the meeting reopen to the public after considering Confidential Items.

Moved: **Cr Tracy Destree**

Seconded: **Cr Allan Morton**

Vote: **CARRIED UNANIMOUSLY (10/0)**

16.0 CLOSURE

- 16.1 There being no further business, the Presiding Member declared the meeting closed at 8:42pm.

I confirm these Minutes to be a true and accurate record of the proceedings of this Council.

Signed: _____
Presiding Member

Dated this _____ day of _____ 2016