

SOME FREQUENTLY-ASKED QUESTIONS

Will my roof fall in?

To date EHB has not been reported or detected in any roofing structure. It is highly unlikely any house would be at immediate risk. The borer can take between two to 12 years to eat through timber, depending on the thickness of the timber and number of pests.

I am about to build, what should I put in my roof?

EHB only attacks untreated, seasoned pine. Treated pine and other roofing materials are not at risk from EHB. The Department of Housing and Works advice is not to use untreated pine for structural purposes. Seek advice from your builder about the most suitable option.

How to tell if there's treated pine in your roof

Ask your builder. Local councils also keep copies of housing plans. If you have a pine roof, first have your roof inspected regularly. If borer holes are found, call us on 1800 084 881 (free call) and we will send someone, at no cost, to identify whether it is EHB.

How do I know if I'm in an affected area?

Affected businesses and homeowners will be notified by letter, or can check the EHB website.

Why should I report EHB?

Pine timber construction including houses could be attacked and become structurally unsound and unsafe. If EHB becomes established it could cause immense problems for businesses, home-owners and WA's pine industry.

Where can I dispose of waste pine?

The EHB program has worked closely with local waste management facilities and they are trained to deal with the disposal of waste pine. Check with your local council.

Why wasn't it stopped by quarantine?

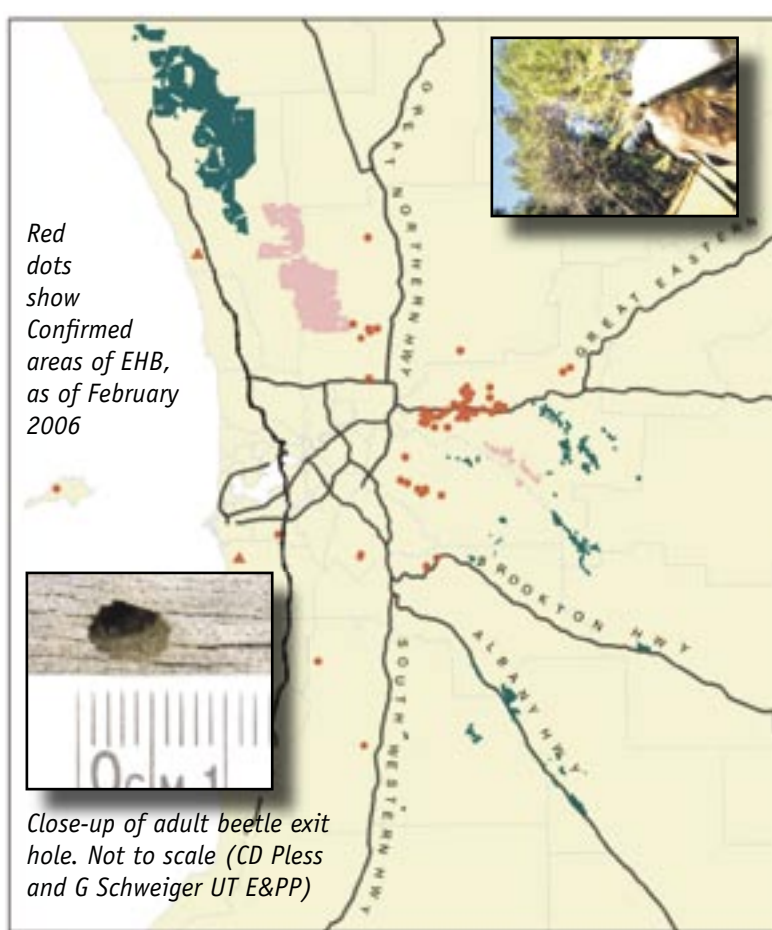
The borer is extremely hard to detect as it burrows into the wood. It is usually only when it emerges and leaves tell-tale borer holes that its presence becomes known.

Larvae boring through timber. Not to scale. (Clemson University, US)



Prepared by: The European House Borer Program. February 2006. (65)

Disclaimer: The material in this publication was prepared from the most up-to-date information available at the time of publication. It is intended as a guide only and the publisher accepts no responsibility for errors.



Red dots show Confirmed areas of EHB, as of February 2006

Close-up of adult beetle exit hole. Not to scale (CD Pless and G Schweiger UT E&PP)

Spread

EHB has a relatively long larval period of one to 12 years, mostly spent within the timber. Adult EHB are considered to be strong fliers and can cover a considerable distance to infest new areas. The pest can live in a wide variety of climatic conditions, but it prefers temperate, coastal habitats.

Management

The public should not collect or move untreated pine. EHB is a quarantine pest and the only effective treatment once infected is fumigation with approved fumigants applied by licensed pest control operators. Timber can be effectively treated prior to use.

Supported by:

WESTERN AUSTRALIA Department of Agriculture Western Australia
Forest Products Commission

QUEENSLAND Department of Primary Industries & Fisheries

NEW SOUTH WALES State Forests of New South Wales

VICTORIA Department of Sustainability & Environment

TASMANIA Forestry Tasmania

SOUTH AUSTRALIA ForestrySA

NORTHERN TERRITORY Department of Business, Industry and Resource Development

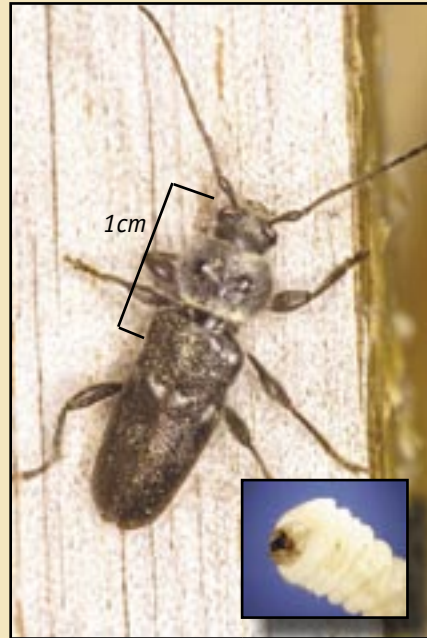
AUSTRALIAN CAPITAL TERRITORY Environment ACT

COMMONWEALTH Australian Government Department of Agriculture, Fisheries and Forestry

**Report any suspected EHB activity to the
Department of Agriculture - Freecall Hotline**

1800 084 881

For more information visit www.ehb.wa.gov.au



Adult European House Borer. Inset: the larvae. - Pictures not to scale

What is it?

European house borer (EHB), *Hylotrupes bajulus* Linnaeus, is a destructive pest of seasoned coniferous timber including pine, fir and spruce. If allowed to become established it can cause major structural damage of buildings.

Timbers commonly used for structural purposes in Australia, including radiata pine, southern pine and Douglas fir, have been shown to be susceptible to damage by EHB.

EHB most often infests roof timbers but is also known to infest architraves, door frames and timber articles such as pine furniture. Evidence of the pest can also be found in living trees with dried out branch stubs and damaged branches and trunks, dead trees and logs.

Origins

EHB is found in Europe, the Middle East (Turkey), North Africa, South Africa, South America, the United States, China and Asia Minor. EHB has been detected several times in eastern Australia but those infestations were eradicated by fumigation. It probably came into WA in a piece timber as a borer (larvae).

What to look for

The most visible evidence to indicate the structural timber of a building or timber article is infested with EHB are the presence of:

- Adult beetles which are brownish-black to black and have a slightly flattened appearance. The beetle's wings are usually all black and may have distinctive white patches. The top surface of the first body segment behind the head has two raised, black, shiny knobs, like eyes. Adults are about 8-25mm in length with antennae about half as long as the body.
- Characteristic oval-shaped holes running with the grain on the surface of infested timber from which the adult beetle has emerged. Oval-shaped holes are about 5mm by 10mm in size.

- Frass, a mixture of fine powdery particles of wood dust and pellets of excrement, can sometimes be found on the floor below infested timber where adult beetles have emerged from holes.

- Galleries within the timber are formed by the boring larvae and are frequently tightly packed with frass. Galleries within the timber rarely break through the surface of the timber and therefore are seldom detected. However, long blister-like swellings under the surface of the thin layer of uneaten wood caused by the tightly-packed frass may be evident.

Other evidence to indicate EHB timber infestation include:

- A soft scraping sound made by the larvae as they feed which can often be heard at night and may be audible from some distance.
- EHB larvae within timber. Larvae are elongated and cylindrical with an enlarged and flattened head. The length varies between 19-41mm and about 7.5mm wide at maturity. Larvae can be identified by a row of three small black single-lens eyes on each side of the head.
- Batches of up to 120 eggs which are laid in crevices or cracks in timber.

For further information, contact the Freecall Hotline on 1800 084 881 or log onto www.ehb.wa.gov.au