

A scenic landscape at sunset. In the foreground, there are large, smooth boulders and lush green vegetation, including a prominent palm-like plant. The background shows a vast, flat landscape under a sky with vibrant orange and yellow hues from the setting sun, transitioning to a clear blue sky. The overall scene is peaceful and natural.

**Kalamunda Clean and Green
Local Environment Strategy
2019 - 2029**

Kalamunda Clean and Green Local Environment Strategy 2019 - 2029

This strategy provides the framework to manage environmental pressures and improve sustainable practices over the next decade and beyond. It will assist in protecting the cherished landscape character of Kalamunda and guide improvements in the City's own operations and its work with stakeholders and community groups.

CONTENTS

Mayor's Message	3
A Sense of Place	4
Kalamunda Today	6
Good News for the City	9
What you value about living in Kalamunda	13
What you told the City	14
Key Themes	15
What are our aims?	17
Green Spaces	18
Natural Resources	20
Managing Impacts	22
Reducing Waste	24
Want to know more?	26



Phylidonyris novaehollandiae
"New Holland Honeyeater"



MAYOR'S MESSAGE

I am delighted to present Kalamunda Clean and Green: Local Environment Strategy, the City of Kalamunda's first community-informed plan to protect and manage our local environment.



A Message from Mayor John Giardina

On behalf of the Council, I invite you now to join us in the work of turning it into reality.

Our Council has a long-term vision for the future, formed from the views of the community, focused

on looking after our place, our homes, our biodiversity and natural environment.

Through workshops, surveys and many conversations held to discuss the Local Environment Strategy, you asked that the City demonstrates strong leadership in environmental management and decision-making.

The strategy is not a stand-alone document but will rely on other City strategies and policies to deliver stated actions. It provides the community with a "one stop shop" which helps track the City's progress toward delivering those actions.

We appreciate your interest in Kalamunda Clean and Green: Local Environment Strategy and thank you in advance for your input in achieving our shared vision. Sharing the journey and its successes will be essential.

John Giardina
MAYOR



Thysanotus multifloris
"Fringed Lily"

A SENSE OF PLACE

Kaya. The Wadjuk Noongar peoples are the traditional custodians of the land of the coastal plain and the Perth Hills.

The Beeloo Clan were the family group known to be living in the area in and around Kalamunda. At the time of settlement, Munda was the Elder of the Beeloo clan and there is one thought that the name Kala (fire, hearth) Munda may derive from his name.

Local Elders have commented on the traditional use of the Kalamunda area by coastal people coming to the Hills at certain times of the year to hunt, where kangaroos were sought for skins to make cloaks, as well as for food.

The City of Kalamunda is a diverse community that feels a strong sense of place. Generations of local people have woven powerful memories into Kalamunda's unique and rich landscape of

agriculture and rural retreat, verdant parklands and wildflowers, flowing streams and hidden valleys. A legacy of orchards, forestry, and native plants, animals and birds still abound. From bandicoots to black cockatoos, from abundant eucalypts to rare flowering plants, the City of Kalamunda has much to share and protect.

A sense of entering the country starts on the Swan Coastal Plain, along the seasonal waterways which leads on to the village-sized tranquility of our urban hubs, the craggy reaches of the Darling Scarp and into the heart of the Northern Jarrah forest. Collectively these elements conjure up a sense of belonging and abundance.



Diuris porrifolia
"Rosy Cheeked Donkey Orchid"



KALAMUNDA TODAY

Our City is renowned for its unique and diverse natural and cultural environment. Local residents, visitors from more urbanised parts of Perth and even international guests head to Kalamunda to enjoy our quiet, natural beauty, meandering parklands, hilly ranges or elevated city view and the bushland on our doorstep.

Our Council plays a critical role in ensuring that urban development and natural assets complement each other and that as our City grows, we retain our green credentials.

Our Responsibility lies in enacting policies to care for our reserves, water resources, habitat, wildlife and landscapes, reducing waste, providing quality parkland, minimising bushfire risk and protecting vegetation.

Our Strategies for conserving the best in our Kalamunda environment are largely shaped and informed by you, our community. *Kalamunda Clean and Green: Local Environmental Strategy* is our blueprint for the next ten years, shaped and informed by the community.



Isodon fusciventer
"Quenda"

How will a Local Environment Strategy work for you?

The City of Kalamunda has agreed to a vision for an environmentally sustainable future. It is contained in the *Kalamunda Advancing 2027 Strategic Community Plan*. The plan sets out priorities for meeting community expectations and includes provisions for a Local Environment Strategy (LES).

The City implements the LES through works programs under its four-year Corporate Business Plan. Funds are allocated in annual budgets, and you can track progress in delivering the LES through the City's annual reports.

So where do you fit?

Community members are always welcome to play a part, working with City staff to care for our local environment. You might already be involved in caring for the bushland or a creek through a Friends Group, or assisting your children with 'Adopting a Patch' or a school bushcare project.

If you'd like to be more involved, you might also consider a role on the *Kalamunda Environment Advisory Committee (KEAC)*. Appointed every two years, KEAC's six community members and two Councillors meet regularly to discuss important local environmental concerns. KEAC offers advice to Council on how to resolve them.



Get the whole family involved by 'Adopting a Patch'.



GOOD NEWS FOR THE CITY

Did you know Perth is the only capital city in the world surrounded by Banksia woodland?

The City of Kalamunda contains some of the best remaining woodland in the metropolitan area, so conservation starts with careful planning to maintain these assets in our landscape. Who will thank us? The endangered Black Cockatoos that feed in Banksia woodland, of course!

We have more than 260 natural areas

across the City and 40 'Friends of' Groups who volunteer to restore the bushland and control weeds.



Volunteers come in all shapes and sizes and are vital contributors!

In dollar terms, our 183 bush care volunteers are invaluable.

Last year they performed around 2,000 hours of free bushland maintenance, a gift equivalent to \$205,000 worth of work.



The presence of frogs is a strong indicator of a healthy environment.

We have 343 kilometres of natural waterways

in the City of Kalamunda, filled with fish, water-birds and many frogs like *Crinia georgiana*, commonly known as the 'Quacking frog'. Have you heard it?



*Caladenia flava subspecies flava
"Cowslip Orchid"*



Did you know our City is a world-class, award-winning innovator in recycling water?

A novel plan to capture stormwater and recharge the underground aquifer, then use that water for summer watering at Hartfield Park, has won several awards and the City's project manager was a finalist for the AWA Water Professional of the Year (2017).



The City has won several awards for its approach to recycling water.

Our City lies on part of the Swan Coastal Plain which is renowned for its world class diversity of native plants. In spring our own Hartfield Park Reserve, Maida Vale Reserve and other bush reserves are filled with wildflowers, some rare and endangered.

On our doorstep is the Kalamunda National Park and the Northern Terminus of the Bibbulmun Track.

Fast gaining global fame, this 963 km recreational walking trail is a national treasure.

From a quick shop for last minute hikers' essentials in Kalamunda, you can be on the Bibbulmun in minutes!



Olman Walley performs a 'Welcome to Country' at the Bibbulmun Track.



*Anigozanthos manglesii
"Kangaroo Paw"*

Wee-lah! Wee-lah!

The call of Carnaby Cockatoos rings out as they fly over our City looking for night roosts or Marri trees on which to feast. The City lies

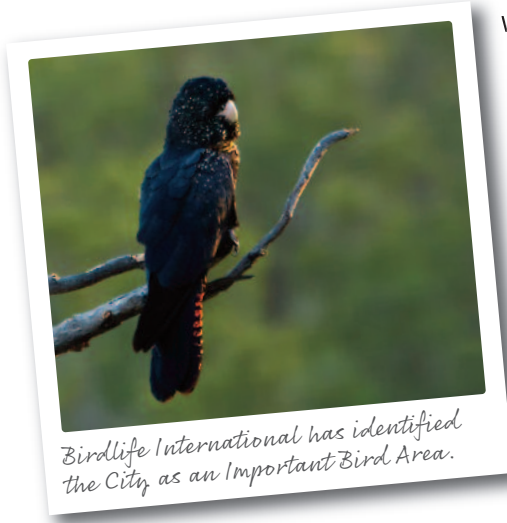
within the Mundaring-Kalamunda Important Bird Area, so identified by BirdLife International because the area is a roost site and foraging base for a variety of Black Cockatoos.

The City proudly recycles approximately 5,000 tonnes of waste from 22,000 households per year and has identified 21 streams of waste to recycle.

In less than two decades, more than 50 amendments to the City's planning scheme have led to better care of our natural assets.

The City is constantly updating its planning approach to improve biodiversity and promote land use that is sensitive to existing natural ecosystems.

Exciting new ideas are emerging, like an urban forest policy to manage tree canopy.



BirdLife International has identified the City as an Important Bird Area.



*Gastrolobium capitatum
"Bacon-and-Eggs"*



Brushtail possums have adapted to human impacts on their natural habitat.

WHAT YOU VALUE ABOUT LIVING IN KALAMUNDA

The Kalamunda community has given voice to what it values in our built and natural environment.

From the hundreds of comments from surveys and workshops, we learned that any blueprint for a green city should focus on four areas:



The value of green space & natural areas



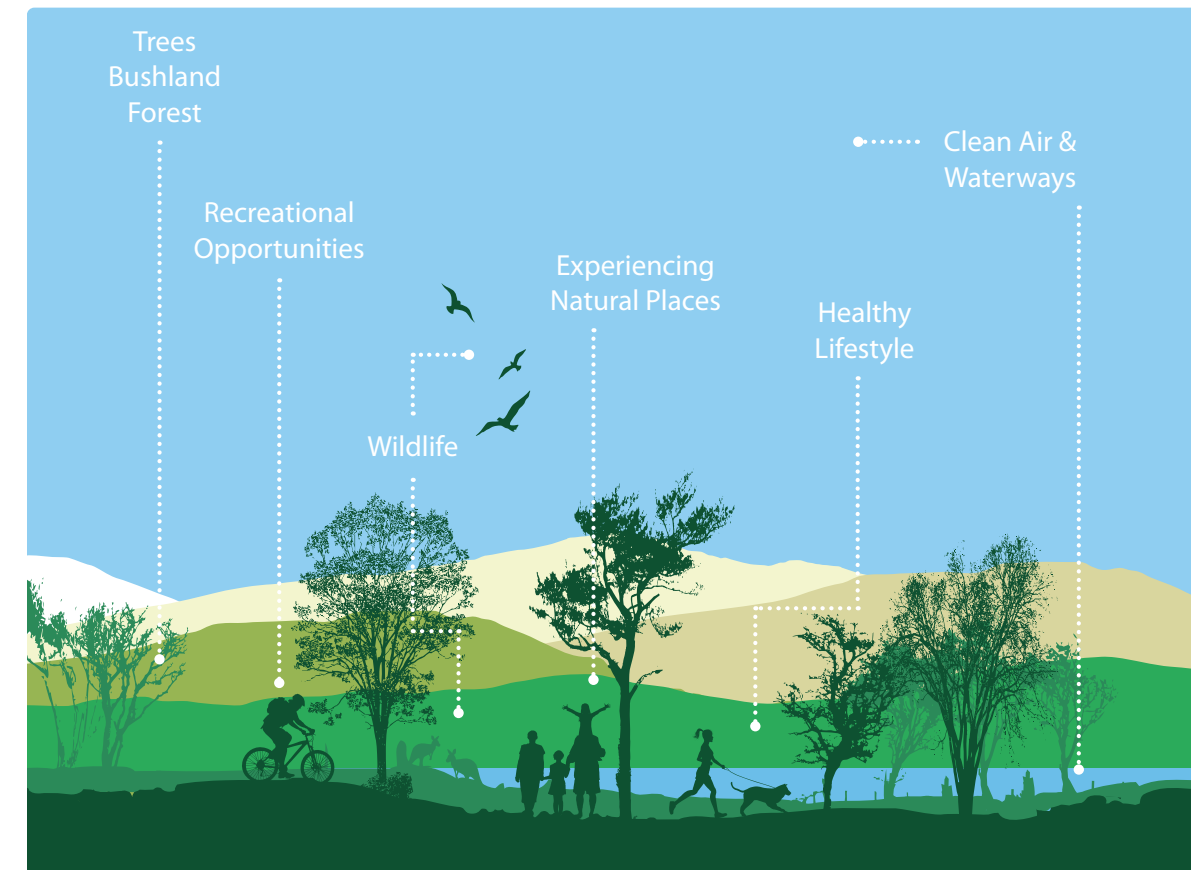
Conserving natural resources



Reducing waste



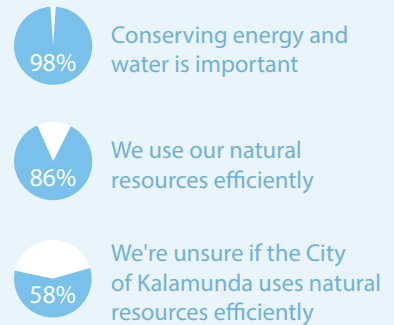
Managing the impacts



WHAT YOU TOLD THE CITY

The City undertook community consultation in 2017 and 2019 to ask
What do you value about living in Kalamunda?

SURVEY RESPONDENTS SAID



We value landscape amenity. Our beautiful escarpment profile, orchard patchwork valleys, dog walking trails, spaces for cycling, walking, taking kids to play in nature and in playgrounds.



We value biodiversity conservation. The many species of animals, birds and plants that live here form an important part of Western Australia's world.

KEY THEMES



The value of green space and natural areas

Caring for our parks, streetscapes & public places, culturally significant features & places, natural features, vegetation & wetland areas is vital to maintaining a healthy community.



Conserving natural resources

By conserving our nature resources we contribute to a thriving community & provide a future for our children.



Reducing waste

Reducing waste is critical to maintaining a healthy community through clean air, water, habitat & biodiversity.



Managing the impacts

Our local natural environment requires constant vigilance to keep it healthy and free from unwelcome impacts. We undertake to work with the community to ensure its protection, including the landscape assets of our City.

The overwhelming message in the workshops, surveys and conversations held with the City is that the local environment is most important to you.

You urged the City to lead the way in reducing our footprint on the natural environment. You suggested ways of protecting our most prized values – ample parklands and reserves, fresh air and roads lined with shady trees.

Yet inevitably more and more people will want to make Kalamunda their home, attracted by the same qualities that we have all identified as precious.

Some respondents to the City's survey expressed alarm or surprise at sudden changes in the landscape and concern about what the future holds.

Even some of the youngest respondents expressed regret about the loss of some aspects of Kalamunda that their parents and grandparents experienced.

The challenge was made to the City to show environmental leadership. As Kalamunda grows into a modern City, a consensus view was that we need to be on the front foot in meeting community needs for a quality urban environment.

It will be a shared journey to minimise waste, recycle and reuse our City's resources wisely. It will be a shared journey to protect the values of our nature, our green spaces and our streetscapes.

What you told the City has been formulated into measurable goals and actions. These are outlined in the pages that follow.



A wide variety of bird species thrive in the City of Kalamunda.



Perth is the only capital city in the world surrounded by banksia woodland.

WHAT ARE OUR AIMS?

Residents have expressed a desire for the City to stick to its commitments, show how they will be achieved and educate the wider community about these goals.

The City has responded to the four themes identified by Kalamunda residents as key areas for action. In the closing pages of the Local Environment Strategy, you will see outlined the precise aims and required actions that respond to each theme.





GREEN SPACES

Our aim	Strategy	Action
The community's needs for green spaces and natural areas are met.	Improve the quality of parks, reserves and streetscapes.	Prepare and adopt a Local Planning Policy guiding future Public Open Space development.
		Assess all parks and reserves for recreation, sport and environmental values. Prioritise reserves for improvement.
Control invasive species in City reserves and managed landscapes.		Review and update the Shire of Kalamunda Weed Control Strategy 2002.
		Develop a strategic approach to the control of feral animals in the City of Kalamunda.
		Map all City local natural areas for Phytophthora species.
Secure a network of linked reserves and places.		Develop a plan to link green spaces throughout the landscape.
		Develop a plan to protect and plant more street trees.



GREEN SPACES

Our aim	Strategy	Action
	Manage bushfire risk without adversely affecting biodiversity in our reserves.	Determine ecological fire requirements and develop fire and biodiversity procedures for the management of City reserves.
	Promote the benefits of our reserves and green spaces for mental and physical wellbeing.	Identify and communicate health benefits provided by natural areas and green spaces.
Protect trees and canopy that provide shade and sense of place in the City of Kalamunda.		Engage the community in activities to benefit personal and environmental health.
		Develop and implement the City of Kalamunda Urban Forest Strategy.



NATURAL RESOURCES

Our aim	Strategy	Action
Protect waterways and manage flood risk in an environmentally sensitive manner.	Holistically manage our surface water resources to improve water quality and natural values.	Develop catchment management plans to inform surface water management throughout the city.
		Develop a Local Planning Policy including guidelines to protect the environmental value of our waterways.
Ensure long term viability of water sources for irrigation of parks.	Identify and utilise fit for purpose water resources. Utilise technology to attain water use efficiencies.	Develop a water resources strategy for public parkland.
		Investigate mechanisms to promote the use of water saving technologies in new developments.
		Maximise water sensitive urban design applications in maintenance and development programs.
		Undertake a feasibility investigation with State Government agencies into a second Managed Aquifer Recharge site within the City.
		Regain Water Wise council status through the Water Corporation.



NATURAL RESOURCES

Our aim	Strategy	Action
Support and assist sustainable movement options.	Develop an integrated movement plan that improves transit sustainability.	Continue to explore initiatives to reduce movement related impacts on the natural and human environment.
		Identify and plan multi-purpose corridors for wildlife, biodiversity and passive movement.
For the organisation to be seen as leaders in sustainable practices.	To become a carbon neutral City to address the impacts of climate change.	Determine the City of Kalamunda's current greenhouse gas emission footprint inclusive of reduced consumption and asset rationalisation.
		Reduce the City of Kalamunda greenhouse gas emission footprint by reducing consumption of energy and rationalising the assets of the City.
		Investigate the options for renewable power supplies.
		Recover and reuse natural resources (seed, plants, timber) where practicable.



MANAGING IMPACTS

Our aim	Strategy	Action
The LES is accountable to the residents of the City of Kalamunda.	The LES guides and informs future City of Kalamunda strategies and plans.	Review the LES every 10 years to follow community trends and aspirations.
		Develop an implementation plan to provide measures and time frames for delivery of the LES actions.
	Use the LES platform to provide simple, interactive and informative materials for the reporting of LES.	Develop LES reporting portal on the City's website to provide an annual environmental "snapshot".
Provide opportunities for partnerships with our community to manage our clean and green local environment.	Provide a comprehensive support program for environmental volunteers.	Support and grow the Friends Group program throughout the City.
		Support and grow the 'Adopt-A-Patch' program linking school aged residents with Friends Group activities.
	Celebrate our environmental volunteers and stewards.	Support and grow our annual volunteer celebration event.
Partner with our community to improve knowledge of our natural areas.	Educate and engage our Community through the delivery of educational opportunities.	Support and grow our Community Environmental Education program.
		Engage with the local schools community through the Adopt-A-Patch Program.



MANAGING IMPACTS

Our aim	Strategy	Action
		Provide informative and interactive mapping of the local environment on the City of Kalamunda Website.
Protect and enhance our regions unique landscapes and sense of place.	Investigate and develop strategy and policy to protect unique landscape features.	Adopt planning provisions to protect significant landscapes.
		KEAC to provide council with a discussion paper regarding the application of 'environment in all policies' approach to policy development.
	Investigate the further protection of native vegetation.	Prepare an updated Local Biodiversity Strategy that identifies priority natural areas and ways to protect them.
		Develop a local planning policy to protect significant trees and vegetation on private property.
		Investigate the further protection of native vegetation through current and future town planning Schemes.
	Promote the City for its nature based activities, landscapes and physical attractions.	Identify unique opportunities to promote Kalamunda's natural assets.



REDUCING WASTE

Our aim	Strategy	Action
Protect the City's natural environment.	Implement the State Waste Avoidance and Resource Recovery Strategy 2030.	Development of the City of Kalamunda Waste Avoidance & Resource Recovery Plan consistent with the State Waste Avoidance and Resource Recovery Strategy 2030.
		Works and contract controls to minimise waste by utilising recycled products where practicable.
	Support community groups to reduce waste in reserves.	Supply resources to community groups actively removing waste from City reserves.
		Facilitate collaboration and resources from EMRC; particularly for community education and guidance to access litter grants.
		Support the local community to participate in national initiatives, e.g. Clean up Australia Day.
Educate and collaborate with the community to improve management of waste.		



REDUCING WASTE

Our aim	Strategy	Action
	Reduce incidence of illegal rubbish dumping.	Develop mechanisms to record and report the amount of rubbish being illegally dumped in City reserves.
		Work with Department of Water and Environmental Regulation and community to increase surveillance at areas where illegal dumping is most prevalent.
	Increase material recovery to 70% by 2025.	Development of the City of Kalamunda Waste Avoidance & Resource Recovery Plan consistent with the State Waste Avoidance and Resource Recovery Strategy 2030.
Reduce the amount of waste generated in the City of Kalamunda.	10% reduction in waste generation per capita by 2025.	Development of the City of Kalamunda Waste Avoidance & Resource Recovery Plan consistent with the State Waste Avoidance and Resource Recovery Strategy 2030.

Kalamunda Clean and Green Local Environment Strategy 2019 - 2029

Want To Know More?

Keep close your copy of Kalamunda Clean and Green: Local Environment Strategy and tell us how we are doing.

If you want to learn more about the City's broader journey towards a greener, cleaner City, visit www.kalamunda.wa.gov.au

Some key publications which may be of interest include:

- *Kalamunda Advancing 2027: Strategic Community Plan*
- *Local Planning Strategy*
- *Environmental Land Use Planning Strategy*
- *Local Biodiversity Strategy 2008*
- *Waste Strategy 2017*



2 Railway Road, Kalamunda WA 6076
PO Box 42, Kalamunda WA 6926
T: 08 9257 9999. F: 08 9293 2715
E: enquiries@kalamunda.wa.gov.au
www.kalamunda.wa.gov.au